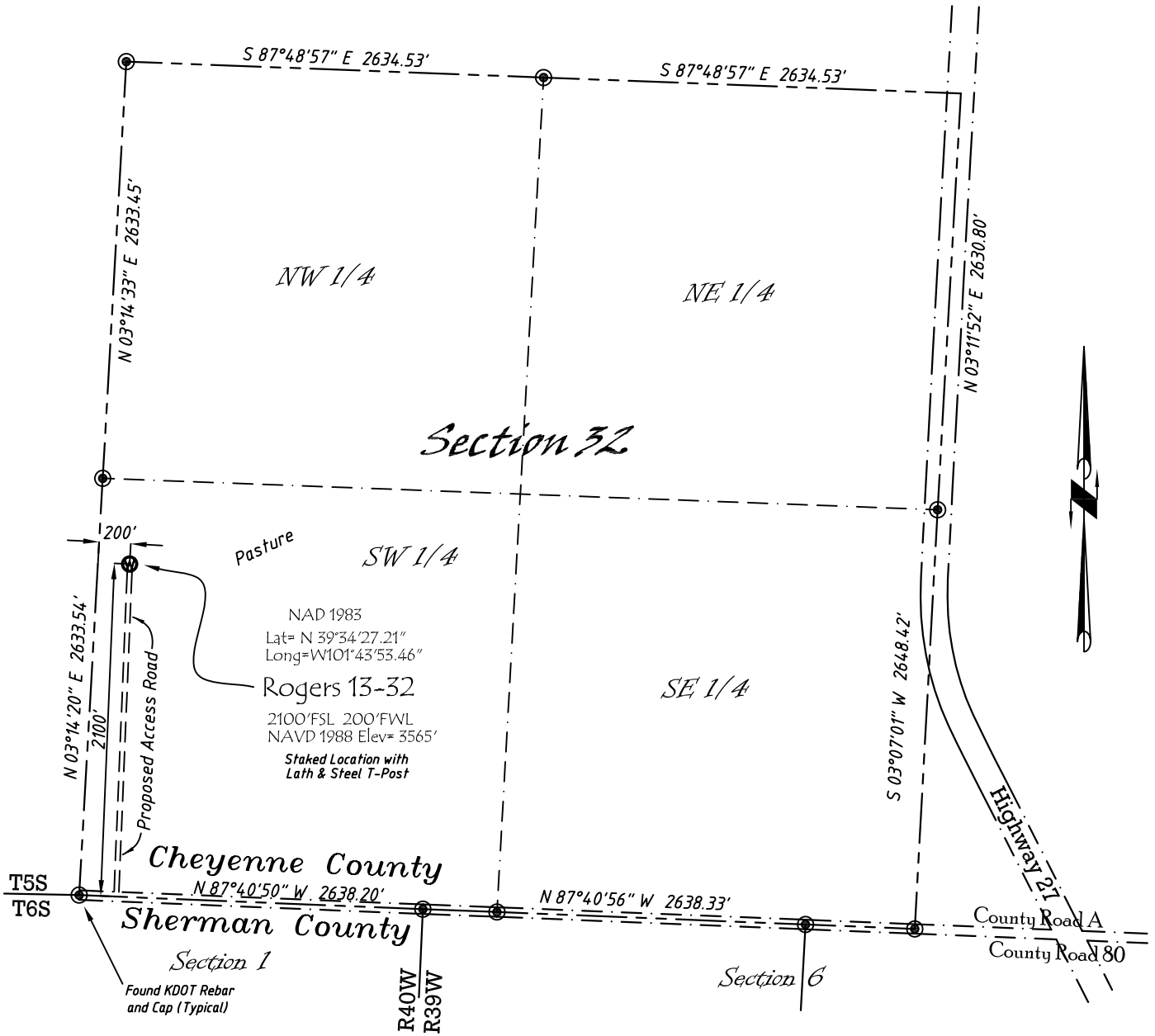


Well Location Map

Rogers 13-32

NW 1/4, SW 1/4, Section 32, T5S, R39W, 6th P.M. Cheyenne County, Kansas
 2100' FSL - 200' FWL Elev=3565'



Copyright © 2011

Directions:

From the Intersection of Hwy 27 & Hwy 36 @ Wheeler, KS, Go S on Hwy 27
 Approximately 13 miles, to County Road A, then go W 1 mile, then N
 2100' to Staked location.

This Drawing is for Construction Purposes Only

Noble Energy, Inc.		
DRAWN GP	DATE 4/7/11	Section 32 T5S, R39W, 6th P.M. Cheyenne County, KS
FB B7+P64	EQ HilPro	
SCALE 1"=1000'	SHEET 1 of 1	PROJECT NO. 1570.188



402 Walnut
 Kanorado, KS
 785/399/2551