



OIL FIELD SURVEYORS

BOX 8604 - PRATT, KS 67124
(620) 672-6491

315113
INVOICE NO.

N-10 EXPLORATION, LLC
OPERATOR

7
CO.

Medicine River Ranch "B"
FARM

Barber 15 34s 11w
COUNT S T R

SW NW SE
CORNER LOCATION

ELEVATION 1338' gr

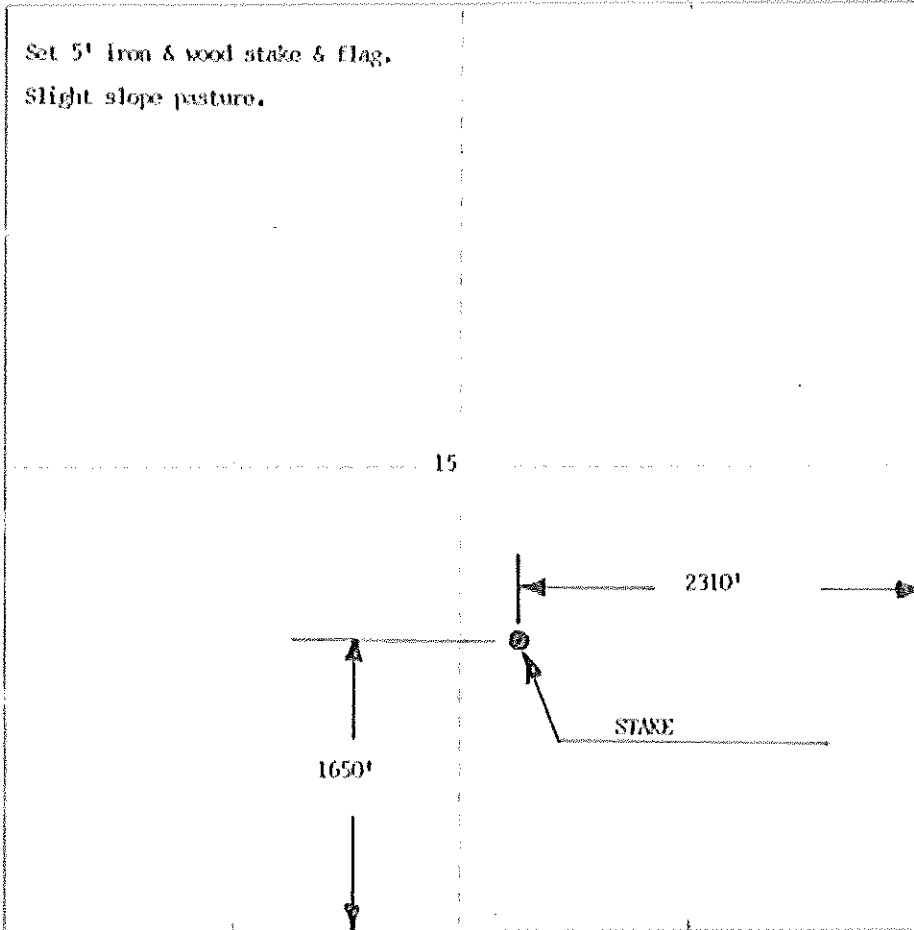


N-10 EXPLORATION, LLC
PO Box 195
Attica KS 67009-0195

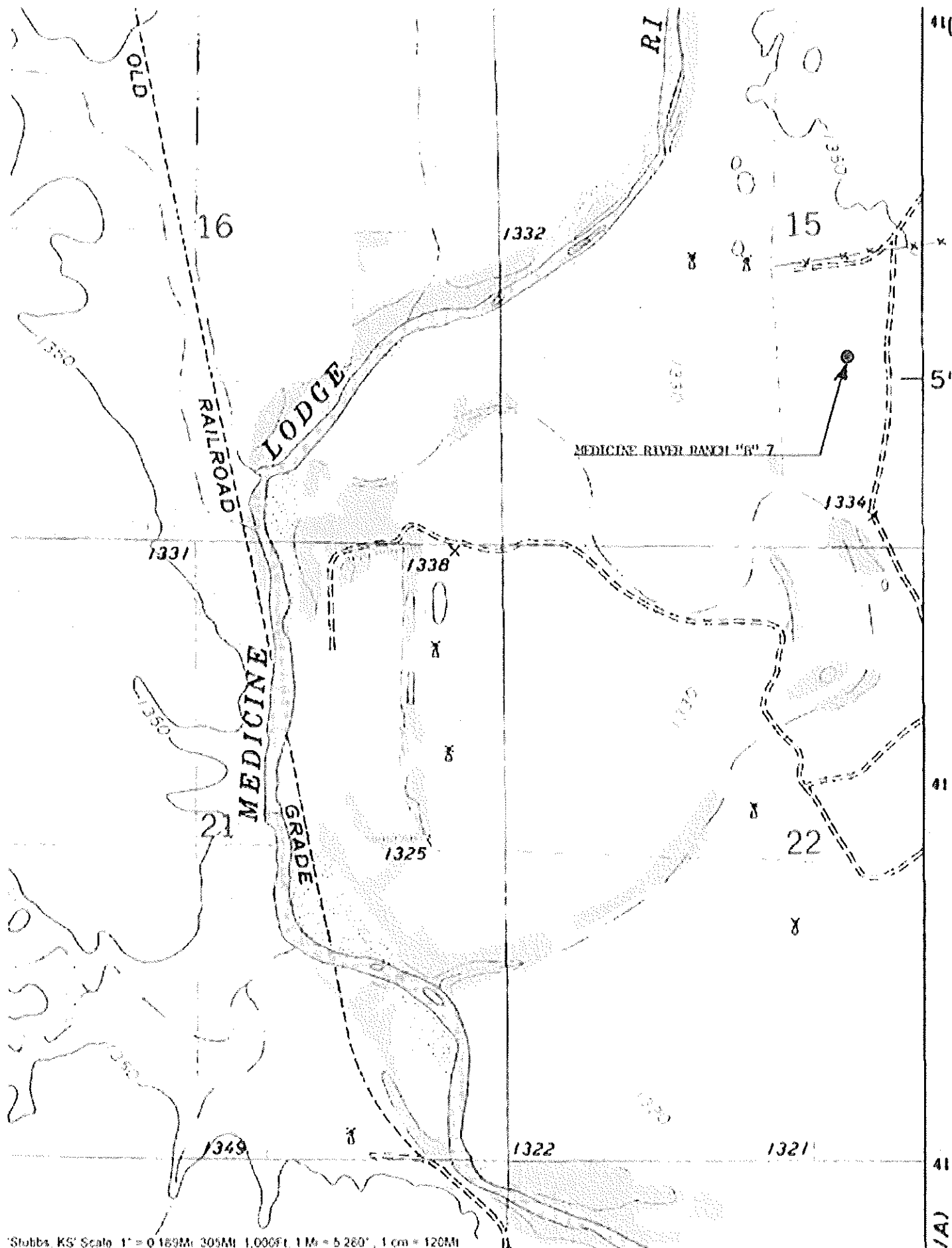
SKETCHED BY

Randy Nestberry

SCALE 1" = 1000'



Staked 03/15/11



'Stubbs, KS' Scale 1" = 0.189Mi 305Mi 1,000ft. 1M = 5 280', 1 cm = 120Mi