



Pro-Stake LLC
 Oil Field & Construction Site Staking
 P.O. Box 2324
 Garden City, Kansas 67846
 Office/Fax: (620) 276-6159
 Cell: (620) 272-1499



a040511-h
 PLAT NO.

9282
 INVOICE NO.

Berexco Inc.

Riney #1-21

OPERATOR

LEASE NAME

Scott County, KS

21 18s 31w
 Sec. Twp. Rng.

340' FNL - 1650' FEL

COUNTY

LOCATION SPOT

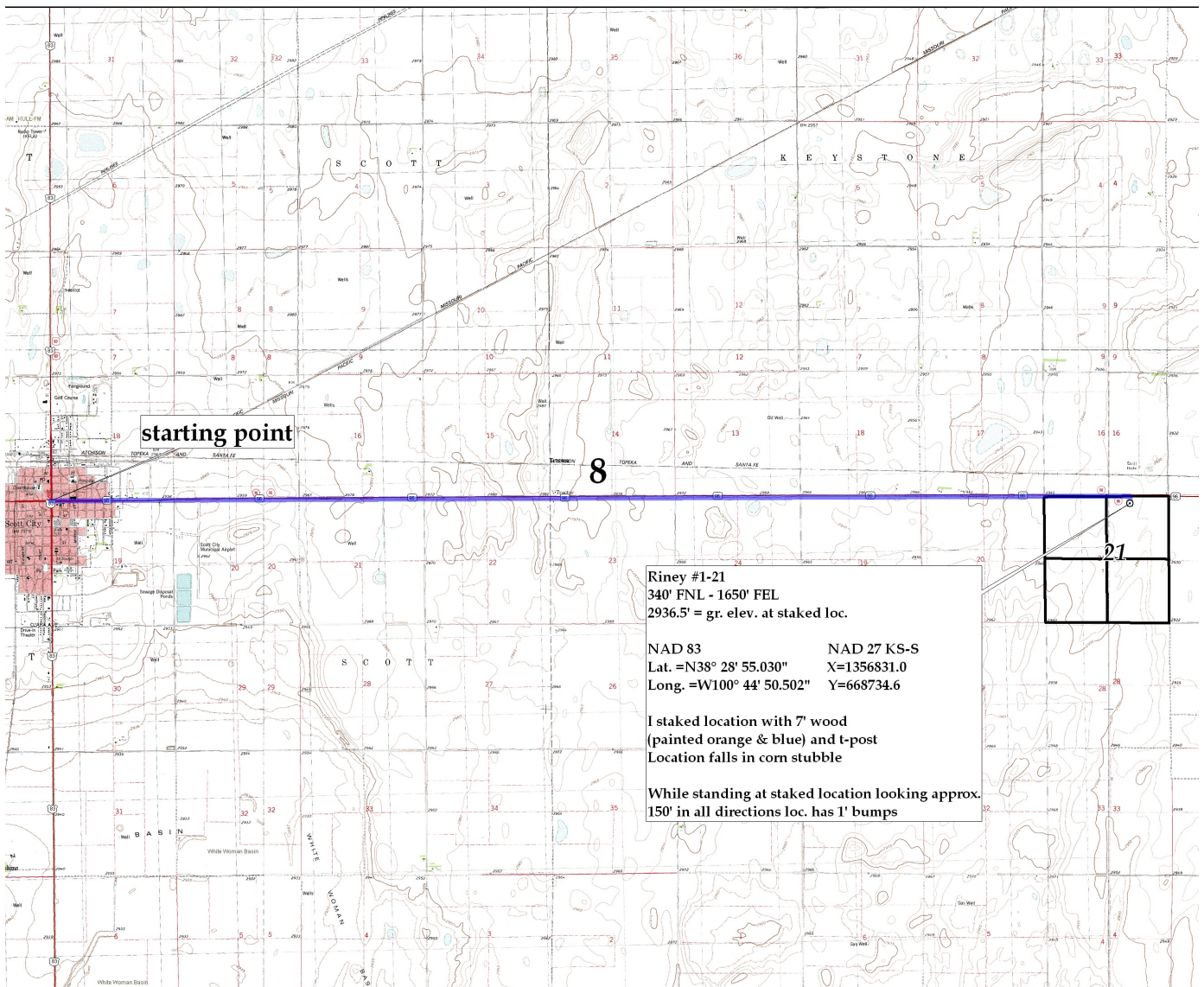
SCALE: 1" = 1000'
 DATE STAKED: April 4th, 2011
 MEASURED BY: Luke R.
 DRAWN BY: Luke R.
 AUTHORIZED BY: Evan M.



GR. ELEVATION: 2936.5'

Directions: From the center of Scott City, KS at the intersection of Hwy 83 & Hwy 96 – Now go 8 miles East on Hwy 96 to the NW corner section 21-18s-21w – Now go 0.6 mile East on Hwy 96 to ingress stake East into at ag entry – Now go approx.560' East through corn stubble to ingress stake South into – Now go 305' South through corn stubble into staked location.
Final ingress must be verified with land owner or Operator.

***This drawing does not constitute a monumented survey or a land survey plat
 This drawing is for construction purposes only***



ERROR: stackunderflow
OFFENDING COMMAND: ~

STACK: