

WELLSITE GEOLOGIST'S REPORT

J. R. Hustead
Consulting Geologist



Scale 1:240 (5"=100') Imperial

Well Name: HETZKE/DIRKS "A" NO. 1-6
Location: SEC 6-T20S-R14W
Licence Number: 15-009-25,518-0000
Spud Date: MARCH 15-2011
Surface Coordinates: 150' N. OF W/2 W/2 SW

Region: BARTON
Drilling Completed: MARCH 26-2011

Bottom Hole Coordinates: Vertical Hole

Ground Elevation (ft): 1915' K.B. Elevation (ft): 1923'
Logged Interval (ft): 1650' To: 3829' Total Depth (ft): 3829'
Formation: LANSING/KC, ARBUCKLE
Type of Drilling Fluid: Starch, Chemical Premix (Displaced)

Printed by MUD.LOG from WellSight Systems 1-800-447-1534 www.WellSight.com

OPERATOR:

Company: F.G. HOLL COMPANY LLC
Address: 9431 E. CENTRAL STE 100
WICHITA, KANSAS 67206-2563

DRILLING CONTRACTOR:

Duke Drilling Company, Rig #2
Drill Pipe 4.5 X H; DRILL COLLARS 6.25 x 2.25, 496' BHA
BIT #2: 7-7/8" JZ QX20 (3-16); WOB: 32-36; RPM 60-65; KELLY BUSHING 8' ABOVE GROUND
LEVEL-MIRT-MARCH 15-2011

CIRCULATION SYSTEM:

MUD-PUMP: EWCO-14W-400, DUPLEX, 6.0 x 14, 60 SPM, 266GPM (85%); SPP: 600 PSI; EARTH PITS; MUD-CO/
SERVICE MUD, INC.; RICK HUGHES

GAS DETECTION SYSTEM:

MBC WELL LOGGING AND LEASING
ANALOG HOTWIRE AND CHROMATOGRAPH

OPEN HOLE LOGS:

DN (PE), DI (SP), ML: Sonic; . LogTech, Hays, KS, K Bange. Log total depth (3829') matched rotary depth.

COMPLETION:

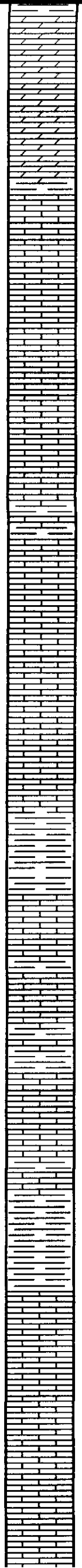
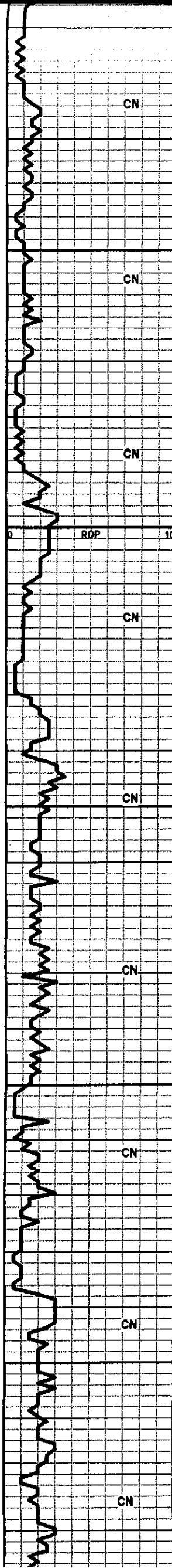
ABANDONED

WELLSITE GEOLOGIST:

Rene Hustead
600 N. WINWOOD ST
GARDNER, KS 66030
(913) 908-3390

ROP ROP (min/ft)	DST	Lithology	Depth	Geological Descriptions	TG, C1-C4 / REMARKS
—					

DST	Lithology	Depth	Geological Descriptions	TG, C1-C4 / REMARKS
		16		
		1700	<p>ANHY-WHT/GRY-OPQ-RNDED-W TR SH LT GRY IMBD-SHALES RED-GREEN</p> <p>ANHY-GRY-OPQ-BLOCKY-HD-DNS</p> <p>DOLO/LMY-CRM-V-F-GRN-SUCRO-HD-DNS</p> <p>ANHY-GRY-OPQ-ANG-W/ SH-GRY-GRN-BLKY-WAXY</p>	<p>SURVEYS</p> <p>863' @ 1 DEG</p> <p>1796' @ 3/4 DEG</p> <p>2393' @ 1 DEG</p> <p>3570' @ 1.5 DEG</p> <p>3829' @ 3/4 DEG</p>
		1760	<p>DOLO-CRM-F-GRN-SUCRO-BRIT TO HD-TR PP POR TO NO VIS POR</p> <p>ANHY-GRY-OPQ-ANG-W/ SH-RED-SLTY</p> <p>ANHY A.A.</p> <p>SH-LT GRY-GUMMY/SH RED</p>	<p>DST #1</p> <p>1736'-1796'</p> <p>REC-10' DRILLING</p> <p>IBLW-WK BLW FOR 12</p> <p>MIN AND DIED</p> <p>FBLW-NO BLW</p> <p>15/30/15/30</p> <p>SIP-263.64-142.89</p> <p>IFP-67.01-60.82</p> <p>FFP-281.86-310.7</p> <p>HP-876.9-819.13</p>
		1800	<p>HERINGTON 1786' (+137')</p> <p>DOLO-CRM-F-GRN-SUCRO-BRIT TO HD-TR PP POR</p> <p>DOLO-CRM-F-GRN-SUCRO-BRIT TO HD-TR PP AND FRAC POR</p> <p>DOLO-GRY-F-GRN-TR FOSS FRAG-SHLY-NO VIS POR</p>	<p>.15 UNIT HW GAS INCRS @1766'</p> <p>MUD DATA @ 1776</p> <p>WT 8.85</p> <p>VIS 69</p> <p>FIL 9.2</p>
		1850	<p>DOLO-GRY W/ BLK SPECS-F-GRN-FOSS-FR INTER-GRN/PP POR-TR FRAC</p> <p>DOLO-CRM/GRY-F-M-GRN-FOSS-FR INTER-GRN POR TO NO VIS POR</p> <p>WINFIELD 1840' (+83')</p> <p>DOLO-CRM/GRY-M-GRN-FOSS-OOL-FR INTER-GRN-TR OOL-MOLDIC AND SM VUG POR</p> <p>DOLO-CRM-F-GRN-SUCRO-FR INTER-GRN AND TR VUG POR</p> <p>DOLO-CRM/GRY-M-GRN-FOSS FRAGS-TR SH IMBD-FR INTER-GRN POR</p>	<p>100 + HW GAS INCRS @ 1796'</p> <p>DST #2</p> <p>1798'-1860'</p> <p>REC-160' MUDDY H2O</p> <p>(60% MUD AND 40% H2O)- 120' MUDDY H2O</p> <p>(40% MUD AND 60% H2O)</p> <p>IBLW-WK BLW BLT TO</p> <p>5.5 IN DEC TO WK. 25 IN</p> <p>BLW</p> <p>FBLW-STRNG BLW</p> <p>BOB-GAS TO SURFACE</p> <p>IN 10 MIN</p> <p>30/60/90/90</p> <p>SIP-527.08-519.69</p> <p>IBLW-68.69-89.10</p> <p>FBLW-177.31-163.74</p> <p>HP-908.29-869.61</p>
		1900	<p>DOLO-CRM-F-M-GRN-FOSS-TR SH IMBD-TR PYR XLS IN TRAY-PR TOFR INTER-GRN POR</p> <p>SH-RED-BLKY W/ DOLO IMBD</p> <p>TOWANDA 1908' (+15')</p>	<p>30 UNIT HW GAS INCRS @ 1860'</p> <p>GAS RATES</p> <p>CK/PSIA/MCF/D</p> <p>1ST .25/ 6.76/ 10.71</p> <p>LST .25/13.60/21.57</p> <p>MAX.25/14.45/22.92</p> <p>MUD DATA @ 1,860'</p> <p>WT. 8.9</p> <p>VIS 42</p> <p>FIL 12.4</p>



DOLO-GRY-F-M-GRN-V-FOSS-OOL-TR OOL-MOLDIC
POR IP TO NO VIS POR

DOLO/LS-GRY-M-GRN-FOSS-SH LT GRY IMBD

FT RILEY 1940' (-17')

LS-CRM-F-XLN-OOL-PR TO FR OOL-MOLDIC POR

1950

LS-OFF WHT-V-F-XLN-HD-DNS W/ TR CHRT-OOF
WHT-FRSH-OPQ

LS-OFF WHT-F-XLN-SLI CHLKY IP-OOL-TR GD
OOL-MOLDIC POR

LS A.A.

2000

LS-GRY-F-XLN-HD-DNS W/ SH LT GRY SPLNTY

WT. 9.4
VIS 60

LS-OFF WHT-F-XLN-BRIT-CHLKY-FOSS-NO VIS POR

LS-OFF WHT-F-XLN-BRIT-CHLKY-OOL-FR OOL-MOLDIC
POR IP

LS-CRM/GRY-F-XLN-HD-DNS W/ SH DK GRY IMBD IP

B/FLORENCE 2041' (-118')

2050

SH-LT GRY-BLKY-FOSS

LS-OFF WHT-M-XLN-FOSS-NO VIS POR

LS-GRY-M-XLN-FOSS-SH IMBD - PYR XLS IN TRAY

SH-GRY-FRM-FOSS-LMY

2100

LS-CRM-F-XLN-FOSS FRAGS-OOL-PR TO FR
OOL-MOLDIC POR

LS-OFF WHT-F-XLN-OOL-PR OOL-MOLDIC POR TO NO
VIS POR

COUNCIL GROVE 2120' (-197)

SH-DK GRY-SFT-SLTY

LS-GRY-F-XLN-HD-DNS TR CHRT-OFF WHT-OPQ-FRSH
IN TRAY

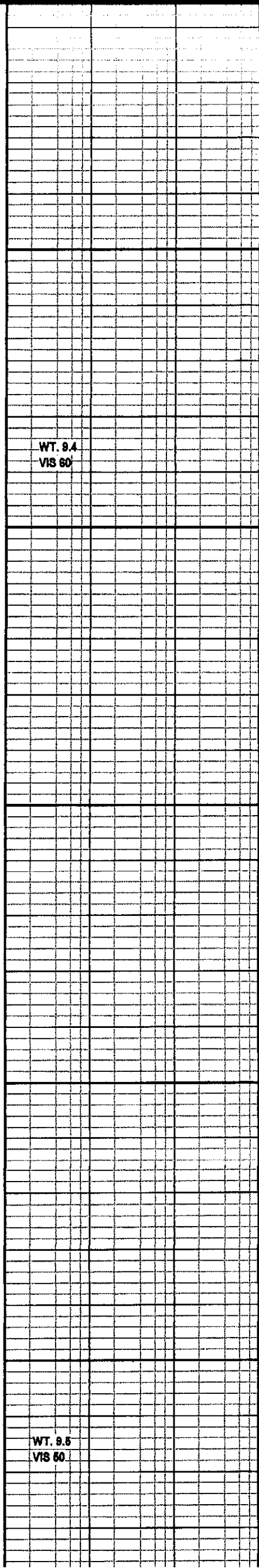
2150

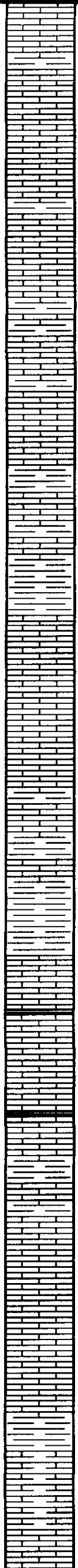
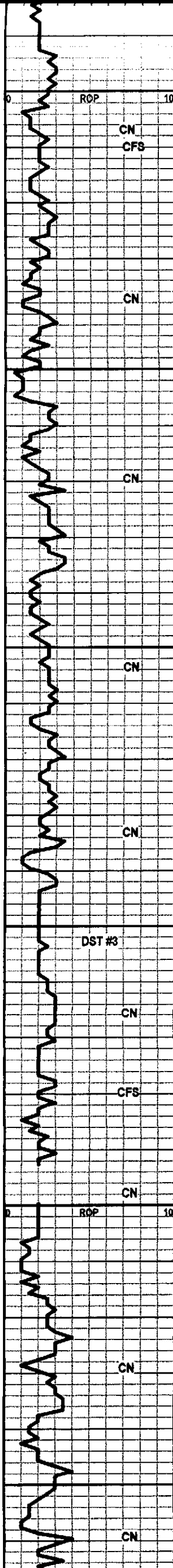
LS A.A.

WT. 9.5
VIS 60

LS-GRY-F-XLN-BRIT-FOSS-SHLY IP-CHLY IP

LS-CRM-F-XLN-HD-DNS





2200
2250
2300
2350
2400
2450

LS-GRY-F-XLN-FOSS-SHLY-TR FOSS VUG POR TO NO VIS POR

CROUSE 2214' (-291')
LOG 2212' (-289')

LS-CRM-F-M-XLN-FOSS-TR INTER-GRN/WINTER-PRT POR-NO VIS GAS BUB

LS-GRY-F-XLN-HD-DNS-SHLY IP

SH-LT GRY-BLKY-LMY

LS-OFF WHT-F-XLN-BRIT-OOL-FR OOL-MOLDIC POR -SH LT GRY-SLTY

LS-CRM-F-XLN-HD-DNS W/ CHRT-OFF WHT-OPQ-FRSH

SH-GRY-FRM-FOSS-LMY

LS-GRY-F-XLN-FOSS-SHLY-NO VIS POR

SH-RED SFT-GUMMY

NEVA 2294' (-371')

LS-CRM-F-XLN-FOSS-HD-DNS

LS-CRM-F-XLN-OOL-FOSS-BRIT TO HD-TR PR OOL-MOLDIC POR TO NO VIS POR-NO VIS GAS BUB

LS-GRY-F-XLN-FOSS-HD-DNS

LS-A.A.

SH-LT GRY-BLKY-FOSS

SH-RED SFT-GUMMY

RED EAGLE 2343' (-420')

LS-CRM-F-M-GRN-BRIT FOSS-OOL-TR INTER-PRT POR

SH-BLK-CARB

LS-CRM-F-M-XLN/GRN-FOSS-TR INTER-PRT POR TO NO VIS POR

SH-BLK-CARB

SH-RED-GREEN-GRY-BLKY

LS-TN-F-XLN-OOL-W/ CHRT-OFF WHT-OPQ-FRSH

LS A.A. CHRTY

LS-OFF WHT-F-XLN-OOL-TR SM OOL-MOLDIC POR

SH-LT GRY-BLKY-LMY

LS-GRY-F-XLN-BRIT-V-SHLY

LS A.A. SHLY

LS-GRY-F-XLN-FOSS-HD-DNS

WT. 9.7
VIS 49

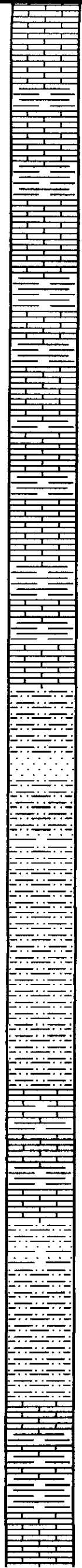
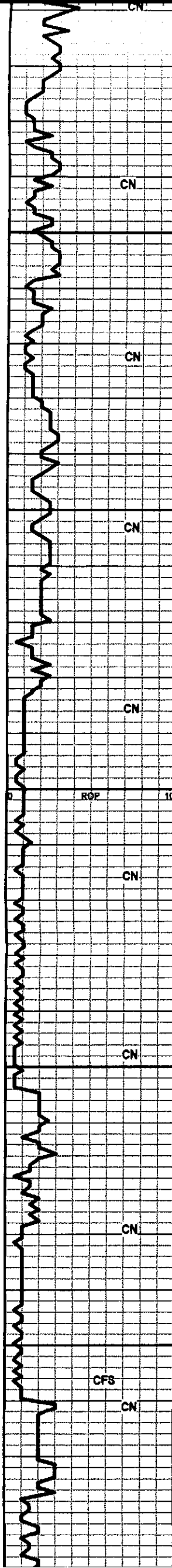
15 UNIT GAS INCRS
@2338'

100+ HW GAS INCRS
@ 2380'

MUD DATA @2,380'
WT. 9.8
VIS 46
FIL 10.4

WT. 9.8
VIS 40

WT. 9.8
VIS 60



LS-GRY-F-XLN-FOSS-HD-DNS

SH-LT GRY-FRM-FOSS

LS-GRY-F-XLN-FOSS-SH LT GRY DISS THRU-OUT-TR
PYR XLS IN TRAY

SH-GRY-FRM-LMY-FOSS

2600 LS-GRY-F-XLN-HD-DNS

SH-DK GRY-BLKY

LS-CRM/GRY-F-XLN-BRIT TO CHLKY-FOSS-NO VIS POR

LS A.A.

LS-GRY-F-XLN-HD-DNS-FOSS FRAGS

SH-LT GRY-FRM-BLKY-FOSS

2660 LB-CRM-F-XLN-FOSS-OOL-TR FOSS VUG POR TO NO
VIS POR

SH-GRY-FRM-BLKY-FOSS

SH-GRY-SFT-SLTY-FOSS

LS-GRY-F-XLN-HD-DNS

SH-GRY-SLTY

2600 SS-FRSTY GRY-TT-RND TO SUB-RNDED-PR
SRTE-D-CALC CMT-PR INTER-GRN POR

SHALE-SFT-SLTY-W/ SLTSS

SH A.A. / 1 PC SS-FRSTY WHT-FRI-RNDED-FR SRTE-D-
CALC CMT-FR INTER-GRN POR

SHALES-SFT-SLTY

SH-GRY-SFT-BLKY-SLTY

2660 **STOTLER 2654' (-731')**

LS-TN-F-XLN-HD-DNS-CHRTY

LS-TN-F-XLN-FOSS-HD-DNS

SH-LT GRY-SFT-SLTY W/ TR SS-FRSTY
GRY-F-GRN-FRI-RNDED-WELL SRTE-D-CALC CMT-FR
INTER-GRN POR

SLTSS-FRSTY GRY-F-GRN-SHLY-HEM-MICA

2700 **TARKIO 2711' (-788')**

LS-OFF WHT-F-XLN-FOSS FRAGS-HD-DNS

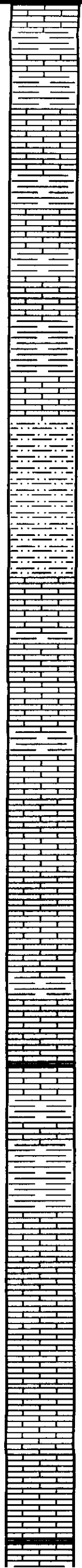
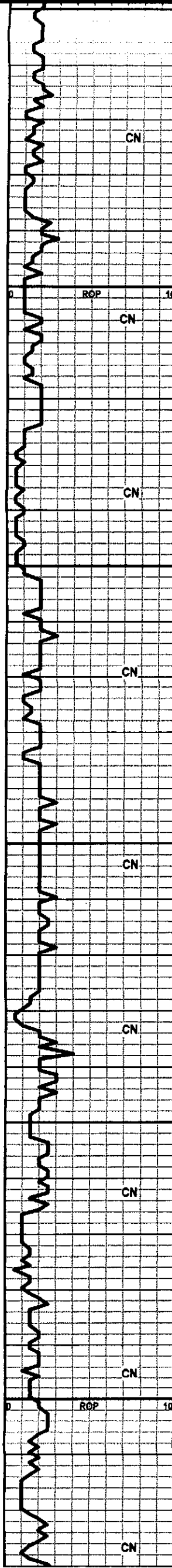
SH-LT GRY-FRM-BLKY-FOSS

LS-LT GRY-F-XLN-FOSS-SLTY-BRIT-TR INTER-GRN POR
TO NO VIS POR

WT. 9.6
VIS 47

WT. 8.9
VIS 45

100 + HW GAS INCRS @
2700'

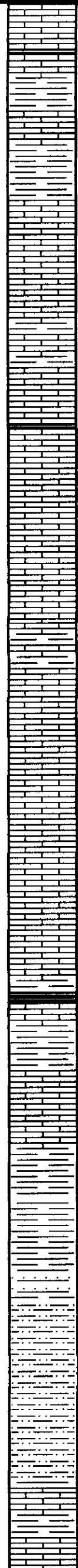
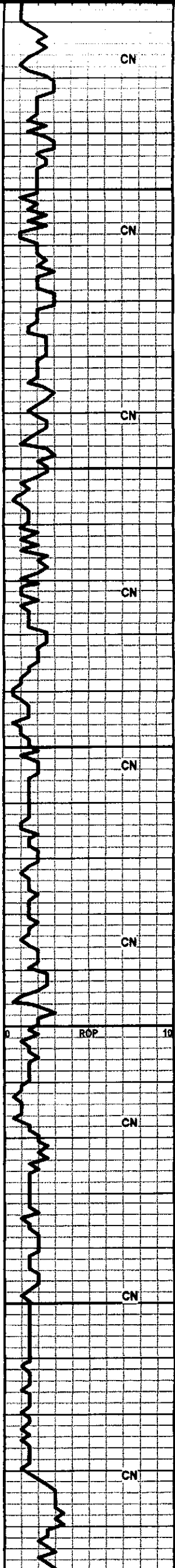


275
2600
2860
2900
2960
3000

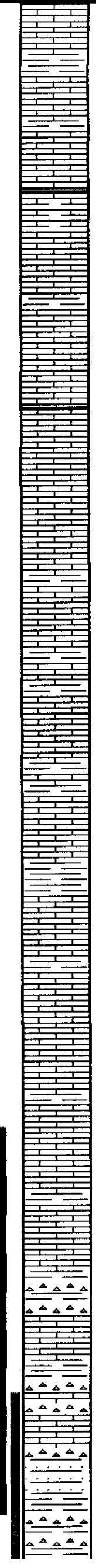
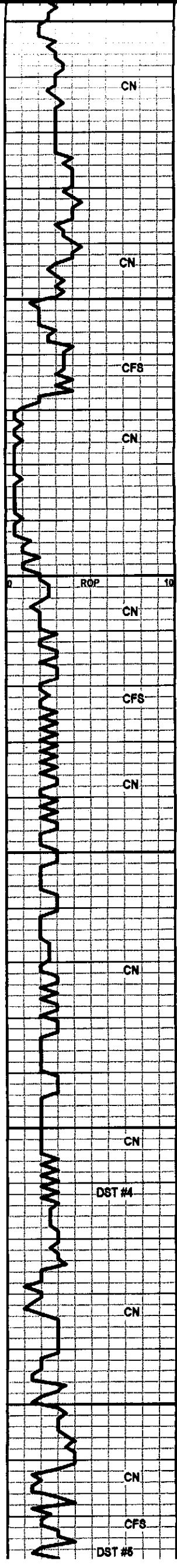
LS-GRY-F-M-XLN-FOSS-SHLY-HD-DNS
 SH-GRY-FRM-SHLY-FOSS
 LS-GRY-F-XLN-FOSS-HD-DNS
 SH-LT GRY-GUMMY-SLTY
 SH-LT GRY-SFT-V-FOSS
 LS-CRM-F-XLN-OOL-FOSS-BRIT TO HD-DNS
 SH-LT GRY-SFT-SLTY
 LS-OFF WHT-F-XLN-BRIT-GRANULAR-FOSS-DULL WHT
 MN FLOR-NO VIS SHOW
 LS-OFF WHT-F-XLN-FOSS FRAGS-HD-DNS
 SH-GRY-BLKY-LMY
 POOR SAMPLE
 POOR SAMPLE
HOWARD 2852' (-929')
 LS-TN-F-XLN-FOSS-HD-DNS
 SH-LT GRY-BLKY-FOSS
 LS-LT GRY-F-M-XLN-FOSS FRAGS-OOL-TR SH IMBD
 SH-GRY-LMY
 LS-GRY-F-XLN-FOSS-HD-DNS
 LS-A.A.
 LS-GRY-M-XLN-BRIT-SH GRY IMBD-TR OOL-TR
 FOSS-NO VIS POR
 SH-GRY-FRM-BLKY-FOSS
 LS-OFF WHT-M-GRN-CHLKY-TR FOSS FRAGS-SCATT
 DULL WHT FLOR-NO VIS SHOW
 SH-BLK-CARB
 LS-CRM/GRY-M-GRN-FOSS-CHLKY IP-DULL WHT
 FLOR-NO VIS SHOW
 SH-GRY-SPLNTY
TOPEKA 2966' (-1043')
 LS-CRM/GRY-F-XLN-CHLKY-FOSS FRAGS-TR DULL WHT
 FLOR-NO VIS SHOW
 LS-GRY-V-F-XLN-HD-DNS
 LS A.A.
 LS-CRM-F-GRN-FOSS FRAGS-BRIT TO HD-DNS W/
 CHRT-VARIG-OPQ-FOSS-FRSH
 LS-CRM-F-GRN-FOSS-TR PP POR-DULL WHT FLOR-NO
 VIS SHOW
 SH-BLK-CARB

MUD DATA @2,821'
 WT. 9.05
 VIS 60
 FIL 8.8

WT. 9.3
 VIS 60



3050	SH-BLK-CARB	
	SH-GRY-BLKY-LMY-FOSS	
	LS-GRY-F-XLN-HD-DNS	WT. 9.2 VIS 60
	SH-GRY-FRM-BLKY-LMY	
	LS-OFF WHT/GRY-F-XLN-CHLKY-FOSS-SH LT GRY-IMBD-DULL WHT FLOR-NO VIS SHOW	
	LS-OFF WHT-V-FXLN-HD-DNS	
	SH-LT GRY-BLKY-LMY	
	LS-OFF WHT-F-GRN-CHLKY IP-FOSS FRAGS-DULL WHT FLOR-NO VIS SHOW	
	SH-BLK-CARB	
3100	LS-LT BRN-F-XLN-HD-DNS	
	LS-CRMWGRY-F-GRN-FOSS-SHLY-W/CHRT-GRY-OPQ-FRS	
	LS A.A.	
	LS-CRMWGRY-F-GRN-SHLY-TR FOSS	
	LS-LT BRN-F-XLN-SH DISS-HD-DNS	
	LS-CRM-F-XLN-OOL-PR TO FR FN OOL-MOLDIC POR-DULL WHT FLOR-NO VIS SHOW	
3150	LS-TN-F-XLN-OOL-DULL WHT FLOR-NO VIS SHOW	
	LS-OFF WHT-F-XLN-HD-DNS W/ CHRT-GRY/BRN-OPQ-FRSH	
	LS-LT BRN-V-F-XLN (LITHO)-OOL-HD-DNS	WT. 9.3 VIS 56
	LS-CRMWGRY-F-XLN-BRIT-FOSS-TR SH IMBD-TR PP POR TO NO VIS POR	
	HEEBNER 3194' (-1271')	
	SH-BLK-CARB	
3200	TORONTO 3208' (-1285')	
	LS-CRM-F-XLN-OOL-W/ FN OOL-MOLDIC POR-NO VIS FLOR-NO VIS SHOW	
	DOUGLAS SH 3226' (-1303') LOG 3223' (-1300')	WT. 9.3 VIS 48
	SH-GRY-WAXY-SPLNTY	
	SH-GRY-SFT-BLKY	
	SS-FRSTY WHT-F-GRN-RNDED-WELL SRTEB-SHLY MATRIX-PR TO FR INTER-GRN POR-NO VIS SHOW	
3250	SH-GRY-SFT-STY-BLKY	
	SH-LT GRY-SLTY-MCA-HEM	
	BROWN LS 3282' (-1359')	
	LS-BRN-V-F-XLN-HD-DNS	
	LANSING 3292' (-1369')	WT. 9.3 VIS 46
	LS-OFF WHT-F-XLN-FR PP/RM VIS POR-NO VIS	



3300
3350
3400
3450
3500
3550

LS-OFF WHT-F-XLN-FR PPSM VUG POR-NO VIS FLOR-GD STRM CUT-FREE OIL-FNT ODOR

LS-OFF WHT-F-XLN-HD-DNS-NO VIS FLOR-NO VIS SHOW

LS A.A.

LS-CRM-F-XLN-FOSS FRAGS-HD-DNS

WT. 9.4
VIS 56

LS-OFF WHT-F-XLN-HD-DNS

LS-OFF WHT-F-XLN-TR PP POR-LT BRN STN IP-TR GLD FLOR-FLSH CUT WHEN CRSHD-NO VIS FREE OIL-V-FNT ODOR

WT. 9.4
VIS 56

LS-OFF WHT-F-XLN-HD-DNS-W/ PYR XLS IMBD

LS-CRM-F-XLN-OOL-FR TO GD-OOL-MOLDIC POR-NO VIS SHOW- (DRY SAMPLE) LS A.A. W/ TR RE-XLN LS IN OOL-MOLDIC POR-SCATT GLD FLOR-NO VIS CUT

LS A.A.

LS-CRM-F-XLN-OOL-TR OOL-MOLDIC POR-DULL WHT MIN FLOR-NO VIS SHOW

LS-OFF WHT-F-XLN-BRIT TO HD-CHLKY-DULL WHT MIN FLOR-NO VIS SHOW

WT. 9.4
VIS 45
FIL 12.2

LS-CRM-F-XLN-V-OOL-NO VIS POR-DULL WHT FLOR-NO VIS SHOW

LS-OFF WHT-F-XLN-CHLKY IP-DULL WHT MIN FLOR-NO VIS SHOW

LS-OFF WHT-F-XLN-BRIT TO HD-FOSS-CHLKY-NO VIS SHOW (1 PC) TR VUG POR W/ LT BRN STN

LS-OFF WHT-F-XLN-OOL-HD-DNS

LS-OFF WHT-F-XLN-OOL-GD-OOL-MOLDIC POR-NO VIS SHOW

LS-TN-GRY-F-XLN-BRIT TO HD-TR FOSS-DNS

WT. 9.4
VIS 52

LS-OFF WHT-F-XLN-CHLKY-DNS

LS A.A.

LS-TN-F-XLN-BRIT-OOL-DNS-NO VIS SHOW

WT. 9.4
VIS 58

LS A.A.

BASE OF THE KANSAS CITY

DST #4
3500'-3570'
REC-16 FT DRILLING
MUD I
IBLW-VERY WK BLW FOR 13 MIN AND DIED
FBLW-NO BLW
15/30/15/30
SIP-97.9-74.13
IFP-69.63-69.45
FFP-63.6-65.7
HP-1788.67-1749.83

SHALES -RED-GREEN-SPLNTY W/ CHRT-TN-OPQ-FRSH

LS-TN-F-XLN-OOL-HD-DNS

WT. 9.4
VIS 58

SHALES AND CHRT A.A.

LS-TN-F-XLN-FOSS-TR OOL-HD-DNS

DST #5
3498'-3590'
REC-DRILLING MUD
IBLW-VERY WK BLW FOR 13 MIN AND DIED
FBLW-VERY WK BLW FOR 6 MIN AND DIED
15/60/15/60
SIP-146.61-136.74
IFP-70.22-75.02
FFP-75.92-90.46
HP-1807.62-1788.63

100+ HW GAS INCRS@
3570'

SS-TRANS-LT BRN-FRI TO HD-RNDED-WELL SRTED-SLI TR CALC CMT-NO VIS FLOR-GD STRM CUT-FNT ODOR-GAS BUB TR FREE OIL

SIP-146.61-136.74
IFP-70.22-75.02
FFP-75.92-90.46
HP-1807.62-1788.63

SHALES-RD-GRN-GRY W/ CHRT-OFF WHT-TRIP IP-DK BK STN-TO CHRT-VARIG-OPQ-FRSH

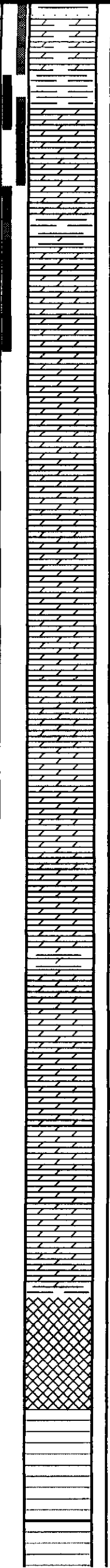
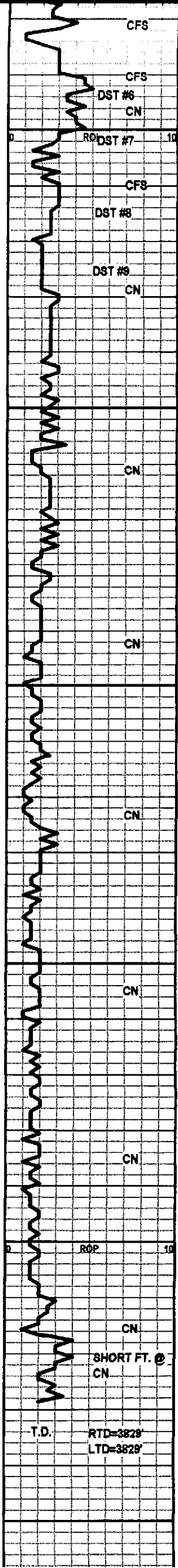
SS-TRANS-LT BRN-FRI TO HD-RNDED-WELL SRTED-T BRN STN-NO

MUD DATA @ 3,429'
WT. 9.65
VIS 45
FIL 12.2

DST #4
3500'-3570'
REC-16 FT DRILLING
MUD I
IBLW-VERY WK BLW FOR 13 MIN AND DIED
FBLW-NO BLW
15/30/15/30
SIP-97.9-74.13
IFP-69.63-69.45
FFP-63.6-65.7
HP-1788.67-1749.83

DST #5
3498'-3590'
REC-DRILLING MUD
IBLW-VERY WK BLW FOR 13 MIN AND DIED
FBLW-VERY WK BLW FOR 6 MIN AND DIED
15/60/15/60
SIP-146.61-136.74
IFP-70.22-75.02
FFP-75.92-90.46
HP-1807.62-1788.63

100+ HW GAS INCRS@
3570'



SS-TRANS-LT BRN-FRI TO HD-RNDED-WELL SKTED-T BRN STN-NO VIS FLOR-FLSH CUT

DOLO-CRM-F-XLN-OOL-PR TO FR INTER-PRT POR-LT BRN STN-SCATT GLD FLOR-FLSH CUT WHEN CRSHED-

ARBUCKLE 3595' (-1672')

PLUGGED BIT/POOR SAMPLES

DOLO-TN-F-GRN-OOL-SNDY TEX-TR INTER-GRN POR-TR LT BRN STN-SCATT FLOR-FLSH CUT-FNT ODOR

DOLO-DK GRY-F-GRN-SNDY TEX-TR INTER-GRN /MUG POR-DK BLK STN-NO VIS FLOR-FLSH CUT WHEN CRSHED-FNT ODOR

DOLO-OFF WHT/TN-M-XLN-OOL-TR INTER-GRN POR-DK BLK STN-FLSH CUT-STRNG ODOR

DOLO-OFF WHT-TN-M-XLN-OOL-SNDY TEX-TR INTER-GRN-DK BLK STN-TR FLOH CUT-FNT ODOR

DOLO-OFF WHT-F-GRN-OOL-HD-DSN W/ (1 PC) TR PR INTER-GRN POR-DK BLK STN

DOLO-OFF WHT-CRS-GRN-PR TO FR-INTER-GRN POR-NO VIS SHOW

DOLO-OFF WHT-CRS-GRN-FR INTER-GRN POR-NO VIS SHOW

DOLO A.A.

DOLO-OFF WHT-CRS-GRN-FR INTER-GRN TO NO VIS POR-NO VIS SHOW

DOLO A.A.

DOLO-OFF WHT-M-GRN-HD-DNS-TR SNDY TEX IMBD-NO VIS SHOW

DOLO-OFF WHT-CRS GRN-TR SNDY TEX-PR TO FR INTER-GRN/FRAC POR-DULL WHT FLOR-NO VIS SHOW

DOLO-OFF WHT-CRS-GRN-BRIT-OOL-TR SNDY TEX-NO VIS SHOW

DOLO-OFF WHT-CRS-GRN-BRIT-TR SNDY TEX-NO VIS SHOW

DOLO-OFF WHT-CRS-GRN-SNDY TEX IP-GLAU IMBD-FR INTER-GRN POR-NO VIS SHOW

SHALES-RED-GRN-BLK-W/ SND GRNS W GLAU IMBD-DOLO-OFF WHT-F-GRN-SNDY TEX-NO VIS SHOW

DOLO-OFF WHT-V-CRS XLS-W/DOLO-TN-F-XLN-HD-DNS-BRITE WHT FLOR-NO VIS SHOW

DOLO-TN-CRS XLN-BRIT TO HD-TR VUG POR-DULL WHT FLOR-NO VIS CUT

DOLO-OFF WHT-CRS XLN-FR INTER-GRN POR-TR VUG-SCATT WHT FLOR-NO VIS CUT TR GLAU IMBD IP

DOLO A.A. W/ SHALES-GRY-RD-SPLNTY

DOLO-OFF WHT-CRS GRN-TR SH IMBD-SNDY TEX IP-SCATT DULLWHT FLOR-NO VIS CUT

QTZ-TRANS-V-HD-FRAC-BRITE WHT FLOR-NO VIS SHOW

SH-RED-SPLNTY

QTZ-TRANS-PINK-FRAC-BRITE WHT FLOR-NO VIS SHOW-LOOSE SND GRNS IN TRAY

100+ HW GAS INCRS @3590'	MUD DATA @ 3,579 WT. 9.6 VIS 67 FIL 9.2
100+ HW GAS INCRS @3600'	MUD DATA @ 3,600 WT. 9.1 VIS 44 FIL 9.8
25 UNIT GAS @ 3620'	INCRS WT. 9.3 VIS 51
20 UNIT HW GAS INCRS @3630'	MUD DATA @ 3,620 WT. 9.15 VIS 44 FIL 8.0
	DST #6 3590'-3600' REC-240 DRILLING MUD IBLW-WK BLW FOR 16 MIN FBLW-NO BLW 15/30/15/30 SIP-1598.23-1500.42 IFP-157.5-151.18 FFP-151.68-184.07 HP-1710.47-1724.21
	DST #7 3605'-3620' REC-275 DRILLING MUD IBLW-WK BLW THRU OUT FBLW-NO BLW 15/30/15/30 SIP-190.27-185.39 IFP-98.32-133.24 FFP-165.36-169.88 HP-1767.5-1732.55
WT. 9.1 VIS 53 LCM 3#	DST #8 REC-10 FT DRILLING MUD IBLW-WK BLW FOR 8 MIN AND DIED FBLW-NO BLW 15/30/15/30 SIP-1044.79-961.14 IFP-21.11-25.39 FFP-24.04-26.68 HP-1788.42-1740.16
	DST #9 3620'-3640' REC-15 FT DRILLING MUD IBLW-WK BLW FOR 8 MIN AND DIED FBLW-NO BLW 15/30/15/30 SIP-827.69-623.97 IFP-40.53-41.26 FFP-41.51-43.51 HP-1772.49-1729.52
	MUD DATA @ 3,796 WT. 8.8 VIS 48 FIL 8.8

3600
3650
3700
3750
3800
3850

Table with a grid of 20 columns and 20 rows.

Table with a grid of 20 columns and 20 rows.

Table with a grid of 20 columns and 20 rows. The right half (columns 10-20) contains the number 3900.

Table with a grid of 20 columns and 20 rows.

