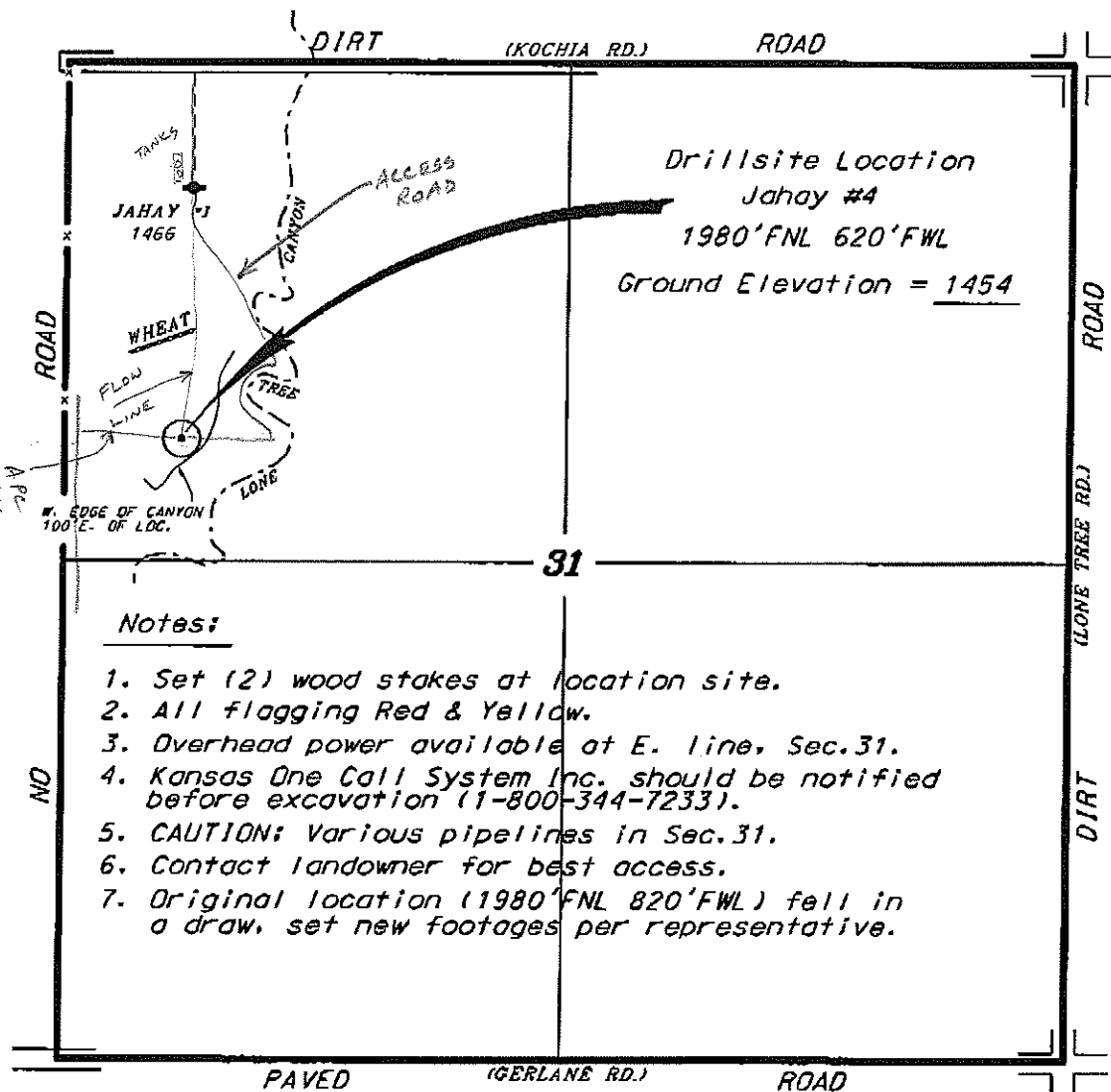
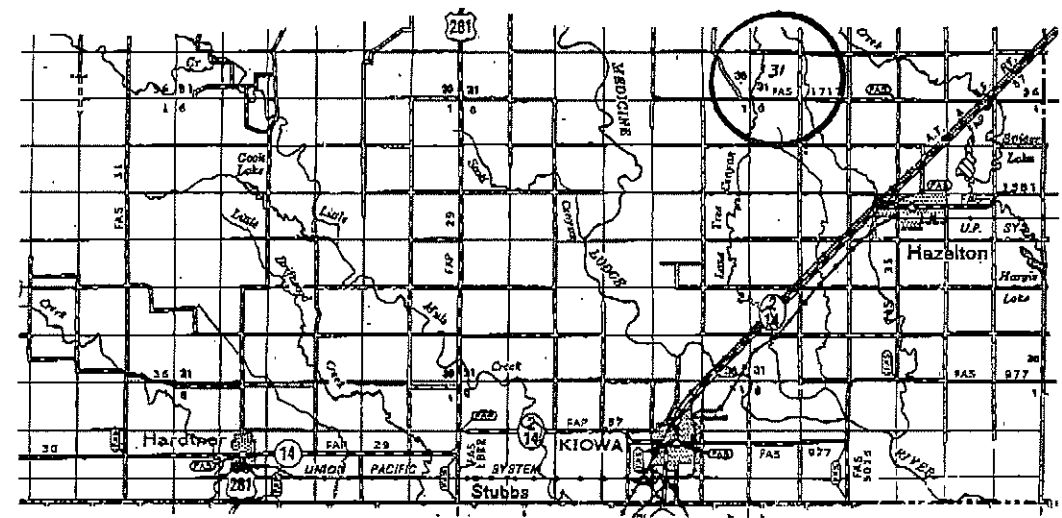


WOOLSEY OPERATING COMPANY, LLC
JAHAY LEASE
NW. 1/4, SECTION 31, T33S, R10W
BARBER COUNTY, KANSAS



*Ingress and egress to location as shown on this plat is per usage only and may not be legally opened for public use. Contact landowner, tenant and county road department for access.



*Controlling data is based upon the best maps and photographs available to us and upon a regular section of land containing 640 acres.

*Approximate section lines were determined using the normal standard of care of oilfield surveyors practicing in the state of Kansas. The section corners, which establish the precise section lines, were not necessarily located, and the exact location of the drillsite location in the section is not guaranteed. Therefore, the operator accepting this service and occupying this plot and all other parties relying thereon agree to hold Central Kansas Oilfield Services, Inc., its officers and employees harmless from all losses, costs and expenses and said entities released from any liability from incidental or consequential damages.

*Elevations derived from National Geodetic Vertical Datum.

April 11, 2011

Date

CENTRAL KANSAS OILFIELD SERVICES, INC. (620)792-1977

Received Time: Apr. 14, 2011, 9:53AM No. 8710