

KEVIN L. KESSLER
CONSULTING PETROLEUM GEOLOGIST
 (316) 522-7338

OPERATOR : MULL DRILLING CO. INC.
LEASE : ALBERS WELL # : 4 - 17
LOCATION : 335' FNL & 1944' FEL
SEC: 17 TWP : 17 S RGE : 23 W
COUNTY : NESS STATE : KANSAS

ELEVATION
KB : 2456
GL : 2451
 MEASUREMENTS FROM
KB

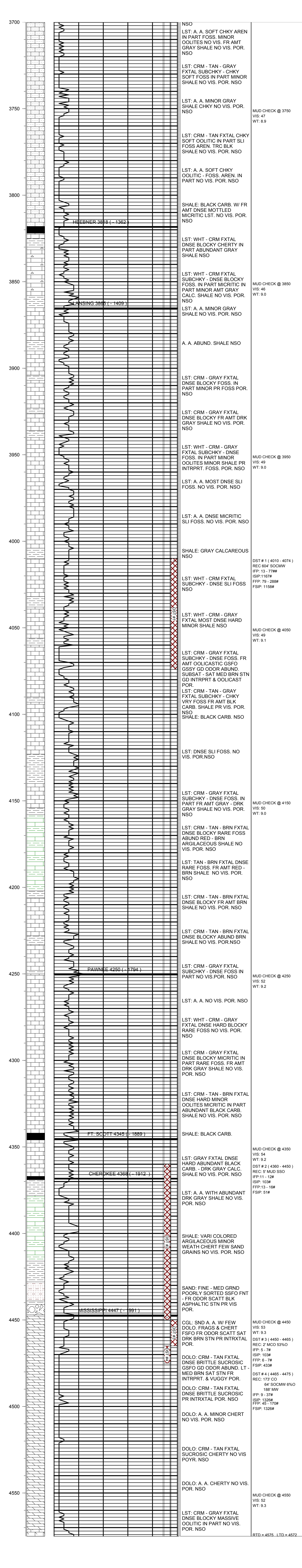
CONTRACTOR : W W DRILLING RIG # 10
COMM: 01/31/2011 COMP : 02/08/2011
RTD : 4575 LOG TD : 4572
SAMPLES SAVED FROM : 3600 TO: RTD
GEOLOGICAL SUPERVISION FROM : 3600 TO : RTD
MUD UP : 3600 TYPE MUD : CHEMICAL

CASING RECORD
SURFACE :
8 5/8 @ 224'
PRODUCTION :
NONE

FORMATION	TOP	LOG	DATUM	TOP	SAMPLE	DATUM	STRUCT. COMP.
HEEBNER	3824		- 1368	3818		- 1362	- 06
LANSING	3861		- 1405	3865		- 1409	- 07
STARK							
PAWNEE	4251		- 1795	4250		- 1794	- 12
FT SCOTT	4345		- 1889	4345		- 1889	- 11
CHEROKEE	4366		- 1910	4368		- 1912	- 10
MISSISSIPPI	4448		- 1992	4447		- 1991	- 20

ELECTRICAL SURVEYS:
 DIL
 CNL / CDL
 MICRO
 SONIC

REFERENCE WELL FOR STRUCTURAL COMPARISON :
 MULL DRILLING CO INC. # 1 - 17 ALBERS SEC.17 - T 17 S - R 23 W NESS COUNTY KANSAS



COMMENTS:
 DUE TO MARGINAL DST RESULTS & POOR LOG CALCULATIONS THIS WELL WAS
 PLUGGED AS DRY & ABANDONED

KEVIN L. KESSLER