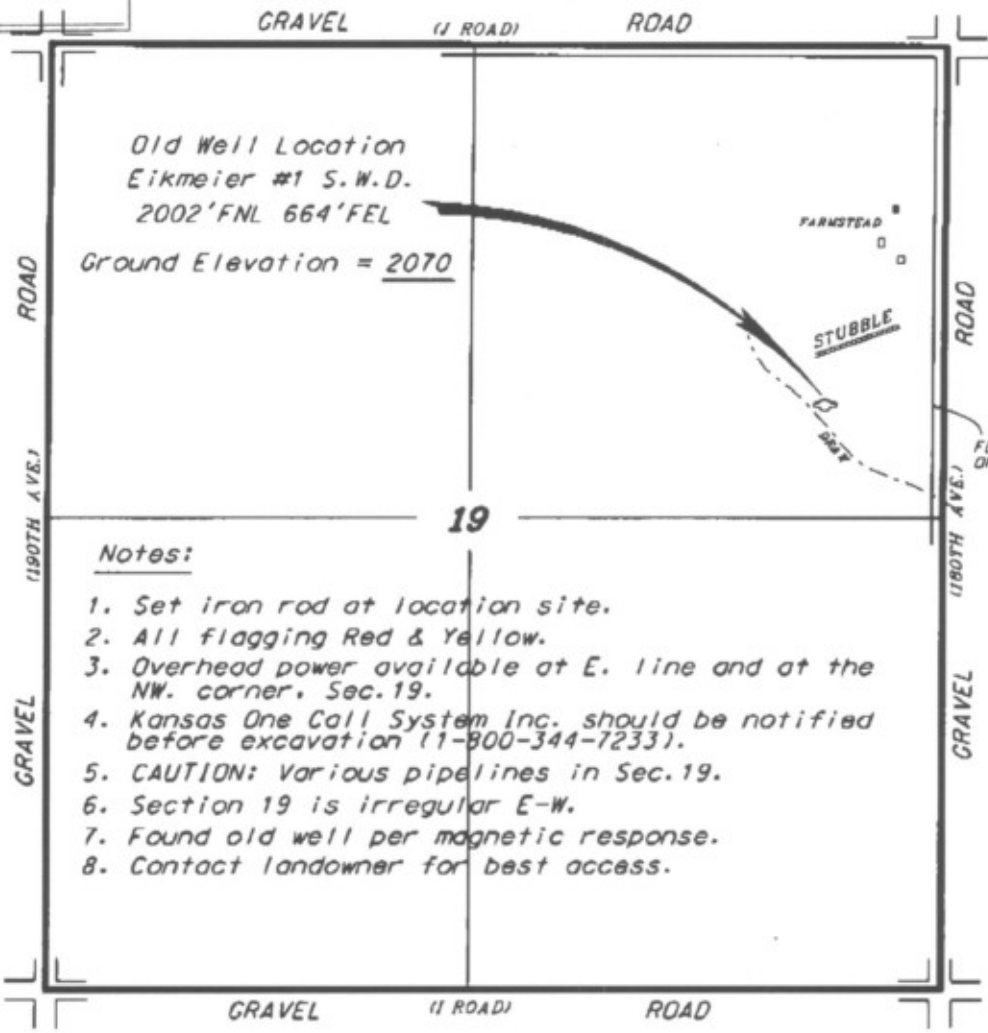


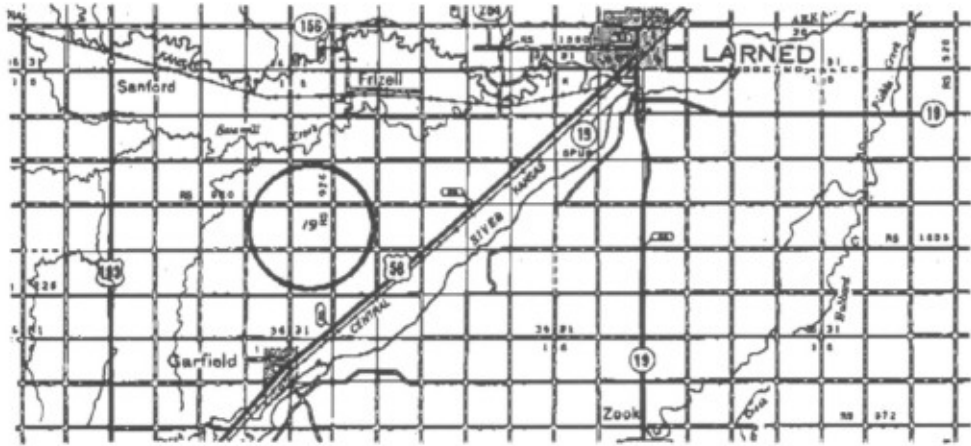
RECEIVED
 APR 13 2011
 BY: _____

**CLUTE OIL CORPORATION
 EIKMEIER LEASE
 NE.1/4, SECTION 19, T22S, R17W
 PAWNEE COUNTY, KANSAS**



Notes:

1. Set iron rod at location site.
2. All flagging Red & Yellow.
3. Overhead power available at E. line and at the NW. corner, Sec.19.
4. Kansas One Call System Inc. should be notified before excavation (1-800-344-7233).
5. CAUTION: Various pipelines in Sec.19.
6. Section 19 is irregular E-W.
7. Found old well per magnetic response.
8. Contact landowner for best access.



* Controlling data is based upon the best maps and photographs available to us and upon a regular section of land containing 360 acres.
 * Approximate section lines were determined using the normal standard of care of oilfield surveyors practicing in the state of Kansas. The section corners, which establish the precise section lines, were not necessarily located, and the exact location of the drillsite location in the section is not guaranteed. Therefore, the operator assuming this service and accepting this plot and all other parties relying thereon agree to hold Central Kansas Oilfield Services, Inc., its officers and employees harmless from all losses, costs and expenses and hold entitled released from any liability from incidental or consequential damages.
 * Elevations derived from National Geodetic Vertical Datum.

Date April 11, 2011

* Ingress and egress to location as shown on this plot is for usage only and may not be legally opened for public use. Contact landowner, tenant and county road department for access.