



DRILL STEM TEST REPORT

Prepared For: **F.G.Holl Company L.L.C.**

9431 East Central Suite 100
Wichita, Kansas 67206-2563

ATTN: Ryan Greenbaum

10-22s-14w Stafford

Krupp #1-10

Start Date: 2011.03.30 @ 00:00:00

End Date: 2011.03.30 @ 00:00:00

Job Ticket #: 16039 DST #: 4

Superior Testers Enterprises LLC
PO Box 138 Great Bend KS 67530
1-800-792-6902

Printed: 2011.03.30 @ 23:11:57



DRILL STEM TEST REPORT

F.G.Holl Company L.L.C.

Krupp #1-10

9431 East Central Suite 100
Wichita, Kansas 67206-2563

10-22s-14w Stafford

ATTN: Ryan Greenbaum

Job Ticket: 16039

DST#: 4

Test Start: 2011.03.30 @ 00:00:00

GENERAL INFORMATION:

Formation: **Kansas City" J "**

Deviated: No Whipstock: ft (KB)

Time Tool Opened: 00:00:00

Time Test Ended: 00:00:00

Test Type: Conventional Bottom Hole (Initial)

Tester: Gene Budig

Unit No: 3335-42

Interval: 3599.00 ft (KB) To 3614.00 ft (KB) (TVD)

Reference Elevations: 1943.00 ft (KB)

Total Depth: 3614.00 ft (KB) (TVD)

1935.00 ft (CF)

Hole Diameter: 7.88 inches Hole Condition: Fair

KB to GR/CF: 8.00 ft

Serial #: 26180 Inside

Press @ RunDepth: 720.18 psia @ 3615.00 ft (KB)

Capacity: 5000.00 psia

Start Date: 2011.03.30

End Date: 2011.03.30

Last Calib.: 2011.03.30

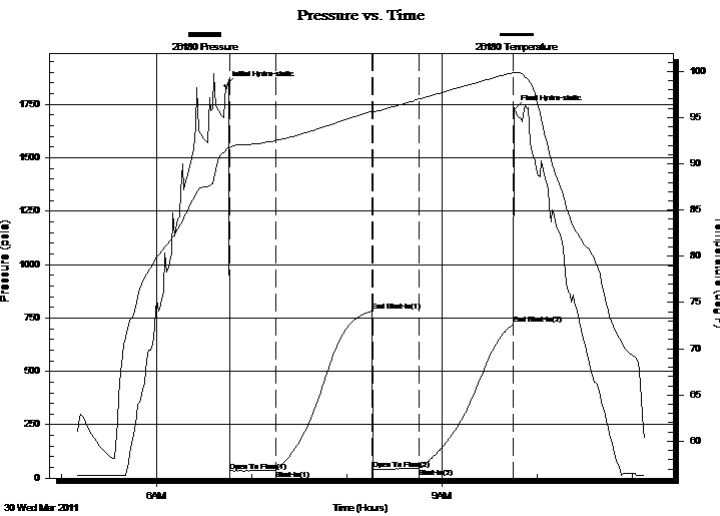
Start Time: 05:10:00

End Time: 11:07:29

Time On Btm: 2011.03.30 @ 06:43:29

Time Off Btm: 2011.03.30 @ 09:45:30

TEST COMMENT: 1st Opening 30 Minutes-Weak building blow built to 4 inches into the water and started decreasing
 1st Shut-In 60 Minutes-No blow back
 2nd Opening 30 Minutes-Weak steady 1/2 inch blow
 2nd Shut-In 60 Minutes-No blow back



PRESSURE SUMMARY

Time (Min.)	Pressure (psia)	Temp (deg F)	Annotation
0	1837.57	91.39	Initial Hydro-static
3	33.19	91.72	Open To Flow (1)
33	36.62	92.53	Shut-In(1)
93	780.97	95.67	End Shut-In(1)
94	39.99	95.67	Open To Flow (2)
123	44.65	97.00	Shut-In(2)
182	720.18	99.86	End Shut-In(2)
183	1727.33	99.89	Final Hydro-static

Recovery

Length (ft)	Description	Volume (bbl)
350.00	Gas in the pipe	4.91
50.00	Heavy oil cut mud	0.70
0.00	70% Mud 30% Oil	0.00

Gas Rates

	Choke (inches)	Pressure (psia)	Gas Rate (Mcf/d)



DRILL STEM TEST REPORT

F.G.Holl Company L.L.C.

Krupp #1-10

9431 East Central Suite 100
Wichita, Kansas 67206-2563

10-22s-14w Stafford

ATTN: Ryan Greenbaum

Job Ticket: 16039

DST#: 4

Test Start: 2011.03.30 @ 00:00:00

GENERAL INFORMATION:

Formation: **Kansas City" J "**

Deviated: No Whipstock: ft (KB)

Time Tool Opened: 00:00:00

Time Test Ended: 00:00:00

Test Type: Conventional Bottom Hole (Initial)

Tester: Gene Budig

Unit No: 3335-42

Interval: 3599.00 ft (KB) To 3614.00 ft (KB) (TVD)

Reference Elevations: 1943.00 ft (KB)

Total Depth: 3614.00 ft (KB) (TVD)

1935.00 ft (CF)

Hole Diameter: 7.88 inches Hole Condition: Fair

KB to GR/CF: 8.00 ft

Serial #: 29636 Outside

Press @ Run Depth: 708.47 psia @ 3616.00 ft (KB)

Capacity: 5000.00 psia

Start Date: 2011.03.30

End Date: 2011.03.30

Last Calib.: 2011.03.30

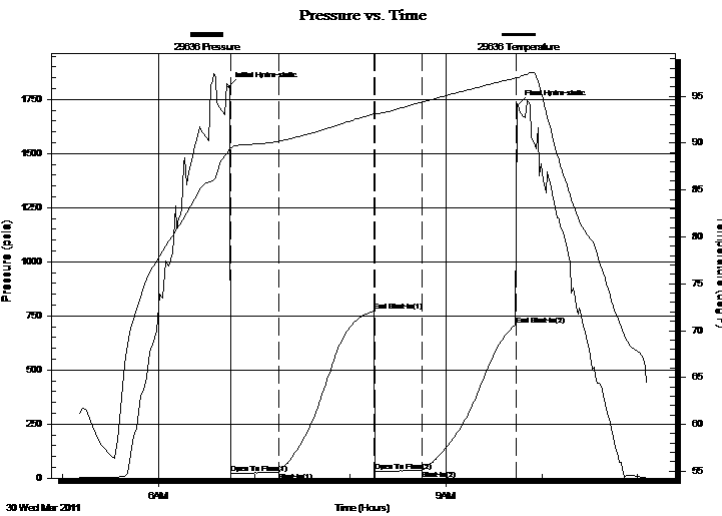
Start Time: 05:10:00

End Time: 11:05:59

Time On Btm: 2011.03.30 @ 06:44:00

Time Off Btm: 2011.03.30 @ 09:45:00

TEST COMMENT: 1st Opening 30 Minutes-Weak building blow built to 4 inches into the water and started decreasing
 1st Shut-In 60 Minutes-No blow back
 2nd Opening 30 Minutes-Weak steady 1/2 inch blow
 2nd Shut-In 60 Minutes-No blow back



PRESSURE SUMMARY

Time (Min.)	Pressure (psia)	Temp (deg F)	Annotation
0	1808.85	89.31	Initial Hydro-static
1	23.00	89.49	Open To Flow (1)
31	27.97	90.20	Shut-In(1)
91	770.43	93.11	End Shut-In(1)
92	30.65	93.15	Open To Flow (2)
121	36.21	94.38	Shut-In(2)
180	708.47	96.95	End Shut-In(2)
181	1724.53	97.02	Final Hydro-static

Recovery

Length (ft)	Description	Volume (bbl)
350.00	Gas in the pipe	4.91
50.00	Heavy oil cut mud	0.70
0.00	70% Mud 30% Oil	0.00

Gas Rates

	Choke (inches)	Pressure (psia)	Gas Rate (Mcf/d)



DRILL STEM TEST REPORT

TOOL DIAGRAM

F.G.Holl Company L.L.C.

Krupp #1-10

9431 East Central Suite 100
Wichita, Kansas 67206-2563

10-22s-14w Stafford

Job Ticket: 16039

DST#: 4

ATTN: Ryan Greenbaum

Test Start: 2011.03.30 @ 00:00:00

Tool Information

Drill Pipe:	Length: 3596.00 ft	Diameter: 3.80 inches	Volume: 50.44 bbl	Tool Weight: 2000.00 lb
Heavy Wt. Pipe:	Length: 0.00 ft	Diameter: 2.86 inches	Volume: 0.00 bbl	Weight set on Packer: 20000.00 lb
Drill Collar:	Length: 0.00 ft	Diameter: 2.76 inches	Volume: 0.00 bbl	Weight to Pull Loose: 50000.00 lb
			<u>Total Volume: 50.44 bbl</u>	Tool Chased 0.00 ft
Drill Pipe Above KB:	26.00 ft			String Weight: Initial 42000.00 lb
Depth to Top Packer:	3599.00 ft			Final 42000.00 lb
Depth to Bottom Packer:	ft			
Interval between Packers:	20.00 ft			
Tool Length:	49.00 ft			
Number of Packers:	2	Diameter: 6.75 inches		

Tool Comments:

Tool Description	Length (ft)	Serial No.	Position	Depth (ft)	Accum. Lengths
------------------	-------------	------------	----------	------------	----------------

Change Over Sub	1.00			3571.00	
Shut-In Tool	5.00			3576.00	
Hydroic Tool	5.00			3581.00	
Jars	6.00			3587.00	
Safety Joint	2.00			3589.00	
Packer	5.00			3594.00	29.00 Bottom Of Top Packer
Packer	5.00			3599.00	
Perforations	15.00			3614.00	
Recorder	1.00	91716	Inside	3615.00	
Recorder	1.00	95172	Outside	3616.00	
Bullnose	3.00			3619.00	20.00 Bottom Packers & Anchor

Total Tool Length: 49.00



DRILL STEM TEST REPORT

FLUID SUMMARY

F.G.Holl Company L.L.C.

Krupp #1-10

9431 East Central Suite 100
Wichita, Kansas 67206-2563

10-22s-14w Stafford

Job Ticket: 16039

DST#: 4

ATTN: Ryan Greenbaum

Test Start: 2011.03.30 @ 00:00:00

Mud and Cushion Information

Mud Type: Gel Chem
Mud Weight: 9.00 lb/gal
Viscosity: 69.00 sec/qt
Water Loss: 8.00 in³
Resistivity: ohm.m
Salinity: 5700.00 ppm
Filter Cake: inches

Cushion Type:
Cushion Length: ft
Cushion Volume: bbl
Gas Cushion Type:
Gas Cushion Pressure: psia

Oil API: deg API
Water Salinity: ppm

Recovery Information

Recovery Table

Length ft	Description	Volume bbl
350.00	Gas in the pipe	4.910
50.00	Heavy oil cut mud	0.701
0.00	70% Mud 30% Oil	0.000

Total Length: 400.00 ft Total Volume: 5.611 bbl

Num Fluid Samples: 0

Num Gas Bombs: 0

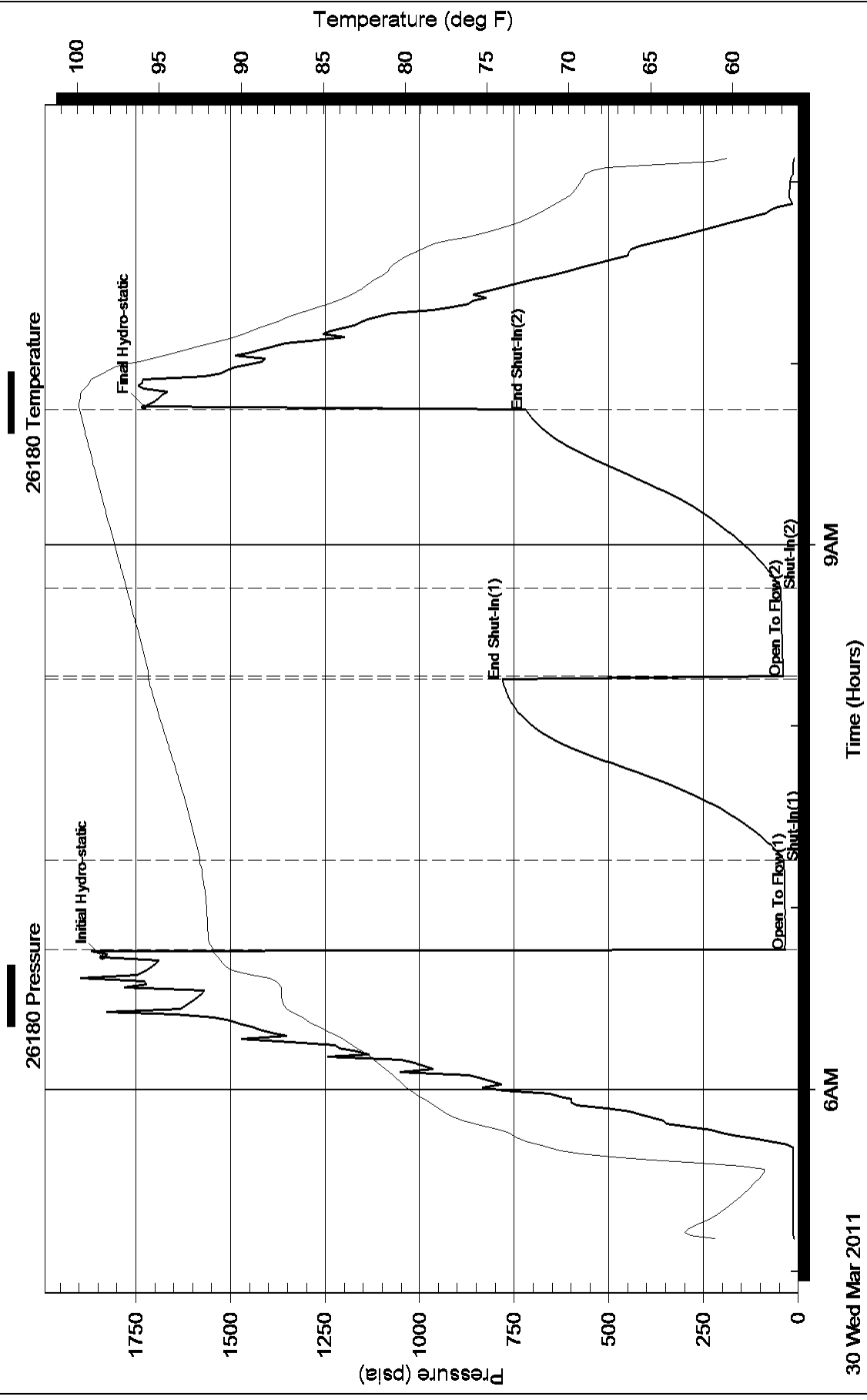
Serial #:

Laboratory Name:

Laboratory Location:

Recovery Comments:

Pressure vs. Time



30 Wed Mar 2011

9AM

Time (Hours)

6AM

