



DRILL STEM TEST REPORT

Prepared For: **F.G.Holl Company L.L.C.**

9431 East Central Suite 100
Wichita, Kansas 67206-2563

ATTN: Ryan Greenbaum

10-22s-14w Stafford

Krupp #1-10

Start Date: 2011.04.01 @ 10:30:00

End Date: 2011.04.01 @ 00:00:00

Job Ticket #: 16041 DST #: 6

Superior Testers Enterprises LLC
PO Box 138 Great Bend KS 67530
1-800-792-6902

Printed: 2011.04.01 @ 03:19:47



DRILL STEM TEST REPORT

F.G.Holl Company L.L.C.

Krupp #1-10

9431 East Central Suite 100
Wichita, Kansas 67206-2563

10-22s-14w Stafford

Job Ticket: 16041

DST#: 6

ATTN: Ryan Greenbaum

Test Start: 2011.04.01 @ 10:30:00

GENERAL INFORMATION:

Formation: **Kansas City "L"**

Deviated: No Whipstock: ft (KB)

Time Tool Opened: 00:00:00

Time Test Ended: 00:00:00

Test Type: Conventional Bottom Hole (Initial)

Tester: Gene Budig

Unit No: 3335-42

Interval: 3646.00 ft (KB) To 3670.00 ft (KB) (TVD)

Reference Elevations: 1943.00 ft (KB)

Total Depth: 3670.00 ft (KB) (TVD)

1935.00 ft (CF)

Hole Diameter: 7.88 inches Hole Condition: Fair

KB to GR/CF: 8.00 ft

Serial #: 26180 Inside

Press @ RunDepth: 86.16 psia @ 3666.00 ft (KB)

Capacity: 5000.00 psia

Start Date: 2011.04.01 End Date: 2011.04.01

Last Calib.: 2011.04.01

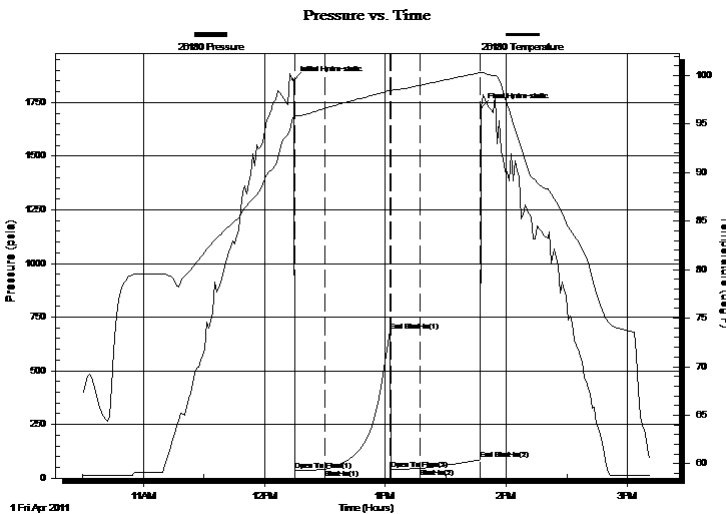
Start Time: 10:30:00 End Time: 15:11:30

Time On Btm: 2011.04.01 @ 12:14:30

Time Off Btm: 2011.04.01 @ 13:47:30

TEST COMMENT: 1st Opening 15 Minutes-Weak blow for 10 minutes and died
1st Shut-In 30 Minutes-No blow back
2nd Opening 15 Minutes-No blow
2nd Shut-In 30 Minutes-No blow back

PRESSURE SUMMARY



Time (Min.)	Pressure (psia)	Temp (deg F)	Annotation
0	1854.08	95.74	Initial Hydro-static
1	37.46	95.85	Open To Flow (1)
16	39.36	96.61	Shut-In(1)
49	683.26	98.48	End Shut-In(1)
49	41.51	98.49	Open To Flow (2)
63	44.45	98.99	Shut-In(2)
93	86.16	100.29	End Shut-In(2)
93	1724.87	100.32	Final Hydro-static

Recovery

Length (ft)	Description	Volume (bbl)
10.00	oil cut mud 85% mud 15% oil	0.14

Gas Rates

Choke (inches)	Pressure (psia)	Gas Rate (Mcf/d)



DRILL STEM TEST REPORT

F.G.Holl Company L.L.C.

Krupp #1-10

9431 East Central Suite 100
Wichita, Kansas 67206-2563

10-22s-14w Stafford

ATTN: Ryan Greenbaum

Job Ticket: 16041

DST#: 6

Test Start: 2011.04.01 @ 10:30:00

GENERAL INFORMATION:

Formation: **Kansas City "L"**

Deviated: No Whipstock: ft (KB)

Time Tool Opened: 00:00:00

Time Test Ended: 00:00:00

Test Type: Conventional Bottom Hole (Initial)

Tester: Gene Budig

Unit No: 3335-42

Interval: 3646.00 ft (KB) To 3670.00 ft (KB) (TVD)

Reference Elevations: 1943.00 ft (KB)

Total Depth: 3670.00 ft (KB) (TVD)

1935.00 ft (CF)

Hole Diameter: 7.88 inches Hole Condition: Fair

KB to GR/CF: 8.00 ft

Serial #: 29636 Outside

Press @ RunDepth: 79.66 psia @ 3667.00 ft (KB)

Capacity: 5000.00 psia

Start Date: 2011.04.01 End Date: 2011.04.01

Last Calib.: 2011.04.01

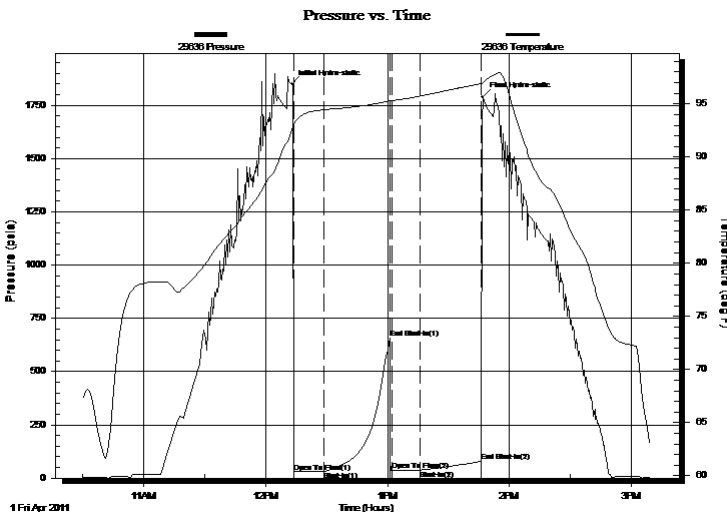
Start Time: 10:30:00 End Time: 15:09:29

Time On Btm: 2011.04.01 @ 12:13:00

Time Off Btm: 2011.04.01 @ 13:47:00

TEST COMMENT: 1st Opening 15 Minutes-Weak blow for 10 minutes and died
1st Shut-In 30 Minutes-No blow back
2nd Opening 15 Minutes-No blow
2nd Shut-In 30 Minutes-No blow back

PRESSURE SUMMARY



Time (Min.)	Pressure (psia)	Temp (deg F)	Annotation
0	1849.32	92.60	Initial Hydro-static
1	29.64	93.08	Open To Flow (1)
16	31.43	94.46	Shut-In(1)
48	658.50	95.30	End Shut-In(1)
49	34.90	95.34	Open To Flow (2)
63	37.84	95.74	Shut-In(2)
94	79.66	96.93	End Shut-In(2)
94	1790.63	97.02	Final Hydro-static

Recovery

Length (ft)	Description	Volume (bbl)
10.00	oil cut mud 85% mud 15% oil	0.14

Gas Rates

Choke (inches)	Pressure (psia)	Gas Rate (Mcf/d)



DRILL STEM TEST REPORT

TOOL DIAGRAM

F.G.Holl Company L.L.C.

Krupp #1-10

9431 East Central Suite 100
Wichita, Kansas 67206-2563

10-22s-14w Stafford

ATTN: Ryan Greenbaum

Job Ticket: 16041

DST#: 6

Test Start: 2011.04.01 @ 10:30:00

Tool Information

Drill Pipe:	Length: 3635.00 ft	Diameter: 3.80 inches	Volume: 50.99 bbl	Tool Weight: 2000.00 lb
Heavy Wt. Pipe:	Length: 0.00 ft	Diameter: 2.86 inches	Volume: 0.00 bbl	Weight set on Packer: 20000.00 lb
Drill Collar:	Length: 0.00 ft	Diameter: 2.25 inches	Volume: 0.00 bbl	Weight to Pull Loose: 55000.00 lb
			<u>Total Volume: 50.99 bbl</u>	Tool Chased 0.00 ft
Drill Pipe Above KB:	18.00 ft			String Weight: Initial 44000.00 lb
Depth to Top Packer:	3646.00 ft			Final 44000.00 lb
Depth to Bottom Packer:	ft			
Interval between Packers:	24.00 ft			
Tool Length:	53.00 ft			
Number of Packers:	2	Diameter: 6.75 inches		

Tool Comments:

Tool Description	Length (ft)	Serial No.	Position	Depth (ft)	Accum. Lengths
------------------	-------------	------------	----------	------------	----------------

Change Over Sub	1.00			3618.00	
Shut-In Tool	5.00			3623.00	
Hydroic Tool	5.00			3628.00	
Jars	6.00			3634.00	
Safety Joint	2.00			3636.00	
Packer	5.00			3641.00	29.00 Bottom Of Top Packer
Packer	5.00			3646.00	
Perforations	19.00			3665.00	
Recorder	1.00	91716	Inside	3666.00	
Recorder	1.00	95172	Outside	3667.00	
Bullnose	3.00			3670.00	24.00 Bottom Packers & Anchor

Total Tool Length: 53.00



DRILL STEM TEST REPORT

FLUID SUMMARY

F.G.Holl Company L.L.C.

Krupp #1-10

9431 East Central Suite 100
Wichita, Kansas 67206-2563

10-22s-14w Stafford

Job Ticket: 16041

DST#: 6

ATTN: Ryan Greenbaum

Test Start: 2011.04.01 @ 10:30:00

Mud and Cushion Information

Mud Type: Gel Chem
Mud Weight: 9.00 lb/gal
Viscosity: 59.00 sec/qt
Water Loss: 10.20 in³
Resistivity: ohm.m
Salinity: 5200.00 ppm
Filter Cake: 1.00 inches

Cushion Type:
Cushion Length: ft
Cushion Volume: bbl
Gas Cushion Type:
Gas Cushion Pressure: psia

Oil API: deg API
Water Salinity: ppm

Recovery Information

Recovery Table

Length ft	Description	Volume bbl
10.00	oil cut mud 85% mud 15% oil	0.140

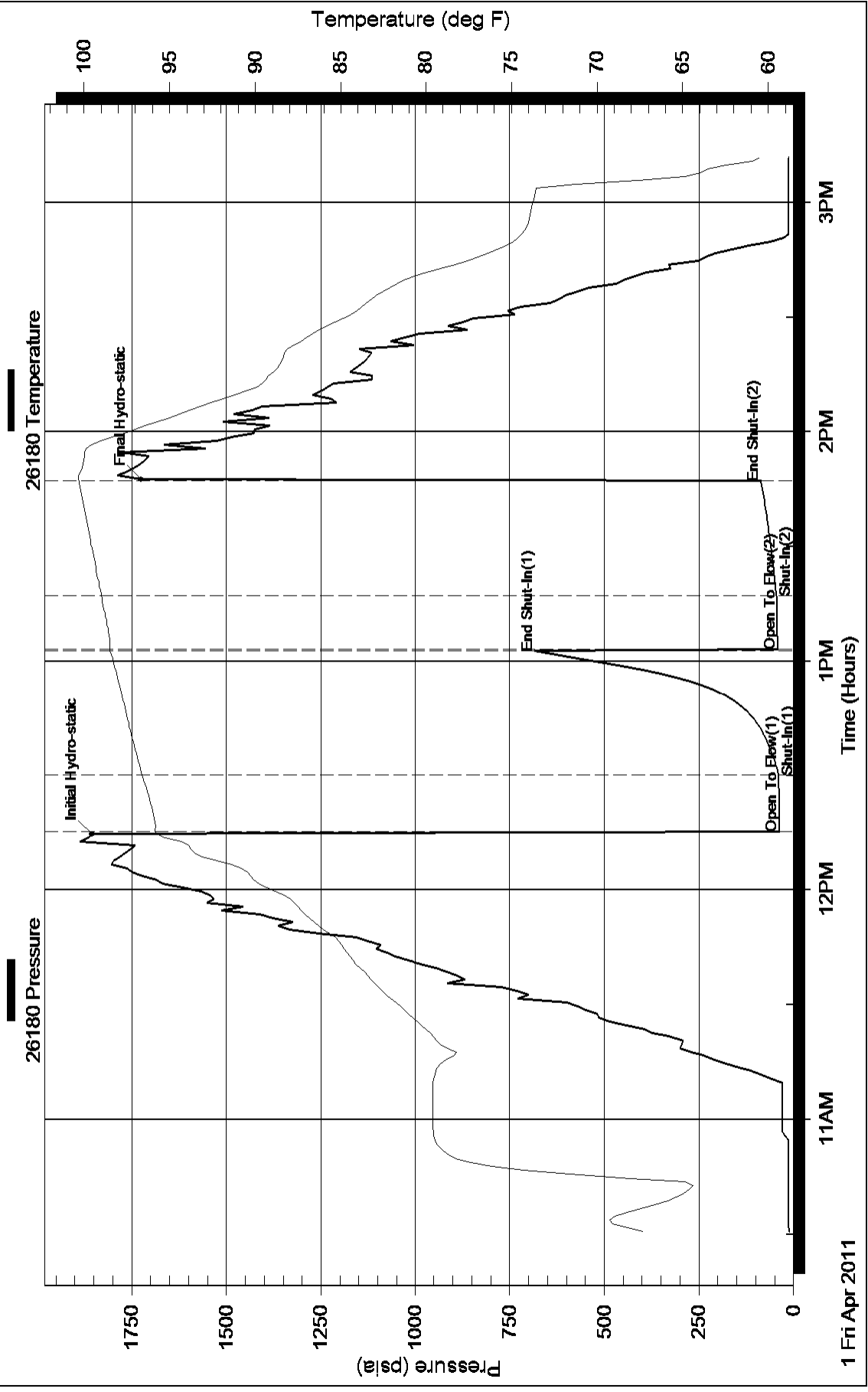
Total Length: 10.00 ft Total Volume: bbl

Num Fluid Samples: 0 Num Gas Bombs: 0 Serial #:

Laboratory Name: Laboratory Location:

Recovery Comments:

Pressure vs. Time



Pressure vs. Time

29636 Pressure

29636 Temperature

