



DRILL STEM TEST REPORT

Prepared For: **F.G.Holl Company L.L.C.**

9431 East Central Suite 100
Wichita, Kansas 67206-2563

ATTN: Ryan Greenbaum

21-21s-14w Stafford

Bayer East #3

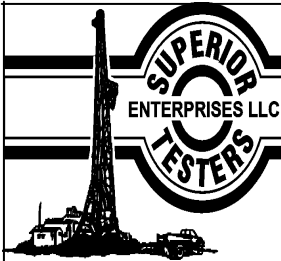
Start Date: 2011.03.16 @ 04:10:00

End Date: 2011.03.16 @ 00:00:00

Job Ticket #: 15779 DST #: 3

Superior Testers Enterprises LLC
PO Box 138 Great Bend KS 67530
1-800-792-6902

Printed: 2011.03.16 @ 08:25:14



DRILL STEM TEST REPORT

F.G.Holl Company L.L.C.

Bayer East #3

9431 East Central Suite 100
Wichita, Kansas 67206-2563

21-21s-14w Stafford

Job Ticket: 15779

DST#: 3

ATTN: Ryan Greenbaum

Test Start: 2011.03.16 @ 04:10:00

GENERAL INFORMATION:

Formation: **Kansas City "K"**

Deviated: No Whipstock: ft (KB)

Time Tool Opened: 00:00:00

Time Test Ended: 00:00:00

Test Type: Conventional Bottom Hole (Initial)

Tester: Gene Budig

Unit No: 3335-29

Interval: 3591.00 ft (KB) To 3610.00 ft (KB) (TVD)

Reference Elevations: 1943.00 ft (KB)

Total Depth: 3610.00 ft (KB) (TVD)

1935.00 ft (CF)

Hole Diameter: 7.88 inches Hole Condition: Fair

KB to GR/CF: 8.00 ft

Serial #: 4005 Inside

Press @ RunDepth: 39.08 psia @ 3606.00 ft (KB)

Capacity: 5000.00 psia

Start Date: 2011.03.16 End Date: 2011.03.16

Last Calib.: 2011.03.16

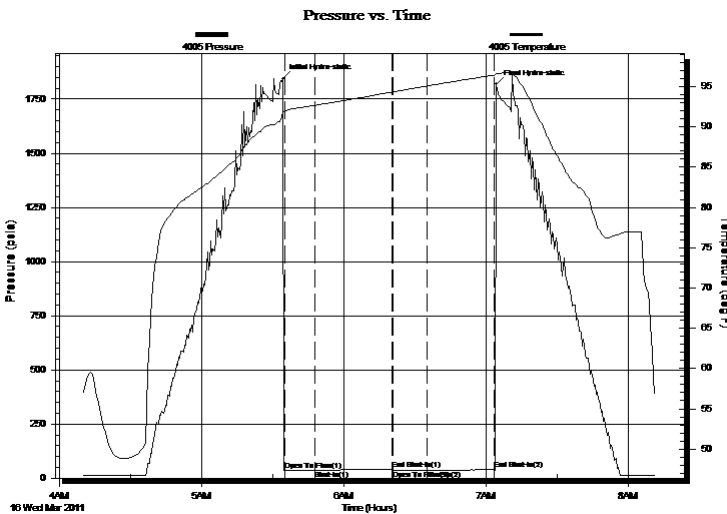
Start Time: 04:10:00 End Time: 08:11:30

Time On Btm: 2011.03.16 @ 05:34:29

Time Off Btm: 2011.03.16 @ 07:04:30

TEST COMMENT: 1st Opening 15 Minutes weak blow for 12 minutes and died
 1st Shut-In 30 Minutes-No blow back
 2nd Opening 15 Minutes-No blow
 2nd Shut-In 30 Minutes-No blow back

PRESSURE SUMMARY



Time (Min.)	Pressure (psia)	Temp (deg F)	Annotation
0	1844.29	91.70	Initial Hydro-static
1	37.19	91.87	Open To Flow (1)
14	37.98	92.69	Shut-In(1)
47	41.66	94.32	End Shut-In(1)
47	37.10	94.36	Open To Flow (2)
61	37.41	95.06	Shut-In(2)
90	39.08	96.42	End Shut-In(2)
91	1817.81	96.58	Final Hydro-static

Recovery

Length (ft)	Description	Volume (bbl)
1.00	slightly oil cut mud	0.01

Gas Rates

Choke (inches)	Pressure (psia)	Gas Rate (Mcf/d)



DRILL STEM TEST REPORT

F.G.Holl Company L.L.C.

Bayer East #3

9431 East Central Suite 100
Wichita, Kansas 67206-2563

21-21s-14w Stafford

Job Ticket: 15779

DST#: 3

ATTN: Ryan Greenbaum

Test Start: 2011.03.16 @ 04:10:00

GENERAL INFORMATION:

Formation: **Kansas City "K"**

Deviated: No Whipstock: ft (KB)

Time Tool Opened: 00:00:00

Time Test Ended: 00:00:00

Test Type: Conventional Bottom Hole (Initial)

Tester: Gene Budig

Unit No: 3335-29

Interval: 3591.00 ft (KB) To 3610.00 ft (KB) (TVD)

Reference Elevations: 1943.00 ft (KB)

Total Depth: 3610.00 ft (KB) (TVD)

1935.00 ft (CF)

Hole Diameter: 7.88 inches Hole Condition: Fair

KB to GR/CF: 8.00 ft

Serial #: 29636 Outside

Press @ RunDepth: 33.22 psia @ 3607.00 ft (KB)

Capacity: 5000.00 psia

Start Date: 2011.03.16 End Date: 2011.03.16

Last Calib.: 2011.03.16

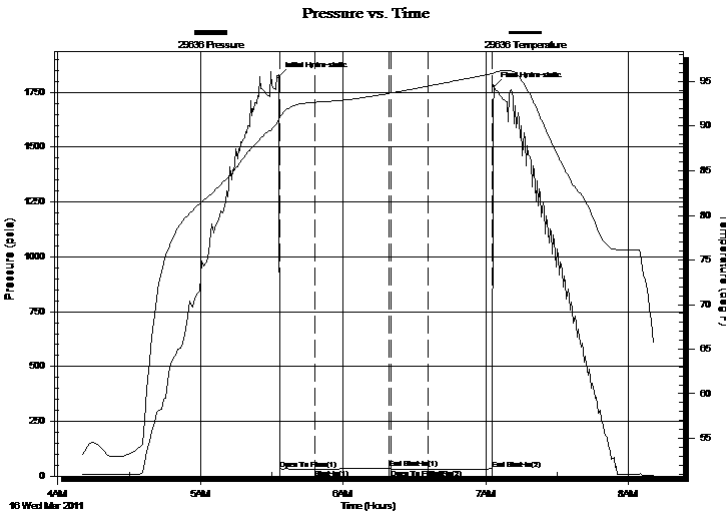
Start Time: 04:10:00 End Time: 08:11:00

Time On Btm: 2011.03.16 @ 05:32:59

Time Off Btm: 2011.03.16 @ 07:03:30

TEST COMMENT: 1st Opening 15 Minutes weak blow for 12 minutes and died
1st Shut-In 30 Minutes-No blow back
2nd Opening 15 Minutes-No blow
2nd Shut-In 30 Minutes-No blow back

PRESSURE SUMMARY



Time (Min.)	Pressure (psia)	Temp (deg F)	Annotation
0	1824.21	90.75	Initial Hydro-static
1	33.30	91.02	Open To Flow (1)
15	32.82	92.67	Shut-In(1)
47	36.24	93.68	End Shut-In(1)
48	31.72	93.71	Open To Flow (2)
63	30.59	94.48	Shut-In(2)
90	33.22	95.87	End Shut-In(2)
91	1778.23	95.96	Final Hydro-static

Recovery

Length (ft)	Description	Volume (bbl)
1.00	slightly oil cut mud	0.01

Gas Rates

Choke (inches)	Pressure (psia)	Gas Rate (Mcf/d)



DRILL STEM TEST REPORT

TOOL DIAGRAM

F.G.Holl Company L.L.C.

Bayer East #3

9431 East Central Suite 100
Wichita, Kansas 67206-2563

21-21s-14w Stafford

Job Ticket: 15779

DST#: 3

ATTN: Ryan Greenbaum

Test Start: 2011.03.16 @ 04:10:00

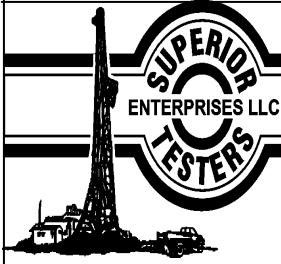
Tool Information

Drill Pipe:	Length: 3575.00 ft	Diameter: 3.80 inches	Volume: 50.15 bbl	Tool Weight: 2000.00 lb
Heavy Wt. Pipe:	Length: 0.00 ft	Diameter: 2.86 inches	Volume: 0.00 bbl	Weight set on Packer: 20000.00 lb
Drill Collar:	Length: 0.00 ft	Diameter: 2.25 inches	Volume: 0.00 bbl	Weight to Pull Loose: 45000.00 lb
			<u>Total Volume: 50.15 bbl</u>	Tool Chased 0.00 ft
Drill Pipe Above KB:	13.00 ft			String Weight: Initial 40000.00 lb
Depth to Top Packer:	3591.00 ft			Final 40000.00 lb
Depth to Bottom Packer:	ft			
Interval between Packers:	19.00 ft			
Tool Length:	48.00 ft			
Number of Packers:	2	Diameter: 6.75 inches		

Tool Comments:

Tool Description	Length (ft)	Serial No.	Position	Depth (ft)	Accum. Lengths
Change Over Sub	1.00			3563.00	
Shut-In Tool	5.00			3568.00	
Hydroic Tool	5.00			3573.00	
Jars	6.00			3579.00	
Safety Joint	2.00			3581.00	
Packer	5.00			3586.00	29.00 Bottom Of Top Packer
Packer	5.00			3591.00	
Perforations	14.00			3605.00	
Recorder	1.00	4005	Inside	3606.00	
Recorder	1.00	95172	Outside	3607.00	
Bullnose	3.00			3610.00	19.00 Bottom Packers & Anchor

Total Tool Length: 48.00



DRILL STEM TEST REPORT

FLUID SUMMARY

F.G.Holl Company L.L.C.

Bayer East #3

9431 East Central Suite 100
Wichita, Kansas 67206-2563

21-21s-14w Stafford

Job Ticket: 15779

DST#: 3

ATTN: Ryan Greenbaum

Test Start: 2011.03.16 @ 04:10:00

Mud and Cushion Information

Mud Type: Gel Chem
Mud Weight: 9.00 lb/gal
Viscosity: 64.00 sec/qt
Water Loss: 8.40 in³
Resistivity: ohm.m
Salinity: 7900.00 ppm
Filter Cake: 1.00 inches

Cushion Type:
Cushion Length: ft
Cushion Volume: bbl
Gas Cushion Type:
Gas Cushion Pressure: psia

Oil API: deg API
Water Salinity: ppm

Recovery Information

Recovery Table

Length ft	Description	Volume bbl
1.00	slightly oil cut mud	0.014

Total Length: 1.00 ft Total Volume: 0.014 bbl

Num Fluid Samples: 0

Num Gas Bombs: 0

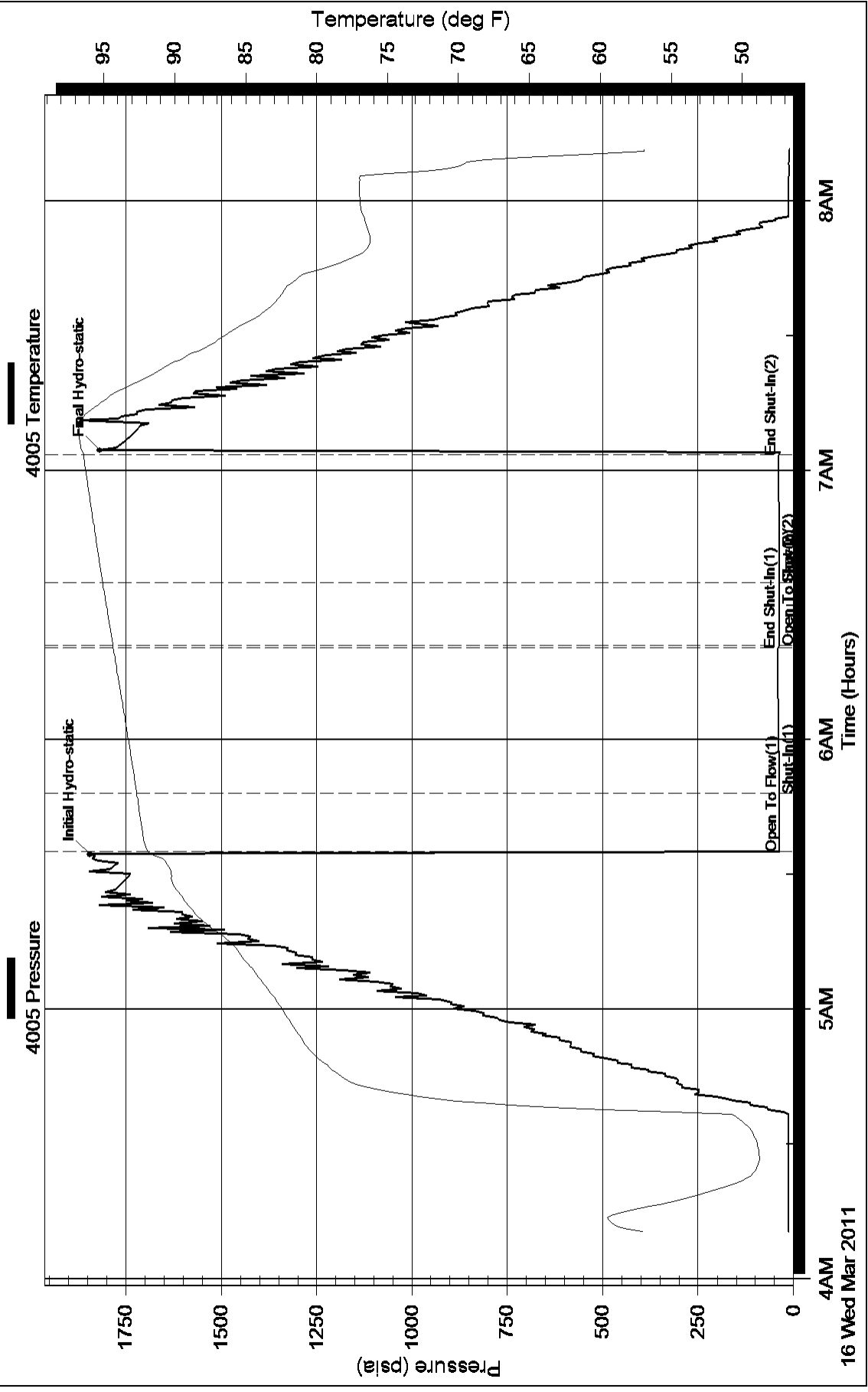
Serial #:

Laboratory Name:

Laboratory Location:

Recovery Comments:

Pressure vs. Time



Pressure vs. Time

