

JOB LOG

SWIFT Services, Inc.

DATE 17 MAR 10 PAGE NO. 1

CUSTOMER: Darrak oil WELL NO. 410 LEASE Bitter C JOB TYPE cement surface pipe TICKET NO. 20121

CHART NO.	TIME	RATE (BPM)	VOLUME (BBL) (GAL)	PUMPS		PRESSURE (PSI)		DESCRIPTION OF OPERATION AND MATERIALS
				T	C	TUBING	CASING	
								300skt SMD w/ 1/2# floccle
								8 5/8" 23" casing
								902' (22 joints) skew jet 42.85'
								Baffle plate 859'
	1200							on loc TRR 114
								pulling drill pipe
	1330							start 8 5/8" 23" casing in well
	1420							Pipe in well - hook up plug container
	1430	4 3/4	20				200	Pump 20 bbl KCL flush
	1435	4 3/4	50				250	mix cement SMD @ 11.8 ppg 100skt
		4 3/4	38				250	mix cement SMD @ 12.5 ppg 100skt
								mix cement SMD @ 14 ppg 100skt
								mix 300skt total
	1510	4 3/4					200	Release plug
		4 3/4	35				200	Displace plug
								cement to surface
	1525	4 3/4	53 1/2				200	Kick out - shot in well
								{ 300skt mixed - 35 to pit }
	1540							wash truck
	1550							job complete
								Thanks!
								Rob Dave Blaine

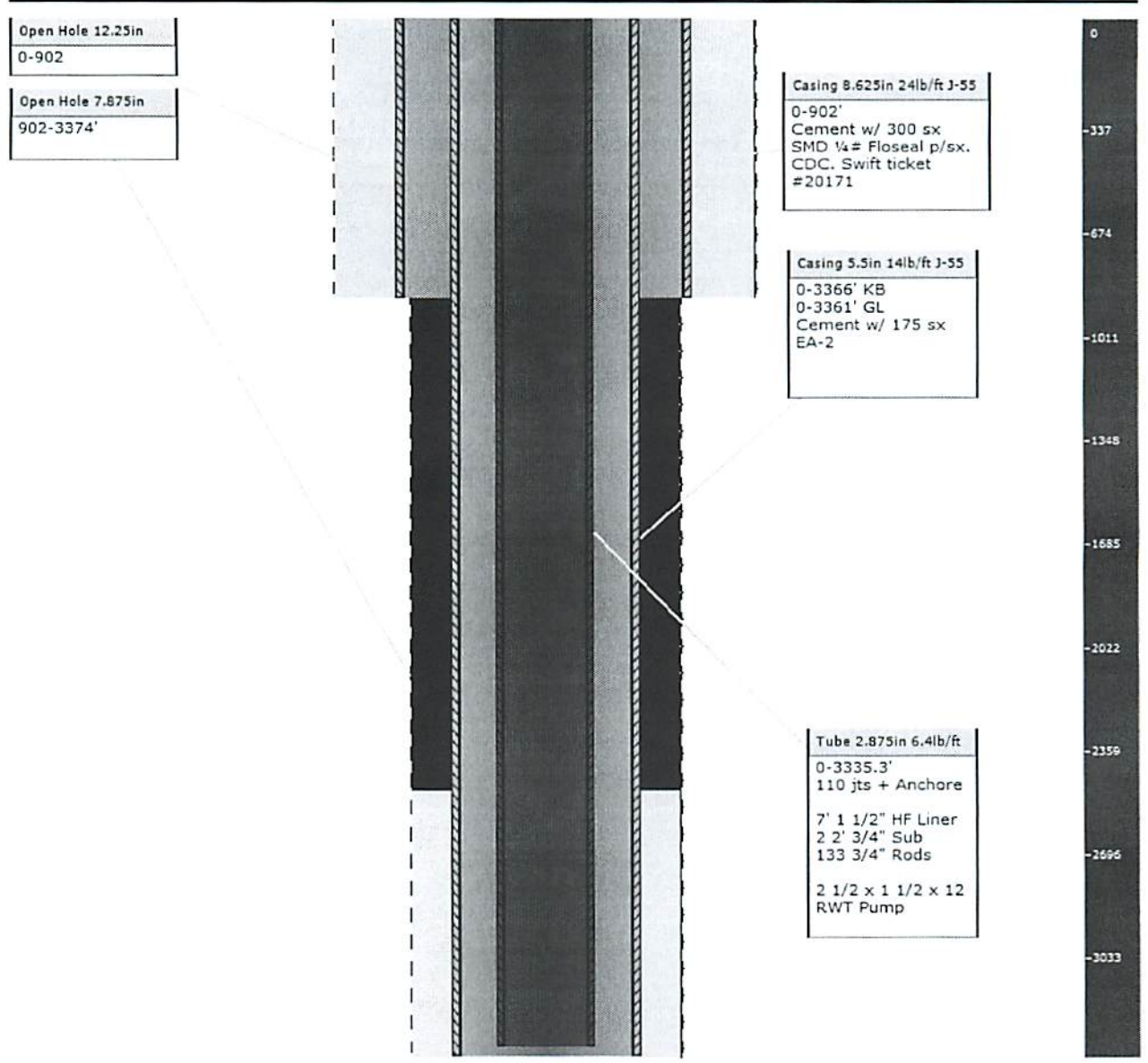
JOB LOG

SWIFT Services, Inc.

DATE 03-22-11 PAGE NO. 1

CUSTOMER JOHN DARRAH WELL NO. 10 LEASE BITTER C JOB TYPE LONG STRING TICKET NO. 19626

CHART NO.	TIME	RATE (BPM)	VOLUME (GAL)	PUMPS		PRESSURE (PSI)		DESCRIPTION OF OPERATION AND MATERIALS
				T	C	TUBING	CASING	
	0200							ON LOCATION, LAYING DOWN CMT: 175510 STD EA 2 RTO-374 SET PIPE @ 3366 CST 42.0 TUBING 3324 5 1/2 IN# CENT 1,3,5,7,9,11 BASOT 2 D500 TOWARDS BROME, WAIT ON NEW!
	0630							START CSI & FE
	0800							TAD BOTTOM DRAP PUL
	0810							BREATH CIRC
	0850		7.5					PLUG RH, 30510, 15MH
	0855	6.0	12				200	MUD FLUSH 500 GAL
		S	20				S	KCL FLUSH 276
	0905		31 1/2					EA 2 CMT DAPLUG PLUG
	0910	6.0	0				200	START D/S
		S	50 1/2				300	CMT ON BOTTOM
			75				700	
	0925	4.5	81.1				1100	LAND PLUG
	0930							Release - DRY
	1015							JOB COMPLETE THANK YOU! Dave Jost, dsj



Measured Depth - 3374 ft

Legend:

- Open Hole
- Casing

- Tubing