

Covey

The Well Watchers

Scale 1:240 (5"=100') Imperial

Well Name: SHEETZ #1
Location: Section 16 - Township 12 South - Range 32 West
Licence Number: 15-109-20,974. 0000 Region: Logan County, KS.
Spud Date: 4 February 2011 Drilling Completed:
Surface Coordinates: 1,382' FSL & 1,773' FWL
(Approximately SE SW NE SW)

Bottom Hole
Coordinates:
Ground Elevation (ft): 2,995' K.B. Elevation (ft): 3,003'
Logged Interval (ft): 3,350' To: Total Depth (ft):
Formation: Stotler -----> Miss
Type of Drilling Fluid: Chemical; Low Solids (non-dispersed)

Printed by MUD.LOG from WellSight Systems 1-800-447-1534 www.WellSight.com

OPERATOR

Company: NEW GULF OPERATING, LLC.
Address: 6310 East 102nd Street POC Geologist:
Tulsa, Oklahoma 74137 Joe Baker
(918) 728-3020

GEOLOGIST

Name: Curtis Covey
Company: COVEY - The Well Watchers
Address: 6548 Bedford Circle
Derby, Kansas 67037
Office: (316) 776 - 0367 Cell: (316) 258-9976

2011

DAILY DRILLING STATUS -- FEBRUARY

2011

	12-1/4" Hole	7-7/8" Hole	7-7/8" Hole
4 Feb	--- Spud @ 6:30pm. Drill to 272'.	5 Feb	--- WOC. 6:30am @ 272'.
5	--- Run 8-5/8" casing (23#) Set casing @ 269'. Cemented w/ 200 sx Class A (2% Gel + 3% CC). [Consolidated] Cement did circulate. Plug down @ 2:45am. WOC.		Under surface casing @ 11:30am.
		6	--- 6:30am @ 1,935'.
		7	--- 6:30am @ 2,760'.
		8	--- Displace Mud @ 3,339'. 6:30am @ 3,445'.
		9	--- 6:30am @ 4,030'. Start
		10	--- 6:30am @ 4,115'. Finish DST #1: Lansing (4,087' - 4,115').

KB: 3,003'

FORMATION TOPS

GL: 2,995'

Formation	Rotary Sample Depth (Datum)	E-log Depth (Datum)
AnHydrite	2,517' (+486)' *	
B / AnHydrite	2,540' (+463)' *	
Stotler	3,620' (-617')	
Topeka	3,851' (-748')	
Heebner Shale	3,963' (-960')	
Toronto	3,996' (-993')	
Lansing	4,003' (-1,000')	
Muncie Creek SH		
Stark SH		
B / KC		
Pawnee LS		
Ft. Scott		
Cherokee Sh		
Lower Cherokee Sh		
'Johnson' Zone		
Morrow Shale		
Miss (Erosional)		

* Contractor

RTD: LTD: ATD: E-log is to rotary sample depth, uphole. E-log is to rotary sample depth, mid- & down hole. Loggers: Schlumberger Elk City, Oklahoma

HOLE DEVIATION (272' - ')

DEPTH / TVD	--- INCLINATION	AZIMUTH	NORTH	SOUTH	EAST	WEST	DOGLEG deg/100'
272' /	--- 0.75 (Surface)						
1,291' /	--- 1.00						
2,234' /	--- 1.00						
3,110' /	--- 1.00						
4,115' /	--- (DST #1)						

CONTRACTOR**VAL Energy --- Rig #4**

10,500 E. Berkeley Square Parkway, Suite 1000
Wichita, Kansas 67230
Office: (316) 636-2090

Rig #4 - (620) 617-2793

Larry Hinderliter - (620) 804-0097

Pump: National K-500A
6" x 15" @ 58 SPM.
1,000 PSI @ Standpipe.

Uphole Hole:
WOB 35M @ 80 RPM.

After Mudup / Main Hole:
WOB 40M @ 70 RPM.

Drill Collars: 6-1/8" x 2.50" --- 469'. (83.5#/ft)
Dry Collar Weight: 39,162#
(@ 9.5 ppg / Buoyancy Factor 0.8545)
Buoyancy Collar Weight: 33,464#
Design Factor: 15%, therefore:
available WOB is 28,444#
Drill Pipe: 4-1/2"XH. (16#/ft - used)

BIT RECORD

DATE	SIZE	TYPE	JET SIZE	DEPTH IN / OUT	CUM. FT.	HOURS	ROP
4 Feb 2011	12-1/4"	REED RR	3 / 15's	0' / 272'	272'	2.50	108.8
5 Feb 2001	7-7/8"	JZ QX-21	13 - 14 - 13	272' /			

ROCK TYPES

POROSITY

- Earthy
- Fenest
- Fracture
- Inter
- Moldic
- Organic
- Pinpoint
- Vuggy

LITHOLOGY

- Anhy
- Bent
- Brec
- Cht
- Clyst
- Coal
- Granite wash
- Congl
- Dol lmst
- Silty dol

- Calc dol
- Dol 2
- Dol
- Gyp
- Igne
- Lmst 2
- Lmst
- Meta
- Mrlst
- Salt
- Shale 3
- Shale 3
- Shale
- Shcol
- Shgy
- Sltst
- Ss
- Till
- Ss 2

MINERAL

- Mica
- Anhy
- Arggrn
- Arg
- Bent
- Bit
- Breccfrag
- Calc
- Carb
- Chtdk
- Chtlt
- Dol
- Feldspar
- Ferrpel
- Ferr
- Glau
- Gyp
- Hvymin
- Kaol
- Marl

- Mica
- Anhy
- Arggrn
- Arg
- Bent
- Bit
- Breccfrag
- Calc
- Carb
- Chtdk
- Chtlt
- Dol
- Feldspar
- Ferrpel
- Ferr
- Glau
- Gyp
- Hvymin
- Kaol
- Marl

STRINGER

- Calc dol
- Silty dol
- Anhy

- Minxl
- Nodule
- Phos
- Pyr
- Salt
- Sandy
- Silt
- Sil
- Sulphur
- Tuff
- Copper
- Ooliticastic
- Ooloid
- Oolite
- Sucrosic
- Dark specks

- Arg
- Bent
- Coal
- Dol
- Gyp
- Ls
- Mrst
- Calc dol
- Sltstgr
- Ssstrg
- Chalk
- New symbol

SHOW

- Oil
- Spotted
- Ques
- Dead
- Gas
- Oil/gas
- Bed contact

ACCESSORIES

FOSSIL

- Algae
- Amph
- Belm
- Bioclst
- Brach
- Bryozoa
- Cephal
- Coral
- Spore
- Crin
- Echin
- Fish
- Foram
- Fossil
- Gastro

- Oolite
- Ostra
- Pelec
- Pellet
- Pisolite
- Plant
- Strom

MINERAL

- Mica
- Anhy
- Arggrn
- Arg
- Bent
- Bit
- Breccfrag

- Calc
- Carb
- Chtdk
- Chtlt
- Dol
- Feldspar
- Ferrpel
- Ferr
- Glau
- Gyp
- Hvymin
- Kaol
- Marl
- Minxl
- Nodule
- Phos

- Pyr
- Salt
- Sandy
- Silt
- Sil
- Sulphur
- Tuff
- Copper
- Ooliticastic
- Ooloid
- Oolite
- Sucrosic
- Dark specks

STRINGER

- Calc dol

- Silty dol
- Anhy
- Arg
- Bent
- Coal
- Dol
- Gyp
- Ls
- Mrst
- Calc dol
- Sltstgr
- Ssstrg
- Chalk
- New symbol

OTHER SYMBOLS

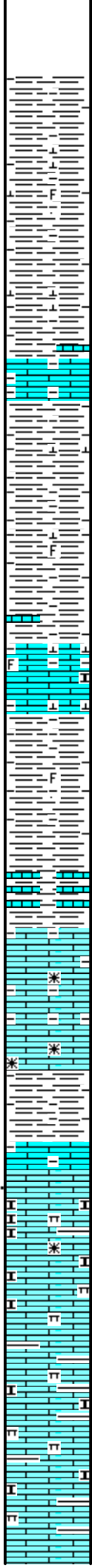
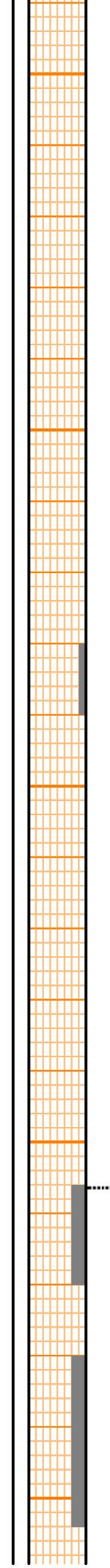
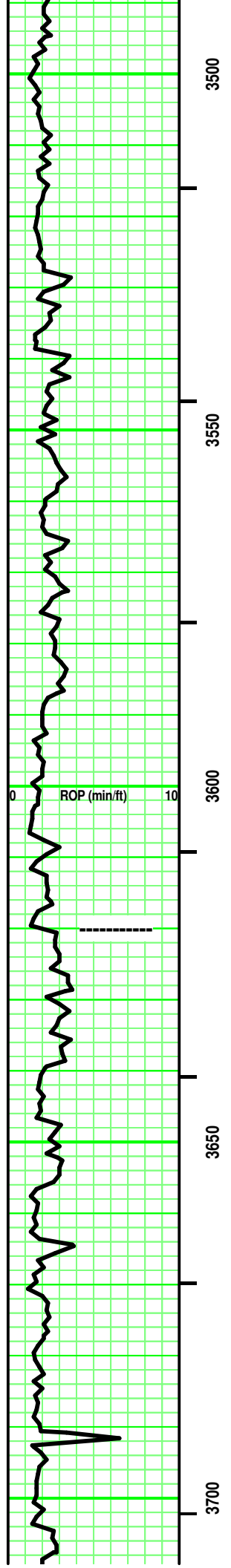
ACTIVITY

- Lost circluation
- Circulate for same

- Circulate for same
- Rtd
- Trip

- Connection
- Rft

- Sidewall



Interbedded SH & LS
 SH - Lt/ Med Gray. tr Tannish Gray to Brownish Gray. some limy streaks. some calc in part. rare fossil frag. soft.

LS - Tan/ tr to some Pale to Lt Gray. Sing. XF-/ Micro-xln. xln por. tr argil in part. rare fossil frag. partly Firm. No/ tr vis por.

Interbedded SH & LS
 SH - Lt/ Med Gray. tr Tannish Gray to Brownish Gray. some limy streaks. some calc in part. rare fossil frag. soft.

LS - Tan/ tr to some Pale to Lt Gray. Sing. XF-/ Micro-xln. xln por. tr subchalky in part. tr argil in part. rare fossil frag. partly Firm. No/ tr vis por.

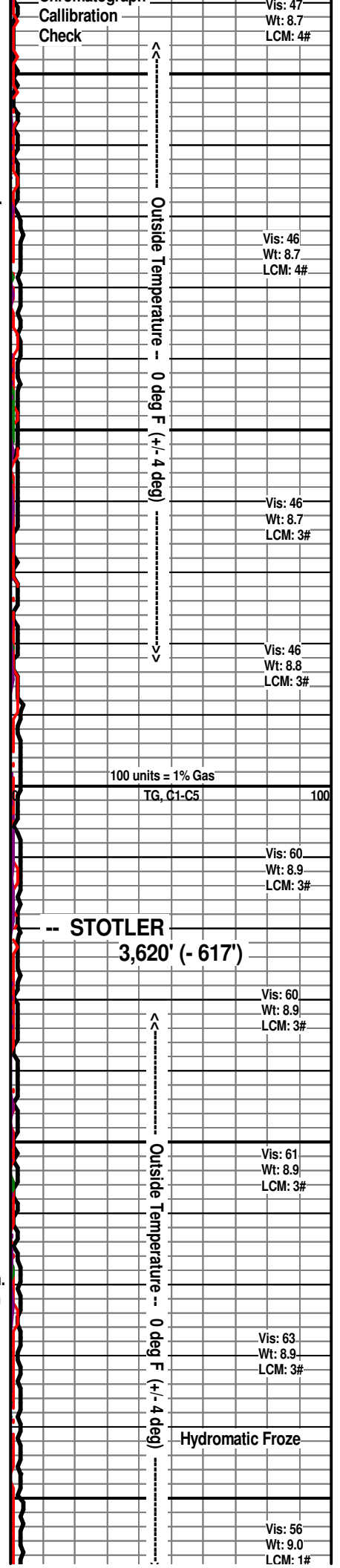
LS (1) - Tans/ tr Off White. some Lt Gray in part. Sing/ tr Mot. tr VF/ mostly XF-xln & Micro-xln. xln por. tr Re-xln. some interbedded argil/shale (Grays). mostly Firm. No/ tr vis por.

SH - Med Gray. Sing. soft. tr blocky.

LS - similiar to (1) above.

Interbedded SH & LS
 SH - Lt/ Med Gray. tr Tannish Gray. some limy streaks. some calc in part. soft.

LS - Tans / tr Pale to Lt Gray. Sing. XF-/ Micro-xln. xln por. rare Re-xln. tr argil in part. subchalky in part. tr marly in part. No/ tr vis por.



Calibration
 Check

Vis: 47
 Wt: 8.7
 LCM: 4#

Outside Temperature -- 0 deg F (+/- 4 deg)

Vis: 46
 Wt: 8.7
 LCM: 4#

Vis: 46
 Wt: 8.7
 LCM: 3#

Vis: 46
 Wt: 8.8
 LCM: 3#

100 units = 1% Gas

TG, C1-C5

100

Vis: 60
 Wt: 8.9
 LCM: 3#

-- STOTLER
3,620' (- 617')

Vis: 60
 Wt: 8.9
 LCM: 3#

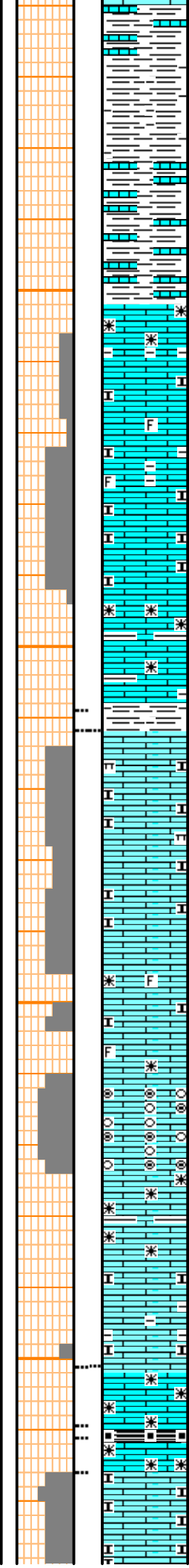
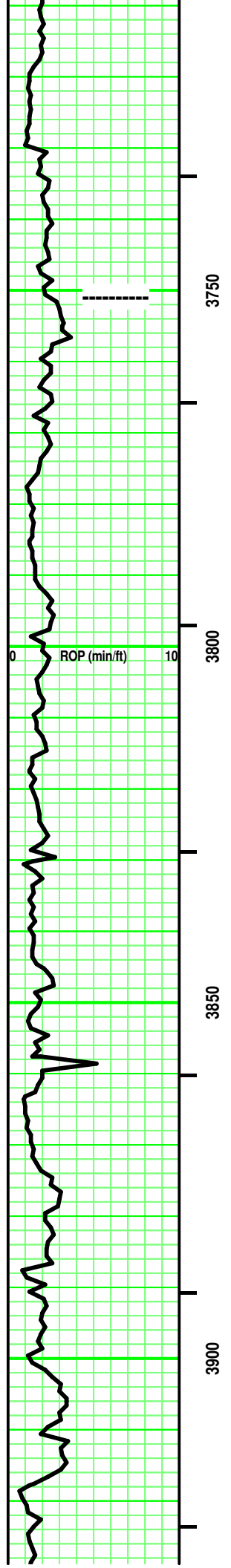
Outside Temperature -- 0 deg F (+/- 4 deg)

Vis: 61
 Wt: 8.9
 LCM: 3#

Vis: 63
 Wt: 8.9
 LCM: 3#

Hydromatic Froze

Vis: 56
 Wt: 9.0
 LCM: 1#



SH - Lt/ Med Gray. Sing. highly limy (Tannish Gray) to LS stringers (Tan, Micro-xln).

LS - Grays/ Tans. Sing/ somt to mostly Mot. XF-/ mostly Micro-xln. xln por. some subchalky. tr fossil frags. some intermixed/ interbedded argil or shale (Med/Dark Gray). Firm. No/ tr vis por.

SH - Med Gray. Sing. Firm.

Intermixed & Interbedded:
 LS - Lt/ rare to some Med Gray, Tans. tr Tannish Pale Gray. some Sing/ mostly Mot. VF-/ XF-/ Micro-xln. xln por. some subchalky/ marly. argil/shaly. rare fossil frags. partly Firm. No/ tr/ rare Fair vis por.

LS - Lt/ Med Tan. Sing. XF-/ Micro-xln. xln por. some Re-xln. some argil/shaly in part. Firm. No/ tr vis por.

SH - Grays. Sing. tr calc to limy in part. some Firm. Blocky.

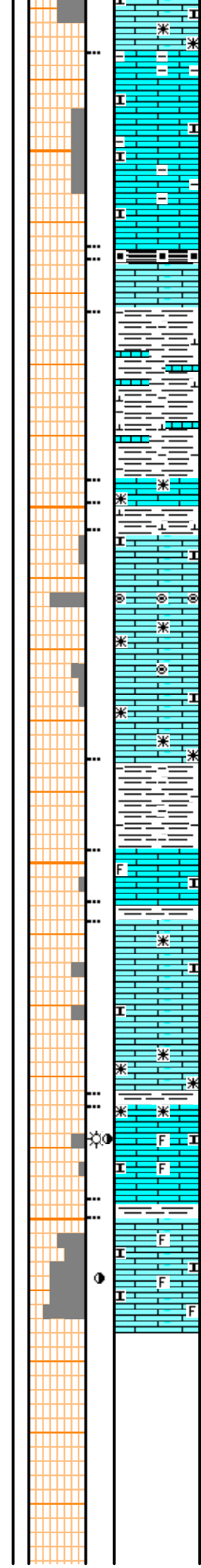
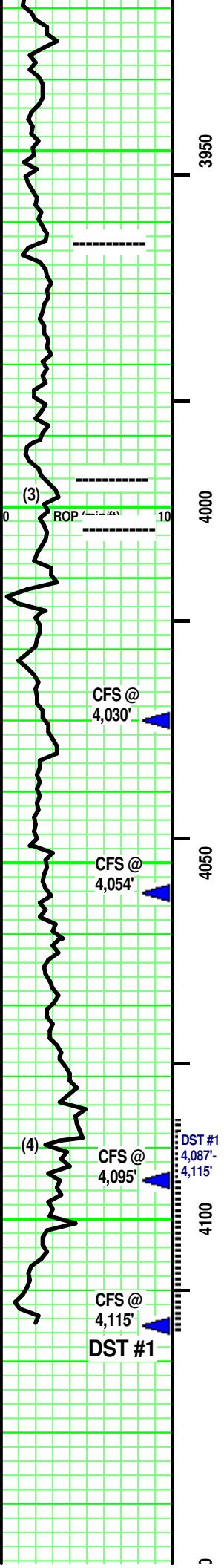
Add: VF Oolites/ Oolcasts. Clear/ Lt Tan, semitransparent Matrix.

LS (2) - Tan. Sing. Micro-xln. xln por. tr Re-xln. Firm. No/ tr vis por.

SH - Black. Sing. Carb. Soft.
 LS - similar to (2) above.

LS - Lt/ Med Gray, Tans. Sing/ Mot. XF-/ Micro-xln. xln por. some Re-xln. subchalky in part. argil/shaly. some interbedded Re-xln. partly Firm. No/ tr/ rare Fair vis por. Dense at top/depth

	Vis: 56	Wt: 9.0	LCM: 1#
-- TOPEKA			
3,751' (- 748')			
	Vis: 56	Wt: 9.0	LCM: 1#
	Vis: 56	Wt: 9.1	LCM: 1#
100 units = 1% Gas			
TG, C1-C5			100
	Vis: 59	Wt: 9.0	LCM: 1#
	Vis: 60	Wt: 9.1	LCM: 1#
	Vis: 50	Wt: 9.1	LCM: 1#
	Vis: 50	Wt: 9.1	LCM: 1#
	Vis: 59	Wt: 9.1	LCM: 1#
	Vis: 60	Wt: 9.1	LCM: 1#



LS - Tans/ some Pale Lt Gray, tr Off White. Sing/Mot. Micro-xln. xln & some part por. Subchalky. some fossil frags. some argil. Friable. Tr/ Fair vis por.

Vis: 50
Wt: 9.1
LCM: 1#

SH - Black. Sing. Carb. Soft.
LS - Lt Gray. Sing. Micro-xln. xln por. No/ tr vis por.

HEEBNER SH
3,963' (-960')

Vis: 50
Wt: 9.1
LCM: 1#

SH - Med Gray. Sing. Calc/ LS stringers. . Firm. Massive.

LS (3) - Off White/ Tan. Sing/ tr Mot. Micro-xln. xln & tr Vuggy por. mostly Firm. No/ tr vis por.

Vis: 50
Wt: 9.1
LCM: 1#

LS (3) -
SH - Lt Gray. Sing. calc.

TORONTO
3,996' (-993')

TG, C1-C5 100

LS - Off White/ Tan. Sing/ tr Mot. Micro-xln. xln & tr Vuggy por. [some VF Oolites in part, Off White. Clear/ Pale Tan, semitransparent Matrix. Friable. Tr vis por.] some Re-xln. rare subchalky in part. mostly Firm. No/ tr vis por.

LANSING
4,003' (-1,000')

Vis: 52
Wt: 9.1
LCM: 1#

CFS @ 4,030'

CFS @ 4,030': 50"

SH - Med Gray. Sing. Massive. soft.

4,047' -
Vis: 52 Wt: 9.2
Wtr Loss: 8.8
PV: 13 YP: 17
Gels: 9/20
pH: 10.0 LCM: 2#
Cl (2,200) Ca (80)
Solids: 6.1%

CFS @ 4,054'

CFS @ 4,054': 50"

LS - Lt & Med Tan. Sing/ Mot. XF-/ Micro-xln. xln & tr part por. rare Fossil frags. subchalky in part. partly Friable. No/ tr vis por.

SH - Med Gray. Sing. Massive. soft.

LS - Tans/ tr Off White. Sing/ tr Mot. XF-/ Micro-xln. xln por. tr Re-xln at depth. subchalky in part. partly Friable. No/ tr vis por.

Vis: 50
Wt: 9.1
LCM: 2#

SH - Med/ Dark Gray. Sing. Massive. soft.

LS (4) - Lt & Med Tan. Sing/ Mot. XF-/ Micro-xln. xln & particle por. tr Re-xln. rare subchalky in part. Firm. No/ tr vis por. No odor. Spotted high yellow

LS (4) - fluorescence. On own, tr minute gas bubbles. No free oil. spotted Lt/Med Brown, irregular stain. V Weak cut/ residual. Weak acid/residual

HW: 6u/ 3u (Bk)

CFS @ 4,095'

CFS @ 4,095': 50"

SH - Lt Gray. Sing. calc. firm.

LS - Tan/ Tannish Off White. Sing. Micro-xln. Chalky. fossil frags in part. Friable. No/ tr vis por. ? odor. Spotted, dull yellow fluorescence. No free oil or gas. Spotted, irregular Med Brown stain. No/ V Weak pos cut. No/ V Weak pos acid/ residual. Transparent Oil blebs on wash water

CFS @ 4,115':50" & DST #1

CFS @ 4,115'

DST #1

S/T: 15 stands pulling tite. 16th is tite & hanging. Jeted/added Mud. Cont'd T/O until free.

CHC: 60"
Work Kelly (15") slowly. No shake. Ck sample box for Volume/Type of fill. Hole Dev: deg @ 4,115'. Board: Strap:

