

# GEOLOGICAL REPORT

Voigt Oil & Gas Co., Inc.

J.D. Karber #3

SW SW Section 28-T16S-R1W

Saline County, Kansas

COMMENCED: 12-23-10

STATUS: Oil

COMPLETED: 12-30-10

A.P.I. #: 15-169-20322

CONTRACTOR: C & G Drilling, Inc.

OPERATOR LIC.: 5057

SIZE OF HOLE: 7 7/8"

FIELD: Gypsum Creek

SURFACE PIPE: 8 5/8"

ELEVATION: 1278 K.B.

CEMENTED WITH: N/A

LOGS: None

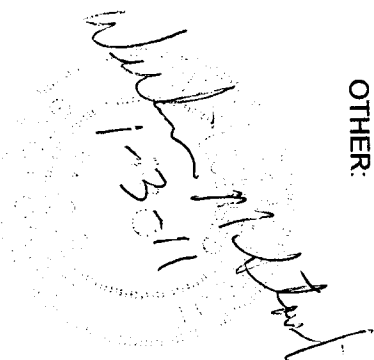
LONG STRING: 5 1/2"

MUD SYSTEM: Chemical

CEMENTED WITH: N/A

OTHER:

R.T.D.: 2655'



William M. Stout  
Geologist

## FORMATION TOPS

1269 G.L.    1278 K.B.

	<u>Sample</u>
Lansing Kansas City	1995 -717
Base Kansas City	2324 -1046
Erosional Mississippi	2600 -1322
Mississippi Porosity	2611 -1333
Total Depth	2655 -13777

## SAMPLE SHOW DESCRIPTIONS

Lansing Kansas City 1995' (-717)

2013' - 2017'

Limestone - light brown, light gray, fine crystalline, fossiliferous, some oolitic, faint odor, scattered light stain, no show free oil, trace fluorescence, Intercrystalline porosity.

2205' - 2210'

Limestone - brown, gray, fine crystalline, fossiliferous, dense, no odor, trace dark stain, no show free oil, scattered vugular porosity, scattered fluorescence.

fluorescence.

Erosional Mississippi 2600' (-1322)

2600' - 2610'

Conglomerate - chert, white, opaque, weathered, with dolomite, light brown, brown, fine to coarse crystalline, some sucrosic, friable in part, fair odor, dark brown stain, show free oil with gas bubbles, scattered fluorescence, some vugular and intercrystalline porosity. Abundant varicolored shale.

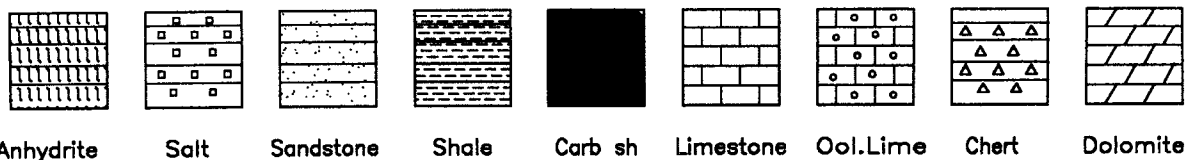
2613' - 2620'

Dolomite - brown, fine crystalline, sucrosic, friable, slightly glauconitic, good odor, even brown stain, good show free oil with gas bubbles, good fluorescence, intercrystalline porosity with a few vugs.

CONCLUSIONS

The decision was made to run 5 1/2" casing to further evaluate the Mississippian through perforations.

LEGEND



DRILLING TIME IN MINUTES  
PER FOOT  
Rate of Penetration Decreases

5"    10"    15"    20"    25"

DEPTH

LITHOLOGY

SAMPLE DESCRIPTIONS

OIL SHOWS

REMARKS

1950

SH-G, DK G, BAN.

SH-A.A.

2000

LS-Lt. Ben. Lt. G. F-X. Fos. SCL. DMS. N.S. NU

LS-Lt. Ben. Lt. G. F-X. Fos. S/DOL. FL. ODR. SCAT. LF. 377 NSFU. GR. FLUID IX

LS-Lt. Ben. Lt. G. F-X. Fos. DMS. N.S. NU

1269 GL  
1278 KB

TRIP BIT @ 19.

LANSING  
1995 (-717,



NUB

SH-DK 67 BK GRN,

LS-21 BEN 67 FX FEW  
POS. DNS. NS NUB

LS-BEN 67 FX, POS. ARG DNS.  
N.S. NUB

2300

LS-LI 67 WH FX DNS LAKY  
NS. NUB W/FE. SN-BLK CARD

LS-A.A.

LS-16 BEN 67 FX FEW POS. DNS.  
N.S. NUB

LS-AN. W/FE. BLK CARD SA

SH 67 BK 67 GRN. W/FE 67 FX  
DNS. NS. NUB

50

LS-BK BEN DK 67 FX DNS.  
A.E. NS. NUB

SH 67 GRN. W/FE AN,

LS-16 BEN 67 FX DKY  
DNS. NS. W/SH 67 GRN

LS-AN. W/FE AN.

2400

SH 67 GRN. W/FE. LI 67 FX  
CARD. HJ. MICH NS. NUB

LS-A. BEN. BEN. FX DNS. NS.  
NUB. W/SH 67 GRN.

LS-AN. W/FE AN.

50

LS-BRN. FX DNS, POS. DNS. NS.  
NUB W/SH 67 GRN.

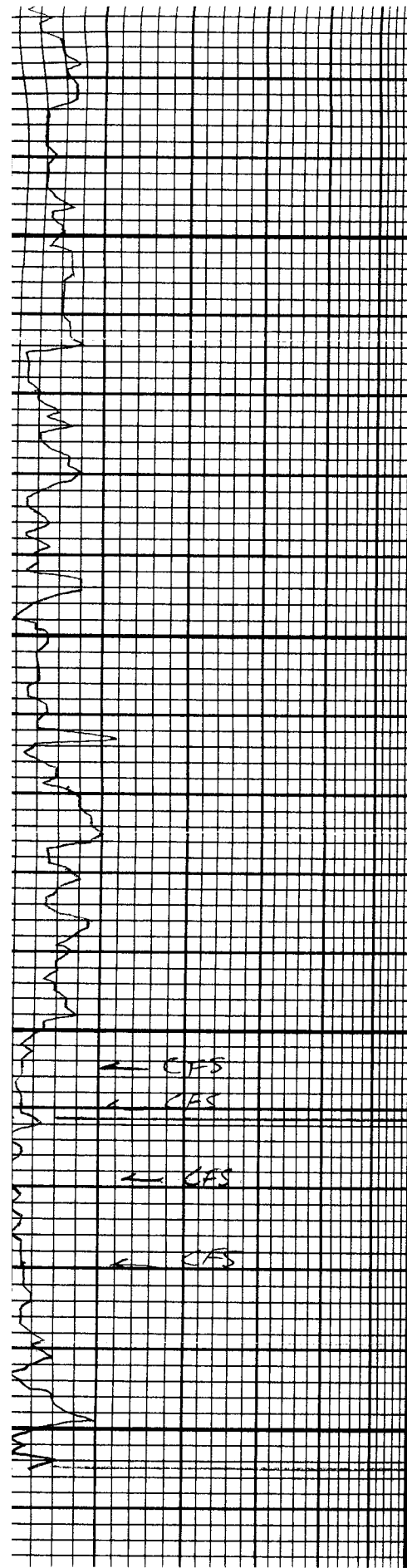
LS-LI 67 GRN. FX. POS. DNS  
ARG NS. NUB

LS-BRN. FX. POS. DNS. NS.  
NUB W/SH 67 GRN

LS-AN. W/FE STP BLK.

LS-LI. BRN BRN. FX. POS.  
DNS. NS. NUB W/SH 67.

BKC.  
2324 (-1046)



2500

50

2600

50

LS. RR. W/CRST BLE.
LS. LI. BRN BRN. F. A. FOL. DMS. NS. NUB W/S/SY.
LS. AA. W/SY BY GEN.
LS. LI. BRN. BRN. GY F. A. FOL. DMS. NS. NUB
LS. AA.
SUB BY GEN. W/LS. AA.
LS. AA. W/SY. BY GEN. AMB.
LS. LI. GY. H. BRN. BRN. F. X. DMS. NS. NUB W/SY. V. AIR COR.
LS. ? SYN. AA.
SUB BY GEN. RED AMB. GAC. W/LS. AA.
SN. AA. W/LS. AA.
SS. GEN. WHL. F. G. BEPP. ARG. FOL. BRN. F. X. PASS. FL. DMS. DMS. NS. W/SY. GY. BRN. RAD. ZNF. WHL. OF R. W. R. DOLITE. SOL. LE. AD. H. L. STN. S. F. C. W/LS. B. F. A. V. U. G. F. F. F. U. L. O. Z. O. O. DOL. LI. G. F. F. C. O. X. S. I. S. U. C. F. R. I. A. M. K. W. E. I. N. F. R. O. O. R. B. E. N. S. T. N. S. F. O. N/GR. SENT. FL. O. R. P. P. I. E. N. S. W. R. O. U. N. D. S. N. I. S. A. A.
DOL. BRN. F. X. SUC. F. R. I. A. G. U. V. U. G. O. P. P. E. N. S. T. N. S. F. O. G. U. I. E. T. F. A. V. U. G. F. F. F. U. L. O. Z. O. O.
DOL. LI. BRN. F. X. SUC. F. R. I. A. M. K. K. I. S. C. X. W/LS. W. H. I. L. E. F. I. D. F. R. A. N. S. - O. P. P. F. R. E. S. H.
30. W. DOL. AA. F. I. O. P. O. R. W/LS. NUB S. I. S. G. U. I. E. T.
DOL. BRN. F. X. SUC. S/FR. I. NS. X. P. S/CH. A. P.
DOL. AA. W/LS. G. F. E. N. Y. D. R. C. I. N. S. NS. NUB

CFS  
ZFS  
CFS  
CFS

EROSIONAL MISS  
2600 (-1322)  
CFS @ 2605'  
CFS @ 2610'  
CFS @ 2619'  
CFS @ 2630'  
MISSISSIPPI  
2611 (-1333)  
R.T.D.  
2655 (-1377)