



WELL COMPLETION FORM
WELL HISTORY - DESCRIPTION OF WELL & LEASE

OPERATOR: License # _____

Name: _____

Address 1: _____

Address 2: _____

City: _____ State: _____ Zip: _____ + _____

Contact Person: _____

Phone: (_____) _____

CONTRACTOR: License # _____

Name: _____

Wellsite Geologist: _____

Purchaser: _____

Designate Type of Completion:

- New Well Re-Entry Workover
- Oil WSW SWD SIOW
- Gas D&A ENHR SIGW
- OG GSW Temp. Abd.
- CM (Coal Bed Methane)
- Cathodic Other (Core, Expl., etc.): _____

If Workover/Re-entry: Old Well Info as follows:

Operator: _____

Well Name: _____

Original Comp. Date: _____ Original Total Depth: _____

- Deepening Re-perf. Conv. to ENHR Conv. to SWD
- Conv. to GSW
- Plug Back: _____ Plug Back Total Depth _____
- Commingled Permit #: _____
- Dual Completion Permit #: _____
- SWD Permit #: _____
- ENHR Permit #: _____
- GSW Permit #: _____

Spud Date or Recompletion Date Date Reached TD Completion Date or Recompletion Date

API No. 15 - _____

Spot Description: _____

_____ - _____ - _____ Sec. _____ Twp. _____ S. R. _____ East West

_____ Feet from North / South Line of Section

_____ Feet from East / West Line of Section

Footages Calculated from Nearest Outside Section Corner:

- NE NW SE SW

County: _____

Lease Name: _____ Well #: _____

Field Name: _____

Producing Formation: _____

Elevation: Ground: _____ Kelly Bushing: _____

Total Depth: _____ Plug Back Total Depth: _____

Amount of Surface Pipe Set and Cemented at: _____ Feet

Multiple Stage Cementing Collar Used? Yes No

If yes, show depth set: _____ Feet

If Alternate II completion, cement circulated from: _____

feet depth to: _____ w/ _____ sx cmt.

Drilling Fluid Management Plan

(Data must be collected from the Reserve Pit)

Chloride content: _____ ppm Fluid volume: _____ bbls

Dewatering method used: _____

Location of fluid disposal if hauled offsite: _____

Operator Name: _____

Lease Name: _____ License #: _____

Quarter _____ Sec. _____ Twp. _____ S. R. _____ East West

County: _____ Permit #: _____

AFFIDAVIT

I am the affiant and I hereby certify that all requirements of the statutes, rules and regulations promulgated to regulate the oil and gas industry have been fully complied with and the statements herein are complete and correct to the best of my knowledge.

Submitted Electronically

KCC Office Use ONLY

- Letter of Confidentiality Received
Date: _____
- Confidential Release Date: _____
- Wireline Log Received
- Geologist Report Received
- UIC Distribution
- ALT I II III Approved by: _____ Date: _____



1055239

Operator Name: _____ Lease Name: _____ Well #: _____

Sec. _____ Twp. _____ S. R. _____ East West County: _____

INSTRUCTIONS: Show important tops and base of formations penetrated. Detail all cores. Report all final copies of drill stems tests giving interval tested, time tool open and closed, flowing and shut-in pressures, whether shut-in pressure reached static level, hydrostatic pressures, bottom hole temperature, fluid recovery, and flow rates if gas to surface test, along with final chart(s). Attach extra sheet if more space is needed. Attach complete copy of all Electric Wire-line Logs surveyed. Attach final geological well site report.

Drill Stem Tests Taken <input type="checkbox"/> Yes <input type="checkbox"/> No <i>(Attach Additional Sheets)</i> Samples Sent to Geological Survey <input type="checkbox"/> Yes <input type="checkbox"/> No Cores Taken <input type="checkbox"/> Yes <input type="checkbox"/> No Electric Log Run <input type="checkbox"/> Yes <input type="checkbox"/> No Electric Log Submitted Electronically <input type="checkbox"/> Yes <input type="checkbox"/> No <i>(If no, Submit Copy)</i> List All E. Logs Run:	<input type="checkbox"/> Log Formation (Top), Depth and Datum <input type="checkbox"/> Sample Name Top Datum
---	---

CASING RECORD <input type="checkbox"/> New <input type="checkbox"/> Used							
Report all strings set-conductor, surface, intermediate, production, etc.							
Purpose of String	Size Hole Drilled	Size Casing Set (In O.D.)	Weight Lbs. / Ft.	Setting Depth	Type of Cement	# Sacks Used	Type and Percent Additives

ADDITIONAL CEMENTING / SQUEEZE RECORD				
Purpose:	Depth Top Bottom	Type of Cement	# Sacks Used	Type and Percent Additives
_____ Perforate _____ Protect Casing _____ Plug Back TD _____ Plug Off Zone				

Shots Per Foot	PERFORATION RECORD - Bridge Plugs Set/Type Specify Footage of Each Interval Perforated	Acid, Fracture, Shot, Cement Squeeze Record <i>(Amount and Kind of Material Used)</i>	Depth

TUBING RECORD: Size: _____ Set At: _____ Packer At: _____ Liner Run: Yes No

Date of First, Resumed Production, SWD or ENHR. _____ Producing Method: Flowing Pumping Gas Lift Other *(Explain)* _____

Estimated Production Per 24 Hours	Oil Bbls.	Gas Mcf	Water Bbls.	Gas-Oil Ratio	Gravity
-----------------------------------	-----------	---------	-------------	---------------	---------

DISPOSITION OF GAS: <input type="checkbox"/> Vented <input type="checkbox"/> Sold <input type="checkbox"/> Used on Lease <i>(If vented, Submit ACO-18.)</i>	METHOD OF COMPLETION: <input type="checkbox"/> Open Hole <input type="checkbox"/> Perf. <input type="checkbox"/> Dually Comp. <input type="checkbox"/> Commingled <i>(Submit ACO-5)</i> <input type="checkbox"/> Other <i>(Specify)</i> _____ <i>(Submit ACO-4)</i>	PRODUCTION INTERVAL: _____ _____
--	---	---

LITHOLOGY STRIP LOG

WellSight Systems

Scale 1:240 (5"=100') Imperial

Well Name: #1-32 Heft
Location: 990' FSL & 1642' FWL, Sec. 32-T27S-R18W, Kiowa Co., KS.
Licence Number: 15-097-21685-0000 Region: Einsel Field
Spud Date: 3/7/2011 Drilling Completed: 3/16/2011
Surface Coordinates: 990' FSL & 1642' FWL, Sec. 32-T27S-R18W

Bottom Hole Same as above
Coordinates:
Ground Elevation (ft): 2222' K.B. Elevation (ft): 2231'
Logged Interval (ft): 3400' To: 4826' Total Depth (ft): 4826'
Formation: Kinderhook at Total Depth
Type of Drilling Fluid: Freshwater/Gel to 3306'; Chemical Gel 3306' to TD.

Printed by MUD.LOG from WellSight Systems 1-800-447-1534 www.WellSight.com

OPERATOR

Company: Strata Exploration, Inc.
Address: P.O. Box 401
Fairfield, IL. 62837-0401

GEOLOGIST

Name: Jon D. Christensen
Company: Consulting Petroleum Geologist
Address: 9002 W. Silver Hollow St.
Wichita, KS. 67205-8856

Cores

None Taken

DSTs

DST #1(Lansing 'A') 4219' - 4236' Test Times 15"-45"-45"-90" IFP Strong Blow BOB/10 Sec., FFP Fair Blow slowly built to BOB/45", no Gas to Surface; REC: 615' Gas in Pipe, 20' SGCM(3%G, 97%M), no oil or water; IFP 13-23#, ISIP 217#, FFP 16-32#, FSIP 191#, IHP 2095#, FHP 2070#, BHT 109 Deg. F.

DST #2(Kansas City 'I') 4417' - 4435' Test Times 15"-45"-45"-90" IFP Strong Blow BOB/1.5 Min., Gas to Surface in 15"; FFP GTS throughout, Gauged 43.0 MCFGPD/45" of FFP; Strong BOB Blowback on both SI's; REC: 515' Total Fluid: 215' CGO(35%G, 65%O), 190' GM&WCO(41%G, 36%O, 18%W, 5%M), 60' GM&WCO(55%G, 28%O, 8%W, 9%M), 50' MSW(96%W, 4%M) CI 59,000, Mud 3000; Oil 42 Deg. API(Green color); IFP 52-69#, ISIP 1309#, FFP 72-190#, FSIP 1290#, IHP 2161#, FHP 2097#, BHT 117 Deg. F.

DST #3(Mississippi Chert) 4786' - 4818' Test Times 15"-45"-60"-120" IFP Strong Blow BOB/4 Min., FFP GTS throughout, Gauged Max. 340 MCFGPD; Strong BOB Blowback on both SI's; REC: 80' Drlg. Mud, 65' SOCM(2%O, 98%M), no Water; IFP 85-82#, ISIP 1465#, FFP 82-92#, FSIP 1463#, IHP 2384#, FHP 2354#, BHT 117 Deg. F.

Comments

3/7/11 MIRU Sterling Drilling Co. Rig #4, Spud at 1:30 PM.; 3/8/11 TD. 525' - WOC; 3/9/11 Drilling at 1740'; 3/10/11 Drilling at 2820'; 3/11/11 Drilling at 3450'; 3/12/11 Drilling at 4070'; 3/13/11 TD. 4236' - TOH w/DST #1; 3/14/11 TD. 4435' - TIH for DST #2; 3/15/11 Drilling at 4635'; 3/16/11 TD. 4818' - TOH for DST #3; 3/17/11 RTD. 4826' - LTD. 4826' - CCH to LDDP to run 5 1/2" Production Casing.

Set 8 5/8"(23#) Surface Casing at 522' w/400 sx/(Basic Energy Services). Cement Did Circulate. PD. 3:15 AM. 3/8/11.

Surveys: 0.5 Degree at 525'(Surface Casing); 0.5 Deg. at 4236'(DST #1); 0.75 Deg. at 4435'(DST #2); 0.5 Deg. at 4818'(DST #3).

Pipe Strap at 4236'(DST #1): Strap 0.43' Long to the Board, no correction made to the Board.

After review of the Halliburton LOGS, DST's, structural position and positive shows of commercial amounts of hydrocarbons, the operator elected to set new 5 1/2"(15.5#) Production casing for completion in the Miss. Chert and Kansas City 'I' zones.

LOG TOPS:

ROCK TYPES

	Anhy		Clyst		Gyp		Mrlst		Shgy
	Bent		Coal		Igne		Salt		Sltst
	Brec		Congl		Lmst		Shale		Ss
	Cht		Dol		Meta		Shcol		Till

ACCESSORIES

MINERAL		Gyp	FOSSIL		Ostra		Sltstrg
		Hvymin			Pelec		Ssstrg
		Kaol			Pellet	TEXTURE	
		Marl			Pisolite		Boundst
		Minxl			Plant		Chalky
		Nodule			Strom		Cryxln
		Phos		STRINGER			Earthy
		Pyr			Anhy		Finexln
		Salt			Arg		Grainst
		Sandy			Bent		Lithogr
		Silt			Coal		Microxln
		Sil			Dol		Mudst
		Sulphur			Gyp		Packst
		Tuff			Ls		Wackest
					Mrst		

OTHER SYMBOLS

POROSITY		Vuggy	ROUNDING		Spotted	EVENT	
					Ques		Rft
					Dead		Sidewall
	SORTING						
		Well		INTERVAL			
		Moderate			Core		
		Poor	OIL SHOW		Dst		

Curve Track 1

ROP (min/ft) ———
 Gamma (API) - - - - -

TG, C1-C5
 TG (Units) ———
 C1 (units) - - - - -
 C2 (units)
 C3 (units)
 C4 (units)
 C5 (units)

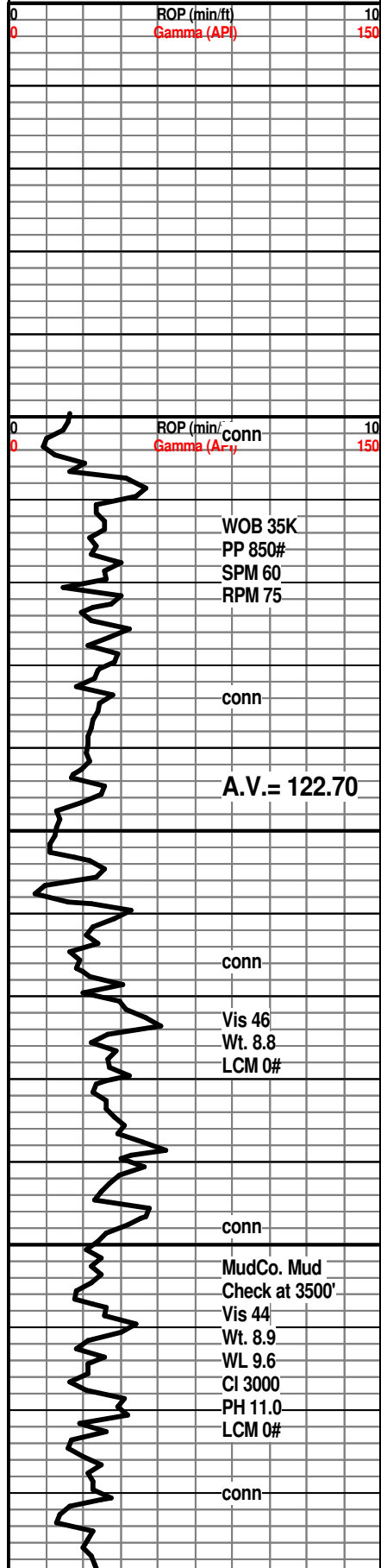
Depth

Porosity Type

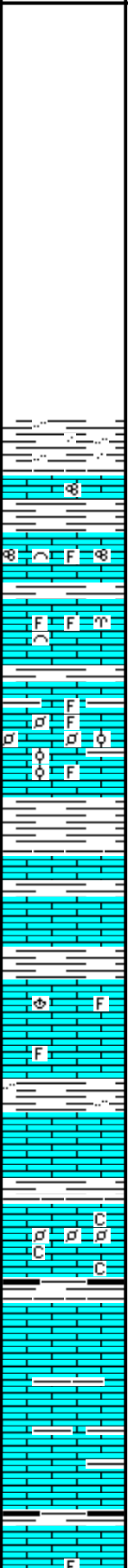
Lithology

Oil Shows

Geological Descriptions



33
 3400
 3450
 3500



STRATA EXPLORATION, INC.

#1-32 HEFT

GEOLOGICAL REPORT

KB. 2231'

SH; lt to med gy, silty to sandy, firm

STOTLER LMST. 3407(-1176)
 LM; lt to med brn, foss, well cem, dull yel min fluor, dense, ns.

LM; tan to lt brn, occ buff, v. foss - abnt fusulinids, most well cem, trc poor interpart por, dull yel min fluor, no stn or odor, ns.

LM; lt to med brn, occ gy brn, some argil, most v. foss, finely pelletal ip, scat poor interpart por, some oolitic lmst, dull yel min fluor, ns.

SH; med gy, occ gy grn, firm

LM; med to dk brn, gy brn, hd, micritic, tite

LM; off wh, tan to buff, fxl n w/scat foss mat, most well cem, interbdd hd micrite, no vis por, no stn or odor, ns.

SH; med gy, occ silty, firm

LM; med brn, dense, micritic, tite

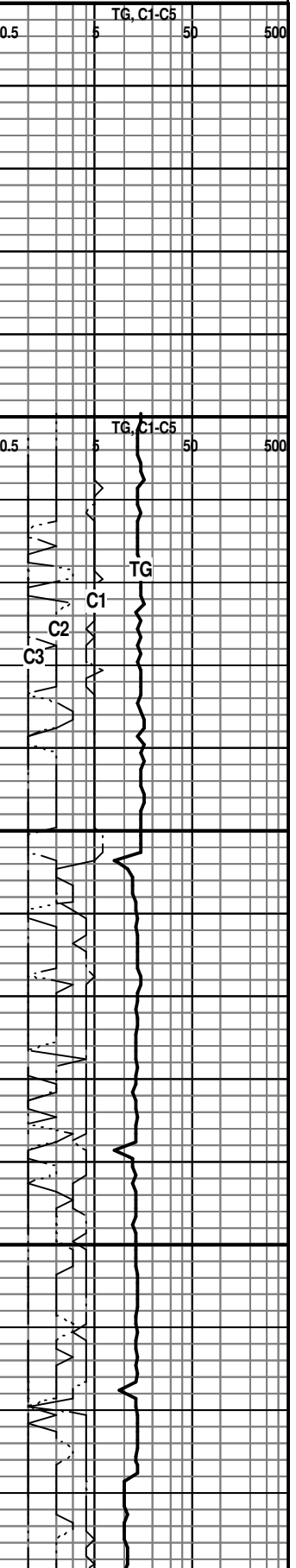
LM; off wh, tan, fxl n, foss ip, scat finely pelletal lmst, minor chalky mtx, lt yel min fluor, no stn or odor, n.s

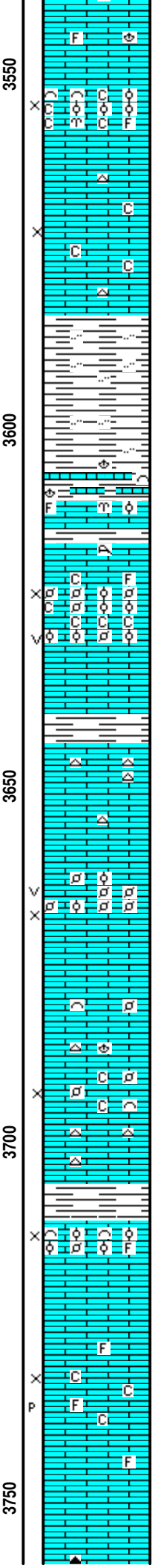
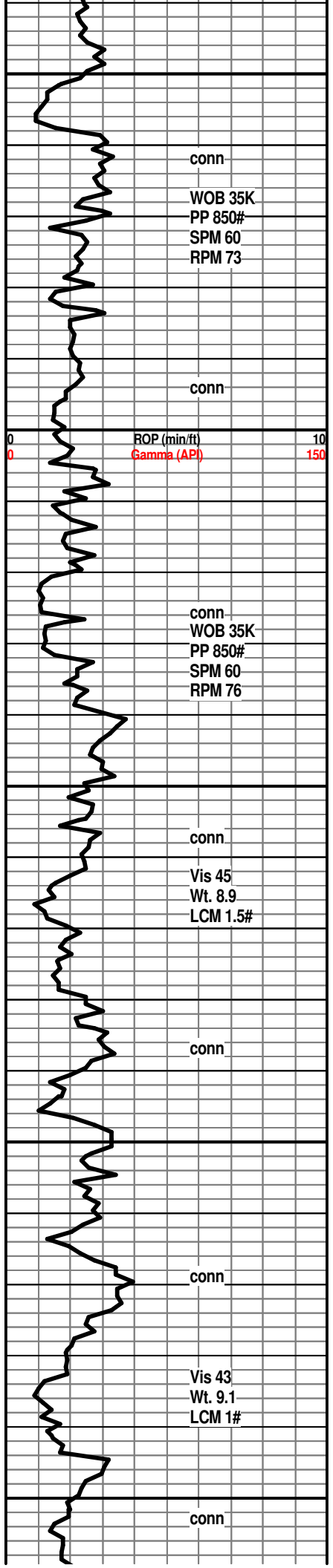
SH; dk gy, trc blk, platy

LM; lt to med brn, occ med gy brn, most dense, interbdd hd argil lmst, rare lt yel min fluor, no stn or odor, no vis por, ns.

SH; med/dk gy, some blk, platy

LM; lt to med brn, occ med gy brn, most dense, interbdd hd argil lmst, rare lt yel min fluor, no stn or odor, no vis por, ns.





LM; lt brn, tan to lt brn, most dense, blocky, occ foss mat, no vis por, ns.

LM; off wh, wh, buff, v. foss - partly oolitic, gd interpart por, much foss hash, chalky soft mtx, lt yel fluor, no stn or odor, no gas kick, ns.

LM; off wh, med to cse xln, fair interxln por, scat soft chalky mtx, trc wh cht, no stn or odor, ns.

SH; med to dk gy, firm, occ silty

SH; grn, gy grn, foss, soft

SH; dk gy, foss, lmy ip, hd

HOWARD 3612(-1381)
 LM; off wh, tan to buff, lt brn, foss ip, most dense, blocky, no vis por, no fluor, ns.

LM; tan to cream, buff, cse xln to gran, foss - pelletal, gd interpart w/vug por, soft, minor chalky mtx, lt yel min fluor, no stn or odor, no gas kick, ns.

SH; grn, gy grn, olive grn, platy

LM; lt brn, tan, most dense, scat cse spar calc xtals, interbdd tan/lt brn cht, no vis por, ns.

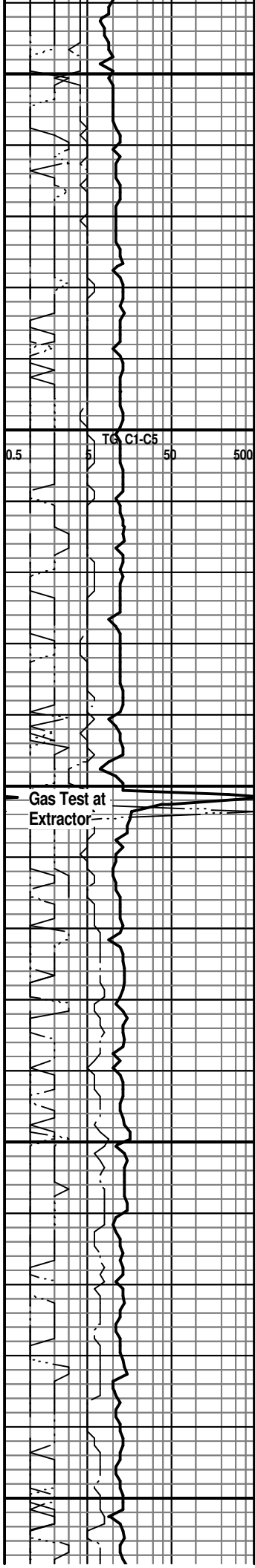
LM; tan to lt brn, buff, med xln w/foss mat - finely pelletal, fair to gd interxln por, occ vug por, lt yel fluor, no stn or odor, no gas kick, ns.

LM; tan to lt brn, off wh, f to med xln, scat foss mat, fair interxln por, minor chalky mtx, dull yel fluor, no stn or odor, ns, bcm cherty at base

SH; med to dk gy, platy to flakey

TOPEKA 3711(-1480)
 LM; off wh, tan, foss - oolitic ip, fair interpart por, some foss hash, lt yel min fluor, no stn, ns.

LM; tan to buff, off wh, f to med xln, gd vis interxln w/scat p-p por, foss ip, no fluor, no stn or odor, minor chalky mtx, ns.



WOB 35K
PP 850#
SPM 60
RPM 74

conn

ROP (min/ft)
Gamma (API)

conn

Vis 48
Wt. 9.1+
LCM 1#

conn

WOB 35K
PP875#
SPM 60
RPM 77
conn

conn

conn

Vis 52
Wt. 9.2
LCM 2#

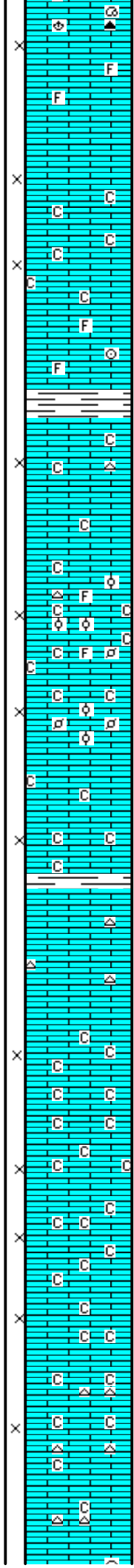
conn

3800

3850

3900

3950



LM; tan to cream, lt brn, most med xln, scat foss, fair interxln por, mat, interbdd amber foss cht, occ lt yel fluor, most barren, ns.

LM; tan to lt brn, some mottled text, interbdd sucrosic text lms, chalky - soft mtx ip, dull yel min fluor only, no stn or odor, ns.

LM; med brn, dense, blocky, foss ip, tite

SH; med gy, grn, platy

LM; tan to lt brn, f to med xln, interbdd sucrosic text, soft, fair interxln por, minor chalky mtx, trc gy/tan cht, dull yel min fluor only, no stn or odor, ns.

LM; wh, off wh, buff, fxln, scat cse foss frags and oolitic lms, incr. chalk and chalky mtx, dull yel min fluor, no stn or odor, ns.

LM; tan to off wh, wh, f to med xln, scat gd interxln por, occ soft-chalky mtx, dull yel min fluor, no stn or odor, ns.

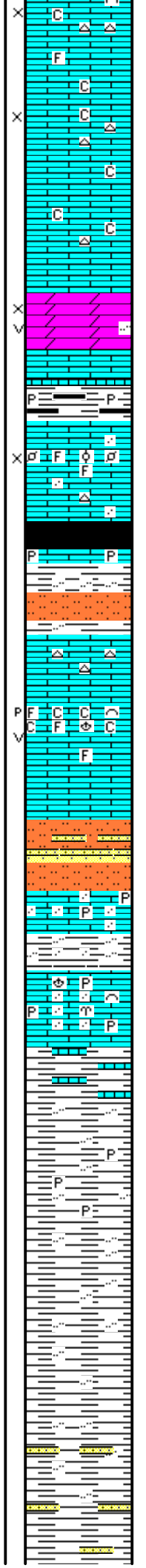
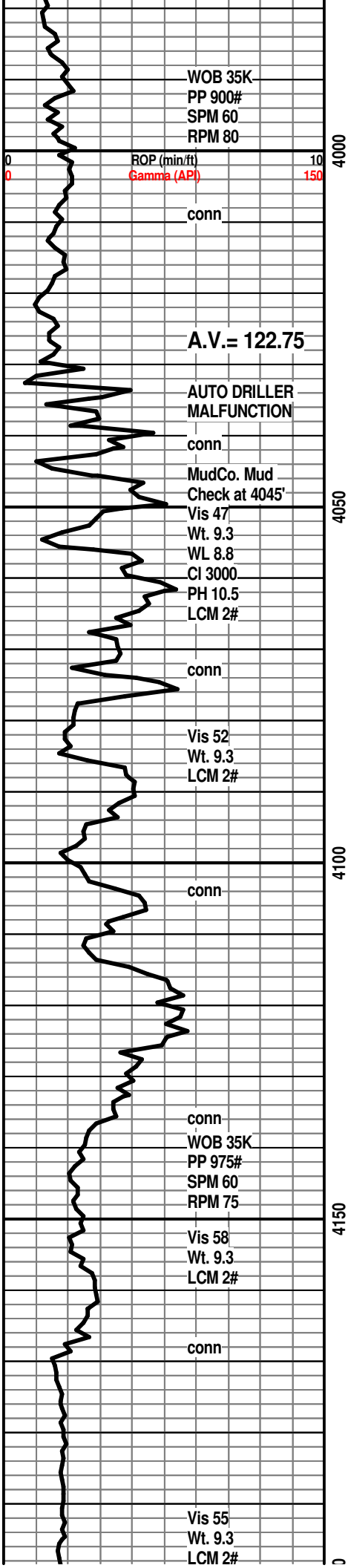
LM; tan to lt brn, hd, most micritic, blocky, scat tan to lt gy cht, tite

LM; tan to cream, off wh, med xln to occ gran text, fair interxln por, much soft chalky mtx, dull to occ lt yel min fluor, no stn or odor, ns.

LM; wh to off wh, med xln, some gran text, much chalk and chalky mtx, fair to gd interxln por, dull yel min fluor, ns.

LM; tan to off wh, cream, f to med xln, gd interxln por ip, occ chalky, interbdd lt gy to tan chert, no stn or odor, no gas kick, ns.

TG, C-C5
0.5 5 50 500



LM; tan to cream, buff, lt brn, med xln to occ gran text, fair interxln por, some well cem, occ soft chalky mtx, dull yel min fluor, ns.

DOL; tan to lt brn, sucrosic, fair interxln/ trc vug por, lt yel min fluor, no stn or odor, ns.

SH; dk gy to blk, fiss, occ pyr

LM; lt to med brn, rare dk brn, foss ip, interbdd pelletal lmst, fair to poor interpart por, some sl. sandy text, dull yel min fluor only, ns.

HEEBNER SHALE 4052(-1821)

SH; blk, carb ip, gassy ip.
LM; med brn, hd, micritic, occ pyr

SH; grn, gy grn, silty w/interbdd sltst.

TORONTO 4068(-1837)

LM; tan to cream, micritic, blocky, cherty ip, tite

LM; off wh, cream, buff, med xln, scat foss mat, fair p-p and occ vug por, rare spar calc xtals, minor chalky mtx, lt yel min fluor, no stn or odor, ns.

DOUGLAS SHALE 4094(-1863)

SLTST; lt gy, sandy, mica ip, interbdd vf gr qtz ss

LM; med gy brn, sandy, hd, pyr ip, tite

SH; lt to med gy, silty to sandy, firm

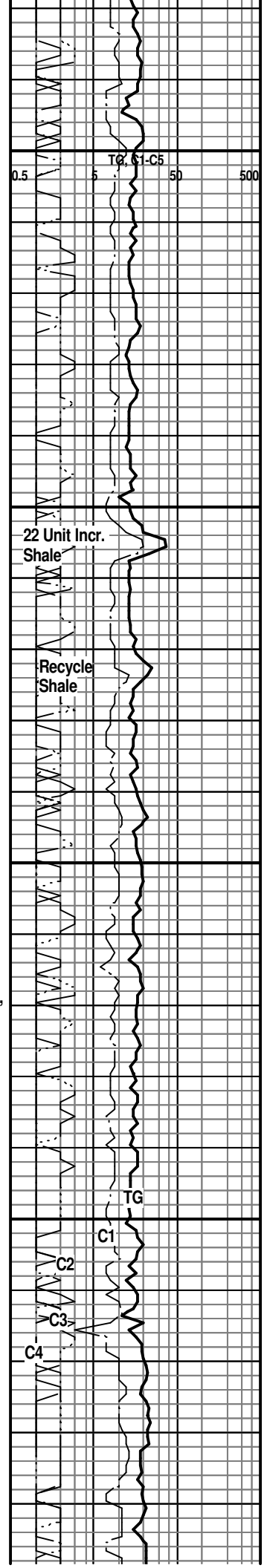
LM; med to dk brn, gy brn, foss, pyr, v. hd, some sandy, no fluor, tite

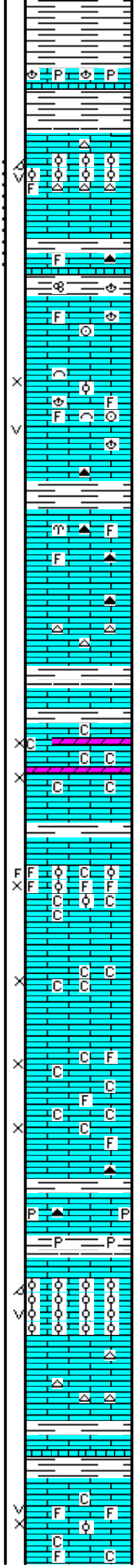
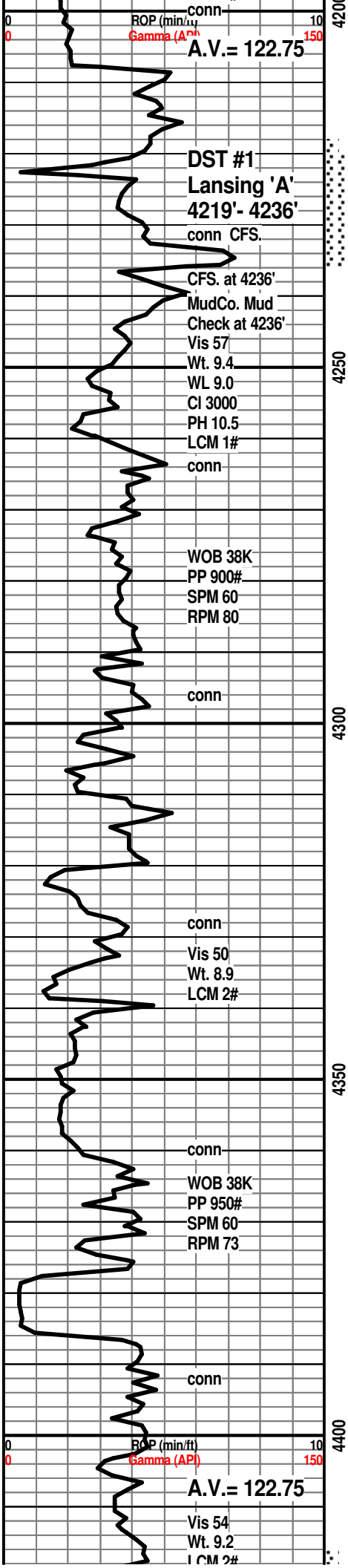
SH; lt to med gy, sandy to silty, lmy w/interbdd shaly lmst

SH; med gy grn, grn, most smooth, occ silty, rare dissep pyr

SH; lt to med gy, silty ip, firm, platy

SH; med gy, silty to sandy, interbdd vf to f gr qtz ss strngs, firm





BROWN LMST. 4208(-1977)
LM; med brn, dense, occ pyr, foss ip.

LANSING 'A' 4217(-1986)
LM; med brn, tan, oolitic, lrg molds w/gd oomoldic por, occ lrg vug por, rare oolitic cht, brittle/fri, med yel fluor, trc med brn oil stn, sev. gas bubbles, no odor, weak cut, gas show

DST #1: Lansing 'A' 4219' - 4236'
SH; med gy, grn, platy, occ foss

LANSING 'B' 4240(-2009)
LM; tan to cream, off wh, fxln, foss ip, most well cem, lt yel fluor, no stn or odor, ns.

LM; tan to off wh, cream, foss, scat cse foss frags and spar calc xtals, fair interpart and vug por, lt yel fluor, no stn or odor, ns.

SH; med gy, grn, firm
LM; med to dk brn, foss ip, most well cem, occ brn foss cht, hd, no vis por, no fluor, ns.

LM; tan to lt brn, hd, micritic, scat gy to tan cht, no vis por, ns.

SH; med gy to grn, platy, smooth
LM; tan to cream, off wh, sucrosic text, interbdd dolo. & dolo. lmst, fair interxln por, much soft chalky mtx, lt yel min fluor, no stn or odor, ns.

LM; off wh, tan to cream, foss - partly oolitic, poor to fair interpart por, much soft chalky mtx, trc blk tarry dead oil, trc frags, lt yel fluor, no odor, no gas kick

LM; tan to buff, cream, f to med xln, scat sucrosic text, fair interxln por, lt yel fluor, occ soft chalky mtx, no stn or odor, ns.

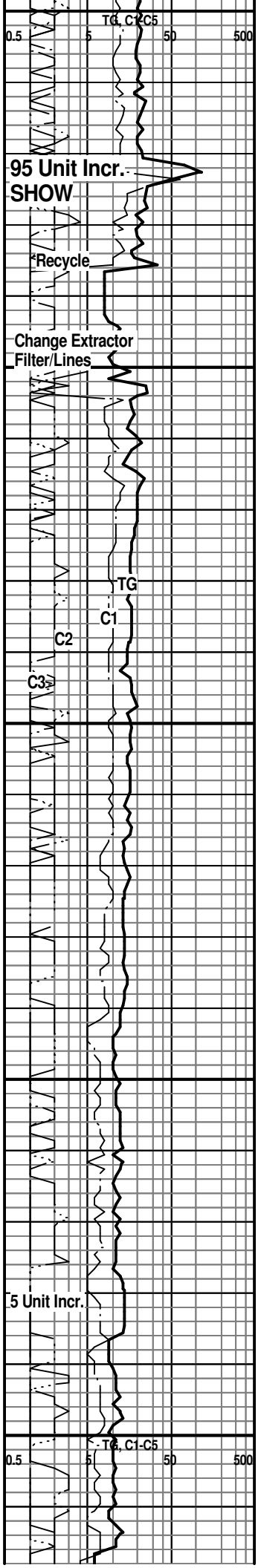
LM; off wh, tan to cream, f to med xln, fair interxln por, interbdd sucrosic text, chalky ip, rare foss mat, lt to med yel min fluor, no stn or odor, ns.

LM; med brn, hd, occ pyr, tite, trc blk cht
SH; med to dk gy, fiss, pyr ip.

LANSING/K.C. 'H' 4375(-2144)
LM; lt to med brn, oolitic, gd oomoldic por, scat vug por, brittle ip, med yel fluor, no vis stn, no odor, no sample shows

LM; med brn, dense, occ cherty, tite
SH; lt to med gy, fiss, flakey

LM; tan to cream, buff, foss, med xln, scat fair to poor interpart por, trc small vug por, soft chalky mtx ip, lt yel min fluor, no stn or odor, ns.



DST #2
K.C. 'I'
4417' - 4435'
 CFS. at 4435'
 MudCo. Mud
 Check at 4435'
 Vis 59
 Wt. 9.3
 WL 9.2
 CI 3000
 PH 10.5
 LCM 1#

WOB 38K
 PP 950#
 SPM 60
 RPM 75
 conn

conn
 Vis 48
 Wt. 9.1
 LCM 2#

conn

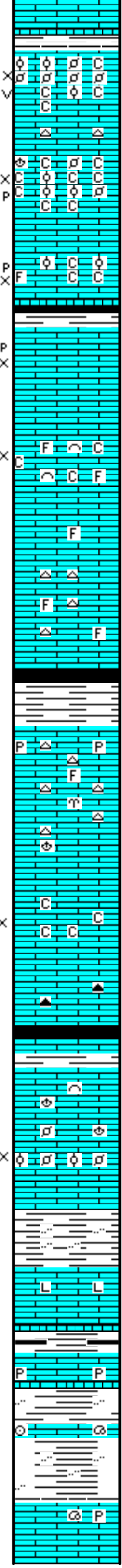
WOB 38K
 PP 950#
 SPM 60
 RPM 71
 conn

Vis 48
 Wt. 9.1
 LCM 1#

conn

WPB 38K
 PP 900#
 SPM 60

4450
4500
4550
4600



K.C. 'I' 4425(-2194)

LM; off wh, finely pelletal to oolitic, weakly cem, some chalky mtx, v. gd oil odor, fair to gd interpart and vug por, spotted/even v. lt brn oil stn, brite yel fluor, SFO, few gas bubbles, gd cut

DST #2: K.C. 'I' 4417' - 4435'

LM; tan to off wh, buff, med xln w/foss mat, fair/gd interpart por, occ p-p por, most w/soft chalky mtx, dull yel fluor, no vis stn, poss faint odor(oil/gas in mud), no sample shows

LM; off wh, wh, tan, fxln, foss ip. w/scat small oolites, occ chalky mtx, poor interxln w/occ p-p por, dull yel fluor, no stn or odor, ns.

K.C. 'J' DENNIS 4464(-2233)

LM; tan to cream, buff, fxln, scat fair interxln w/rare p-p por, few pcs. w/blk tar/gilsonite- dead oil only, no live shows, no odor, dull yel fluor, no gas kick

LM; off wh, tan to cream, foss, scat poor vis interpart por, lt to med yel fluor, chalky mtx ip, some chalk has brite yel fluor, no stn or odor, no gas kick, ns.

LM; tan to lt brn, most dense, occ foss frags - well cem, scat tan cht, no vis por, ns.

STARK SHALE 4512(-2281)

SH; blk, carb ip, platy

SWOPE 4520(-2289)

LM; lt to med brn, mottled text, occ pyr, most dense, blocky, occ gy to tan cht, ns.

LM; off wh, wh, tan, med xln, poor to fair interxln por, soft chalky mtx, dull yel min fluor only, no stn or odor, ns.

SH; blk, carb ip, trc gas, soft to brittle

HERTHA 4568(-2337)

LM; med brn, occ med gy brn, most blocky, hd, scat well cem foss frags, minor pyr, no vis por, no stn or odor, ns.

LM; tan to lt brn, foss, finely pelletal w/scat small ooids, most well cem, trc poor interpart por, no fluor, ns.

SH; dk gy, gy brn, gritty/silty text, lmy

LM; med to dk brn, hd, litho, dense

BASE KANSAS CITY 4605(-2374)

SH; dk gy, grn, brn, trc blk, platy
LM; dk brn, dense, occ pyr, hd

SH; varic, pred gy, dk gy, rust red, grn, platy, silty ip, interbdd nodular hd foss lmst.

PLEASANTON 4629(-2398)

LM; lt to med gy, lt brn, most hd, micritic, rare well cem foss mat. occ ovr. no vis por. no stn or odor. ns.

40 Unit Incr. SHOW

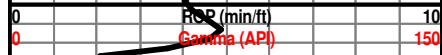
OIL AND GAS IN MUD AFTER DST #2

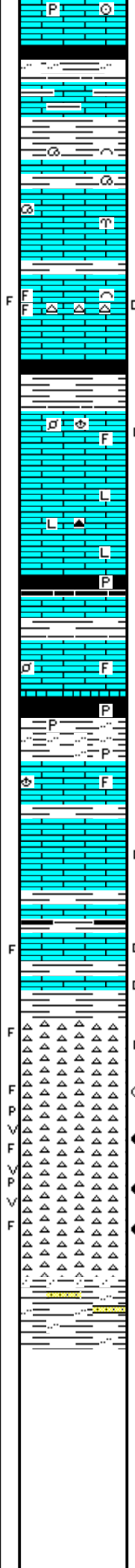
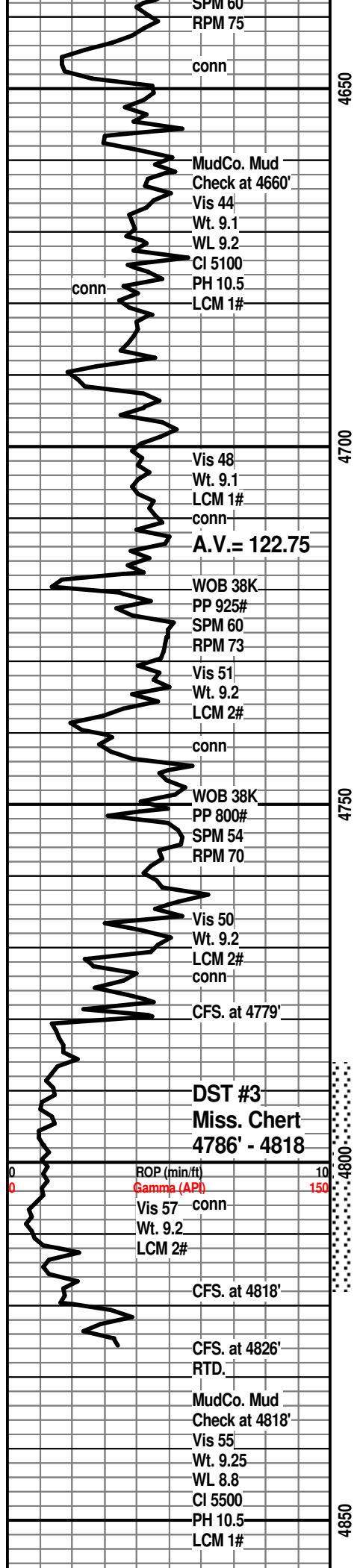
15 Unit Incr. Shale

13 Unit Incr. Shale

C4
C3
C2
C1

TG; C1-C5





SH; dk gy, blk, varic, soft - flakey, occ silty
MARMATON 4649(-2418)
 LM; lt to med brn, argil ip - grn clay/shale incl, most dense, tite
 SH; med to dk gy, gy grn, foss ip, firm

LM; tan to lt brn, most dense, micritic, blocky, rare foss mat, scat lt to med yel min fluor, no stn or odor, ns.

LM; tan to off wh, cream, foss ip, scat wh cht w/blk dead oil stn - poss frags, dull yel fluor, poor por, scat blk dead oil stn on few pcs, no live shows, no odor, no cut
 SH; blk, dk gy, platy, soft ip.
PAWNEE 4695(-2464)
 LM; tan to lt brn, foss ip, much dense micrite, scat cse spar calc xtals, few pcs. w/blk tar/gilsonite, no vis por, no live shows, tite

LM; lt to med brn, rare dk brn, dense, litho, hd, rare smoky cht, no fluor, ns.
 SH; blk, carb, gassy ip, rare pyr

LM; lt brn, tan, foss ip, most well cem, no vis por, no fluor, no stn or odor, ns.
CHEROKEE SHALE 4735(-2504)
 SH; blk, dk gy, platy, some silty shales, pyr ip.

LM; lt to med brn, fxln to foss, most well cem, hd, dull yel min fluor, no stn or odor, ns.

LM; tan to cream, buff, f to mxln, most well cem, poor/no vis por, scat spar calc xtals, dull yel min fluor, trc blk tarry dead oil/gil, no live shows
 SH; med to dk gy, trc blk, fiss
 LM; tan to lt brn, most dense, poss frags - dk brn/blk stn on edges on few pcs, dull yel fluor, no live shows

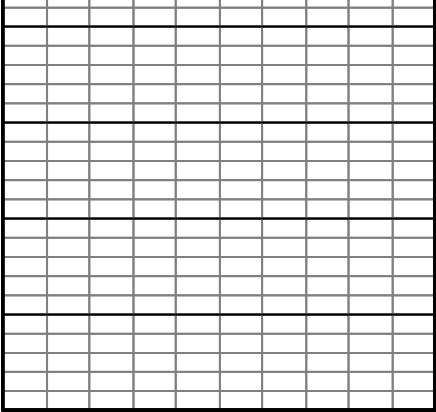
MISSISSIPPI CHERT 4780(-2549)
 CHT; wh, org, off wh, most fresh, rare oil stn, few frags vis, scat blk tarry dead oil, looks tite
 CHT; wh, off wh, fresh and trip cht, much med brn oil stn, SSFO, fair odor, scat even to spotted oil stn, gas bubbles, fair trip por, some edge stn - frags, med to brite yel fluor
 CHT; wh, off wh, fresh and trip, some p-p and gd vug por w/even med brn oil stn, gas bubbles, frags w/blk tar on frac faces, much brite yel fluor, fair odor

KINDERHOOK SHALE 4816(-2585)
 SH; grn, sandy, firm, f gr qtz embdd in shale
DST #3: Miss. Chert 4786' - 4818'
 SH; med grn, gy grn, firm, occ silty to sandy

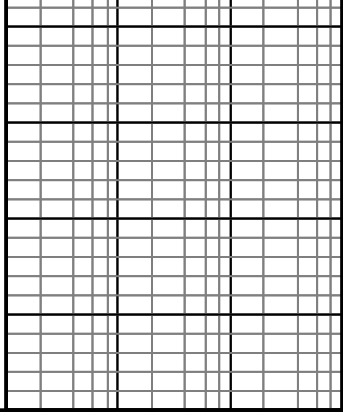
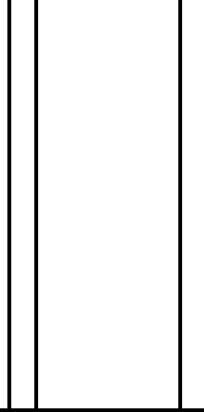
RTD. 4826' at 5:30 PM. 3/16/11
 LTD. 4826'

Halliburton DIL, NEU/DEN, Microlog





00





**TRILOBITE
TESTING, INC.**

DRILL STEM TEST REPORT

Strata Exploration Inc.

Heft#1-32

P.O.Box 401
Fairfield Il.62837

32-27s-18w Kiowa Ks

Job Ticket: 041615

DST#: 1

ATTN: Jon Christensen

Test Start: 2011.03.13 @ 00:07:15

GENERAL INFORMATION:

Formation: **Lans. A**

Deviated: No Whipstock: ft (KB)

Time Tool Opened: 02:10:15

Time Test Ended: 07:50:15

Test Type: Conventional Bottom Hole

Tester: Gary Pevoteaux

Unit No: 56

Interval: 4219.00 ft (KB) To 4236.00 ft (KB) (TVD)

Reference Elevations: 2231.00 ft (KB)

Total Depth: 4236.00 ft (KB) (TVD)

2222.00 ft (CF)

Hole Diameter: 7.88 inches Hole Condition: Fair

KB to GR/CF: 9.00 ft

Serial #: 8167 Inside

Press @ Run Depth: 32.15 psig @ 4220.00 ft (KB)

Capacity: 8000.00 psig

Start Date: 2011.03.13

End Date:

2011.03.13

Last Calib.:

2011.03.13

Start Time: 00:07:20

End Time:

07:50:14

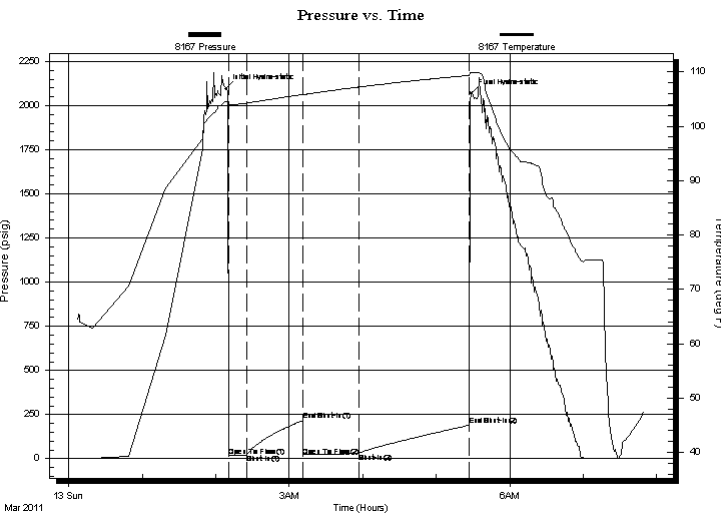
Time On Btm:

2011.03.13 @ 02:08:30

Time Off Btm:

2011.03.13 @ 05:28:15

TEST COMMENT: IF: Strong blow . B.O.B. in 10 secs.
IS: No blow .
FF: Fair to strong blow . B.O.B. in 45 mins.
FS: No blow .



PRESSURE SUMMARY

Time (Min.)	Pressure (psig)	Temp (deg F)	Annotation
0	2094.65	104.55	Initial Hydro-static
2	13.47	103.96	Open To Flow (1)
17	22.77	104.27	Shut-In(1)
63	217.23	105.86	End Shut-In(1)
63	16.36	105.80	Open To Flow (2)
108	32.15	107.22	Shut-In(2)
199	191.06	109.38	End Shut-In(2)
200	2070.30	109.83	Final Hydro-static

Recovery

Length (ft)	Description	Volume (bbl)
20.00	SGCM 3%g 97%m	0.10
0.00	615 ft.of GIP	0.00

Gas Rates

	Choke (inches)	Pressure (psig)	Gas Rate (Mcf/d)



**TRILOBITE
TESTING, INC.**

DRILL STEM TEST REPORT

FLUID SUMMARY

Strata Exploration Inc.

Heft#1-32

P.O.Box 401
Fairfield Il.62837

32-27s-18w Kiowa Ks

Job Ticket: 041615

DST#: 1

ATTN: Jon Christensen

Test Start: 2011.03.13 @ 00:07:15

Mud and Cushion Information

Mud Type: Gel Chem

Cushion Type:

Oil API:

deg API

Mud Weight: 9.00 lb/gal

Cushion Length:

ft

Water Salinity:

3000 ppm

Viscosity: 57.00 sec/qt

Cushion Volume:

bbf

Water Loss: 8.79 in³

Gas Cushion Type:

Resistivity: 0.00 ohm.m

Gas Cushion Pressure:

psig

Salinity: 3000.00 ppm

Filter Cake: 0.20 inches

Recovery Information

Recovery Table

Length ft	Description	Volume bbf
20.00	SGCM 3%g 97%m	0.098
0.00	615 ft.of GIP	0.000

Total Length: 20.00 ft Total Volume: 0.098 bbf

Num Fluid Samples: 0

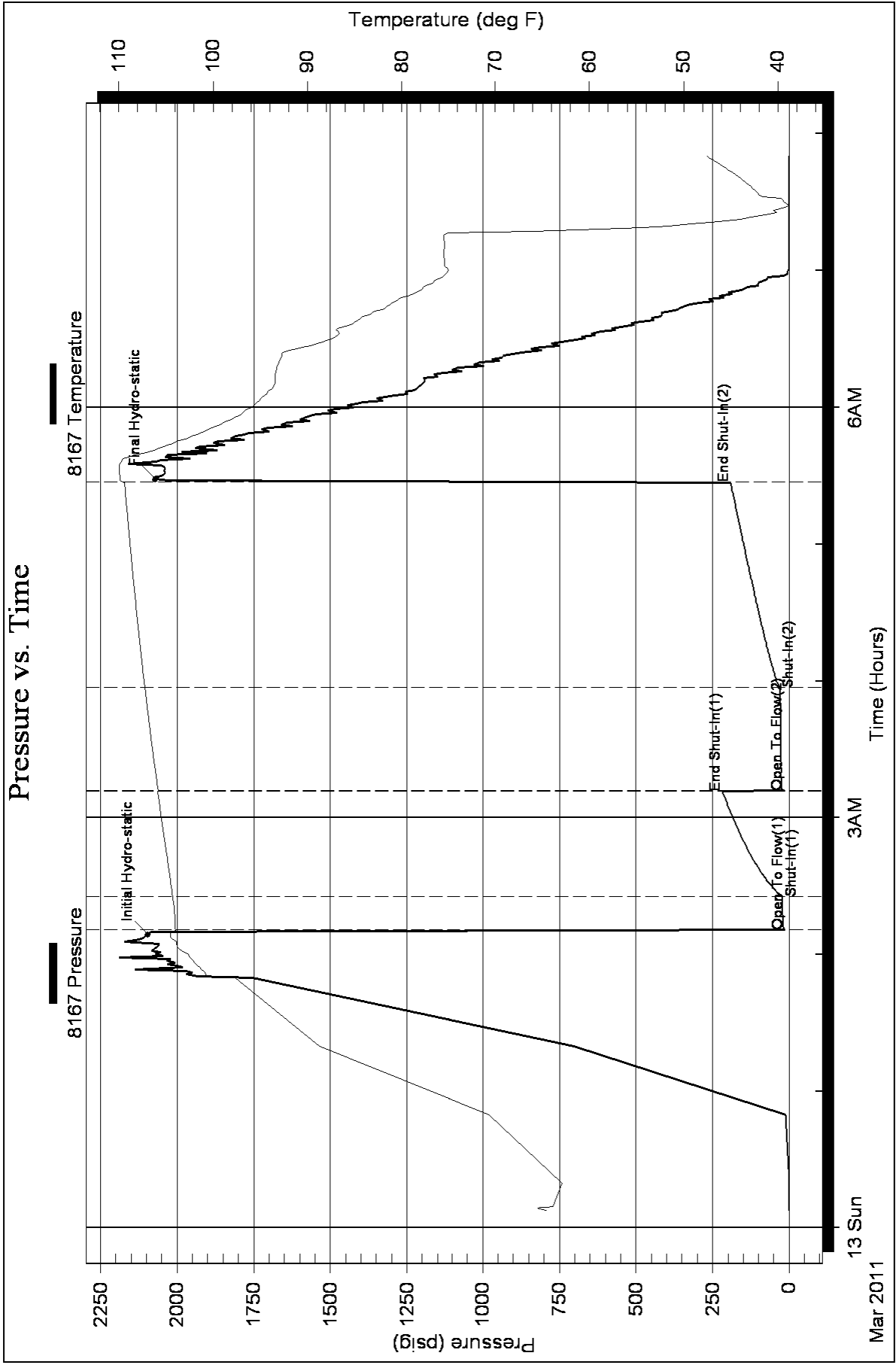
Num Gas Bombs: 0

Serial #: none

Laboratory Name:

Laboratory Location:

Recovery Comments:





**TRILOBITE
TESTING, INC**

DRILL STEM TEST REPORT

Strata Exploration Inc.

Heft#1-32

P.O.Box 401
Fairfield Il.62837

32-27s-18w Kiowa Ks

ATTN: Jon Christensen

Job Ticket: 041616

DST#: 2

Test Start: 2011.03.14 @ 05:36:20

GENERAL INFORMATION:

Formation: **KC. I**

Deviated: No Whipstock: ft (KB)

Time Tool Opened: 08:04:05

Time Test Ended: 14:35:50

Test Type: Conventional Bottom Hole

Tester: Gary Pevoteaux

Unit No: 56

Interval: 4417.00 ft (KB) To 4435.00 ft (KB) (TVD)

Reference Elevations: 2231.00 ft (KB)

Total Depth: 4435.00 ft (KB) (TVD)

2222.00 ft (CF)

Hole Diameter: 7.88 inches Hole Condition: Fair

KB to GR/CF: 9.00 ft

Serial #: 8167 Inside

Press @ Run Depth: 189.68 psig @ 4418.00 ft (KB)

Capacity: 8000.00 psig

Start Date: 2011.03.14

End Date:

2011.03.14

Last Calib.:

2011.03.14

Start Time: 05:36:25

End Time:

14:35:50

Time On Btm:

2011.03.14 @ 08:01:35

Time Off Btm:

2011.03.14 @ 11:29:35

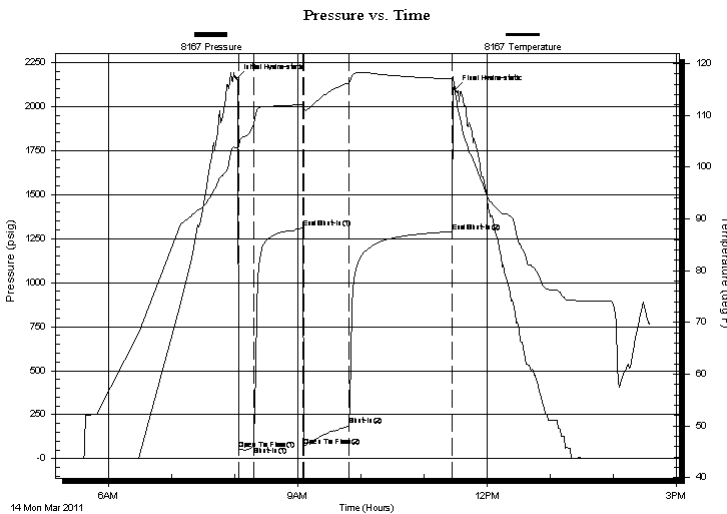
TEST COMMENT: IF: Strong blow . B.O.B. in 90 secs. GTS in 15 mins.

IS: Strong blow . B.O.B.

FF: Strong blow . (see gas flow report)

FS: Strong blow . B.O.B.

PRESSURE SUMMARY



Time (Min.)	Pressure (psig)	Temp (deg F)	Annotation
0	2160.58	103.73	Initial Hydro-static
3	51.73	103.83	Open To Flow (1)
16	69.19	108.04	Shut-In(1)
64	1309.38	112.08	End Shut-In(1)
65	72.12	111.18	Open To Flow (2)
107	189.68	116.30	Shut-In(2)
206	1289.86	117.07	End Shut-In(2)
208	2097.44	113.98	Final Hydro-static

Recovery

Length (ft)	Description	Volume (bbl)
50.00	MW 4% m 96% w /Rw .14 ohms @63deg	0.25
60.00	GM&WCO 55%g 9% m 8% w 28% o	0.30
190.00	GM&WCO 41%g 5% m 18% w 36% o	1.98
215.00	CGO 35%g 65% o	3.02

Gas Rates

	Choke (inches)	Pressure (psig)	Gas Rate (Mcf/d)
First Gas Rate	0.25	7.00	33.95
Last Gas Rate	0.25	13.00	43.47
Max. Gas Rate	0.25	13.00	43.47



**TRILOBITE
TESTING, INC**

DRILL STEM TEST REPORT

FLUID SUMMARY

Strata Exploration Inc.

Heft#1-32

P.O.Box 401
Fairfield Il.62837

32-27s-18w Kiowa Ks

Job Ticket: 041616

DST#: 2

ATTN: Jon Christensen

Test Start: 2011.03.14 @ 05:36:20

Mud and Cushion Information

Mud Type: Gel Chem

Cushion Type:

Oil API:

42 deg API

Mud Weight: 9.00 lb/gal

Cushion Length:

ft

Water Salinity:

59000 ppm

Viscosity: 54.00 sec/qt

Cushion Volume:

bbf

Water Loss: 8.99 in³

Gas Cushion Type:

Resistivity: 0.00 ohm.m

Gas Cushion Pressure:

psig

Salinity: 3000.00 ppm

Filter Cake: 0.20 inches

Recovery Information

Recovery Table

Length ft	Description	Volume bbf
50.00	MW 4% <i>m</i> 96% <i>w</i> /Rw .14 ohms @63deg	0.246
60.00	GM&WCO 55% <i>g</i> 9% <i>m</i> 8% <i>w</i> 28% <i>o</i>	0.295
190.00	GM&WCO 41% <i>g</i> 5% <i>m</i> 18% <i>w</i> 36% <i>o</i>	1.982
215.00	CGO 35% <i>g</i> 65% <i>o</i>	3.016

Total Length: 515.00 ft

Total Volume: 5.539 bbl

Num Fluid Samples: 0

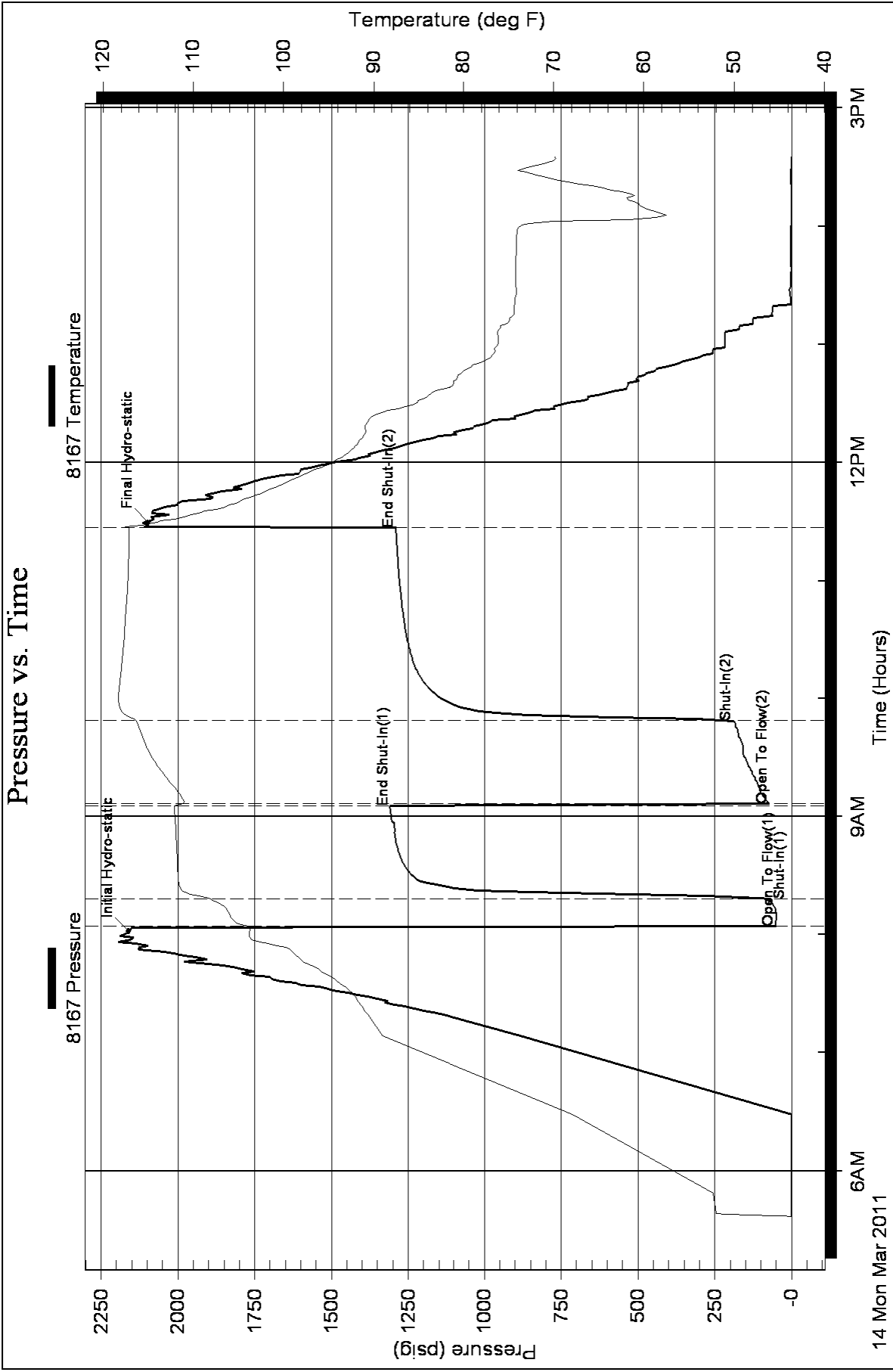
Num Gas Bombs: 1

Serial #: gp-2

Laboratory Name: caraw ay

Laboratory Location:

Recovery Comments:





**TRILOBITE
TESTING, INC**

DRILL STEM TEST REPORT

Strata Exploration Inc.

Heft#1-32

P.O.Box 401
Fairfield Il.62837

32-27s-18w Kiowa Ks

Job Ticket: 041617

DST#: 3

ATTN: Jon Christensen

Test Start: 2011.03.16 @ 05:27:54

GENERAL INFORMATION:

Formation: **Miss.**

Deviated: No Whipstock: ft (KB)

Time Tool Opened: 08:03:09

Time Test Ended: 14:21:39

Test Type: Conventional Bottom Hole

Tester: Gary Pevoteaux

Unit No: 56

Interval: 4786.00 ft (KB) To 4818.00 ft (KB) (TVD)

Reference Elevations: 2231.00 ft (KB)

Total Depth: 4818.00 ft (KB) (TVD)

2222.00 ft (CF)

Hole Diameter: 7.88 inches Hole Condition:

KB to GR/CF: 9.00 ft

Serial #: 8167

Inside

Press @RunDepth: 91.80 psig @ 4787.00 ft (KB)

Capacity: 8000.00 psig

Start Date: 2011.03.16

End Date: 2011.03.16

Last Calib.: 2011.03.16

Start Time: 05:27:59

End Time: 14:21:39

Time On Btm: 2011.03.16 @ 07:57:39

Time Off Btm: 2011.03.16 @ 12:08:54

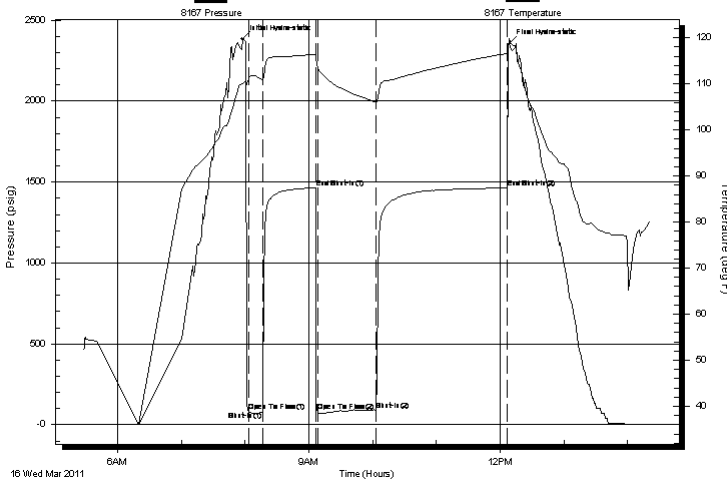
TEST COMMENT: IF:Strong blow . GTS in 4 mins.(see gas flow report)

IS:Strong blow . B.O.B.

FF:Strong blow . (see gas flow report)

FS:Strong blow . B.O.B.

Pressure vs. Time



PRESSURE SUMMARY

Time (Min.)	Pressure (psig)	Temp (deg F)	Annotation
0	2383.88	110.00	Initial Hydro-static
6	84.76	111.01	Open To Flow (1)
19	81.72	110.83	Shut-In(1)
69	1464.94	116.45	End Shut-In(1)
71	82.29	113.62	Open To Flow (2)
126	91.80	106.04	Shut-In(2)
250	1463.13	116.58	End Shut-In(2)
252	2354.38	119.87	Final Hydro-static

Recovery

Length (ft)	Description	Volume (bbl)
45.00	SOCM 2%o 98%m	0.22
80.00	Drig.mud	0.39

Gas Rates

	Choke (inches)	Pressure (psig)	Gas Rate (Mcf/d)
First Gas Rate	0.50	18.00	218.56
Last Gas Rate	0.50	34.00	326.49
Max. Gas Rate	0.50	36.00	339.98



**TRILOBITE
TESTING, INC**

DRILL STEM TEST REPORT

FLUID SUMMARY

Strata Exploration Inc.

Heft#1-32

P.O.Box 401
Fairfield Il.62837

32-27s-18w Kiowa Ks

Job Ticket: 041617

DST#: 3

ATTN: Jon Christensen

Test Start: 2011.03.16 @ 05:27:54

Mud and Cushion Information

Mud Type: Gel Chem

Cushion Type:

Oil API:

deg API

Mud Weight: 9.00 lb/gal

Cushion Length:

ft

Water Salinity:

5100 ppm

Viscosity: 57.00 sec/qt

Cushion Volume:

bbf

Water Loss: 9.19 in³

Gas Cushion Type:

Resistivity: 0.00 ohm.m

Gas Cushion Pressure:

psig

Salinity: 5100.00 ppm

Filter Cake: 0.20 inches

Recovery Information

Recovery Table

Length ft	Description	Volume bbf
45.00	SOCM 2%o 98%m	0.221
80.00	Drig.mud	0.393

Total Length: 125.00 ft

Total Volume: 0.614 bbf

Num Fluid Samples: 0

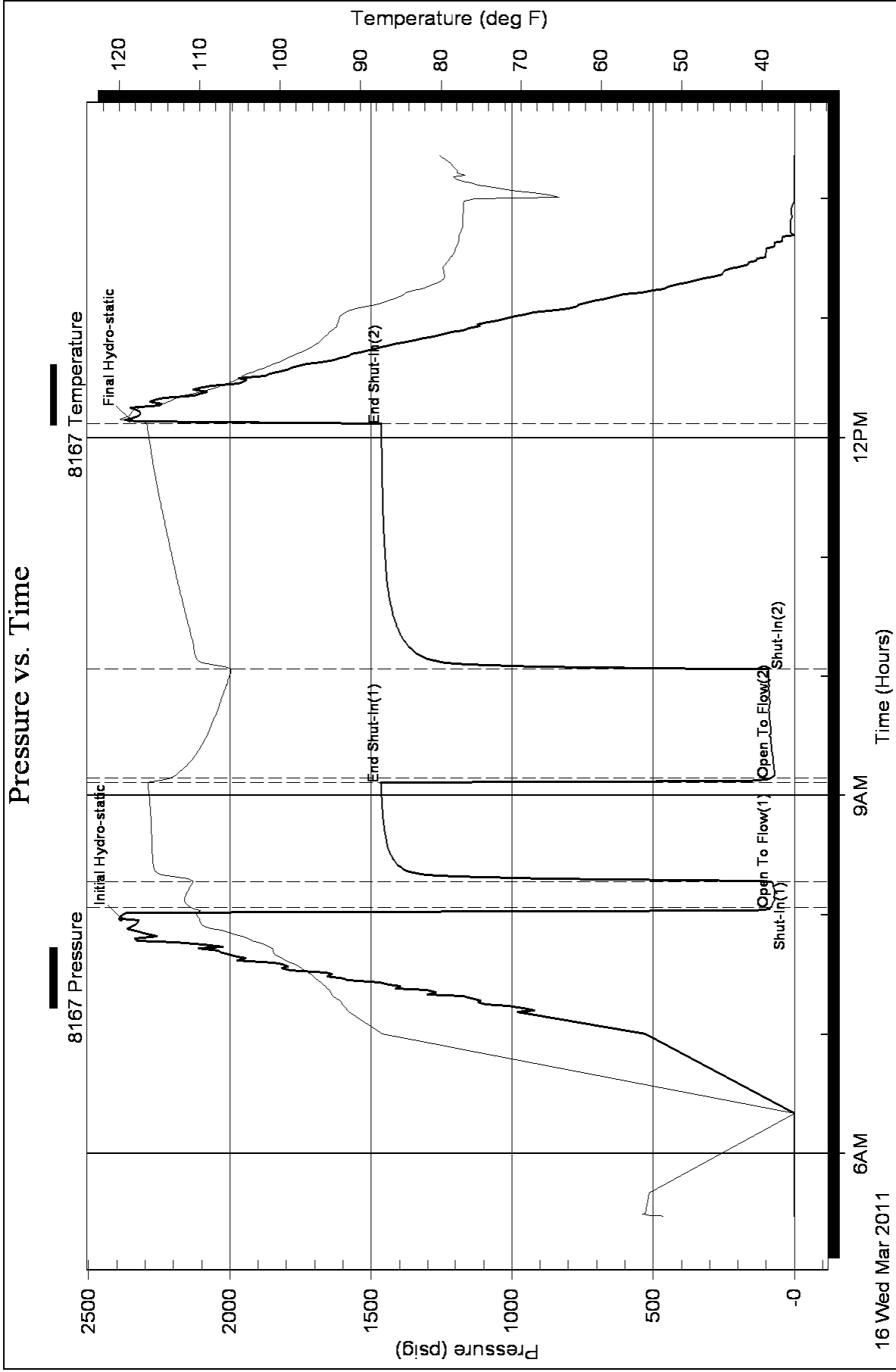
Num Gas Bombs: 1

Serial #: gp-3

Laboratory Name: caraway

Laboratory Location:

Recovery Comments:





PAGE	CUST NO	INVOICE DATE
1 of 1	1004072	03/08/2011
INVOICE NUMBER		
1717 - 90540189		

3-14

Liberal (620) 624-2277
 B STRATA EXPLORATION
 I PO Box: 401
 L FAIRFIELD
 L IL US 62837
 T
 O ATTN:

J LEASE NAME Heft #1-32
 O LOCATION
 B COUNTY Kiowa
 S STATE KS
 I JOB DESCRIPTION Cement-New Well Casing/Pi
 T
 E JOB CONTACT

JOB #	EQUIPMENT #	PURCHASE ORDER NO.	TERMS	DUE DATE
40293070	14284		Net - 30 days	04/07/2011

For Service Dates: 03/08/2011 to 03/08/2011

0040293070

171701511A Cement-New Well Casing/Pi 03/08/2011
 8 5/8" Surface

LEASE	HEFT # 1-32	LEV 5	P/P
DES	CEMENT SURF		A/P
DR. FROM	LOE G/L	71730/8726	62 D/D

	QTY	U of M	UNIT PRICE	INVOICE AMOUNT
A-Serv Lite	200.00	EA	9.75	1,950.00 T
Premium Plus Cement	200.00	EA	12.22	2,444.99 T
Celloflake	100.00	EA	2.78	277.50 T
Calcium Chloride	1,086.00	EA	0.79	855.23 T
Cement Gel	376.00	EA	0.19	70.50 T
Top Rubber Cement Plug - 8 5/8"	1.00	EA	168.75	168.75
Pickup Mileage	30.00	MI	3.19	95.63
Heavy Equipment Mileage	60.00	MI	5.25	315.00
Proppant and Bulk Delivery Charge	543.00	MI	1.20	651.60
Depth Charge; 0-500'	1.00	EA	750.00	750.00
Blending & Mixing Service Charge	400.00	MI	1.05	420.00
Plug Container Utilization Charge	1.00	EA	187.50	187.50
Service Supervisor	1.00	HR	131.25	131.25

PLEASE REMIT TO:	SEND OTHER CORRESPONDENCE TO:	SUB TOTAL	8,317.95
BASIC ENERGY SERVICES, LP	BASIC ENERGY SERVICES, LP	TAX	408.67
PO BOX 841903	PO BOX 10460	INVOICE TOTAL	8,726.62
DALLAS, TX 75284-1903	MIDLAND, TX 79702		



1700 S. Country Estates Rd.
 P.O. Box 129
 Liberal, Kansas 67905
 Phone 620-624-2277

FIELD SERVICE TICKET
 1717 01511 A

DATE _____ TICKET NO. _____

DATE OF JOB: 3-8-11		DISTRICT: 1717		NEW WELL <input checked="" type="checkbox"/> OLD WELL <input type="checkbox"/>		PROD <input type="checkbox"/> INJ <input type="checkbox"/> WDW <input type="checkbox"/>		CUSTOMER ORDER NO.:		
CUSTOMER: Smith Exploration Inc.				LEASE: H-ft				WELL NO. 1-72		
ADDRESS:				COUNTY: Kiowa				STATE: KS		
CITY:				STATE:				SERVICE CREW: Cochran/Mendoza/S. Chavez		
AUTHORIZED BY: Bennett JRB				JOB TYPE: 2 1/2" 8 1/2" Surface						
EQUIPMENT#	HRS	EQUIPMENT#	HRS	EQUIPMENT#	HRS	TRUCK CALLED	DATE	AM	TIME	
11705	5						3-7	AM	10:00	
19889	5						3-7	AM	23:30	
19842	5						3-8	AM	02:15	
11755	5						3-8	AM	02:15	
11284	5						3-8	AM	04:30	
						MILES FROM STATION TO WELL	107			

CONTRACT CONDITIONS: (This contract must be signed before the job is commenced or merchandise is delivered).

The undersigned is authorized to execute this contract as an agent of the customer. As such, the undersigned agrees and acknowledges that this contract for services, materials, products, and/or supplies includes all of and only those terms and conditions appearing on the front and back of this document. No additional or substitute terms and/or conditions shall become a part of this contract without the written consent of an officer of Basic Energy Services LP.

SIGNED: [Signature]
 (WELL OWNER, OPERATOR, CONTRACTOR OR AGENT)

ITEM/PRICE REF. NO.	MATERIAL, EQUIPMENT AND SERVICES USED	UNIT	QUANTITY	UNIT PRICE	\$ AMOUNT	
CL106	A-Serv Lite	SK	200		2600.00	
CL110	Premium Plus	SK	200		3260.00	
CC102	Cellulose	lb	100		370.00	
CC109	Calcium Chloride	lb	1080		1140.00	
CC200	Cement Gel	lb	376		94.00	
CF105	Top Plug	ea	1		225.00	
E110	Pick-up Mileage	mi	30		127.50	
E101	Heavy Equip Mileage	mi	10		420.00	
E113	Bulk Delivery	TM	543		868.80	
PS200	Depth Charge C-500	4lb	1		1000.00	
CS240	Blending + Mixing Serv. Chrg.	SK	400		560.00	
CS564	Plug Container	job	1		250.00	
3003	Service Supervisor	ea	1		175.00	
					SUB TOTAL	2317.75

CHEMICAL / ACID DATA:			

SERVICE & EQUIPMENT	%TAX ON \$	
MATERIALS	%TAX ON \$	
TOTAL		

SERVICE REPRESENTATIVE: <u>[Signature]</u>	THE ABOVE MATERIAL AND SERVICE ORDERED BY CUSTOMER AND RECEIVED BY: <u>[Signature]</u> (WELL OWNER OPERATOR CONTRACTOR OR AGENT)
--	---

FIELD SERVICE ORDER NO. _____

Cement Report

Customer <i>Sprint Exploration, Inc.</i>		Lease No. <i>19889-19841</i>		Date <i>5-4-14</i>	
Lease <i>Hest</i>		Well # <i>F-32</i>		Service Receipt <i>141176-1511</i>	
Casing <i>8 1/2</i>	Depth <i>521</i>	County <i>Knowlton</i>		State <i>Ks</i>	
Job Type <i>7'92 8 1/2 Surface</i>		Formation		Legal Description <i>32 27 12</i>	
Pipe Data			Perforating Data		Cement Data
Casing size <i>8 1/2 24"</i>	Tubing Size <i>3 1/2</i>	Shots/Ft		Lead <i>200-10-150-140</i>	
Depth <i>521</i>	Depth	From	To	<i>32 CC - 1/4 + 2.11/14</i> <i>1.51475k 7.247/14</i> <i>@ 17.4#/ft</i>	
Volume	Volume	From	To		
Max Press <i>4</i>	Max Press <i>4</i>	From	To	Tail in <i>400-10-150-140</i>	
Well Connection	Annulus Vol.	From	To	<i>22.61-2.88-74 2.11/14</i> <i>1.51475k 6.739/15k</i> <i>@ 14.8#/ft</i>	
Plug Depth	Packer Depth	From	To		

Time	Casing Pressure	Tubing Pressure	Bbls. Pumped	Rate	Service Log
<i>00:30</i>					<i>on loc. / Well safety meeting</i>
<i>01:00</i>					<i>Start Csg</i>
<i>01:40</i>					<i>Csg on Bottom Crew w/ Rig</i>
<i>02:32</i>	<i>2560</i>				<i>Test Pump + Pipes</i>
<i>02:55</i>	<i>200</i>		<i>58</i>	<i>5</i>	<i>Start Lead Crnt 200-10-150-140</i>
<i>02:47</i>	<i>260</i>		<i>48</i>	<i>4.5</i>	<i>Start Tail Crnt 200-10-150-140</i>
<i>02:58</i>					<i>Shutdown + Disp Plug</i>
<i>03:12</i>	<i>110</i>		<i>0</i>	<i>4</i>	<i>Start Disp. w/ 110 1140</i>
<i>03:08</i>	<i>110</i>		<i>22</i>	<i>2</i>	<i>Slow Rate</i>
<i>03:17</i>	<i>145</i>		<i>31.6</i>	<i>2</i>	<i>Shutdown + Start in Well</i>
<i>03:15</i>					<i>End Job</i>
					<i>Went 30% of CMT in Pipe</i>
					<i>Well shut in w/ 175#</i>
					<i>Circulated CMT to the Pit</i>

Service Units	<i>19889</i>	<i>19889-19841</i>	<i>141176-1511</i>			
Driver Names	<i>Bohannon</i>	<i>Mudetz</i>	<i>S. Chavez</i>			

Carrie Martin _____ Customer Representative
 J. Bohannon _____ Station Manager
 M. Bohannon _____ Cementer

Taylor Printing, Inc.



PAGE 1 of 1	CUST NO 1004072	INVOICE DATE 03/18/2011
INVOICE NUMBER 1718 - 90549445		

Pratt (620) 672-1201
 B STRATA EXPLORATION
 I PO Box: 401
 L FAIRFIELD
 L IL US 62837
 T
 O ATTN:

J LEASE NAME Heft 1-32
 O LOCATION
 B COUNTY Kiowa
 S STATE KS
 I JOB DESCRIPTION Cement-New Well Casing/Pi
 T
 E JOB CONTACT

JOB #	EQUIPMENT #	PURCHASE ORDER NO.	TERMS	DUE DATE
40297269	20920		Net - 30 days	04/17/2011

	QTY	U of M	UNIT PRICE	INVOICE AMOUNT
<i>For Service Dates: 03/17/2011 to 03/17/2011</i>				
0040297269				
171803634A Cement-New Well Casing/Pi 03/17/2011				
5 1/2" Longstring				
50/50 POZ	200.00	EA	8.25	1,649.90 T
60/40 POZ	50.00	EA	9.00	449.97 T
Cello-flake	50.00	EA	2.77	138.74 T
Cal-Set	840.00	EA	0.56	472.47 T
FLA-322	84.00	EA	5.62	472.47 T
KCL Potassium Chloride	453.00	EA	1.12	509.60 T
Gilsonite	1,200.00	EA	0.50	602.97 T
Mud Flush	1,000.00	EA	0.64	644.96 T
CS-1L KCL Substitute	5.00	EA	26.25	131.24 T
Latch Down Plug & Baffle 5 1/2" (Blue)	1.00	EA	299.98	299.98
Auto Fill Float Shoe 5 1/2" (Blue)	1.00	EA	269.98	269.98
Turbolizer 5 1/2" (Blue)	12.00	EA	82.50	989.94
5 1/2" Basket (Blue)	2.00	EA	217.49	434.97
Unit Mileage Charge-Pickups, Vans & Cars	30.00	HR	3.19	95.62
Heavy Equipment Mileage	60.00	MI	5.25	314.98
Proppant and Bulk Delivery Charges	317.00	MI	1.20	380.38
Depth Charge; 4001-5000'	1.00	HR	1,889.92	1,889.92
Blending & Mixing Service Charge	250.00	MI	1.05	262.48
Plug Container Utilization Charge	1.00	EA	187.49	187.49
Supervisor	1.00	HR	131.24	131.24

PLEASE REMIT TO:	SEND OTHER CORRESPONDENCE TO:	SUB TOTAL	10,329.30
BASIC ENERGY SERVICES, LP	BASIC ENERGY SERVICES, LP	TAX	370.28
PO BOX 841903	PO BOX 10460	INVOICE TOTAL	10,699.58
DALLAS, TX 75284-1903	MIDLAND, TX 79702		



10244 NE Hwy. 61
 P.O. Box 8613
 Pratt, Kansas 67124
 Phone 620-672-1201

FIELD SERVICE TICKET
 1718 03634 A

DATE _____ TICKET NO. _____

DATE OF JOB: 3-17-11		DISTRICT: KANSAS		NEW WELL <input checked="" type="checkbox"/> OLD WELL <input type="checkbox"/>		PROD <input type="checkbox"/> INJ <input type="checkbox"/> WDW <input type="checkbox"/>		CUSTOMER ORDER NO.:		
CUSTOMER: Strata Exploration				LEASE: Heft				WELL NO. #1-32		
ADDRESS:				COUNTY: Kiowa 32-27-18				STATE: KANSAS		
CITY:				SERVICE CREW: A. Werth, J. Melson, Hunter J. R.						
AUTHORIZED BY:				JOB TYPE: 5 1/2" L.S.				C.N.W.		
EQUIPMENT#	HRS	EQUIPMENT#	HRS	EQUIPMENT#	HRS	TRUCK CALLED	DATE	AM/PM	TIME	
28443 P.U. 1							3-17-11	AM	7:00	
33708-20920 1						ARRIVED AT JOB	3-17-11	AM	1:30	
19832-19862 1						START OPERATION	3-17-11	AM	4:00	
						FINISH OPERATION	3-17-11	AM	5:00	
						RELEASED	3-17-11	AM	6:00	
						MILES FROM STATION TO WELL: 30-miles				

CONTRACT CONDITIONS: (This contract must be signed before the job is commenced or merchandise is delivered).

The undersigned is authorized to execute this contract as an agent of the customer. As such, the undersigned agrees and acknowledges that this contract for services, materials, products, and/or supplies includes all of and only those terms and conditions appearing on the front and back of this document. No additional or substitute terms and/or conditions shall become a part of this contract without the written consent of an officer of Basic Energy Services LP.

SIGNED: _____
 (WELL OWNER, OPERATOR, CONTRACTOR OR AGENT)

ITEM/PRICE REF. NO.	MATERIAL, EQUIPMENT AND SERVICES USED	UNIT	QUANTITY	UNIT PRICE	\$ AMOUNT
CP104	50/50 P02	SK	200		\$ 2,300.00
CP103	60/40 P02	SK	50		\$ 600.00
CC102	cell FLAKE	lb	50		\$ 185.00
CC113	cal set	lb	840		\$ 630.00
CC129	FIA-322	lb	84		\$ 630.00
C700	KCL Potassium chloride	lb	453		\$ 679.50
CC201	Gilsonite	lb	1200		\$ 804.00
CF607	Latch down Plug + Baffle 5 1/2" Blue	EA	1		\$ 400.00
CF1251	Auto Fill Float Shoe 5 1/2" Blue	EA	1		\$ 360.00
CF1651	Turbolizer 5 1/2" Blue	EA	12		\$ 1320.00
CF1901	5 1/2" Basket Blue	CP	2		\$ 580.00
CC151	mud Flush	gal	1000		\$ 860.00
C704	CS-16 KCL Sub.	gal	5		\$ 175.00

CHEMICAL / ACID DATA:			

SERVICE & EQUIPMENT	%TAX ON \$	
MATERIALS	%TAX ON \$	
TOTAL		

SERVICE REPRESENTATIVE: Allen F. Ward
 THE ABOVE MATERIAL AND SERVICE ORDERED BY CUSTOMER AND RECEIVED BY: [Signature]
 (WELL OWNER OPERATOR CONTRACTOR OR AGENT)

FIELD SERVICE ORDER NO. _____



10244 NE Hwy. 61
P.O. Box 8613
Pratt, Kansas 67124
Phone 620-672-1201

FIELD SERVICE TICKET

1718 ~~03635~~ A

Continuation of

DATE TICKET NO. 03634A

DATE OF JOB: 3-17-11	DISTRICT: Kansas	NEW WELL <input checked="" type="checkbox"/>	OLD WELL <input type="checkbox"/>	PROD <input type="checkbox"/>	INJ <input type="checkbox"/>	WDW <input type="checkbox"/>	CUSTOMER ORDER NO.:			
CUSTOMER: Strata Exploration	LEASE: Neft	WELL NO. 1-32								
ADDRESS:	COUNTY: Kiowa 32-27-18	STATE: KANSAS								
CITY:	STATE:	SERVICE CREW: A. Werth, J. Melson, Hunter, J. [unclear]								
AUTHORIZED BY:	JOB TYPE: 5 1/2" L.S. [unclear]									
EQUIPMENT#	HRS	EQUIPMENT#	HRS	EQUIPMENT#	HRS	TRUCK CALLED	DATE	AM	PM	TIME
#28443 P.U.	1						3-17-11			7:00
#33708-20920	1					ARRIVED AT JOB	3-17-11			1:30
#19832-19862	1					START OPERATION	3-17-11			4:00
						FINISH OPERATION	3-17-11			5:00
						RELEASED	3-17-11			6:00
						MILES FROM STATION TO WELL	30-miles			

CONTRACT CONDITIONS: (This contract must be signed before the job is commenced or merchandise is delivered).

The undersigned is authorized to execute this contract as an agent of the customer. As such, the undersigned agrees and acknowledges that this contract for services, materials, products, and/or supplies includes all of and only those terms and conditions appearing on the front and back of this document. No additional or substitute terms and/or conditions shall become a part of this contract without the written consent of an officer of Basic Energy Services LP.

SIGNED: _____
(WELL OWNER, OPERATOR, CONTRACTOR OR AGENT)

ITEM/PRICE REF. NO.	MATERIAL, EQUIPMENT AND SERVICES USED	UNIT	QUANTITY	UNIT PRICE	\$ AMOUNT
E100	unit mileage charge Pickup	mi	30		\$ 127.50
E101	HEAVY Equip mileage	mi	60		\$ 420.00
E113	Bulk Delivery Charge	Tm	317		\$ 506.40
CF205	Depth Charge 4001-5000'	4-hrs	1		\$ 2520.00
CF240	Blending & Mixing Service chg.	sk	250		\$ 350.00
CF304	Plug Container Utilization chg.	Job	1		\$ 250.00
S003	Service Supervisor first 8hrs on loc.	EA	1		\$ 175.00

CHEMICAL / ACID DATA:	SUB TOTAL		10,329.30
	SERVICE & EQUIPMENT	%TAX ON \$	
	MATERIALS	%TAX ON \$	
TOTAL			

SERVICE REPRESENTATIVE: [Signature]
THE ABOVE MATERIAL AND SERVICE ORDERED BY CUSTOMER AND RECEIVED BY: [Signature]
FIELD SERVICE ORDER NO. _____ (WELL OWNER OPERATOR CONTRACTOR OR AGENT)

Customer <i>Strata Exploration</i>		Lease No.		Date	
Lease <i>Neft</i>		Well # <i>1-32</i>		<i>3-17-11</i>	
Field Order # <i>03634A</i>	Station <i>Pratt</i>	Casing <i>5 1/2"</i>	Depth <i>4824</i>	County <i>Kiowa</i>	State <i>KANS.</i>
Type Job <i>5 1/2" Long String</i>			Formation <i>4826 DTD</i>	Legal Description <i>37-27-18</i>	

PIPE DATA		PERFORATING DATA		FLUID USED		TREATMENT RESUME		
Casing Size <i>5 1/2"</i>	Tubing Size	Shots/Ft		Acid	RATE	PRESS	ISIP	
Depth <i>4824</i>	Depth	From	To	Pre Pad	Max		5 Min.	
Volume <i>114 1/2</i>	Volume	From	To	Pad	Min		10 Min.	
Max Press <i>1500</i>	Max Press	From	To	Frac	Avg		15 Min.	
Well Connection <i>PC</i>	Annulus Vol.	From	To		HHP Used		Annulus Pressure	
Plug Depth <i>4810</i>	Packer Depth	From	To	Flush	Gas Volume		Total Load	

Customer Representative <i>George Payne</i>				Station Manager <i>scotty</i>				Treater <i>Allen F. Worth</i>			
Service Units	<i>2844</i>	<i>33708</i>	<i>20920</i>	<i>19832</i>	<i>19862</i>						
Driver Names	<i>Worth Joe</i>	<i>Melson JR</i>	<i>Hunter Jarod</i>								

Time	Casing Pressure	Tubing Pressure	Bbls. Pumped	Rate	Service Log
<i>11:30 AM</i>					<i>on loc. Discuss Safety, Setup, Plan Job</i>
<i>12:40</i>	<i>start pipe</i>				<i>Rig up to Run 5 1/2" casing. 15.5"</i>
					<i>Shoe Joint. 13.62' w/ Float Shoe</i>
					<i>+ L.D. Baffle in collar cent. 3-4-5-6</i>
					<i>- 9-11-13-17-20-23-26-29</i>
					<i>Basket - 10-24</i>
<i>1:40</i>					<i>Cir. Hole Joint #60</i>
<i>2:15</i>					<i>cont. Running casing.</i>
<i>2:15</i>					<i>Pipe @ 4824' Hookup + cir + Recip.</i>
<i>4:15</i>	<i>200 #</i>		<i>24</i>	<i>5</i>	<i>Pump 24 BBLs mud Flush</i>
			<i>5</i>	<i>5</i>	<i>Pump 5 BBLs H₂O spacer</i>
				<i>6</i>	<i>mix + Pump 200sk 50/50 Poz @ 14 1/2 gal</i>
			<i>48</i>		<i>Finish mix, wash out pump + line</i>
				<i>6</i>	<i>Drop L.D. Plug + start Disp + Recip.</i>
<i>5:00 #</i>	<i>500 #</i>			<i>5</i>	<i>caught lift PST w/ 86 BBLs out</i>
<i>5:00 #</i>	<i>1500 #</i>		<i>114 1/2</i>	<i>4</i>	<i>Plug down.</i>
					<i>Release PSI. OK</i>
					<i>Plug R.H. + M.H. w/ 50sk</i>
					<i>60/40 Poz 2% gel</i>
					<i>washup + Rackup Equip</i>
					<i>Job complete</i>
<i>6:00</i>					<i>Thanks Allen Joe, JR, Jarod.</i>

Conservation Division
Finney State Office Building
130 S. Market, Rm. 2078
Wichita, KS 67202-3802



phone: 316-337-6200
fax: 316-337-6211
<http://kcc.ks.gov/>

Thomas E. Wright, Chairman
Ward Loyd, Commissioner

Corporation Commission

Sam Brownback, Governor

May 13, 2011

John R Kinney
Strata Exploration, Inc.
PO BOX 401
FAIRFIELD, IL 62837-0401

Re: ACO1
API 15-097-21685-00-00
Heft 1-32
SW/4 Sec.32-27S-18W
Kiowa County, Kansas

Dear Production Department:

We are herewith requesting that the Well Completion Form ACO-1 and attached information for the subject well be held confidential for a period of two years.

Should you have any questions or need additional information regarding subject well, please contact our office.

Respectfully,
John R Kinney