



KANSAS CORPORATION COMMISSION 1055252
OIL & GAS CONSERVATION DIVISION

Form ACO-1

June 2009

Form Must Be Typed
Form must be Signed
All blanks must be Filled

WELL COMPLETION FORM
WELL HISTORY - DESCRIPTION OF WELL & LEASE

OPERATOR: License # _____

Name: _____

Address 1: _____

Address 2: _____

City: _____ State: _____ Zip: _____ + _____

Contact Person: _____

Phone: (_____) _____

CONTRACTOR: License # _____

Name: _____

Wellsite Geologist: _____

Purchaser: _____

Designate Type of Completion:

- New Well Re-Entry Workover
- Oil WSW SWD SIOW
- Gas D&A ENHR SIGW
- OG GSW Temp. Abd.
- CM (Coal Bed Methane)
- Cathodic Other (Core, Expl., etc.): _____

If Workover/Re-entry: Old Well Info as follows:

Operator: _____

Well Name: _____

Original Comp. Date: _____ Original Total Depth: _____

- Deepening Re-perf. Conv. to ENHR Conv. to SWD
- Conv. to GSW
- Plug Back: _____ Plug Back Total Depth _____
- Commingled Permit #: _____
- Dual Completion Permit #: _____
- SWD Permit #: _____
- ENHR Permit #: _____
- GSW Permit #: _____

Spud Date or Recompletion Date Date Reached TD Completion Date or Recompletion Date

API No. 15 - _____

Spot Description: _____

_____ - _____ - _____ Sec. _____ Twp. _____ S. R. _____ East West

_____ Feet from North / South Line of Section

_____ Feet from East / West Line of Section

Footages Calculated from Nearest Outside Section Corner:

- NE NW SE SW

County: _____

Lease Name: _____ Well #: _____

Field Name: _____

Producing Formation: _____

Elevation: Ground: _____ Kelly Bushing: _____

Total Depth: _____ Plug Back Total Depth: _____

Amount of Surface Pipe Set and Cemented at: _____ Feet

Multiple Stage Cementing Collar Used? Yes No

If yes, show depth set: _____ Feet

If Alternate II completion, cement circulated from: _____

feet depth to: _____ w/ _____ sx cmt.

Drilling Fluid Management Plan

(Data must be collected from the Reserve Pit)

Chloride content: _____ ppm Fluid volume: _____ bbls

Dewatering method used: _____

Location of fluid disposal if hauled offsite: _____

Operator Name: _____

Lease Name: _____ License #: _____

Quarter _____ Sec. _____ Twp. _____ S. R. _____ East West

County: _____ Permit #: _____

AFFIDAVIT

I am the affiant and I hereby certify that all requirements of the statutes, rules and regulations promulgated to regulate the oil and gas industry have been fully complied with and the statements herein are complete and correct to the best of my knowledge.

Submitted Electronically

KCC Office Use ONLY

- Letter of Confidentiality Received
Date: _____
- Confidential Release Date: _____
- Wireline Log Received
- Geologist Report Received
- UIC Distribution
- ALT I II III Approved by: _____ Date: _____



Operator Name: _____ Lease Name: _____ Well #: _____

Sec. _____ Twp. _____ S. R. _____ East West County: _____

INSTRUCTIONS: Show important tops and base of formations penetrated. Detail all cores. Report all final copies of drill stems tests giving interval tested, time tool open and closed, flowing and shut-in pressures, whether shut-in pressure reached static level, hydrostatic pressures, bottom hole temperature, fluid recovery, and flow rates if gas to surface test, along with final chart(s). Attach extra sheet if more space is needed. Attach complete copy of all Electric Wire-line Logs surveyed. Attach final geological well site report.

Drill Stem Tests Taken <input type="checkbox"/> Yes <input type="checkbox"/> No <i>(Attach Additional Sheets)</i> Samples Sent to Geological Survey <input type="checkbox"/> Yes <input type="checkbox"/> No Cores Taken <input type="checkbox"/> Yes <input type="checkbox"/> No Electric Log Run <input type="checkbox"/> Yes <input type="checkbox"/> No Electric Log Submitted Electronically <input type="checkbox"/> Yes <input type="checkbox"/> No <i>(If no, Submit Copy)</i> List All E. Logs Run: _____	<input type="checkbox"/> Log Formation (Top), Depth and Datum <input type="checkbox"/> Sample Name Top Datum
---	---

CASING RECORD <input type="checkbox"/> New <input type="checkbox"/> Used							
Report all strings set-conductor, surface, intermediate, production, etc.							
Purpose of String	Size Hole Drilled	Size Casing Set (In O.D.)	Weight Lbs. / Ft.	Setting Depth	Type of Cement	# Sacks Used	Type and Percent Additives

ADDITIONAL CEMENTING / SQUEEZE RECORD				
Purpose:	Depth Top Bottom	Type of Cement	# Sacks Used	Type and Percent Additives
_____ Perforate _____ Protect Casing _____ Plug Back TD _____ Plug Off Zone				

Shots Per Foot	PERFORATION RECORD - Bridge Plugs Set/Type Specify Footage of Each Interval Perforated	Acid, Fracture, Shot, Cement Squeeze Record <i>(Amount and Kind of Material Used)</i>	Depth

TUBING RECORD: Size: _____ Set At: _____ Packer At: _____ Liner Run: Yes No

Date of First, Resumed Production, SWD or ENHR. _____ Producing Method: Flowing Pumping Gas Lift Other *(Explain)* _____

Estimated Production Per 24 Hours	Oil Bbls.	Gas Mcf	Water Bbls.	Gas-Oil Ratio	Gravity
-----------------------------------	-----------	---------	-------------	---------------	---------

DISPOSITION OF GAS: <input type="checkbox"/> Vented <input type="checkbox"/> Sold <input type="checkbox"/> Used on Lease <i>(If vented, Submit ACO-18.)</i>	METHOD OF COMPLETION: <input type="checkbox"/> Open Hole <input type="checkbox"/> Perf. <input type="checkbox"/> Dually Comp. <input type="checkbox"/> Commingled <i>(Submit ACO-5)</i> <input type="checkbox"/> Other <i>(Specify)</i> _____ <i>(Submit ACO-4)</i>	PRODUCTION INTERVAL: _____ _____
---	--	--

LITHOLOGY STRIP LOG

WellSight Systems

Scale 1:240 (5"=100') Imperial

Well Name: #2-5 Heft
Location: 660' FNL & 710' FEL, Sec. 5-T28S-R18W, Kiowa Co., KS.
Licence Number: 15-097-21688-0000 Region: Einsel Field Ext.
Spud Date: 3/18/2011 Drilling Completed: 3/27/2011
Surface Coordinates: 660' FNL & 710' FEL, Sec. 5-T28S-R18W

Bottom Hole Same as above
Coordinates:
Ground Elevation (ft): 2208' K.B. Elevation (ft): 2217'
Logged Interval (ft): 3400' To: 4863' Total Depth (ft): 4863'
Formation: Kinderhook at Total Depth
Type of Drilling Fluid: Freshwater/Gel to 3370'; Chemical Gel 3370' to 4863'.

Printed by MUD.LOG from WellSight Systems 1-800-447-1534 www.WellSight.com

OPERATOR

Company: Strata Exploration, Inc.
Address: P.O. Box 401
Fairfield, IL. 62837-0401

GEOLOGIST

Name: Jon D. Christensen
Company: Consulting Petroleum Geologist
Address: 9002 W. Silver Hollow St.
Wichita, KS. 67205-8856

Cores

None Taken

DSTs

DST #1(Lansing 'A') 4218' - 4236' Test Times 15"-45"-45"-90"

IFP Strong Blow BOB/8 Sec., FFP Fair to Strong Blow BOB/45 Min., No Gas to Surface, no Blowback on SI's; REC: 410' Gas in Pipe, 25' Drlg. Mud, no oil, no Water; IFP 19-27#, ISIP 216, FFP 24-39#, FSIP 308#, IHP 2072#, FHP 2003#, BHT 110 Deg. F.

DST #2(Mississippi Chert) 4792' - 4822' Test Times 11"-126" IFP Strong Blow BOB/Immed. Gas to Surface in 4 Min - no Gauge available; Flowed Oil to Surface in 10 Min. Shut in tool. Unloaded oil and gas - Drop Bar - Reverse Circulate/Transfer Oil into Tanker truck; REC: 4624' CGO(25%G, 75%O), 124' GHOCM(10%G, 30%O, 60%M), No Water; IFP 1055 - 1215#, ISIP 1489#, no FFP or FSIP; IHP 2410#, FHP 2359#, BHT 130 Deg. F.

DST #3(Mississippi Chert) 4822' - 4837' Test Times 15"-30"-15"-30" (NOTE: Slowly losing fluid during the test) IFP Strong Blow BOB/38 Sec., Gas To Surface 14 Min. into ISI; FFP GTS throughout - no Gauge available; REC: 2842' Total Fluid: 315' CGO(30%G, 70%O), 196' OSpkdSaltyM, 315' SOCW, 2006' SW, CI Est. 68,000, Mud 2800; IFP 375-773#, ISIP 1498#, FFP 792-1108#, FSIP 1498#, IHP 2341#, FHP 2312#, BHT 129 Deg. F.

Comments

3/18/11 MIRU Sterling Drilling Co. Rig #4, Spud at 1:45 PM.; 3/19/11 TD. 525' - WOC; 3/20/11 Drilling at 1800; 3/21/11 Drilling at 2900'; 3/22/11 Drilling at 3530'; 3/23/11 Drilling at 4100'; 3/24/11 TD. 4236' - TIH after DST #1; 3/25/11 Drilling at 4610'; 3/26/11 TD. 4822' - DST #2; 3/27/11 TD. 4837' - TOH w/DST #3; reached TD. at 2:35 PM; 3/28/11 RTD. 4863', LTD. 4860' - CCH for LDDP.

Set 8 5/8"(23#) Surface Casing at 523' w/400 sx/(Basic Energy Services). Cement Did Circulate. PD. 2:30 AM. 3/19/11.


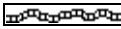

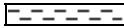






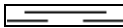
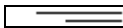



Surveys: 0.75 Degree at 525'(Surface Casing); 0.5 Deg. at 4236'(DST #1); 0.5 Deg. at 4822'(DST #2).

Pipe Strap at 4236'(DST #1): Strap 0.70' Short to the Board, no correction made to the Board.

After review of the Halliburton LOGS, DST data, structural position and positive shows of commercial amounts of hydrocarbons, the operator elected to set new 5 1/2"(15.5#) Production Casing for completion in the Mississippi Chert.

LOG TOPS:

ROCK TYPES

 Anhy  Bent  Brec  Cht	 Clyst  Coal  Congl  Dol	 Gyp  Igne  Lmst  Meta	 Mrlst  Salt  Shale  Shcol	 Shgy  Sltst  Ss  Till
---	---	---	---	---

ACCESSORIES

- MINERAL**
- Anhy
 - Arggrn
 - Arg
 - Bent
 - Bit
 - Breclfrag
 - Calc
 - Carb
 - Chtdk
 - Chtlt
 - Dol
 - Feldspar
 - Ferrpel
 - Ferr
 - Glau

- Gyp
- Hvymin
- Kaol
- Marl
- Minxl
- Nodule
- Phos
- Pyr
- Salt
- Sandy
- Silt
- Sil
- Sulphur
- Tuff

- FOSSIL**
- Algae
 - Amph
 - Belm
 - Bioclst
 - Brach
 - Bryozoa
 - Cephal
 - Coral
 - Crin
 - Echin
 - Fish
 - Foram
 - Fossil
 - Gastro
 - Oolite

- Ostra
- Pelec
- Pellet
- Pisolite
- Plant
- Strom

- STRINGER**
- Anhy
 - Arg
 - Bent
 - Coal
 - Dol
 - Gyp
 - Ls
 - Mrst

- Siltstrg
- Ssstrg

- TEXTURE**
- Boundst
 - Chalky
 - Cryxln
 - Earthy
 - Finexln
 - Grainst
 - Lithogr
 - Microxln
 - Mudst
 - Packst
 - Wackest

OTHER SYMBOLS

- POROSITY**
- Earthy
 - Fenest
 - Fracture
 - Inter
 - Moldic
 - Organic
 - Pinpoint

- Vuggy
- SORTING**
- Well
 - Moderate
 - Poor

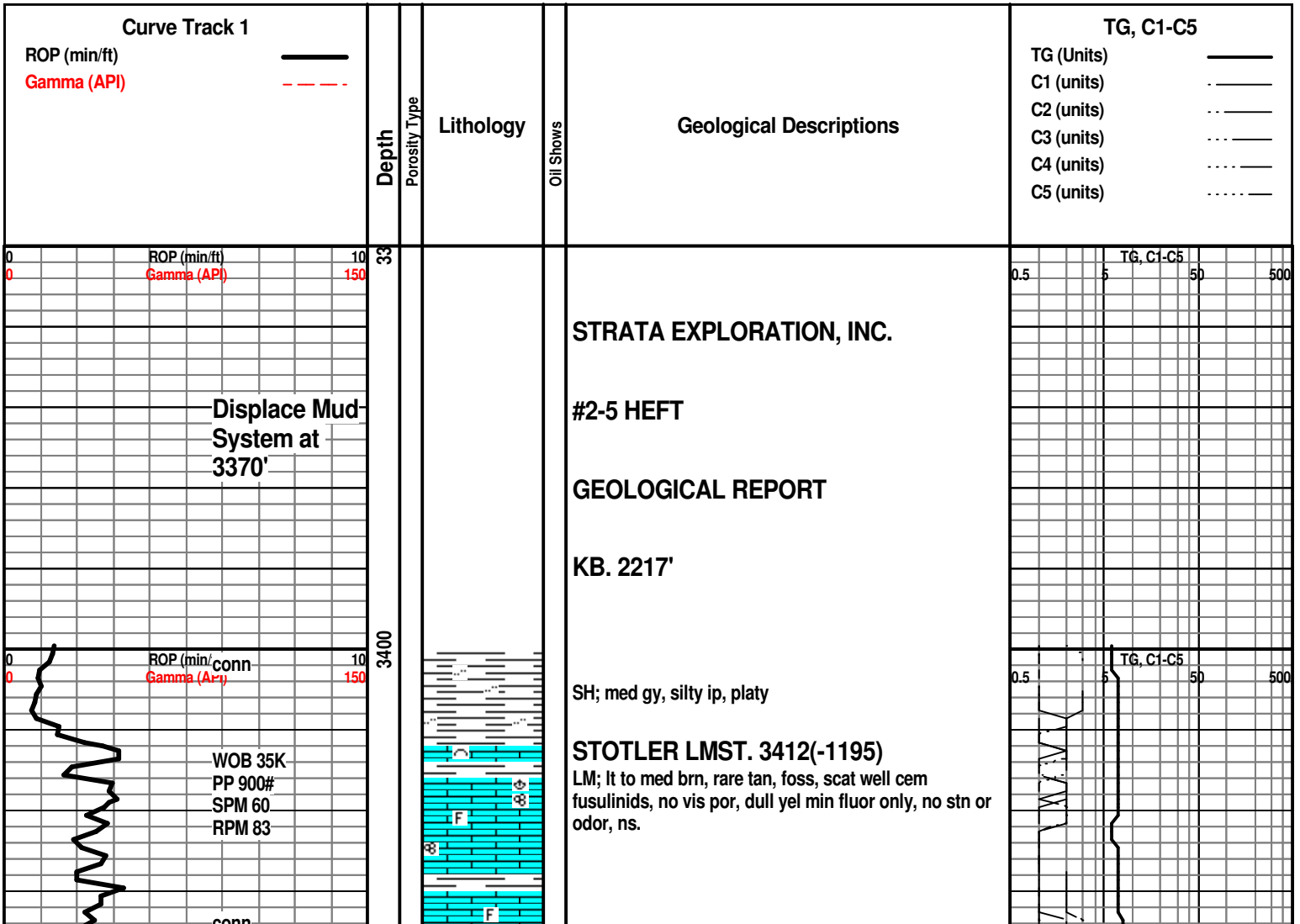
- ROUNDING**
- Rounded
 - Subrnd
 - Subang
 - Angular

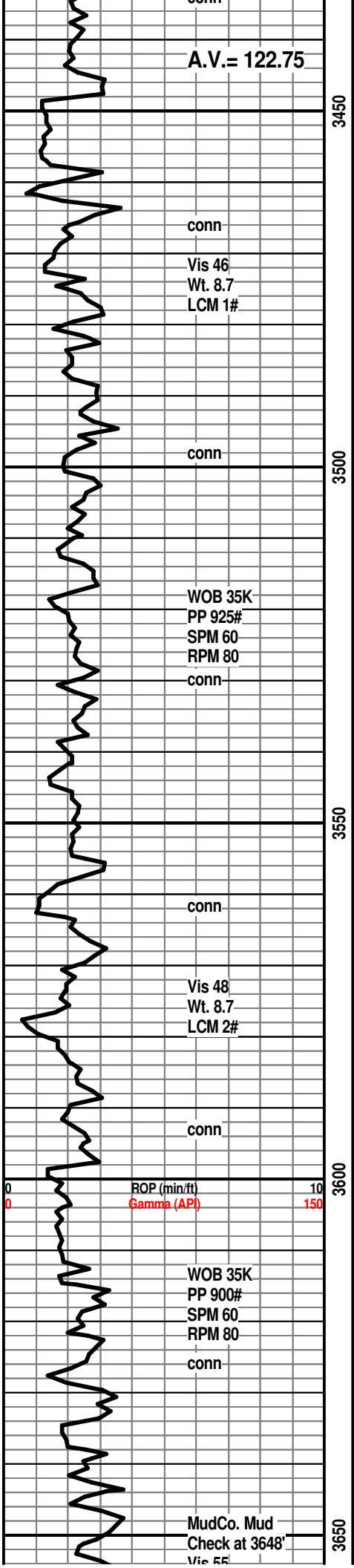
- OIL SHOW**
- Even

- Spotted
- Ques
- Dead

- INTERVAL**
- Core
 - Dst

- EVENT**
- Rft
 - Sidewall





A.V. = 122.75

conn
Vis 46
Wt. 8.7
LCM 1#

conn

WOB 35K
PP 925#
SPM 60
RPM 80
conn

conn

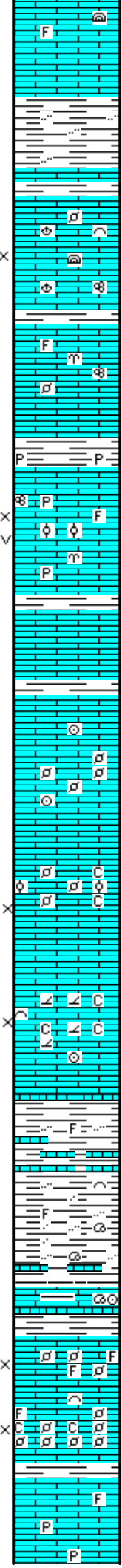
Vis 48
Wt. 8.7
LCM 2#

conn

ROP (min/ft) 10
Gamma (API) 150

WOB 35K
PP 900#
SPM 60
RPM 80
conn

MudCo. Mud
Check at 3648'
Vis 55



LM; tan to lt brn, most blocky, dense, foss ip, scat dull yel min fluor, no stn or odor, ns.

SH; med gy to grn, fiss, flakey ip, most smooth, occ silty - mica ip.

LM; tan to off wh, buff, f to med xln, scat poor to fair interxln por, occ foss - scat fusulinids, dull yel min fluor, no stn, no gas kick, ns.

LM; lt to med brn, hd, most dense, scat foss mat, blocky, no vis por, no stn or odor, ns.

SH; med gy to brn, firm, platy, occ pyr

LM; lt to med gy, gy brn, hd, occ well cem foss mat, pyr ip, trc poor interpart and small vug por, dull yel min fluor, no stn or odor, ns.

LM; off wh, tan to buff, foss to finely pelletal, fair to poor interpart por, lt yel min fluor, no stn or odor, no gas kick, ns.

LM; off wh, wh, foss, some v. soft pelletal lmst w/chalky mtx, fair to gd interpart por, lt to med yel min fluor, no stn or odor, ns.

LM; wh to off wh, fxl to sucrosic text, partly dolom gd interxln por, scat foss mat ip, occ soft chalky mtx, no stn or odor, med yel min fluor, ns.

SH; med gy grn, lmy ip, v. firm

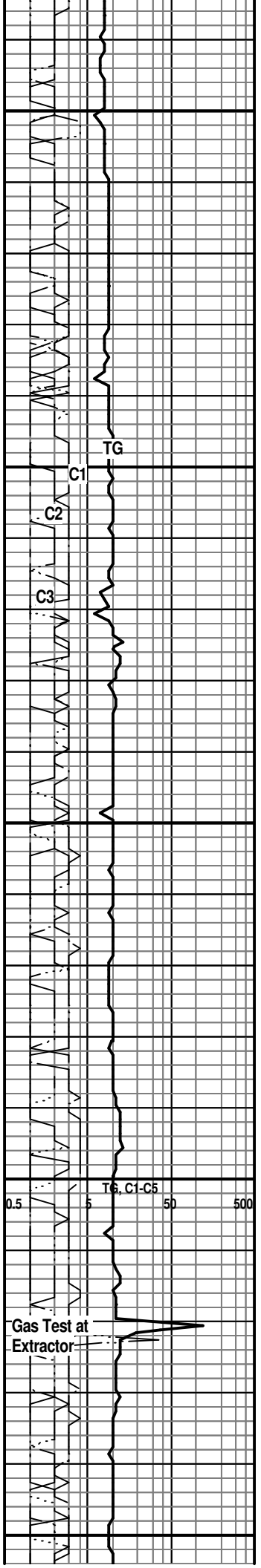
SH; med to dk gy, firm, silty to occ sandy, mica ip, foss

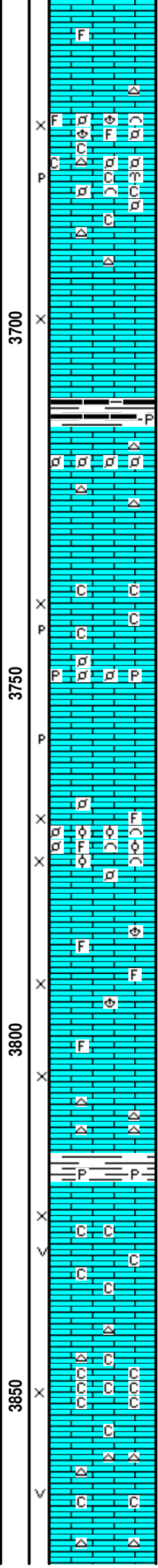
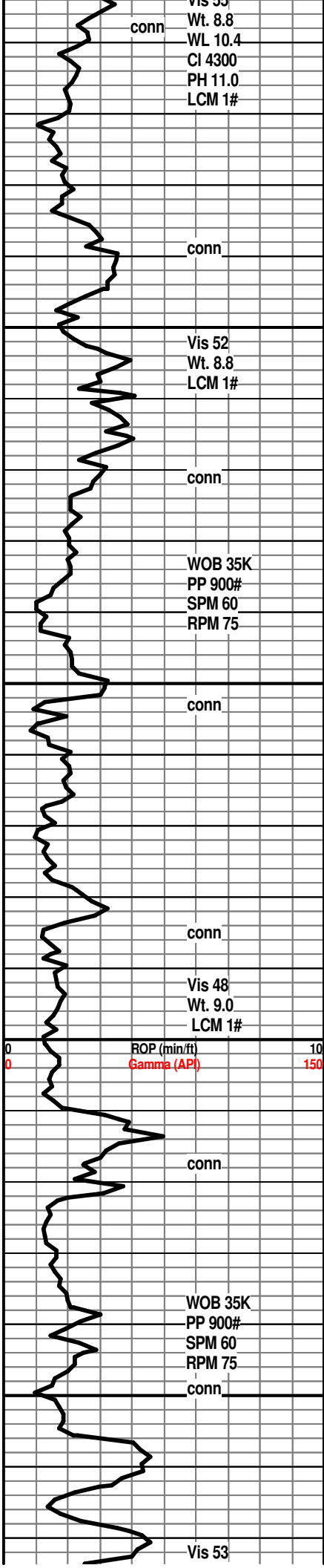
HOWARD 3615(-1398)

LM; med gy brn, argil, blocky, foss ip, tite

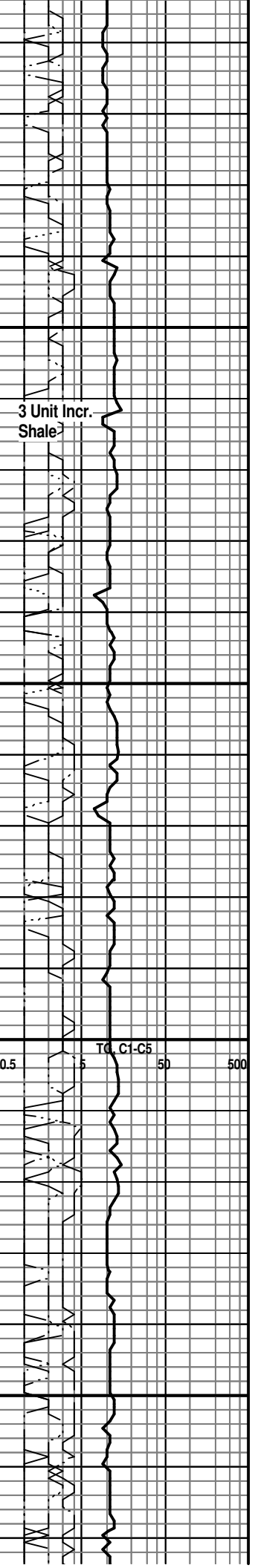
LM; tan to lt brn, off wh, foss ip, scat cse foss frags, finely pelletal ip, minor soft chalky mtx, poor to fair interpart por, dull yel min fluor, no vis stn, no odor, ns.

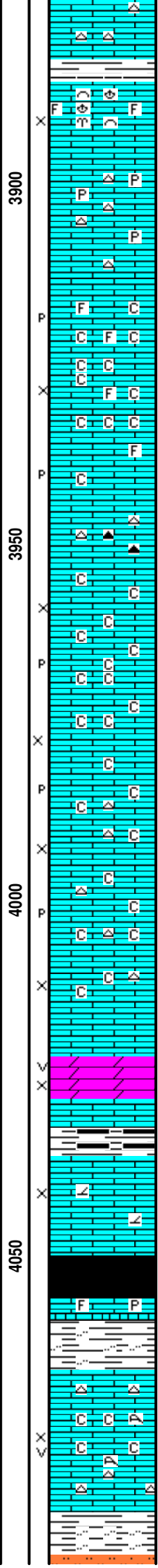
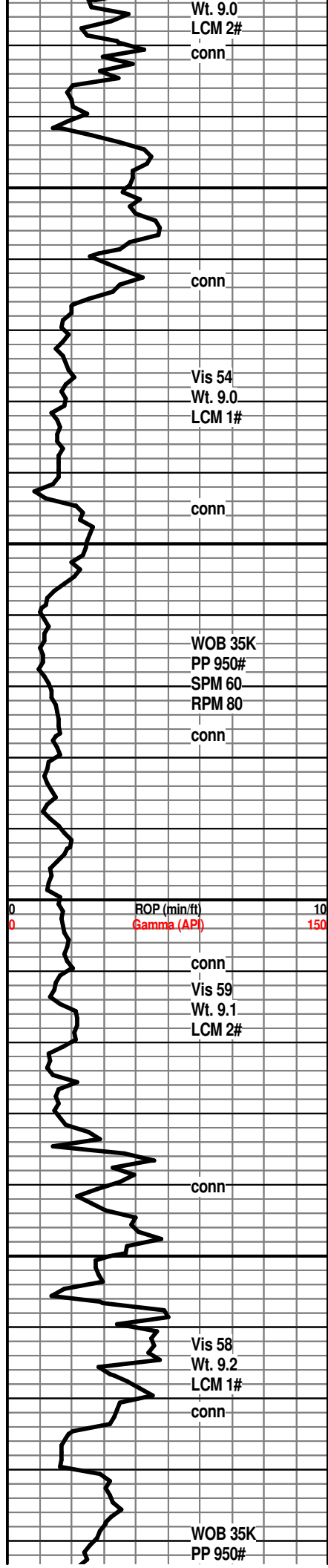
LM; wh to off wh, tan, most dense, scat foss mat, rarely





pyr, no vis por, ns.
 LM; tan to cream, buff, highly foss - abnt frags, gd interpart & p-p por, minor chalky mtx, lt yel min fluor, no stn or odor, rare gy foss cht, ns.
 LM; lt brn, gran to med xln, gd interxln por, lt to occ med yel fluor, no stn or odor, no gas kick, ns.
 SH; dk gy, occ blk, fiss to flakey, trc pyr
TOPEKA 3714(-1497)
 LM; tan to lt brn, foss ip, most well cem - small pellets, scat off wh cht, no vis por, no stn or odor, ns.
 LM; lt to med brn, tan, f to med xln, some gran text, fair interxln w/p-p por, interbdd soft chalky mtx ip, dull yel min fluor, no stn or odor, ns.
 LM; lt brn, highly foss, much foss hash, scat pellets and oolites, gd interpart por, dull yel fluor, no stn, no gas kick, ns.
 LM; off wh, tan to lt brn, most fxl, rare foss hash, scat sucrosic text lmst, gd interxln por, no stn or odor, ns.
 LM; tan to lt brn, hd, blocky, occ gy cht, tite
 SH; med gy to grn, fiss, occ pyr
 LM; lt brn, f to med xln, scat cse spar calc xtals, occ vug and interxln por, minor chalky mtx, scat lt to med yel min fluor, no stn or odor, ns.
 LM; wh to off wh, fxl, abnt soft chalky mtx, scat fair interxln por, lt to dull yel min fluor, no stn, no gas kick, ns.
 LM; wh to off wh, f to med xln, scat gd vug por in some, minor chalky mtx, dull yel min fluor, ns.





SH; med grn to gy grn, platy to splintery

LM; tan to off wh, rare lt gy, foss w/some foss hash, cse foss frags, fair interpart por, no stn or odor, no fluor, ns.

LM; lt gy to lt brn, most dense, blocky, interbdd gy to off wh cht, no vis por, minor pyr, no stn or odor, ns.

LM; wh to off wh, rare lt gy, foss to fxln, poor to fair p-p and interxln por, much soft chalky mtx, dull yel min fluor, no stn or odor, ns.

LM; tan to lt blue gy, dense, interbdd gy to blue gy cht, hd

LM; tan to wh, off wh, f to med xln, scat cse opaque spar calc xtals, pred soft chalky mtx, fair to poor vis interxln w/scat p-p por, dull yel min fluor only, no stn or odor, ns.

LM; tan to buff, rare lt brn, off wh, f to med xln, cherty ip, abnt soft chalk and chalky mtx, fair p-p and interxln por, lt yel min fluor, no stn or odor, ns.

DOL; lt brn, sucrosic, fair interxln por, trc vug por, lt yel min fluor, no stn or odor, ns.

SH; dk gy, trc blk, fiss

LM; tan to lt brn, fxln, trc sucrosic text - partly dolomitic, rarely foss, poor vis interxln por, dull yel min fluor, much dense, ns.

HEEBNER SHALE 4050(-1833)

SH; blk, carb ip, trc gas

LM; med brn, foss ip, hd, pyr

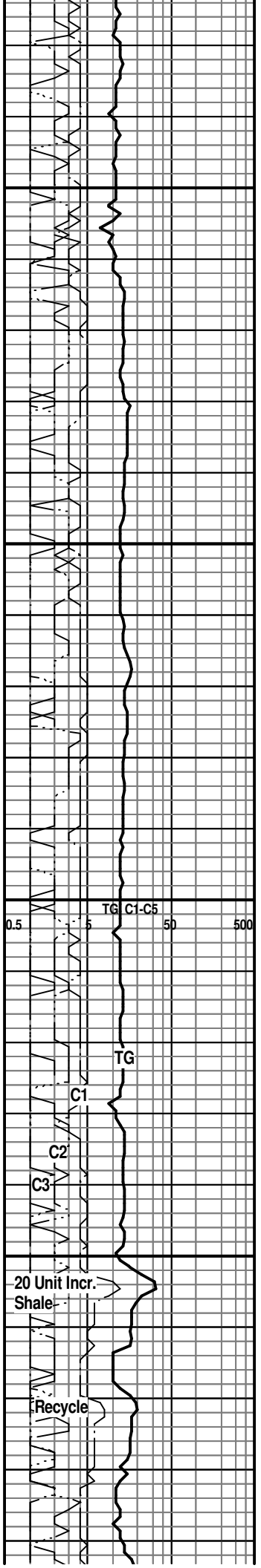
SH; grn, gy grn, silty ip.

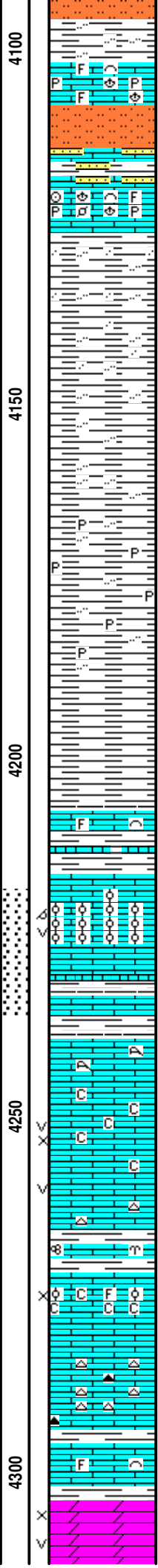
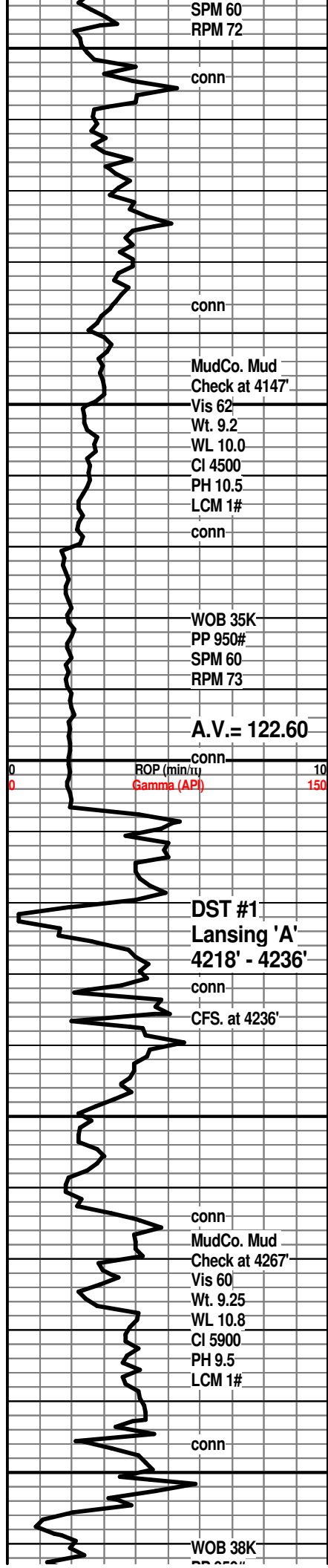
TORONTO 4066(-1849)

LM; tan to off wh, f to med xln ip, foss ip(corals), soft chalky mtx, fair to gd interxln w/occ vug por, lt yel min fluor, no stn or odor, interbdd off wh to lt gy cht, ns.

DOUGLAS SHALE 4086(-1869)

SH; lt to med gy, fiss, silty ip, firm, interbdd sltst.





LM; med to dk brn, highly foss, some dense - pyr ip, well cem foss mat, dull yel fluor, ns.

SLTST; lt gy, firm

LM; med to dk brn, gy brn, hd, foss, sandy w/interbdd hd pyr sandy lmst, tite

SH; lt to med gy, silty to sandy, firm

SH; lt to med gy, silty, firm, platy

SH; lt gy, occ med gy, dissem pyr, fiss to flakey

SH; lt to med gy, fiss, v. soft - sticky - gumbo ip, flakey

BROWN LMST. 4207(-1990)
LM; med brn, hd, micritic, occ foss, tite

LANSING 'A' 4216(-1999)
LM; tan to lt brn, foss-oolitic, well dev. med to lrg oomoldic and occ vug por, some rextalized, sev. gas bubbles vis, med yel fluor, v. faint odor, trc spotted lt brn oil stn, weak/no cut, gas show

DST #1: Lansing 'A' 4218' - 4236'

LANSING 'B' 4239(-2022)
LM; wh to off wh, foss ip, scat corals, well cem, poor/no vis por, dull yel min fluor only, ns.

LM; off wh, lt gy, med to cse xln ip, soft chalky mtx, scat lrg poorly interconn vug por, dull yel min fluor, no stn or odor, no gas kick, barren, ns.

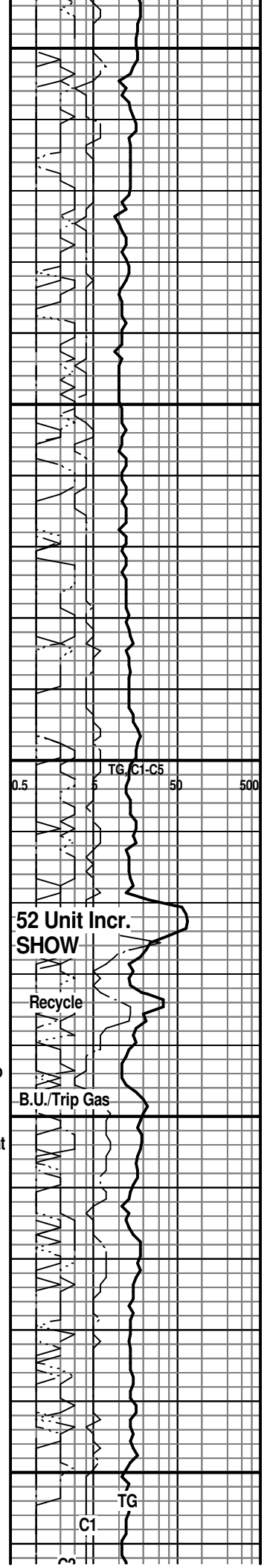
SH; grn, gy grn, fiss, interbdd hd brn foss lmst.

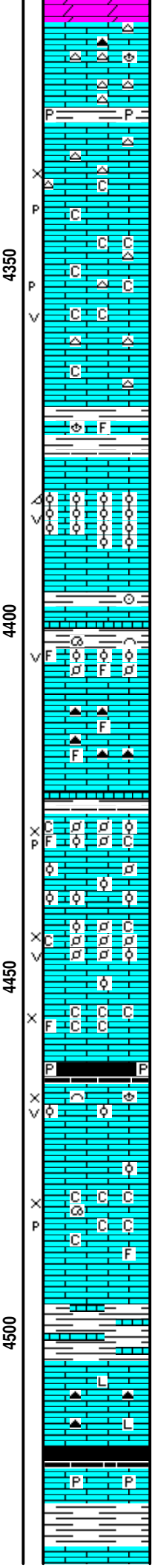
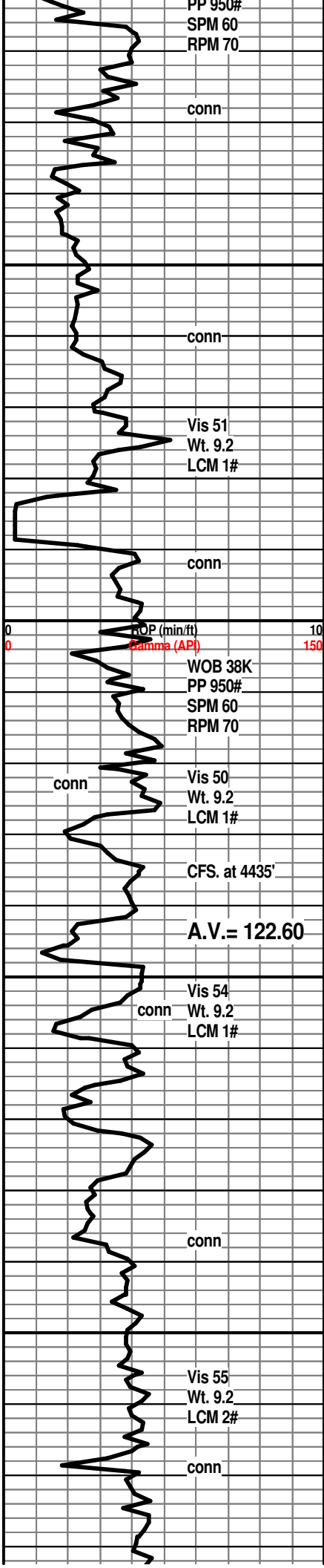
LM; off wh to tan, foss, fair interpart por, occ soft chalky mtx, dull yel min fluor, no stn or odor, ns.

LM; tan to lt brn, most dense, micritic, cherty w/gy - dk gy/smoky to tan occ foss cht, tite

LM; med to dk brn, foss, hd, blocky, tite

DOL; off wh, lt gy, tan, sucrosic to finely rhombic, gd interxln w/scat vug por, lt to med yel fluor, no stn or odor, ns.





LM; tan to lt brn, most dense, rarely foss, cherty ip, no vis por, no stn or odor, ns.

SH; med gy, fiss, occ pyr

LM; tan to cream, off wh, f to med xln, scat fair interxln w/p-p por, chalky mtx ip, most soft, dull yel min fluor, interbdd wh to off wh cht, no stn or odor, ns.

LM; tan to buff, lt gy, med to occ cse xln, spar calc xtals abnt, scat med size vug por, minor chalky mtx, occ lt gy to off wh cht, dull to lt yel min fluor, no stn odor, ns.

SH; dk gy, firm, platy

LM; med to dk brn, foss, tite

LANS/K.C. 'H' 4377(-2160)

LM; lt to med brn, oolitic, v. well dev. oomoldic and vug por, med yel min fluor, brittle/fri, no stn or odor, barren, ns.

LM; med brn, hd, scat gy to grn cht, tite

SH; med to dk gy, fiss, occ foss

LM; tan to lt brn, foss, finely oolitic ip, poor interpart por, rare small vug por, lt yel min fluor, no stn or odor, no gas kick, ns.

LM; tan to lt brn, foss ip, most micritic, blocky, cherty w/brn to smoky-dk gy cht, tite

K.C. 'I' 4427(-2210)

LM; tan to lt gy brn, foss - finely pelletal w/scat med size ooids, fair interpart and p-p por, occ chalky mtx, no stn or odor, occ spar calc, lt yel fluor, no gas kick, barren, ns.

LM; off wh, tan, finely pelletal, fair/gd interpart w/scat vug por, minor chalky - soft mtx, lt yel min fluor, no stn or odor, ns.

LM; off wh, tan, f to med xln, fair interxln por, much soft chalky mtx, dull yel min fluor, ns.

SH; blk, dk gy, fiss, pyr ip.

K.C. 'J' DENNIS 4465(-2248)

LM; tan to cream, lt brn, foss, fair interpart w/scat vug por, occ cse spar calc xtals, dull yel min fluor only, no stn or odor, no gas kick, ns.

LM; tan to buff, off wh, fxln, scat foss mat, soft chalky mtx, poor - fair interpart por, trc p-p por also, no stn or odor, no gas kick, ns.

SH; med to dk gy brn, lmy, v. firm

LM; med gy to med brn, dk brn, hd, litho, dense, scat dk gy to smoky cht, tite

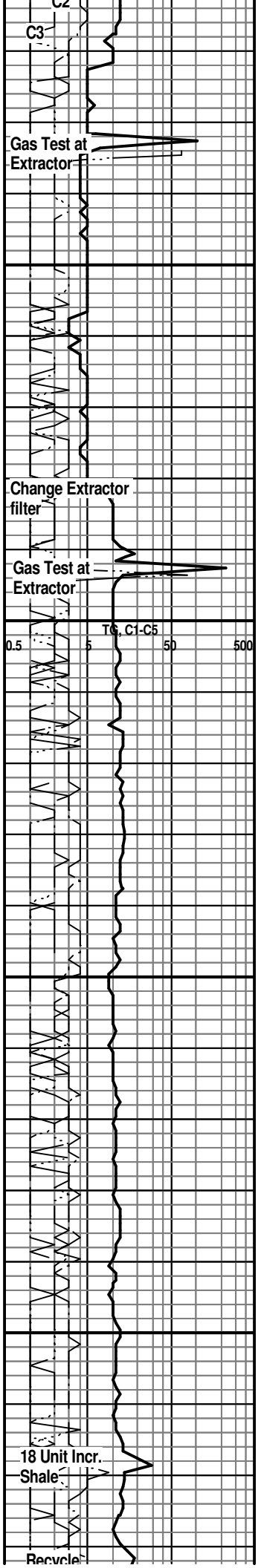
STARK SHALE 4516(-2299)

SH; blk, carb ip, brittle, gassy ip.

LM; med to dk gy, pyr, hd.

SH; dk gy, grn, firm

SWOPE 4530(-2313)



SWOP 4550(-2319)

LM; off wh, tan to buff, most dense, blocky, micritic, no vis por, no stn or odor, ns.

LM; tan to lt brn, foss, fair interpart por, scat soft chalky mtx, lt to occ med yel min fluor, no stn or gas kick, ns.

LM; med brn, gy brn, hd, blocky, micritic, tite

SH; blk, fiss, occ pyr

HERTHA 4576(-2359)

LM; tan to buff, f to med xln, occ foss pellets, gd vis interxln por, some soft chalky mtx, dull to lt yel min fluor, no stn or odor, barren, ns.

LM; med brn, hd, micritic, cherty ip, no vis por, scat lt yel min fluor, no stn or odor, ns.

LM; med to dk brn, hd, litho, dense, occ dk brn to smoky cht

BASE KANSAS CITY 4608(-2391)

LM; dk brn, v. hd, pyr ip, gritty text ip.

SH; varic: blk, grn, brn, rust red, splintery, occ foss to nodular, interbdd silty sh

PLEASANTON 4626(-2409)

LM; med brn, hd, sandy to gritty text, well cem, no vis por, no stn or odor, dull yel fluor, ns.

LM; tan to off wh, cream, buff, v. foss - pelletal w/well cem. oolites and pisolites, rare chalky mtx, lt yel min fluor, no stn or odor, no gas kick

SH; varic; pred blk, grn, gy, silty ip, much flakey

MARMATON 4656(-2439)

LM; lt gy to lt brn, pale grn tint, occ argil, hd, some nodular lmst, lt yel fluor, no stn, ns.

SH; grn, maroon, platy, interbdd hd shaly lmst.

LM; lt to med brn, most dense, interbdd pelletal to oolitic lmst, well cem, no vis por, no stn or odor, ns.

LM; tan to lt brn, buff, micritic, rarely foss, well cem, no vis por, no stn or odor, ns.

SH; dk gy, some blk, platy, w/mostly gy to brite grn waxy to fiss shales

PAWNEE 4703(-2486)

LM; lt to lt brn, blocky, litho ip, interbdd tan to amber cht, rarely foss, no vis por, no stn or odor, ns.

LM; tan to lt brn, micritic, blocky, no por, ns.

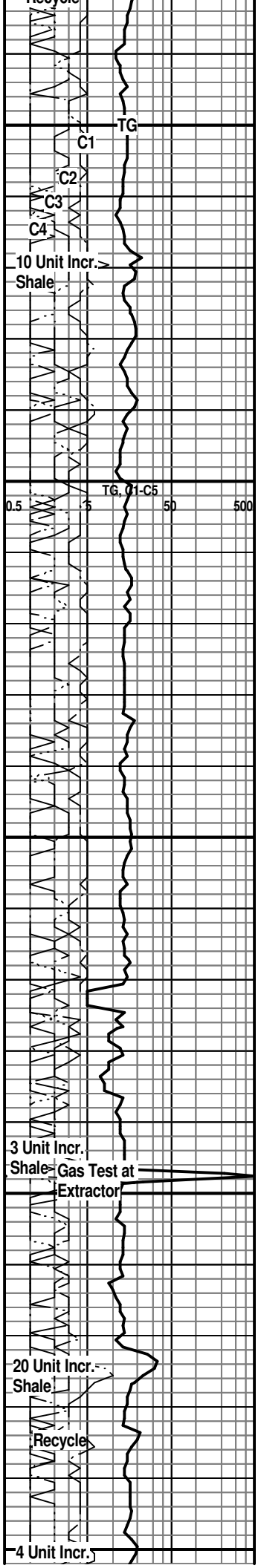
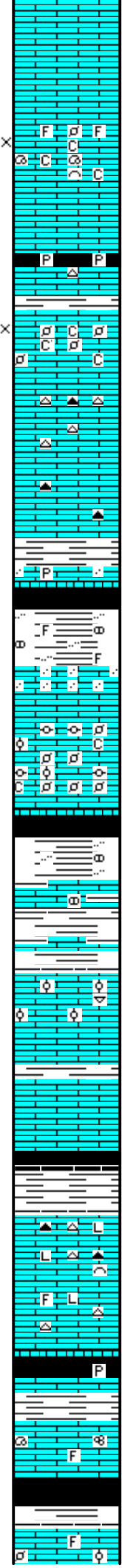
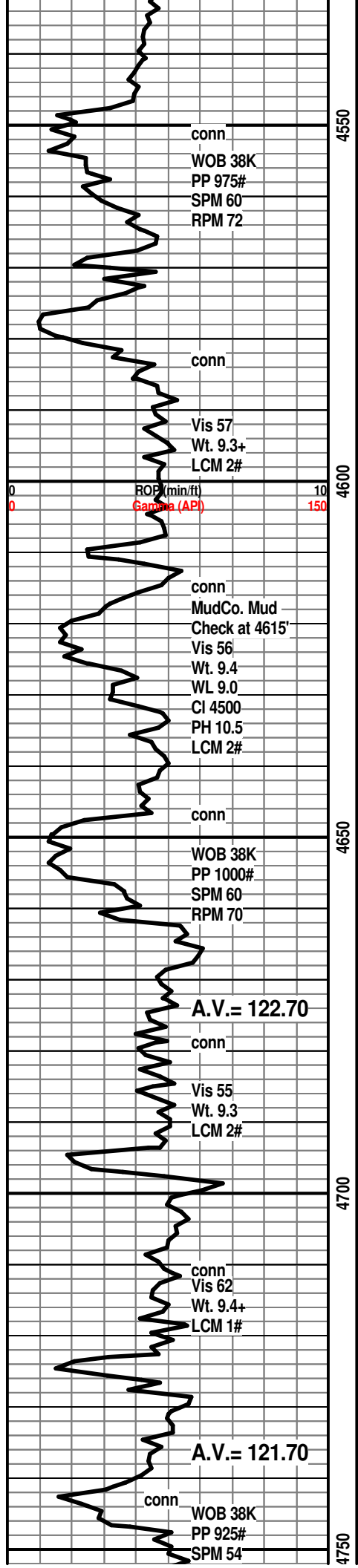
SH; blk, carb ip, gassy, trc pyr

LM; tan to buff, lt brn, scat foss mat, no vis por, some micritic, no vis por, no fluor, ns.

CHEROKEE SHALE 4740(-2523)

SH; blk, dk gy, some brn flakey sh

LM; lt brn, tan, foss ip, scat med spar calc cmt, dull yel fluor, rare tan cht, no stn or odor, no sample shows



conn
WOB 38K
PP 975#
SPM 60
RPM 72

conn
Vis 57
Wt. 9.3+
LCM 2#

ROP (min/ft)
Gamma (API)

conn
MudCo. Mud
Check at 4615'
Vis 56
Wt. 9.4
WL 9.0
CI 4500
PH 10.5
LCM 2#

conn
WOB 38K
PP 1000#
SPM 60
RPM 70

A.V.= 122.70

conn
Vis 55
Wt. 9.3
LCM 2#

conn
Vis 62
Wt. 9.4+
LCM 1#

A.V.= 121.70

conn
WOB 38K
PP 925#
SPM 54

10 Unit Incr. Shale

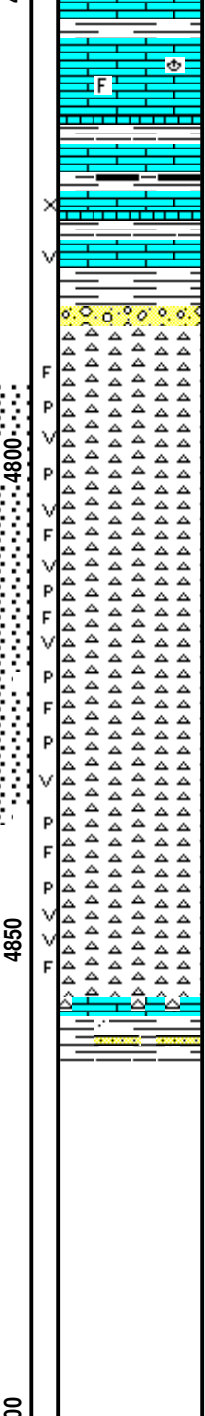
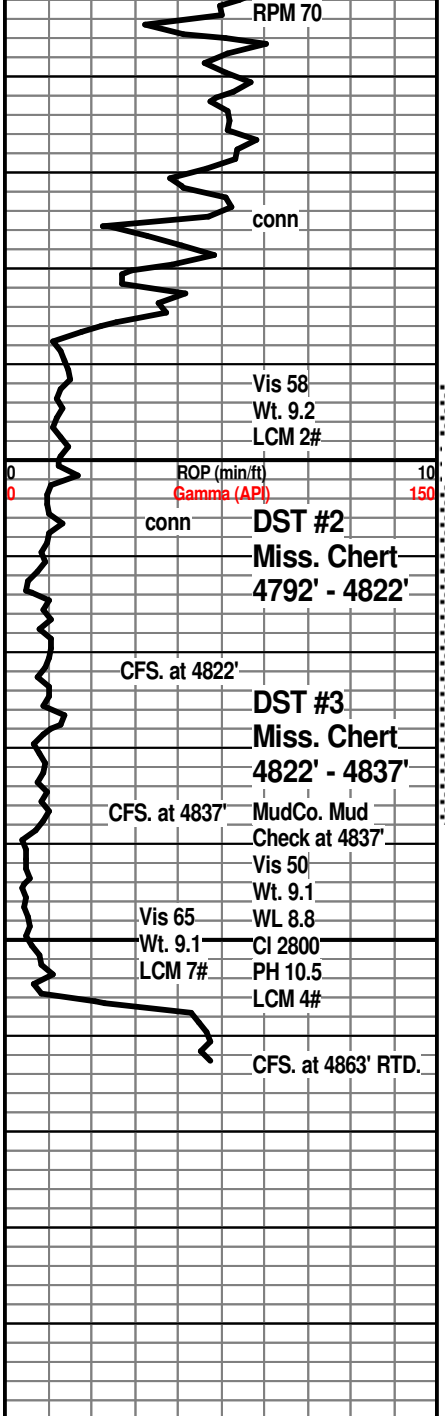
TG, C1-C5

3 Unit Incr. Shale - Gas Test at Extractor

20 Unit Incr. Shale

Recycle

4 Unit Incr.



LM; tan to med brn, foss ip, most well cem, most dense - micritic, blocky, dull to lt yel min fluor, no stn or odor, ns.

LM; off wh, tan to cream, dense, blocky, ns.

LM; lt to med brn, fxln, fair interxln w/scat small vug por, trc dk brn live oil stn, lt yel fluor, no gas kick

MISSISSIPPI CHERT 4786(-2569)

CHT; wh, off wh, yel, org, most fresh, occ trip cht, scat blk dead oil stn, trc frags, lt yel fluor

CHT; wh, off wh, fresh and trip, gd amt. of trip cht - some oil saturated pcs, much live edge stn, SFO, scat vug por, gas bubbles, faint oil/gas odor, much brite yel fluor, frags w/blk tar/gilsonite

CHT; wh, off wh, opaque, fresh and trip, much gd trip cht w/even lt brn to golden brn oil stn, gd frac, p-p & occ vug por, SFO, few gas bubbles, much brite yel fluor, faint odor

DST #2: Miss. Chert 4792' - 4822'

CHT; wh, off wh, fresh and trip, gd amt of trip cht w/much even stn, much brite yel fluor, SSFO, faint odor, frags and gd p-p por, rare vugs, definite decr. in show in fresh cht. at base

DST #3: Miss Chert 4822' - 4837'

CHT; wh to off wh, most opaque, pred fresh cht, frags and vug por, some trip cht w/well dev. trip - p-p por, little to no fluor, most barren, no odor

LM; tan to lt brn, foss ip, cherty ip, tite

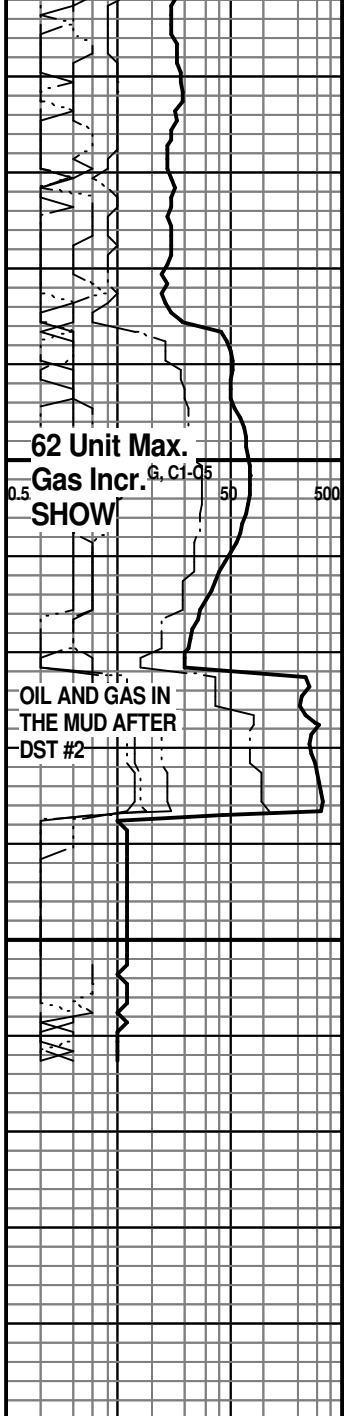
KINDERHOOK SHALE 4858(-2641)

SH; med grn, gy grn, sandy w/interbdd vf gr qtz grn ss strngs, firm

RTD. 4863' at 2:35 PM. 3/27/11

LTD. 4860'

Halliburton DIL, NEU/DEN/ Microlog





**TRILOBITE
TESTING, INC**

DRILL STEM TEST REPORT

Strata Exploration Inc.

Heft#2-5

P.O.Box 401
Fairfield Il.62837

5-28s-18w Kiowa Ks.

ATTN: Jon Christensen

Job Ticket: 041620

DST#: 1

Test Start: 2011.03.23 @ 21:56:13

GENERAL INFORMATION:

Formation: **Lans. A**

Deviated: No Whipstock: ft (KB)

Time Tool Opened: 00:05:58

Time Test Ended: 05:17:43

Test Type: Conventional Bottom Hole

Tester: Gary Pevoteaux

Unit No: 56

Interval: 4218.00 ft (KB) To 4236.00 ft (KB) (TVD)

Reference Elevations: 2217.00 ft (KB)

Total Depth: 4236.00 ft (KB) (TVD)

2208.00 ft (CF)

Hole Diameter: 7.88 inches Hole Condition: Fair

KB to GR/CF: 9.00 ft

Serial #: 8167

Inside

Press @ Run Depth: 39.42 psig @ 4219.00 ft (KB)

Capacity: 8000.00 psig

Start Date: 2011.03.23

End Date:

2011.03.24

Last Calib.:

2011.03.24

Start Time: 21:56:18

End Time:

05:17:42

Time On Btm:

2011.03.24 @ 00:02:58

Time Off Btm:

2011.03.24 @ 03:18:13

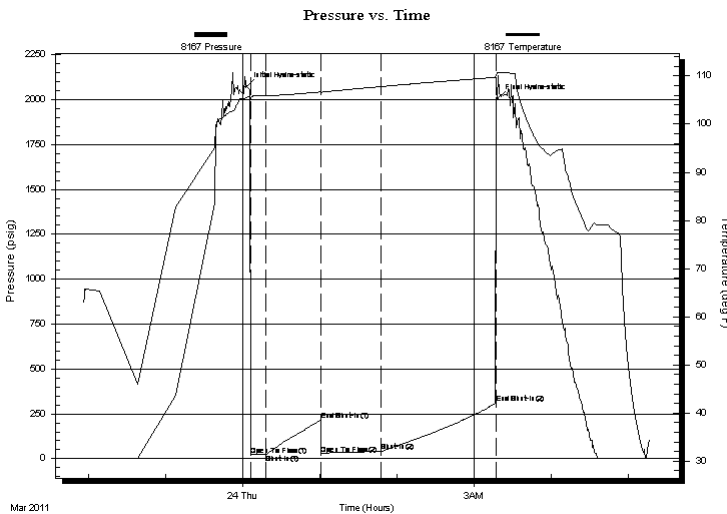
TEST COMMENT: IF: Strong blow . B.O.B. in 8 secs.

IS: No blow .

FF: Fair to strong blow . B.O.B. in 45 mins.

FS: No blow .

PRESSURE SUMMARY



Time (Min.)	Pressure (psig)	Temp (deg F)	Annotation
0	2071.75	105.61	Initial Hydro-static
3	18.54	105.30	Open To Flow (1)
15	26.82	105.95	Shut-In(1)
58	216.08	106.70	End Shut-In(1)
58	24.09	106.66	Open To Flow (2)
105	39.42	107.82	Shut-In(2)
194	307.84	109.73	End Shut-In(2)
196	2005.08	110.62	Final Hydro-static

Recovery

Length (ft)	Description	Volume (bbl)
25.00	Drig.mud	0.12
0.00	410ft.of GIP	0.00

Gas Rates

Choke (inches)	Pressure (psig)	Gas Rate (Mcf/d)



**TRILOBITE
TESTING, INC**

DRILL STEM TEST REPORT

FLUID SUMMARY

Strata Exploration Inc.

Heft#2-5

P.O.Box 401
Fairfield Il.62837

5-28s-18w Kiowa Ks.

Job Ticket: 041620

DST#: 1

ATTN: Jon Christensen

Test Start: 2011.03.23 @ 21:56:13

Mud and Cushion Information

Mud Type: Gel Chem

Cushion Type:

Oil API:

deg API

Mud Weight: 9.00 lb/gal

Cushion Length:

ft

Water Salinity:

4500 ppm

Viscosity: 60.00 sec/qt

Cushion Volume:

bbbl

Water Loss: 9.99 in³

Gas Cushion Type:

Resistivity: 0.00 ohm.m

Gas Cushion Pressure:

psig

Salinity: 4500.00 ppm

Filter Cake: 0.20 inches

Recovery Information

Recovery Table

Length ft	Description	Volume bbbl
25.00	Drig.mud	0.123
0.00	410ft.of GIP	0.000

Total Length: 25.00 ft Total Volume: 0.123 bbl

Num Fluid Samples: 0

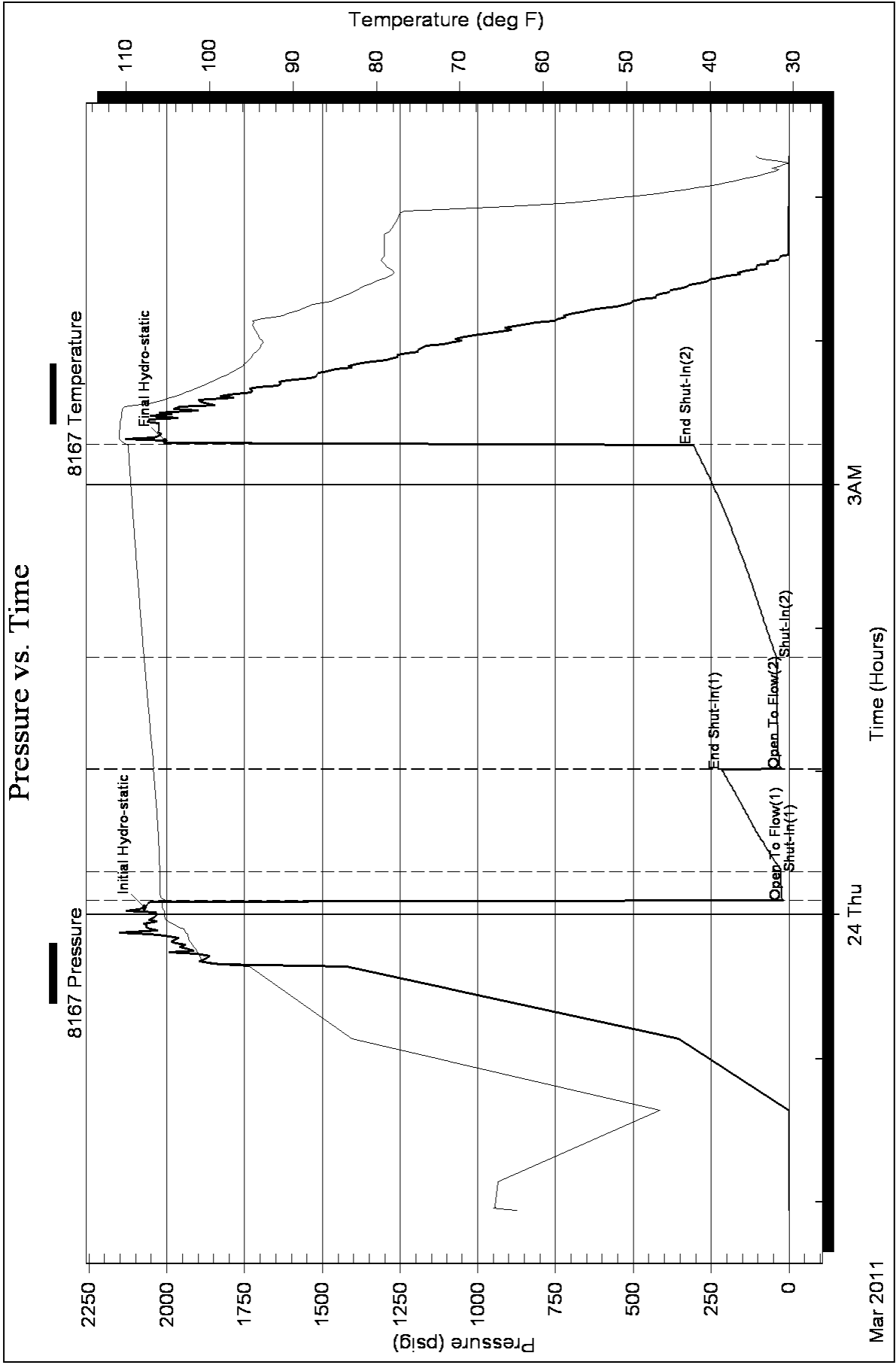
Num Gas Bombs: 0

Serial #: none

Laboratory Name:

Laboratory Location:

Recovery Comments:





**TRILOBITE
TESTING, INC**

DRILL STEM TEST REPORT

Strata Exploration

Heft 2-5

PO Box 401
Fairfield Il 62837

5-28S-18W Kiowa Ks

ATTN: Jon Christensen

Job Ticket: 42403

DST#: 2

Test Start: 2011.03.26 @ 03:38:00

GENERAL INFORMATION:

Formation: **Miss. Chert**

Deviated: No Whipstock: ft (KB)

Time Tool Opened: 05:42:30

Time Test Ended: 13:39:00

Test Type: Conventional Bottom Hole

Tester: Jack Fox

Unit No: 38

Interval: 4792.00 ft (KB) To 4822.00 ft (KB) (TVD)

Total Depth: 4822.00 ft (KB) (TVD)

Hole Diameter: 7.85 inches Hole Condition: Fair

Reference Elevations: 2217.00 ft (KB)

2208.00 ft (CF)

KB to GR/CF: 9.00 ft

Serial #: 8354 Inside

Press @ Run Depth: 1215.64 psig @ 4793.00 ft (KB)

Start Date: 2011.03.26

End Date: 2011.03.26

Start Time: 03:48:00

End Time: 13:39:00

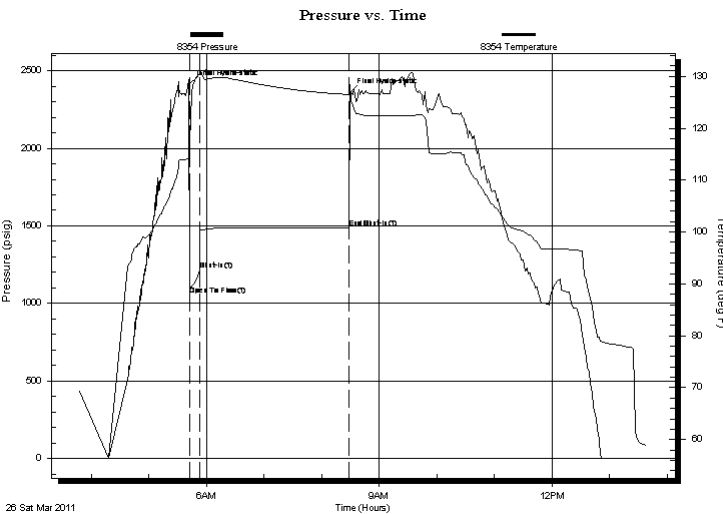
Capacity: 8000.00 psig

Last Calib.: 2011.03.26

Time On Btm: 2011.03.26 @ 05:42:00

Time Off Btm: 2011.03.26 @ 08:29:30

TEST COMMENT: IF BOB ASAO Gas to surface in 4 mn Flow ed oil in 10 mn



PRESSURE SUMMARY

Time (Min.)	Pressure (psig)	Temp (deg F)	Annotation
0	2410.02	114.24	Initial Hydro-static
1	1055.64	113.52	Open To Flow (1)
11	1215.64	130.30	Shut-In(1)
167	1489.66	126.48	End Shut-In(1)
168	2359.46	128.35	Final Hydro-static

Recovery

Length (ft)	Description	Volume (bbl)
124.00	GOCM 10%G 30%O 60%M	0.61
4624.00	Gassy Oil 25%G 75%O	64.59

Gas Rates

Choke (inches)	Pressure (psig)	Gas Rate (Mcf/d)



**TRILOBITE
TESTING, INC**

DRILL STEM TEST REPORT

FLUID SUMMARY

Strata Exploration

Heft 2-5

PO Box 401
Fairfeild Il 62837

5-28S-18W Kiowa Ks

Job Ticket: 42403

DST#: 2

ATTN: Jon Christensen

Test Start: 2011.03.26 @ 03:38:00

Mud and Cushion Information

Mud Type: Gel Chem

Cushion Type:

Oil API:

deg API

Mud Weight: 9.00 lb/gal

Cushion Length:

ft

Water Salinity:

ppm

Viscosity: 56.00 sec/qt

Cushion Volume:

bbbl

Water Loss: 8.98 in³

Gas Cushion Type:

Resistivity: ohm.m

Gas Cushion Pressure:

psig

Salinity: ppm

Filter Cake: inches

Recovery Information

Recovery Table

Length ft	Description	Volume bbbl
124.00	GOCM 10%G 30%O 60%M	0.610
4624.00	Gassy Oil 25%G 75%O	64.589

Total Length: 4748.00 ft

Total Volume: 65.199 bbl

Num Fluid Samples: 0

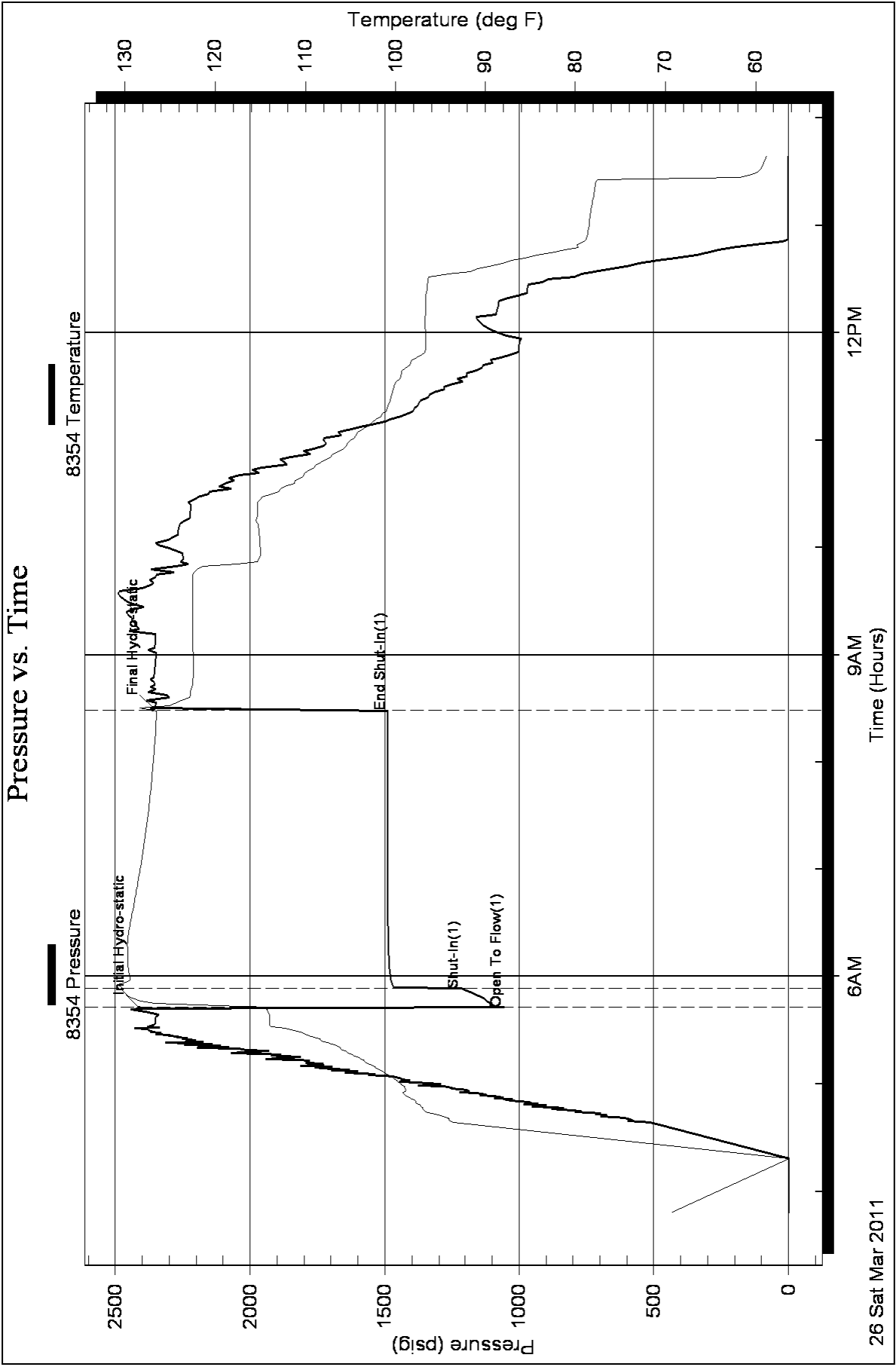
Num Gas Bombs: 0

Serial #:

Laboratory Name:

Laboratory Location:

Recovery Comments: 2# LCM





**TRILOBITE
TESTING, INC**

DRILL STEM TEST REPORT

Strata Exploration Inc.

Heft#2-5

P.O.Box 401
Fairfield Il.62837

5-28s-18w Kiowa Ks.

ATTN: Jon Christensen

Job Ticket: 42404

DST#: 3

Test Start: 2011.03.27 @ 00:30:00

GENERAL INFORMATION:

Formation: **Miss. Chert**

Deviated: No Whipstock: ft (KB)

Time Tool Opened: 02:38:00

Time Test Ended: 08:02:00

Test Type: Conventional Bottom Hole

Tester: Jack Fox

Unit No: 38

Interval: 4822.00 ft (KB) To 4837.00 ft (KB) (TVD)

Reference Elevations: 2217.00 ft (KB)

Total Depth: 4837.00 ft (KB) (TVD)

2208.00 ft (CF)

Hole Diameter: 7.88 inches Hole Condition: Poor

KB to GR/CF: 9.00 ft

Serial #: 8354

Inside

Press @ Run Depth: 1108.34 psig @ 4823.00 ft (KB)

Capacity: 8000.00 psig

Start Date: 2011.03.27

End Date:

2011.03.27

Last Calib.:

2011.03.27

Start Time: 00:30:00

End Time:

08:02:00

Time On Btm:

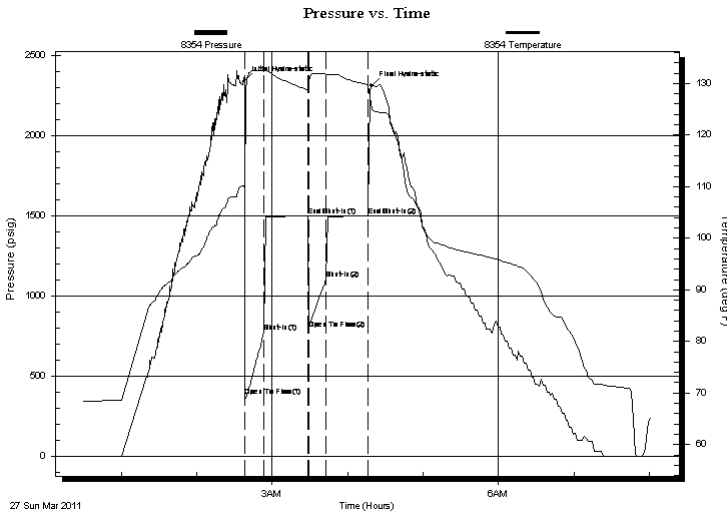
2011.03.27 @ 02:37:50

Time Off Btm:

2011.03.27 @ 04:19:00

TEST COMMENT: IF BOB in 38 sec Strong blow
ISI Gas to surface in 14 mn
FF Flow to pit
FSI Flow to Pit

PRESSURE SUMMARY



Time (Min.)	Pressure (psig)	Temp (deg F)	Annotation
0	2341.12	110.24	Initial Hydro-static
1	375.61	109.56	Open To Flow (1)
16	773.48	132.39	Shut-In(1)
51	1498.25	128.76	End Shut-In(1)
52	792.36	129.18	Open To Flow (2)
66	1108.34	131.77	Shut-In(2)
99	1498.20	129.69	End Shut-In(2)
102	2312.90	125.13	Final Hydro-static

Recovery

Length (ft)	Description	Volume (bbl)
2006.00	Salt w ater	26.74
315.00	Oil Speck sw tr	4.42
315.00	Gassy Oil 30%G 70%O	4.42
196.00	Salty OSM	2.75

Gas Rates

Choke (inches)	Pressure (psig)	Gas Rate (Mcf/d)



**TRILOBITE
TESTING, INC**

DRILL STEM TEST REPORT

FLUID SUMMARY

Strata Exploration Inc.

Heft#2-5

P.O.Box 401
Fairfield Il.62837

5-28s-18w Kiowa Ks.

Job Ticket: 42404

DST#: 3

ATTN: Jon Christensen

Test Start: 2011.03.27 @ 00:30:00

Mud and Cushion Information

Mud Type: Gel Chem

Cushion Type:

Oil API:

deg API

Mud Weight: 9.00 lb/gal

Cushion Length:

ft

Water Salinity:

27000 ppm

Viscosity: 62.00 sec/qt

Cushion Volume:

bbbl

Water Loss: 8.78 in³

Gas Cushion Type:

Resistivity: ohm.m

Gas Cushion Pressure:

psig

Salinity: ppm

Filter Cake: inches

Recovery Information

Recovery Table

Length ft	Description	Volume bbl
2006.00	Salt water	26.736
315.00	Oil Speck sw tr	4.419
315.00	Gassy Oil 30%G 70%O	4.419
196.00	Salty OSM	2.749

Total Length: 2832.00 ft

Total Volume: 38.323 bbl

Num Fluid Samples: 0

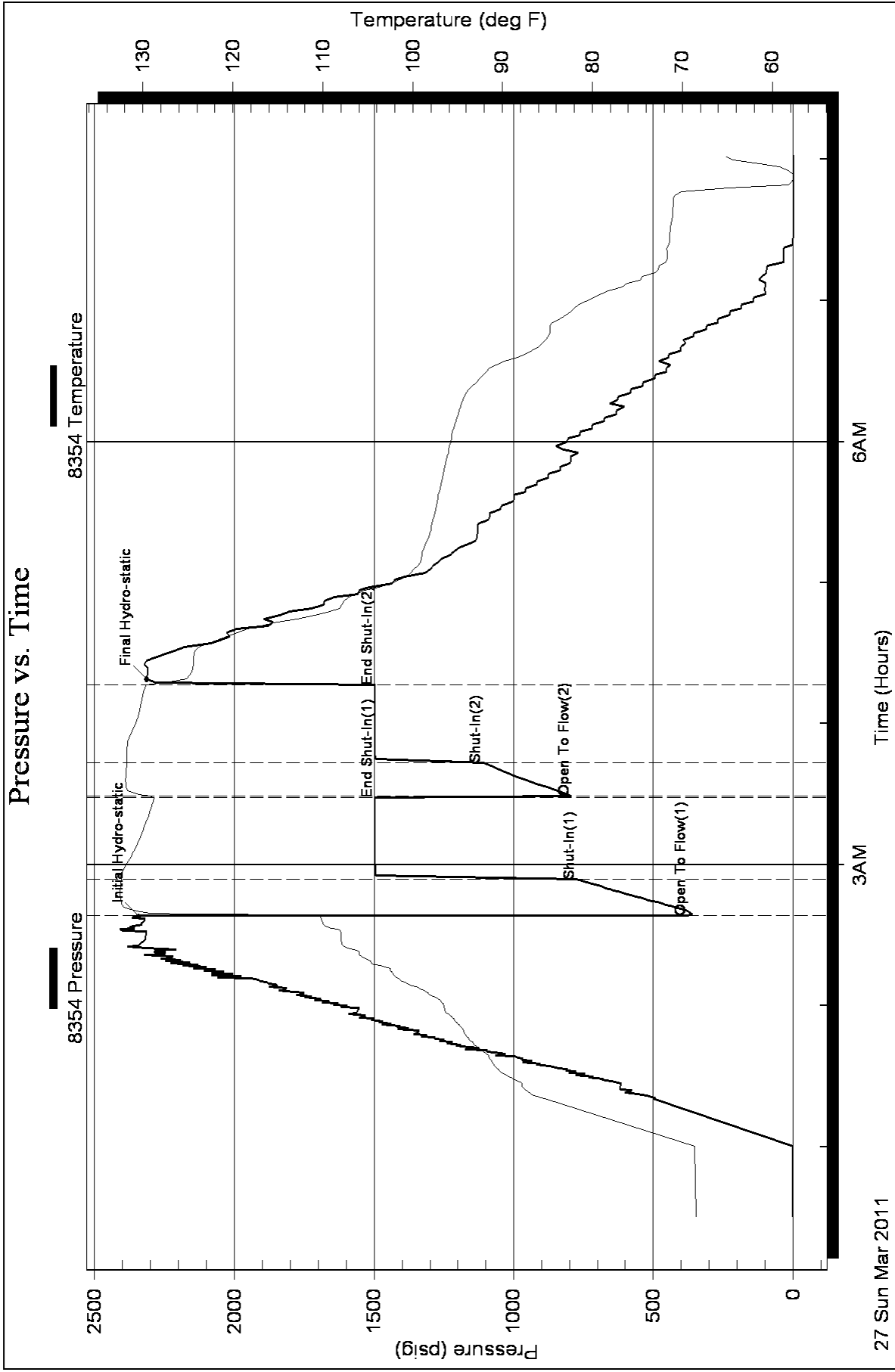
Num Gas Bombs: 0

Serial #:

Laboratory Name:

Laboratory Location:

Recovery Comments: LCM 3#





PAGE 1 of 1	CUST NO 1004072	INVOICE DATE 03/22/2011
INVOICE NUMBER 1718 - 90550953		

Pratt (620) 672-1201
 B STRATA EXPLORATION
 I PO Box: 401
 L FAIRFIELD
 L IL US 62837
 T
 O ATTN:

J	LEASE NAME	LEASE Heft 2-5	LEV 5	P/P 3/28
O	LOCATION			
B	COUNTY	DES Kiowa	CEMENT	A/P 3/30
S	STATE	KS	SURF PIPE	
I	JOB DESCRIPTION	CEMENT	COM LOE G/L	D/D
E	JOB CONTACT	Cement-New Well Casing/Pi	71730/	8678.34

JOB #	EQUIPMENT #	PURCHASE ORDER NO.	TERMS	DUE DATE
40298169	19842		Net - 30 days	04/21/2011
For Service Dates: 03/19/2011 to 03/19/2011				
0040298169				
171803420A Cement-New Well Casing/Pi 03/19/2011				
8 5/8" Surface				
A-Serv Lite	200.00	EA	9.75	1,950.00 T
Premium / Common	200.00	EA	12.00	2,399.99 T
Cello-flake	100.00	EA	2.78	277.50 T
Cement Gel	376.00	EA	0.19	70.50 T
Calcium Chloride	1,086.00	EA	0.79	855.23 T
Top Rubber Cement Plug 8 5/8"	1.00	EA	168.75	168.75
Unit Mileage Charge-Pickups, Vans & Cars	30.00	HR	3.19	95.63
Heavy Equipment Mileage	60.00	MI	5.25	315.00
Proppant and Bulk Delivery Charges	543.00	MI	1.20	651.60
Depth Charge; 0-500'	1.00	HR	750.00	750.00
Blending & Mixing Service Charge	400.00	MI	1.05	420.00
Plug Container Utilization Charge	1.00	EA	187.50	187.50
Supervisor	1.00	HR	131.25	131.25

PLEASE REMIT TO:	SEND OTHER CORRESPONDENCE TO:	SUB TOTAL	8,272.95
BASIC ENERGY SERVICES, LP	BASIC ENERGY SERVICES, LP	TAX	405.39
PO BOX 841903	PO BOX 10460	INVOICE TOTAL	8,678.34
DALLAS, TX 75284-1903	MIDLAND, TX 79702		



10244 NE Hwy. 61
 P.O. Box 8613
 Pratt, Kansas 67124
 Phone 620-672-1201

FIELD SERVICE TICKET
 1718 03420 A

DATE _____ TICKET NO. _____

DATE OF JOB: 3-19-11		DISTRICT: PRA-H Kc		NEW WELL <input checked="" type="checkbox"/> OLD WELL <input type="checkbox"/>		PROD <input type="checkbox"/> INJ <input type="checkbox"/> WDW <input type="checkbox"/>		CUSTOMER ORDER NO.:	
CUSTOMER: STRATA Exploration				LEASE: HSEFT		WELL NO. J-5			
ADDRESS:				COUNTY: Kiowa		STATE: KS			
CITY:				STATE:		SERVICE CREW: Sullivan, Mitchell, Veatch			
AUTHORIZED BY:				JOB TYPE: CNW 8 5/8 Surface					

EQUIPMENT#	HRS	EQUIPMENT#	HRS	EQUIPMENT#	HRS	TRUCK CALLED	DATE	AM	PM	TIME
19889-19847	40	mi					2-18-11			11:30
19826-19860	40	mi								1:00
19846										15:00
										23:00
										3:00
						MILES FROM STATION TO WELL		30		

CONTRACT CONDITIONS: (This contract must be signed before the job is commenced or merchandise is delivered).

The undersigned is authorized to execute this contract as an agent of the customer. As such, the undersigned agrees and acknowledges that this contract for services, materials, products, and/or supplies includes all of and only those terms and conditions appearing on the front and back of this document. No additional or substitute terms and/or conditions shall become a part of this contract without the written consent of an officer of Basic Energy Services LP.

SIGNED: *[Signature]*
 (WELL OWNER, OPERATOR, CONTRACTOR OR AGENT)

ITEM/PRICE REF. NO.	MATERIAL, EQUIPMENT AND SERVICES USED	UNIT	QUANTITY	UNIT PRICE	\$ AMOUNT
CL 106	4-seal like cement	sk	200		2,600.00
CL 100	Pre-mix cement	sk	200		3,200.00
CC 102	colt fake	lb	100		370.00
CC 109	Calcium chloride	lb	10860		1,140.30
CC 200	cmt gel	lb	376		94.00
CF 105	700 Rubber plug 8 5/8	SA	1		225.00
E 100	packer neck	mi	20		127.50
E 101	Heavy eqt mit	mi	60		420.00
E 113	Bulk Delivery	Tm	543		868.80
CE 200	Depth charge 0-500	SA	1		1,000.00
CE 240	mixing blades	sk	400		560.00
CE 504	Plug Converters (Part)	SA	1		250.00
S 003	Sealant Superseal	SA	1		175.00

SUB TOTAL

CHEMICAL / ACID DATA:			

SERVICE & EQUIPMENT	%TAX ON \$
MATERIALS	%TAX ON \$

TOTAL *Handwritten* 8,272.95

SERVICE REPRESENTATIVE: <i>Robert [Signature]</i>	THE ABOVE MATERIAL AND SERVICE ORDERED BY CUSTOMER AND RECEIVED BY: <i>[Signature]</i> (WELL OWNER OPERATOR CONTRACTOR OR AGENT)
---	---

FIELD SERVICE ORDER NO.



ASIC Energy services, L.P.

TREATMENT REPORT

Customer	STRATA Exploration	Lease No.		Date	3-19-11
Well Name	HEFT	Well #	2-5		
Field Order #	3420	Station	PRA-H KS	Casing	8 5/8
				Depth	522
				County	Kiowa
				State	KS
Type Job	CDW 8 5/8 Surface			Formation	
				Legal Description	S-29-18

PIPE DATA		PERFORATING DATA		FLUID USED		TREATMENT RESUME		
Casing Size	Tubing Size	Shots/Ft		Acid	RATE	PRESS	ISIP	
8 5/8								
Depth 522	Depth	From	To	Pre Pad	Max		5 Min.	
Volume 31	Volume	From	To	Pad	Min		10 Min.	
Max Press 300	Max Press	From	To	Frac	Avg		15 Min.	
Well Connection P.C.	Annulus Vol.	From	To		HHP Used		Annulus Pressure	
Plug Depth 492	Packer Depth	From	To	Flush	Gas Volume		Total Load	

Customer Representative	Station Manager	Treater
	DAVE SCOTT	Robert Allen

Service Units	19846	19889	19842	19824	19840				
Driver Names	Sullivan	Mittell		Uatch					

Time	Casing Pressure	Tubing Pressure	Bbls. Pumped	Rate	Service Log
1:00 am					on loc soft, mthy
					run 12 str 8 5/8 #23 CSG
1:30					CASING ON BOTTOM
1:40					Hook up to circ
1:50	150		3	3	at spacer
			5	5	mix cont A-seal-Lite
			49		min tail cont
					shot down AND Release Plug
				35	at dip
6:30 am			31		plug down
					circulated & NBC cont to P.T
					SOB Complete
					Thank you



PAGE 1 of 1	CUST NO 1004072	INVOICE DATE 03/30/2011
INVOICE NUMBER 1718 - 90559027		

Pratt (620) 672-1201
 B STRATA EXPLORATION
 I PO Box: 401
 L FAIRFIELD
 L IL US 62837
 T
 O ATTN:

J LEASE NAME Heft 2-5
 O LOCATION
 B COUNTY Kiowa
 S STATE KS
 I JOB DESCRIPTION Cement-New Well Casing/Pi
 T
 E JOB CONTACT

JOB #	EQUIPMENT #	PURCHASE ORDER NO.	TERMS	DUE DATE
40302031	19342		Net - 30 days	04/29/2011

	QTY	U of M	UNIT PRICE	INVOICE AMOUNT
For Service Dates: 03/28/2011 to 03/28/2011				
0040302031				
171803644A Cement-New Well Casing/Pi 03/28/2011 5 1/2" Longstring				
50/50 POZ	200.00	EA	8.25	1,649.91 T
60/40 POZ	50.00	EA	9.00	449.97 T
Cello-flake	50.00	EA	2.77	138.74 T
Cal-Set	840.00	EA	0.56	472.47 T
FLA-322	84.00	EA	5.62	472.47 T
KCL Potassium Chloride	453.00	EA	1.12	509.60 T
Gilsonite	1,200.00	EA	0.50	602.97 T
Latch Down Plug & Baffle 5 1/2" (Blue)	1.00	EA	299.98	299.98
Auto Fill Float Shoe 5 1/2" (Blue)	1.00	EA	269.98	269.98
Turbolizer 5 1/2" (Blue)	12.00	EA	82.50	989.94
5 1/2" Basket (Blue)	2.00	EA	217.49	434.98
Cement Scratchers Cable Type 5 1/2"	6.00	EA	56.25	337.48
Mud Flush	1,000.00	EA	0.64	644.96 T
CS-1L KCL Substitute	5.00	EA	26.25	131.24 T
Unit Mileage Charge-Pickups, Vans & Cars	30.00	HR	3.19	95.62
Heavy Equipment Mileage	60.00	MI	5.25	314.98
Proppant and Bulk Delivery Charges	317.00	MI	1.20	380.38
Depth Charge; 4001-5000'	1.00	HR	1,889.91	1,889.91
Blending & Mixing Service Charge	250.00	MI	1.05	262.49
Plug Container Utilization Charge	1.00	EA	187.49	187.49
Supervisor	1.00	HR	131.24	131.24

LEASE		LEV	P/P
DES	HEFT 2-5	5	A/P
DF	COM	LOC	D/D
	X		
		73551/11.037	08

PLEASE REMIT TO:	SEND OTHER CORRESPONDENCE TO:	SUB TOTAL	10,666.80
BASIC ENERGY SERVICES, LP	BASIC ENERGY SERVICES, LP	TAX	370.28
PO BOX 841903	PO BOX 10460	INVOICE TOTAL	11,037.08
DALLAS, TX 75284-1903	MIDLAND, TX 79702		

BASICSM
ENERGY SERVICES
PRESSURE PUMPING & WIRELINE

10244 NE Hwy. 61
P.O. Box 8613
Pratt, Kansas 67124
Phone 620-672-1201

FIELD SERVICE TICKET

1718 03644 A

DATE _____ TICKET NO. _____

DATE OF SERVICE 3-28-11 DISTRICT KANSAS		NEW WELL <input checked="" type="checkbox"/> OLD WELL <input type="checkbox"/> PROD <input type="checkbox"/> INJ <input type="checkbox"/> WDW <input type="checkbox"/> CUSTOMER ORDER NO.:								
CUSTOMER Strata Exploration		LEASE H'eft # 2.5 WELL NO.								
ADDRESS		COUNTY Kiowa 5-28-18 STATE KANSAS								
CITY STATE		SERVICE CREW A. Werth, J. Melson, D. Phye								
AUTHORIZED BY		JOB TYPE: 5 1/2" Long String CNW								
EQUIPMENT#	HRS	EQUIPMENT#	HRS	EQUIPMENT#	HRS	TRUCK CALLED	DATE	AM	PM	TIME
#28443 P.U.	2						3-28-11			820
19889-19842	2					ARRIVED AT JOB	3-28-11			
19960-19918	2					START OPERATION				1230
						FINISH OPERATION	3-28-11			2400
						RELEASED	3-28-11			2600
						MILES FROM STATION TO WELL	3-28-11			700
										30 Miles

CONTRACT CONDITIONS: (This contract must be signed before the job is commenced or merchandise is delivered).

The undersigned is authorized to execute this contract as an agent of the customer. As such, the undersigned agrees and acknowledges that this contract for services, materials, products, and/or supplies includes all of and only those terms and conditions appearing on the front and back of this document. No additional or substitute terms and/or conditions shall become a part of this contract without the written consent of an officer of Basic Energy Services LP.

SIGNED: _____
(WELL OWNER, OPERATOR, CONTRACTOR OR AGENT)

ITEM/PRICE REF. NO.	MATERIAL, EQUIPMENT AND SERVICES USED	UNIT	QUANTITY	UNIT PRICE	\$ AMOUNT
CP104	50/50 Poz	SK	200		\$ 2,200.00
CP103	60/40 Poz	SK	50		\$ 600.00
CC102	Cell Flake	lb	50		\$ 185.00
CC113	Cal-set	lb	840		\$ 630.00
CC129	FLA-322	lb	84		\$ 630.00
C700	KCL Potassium Chloride	lb	453		\$ 679.50
CC201	Gilsonite	lb	1200		\$ 804.00
CP607	Latch down Plug & Baffle 5 1/2" Blue	EA	1		\$ 400.00
CF1251	Auto Fill Float Shoe 5 1/2" Blue	EA	1		\$ 360.00
CF1651	Turbolizer 5 1/2" Blue	EA	12		\$ 1320.00
CF1901	5 1/2" Basket Blue	EA	2		\$ 580.00
CF2001	Cement Scratchers cable Types 5 1/2"	EA	6		\$ 450.00
CC151	mud Flush	gal	1000		\$ 860.00
CF2001	CS-1K KCL sub	gal	5		\$ 175.00

CHEMICAL / ACID DATA:			

SUB TOTAL		
DLS		
SERVICE & EQUIPMENT	%TAX ON \$	
MATERIALS	%TAX ON \$	
TOTAL		

SERVICE REPRESENTATIVE **Allen F. Werth** THE ABOVE MATERIAL AND SERVICE ORDERED BY CUSTOMER AND RECEIVED BY: **[Signature]**
(WELL OWNER OPERATOR CONTRACTOR OR AGENT)

FIELD SERVICE ORDER NO. _____



by services, L.P.

TREATMENT REPORT

Strata Explor.		Lease No.		Date	
Heft		Well # 2-5		3-28-11	
Order # 2644A	Station PRATH KS	Casing 5/2	Depth 4860'	County Kiowa	State KS.
Type Job 5 1/2" Long String		Formation CNW	TO 4863'	Legal Description 5-28-18	

PIPE DATA		PERFORATING DATA		FLUID USED		TREATMENT RESUME		
Casing Size 5/2"	Tubing Size	Shots/Ft 24		Acid		RATE	PRESS	ISIP
Depth 4860'	Depth	From	To 200	Pre Pad		Max		5 Min.
Volume 115	Volume	From	To 50	Pad		Min		10 Min.
Max Press 1500'	Max Press	From	To	Frac		Avg		15 Min.
Well Connection	Annulus Vol.	From	To			HHP Used		Annulus Pressure
Plug Depth 4842'	Packer Depth	From	To	Flush		Gas Volume		Total Load

Customer Representative George Payne	Station Manager scotty	Treater Allen
Service Units 28443 19889 19842 19960 19918		
Driver Names A. Werth Joe Melson Dale Phye		

Time	Casing Pressure	Tubing Pressure	Bbls. Pumped	Rate	Service Log
12:30 PM					on loc. discuss safety, set up, plan job
1:00					Ready to run 5 1/2" casing 15.5'
					start 5 1/2" casing. shoe joint 18'
					w/float shoe + L.P. Baffle in collar
					1-scratcher on shoe jt 5" from collar
					5-scratchers on 2nd jt. space even
					cent. 1st 4 Jts - 7-10-13-16-19
					22-25-28 - Basket 13 th -14 th Jt.
2:25					Pipe @ 3360 CIR Hole
3:05					Resume Running casing
4:00					casing @ 4860' bookup + CIR @ Reip
5:00	200#		24	5 1/2	Pump 24 Bbls mud. Flush
			5	5 1/2	Pump 5 Bbls H ₂ O spacer
				5 1/2	mix + Pump 200 sks 50/50 poz @ 14'
			48		Finish mix + cnt. washout Pump Line
				5 1/2	Drop Latch down Plug, stop 2% KCl Disp
	800#		85	5	caught lift PSI 8'5 Bbls out
6:00 PM	1500#		115	4	Plugs down
	0#				Release PSI - OK.
					Plug R.H. + M.H. w/50 sks 60/40 poz
					Washup + Ruckup - Job complete
					+ thanks Allen Joe, Dale

Conservation Division
Finney State Office Building
130 S. Market, Rm. 2078
Wichita, KS 67202-3802



phone: 316-337-6200
fax: 316-337-6211
<http://kcc.ks.gov/>

Thomas E. Wright, Chairman
Ward Loyd, Commissioner

Corporation Commission

Sam Brownback, Governor

May 13, 2011

John R Kinney
Strata Exploration, Inc.
PO BOX 401
FAIRFIELD, IL 62837-0401

Re: ACO1
API 15-097-21688-00-00
Heft 2-5
NE/4 Sec.05-28S-18W
Kiowa County, Kansas

Dear Production Department:

We are herewith requesting that the Well Completion Form ACO-1 and attached information for the subject well be held confidential for a period of two years.

Should you have any questions or need additional information regarding subject well, please contact our office.

Respectfully,
John R Kinney