



Woolsey Operating Company, LLC

Scale 1:240 (5"=100') Imperial
Measured Depth Log

Well Name: Platt GU #3
Location: S/2 NE SE
License Number: API: 15-007-23632-00-00
Spud Date: January 6, 2011
Surface Coordinates: 1650' FSL, 660' FEL Section 9-Twp 35 South - Rge 12 West
Bottom Hole Coordinates: Vertical Hole
Hartner
Region: Barber County, Kansas
Drilling Completed: January 16, 2011
Ground Elevation (ft): 1419
Logged Interval (ft): 4300 To: 5510
Formation: McLish Shale
Type of Drilling Fluid: Chemical Mud, Displace at 3400'
K.B. Elevation (ft): 1428
Total Depth (ft): 5510
Printed by WellSight Log Viewer from WellSight Systems 1-800-447-1534 www.WellSight.com

OPERATOR

Company: Woolsey Operating Company, LLC
Address: 125 N. Market, Suite 1000
Wichita, KS 67202

GEOLOGIST

Name: W. Scott Alberg
Company: Alberg Petroleum, LLC
Address: 609 Meadowlark Lane
Pratt, Kansas 67124

FORMATION TOPS

	SAMPLE TOPS	LOG TOPS
HUSHPUCKNEY SHALE	4601(-3173)	4596(-3168)
B/KC	4649(-3233)	4644(-3228)
PAWNEE	4748(-3320)	4645(-3317)
CHEROKEE GROUP	4796(-3368)	4792(-3364)
CHEROKEE SAND	4825(-3397)	4818(-3390)
MISSISSIPPIAN	4846(-3418)	4841(-3413)
COMPTON LIMESTONE	5116(-3688)	5114(-3686)
KINDERHOOK SHALE	5136(-3708)	5135(-3707)
WOODFORD SHALE	5212(-3784)	5210(-3782)
MISNER SAND	5235(-3807)	5232(-3804)
VIOLA	5266(-3838)	5263(-3835)
SIMPSON GROUP	5380(-3952)	5374(-3946)
SIMPSON WILCOX	5393(-3965)	5388(-3960)
MCLISH SHALE	5466(-4038)	5459(-4031)
MCLISH SAND	NDE	NDE
RTD	5510(-4082)	
LTD		5509(-4081)

COMMENTS

Surface Casing: Set joints 10 3/4" at 223' with 230 sxs Class A, 2% gel, 3% cc, plug down at 1:30 am on January 7, 2011. Cement did Circulate.

Production Casing: Ran 5 1/2" Casing.

Deviation Surveys: 224' 3/4, 1028' 1 3/4, 1249' 1/2, 1738' 1, 2269 1/2, 2745' 1, 3191' 3/4, 3700 1/4, 3794 1/4, 3985' 1, 4142' 1 1/2, 4363 1 1/4, 4615' 2, 4709' 3/4, 4918" 1 3/4, 5510'

Contractor Bit Record: 1- 14 3/4" out at 224'.

2- 7 7/8" out at RTD..

Gas Detector: Woolsey Operating Company, Trailer #2

Mud System: Mud Co, Brad Bortz, Engineer

DSTs: Ran 1 DST By Trilobite Testing. See Results Below.

Logged By Superior Well Services, Inc

LTD 5509'

DSTs

DST #1 4763 to 4918' Times 30-60-60-120

Strong Blow BOB in 3 minutes, GTS in 13 Minutes(see gas below). ISI No blow Back; Second Opening, Strong Blow GTS, FSI No Blow Back.

**1st Opening: 20 min 26 mcfpd
30 min 27 mcfpd**

**2nd Opening 10 min 29 mcfpd
20 min 26 mcfpd
30 min 23 mcfpd
40 min TSTM
50 min TSTM
60 Min TSTM**

Recovery: 60' GCM(7% Gas, 93% Mud)

120' SO&GCM(1% Oil, 9% Gas, 90% Mud)

Pressures: IHP 2324# FHP 2299#

IFP 110-81# FFF 68-106#

ISIP 863# FSIP 986#

CREWS

H2 Drilling Rig #3


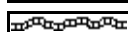
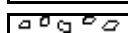
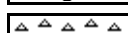
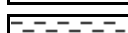

Tool Pusher - Randy Smith


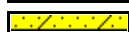
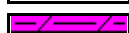


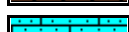
Drillers - Mark Staats




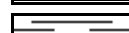


Gary Axtell



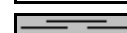


Martin Tinoco

ROCK TYPES





 **Anhy**
 **Bent**
 **Brec**
 **Cht**
 **Clyst**
 **Coal**

 **Congl**
 **Sdy dolo**
 **Shy dolo**
 **Dol**
 **Gyp**
 **Sdy lmst**

 **Lmst**
 **Mrlst**
 **Salt**
 **Shale**
 **Sltst**
 **Ss**

 **Black sh**
 **Gry sh**
 **Shale**
 **Shysltst**
 **Sltys**

	Anhy
	Arg
	Bent
	Bit
	Brecfrag
	Calc
	Carb
	Chtdk
	Chtlt
	Dol
	Ferrpel
	Ferr
	Glau
	Gyp
	Marl
	Nodule
	Phos
	Pyr
	Salt
	Sandy
	Silt

-  Chlorite
-  Dol
-  Sand
-  Slty

Algae
Amph
Belm
Bioclst
Brach
Bryozoa
Cephal
Coral
Crin
Echin
Fish
Foram
Fossil
Gastro
Oolite
Ostra

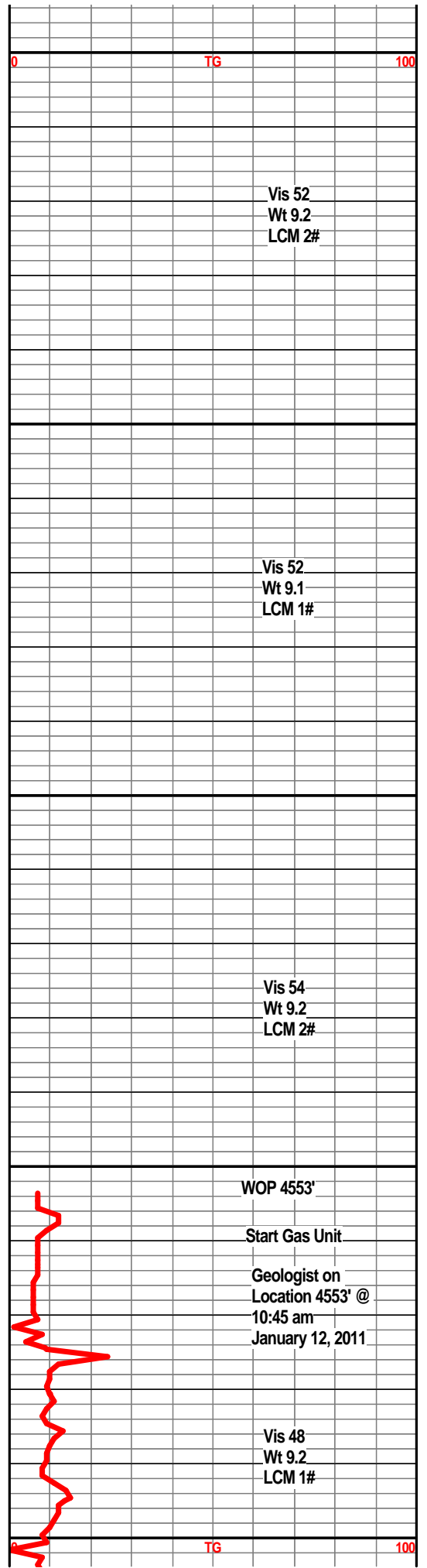
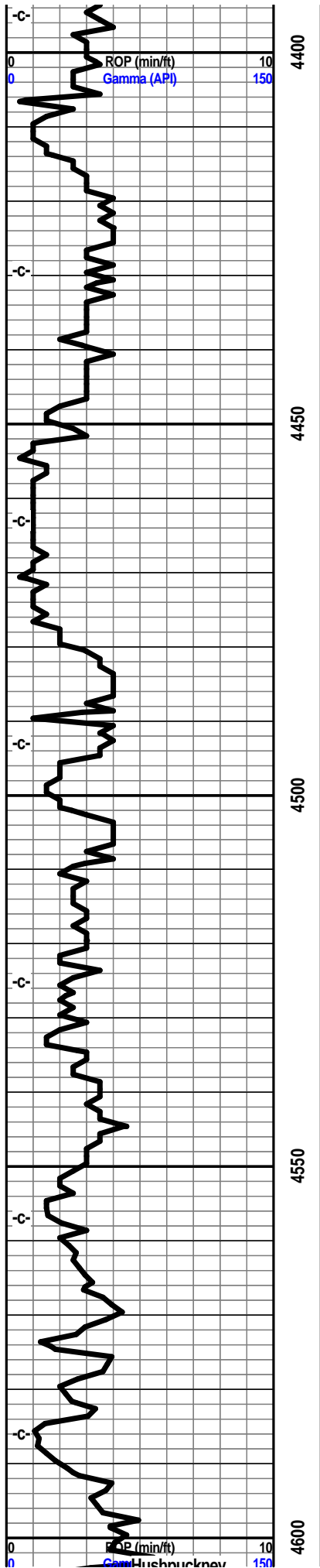
-  **Pelec**
-  **Pellet**
-  **Pisolite**
-  **Plant**
-  **Strom**
-  **Fuss**
-  **Oomoldic**

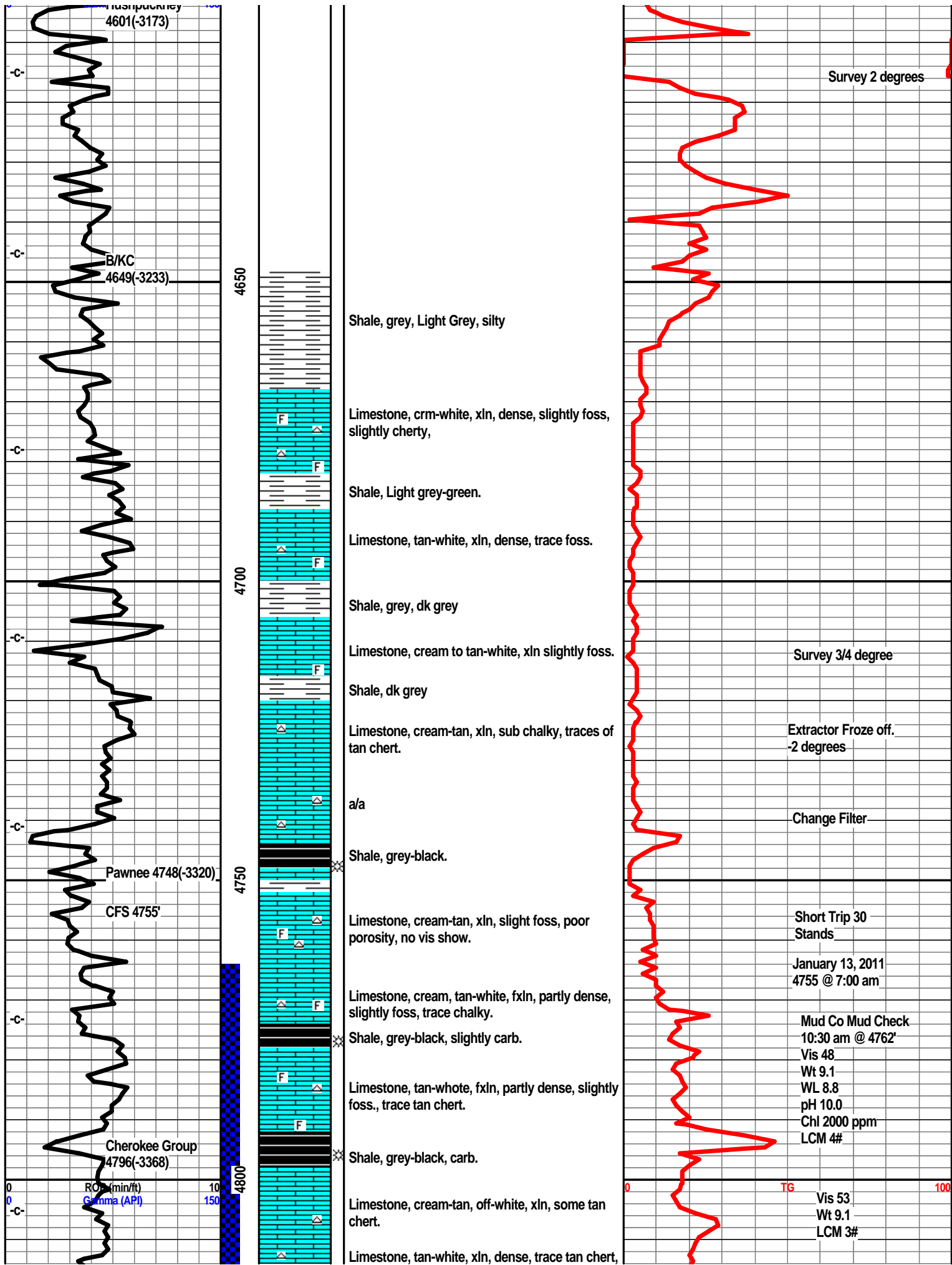
 Anhy
 Arg
 Bent
 Coal
 Dol
 Gyp
 Ls
 Mrst
 Slststrg
 Ssstrg
 Carbsh
 Clystn
 Dol

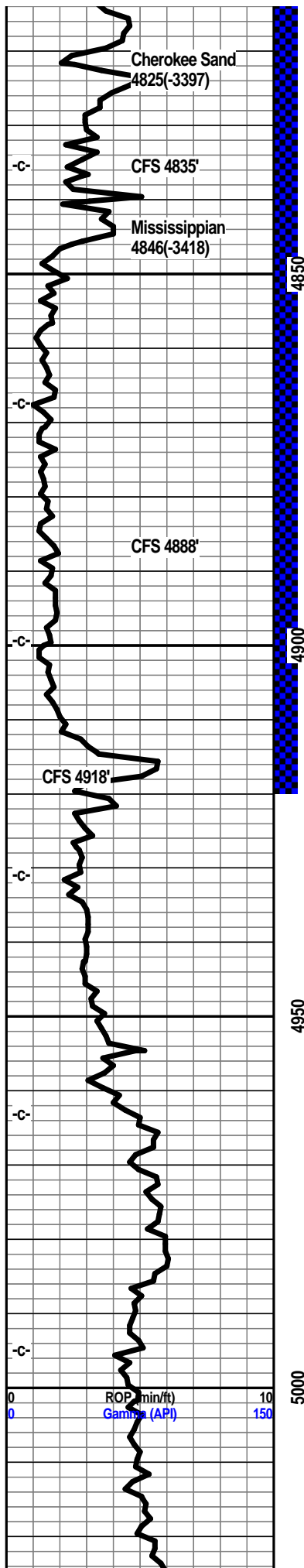
 **Grysh**
 **Gryslt**
 **Lms**
 **Sandylms**
 **Sh**
 **Sltstn**

BS	Boudst
C	Chalkst
CX	Cryxln
E	Earthy
FX	Finexln
GS	Grainst
L	Lithogr
MX	Microxln
MS	Mudst
PS	Packst
WS	Wackest

Curve Track 1		Depth	Lithology	Oil Shows	Geological Descriptions	TG, C1-C5			
ROP (min/ft)	Gamma (API)					TG (units)	C1 (units)	C2 (units)	C3 (units)
		43			Daily Drilling Progress January 6, 2011 MIRT January 7, 2011 224' WOC January 8, 2011 1662' @ 7:00 am January 9, 2011 2468' @ 7:00 am January 10, 2011 3329' @ 7:00 am January 11, 2011 3962' @ 7:00 am January 12, 2011 4505' @ 7:00 am January 13, 2011 4755' @ 7:00 am January 14, 2011 4918' @ 7:00 am January 15, 2011 5101' @ 7:00 am January 16, 2011 5390' @ 7:00 am January 17, 2011 5510' @ 7:00 am Running 5 1/2" Casing	0	TG	100	Vis 70 Wt 9.2 LCM 1# <







sl. foss.

Shale, grey, dark grey.

Sst, tan, grey, lt. grey, fine grained, angular grains, friable, some well cemented, very faint flour, slight show gas bubbles, no visible show of free oil, some scattered light brown staining, some clusters with good staining.

Shale, grey, green, dark green, some reds, trace chert.

Chert, white to off-white, opaque, translucent, some imbedded fossils, fresh, sharp, some weathered with light brown staining on edges, very faint odor, dull fluor., trace of gas bubbles.

Chert, white, off-white, some pale green, sharp, some weathered with small pp porosity, fossil frags imbedded, light brown scattered staining, some dk residual staining, very faint odor, trace of gas bubbles, dull fluor., good gas indication.

Chert, off-white, tan-white, sharp, increasing amounts of weathering, slight show of free oil, dull fluor, gas bubbles more evident, more even bwn staining, faint odor, good gas indication.

Chert, off-white, tan-white, opaque, some tan ls frags, chert sharp fresh with some weathering, slight show of free oil w/ few gas bubbles, dull fluor.

Chert a/a with more tan-white limestone and grey shale.

Limestone, tan-white, fxln, abundant chert, dark grey-green shales, Very dolomitic.

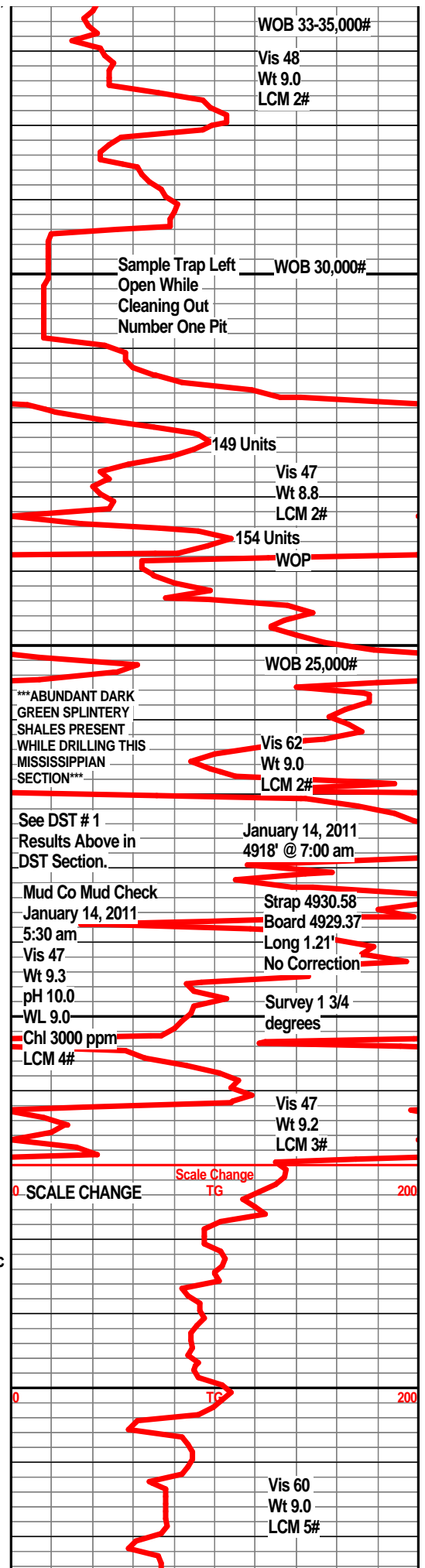
Dolo., Light grey, to tan or light brown, xln, dark grey silty shales, calcitic, some weathered and fresh chert, some very light staining on weathered cherts, no odor.

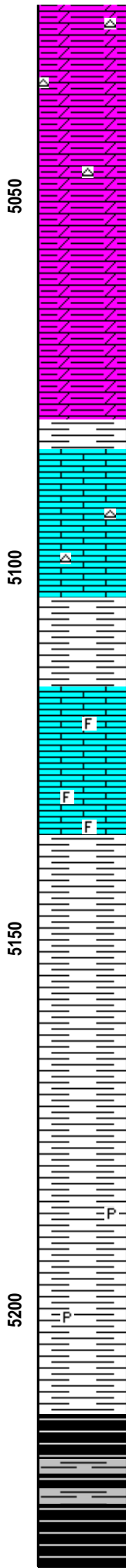
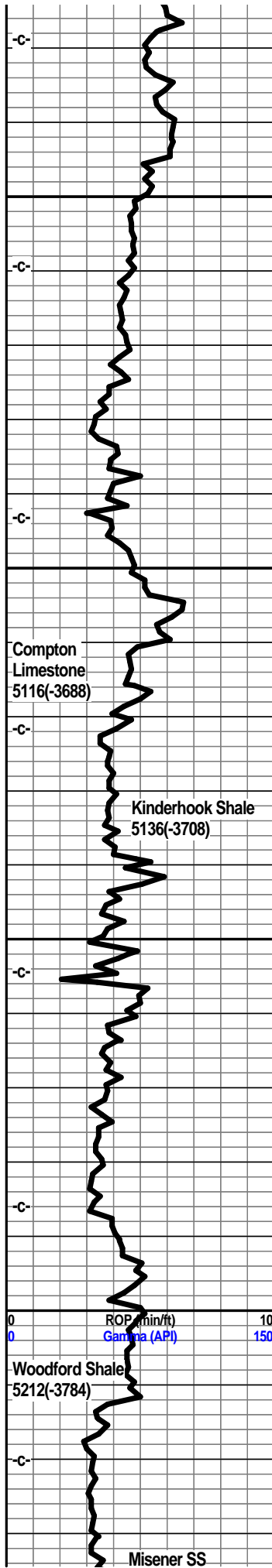
Dolo, Light Grey, xln, dark grey calcitic shales with traces of weathered cherts, no odor

Dolo, Light grey, some tan, xln, grey silty calcitic shales, no odor

Dolo, Light grey, xln, grey silty calcitic shales, firm, traces of weathered chert, no visible shows.

Dolo, a/a, increasing amounts of shales.





Dolo., Light rey to tan grey, xln, grey calcitic shales, traces if chert.

Dolo., Light grey to grey, xln, silty, grey shales, traces of chert.

Limestone, off-white to tan, xln, some very chalky soft, trace of chert.

Shale, green, Light grey.

Limestone, cream to grey-white, xln, dense, mottled in part, sub-chalky, trace foss.

Shale, grey, dark grey.

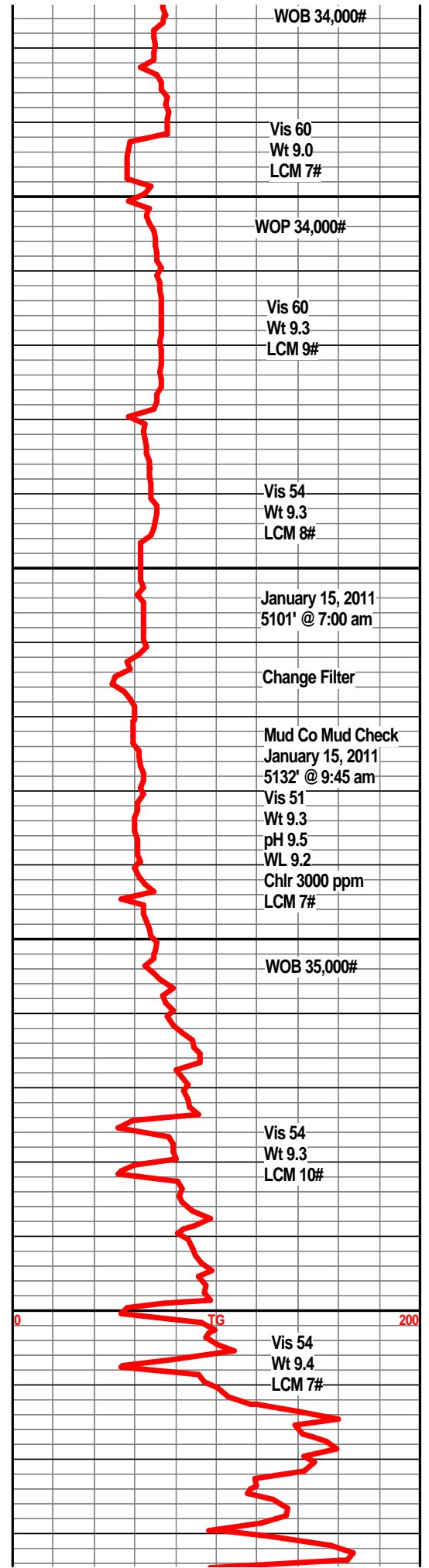
Shale, Grey, dark grey, splintery, firm.

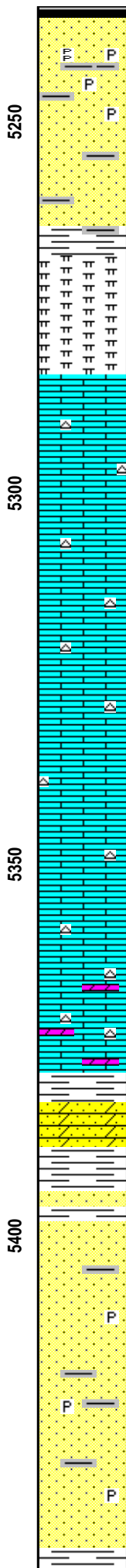
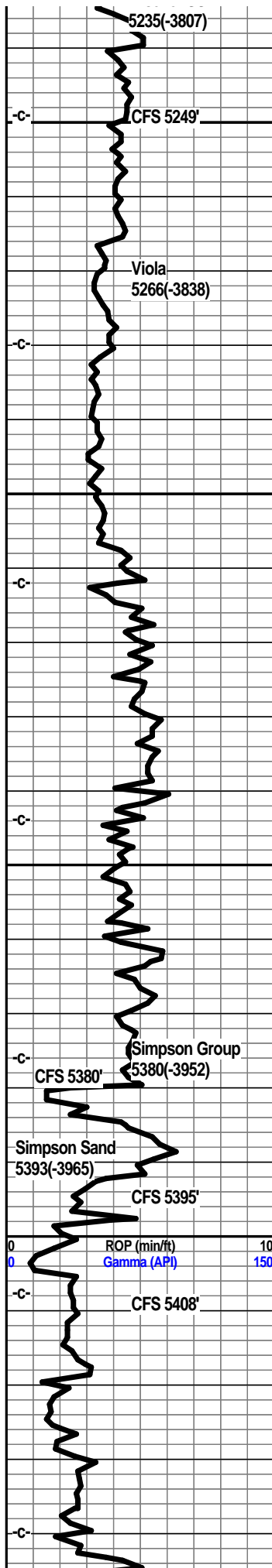
Shale, grey, dark grey, silty.

Shale, grey, dark grey, traces of pyrite.

Shale, Grey-black to a coffee brown, carb.

Shale, Grey-black, brown, show bleeding gas, carb.





Sst., clear to grey-white, subangular, poorly sorted, well cemented, traces of pyrite inclusions, no odor, no flour., no visible shows. Few pcs friable.

A/a, except tight with a spotty flour and slight show of oil in few clusters, very tight, no odor. very well cemented.

Shale, pale green to a dark green.

Dolo, light grey, soft, very fine grained.

Limestone, white to off-white, xln, chalky, traces of white chert, no vis por.

Limestone, off-white, light grey, mxln, traces of off-white chert, chalky in part.

Limestone, cream-tan, off-white, fxln, dense, tan cherts, sharp.

Limestone, tan-whie, fxln, dense, cherty.

Limestone, tan-white, fxln, fine grained, slight sandy texture, tan cherts, sharp.

Limestone, tan-white, some dark brown, xln, sandy in part, dolomitic in part, tan cherts, sharp, some dark green shales, trace of pyrite, no visible shows, no flour., no odor.

Dolomite, tan-brown, xln, very sandy texture, some trace pp porosity, xln porosity, fair odor, light show of oil, show gas bubbles bleeding from samples, dark brown staining, gas increase, fair flour.

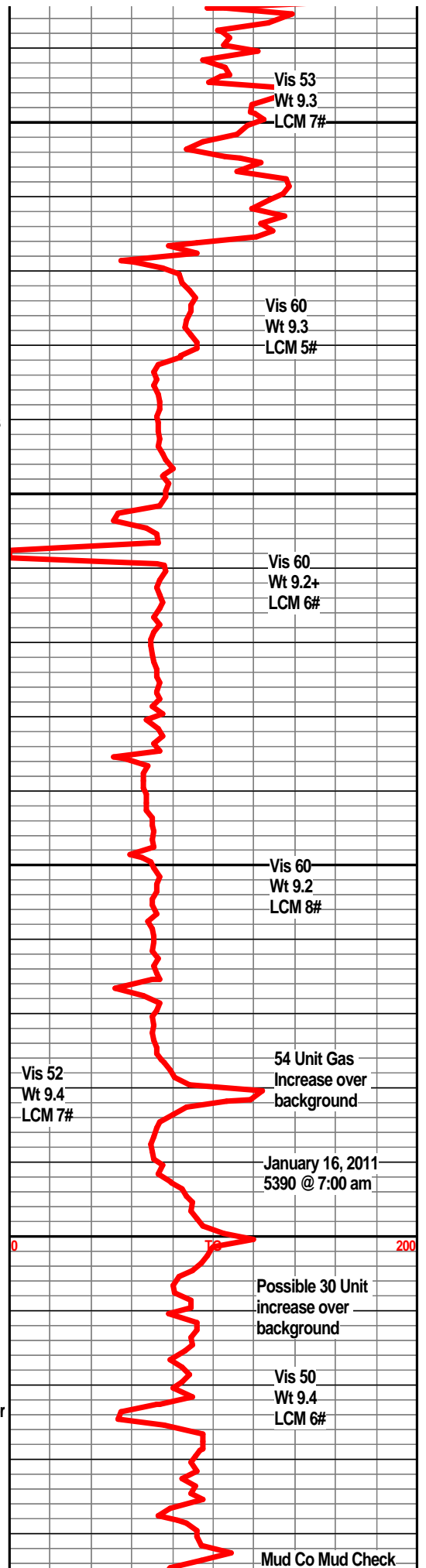
Shale, pale to dk green.

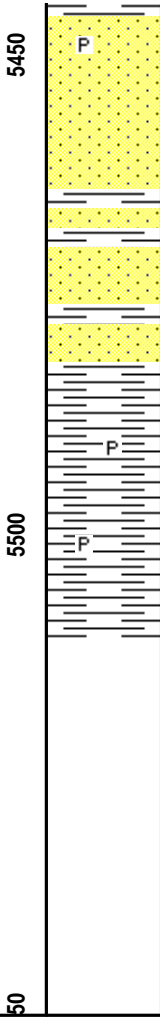
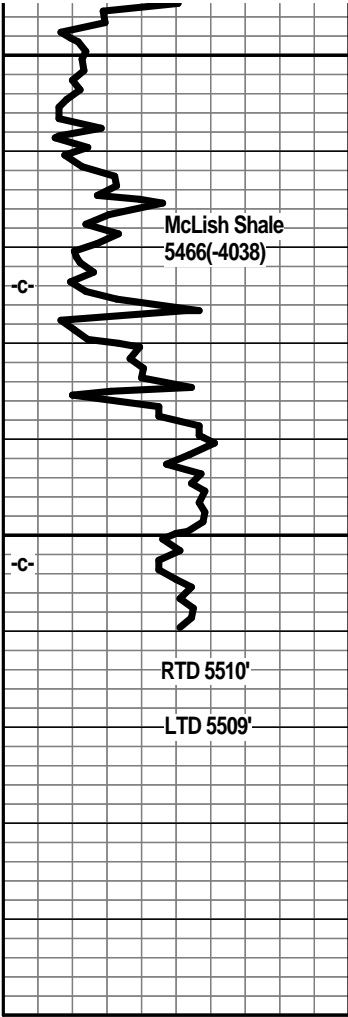
Sst, clear to frosted white med. grained, subangular, friable in part, very slight show of oil, sl. flour.,v. ft. odor

SSt,clear to frosted, med grained, subangular, poor sorting, friable in part, slight show of light oil, dull flour., faint odor, probable 30 unit increase in gas over background.

Sst. clear to frosted grains, subangular, friable for the most part, some well cementedd, glauc. flakes, some traces of pyrite inclusions, scattered flour., no odor.

Shale. green. waxev. firm.





Sst, grey-white to clear, med grained, angular, poorly sorted, glauc. flakes, traces of pyrite, some interbedded shale stringers, no visible shows, no odor, no gas increase.

a/a, abundant shales

Shale, dark green, firm, pyrite.

