

KEVIN L. KESSLER
CONSULTING PETROLEUM GEOLOGIST
 (316) 522-7338

OPERATOR : MULL DRILLING CO. INC.
LEASE : CORDER - HENNING WELL # : 1 - 22
LOCATION : 2435' FNL & 1003' FWL
SEC: 22 TWP : 16 S RGE : 23 W
COUNTY : NESS STATE : KANSAS

ELEVATION
KB : 2485
GL : 2480
MEASUREMENTS FROM
KB

CONTRACTOR : W W DRILLING RIG # 10
COMM : 02 / 10 / 2011 COMP : 02 / 16 / 2011
RTD : 4575 LOG TD : 4572
SAMPLES SAVED FROM : 3600 TO : RTD
GEOLOGICAL SUPERVISION FROM : 3600 TO : RTD
MUD UP : 3600 TYPE MUD : CHEMICAL

CASING RECORD
SURFACE :
8 5/8 @ 233'
PRODUCTION :
NONE

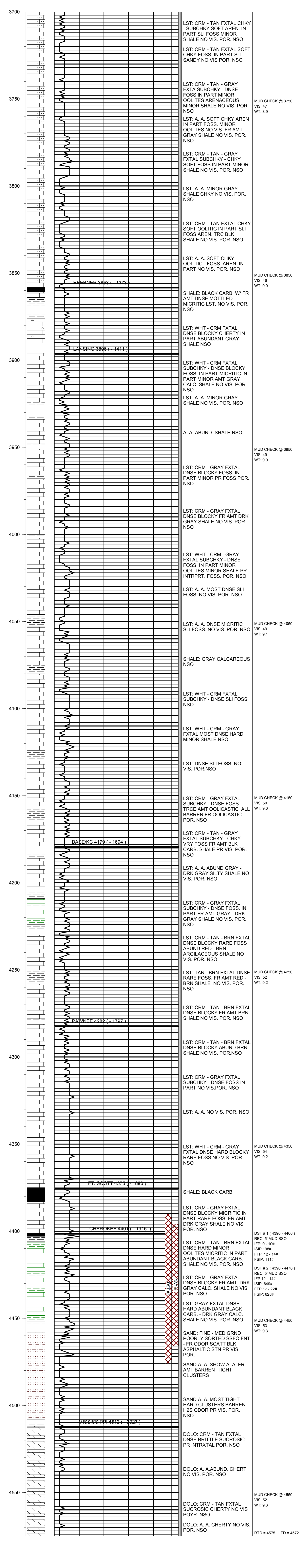
ELECTRICAL SURVEYS:

FORMATION	TOP	LOG	DATUM	TOP	SAMPLE	DATUM	STRUCT. COMP.
HEEBNER	3858		- 1373	3858		- 1373	- 02
LANSING	3896		- 1411	3896		- 1411	- 04
BASE/KANSAS CITY	4179		- 1694	4179		- 1694	- 05
PAWNEE	4282		- 1797	4282		- 1797	- 01
FT SCOTT	4368		- 1883	4375		- 1890	- 08
CHEROKEE	4398		- 1913	4401		- 1916	- 04
MISSISSIPPI	4512		- 2027	4512		- 2027	- 12

DIL
CNL / CDL
MICRO
SONIC

REFERENCE WELL FOR STRUCTURAL COMPARISON :

MULL DRILLING CO INC # 1 - 22 HENNING SEC.22 - T 16 S - R 23 W NESS COUNTY KANSAS



COMMENTS:

**DUE TO NEGATIVE DST RESULTS THIS WELL WAS
 PLUGGED AS DRY & ABANDONED**

KEVIN L. KESSLER