

LITHOLOGY STRIP LOG

WellSight Systems

Scale 1:240 (5"=100') Imperial

Well Name: #1-29 Rosenberger
Location: 1650' FNL & 335' FEL, Sec. 29-T27S-R18W, Kiowa Co., KS.
Licence Number: 15-097-21683-0000 Region: Einsel Field
Spud Date: 2/15/2011 Drilling Completed: 2/23/2011
Surface Coordinates: 1650' FNL & 335' FEL, Sec. 29-T27S-R18W

Bottom Hole Same as above
Coordinates:
Ground Elevation (ft): 2211' K.B. Elevation (ft): 2220'
Logged Interval (ft): 3380' To: 4816' Total Depth (ft): 4816'
Formation: Kinderhook at Total Depth
Type of Drilling Fluid: Freshwater/Gel to 3211'; Chemical Gel 3211' to TD.

Printed by MUD.LOG from WellSight Systems 1-800-447-1534 www.WellSight.com

OPERATOR

Company: Strata Exploration, Inc.
Address: P.O. Box 401
Fairfield, IL. 62837-0401

GEOLOGIST

Name: Jon D. Christensen
Company: Consulting Petroleum Geologist
Address: 9002 W. Silver Hollow St.
Wichita, KS. 67205-8856

Cores

None Taken

DSTs

DST #1(Lansing 'A') 4207' - 4225' Test Times 15"-45"-30"-60" IFP Weak 0.5" blow; FFP Weak 0.5" Blow, no Blowback on SI's; REC: 5' DM, no shows of oil or gas; IFP 17-18#, ISIP 1435#, FFP 20-26#, FSIP 1400#, IHP 2101#, FHP 2029#, BHT 112 Deg. F.

DST #2(Miss. Chert) 4750' - 4804' Test Times 15"-45"-60"-120"
IFP Fair to Strong Blow BOB/13", FFP Fair to Strong Blow BOB/22", no Gas to Surface, 4.5" Blowback on ISI, no Blowback on FSI; REC: 786' GIP, 20' SGCM(2%G, 98% M), no water; IFP 30-36#, ISIP 80#, FFP 40-38#, FSIP 841# and Building, IHP 2427#, FHP 2324#, BHT 121 Deg. F.

Comments

2/15/11 MIRU Sterling Drilling Co. Rig #4, Spud at 2:45 PM; 2/16/11 TD. 525' - WOC; 2/17/11 Drilling at 1458'; 2/18/11 Drilling at 2660'; 2/19/11 Drilling at 3360'; 2/20/11 Drilling at 3970'; 2/21/11 TD. 4225' - TOH with DST #1; 2/22/11 Drilling at 4560'; 2/23/11 TD. 4804' - TIH for DST #2; 2/24/11 RTD. 4816' - LTD. 4817' - CCH for LDDP to run 5 1/2" Production Casing.

Set 8 5/8"(23#) Surface Casing at 522' w/400 sx/(Basic Energy Services). Cement Did Circulate. PD. 3:45 AM. 2/16/11.

Surveys: 0.5 Degree at 525'(Surface Casing); 0.5 Deg. at 4225'(DST #1); 0.5 Deg. at 4804'(DST #2).

Pipe Strap at 4804'(DST #2): Strap 2.11' Long to the Board, no correction made to the Board.

After evaluation of the Halliburton logs, DST data and structural position, the operator elected to set new 5 1/2" Production Casing for completion in the Mississippi Chert.

LOG TOPS:

ROCK TYPES

Anhy	Clyst	Gyp	Mrlst	Shgy
Bent	Coal	Igne	Salt	Sltst
Brec	Congl	Lmst	Shale	Ss
Cht	Dol	Meta	Shcol	Till

ACCESSORIES

MINERAL	Gyp	FOSSIL	Ostra	Sltstrg
Anhy	Hvymin	Algae	Pelec	Ssstrg
Arggrn	Kaol	Amph	Pellet	TEXTURE
Arg	Marl	Belm	Pisolite	Boundst
Bent	Minxl	Bioclst	Plant	Chalky
Bit	Nodule	Brach	Strom	Cryxln
Brecfrag	Phos	Bryozoa	STRINGER	Earthy
Calc	Pyr	Cephal	Anhy	Finexln
Carb	Salt	Coral	Arg	Grainst
Chtdk	Sandy	Crin	Bent	Lithogr
Chtlt	Silt	Echin	Coal	Microxln
Dol	Sil	Fish	Dol	Mudst
Feldspar	Sulphur	Foram	Gyp	Packst
Ferrpel	Tuff	Fossil	Ls	Wackest
Ferr		Gastro	Mrst	
Glau		Oolite		

OTHER SYMBOLS

POROSITY	Vuggy	ROUNDING	Spotted	EVENT
Earthy		Rounded	Ques	Rft
Fenest	SORTING	Subrnd	Dead	Sidewall
Fracture	Well	Subang	INTERVAL	
Inter	Moderate	Angular	Core	
Moldic	Poor	OIL SHOW	Dst	
Organic		Even		
Pinpoint				

Curve Track 1

ROP (min/ft)

Gamma (API)



TG (Units)

C1 (units)

C2 (units)

C3 (units)

C4 (units)

C5 (units)



Depth

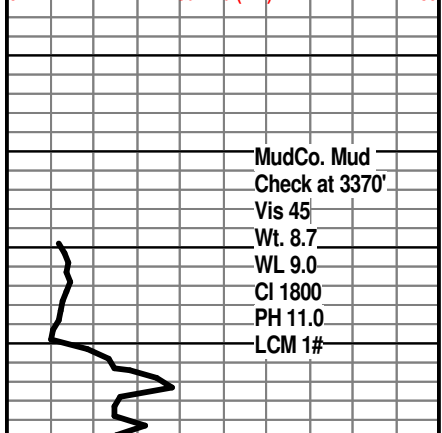
Porosity Type

Lithology

Oil Shows

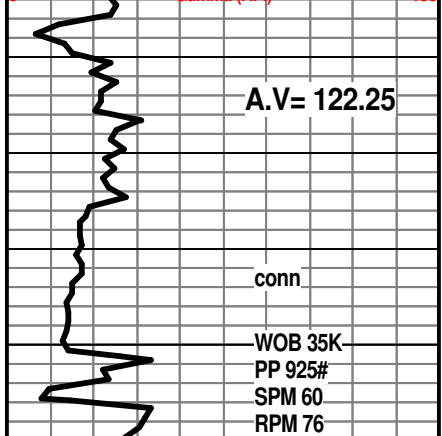
Geological Descriptions

ROP (min/ft) 10
Gamma (API) 150



MudCo. Mud
Check at 3370'
Vis 45
Wt. 8.7
WL 9.0
Cl 1800
PH 11.0
LCM 1#

ROP (min/conn) 10
Gamma (API) 150

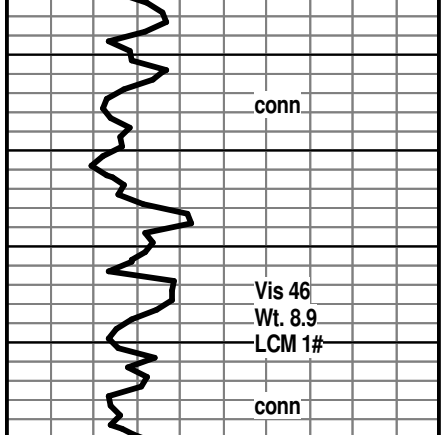


A.V= 122.25

conn

WOB 35K
PP 925#
SPM 60
RPM 76

ROP (min/conn) 10
Gamma (API) 150

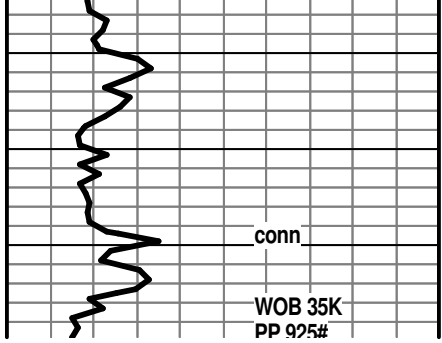


conn

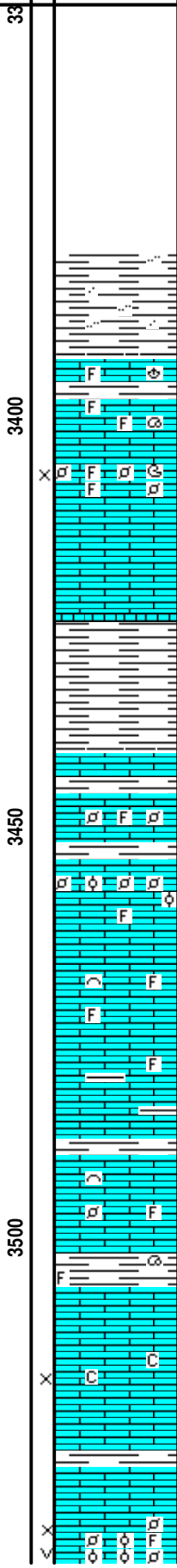
Vis 46
Wt. 8.9
LCM 1#

conn

ROP (min/conn) 10
Gamma (API) 150



WOB 35K
PP 925#



STRATA EXPLORATION, INC.

#1-29 ROSENBERGER

GEOLOGICAL REPORT

KB. 2220'

SH; med gy, silty to sandy, fiss

STOTLER LMST. 3393(-1173)

LM; lt to med brn, v. foss(abnt fusulinids), most dense, well cem, no vis por, ns.

LM; tan to off wh, buff, v. foss, well dev. interpart por, soft, dull yel min fluor only, no stn or odor, no gas kick, ns.

LM; med/dk brn, hd, blocky, tite

SH; lt gy, rare med gy, soft, silty ip.

LM; med gy to med brn, most dense, micritic, blocky, interbdd gy to grn shales, tite

LM; tan to lt brn, foss to finely pelletal, some well cem ooids, no vis por, no stn or odor, ns.

LM; med to dk brn, gy brn, dense, partly argil, tite

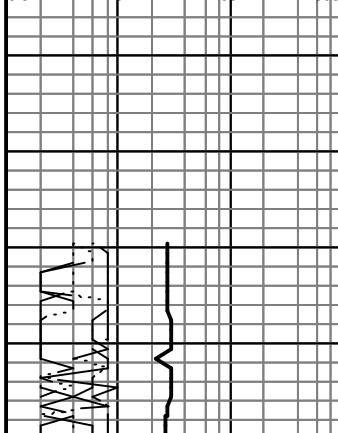
LM; tan to med brn, occ buff, most dense, well cem, foss to micritic, no vis por, no fluor, ns.

SH; grn, soft, foss ip, platy

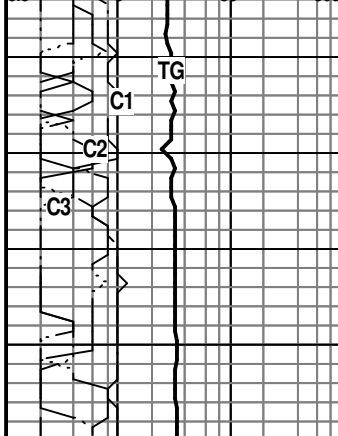
LM; tan to med brn, med to occ cse xln, fair interxln por, scat spar calc xtals, trc soft chalky mtx, poor interxln por, dull yel min fluor only, no stn or odor, ns.

LM; tan to cream, lt brn, foss, scat gd interpart por, some vug por also, interbdd soft chalky mtx, lt yel min fluor only, no stn or odor, no gas kick, ns.

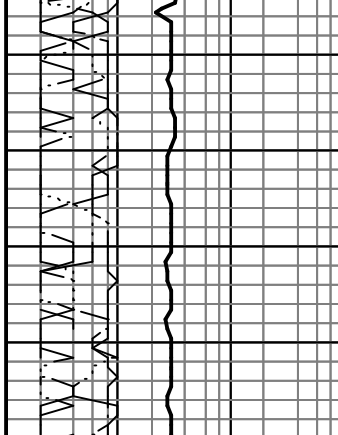
TG, C1-C5 50 500



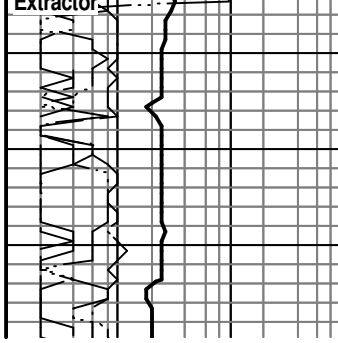
TG, C1-C5 50 500



TG, C1-C5 50 500



Gas Test at Extractor



SPM 60
RPM 70

conn
Vis 48
Wt. 8.9
LCM 1#

conn

ROP (min/ft)
Gamma (API)

Vis 47
Wt. 8.9
LCM 1#

conn

WOB 35K
PP 900#
SPM 60
RPM 71

conn

Vis 46
Wt. 9.0
LCM 1#

conn

A.V.=122.5

conn

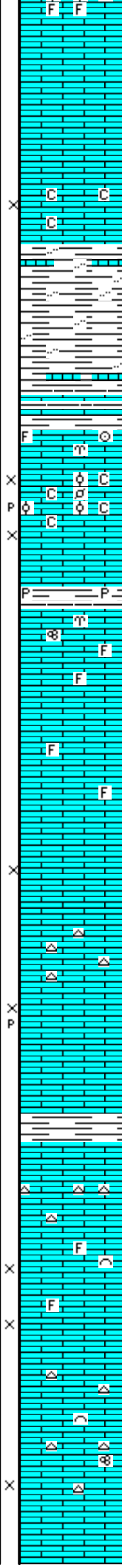
3550

3600

3650

3700

3750



LM; tan to lt brn, cream, f to med xln, some dense-micritic, occ spar calc xtals, no vis por, no stn or odor, ns.

LM; tan to off wh, cream, f to med xln, fair to gd interxln por, chalky - soft ip, no fluor, no stn or odor, ns.

SH; med gy, firm, occ silty, interbdd thin lmy shale strngs.

HOWARD 3600(-1380)
LM; med/dk brn, v. foss, hd, tite

LM; wh, off wh, fxln to occ sucrosic, foss- pelletal ip, gd interxln w/p-p por, lt yel min fluor, scat chalky mtx, no stn or odor, no gas kick, ns.

SH; med gy to grn, fiss, occ pyr

LM; tan to cream, buff, lt brn, foss ip(fusulinids), most dense, blocky, rare dull yel min fluor, no stn or odor, ns.

LM; tan to lt brn, buff, foss ip, most dense - micritic, blocky, no vis por, scat lt yel min fluor, no stn, ns.

LM; lt brn, fxln, fair to gd interxln por, dull yel min fluor, no stn, ns.

LM; lt brn, tan, most dense, occ gy to tan cht, no vis por, ns.

LM; tan to buff, lt brn, fxln, scat v. soft lmst w/chalky mtx, fair interxln w/occ p-p por, no fluor, no stn or odor, ns.

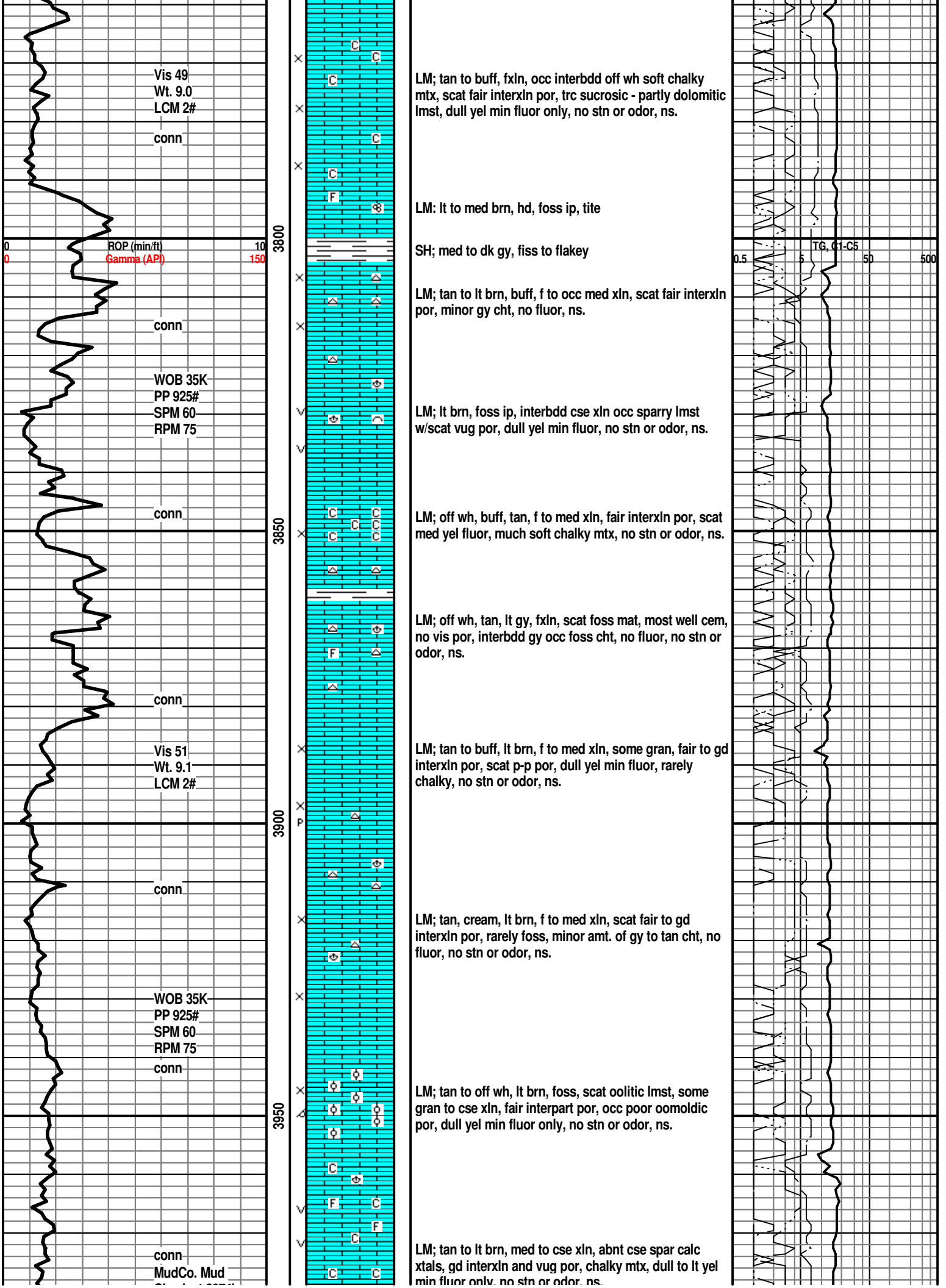
SH; med to dk gy, firm
TOPEKA 3700(-1480)

LM; med brn, hd, occ cherty, tite

LM; lt brn, rare tan, fxln to occ sucrosic text, fair to gd interxln por, scat foss mat, dull yel min fluor only, no stn or odor, no gas kick, ns.

LM; off wh, tan to lt brn, fxln, occ foss w/fusulinids, fair interxln por, interbdd gy cht, no stn or odor, ns.

0.5 TO C1-C5 50 500



Vis 49
Wt. 9.0
LCM 2#

conn

LM; tan to buff, fxl, occ interbdd off wh soft chalky mtx, scat fair interxln por, trc sucrosic - partly dolomitic lmst, dull yel min fluor only, no stn or odor, ns.

ROP (min/ft)
Gamma (API)

conn

LM: lt to med brn, hd, foss ip, tite

SH; med to dk gy, fiss to flakey

LM; tan to lt brn, buff, f to occ med xln, scat fair interxln por, minor gy cht, no fluor, ns.

WOB 35K
PP 925#
SPM 60
RPM 75

conn

LM; lt brn, foss ip, interbdd cse xln occ sparry lmst w/scat vug por, dull yel min fluor, no stn or odor, ns.

LM; off wh, buff, tan, f to med xln, fair interxln por, scat med yel fluor, much soft chalky mtx, no stn or odor, ns.

conn

LM; off wh, tan, lt gy, fxl, scat foss mat, most well cem, no vis por, interbdd gy occ foss cht, no fluor, no stn or odor, ns.

Vis 51
Wt. 9.1
LCM 2#

conn

LM; tan to buff, lt brn, f to med xln, some gran, fair to gd interxln por, scat p-p por, dull yel min fluor, rarely chalky, no stn or odor, ns.

WOB 35K
PP 925#
SPM 60
RPM 75

conn

LM; tan, cream, lt brn, f to med xln, scat fair to gd interxln por, rarely foss, minor amt. of gy to tan cht, no fluor, no stn or odor, ns.

LM; tan to off wh, lt brn, foss, scat oolitic lmst, some gran to cse xln, fair interpart por, occ poor oomoldic por, dull yel min fluor only, no stn or odor, ns.

conn
MudCo. Mud

LM; tan to lt brn, med to cse xln, abnt cse spar calc xtals, gd interxln and vug por, chalky mtx, dull to lt yel min fluor only, no stn or odor, ns.

Check at 3974'
Vis 50
Wt. 9.2
WL 9.2
CI 3000
PH 10.5
LCM 2#

ROP (min/ft) 10
Gamma (API) 150

conn

A.V.=122.75

conn

WOB 35K
PP 975#
SPM 60
RPM 78
conn

Vis 50
Wt. 9.2
LCM 1#

conn

conn

Vis 55
Wt. 9.1
LCM 2#

conn
WOB 35K
PP 1000#
SPM 60
RPM 68

A.V.=122.75

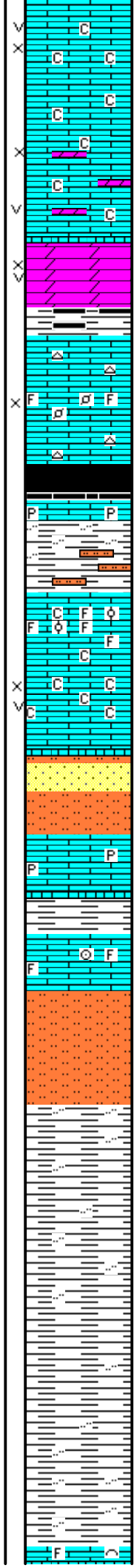
conn

4000

4050

4100

4150



LM; tan to buff, med to cse xln, scat spar calc xtals, occ sucrosic text - dolomitic ip, gd interxln w/vug por, dull yel min fluor, ns.

DOL; lt brn, sucrosic, gd interxln w/scat vug por, lt yel min fluor, no stn or odor, ns.

SH; med to dk gy, trc blk, platy

LM; tan to lt brn, med xln w/scat foss mat, poor to fair interpart por, scat lt yel min fluor only, occ gy cht, no stn or odor, ns.

HEEBNER SHALE 4044(-1824)

SH; blk, carb, gassy ip.
LM; med brn, hd, pyr ip, tite

SH; grn, silty, firm

TORONTO 4062(-1838)

LM; lt brn, tan, foss ip, scat oolitic lmst w/fair oomoldic por, minor chalky mtx, dull yel min fluor only, no stn or odor, no gas kick, ns.

LM; off wh, wh, buff, med xln, v. chalky - soft, gd interxln w/scat vug por, lt yel min fluor, no stn or odor, no gas kick, ns.

DOUGLAS SHALE 4085(-1865)

SLTST/SS; lt gy, vf to gr qtz, mica, most well cem, interbdd sltst, firm, poor/no intergran por, no stn, ns.

LM; tan to lt gy, gy brn, most dense, micritic, blocky, rarely pyr, no fluor, tite

LM; med to dk brn, foss ip, v. hd, tite

SLTST; lt gy, gy grn, firm, occ mica

SH; lt to med gy, firm, platy, occ silty

SH; lt to med gy, firm, most smooth, rarely silty

SH; med gy, most smooth, occ silty

BROWN LMST. 4196(-1976)

TG, C1-C5

TG

C1

C2

C3

17 Unit Incr. Shale

C4

Gas Test at Extractor

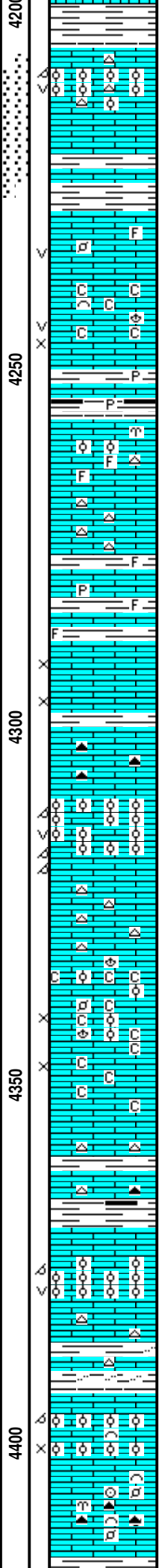
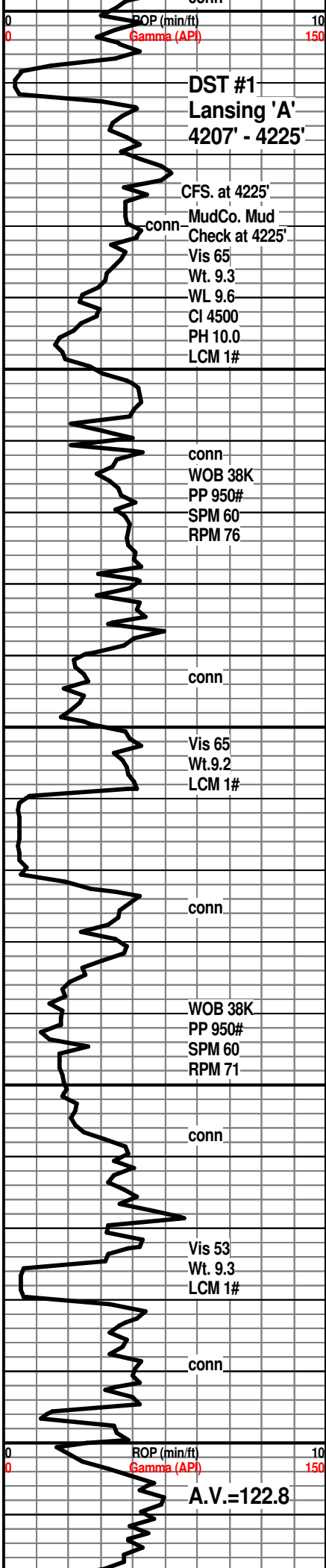
TG

C1

C2

C3

C4



LANSING 'A' 4205(-1985)
LM; med to dk brn, oolitic, med to lrg moldic por, fri - breaks v. easily/brittle ip, scat vug por, some oolitic cht, med yel fluor, some rextalized, no vis oil stn, no odor, sev. gas bubbles in a few samples

DST #1: Lansing 'A' 4207' - 4225'

LANSING 'B' 4228(-2008)
LM; off wh, tan, lt brn, foss ip, most well cem, few pcs. w/blk tar/gils., poor small vug por, lt yel fluor, no live shows, no odor

LM; tan to lt gy, off wh, foss, some well dev. vug and interpart por, chalky mtx, dull yel min fluor, no stn or odor, no gas kick, ns.

SH; med to dk gy, trc blk, pyr ip, fiss

LM; lt gy to lt brn, fxl n, scat foss mat, most well cem, no vis por, dull yel to no fluor, scat tan cht, no stn or odor, ns.

LM; med to dk brn, dense, pyr ip, tite

SH; grn, gy grn, fiss, occ foss

LM; off wh, med to cse xln, some rhombic dolo, fair to gd interxln por, minor chalky mtx, dull yel to no fluor, no stn or odor, ns.

LM; med brn, hd, occ smoky cht, tite

LANSING 'G' POROSITY 4309(-2089)
LM; tan to med brn, oolitic, small to med size moldic por - well developed, occ vug por, brittle ip, much rextalized, dull yel min fluor only, no stn or odor, barren, no sample shows

LM; med brn, hd, cherty ip, tite

LM; tan to off wh, wh, foss - partly oolitic, much soft chalk and chalky mtx, interbdd med xln lmst w/scat gd interxln por, most w/dull yel fluor, ns.

LM; med to dk brn, hd, micritic, cherty ip, tite

SH; med to dk gy, trc blk, sticky/waxy

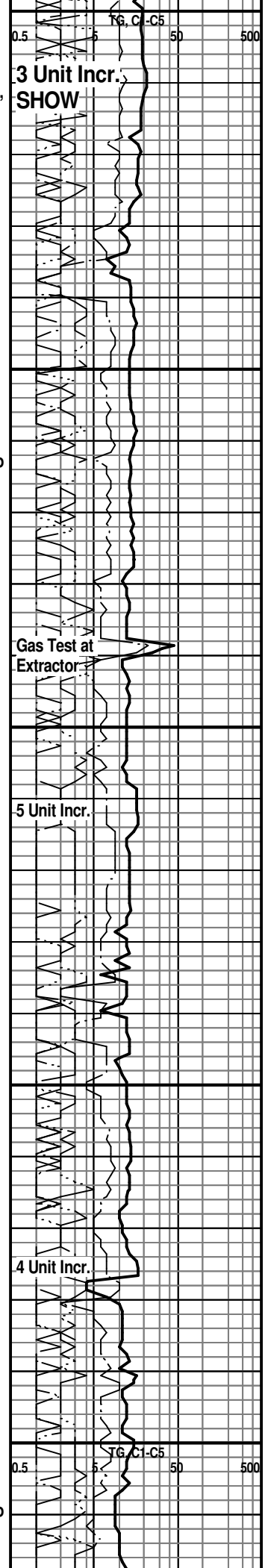
LANSING/K.C. 'H' 4370(-2150)
LM; tan to lt gy, lt brn, oolitic, med size moldic por, some oolitic(w/ooids intact), fair/gd oomoldic por, brittle/fri, scat vug por, dull yel fluor, no stn or odor, no sample shows

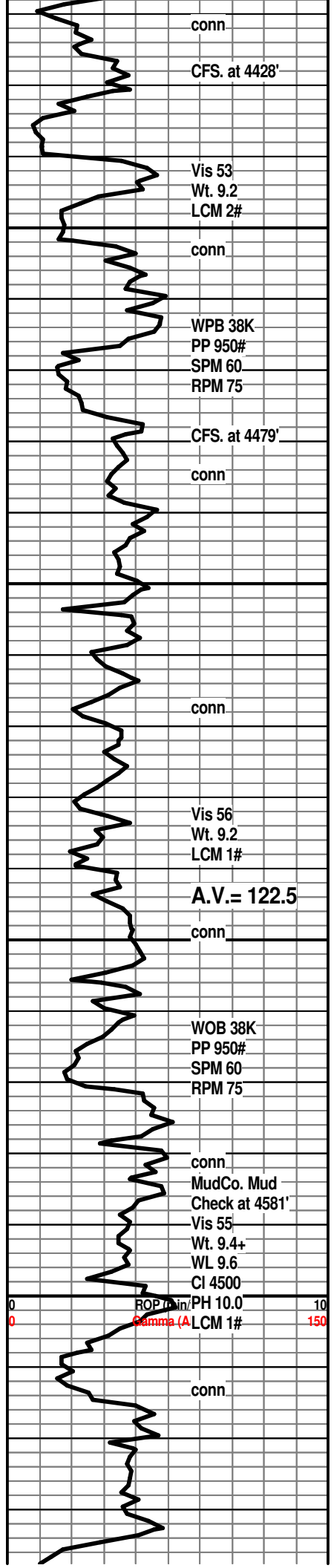
SH; med gy, firm, occ silty

LM; lt brn, foss-oolitic, most well cem, poor/fair oomoldic and interpart por, scat lt yel fluor, no stn or odor, no gas kick, barren, ns.

LM; tan to lt brn, foss, well cem ooids and foss hash, hd, interbdd tan to amber cht, dull yel min fluor only, no vis por, ns.

K.C. 'I' 4418(-2108)





conn

CFS. at 4428'

Vis 53
Wt. 9.2
LCM 2#

conn

WPB 38K
PP 950#
SPM 60
RPM 75

CFS. at 4479'

conn

conn

Vis 56
Wt. 9.2
LCM 1#

A.V. = 122.5

conn

WOB 38K
PP 950#
SPM 60
RPM 75

conn

MudCo. Mud
Check at 4581'
Vis 55
Wt. 9.4+
WL 9.6
CI 4500

ROP (ft/min) PH 10.0
Gamma (A) LCM 1#

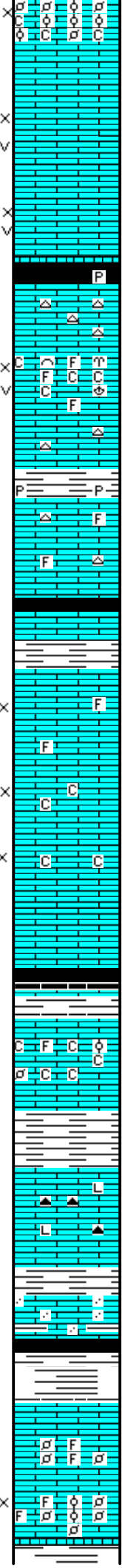
conn

4450

4500

4550

4600



R.C. 1 4410(-2130)
LM; off wh, tan, finely pelletal, abnt small ooids, loosely cem, fair to gd interpart por, trc blk tar/gils., lt to occ med yel fluor, chalky soft ip, no odor, no gas kick

LM; off wh, lt gy, buff, gran to med xln, well dev. vug and interxln por, foss ip, scat lt yel min fluor, no stn or odor, ns.

LM; tan to buff, fxln to sucrosic text, fair interxln w/occ vug por, no fluor, no stn or odor, ns.

SH; dk gy to blk, fiss, pyr ip.

K.C. 'J' DENNIS 4458(-2238)

LM; tan to lt brn, blocky, hd, cherty ip, no por, ns.

LM; off wh, cream, buff, foss, fair interpart por, scat small vug por, dull yel fluor, occ soft chalky mtx, no stn or odor, barren, no sample shows

SH; med to dk gy, firm, occ pyr

LM; tan to cream, lt brn, most dense, rare foss mat, scat wh cht, no vis por, ns.

STARK SHALE 4502(-2282)

SH; blk, carb ip, trc gas

SWOPE 4512(-2292)

LM; off wh, tan, med xln, rarely foss, scat fair interxln por, no stn or odor, dull yel min fluor only, n.s

LM; off wh, tan to cream, med xln, occ cse spar calc xtals, fair to poor interxln por, minor chalky mtx, dull yel min fluor, no stn or odor, no gas kick, ns.

LM; tan to lt gy, occ buff, most dense, micritic, occ gy cht, tite

SH; blk, carb ip, fiss

HERTHA 4561(-2341)

LM; off wh, tan, fine to med xln, fair to poor interxln por, chalky, scat foss mat, dull yel min fluor, no stn or odor, ns.

SH; grn, gy grn, some red-brn, platy

LM; med to dk brn, occ gy brn, dense, litho, scat amber to blk pyr cht, tite

BASE KANSAS CITY 4596(-2376)

SH; grn, gy grn, trc dk gy-blk, firm

LM; med/dk brn, dense, some argil, gritty text

SH; varic: blk, maroon, grn, rust red, platy to flakey

PLEASANTON 4615(-2395)

LM; lt gy, pale grn, off wh, most dense-micritic, blocky, interbdd foss lmsst - well cem, lt yel min fluor, no stn or odor, ns.

LM; off wh, tan, lt gy, foss, scat pellets/small ooids, poor interpart por, occ chalky mtx, lt yel min fluor, no stn or odor, no gas kick, ns.

SH; varic: grn, blk, rust red, soft-flakey

4 Unit Incr. Shale

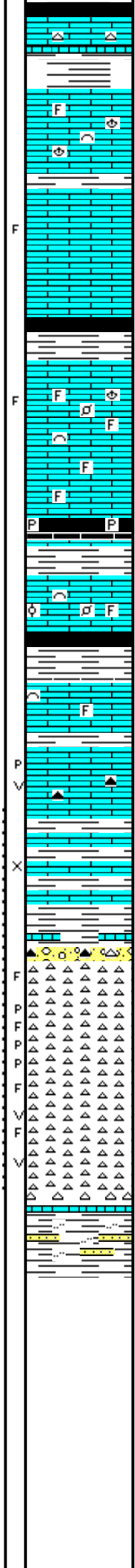
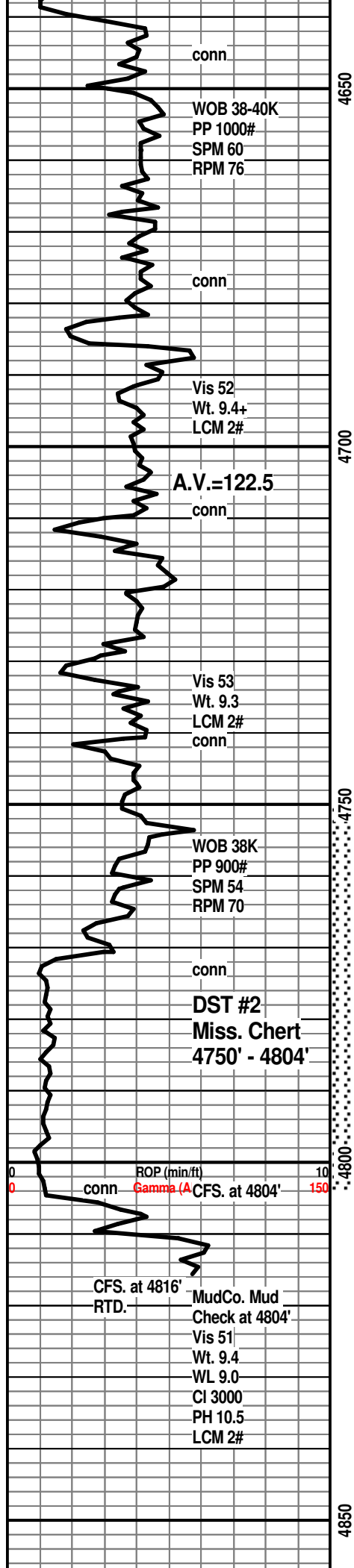
3 Unit Incr.

22 Unit Incr. Shale

Recycle Shale

11 Unit Incr. Shale

0.5 5 10 50 500
C1-C5



MARMATON 4640(-2420)
 LM; tan to lt brn, micritic, hd, scat gy foss cht
 SH; varic, pred. grn, maroon, brn

LM; lt brn, off wh, foss to fxln, most dense, no vis por, dull to occ lt yel fluor, no stn or odor, ns.

LM; tan to lt brn, buff, foss ip, most dense-micritic, trc frags, few pcs w/blk dead oil/tar/gils. on frac faces, spotty med yel fluor, no odor, no live shows

SH; blk, carb ip, fiss, much varic shales

PAWNEE 4688(-2468)
 LM; tan to lt brn, foss ip, much dense - micritic, trc frags, trc blk dead oil/tar, no live shows of oil or gas, no odor, scat lt yel fluor

LM; lt to med brn, most dense, hd, rarely foss, no vis por, no fluor, no stn or odor, ns.

SH; blk, fiss, gassy ip, pyr

LM; med brn, hd, most micritic, blocky, occ well cem foss, no vis por, no stn or odor, ns.

CHEROKEE SHALE 4726(-2506)
 SH; blk and varic: grn, maroon, gy, platy

LM; tan to lt brn, fxln, occ foss, most well cem, no vis por, most tite, dull yel fluor, ns.

LM; tan to buff, fxln, fair p-p and small vug por, scat dk brn spotted oil stn, med yel fluor, faint odor, scat org/amber cht w/fracs and oil stn

LM; med brn, fxln, fair interxln por, med brn oil stn, SSFO, sl gassy, med yel fluor, spotted to even oil stn, no gas kick

SH; varic, rust red, grn, some weathered lmst

MISSISSIPPI 4771(-2551)
 CHT; wh, lt gy, trans, rare org, fresh and trip(75%fresh, 25% trip), frags, lt yel fluor, faint gassy odor, spotted med brn oil stn, VSSFO

CHT; wh, lt gy, pale yel, fresh and trip, spotted live oil stn, frags and trip(p-p) por, scat brite yel fluor, faint gassy odor, some blk dead oil/gils.

CHT; wh, lt gy, opaque,(fresh 65% and trip 35%), fresh cht has weathered edges w/live oil stn, spotty brite yel fluor, gas bubbles, SSFO, faint gas odor, gd cut, some frags and vug por

DST #2: Miss. Chert 4750' - 4804'
KINDERHOOK SHALE 4806(-2586)
 SH; lt gy grn, firm, silty to sandy, some sticky

RTD. 4816' at 5:15 PM. 2/23/11

LTD. 4817'

Halliburton DIL, NEU/DEN, Microlog

