



**TRILOBITE
TESTING, INC**

DRILL STEM TEST REPORT

Strata Exploration

#1-29 Rosenberger

PO Box 401
Fairfield, IL 62837

29-27S-18W Kiowa

ATTN: Jon Christensen

Job Ticket: 041589

DST#: 2

Test Start: 2011.02.23 @ 04:29:15

GENERAL INFORMATION:

Formation: **Mississippi**

Deviated: No Whipstock: ft (KB)

Time Tool Opened: 07:15:00

Time Test Ended: 13:08:00

Test Type: Conventional Bottom Hole

Tester: Leal Cason

Unit No: 45

Interval: 4750.00 ft (KB) To 4804.00 ft (KB) (TVD)

Reference Elevations: 2220.00 ft (KB)

Total Depth: 4804.00 ft (KB) (TVD)

2211.00 ft (CF)

Hole Diameter: 7.88 inches Hole Condition: Good

KB to GR/CF: 9.00 ft

Serial #: 6798 Inside

Press @ Run Depth: 37.74 psig @ 4751.00 ft (KB)

Capacity: 8000.00 psig

Start Date: 2011.02.23 End Date: 2011.02.23

Last Calib.: 2011.02.23

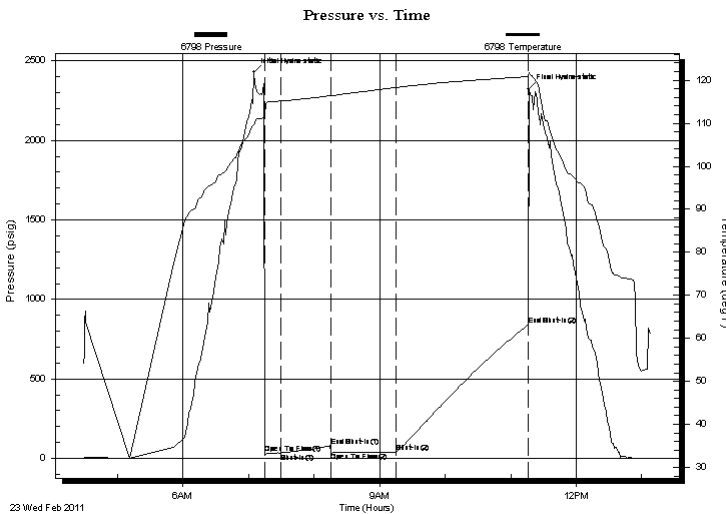
Start Time: 04:29:16 End Time: 13:08:00

Time On Btm: 2011.02.23 @ 07:05:00

Time Off Btm: 2011.02.23 @ 11:16:45

TEST COMMENT: IF: Fair Blow, BOB in 13 minutes
IS: Bled Off, 4 1/2 inch blow back
FF: Fair Blow, BOB in 22 minutes
FS: Bled Off, No Blow back

PRESSURE SUMMARY



Time (Min.)	Pressure (psig)	Temp (deg F)	Annotation
0	2427.58	109.76	Initial Hydro-static
10	29.88	111.75	Open To Flow (1)
25	35.70	115.19	Shut-In(1)
71	79.91	116.41	End Shut-In(1)
71	40.11	116.41	Open To Flow (2)
131	37.74	118.30	Shut-In(2)
251	841.39	120.82	End Shut-In(2)
252	2324.16	121.82	Final Hydro-static

Recovery

Length (ft)	Description	Volume (bbl)
0.00	786 Feet GIP	0.00
20.00	SGCM 2%G 98%M	0.10

Gas Rates

Choke (inches)	Pressure (psig)	Gas Rate (Mcf/d)



**TRILOBITE
TESTING, INC**

DRILL STEM TEST REPORT

FLUID SUMMARY

Strata Exploration

#1-29 Rosenberger

PO Box 401
Fairfield, IL 62837

29-27S-18W Kiowa

Job Ticket: 041589

DST#: 2

ATTN: Jon Christensen

Test Start: 2011.02.23 @ 04:29:15

Mud and Cushion Information

Mud Type: Gel Chem

Cushion Type:

Oil API:

deg API

Mud Weight: 9.00 lb/gal

Cushion Length:

ft

Water Salinity:

ppm

Viscosity: 54.00 sec/qt

Cushion Volume:

bbf

Water Loss: 9.59 in³

Gas Cushion Type:

Resistivity: ohm.m

Gas Cushion Pressure:

psig

Salinity: 4500.00 ppm

Filter Cake: 0.20 inches

Recovery Information

Recovery Table

Length ft	Description	Volume bbf
0.00	786 Feet GIP	0.000
20.00	SGCM 2%G 98%M	0.098

Total Length: 20.00 ft Total Volume: 0.098 bbf

Num Fluid Samples: 0

Num Gas Bombs: 0

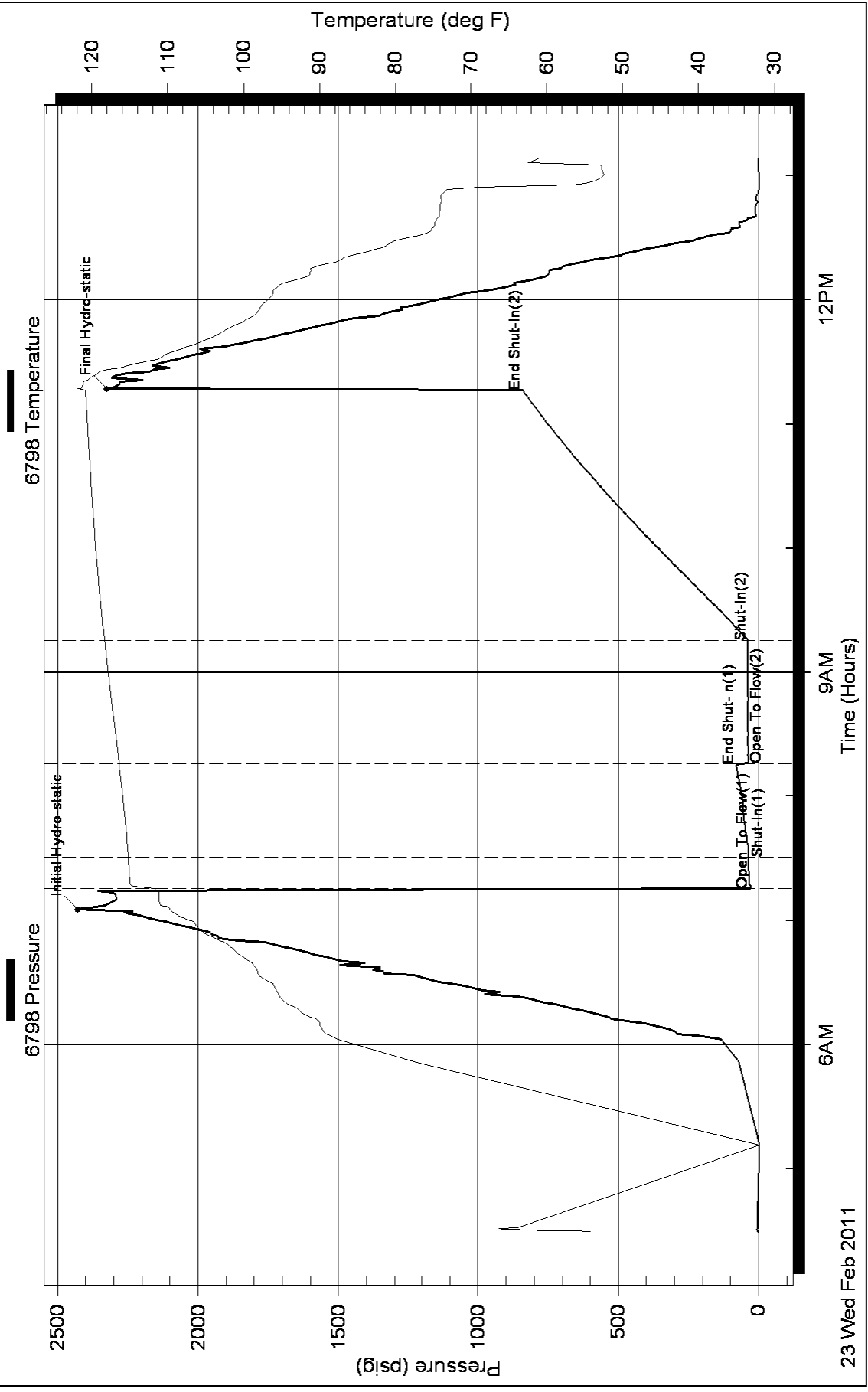
Serial #:

Laboratory Name:

Laboratory Location:

Recovery Comments:

Pressure vs. Time



23 Wed Feb 2011

6AM

9AM

12PM

Time (Hours)