

Tim J. Lauer

Petroleum Geologist

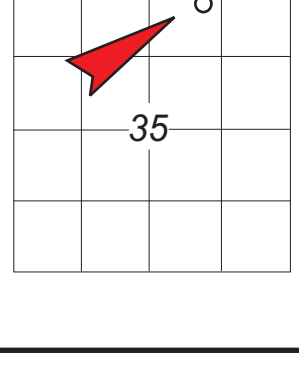
GEOLOGIST'S REPORT

DRILLING TIME AND SAMPLE LOG

COMPANY	Sentinel Petroleum, Inc.		
LEASE	#1 Wahrman		
FIELD			
LOCATION	1688' FEL, 335' FNL of Section		
SEC	35	TWSP	9s RGE 23w
COUNTY	Graham	STATE	Kansas
CONTRACTOR	Discovery Drilling Rig #1		
SPUD	3-22-2011	COMP	3-27-2011
RTD	3965'	LTD	3964'
MUD UP	3215'	TYPE MUD	Chemical
SAMPLES SAVED FROM	3400'	TO	RTD
DRILLING TIME KEPT FROM	3400'	TO	RTD
SAMPLES EXAMINED FROM	3400'	TO	RTD
GEOLOGICAL SUPERVISION FROM	3505'	TO	RTD
GEOLOGIST ON WELL	Tim J. Lauer		

ELEVATIONS	KB 2403'
DF	
GL	2395'
Measurements Are All From	Kelly Bushing
CASING	
CONDUCTOR	
SURFACE	8-5/8" @ 267'
PRODUCTION	5-1/2" @ 3960'+/-
ELECTRICAL SURVEYS	Superior: DIL, DPL, ML, PE, Sonic (Engr: Jeff Groneweg)

FORMATION TOPS	ELECTRIC LOG	SAMPLE LOG
Anhydrite	1976 (+423)	1978 (+425)
Topeka	3434 (-1031)	3433 (-1030)
Heebner	3652 (-1249)	3651 (-1248)
Toronto	3675 (-1272)	3675 (-1272)
Lansing	3687 (-1284)	3686 (-1283)
Base Ks. City	3910 (-1507)	3912 (-1509)
Total Depth	3964 (-1561)	3965 (-1562)



COMPANY & WELL Sentinel Petroleum, Inc. #1 Wahrman ELEVATIONS
 LOCATION 1688' FEL, 335' FNL of Section KB 2403'
 SEC 35 TWSP 9s RGE 23w STATE Kansas GL 2395'
 COUNTY Graham

REMARKS

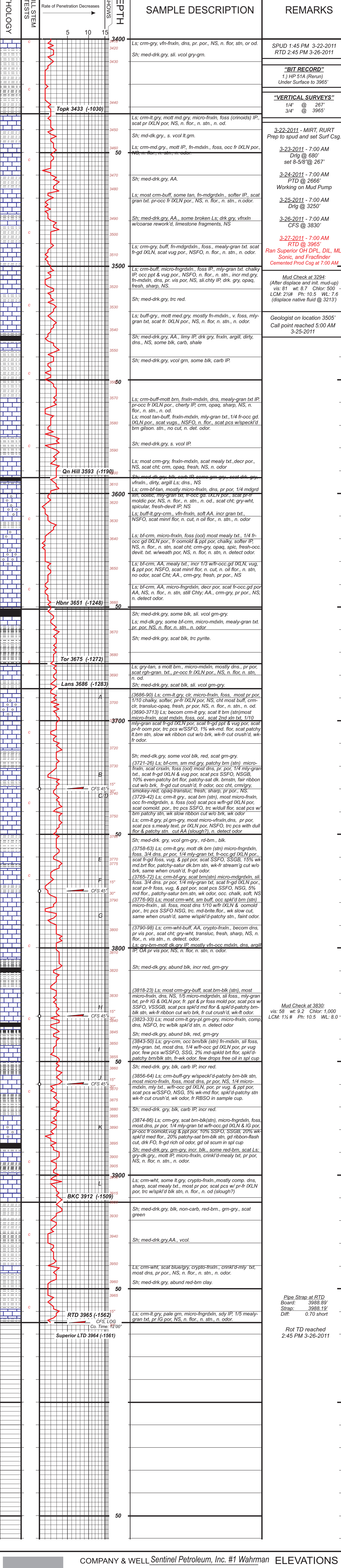
Due to sample shows and log calculations, operator elected to set production casing to further test the location.

Respectfully submitted,

Tim J. Lauer
 Tim J. Lauer
 3-27-2011

LEGEND

	Anhydrite		Sandstone		Limestone		Shale		Carb Sh		Cherty LS		Chert		Dolomite
--	-----------	--	-----------	--	-----------	--	-------	--	---------	--	-----------	--	-------	--	----------



COMPANY & WELL	Sentinel Petroleum, Inc. #1 Wahrman			ELEVATIONS	KB 2403'
LOCATION	335' FNL, 1688' FEL of Section			GL	2395'
SEC	35	TWSP	9s RGE 23w		
COUNTY	Graham	STATE	Kansas		