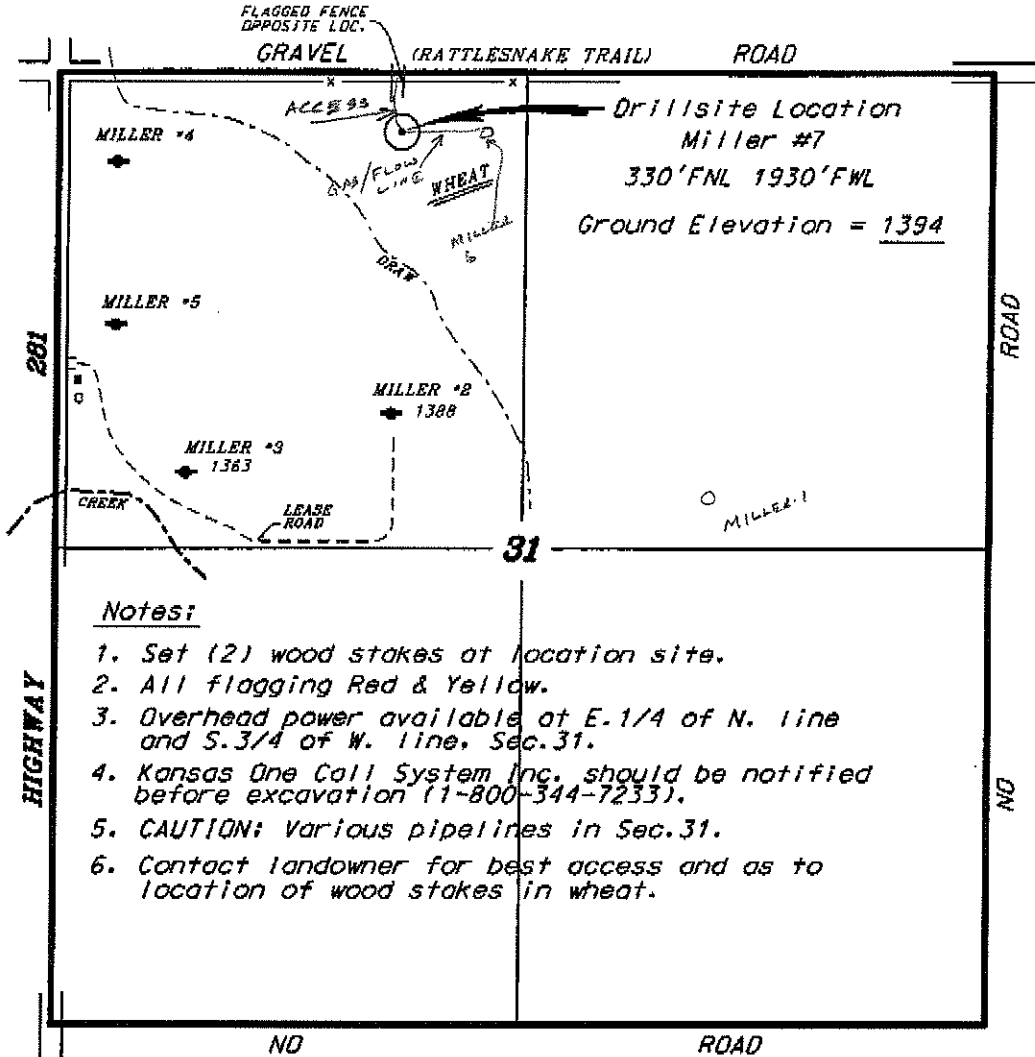
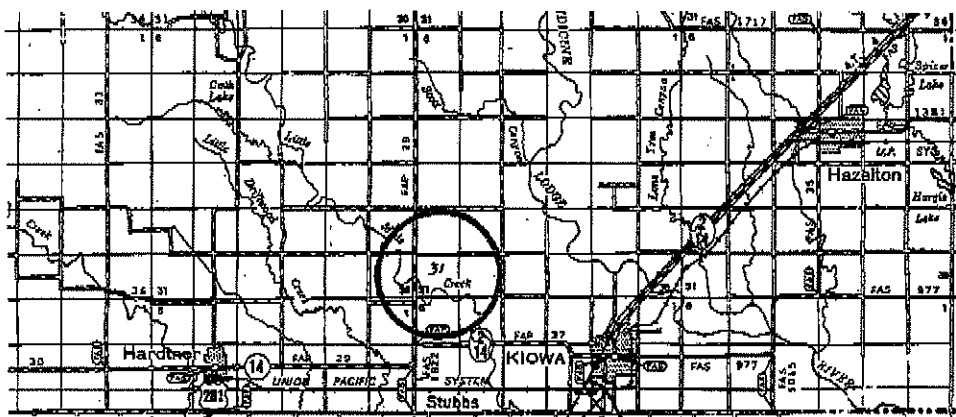


WOOLSEY OPERATING COMPANY, LLC
MILLER LEASE
NW. 1/4, SECTION 31, T34S, R11W
BARBER COUNTY, KANSAS



* Ingress and egress to location as shown on this plat is for usage only and may not be legally opened for public use. Contact landowner, tenant and county road department for access.



* Contouring data is based upon the best maps and photographs available to us and upon a regular section of land containing 360 acres.
 * Approximate section lines were determined using the normal standards of care of oilfield surveyors practicing in the state of Kansas. The section corners, which establish the precise section lines, were not necessarily located, and the exact location of the wellsite location in the section is not guaranteed. Therefore, the operator securing this service and occupying this site and all other parties relying thereon agree to hold Central Kansas Oilfield Services, Inc., its officers and employees harmless from all losses, costs and expenses and said parties released from any liability from negligent or consequential damages.
 * Elevations derived from National Geodetic Vertical Datum.

Date May 4, 2011