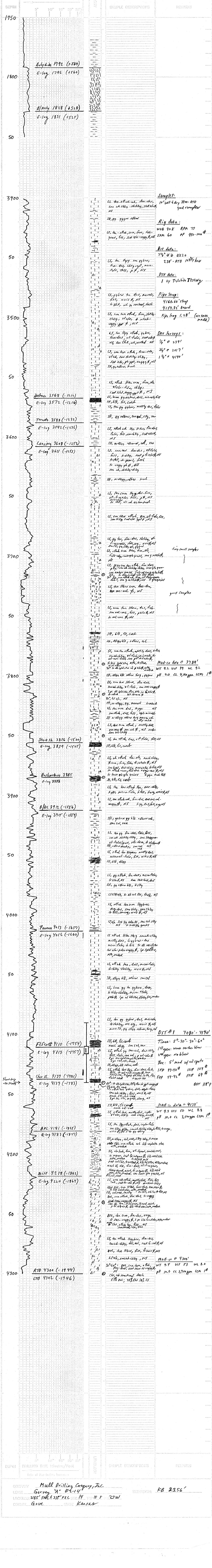


COMPANY: Mull Drilling Company, Inc.
 LEASE: Garvey #A #2-14
 FIELD: Willard
 LOCATION: 2185' FNL & 335' FEL
 SECTION: 14 T19S R15E SEC 37 W
 COUNTY: Gove STATE: Kansas
 CORRELATION: Dale Dig. Log #2
 DATE: 2/21/11
 WELL NO: 15-063-21882
 RIG NO: 4900
 LTO: 4302L
 DRILLING THE REPT FROM: 1700-1900', 3400', 3900', 4300'
 SAMPLES EXAMINED FROM: 3400' TO 4300'
 GEOLOGICAL SUPERVISION FROM: 3550' TO 4300'
 GEOLOGIST ON WELL: Phil Akey, P.G.
 REFERENCE WELLS:
 Formation TOS LGS SAMPLES
 Anhydrite 1792 (+589) 3572 -1216 3568
 E-log 1796 (+560) 3571 -1255 3568
 B/only 1828 (+520) 3571 -1255 3568
 E-log 1831 (+525) 3571 -1255 3568
 Permian 3588 (-1232) 3571 -1255 3568
 E-log 3592 (-1236) 3571 -1255 3568
 Lansing 3608 (-1252) 3571 -1255 3568
 E-log 3611 (-1255) 3571 -1255 3568
 Sta-sh 3856 (-1500) 3571 -1255 3568
 E-log 3859 (-1505) 3571 -1255 3568
 Hurlingham 3885 3571 -1255 3568
 E-log 3888 3571 -1255 3568
 B/KC 3912 (-1556) 3571 -1255 3568
 E-log 3915 (-1559) 3571 -1255 3568
 Pauman 4013 (-1657) 3571 -1255 3568
 E-log 4016 (-1660) 3571 -1255 3568
 Miss 4218 (-1862) 3571 -1255 3568
 E-log 4220 (-1864) 3571 -1255 3568
 RTO 4300 (-1944) 3571 -1255 3568
 LTO 4302L (-1946) 3571 -1255 3568

REMARKS: The Mull Drilling Garvey #A #2-14 ran structurally true & the reference well on the Mull-Garvey #1-13. Upon review of all samples, DST results, and E-log evaluation, it was decided to plug between this well.

Phil Akey, P.G.

Well # 15-063-21882



COMPANY: Mull Drilling Company, Inc.
 LEASE: Garvey #A #2-14
 LOCATION: 2185' FNL & 335' FEL SEC 14 T19S R15E
 COUNTY: Gove STATE: Kansas
 ELEVATION: KB 2356'
 DRILLING TIME (Minutes/Foot): 2.7W
 WELL NO: 15-063-21882