



DRILL STEM TEST REPORT

Prepared For: **MULL DRILLING COMPANY INC**

1700 N WATERFRONT PKWY BLDG 1200
WICHITA KS 67206

ATTN: KEVIN KESSLER

10-15S-27W

JLT 1-10

Start Date: 2011.03.06 @ 17:00:00

End Date: 2011.03.06 @ 21:33:00

Job Ticket #: 1075 DST #: 2

Eagle Testers LLC.

P.O.Box 1011, Great Bend, KS 67530

620-617-7548

Printed: 2011.03.06 @ 17:53:01

MULL DRILLING COMPANY INC
JLT 1-10
10-15S-27W
DST # 2
LKC-HH-
2011.03.06



DRILL STEM TEST REPORT

MULL DRILLING COMPANY INC

JLT 1-10

1700 N WATERFRONT PKWY BLDG 1200
WICHITA KS 67206

10-15S-27W

ATTN: KEVIN KESSLER

Job Ticket: 1075

DST#: 2

Test Start: 2011.03.06 @ 17:00:00

GENERAL INFORMATION:

Formation: **LKC -H-I-**

Deviated: No Whipstock: ft (KB)

Time Tool Opened: 18:09:30

Time Test Ended: 21:33:00

Test Type: Conventional Bottom Hole (Initial)

Tester: DAVID NICHOLS

Unit No: 15

Interval: 3805.00 ft (KB) To 3870.00 ft (KB) (TVD)

Reference Elevations: 2440.00 ft (KB)

Total Depth: 3870.00 ft (KB) (TVD)

2434.00 ft (CF)

Hole Diameter: 7.88 inches Hole Condition: Fair

KB to GR/CF: 6.00 ft

Serial #: 6666 Outside

Press @ Run Depth: 70.80 psig @ 3867.00 ft (KB)

Capacity: 5000.00 psig

Start Date: 2011.03.06

End Date:

2011.03.06

Last Calib.:

2011.03.06

Start Time: 17:01:00

End Time:

21:33:00

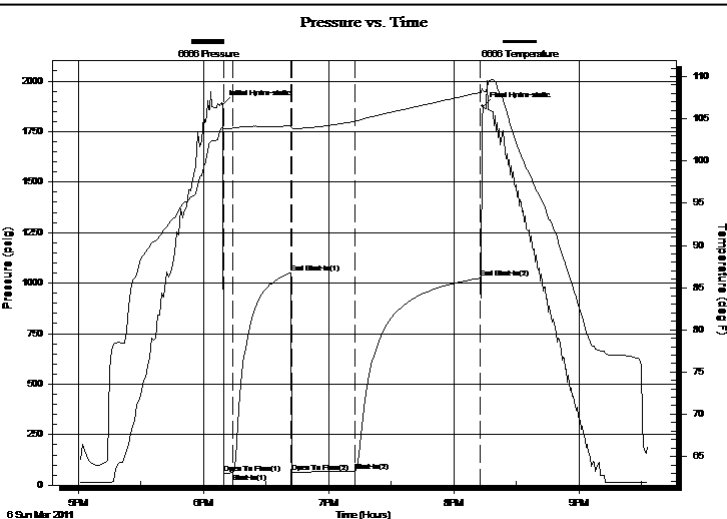
Time On Btm:

2011.03.06 @ 18:09:00

Time Off Btm:

2011.03.06 @ 20:14:00

TEST COMMENT: 5-INITIAL OPENING SURFACE BLOW
30-INITIAL SHUT IN NO BLOW BACK
30-FINAL OPENING WEAK SURFACE BLOW
60-FINAL SHUT IN NO BLOW BACK



PRESSURE SUMMARY

| Time (Min.) | Pressure (psig) | Temp (deg F) | Annotation |
|-------------|-----------------|--------------|----------------------|
| 0 | 1885.07 | 104.07 | Initial Hydro-static |
| 1 | 59.33 | 103.78 | Open To Flow (1) |
| 5 | 60.68 | 103.89 | Shut-In(1) |
| 33 | 1052.49 | 104.15 | End Shut-In(1) |
| 34 | 62.73 | 103.91 | Open To Flow (2) |
| 64 | 70.80 | 104.70 | Shut-In(2) |
| 124 | 1023.89 | 108.12 | End Shut-In(2) |
| 125 | 1874.99 | 108.30 | Final Hydro-static |

Recovery

| Length (ft) | Description | Volume (bbl) |
|-------------|-------------|--------------|
| 15.00 | MUD 100%MUD | 0.07 |
| | | |
| | | |
| | | |
| | | |

Gas Rates

| | Choke (inches) | Pressure (psig) | Gas Rate (Mcf/d) |
|--|----------------|-----------------|------------------|
| | | | |



DRILL STEM TEST REPORT

MULL DRILLING COMPANY INC

JLT 1-10

1700 N WATERFRONT PKWY BLDG 1200
WICHITA KS 67206

10-15S-27W

Job Ticket: 1075

DST#: 2

ATTN: KEVIN KESSLER

Test Start: 2011.03.06 @ 17:00:00

GENERAL INFORMATION:

Formation: **LKC -H-I-**

Deviated: No Whipstock: ft (KB)

Time Tool Opened: 18:09:30

Time Test Ended: 21:33:00

Test Type: Conventional Bottom Hole (Initial)

Tester: DAVID NICHOLS

Unit No: 15

Interval: 3805.00 ft (KB) To 3870.00 ft (KB) (TVD)

Reference Elevations: 2440.00 ft (KB)

Total Depth: 3870.00 ft (KB) (TVD)

2434.00 ft (CF)

Hole Diameter: 7.88 inches Hole Condition: Fair

KB to GR/CF: 6.00 ft

Serial #: 6651

Inside

Press @ Run Depth: 1026.65 psig @ 3866.00 ft (KB)

Capacity: 5000.00 psig

Start Date: 2011.03.06

End Date:

2011.03.06

Last Calib.:

2011.03.06

Start Time: 17:01:00

End Time:

21:34:30

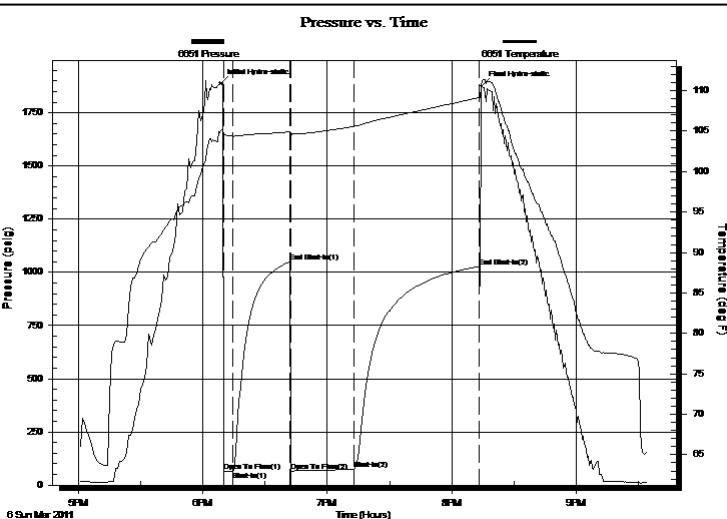
Time On Btm:

2011.03.06 @ 18:08:30

Time Off Btm:

2011.03.06 @ 20:14:30

TEST COMMENT: 5-INITIAL OPENING SURFACE BLOW
30-INITIAL SHUT IN NO BLOW BACK
30-FINAL OPENING WEAK SURFACE BLOW
60-FINAL SHUT IN NO BLOW BACK



PRESSURE SUMMARY

| Time (Min.) | Pressure (psig) | Temp (deg F) | Annotation |
|-------------|-----------------|--------------|----------------------|
| 0 | 1888.32 | 105.07 | Initial Hydro-static |
| 2 | 63.47 | 104.64 | Open To Flow (1) |
| 6 | 64.47 | 104.38 | Shut-In(1) |
| 34 | 1050.17 | 104.92 | End Shut-In(1) |
| 34 | 66.80 | 104.23 | Open To Flow (2) |
| 65 | 74.11 | 105.61 | Shut-In(2) |
| 125 | 1026.65 | 109.13 | End Shut-In(2) |
| 126 | 1876.01 | 111.25 | Final Hydro-static |

Recovery

| Length (ft) | Description | Volume (bbl) |
|-------------|-------------|--------------|
| 15.00 | MUD 100%MUD | 0.07 |
| | | |
| | | |
| | | |
| | | |

Gas Rates

| | Choke (inches) | Pressure (psig) | Gas Rate (Mcf/d) |
|--|----------------|-----------------|------------------|
| | | | |



DRILL STEM TEST REPORT

TOOL DIAGRAM

MULL DRILLING COMPANY INC
 1700 N WATERFRONT PKWY BLDG 1200
 WICHITA KS 67206
 ATTN: KEVIN KESSLER

JLT 1-10
10-15S-27W
 Job Ticket: 1075 **DST#: 2**
 Test Start: 2011.03.06 @ 17:00:00

Tool Information

| | | | | | |
|---------------------------|--------------------|-----------------------|--------------------------------|------------------------|-------------|
| Drill Pipe: | Length: 3659.00 ft | Diameter: 3.88 inches | Volume: 53.51 bbl | Tool Weight: | 2000.00 lb |
| Heavy Wt. Pipe: | Length: 0.00 ft | Diameter: 0.00 inches | Volume: 0.00 bbl | Weight set on Packer: | 20000.00 lb |
| Drill Collar: | Length: 120.00 ft | Diameter: 2.25 inches | Volume: 0.59 bbl | Weight to Pull Loose: | 70000.00 lb |
| | | | <u>Total Volume: 54.10 bbl</u> | Tool Chased | 0.00 ft |
| Drill Pipe Above KB: | 2.75 ft | | | String Weight: Initial | 58000.00 lb |
| Depth to Top Packer: | 3805.00 ft | | | Final | 58000.00 lb |
| Depth to Bottom Packer: | ft | | | | |
| Interval between Packers: | 65.00 ft | | | | |
| Tool Length: | 93.75 ft | | | | |
| Number of Packers: | 2 | Diameter: 6.75 inches | | | |

Tool Comments:

| Tool Description | Length (ft) | Serial No. | Position | Depth (ft) | Accum. Lengths |
|------------------|-------------|------------|----------|------------|-------------------------------|
| Shut-in tool | 5.00 | | | 3781.25 | |
| Hydraulic tool | 5.00 | | | 3786.25 | |
| Change over sub | 0.75 | | | 3787.00 | |
| Jars | 6.00 | | | 3793.00 | |
| Safety Joint | 2.00 | | | 3795.00 | |
| Packer | 5.00 | | | 3800.00 | 28.75 Bottom Of Top Packer |
| Packer | 5.00 | | | 3805.00 | |
| Anchor | 2.00 | | | 3807.00 | |
| change over sub | 0.75 | | | 3807.75 | |
| drill pipe | 31.50 | | | 3839.25 | |
| change over sub | 0.75 | | | 3840.00 | |
| anchor | 25.00 | | | 3865.00 | |
| Recorder | 1.00 | 6651 | Inside | 3866.00 | |
| Recorder | 1.00 | 6666 | Outside | 3867.00 | |
| bull plug | 3.00 | | | 3870.00 | 65.00 Bottom Packers & Anchor |

Total Tool Length: 93.75



DRILL STEM TEST REPORT

FLUID SUMMARY

MULL DRILLING COMPANY INC
1700 N WATERFRONT PKWY BLDG 1200
WICHITA KS 67206
ATTN: KEVIN KESSLER

JLT 1-10
10-15S-27W
Job Ticket: 1075 **DST#: 2**
Test Start: 2011.03.06 @ 17:00:00

Mud and Cushion Information

| | | | | | |
|--------------|----------------------|-----------------------|------|-----------------|---------|
| Mud Type: | Gel Chem | Cushion Type: | | Oil API: | deg API |
| Mud Weight: | 9.00 lb/gal | Cushion Length: | ft | Water Salinity: | ppm |
| Viscosity: | 52.00 sec/qt | Cushion Volume: | bbbl | | |
| Water Loss: | 7.20 in ³ | Gas Cushion Type: | | | |
| Resistivity: | ohm.m | Gas Cushion Pressure: | psig | | |
| Salinity: | 5900.00 ppm | | | | |
| Filter Cake: | inches | | | | |

Recovery Information

Recovery Table

| Length ft | Description | Volume bbl |
|--------------|-------------|---------------|
| 15.00 | MUD 100%MUD | 0.074 |

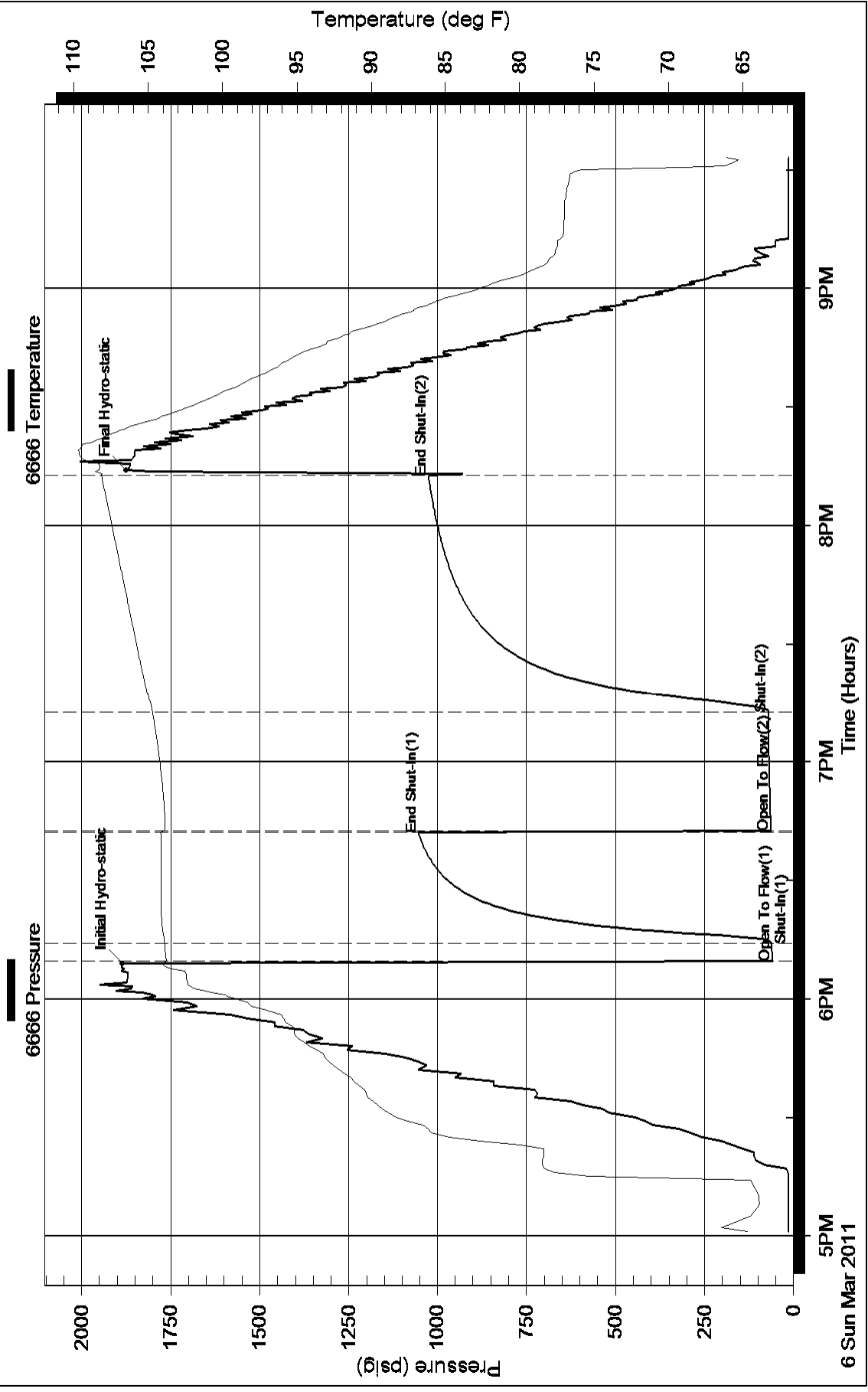
Total Length: 15.00 ft Total Volume: 0.074 bbl

Num Fluid Samples: 0 Num Gas Bombs: 0 Serial #:

Laboratory Name: Laboratory Location:

Recovery Comments:

Pressure vs. Time



Pressure vs. Time

