



DRILL STEM TEST REPORT

Prepared For: **MULL DRILLING COMPANY INC**

1700 N WATERFRONT PKWY BLDG 1200
WICHITA KS 67206

ATTN: KEVIN KESSLER

10-15S-27W

JLT 1-10

Start Date: 2011.03.09 @ 17:00:00

End Date: 2011.03.09 @ 22:06:30

Job Ticket #: 1003 DST #: 6

Eagle Testers LLC.

P.O.Box 1011, Great Bend, KS 67530

620-617-7548

Printed: 2011.03.09 @ 18:08:37

MULL DRILLING COMPANY INC
JLT 1-10
10-15S-27W
DST # 6
MISS
2011.03.09



DRILL STEM TEST REPORT

MULL DRILLING COMPANY INC

JLT 1-10

1700 N WATERFRONT PKWY BLDG 1200
WICHITA KS 67206

10-15S-27W

ATTN: KEVIN KESSLER

Job Ticket: 1003

DST#: 6

Test Start: 2011.03.09 @ 17:00:00

GENERAL INFORMATION:

Formation: **MISS**

Deviated: No Whipstock: ft (KB)

Time Tool Opened: 18:32:00

Time Test Ended: 22:06:30

Test Type: Conventional Bottom Hole (Initial)

Tester: DAVID NICHOLS

Unit No: 15 53 MRT DIGTION

Interval: 4165.00 ft (KB) To 4255.00 ft (KB) (TVD)

Reference Elevations: 2440.00 ft (KB)

Total Depth: 4255.00 ft (KB) (TVD)

2434.00 ft (CF)

Hole Diameter: 7.88 inches Hole Condition: Fair

KB to GR/CF: 6.00 ft

Serial #: 6666 Outside

Press @ RunDepth: 83.89 psig @ 4252.00 ft (KB)

Capacity: 5000.00 psig

Start Date: 2011.03.09

End Date: 2011.03.09

Last Calib.: 2011.03.09

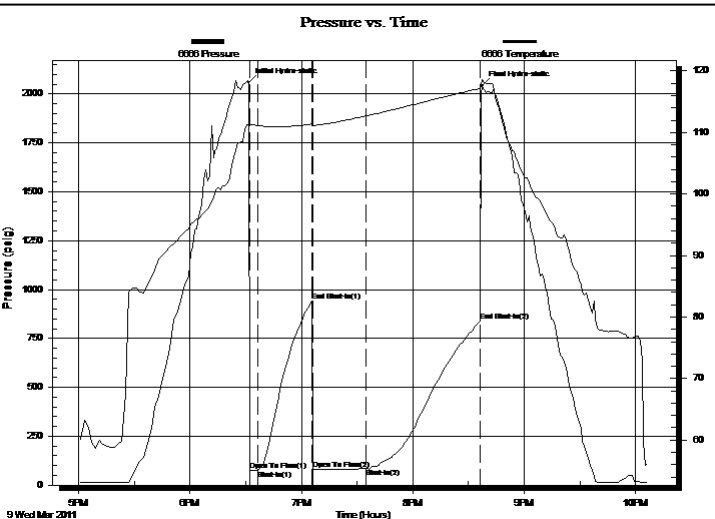
Start Time: 17:00:00

End Time: 22:06:30

Time On Btm: 2011.03.09 @ 18:31:30

Time Off Btm: 2011.03.09 @ 20:37:30

TEST COMMENT: 5-INITIAL OPENING WEAK BLOW BUILT TO 1/2 INCH INTO WATER
30-INITIAL SHUT IN NO BLOW BACK
30-FINAL OPENING VERY WEAK BLOW DIED AFTER 15 MINS
60-FINAL SHUT IN NO BLOW BACK



PRESSURE SUMMARY

Time (Min.)	Pressure (psig)	Temp (deg F)	Annotation
0	2060.34	111.31	Initial Hydro-static
1	74.96	111.18	Open To Flow (1)
5	77.13	111.14	Shut-In(1)
34	939.53	111.39	End Shut-In(1)
35	79.43	111.18	Open To Flow (2)
63	83.89	112.67	Shut-In(2)
125	836.81	117.16	End Shut-In(2)
126	2040.82	118.64	Final Hydro-static

Recovery

Length (ft)	Description	Volume (bbl)
10.00	MUD 100%MUD	0.05

Gas Rates

	Choke (inches)	Pressure (psig)	Gas Rate (Mcf/d)



DRILL STEM TEST REPORT

MULL DRILLING COMPANY INC

JLT 1-10

1700 N WATERFRONT PKWY BLDG 1200
WICHITA KS 67206

10-15S-27W

ATTN: KEVIN KESSLER

Job Ticket: 1003

DST#: 6

Test Start: 2011.03.09 @ 17:00:00

GENERAL INFORMATION:

Formation: **MISS**

Deviated: No Whipstock: ft (KB)

Time Tool Opened: 18:32:00

Time Test Ended: 22:06:30

Test Type: Conventional Bottom Hole (Initial)

Tester: DAVID NICHOLS

Unit No: 15 53 MRT DIGTION

Interval: 4165.00 ft (KB) To 4255.00 ft (KB) (TVD)

Reference Elevations: 2440.00 ft (KB)

Total Depth: 4255.00 ft (KB) (TVD)

2434.00 ft (CF)

Hole Diameter: 7.88 inches Hole Condition: Fair

KB to GR/CF: 6.00 ft

Serial #: 6651

Inside

Press @ Run Depth: 835.59 psig @ 4251.00 ft (KB)

Capacity: 5000.00 psig

Start Date: 2011.03.09

End Date: 2011.03.09

Last Calib.: 2011.03.09

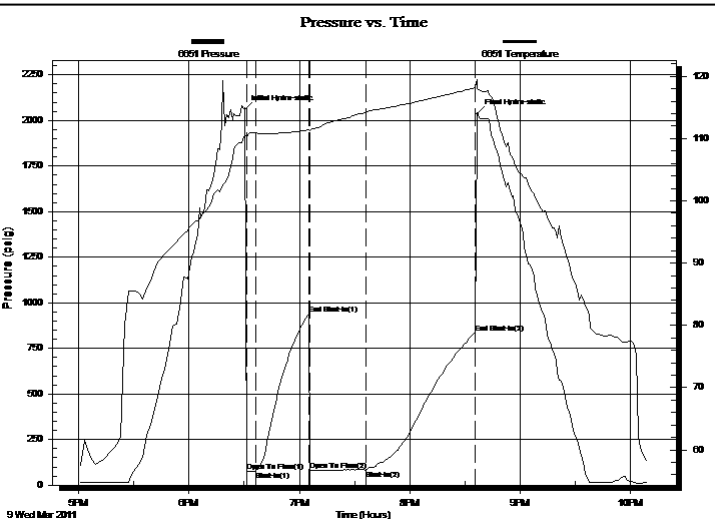
Start Time: 17:00:00

End Time: 22:10:00

Time On Btm: 2011.03.09 @ 18:30:30

Time Off Btm: 2011.03.09 @ 20:37:00

TEST COMMENT: 5-INITIAL OPENING WEAK BLOW BUILT TO 1/2 INCH INTO WATER
30-INITIAL SHUT IN NO BLOW BACK
30-FINAL OPENING VERY WEAK BLOW DIED AFTER 15 MINS
60-FINAL SHUT IN NO BLOW BACK



PRESSURE SUMMARY

Time (Min.)	Pressure (psig)	Temp (deg F)	Annotation
0	2059.93	110.52	Initial Hydro-static
1	77.31	110.23	Open To Flow (1)
6	78.39	110.91	Shut-In(1)
35	938.38	111.37	End Shut-In(1)
35	81.22	111.20	Open To Flow (2)
66	83.46	114.25	Shut-In(2)
125	835.59	118.13	End Shut-In(2)
127	2036.45	118.17	Final Hydro-static

Recovery

Length (ft)	Description	Volume (bbl)
10.00	MUD 100%MUD	0.05

Gas Rates

	Choke (inches)	Pressure (psig)	Gas Rate (Mcf/d)



DRILL STEM TEST REPORT

TOOL DIAGRAM

MULL DRILLING COMPANY INC
 1700 N WATERFRONT PKWY BLDG 1200
 WICHITA KS 67206
 ATTN: KEVIN KESSLER

JLT 1-10
10-15S-27W
 Job Ticket: 1003 **DST#: 6**
 Test Start: 2011.03.09 @ 17:00:00

Tool Information

Drill Pipe:	Length: 4019.00 ft	Diameter: 3.88 inches	Volume: 58.77 bbl	Tool Weight:	2.00 lb
Heavy Wt. Pipe:	Length: 0.00 ft	Diameter: 0.00 inches	Volume: 0.00 bbl	Weight set on Packer:	20.00 lb
Drill Collar:	Length: 120.00 ft	Diameter: 2.25 inches	Volume: 0.59 bbl	Weight to Pull Loose:	70000.00 lb
			<u>Total Volume: 59.36 bbl</u>	Tool Chased	0.00 ft
Drill Pipe Above KB:	2.75 ft			String Weight: Initial	63000.00 lb
Depth to Top Packer:	4165.00 ft			Final	63000.00 lb
Depth to Bottom Packer:	ft				
Interval between Packers:	90.00 ft				
Tool Length:	118.75 ft				
Number of Packers:	2	Diameter: 6.75 inches			

Tool Comments:

Tool Description	Length (ft)	Serial No.	Position	Depth (ft)	Accum. Lengths
Shut-in tool	5.00			4141.25	
Hydraulic tool	5.00			4146.25	
Change over sub	0.75			4147.00	
Jars	6.00			4153.00	
Safety Joint	2.00			4155.00	
Packer	5.00			4160.00	28.75 Bottom Of Top Packer
Packer	5.00			4165.00	
Anchor	5.00			4170.00	
change over sub	0.75			4170.75	
drill pipe	63.50			4234.25	
change over sub	0.75			4235.00	
anchor	15.00			4250.00	
Recorder	1.00	6651	Inside	4251.00	
Recorder	1.00	6666	Outside	4252.00	
bull plug	3.00			4255.00	90.00 Bottom Packers & Anchor

Total Tool Length: 118.75



DRILL STEM TEST REPORT

FLUID SUMMARY

MULL DRILLING COMPANY INC
1700 N WATERFRONT PKWY BLDG 1200
WICHITA KS 67206
ATTN: KEVIN KESSLER

JLT 1-10
10-15S-27W
Job Ticket: 1003 **DST#: 6**
Test Start: 2011.03.09 @ 17:00:00

Mud and Cushion Information

Mud Type: Gel Chem	Cushion Type:	Oil API:	deg API
Mud Weight: 9.00 lb/gal	Cushion Length: ft	Water Salinity:	ppm
Viscosity: 56.00 sec/qt	Cushion Volume: bbl		
Water Loss: 7.20 in ³	Gas Cushion Type:		
Resistivity: ohm.m	Gas Cushion Pressure: psig		
Salinity: 4600.00 ppm			
Filter Cake: inches			

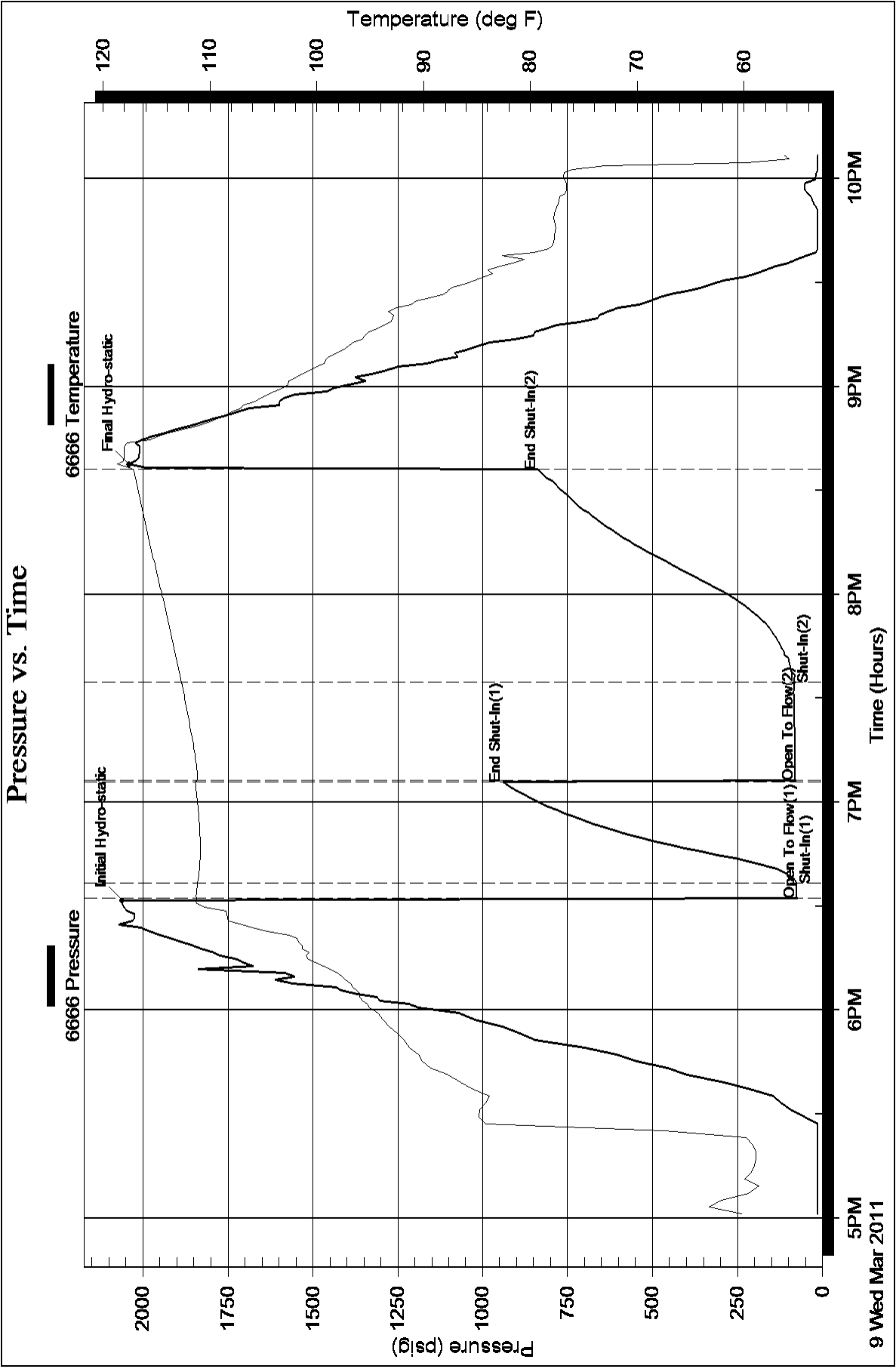
Recovery Information

Recovery Table

Length ft	Description	Volume bbl
10.00	MUD 100%MUD	0.049

Total Length: 10.00 ft Total Volume: 0.049 bbl
Num Fluid Samples: 0 Num Gas Bombs: 0 Serial #:
Laboratory Name: Laboratory Location:
Recovery Comments:

Pressure vs. Time



Pressure vs. Time

