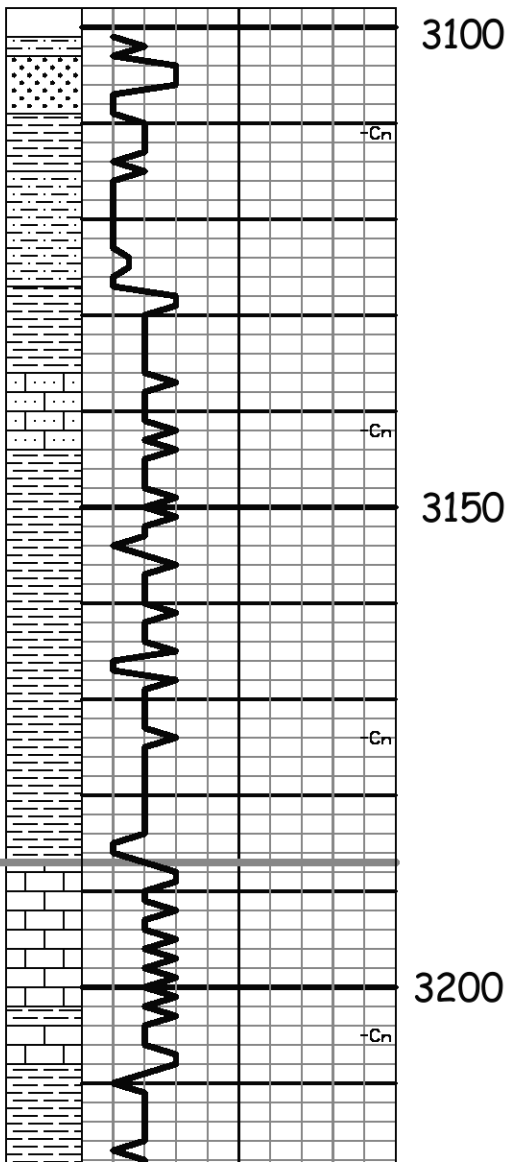


Stone Corral 2524' (+274) EL

B/Stone Corral 2556' (+242) EL



3100

3150

3200

Sdy Sh: red-brn,
 Sd: crm-lt gry, fn-vry fn grain, semi fri-brittle,
 pr vis por, NS
 Sh: red-brn, mstly sdy, some soft & gummy

Sh: A.A.

Sdy LS: crm-lt gry, fxln, fn-vry fn grain sd, some
 dolomitic, some prtly dns, some gritty, pr vis por,
 NS

Sh: red-brn, mstly sdy, some soft & gummy
 intermixed w/ Sd: lt gry-lt grn, fn-vry fn grain,
 some calc, some sli shly, mstly brittle-hrd, pr por,
 NS

Sh: red-brn, sdy in prt, soft & gummy in prt

Sh: mstly red-brn, incrs soft & gummy, some sdy,
 some grn, some sdy

LS: wh-crm, fxln, some sdy (vry fn grain), some
 fos, vry chky-prtly dns, pr por, NS

LS: wh-crm-tan, fxln, some sdy (vry fn grain),
 some fos, sub chk-prt dns w/ some chk, pr fos
 por, NS

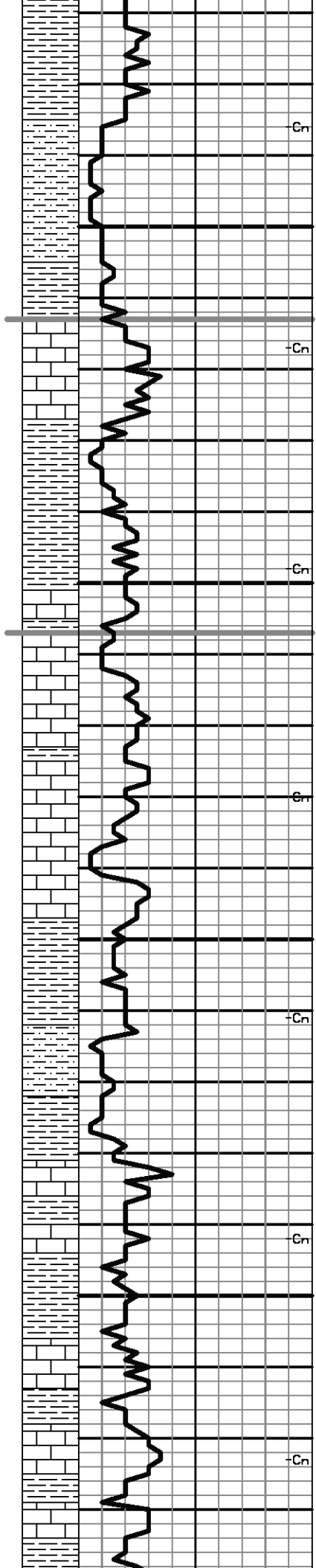
LS: tan-gry, fxln, some shly, some sdy, prt dns-
 gritty, pr por, NS

Sh: mstly red-brn, some soft & gummy, some sdy

Mud displaced from 3000' to 3008'

Morgan Mud check @ 3157': 55 Vis,
 8.7 Wt, 5.6 WL, 1,200 ppm Chl, 3# LCM

Neva 3187' (-389) EL



3250

3300

3350

3400

Sh: A.A. w/ some gry & grn

Sh: mstly soft & gummy, some sdy

Sd: gry-red-brn, fn-vry fn grain, some shly, some sli calc, fri-brittle, pr-fr por

Sh: red-brn, some soft & gummy, some sdy

LS: wh-crm-lt gry, fxln, some sdy (vry fn grain), some fos, sub chk-prt dns w/ some chk, pr por, NS

LS: gry-tan, fxln, fos, shly in prt, prt dns-gritty, pr por, NS

Sh: mstly gry, soft & gummy, some red-brn, sdy & soft & gummy

Sh: mstly red-brn w/ gry & grn intermixed w/ some Sd: gry-tan, fn-vry fn grain, shly in prt, fri, pr vis por, NS

LS: wh-crm, fxln, ool (vry small)-fos in prt, vry chky-prt dns, some fr -gd vry small ooc por, NS

LS: A.A.

LS: gry, fxln, fos, shly in prt, dns-gritty, pr por, NS

LS: crm-tan, fxln, fos in prt, some blk mineral inclusions, sub chk-prt dns w/ some chk, pr por, NS

LS: crm-tan-gry, fxln, fos-ool (vry small) in prt, some shly, chk-sub chk, mstly pr w/ tr vry small ooc por, NS

LS: med-drk gry, fxln, sli fos, some shly, prt dns-gritty, pr por, NS

Sh: red-brn, some soft & gummy, w/ gry & grn

Sh: mstly red-brn, some sdy, some soft & gummy, w/ gry & grn

LS: crm, fxln, dolomitic in prt, sub chk-prt dns, pr por, NS

Sh: red-brn, mstly soft & gummy, some gry & grn

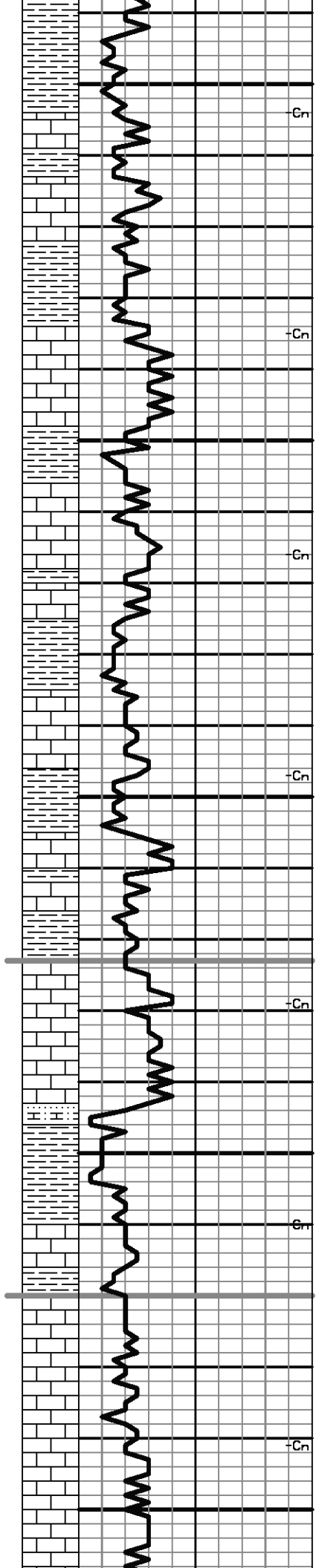
LS: A.A., pr por, NS

LS: crm-gry, fxln, fos in prt, sub chk-prt dns, pr por, NS

LS: wh-crm, fxln, fos in prt, vry chky-prt dns, pr por, NS

Red Eagle 3262' (-464) EL

Foraker 3306' (-508) EL



3450

-Cn

Sh: red-brn, mstly soft & gummy, w/ some gry

LS: crm-gry, fxln, sli fos, some sli shly, sub chk-prt dns, pr por, NS

LS: crm-gry-tan, fxln, some shly, sub chk-prt dns-gritty, pr por, NS

Sh: mstly red-brn

-Cn

LS: crm-gry, fxln, fos in prt, sub chk-prt dns, pr por, NS

LS: A.A., some sli shly, pr por, NS

3500

-Cn

LS: crm, fxln, fos in prt, chky-prtly dns w/ some vry chky, pr por, NS

LS: crm, fxln, fos in prt, sub chk-prt dns w/ some chk, pr por, NS

Sh: red-brn, some soft & gummy, some sdy

LS: crm, fxln, fos in prt, chky-prtly dns w/ some vry chky, pr por, NS

-Cn

3550

Sh: mstly red-brn w/ some gry & grn

LS: crm-lt gry-tan, fxln, sdy (fn-vry fn grain) in prt, shly in prt (red-brn, mottled), sub chk-prt dns-gritty, pr por, NS

Sh: red-brn, some sdy

-Cn

LS: crm-lt gry, fxln, fos in prt, shly in prt (red-brn, mottled), chky-prtly dns w/ some vry chky, pr por, NS

LS: A.A., incrs prtly dns, pr por, NS

Calc Sd: crm, fn grain, fri, pr-fr por, NS

3600

-Cn

Sh: red-brn, soft & gummy in prt, sdy in prt

LS: wh-crm, fxln, ool in prt, vry chky-prtly dns, pr introol por, NS

LS: wh-crm, fxln, fos-ool in prt, vry chky-prtly dns, pr-fr intrprt por, NS

LS: A.A. w/ some dns, pr por, NS

-Cn

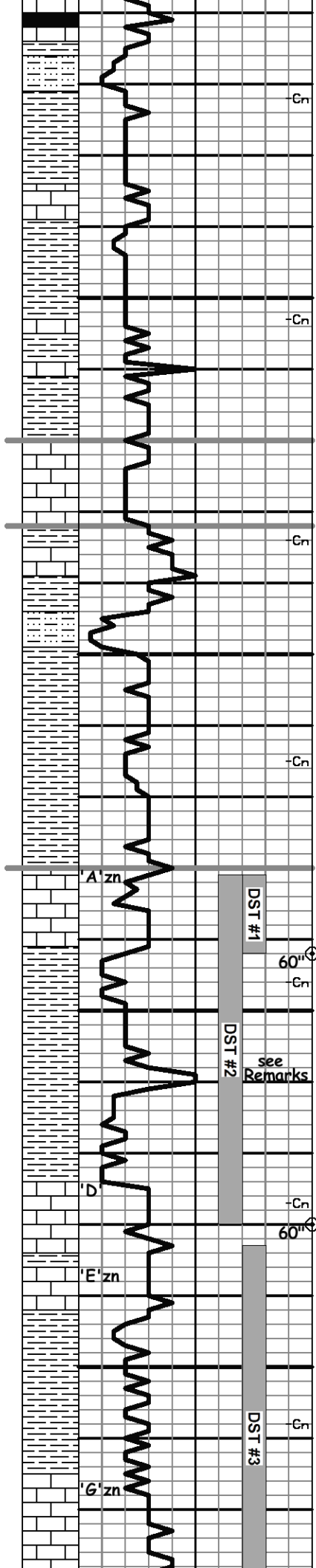
3650

LS: crm-lt gry, fxln, sli fos, sub chk-dns, pr por, NS

Morgan Mud check @ 3474': 55 Vis, 8.8 Wt, 6.0 WL, 1,200 ppm Chl, 2# LCM

Topeka 3573' (-775) EL

Deer Creek 3620' (-822) EL



Sh: Blk Carb
 LS: gry-brn, sli fos, mstly dns, pr por, NS

Sdy Sh: lt grn, fn grain sd, pr por, NS, intermixed w/ Sh: grn

Sh: mstly red-brn w/ gry, grn, brn, some sdy, intermixed w/ small amnt Shly Sd: lt gry-brn, fn grain, sli calc, pr por, NS

LS: wh-crm, fxln, fos in prt, chky-prtly dns w/ some vry chky, pr-fr fos por, NS

Sh: red-brn, soft & gummy in prt, some sdy (fn-vry fn grain), some gry & grn

3700

LS: crm-lt gry, fxln, fos in prt, sub chk-prt dns, pr por, NS

Sh: red-brn, gry, grn, some drk gry

• LS: wh-crm, fxln, fos-ool, vry chky-prtly dns, pr-fr intrprt por, vry scat blk tarry-asph sptd stn, NSFO, no odor

(no Black Carb Shale)
 LS: crm, fxln, dns, pr por, NS

Sh: mstly red-brn, soft & gummy, intermixed w/ some Sdy Sh: grn, fn-vry fn grain sd, pr por, NS, some Siltstone: brn, & some Shly Sd: red-brn, fn grain, pr vis por, NS

Sh: red-brn, mstly soft & gummy, some gry & grn

Sh: A.A.

• LS: crm, fxln, mstly ool w/ some fos in prt, sub chk-prt dns, pr-fr w/ some gd intrprt por, scat med-drk brn sptd-sat stn, S-FSFO, vry fnt odor

LS: crm, fxln, sub chk-prt dns, pr por, NS

Sh: red-brn, gry, grn, some sdy

3800

Sh: A.A. w/ some brn, silty w/ few pcs Sd; clr-crm, fn-med grain, sli calc, fri-brittle, fr-gd por, NS

Sh: red-brn, gry, grn, drk gry, brn

• LS: wh-crm, fxln, sli fos-ool, sub chk-dns w/ some chk, pr intrprt por, vry scat med-drk brn sptd-sub sat stn, cpl pcs w/ VSSFO (p-p bds), no odor

LS: wh-crm, fxln, tr pyr, sub chk-dns w/ some chk, pr por, NS

Sh: mstly red-brn

3850

Sh: mstly red-brn, some grn

• LS: wh-crm, some w/ gry-grn tint, fxln, fos in prt, sub chk-prt dns w/ some chk, pr w/ tr fr fos por, vry scat lt-med brn sptd-sat stn, S-FSFO, vry fnt odor

Oread 3720' (-922) EL

Heebner 3732' (-934) EL

Made 28 stand short trip @ 3792' for DST #1, pulled real tight from 3225-3150. Finished short trip & lost circ after reaming 60' to bottom. Had 2# LCM in system, pulled 20 stands & mixed mud & LCM to 10-12# & regained circ, lost 235-300 bbls. Trip back to TD & circ. 1½ hr. with full returns of 7# LCM coming around.

Morgan Mud check @ 3792' (after regaining circulation and prior to DST #1): 57 Vis, 8.9 Wt, 6.0 WL, 1,200 ppm Chl, 10# LCM

Lansing 3780' (-982) EL

DST #1 3781'-3792' Lansing 'A' zn MISRUN - tool plugged throughout test. Note: tool slid 5'-6' to bottom (1'-2' after tool opened). Lost less than 1' of fluid in annulus.

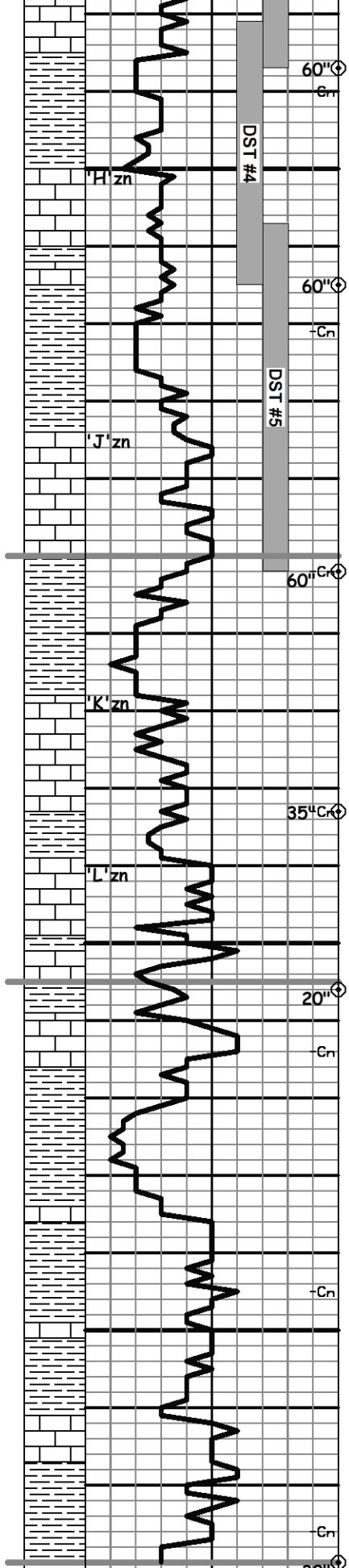
Pipe Strap @ 3792': Strap long 0.07'
 Straight Hole Survey @ 3792': 0.28° Dev.

Auto driller not working 3809' & 3810'

DST #2 3781'-3830' Lans 'A' -'D' zn
 IF: blow built to 8.75"; ISI: no blow back
 FF: BOB in 32"; FSI: 1" blow back
 Rec: 345' GIP & 195' TOTAL FLUID
 45' CO (5% G, 89% O, 6% M)
 150' GMCO (17% G, 58% O, 25% M)
 Oil Gravity 32.6° API
 IFP: 25-46#/30" ISIP: 1108#/60"
 FFP: 54-96#/60" FSIP: 1072#/90"

Morgan Mud check @ 3830': 57 Vis, 8.8 Wt, 6.0 WL, 1,200 ppm Chl, 6# LCM

DST #3 3833'-3887' Lansing 'G' zn
 IF: blow built to 1"; FF: no blow
 Rec. 5' Mud w/ trace oil
 IFP: 14-17#/30" ISIP: 185#/60"
 FFP: 20-21#/30" FSIP: 53#/60"



LS: crm-lt gry, fxln, sub chk-prt dns, pr por, NS

Sh: red-brn, gry, grn

3900 • LS: wh-crm, fxln, fos-ool in prt, sub chk-prt dns, pr w/ some fr intrprt por, scat lt-med brn sptd-sub sat w/ few pcs sat stn, some fr live stn, 1 pc w/ SFO (few small beads), no odor

Sh: mstly red-brn, some soft & gummy, scat gry & grn

3950 • LS: crm, fxln, sli fos, tr calcite, sub chk-dns, pr-fr fos-small vug por, fr amnt med brn w/ some blk sptd-sub sat & rare sat stn, FSFO, fr odor

• LS: A.A. w/ dcrcs amt of stn & SFO, sli odor

Sh: red-brn, mstly soft & gummy

Sh: A.A.

LS: crm-gry, fxln, fos-ool in prt, sub chk-prt dns, pr por, NS

• LS: wh-crm, fxln, sli fos, chky-dns, pr fos w/ rare vug por, vry scat brn-blk sptd stn, mstly dead w/ some live stn in wet smpl, NSFO, no odor

Sh: red-brn, gry, grn

LS: crm-gry-lt purple, fxln, sub chk-prt dns, pr por, NS

4000 LS: crm-lt gry, fxln, sli fos, some shly (red-brn, mottled), sub chk-prt dns, pr por, NS

Calc Sd: lt brn, fn grain, brittle, pr por, NS

LS: crm-lt gry, fxln, sli fos, sub chk-prt dns, pr por, NS

Sh: mstly red-brn & lt gry, some soft & gummy

Sh: red-brn, mstly soft & gummy

LS: crm-gry-tan, fxln, sli fos, chk-prt dns, pr por, NS, w/ some Calc Sh: gry

Sh: mstly red-brn & lt gry, mstly soft & gummy

4050 Sh: mstly red-brn, mstly soft & gummy

Sh: mstly red-brn, mstly soft & gummy

LS: crm-gry, fxln, fos in prt, sub chk-prt dns, pr por, NS

Sh: mstly red-brn, mstly soft & gummy

No circ smpl (smpl box left open by accident)

DST #4 3881'-3915' Lansing 'H' zn
 IF: broken valve for first 11.5 min, and then no blow after fixed: FF: no blow
 Rec. 5' Mud w/ trace oil
 IFP: 13-14#/30" ISIP: 109#/60"
 FFP: 15-16#/30" FSIP: 57#/60"

Morgan Mud check @ 3915': 47 Vis, 8.9 Wt, 6.0 WL, 1,000 ppm Chl, 4# LCM

DST #5 3907'-3952' Lansing 'J' zn
 IF: blow built to 0.5"; FF: no blow
 Rec. 10' SOCM (2% G, 6% O, 92% M)
 IFP: 13-16#/30" ISIP: 121#/60"
 FFP: 18-19#/30" FSIP: 49#/60"

Stark 3950 (-1152) EL

Morgan Mud check @ 3952': 56 Vis, 9.1 Wt, 6.0 WL, 1,400 ppm Chl, 4# LCM

B/KC 4004' (-1206) EL

Ran 6 stand short trip prior to running electric logs

R.T.D. 4080' (-1282)
L.T.D. 4081' (-1283)

Straight Hole Survey @ 4080': 0.34° Dev.

