

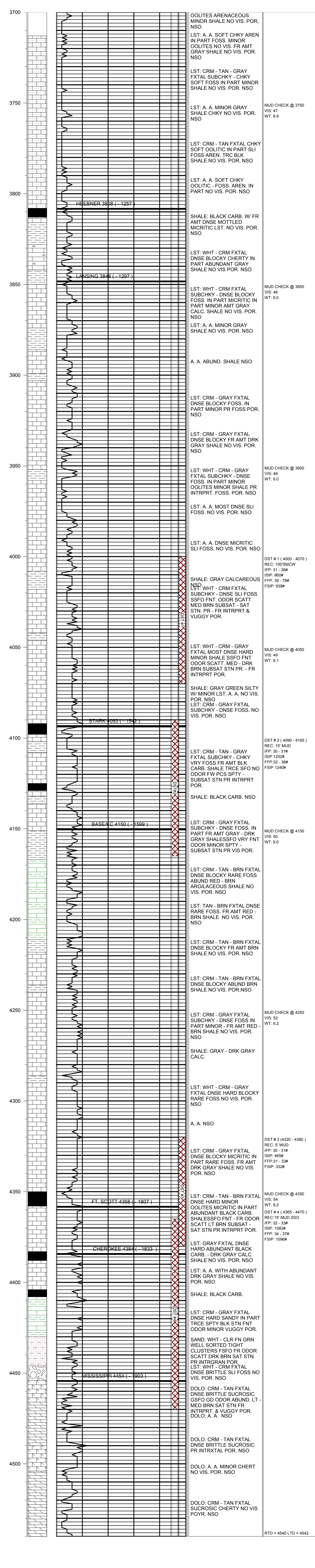
**KEVIN L. KESSLER**  
**CONSULTING PETROLEUM GEOLOGIST**  
 ( 316 ) 522-7338

<b>OPERATOR : MULL DRILLING COMPANY INC.</b>		<b>ELEVATION</b>
<b>LEASE : BABCOCK 'B'</b>	<b>WELL # : 1 - 32</b>	<b>KB : 2551</b>
<b>LOCATION : 2502' FNL &amp; 1209' FEL</b>		<b>GL : 2542</b>
<b>SEC: 32</b>	<b>TWP : 15 S</b>	<b>RGE : 26 W</b>
<b>COUNTY : GOVE</b>		<b>STATE : KANSAS</b>
<b>CONTRACTOR : DUKE DRILLING RIG # 2</b>		<b>SURFACE :</b>
<b>COMM: 03 / 02 / 2011</b>	<b>COMP : 03 / 12 / 2011</b>	<b>8 5/8" @ 238</b>
<b>RTD : 4540</b>	<b>LOG TD : 4542</b>	<b>PRODUCTION :</b>
<b>SAMPLES SAVED FROM : 3700</b>	<b>TO: RTD</b>	<b>NONE</b>
<b>GEOLOGICAL SUPERVISION FROM : 3700</b>	<b>TO: RTD</b>	<b>ELECTRICAL SURVEYS:</b>
<b>MUD UP : 3600</b>	<b>TYPE MUD : CHEMICAL</b>	<b>DIL</b>

FORMATION	TOP	LOG	DATUM	TOP	SAMPLE	DATUM	STRUCT. COMP.
HEEBNER	3808		- 1257	3808		- 1257	- 23
LANSING	3848		- 1297	3848		- 1297	- 21
STARK	4093		- 1542	4093		- 1542	- 19
B / KC	4150		- 1599	4150		- 1599	- 21
FT SCOTT	4358		- 1807	4358		- 1807	- 29
CHEROKEE	4384		- 1833	4384		- 1833	- 26
MISSISSIPPI	4454		- 1903	4454		- 1903	- 33

REFERENCE WELL FOR STRUCTURAL COMPARISON :

MULL DRILLING # 1 - 32 CHENEY      SEC. 32 - T 15S - R 26W      GOVE COUNTY KANSAS



**COMMENTS:**

**DUE TO LOW STRUCTURAL POSITION AND NEGATIVE DST RESULTS**  
**THIS WELL WAS PLUGGED AND ABANDONED**

**KEVIN L. KESSLER**