

OPERATOR

Company: Falcon Exploration, Inc.
 Address: 125 N. Market
 Suite 1252
 Wichita, KS 67202
 Contact Geologist: Brian Fisher
 Contact Phone Nbr: 316-262-1378
 Well Name: Kenneth Dirks #1-8
 Location: Sec 8, T28s, R30W
 Pool:
 State: Kansas
 API: 15-069-20337-0000
 Field: Wildcat
 Country: USA

Scale 1:240 Imperial

Well Name: Kenneth Dirks #1-8
 Surface Location: Sec 8, T28s, R30W
 Bottom Location:
 API: 15-069-20337-0000
 License Number: 5822
 Spud Date: 1/20/2011 Time: 15:34
 Region: Gray County
 Drilling Completed: 2/2/2011 Time: 17:50
 Surface Coordinates: 2090' FSL & 440' FEL
 Bottom Hole Coordinates:
 Ground Elevation: 2809.00ft
 K.B. Elevation: 2819.00ft
 Logged Interval: 3300.00ft To: 5500.00ft
 Total Depth: 5525.00ft
 Formation: Mississippian
 Drilling Fluid Type: Chemical/Fresh Water Gel

SURFACE CO-ORDINATES

Well Type: Vertical
 Longitude: Latitude:
 N/S Co-ord: 2090' FSL
 E/W Co-ord: 440' FEL

LOGGED BY

Keith Reavis
Consulting Geologist

Company: KLG #136
 Address: 3420 22nd Street
 Great Bend, KS 67530
 Phone Nbr: 620-617-4091
 Logged By: Geologist Name: Keith Reavis

CONTRACTOR

Contractor: Val Energy, Inc.
 Rig #: 1
 Rig Type: mud rotary
 Spud Date: 1/20/2011 Time: 15:34
 TD Date: 2/2/2011 Time: 17:50
 Rig Release: Time:

ELEVATIONS

K.B. Elevation: 2819.00ft Ground Elevation: 2809.00ft
 K.B. to Ground: 10.00ft

NOTES

Based on engineering analyses of DST #1 and DST #2 it was determined and agreed upon by all parties that 5 1/2" production casing be set and cemented and that the K. Dirks #1-8 be further tested through perforations in the Morrow Sand.

The samples were saved from this well and will be available for further review at the Kansas Geological Survey Well

Respectfully submitted,
Keith Reavis

Falcon Exploration, Inc.

Daily Drilling Report

DATE	7:00 AM DEPTH	REMARKS
1/24/2011		Geologist Keith Reavis on location @ 2000 hrs, 3400 ft., drilling ahead set up and check Bloodhound and communications
1/25/2011	3707	drilling ahead, Stotler, Tarkio, Topeka, Lecompton, Heebner
1/26/2011	4312	drilling ahead, Douglas, Lansing, lower LKC
1/27/2011	4748	drilling ahead, lower LKC, Marmaton, Pawnee, Cherokee
1/28/2011	5050	drilling Cherokee, stop and short trip in lower Cherokee at 5050' resume drilling, cut Morrow sand, show and gas kick warrants DST, TOH for DST #1, conducting DST #1
1/29/2011	5135	complete DST #1, successful test, resume drilling Morrow, drill out of Morrow into Miss, cfs 5171, TOH for DST #2, conducting DST #2
1/30/2011	5171	complete DST #2, successful test, TIH w/bit, resume drilling
1/31/2011	5376	drilling ahead, Mississippian, St. Louis, show and gas activity warrant test, TOH for DST #3, conducting DST #3, complete DST, successful test, TIH w/bit, rig freezing up
2/1/2011	5414	drilling ahead, RTD @ 5525 ft, 1750 hrs, set to circ rig on bottom until weather warms for logs
2/2/2011	5525	circulating on bottom, waiting on weather for logs, TOH for logs conduct and complete logging operations, geo off loc @ 1830 hrs

Well Comparison Sheet

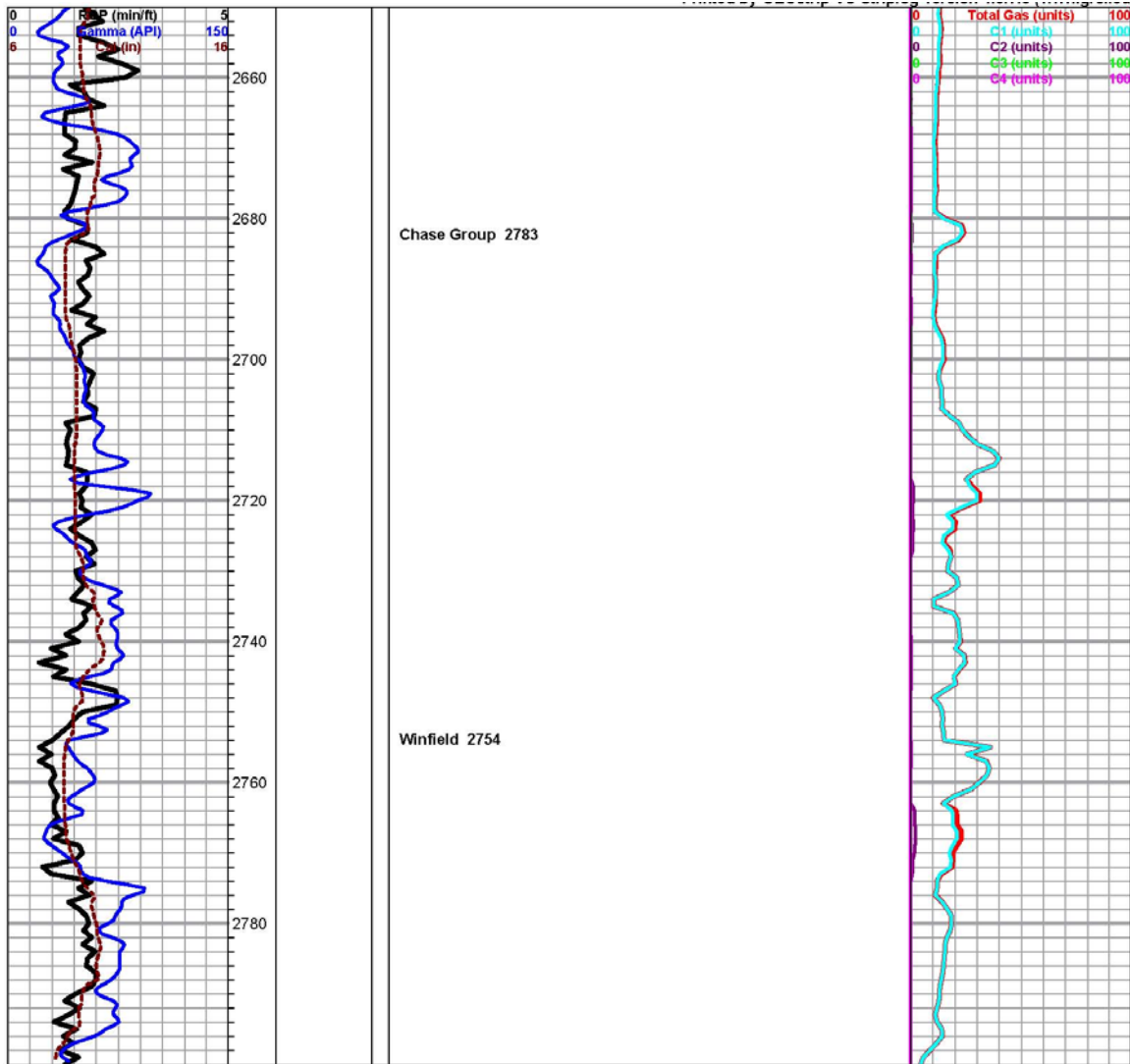
DRILLING WELL
K. Dirks #1-8
2090' FSL & 440' FEL
Sec. 8 T28S R30W
2819 KB

COMPARISON WELL
Lanterman #1-8
2030' FNL & 370' FEL
Sec. 8 T28S R30W
2821 KB

Formation	sample	sub-sea	log	sub-sea	log	sub-sea	sample	log
Stotler	3531	-712	3530	-711	3532	-711	-1	0
Tarkio	3604	-785	3602	-783	3603	-782	-3	-1
Topeka	3804	-985	3800	-981	3804	-983	-2	2
Lecompton	3965	-1146	3965	-1146	3967	-1146	0	0
Heebner	4146	-1327	4146	-1327	4146	-1325	-2	-2
Lansing	4251	-1432	4251	-1432	4249	-1428	-4	-4
Stark	4612	-1793	4610	-1791	4606	-1785	-8	-6
Marmaton	4750	-1931	4741	-1922	4743	-1922	-9	0
Pawnee	4841	-2022	4841	-2022	4837	-2016	-6	-6
Cherokee	4886	-2067	4885	-2066	4881	-2060	-7	-6
Morrow	5093	-2274	5093	-2274	5089	-2268	-6	-6
Miss Chester	5144	-2325	5144	-2325	5151	-2330	5	5
Miss St. Gen	5224	-2402	5216	-2397	5214	-2422	24	26

Miss St. Gen.	53221	-2402	5216	-2397	5244	-2423	21	26
St. Louis B por	5342	-2523	5342	-2523	5345	-2524	1	1
Salem	5498	-2679	5497	-2678				
Total Depth	5525	-2706	5528	-2709	5406	-2585	-121	-124

Chase Group Gas Chart



Drill Stem Test #1

RICKETTS TESTING

(620) 326-5830

Page 1

Company **Falcon Exploration, Inc.**
 Address **125 North Market, Suite 1252**
 CSZ **Wichita, KS 67202**
 Attn. **Keith Reavis**

Lease Name **Kenneth Dirks**
 Lease # **1-8**
 Legal Desc **SW NE NE SE**
 Section **8**
 Township **28S**
 County **Gray**
 Drilling Cont **Val Drilling #1**

Job Ticket **3413**
 Range **30W**
 State **KS**

Comments **Field: Wildcat**

GENERAL INFORMATION

Test # **1** Test Date **1/28/2011**
 Tester **Jimmy Ricketts**
 Test Type **Conventional Bottom Hole Successful Test**
 # of Packers **2.0** Packer Size **6 3/4**
 Mud Type **Gel Chem**
 Mud Weight **9.4** Viscosity **56.0**
 Filtrate **11.2** Chlorides **1700**

Chokes **3/4** Hole Size **7 7/8**
 Top Recorder # **13767**
 Mid Recorder #
 Bott Recorder # **w1023**
 Mileage **236** Approved By
 Standby Time **0**
 Extra Equipmnt **Jars & Safety Joint**
 Time on Site **4:30 PM**
 Tool Picked Up **8:00 PM**
 Tool Layed Dwn **6:30 AM**

Drill Collar Len **0**
 Wght Pipe Len **0**

Elevation **2809.00** Kelley Bushings **2819.00**

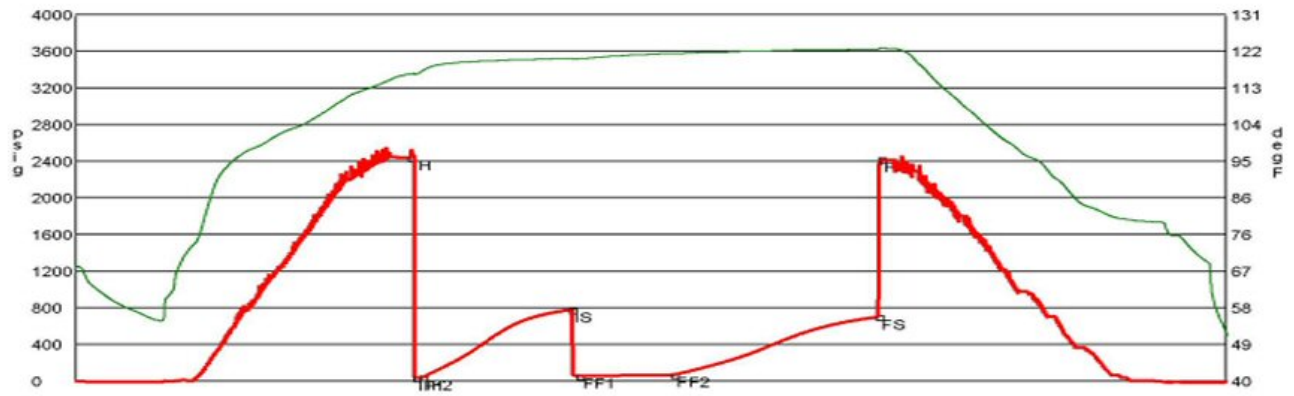
Formation **Morrow**
 Interval Top **5085.0** Bottom **5135.0**
 Anchor Len Below **50.0** Between **0**
 Total Depth **5135.0**
 Blow Type **Weak blow building to 7 inches initial flow period. Strong blow throughout final flow period. 2 inch blow back during final shut-in period.**

Start Date/Time **1/28/2011 7:27 PM**
 End Date/Time **1/29/2011 6:54 AM**

RECOVERY

Feet	Description	Gas	Oil	Water	Mud
430	Slight gas smell in pipe	100% 430ft	0% 0ft	0% 0ft	0% 0ft
135	Gassy heavy oil cut mud	14% 18.9ft	35% 47.2ft	0% 0ft	51% 68.9ft

DST Fluids **0**



	Date	Time	Pressure	Temp	
IH	1/28/2011 10:45:50 PM	3.313889	2438.185	116.306	Initial Hydro-static
IF1	1/28/2011 10:49:00 PM	3.366667	36.942	116.155	Initial Flow (1)
IF2	1/28/2011 10:53:10 PM	3.436111	40.399	117.114	Initial Flow (2)
IS	1/29/2011 12:22:10 AM	4.919444	780.739	120.181	Initial Shut-in
FF1	1/29/2011 12:26:50 AM	4.997222	57.611	120.122	Final Flow (1)
FF2	1/29/2011 1:23:10 AM	5.936111	68.898	121.401	Final Flow (2)
FS	1/29/2011 3:25:40 AM	7.977778	703.039	122.463	Final Shut-in
FH	1/29/2011 3:26:50 AM	7.997222	2422.499	122.757	Final Hydro-static

Drill Stem Test #2

RICKETTS TESTING

(620) 326-5830

Page 1

Company **Falcon Exploration, Inc.**
 Address **125 North Market, Suite 1252**
 CSZ **Wichita, KS 67202**
 Attn. **Keith Reavis**

Lease Name **Kenneth Dirks**
 Lease # **1-8**
 Legal Desc **SW NE NE SE**
 Section **8**
 Township **28S**
 County **Gray**
 Drilling Cont **Val Drilling #1**

Job Ticket **3413**
 Range **30W**
 State **KS**

Comments **Field: Wildcat**

GENERAL INFORMATION

Test # **2** Test Date **1/29/2011**
 Tester **Jimmy Ricketts**
 Test Type **Conventional Bottom Hole Successful Test**
 # of Packers **2.0** Packer Size **6 3/4**

Chokes **3/4** Hole Size **7 7/8**
 Top Recorder # **13767**
 Mid Recorder #
 Bott Recorder # **w1023**

Mud Type **Gel Chem**
 Mud Weight **9.1** Viscosity **59.0**
 Filtrate **8.0** Chlorides **1300**

Mileage **0** Approved By
 Standby Time **0**
 Extra Equipmnt **Jars & Safety Joint**
 Time on Site **4:30 PM**
 Tool Picked Up **6:40 PM**
 Tool Layed Dwn **6:00 AM**

Drill Collar Len **0**
 Wght Pipe Len **0**

Elevation **2809.00** Kelley Bushings **2819.00**

Formation **Morrow**
 Interval Top **5083.0** Bottom **5171.0**
 Anchor Len Below **88.0** Between **0**

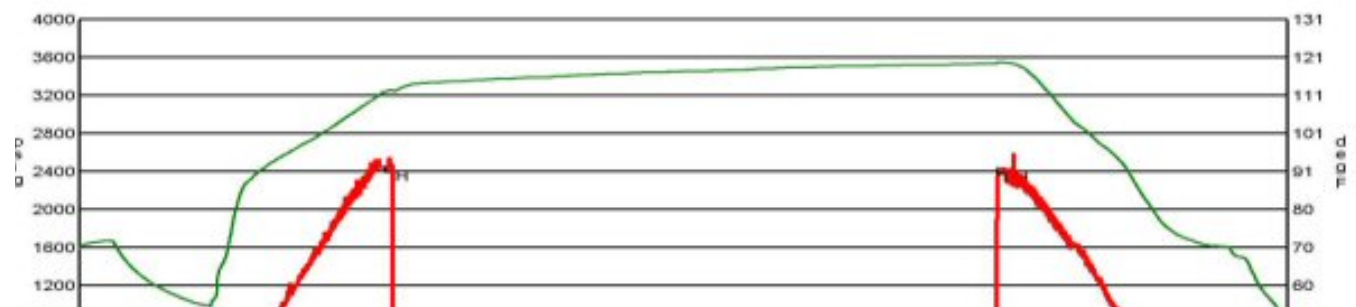
Start Date/Time **1/29/2011 5:35 PM**
 End Date/Time **1/30/2011 6:44 AM**

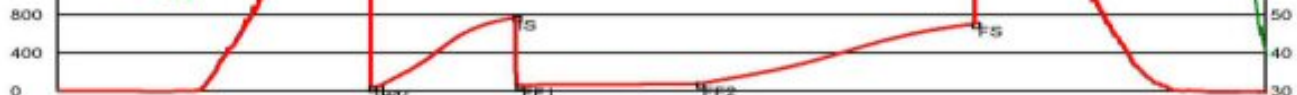
Blow Type **Weak blow building to 5 inches initial flow period. Strong blow throughout final flow period. Times: 5, 90, 120, 180.**

RECOVERY

Feet	Description	Gas	Oil	Water	Mud
590	Very slight gas smell in pipe	100% 590ft	0% 0ft	0% 0ft	0% 0ft
150	Gassy heavy oil cut mud	13% 19.5ft	26% 39ft	0% 0ft	61% 91.5ft

DST Fluids **0**





	Date	Time	Pressure	Temp	
IH	1/29/2011 8:54:15 PM	3.320833	2433.226	111.896	Initial Hydro-static
IF1	1/29/2011 8:58:45 PM	3.395833	34.821	111.884	Initial Flow (1)
IF2	1/29/2011 9:02:45 PM	3.4625	39.709	112.525	Initial Flow (2)
IS	1/29/2011 10:32:45 PM	4.9625	767.646	115.551	Initial Shut-in
FF1	1/29/2011 10:34:45 PM	4.995833	56.9	115.46	Final Flow (1)
FF2	1/30/2011 12:32:45 AM	6.9625	75.211	117.376	Final Flow (2)
FS	1/30/2011 3:33:15 AM	9.970833	702.082	119.194	Final Shut-in
FH	1/30/2011 3:35:00 AM	10	2416.217	119.517	Final Hydro-static

Drill Stem Test #3

RICKETTS TESTING

(620) 326-5830

Page 1

Company	Falcon Exploration, Inc.	Lease Name	Kenneth Dirks
Address	125 North Market, Suite 1252	Lease #	1-8
CSZ	Wichita, KS 67202	Legal Desc	SW NE NE SE
Attn.	Keith Reavis	Section	8
		Township	28S
		County	Gray
		Drilling Cont	Val Drilling #1
		Job Ticket	3413
		Range	30W
		State	KS

Comments **Field: Wildcat**

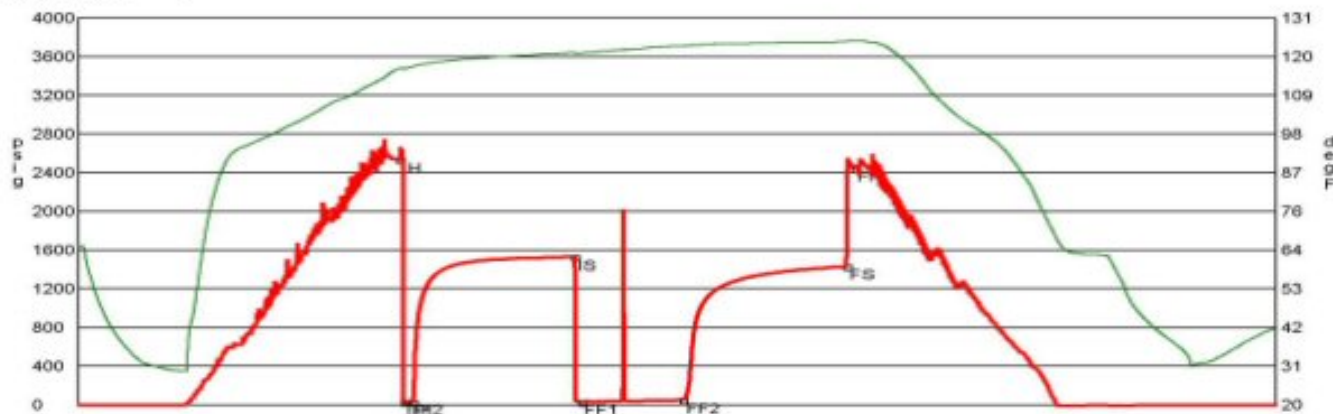
GENERAL INFORMATION

Test # 3	Test Date	1/31/2011	Chokes	3/4	Hole Size	7 7/8
Tester	Jimmy Ricketts		Top Recorder #	13767		
Test Type	Conventional Bottom Hole		Mid Recorder #			
	Successful Test		Bott Recorder #	w1023		
# of Packers	2.0	Packer Size	6 3/4	Mileage	0	Approved By
				Standby Time	0	
Mud Type	Gel Chem			Extra Equipmnt	Jars & Safety Joint	
Mud Weight	9.1	Viscosity	47.0	Time on Site	5:00 AM	
Filtrate	7.2	Chlorides	900	Tool Picked Up	8:20 AM	
				Tool Layed Dwn	6:00 PM	
Drill Collar Len	0			Elevation	2809.00	Kelley Bushings
Wght Pipe Len	0					2819.00
Formation	Saint Louis			Start Date/Time	1/31/2011 7:51 AM	
Interval Top	5320.0	Bottom	5376.0	End Date/Time	1/31/2011 7:04 PM	
Anchor Len Below	56.0	Between	0			
Total Depth	5376.0					
Blow Type	Weak blow building to 1/2 inch initial flow period. Surface blow, flushed tool 30 minutes into final flow period causing a 1/2 inch blow. Times: 5, 91, 60, 92.					

RECOVERY

Feet	Description	Gas	Oil	Water	Mud
65	Trace oil cut mud	0% Off	trace	0% Off	100% 65ft

DST Fluids **0**



	Date	Time	Pressure	Temp	
IH	1/31/2011 10:49:30 AM	2.975	2528.936	116.379	Initial Hydro-static
IF1	1/31/2011 10:52:00 AM	3.016667	23.265	116.402	Initial Flow (1)
IF2	1/31/2011 10:57:00 AM	3.1	30.19	116.955	Initial Flow (2)
IS	1/31/2011 12:28:15 PM	4.620833	1526.301	120.971	Initial Shut-in
FF1	1/31/2011 12:31:45 PM	4.679167	29.583	120.822	Final Flow (1)
FF2	1/31/2011 1:29:15 PM	5.6375	45.263	122.929	Final Flow (2)
FS	1/31/2011 3:01:30 PM	7.175	1427.108	124.132	Final Shut-in
FH	1/31/2011 3:05:45 PM	7.245833	2443.481	124.302	Final Hydro-static

ROCK TYPES

	Cht vari		Lmst fw<7		shale, gry		Ss
	Chtcong		Lmst fw>7		Carbon Sh		No Sample
	Dolprim		shale, grn		shale, red		

ACCESSORIES

- MINERAL**
- ⊥ Calcareous
 - ▲ Chert, dark
 - ∠ Dolomitic
 - ∩ Glauconite
 - ✕ Mineral Crystals
 - P Pyrite
 - Sandy
 - Silty
 - △ Chert White
 - Argillaceous/Shale

- FOSSIL**
- ∩ Bioclastic or Fragmental
 - F Fossils < 20%
 - ⊙ Oolite
 - ⊗ Pellets
 - ♁ Plant Remains
 - ♁ Oomoldic

- STRINGER**
- ▨ Dolomite
 - ▨ Limestone
 - ▨ Sandstone
 - ▨ Shale
 - ▨ green shale
 - ▨ red shale

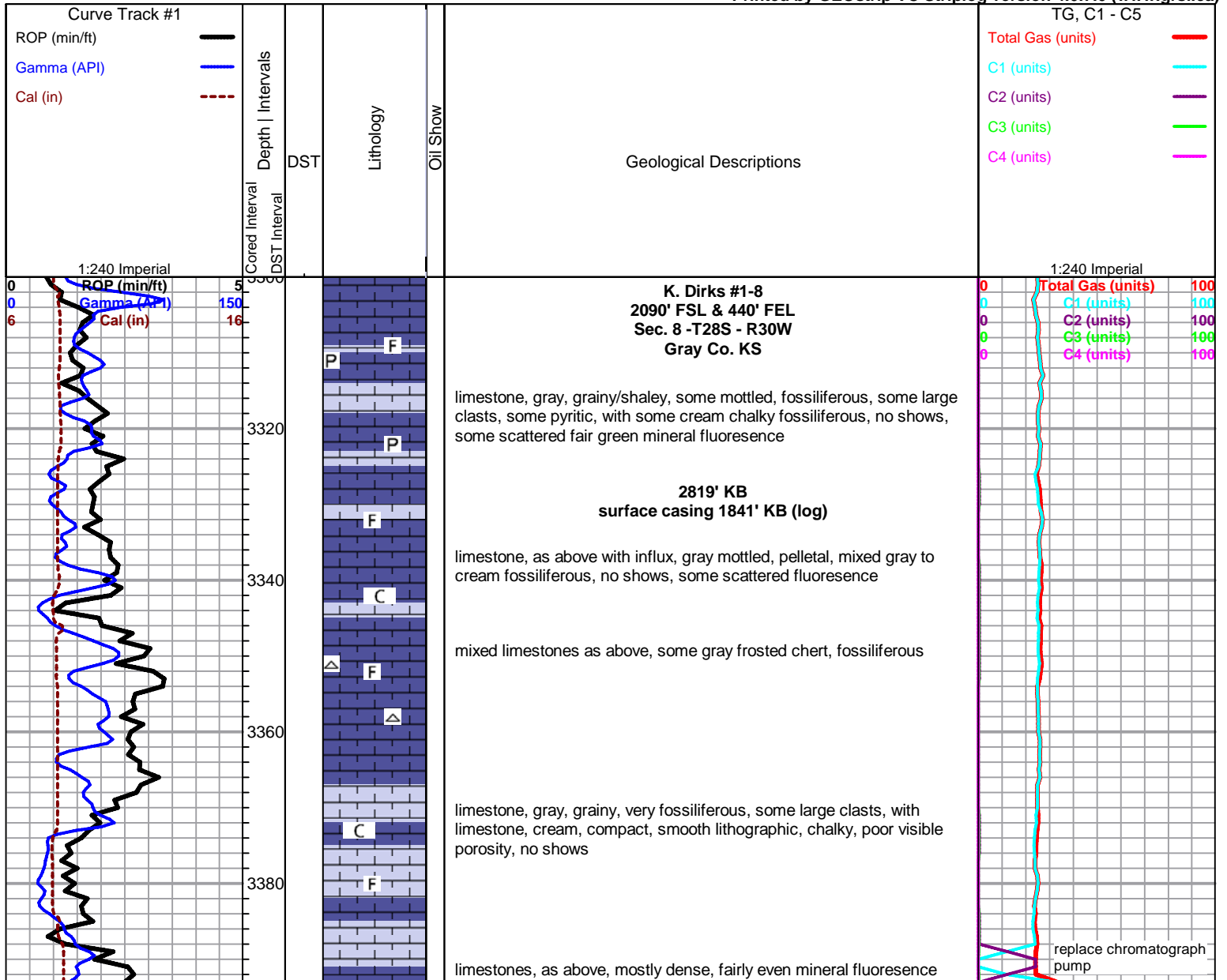
- TEXTURE**
- C Chalky
 - L Lithogr

OTHER SYMBOLS

- MISC**
- DR Daily Report
 - 📷 Digital Photo
 - 📄 Document
 - 📁 Folder
 - 🔗 Link
 - 📊 Vertical Log File
 - 📊 Horizontal Log File
 - 📊 Core Log File
 - 📊 Drill Cuttings Rpt

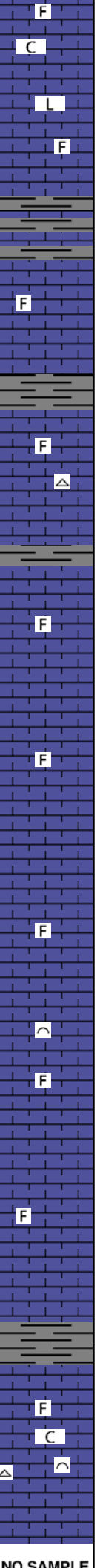
- DST**
- DST Int
 - DST alt

Printed by GEOstrip VC Striplog version 4.0.7.0 (www.grsi.ca)



fossiliferous to lithographic, chalky in part, poor visible porosity, some scattered fair fluorescence, no shows

3620
3640
3660
3680
3700
3720
3740
3760
3780
3800
3820



limestones, mixed gray to cream, microcrystalline, fossiliferous, dense, no shows

as above, some scattered cherts

Bern

limestone, mixed non-descript fossiliferous, some with large clasts, some scattered white bioclastic, grainy, poor visible porosity, some bright bluish white fluorescence, no shows

limestone, white to light gray, some green tint, microcrystalline, arenaceous to grainy bioclastic, some darker gray fossiliferous, no shows, some scattered fluorescence

limestones as above

Topeka 3804 -985

limestone, white to cream, microcrystalline, bioclastic to fossiliferous, chalky in part, poor visible porosity, some scattered white fresh chert, no shows, some scattered fair fluorescence

0
0
6

ROP (m/ft)
Gamma (API)
Cal (in)

5
150
16

0
0
0
0
0

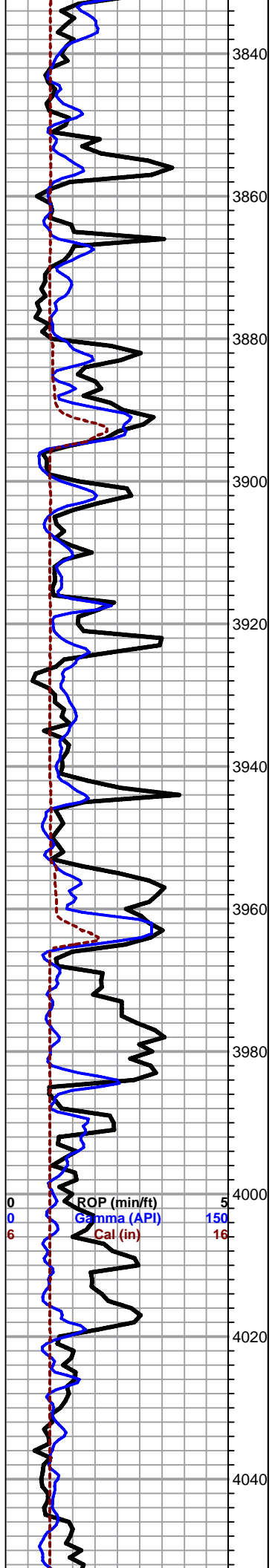
Total Gas (units)
C1 (units)
C2 (units)
C3 (units)
C4 (units)

100
100
100
100
100

NO SAMPLE

3860 - 3900 complex not caught

3860 - 3900 samples not caught



limestone, light gray to white, microcrystalline, fossiliferous, chalky, poor visible porosity, no shows

limestone, white to cream and light gray, fossiliferous to bioclastic, grainy, with oolitic to oomoldic, some fair oomold porosity, no shows, fairly even green mineral fluorescence

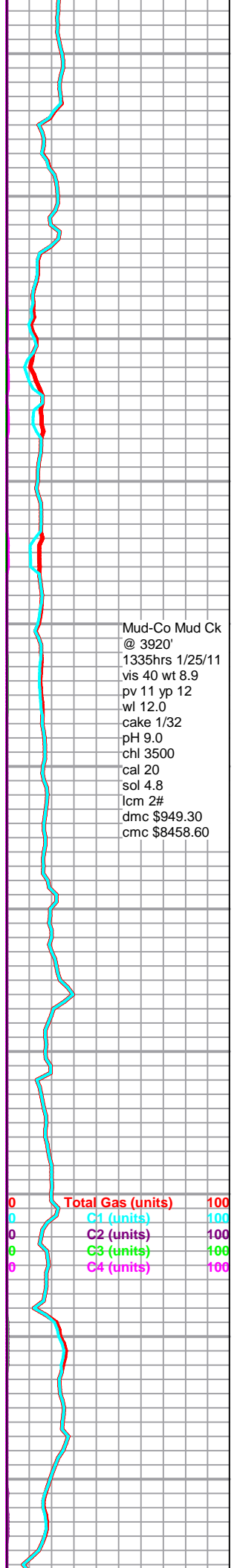
Lecompton 3965 -1146

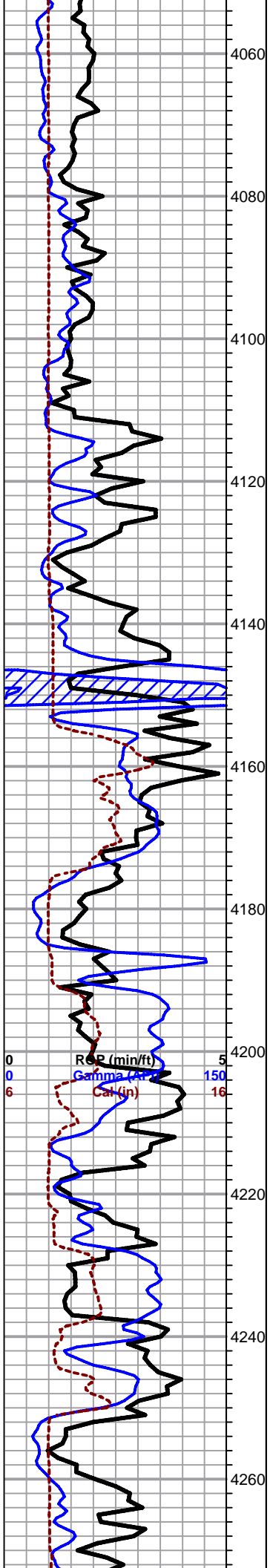
limestone, light gray to cream, microcrystalline, grainy fossiliferous to bioclastic, some scattered interclast porosity, chalky, flood gray and red shales, no shows, fairly even light green mineral fluorescence

limestones as above

limestone, cream to light gray, very fossiliferous to bioclastic, chalky, weathered in part, poor visible porosity, abundant chalk, 20-30%

Mud-Co Mud Ck @ 3920'
1335hrs 1/25/11
vis 40 wt 8.9
pv 11 yp 12
wl 12.0
cake 1/32
pH 9.0
chl 3500
cal 20
sol 4.8
lcm 2#
dmc \$949.30
cmc \$8458.60





as above, limestones have abundant secondary calcite crystals

limestone, cream to tan and brown, micro to cryptocrystalline, dense, fossiliferous, some secondary calcite, no shows

Heebner 4146 -1327

black carbonaceous shale
mixed gray, soft gray, red and green shales

Toronto

limestone, white to light gray, microcrystalline, fossiliferous, grainy/chalky to compact and dense, poor visible porosity, abundant chalk, some scattered white cherts, no shows, fairly even blue/white, green/white fluorescence

Douglas

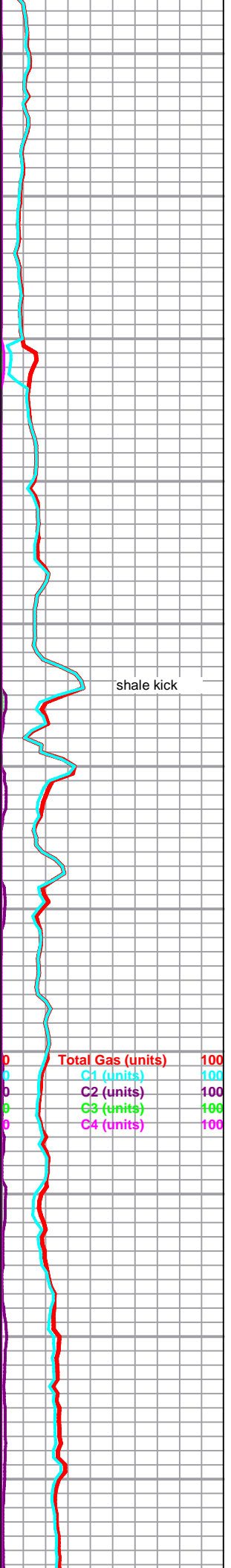
mixed shale

limestone, gray to gray/green, microcrystalline, arenaceous to lithographic, some gray to tan, fossiliferous, tan, poor visible porosity, no shows, fairly even blue/white to green/white fluorescence, some chalk

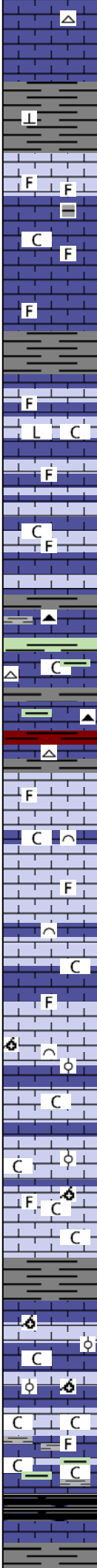
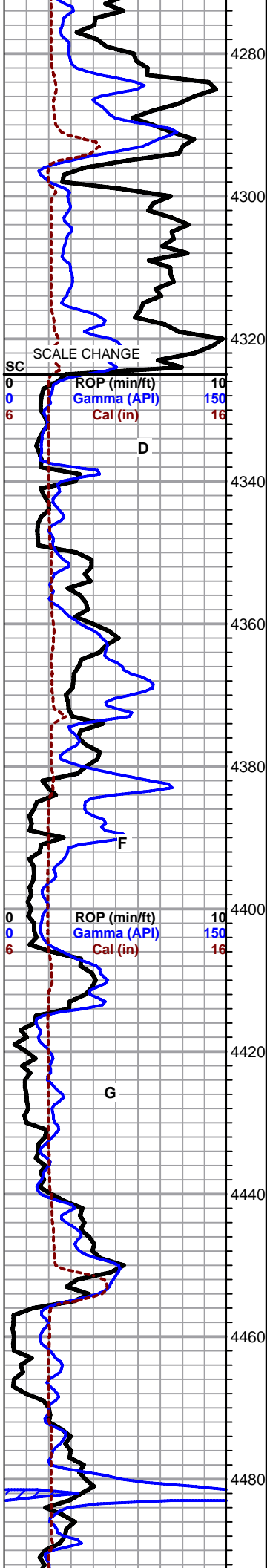
mixed shales

Lansing 4251 -1432

limestone, white to cream, micro to cryptocrystalline, fossiliferous, smooth compact to grainy, with: chert, white to gray and tan, fossiliferous, sharp, fresh, no shows, fairly even bright bluish/white fluorescence, some scattered fair green



shale kick



gray earthy limey shale to shaley limes

limestone, cream, microcrystalline, very fossiliferous, grainy, some shale inclusions, poor visible porosity, no shows, grading to: limestone, tan to gray, dense fossiliferous with white to light gray, slightly fossiliferous, fairly chalky, no shows

limestone, mixed fossiliferous, grainy to earthy, some interclast porosity, some compact cryptocrystalline lithographic with fair solution vugs, moderate chalk in samples, some scattered tan cherts, no shows

limestone, gray to brown mottled, chalky, earthy, with mixed shales, black, gray and brown cherts

limestone, mixed fossiliferous to bioclastic, poor visible overall porosity, chalky in part, abundant dark gray, cherty, dense limestones, no shows

limestone, mixed fossiliferous to bioclastic, chalky, some scattered oolitic and oomoldic, no shows

increasing oomoldic

limestones, fossiliferous, chalky to dense, flood chalk and white fresh chert, some cherty inclusions in limestones

limestone, tan to cream, oolitic to oomoldic, good oomold porosity, barren, abundant chalk, barren, yellow fluorescence

weathered chalky limestones, fossiliferous, flood chalk, mixed shales

MUNCIE CREEK SHALE - black carbonaceous

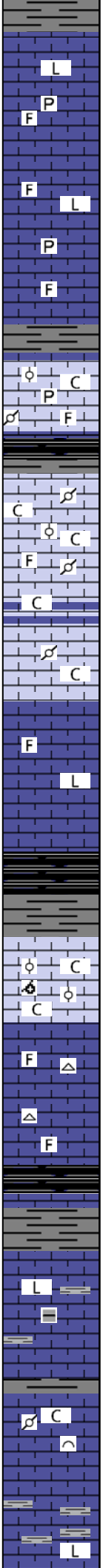
Mud-Co Mud Ck
 @ 4329'
 0810 hrs 1/26/11
 vis 52 wt 9.4
 pv 14 yp 15
 wl 11.2
 cake 1/32
 pH 9.0
 chl 4100
 cal 60
 sol 7.6
 lcm 2#
 dmc \$1451.60
 cmc \$9910.20

0	Total Gas (units)	100
0	C1 (units)	100
0	C2 (units)	100
0	C3 (units)	100
0	C4 (units)	100

shale kick

cfs @ 4500 ft
1550 hrs 1/26/11

4500
4520
4540
4560
4580
4600
4620
4640
4660
4680
4700



limestone, cream to gray, micro-cryptocrystalline, fossiliferous to lithographic, trace pyritic, no visible porosity, some fair mineral fluorescence, no shows

as above

limestone, white to light gray, microcrystalline, chalky, grainy, with limestone, fossiliferous in part, some weathered, with limestone, gray mottled, pelletal, oolitic, very chalky, abundant chalk in samples, some pyrite nodules

as above

limestone, gray to tan, cryptocrystalline, dense, fossiliferous to lithographic, no shows

Stark Shale 4612 -1793
gassy black carbonaceous shale

limestone, white to cream, oolitic to oomoldic, some fair oomold porosity, barren, no fluorescence, some oolitic with brown crystalline replacement around oolites, some completely replaced, light fluorescence, no show, abundant chalk in samples

limestone, cream to gray, dense to chalky fossiliferous, with chert, gray, frosted fossiliferous, sharp, fresh, no shows or fluorescence, still carrying abundant black carbonaceous shale in samples

black carbonaceous shale

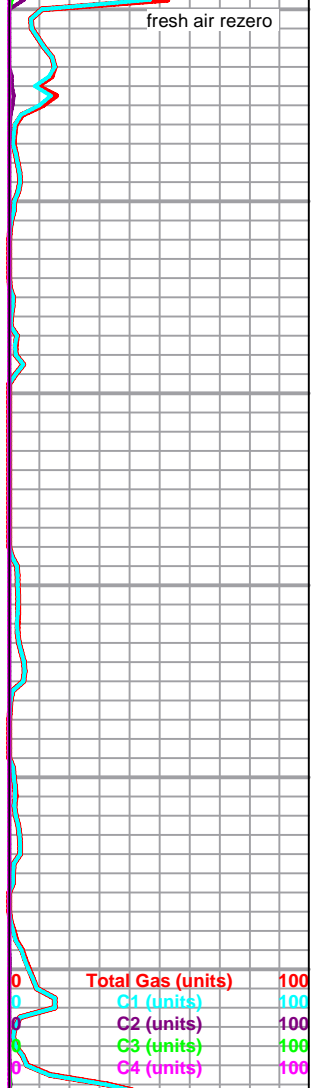
limestone, dark gray, dense, lithographic, some shaley, with dark gray limey shale

limestone, light gray to cream, mottled, bioclastic, some pelletal to oolitic, chalky, abundant chalk in samples, no shows

limestone, dark gray, cryptocrystalline, lithographic, dense, some dark to lighter gray mottled, slightly brittle/weathered, abundant dark gray to black shale, some scattered chert

ROP (min/ft) 10
Gamma (API) 150
Cal (in) 16

cfs @ 4655 ft
0100 hrs 1/27/11

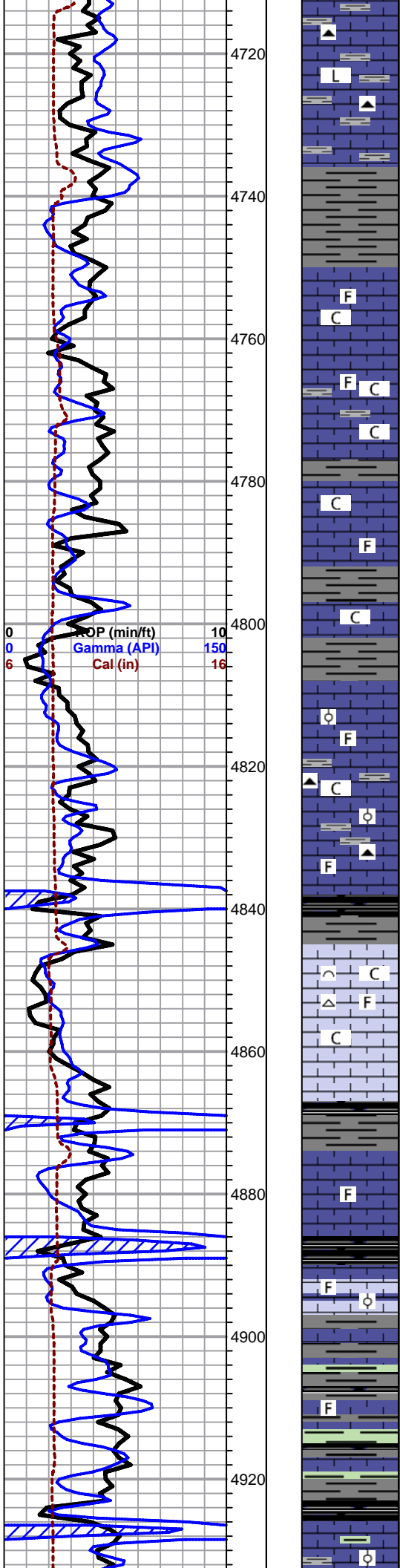


fresh air rezero

shale gas

gas lagging thru here, 22 min rig check during connection @ 4633'

shale gas recycles



dark gray to black shale
Marmaton log top 4741 -1922

Marmaton 4750 -1931
 limestone, cream, micro to cryptocrystalline, fossiliferous to smooth lithographic, chalky in part, mostly dense, some scattered mineral fluorescence, no shows

as above, increasing chalk in samples

as above

limestone, cream to light gray and white, microcrystalline, fossiliferous to oolitic, slightly cherty to chalky, poor visible porosity, no shows, some chalk, scattered shales and gray chert

Pawnee 4841 -2022

limestone, white to cream, cryptocrystalline, chalky fossiliferous to bioclastic, some white microcrystalline, grainy, poor visible porosity, abundant chalk in samples, some scattered gray cherts, fossiliferous, some scattered fluorescence, no shows

limestone, gray to cream, microcrystalline, fossiliferous, dense, no shows

Cherokee 4886 -2067

black carbonaceous shale

limestone, cream to gray, micro-cryptocrystalline, fossiliferous to oolitic, chalky in part, no visible porosity, no shows, with oolitic cherts, some scattered faint fluorescence

grades to black, green and gray shales, some argillaceous, with stringers of dark gray cherty limestone, dense fossiliferous, and limestones as above

limestone, mixed gray to tan and brown, some mottled, crypto to microcrystalline, fossiliferous to oolitic, mostly dense, no shows, scattered shales, scattered faint fluorescence

fresh air re-zero

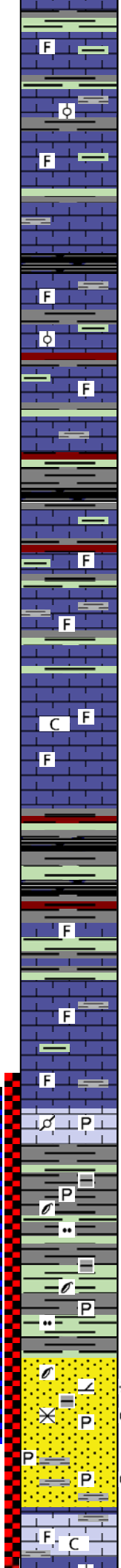
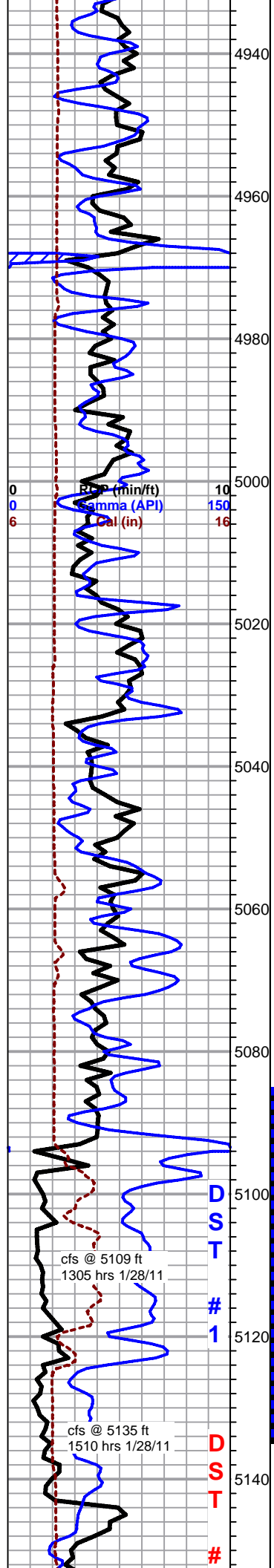
Mud-Co Mud Ck
 @ 4774'
 0855 hrs 1/27/11
 vis 52 wt 9.3
 pv 16 yp 17
 wl 8.8
 cake 1/32
 pH 9.5
 chl 2800
 cal 20
 sol 7.0
 lcm 1#
 dmc \$3051.35
 Total Gas @ cmc \$12961.55
 C1 (units) 100
 C2 (units) 100
 C3 (units) 100
 C4 (units) 100

shale gas kick

scattered shales, scattered faint fluorescent

4940
4960
4980
5000
5020
5040
5060
5080
5100
5120
5140

0
0
6
Rt (min/ft)
Gamma (API)
Cal (in)



mix non descript fossiliferous limestones, dense, with dark to light arenaceous to cherty limestone, mixed shales, no shows

flood mixed shales

limestone, cream to gray, tan to brown, mixed fossiliferous to cherty lithographic, no visible porosity, no shows, abundant shale

as above

limestone, cream to light gray, cryptocrystalline, fossiliferous, chalky to grainy, poor visible porosity, no fluorescence

mixed black, brown and gray shales

flood dark gray to black limestone, dense, cherty, fossiliferous, with shale as above

DST # 1, 5-90-60-120, rec. 430' GIP, 135' GHOCM, FP's 36-40# & 57-68#, SIP's 780-703#, HSH's 2438-2422#, BHT 122 deg F

limestone, gray to light brown, slightly mottled, dense, microcrystalline fossiliferous, some slightly pyritic, no shows grading to: (5108 30 min sample) flood of soft brittle limestone, gray to brown mottled, pelletal, very pyritic, no show or fluorescence

Morrow 5093 -2274

shale soft gray, silty, abundant carbon plant matter and imprints, some pyritic, some light green, soft, silty

- 📄 Kenneth Dirks 1-8 DST #1.pdf
- 📄 Kenneth Dirks 1-8 DST #2.pdf

DST #2, 5-90-120-180, rec. 590' GIP, 150' GHOCM, FP's 34-39# & 56-75#, SIP's 767-702#, HSH's 2433-2416#, BHT 119 deg F

sandstone, fine grained quartz, sub round to sub angular, well cemented, dolomitic, much interstitial shale/plant frag. fill, dolomite and abundant pyrite inclusions, fair scattered porosity, fairly even saturated stain, good show of gas and free oil, strong odor, no min. fluor., good milky white cut fluorescence

dark shales with much pyrite, some sand clusters, more angular and coarse, some very pyritic, barren to saturated tarry stain, slight show free oil, no odor in cup, some pyrite has sand grains and molds, obviously part of sand body

Mississippian (Chester) 5144 -2325

limestone, white chalky to white and gray mottled, some weathered, oolitic, some dense gray fossiliferous, moderate chalk in sample, still carrying mostly shale from above

SCALE CHANGE

0	Total Gas (units)	200
0	C1 (units)	200
0	C2 (units)	200
0	C3 (units)	200
0	C4 (units)	200

short trip at 5050 ft, resume drilling 0915 hrs 1/28/11

Mud-Co Mud Ck @ 5050' 0720 hrs 1/28/11 vis 56 wt 9.3 pv 15 yp 15 wl 11.2 cake 1/32 pH 9.0 chl 1700 cal 20 sol 7.0 lcm 2# dmc \$1725.65 cmc \$14687.20

pipe strap 2.3 ft long to board deviation survey 3/4 deg

141 total units

this high gas background from DST's

Mud-Co Mud Ck @ 5135' 0655 hrs 1/29/11

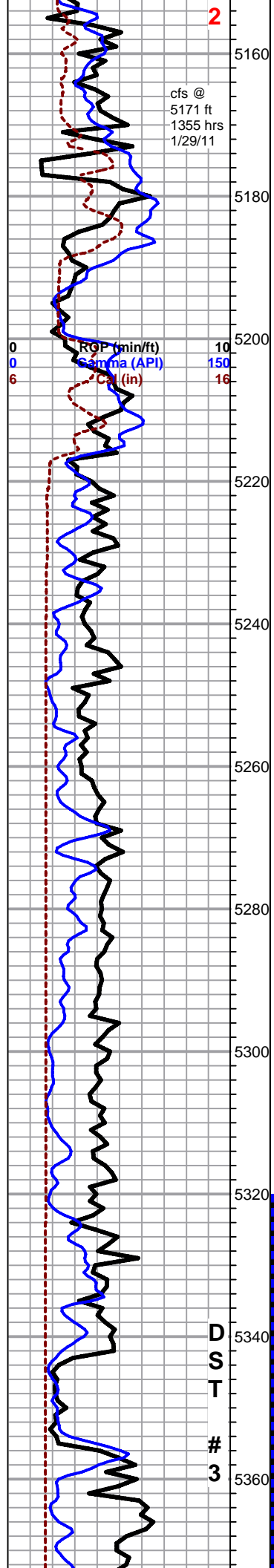
D
S
T

1

D
S
T
#

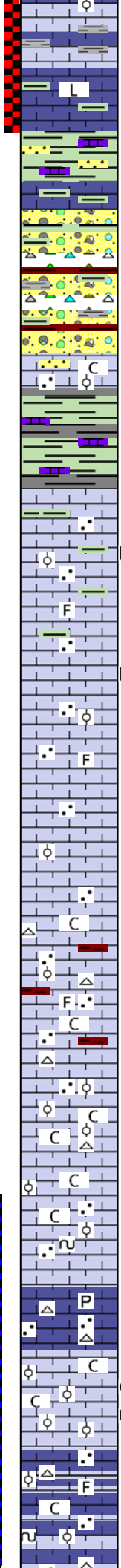
cfs @ 5109 ft
1305 hrs 1/28/11

cfs @ 5135 ft
1510 hrs 1/28/11



cfs @
5171 ft
1355 hrs
1/29/11

ROP (min/ft) 10
Gamma (API) 150
Cal (in) 16



shale from above

5171 60 min sample, limestone, light gray to pale green, cryptocrystalline, compact dense, lithographic, still carrying abundant shales, influx some light green argillaceous shale

limestone a.a. flood variable green and olive shales, some olive chert, black to maroon mottled sdy/slty shale, carrying some sandstone as above

shaley conglomerate, mostly greens, but samples wash red, mixed limestone and chert, abundant dark green sandstone, very fine grained, well sorted and rounded, fair cemented, dolomitic, poor visible porosity, no show- found 1 large black dense sand cluster, bleeds profusely, no odor or fluors, only piece in whole cup

limestone, cream to white, oolitic and sandy, dense, with increasing green sandstone as above, with appx. 20% chalk in samples, no shows

mostly mixed shale with lithographic pale green limestone, @ 5330 sample decreasing shale and lithographic lime, grading back to sandy fossiliferous and oolitic limestone

Miss St. Gen. 5221 -2402

sandy limestone, white to cream and light green, fossiliferous to oolitic, with black to brown, spotty to saturated stain, no show free oil or gas, no odor, no fluorescence, still carrying abundat shale

sandy limestone as above, marked decrease in staining, some non sandy white fossiliferous to oolitic, no other show, no fluorescence

as above, staining has dropped completely out of samples

limestones as above; beginning in 5290 sample, flood of orange to red opaque to translucent chert, fossiliferous, sharp, fresh, abundant red shales, scattered chalk, no show

5320 sample, as above picking up abundant limestone, white to light gray, mature oolitic, chalky, friable, some sandy, still carrying some chert as above

St. Louis 5318

limestone, mix of sandy gray to white and oolitic, mature to flattened, some sandy, trace glauconitic, chalky, abundant chalk in samples

5350 sample, oolitic facies above drop out, influx limestone, light gray, cryptocrystalline, dense, sandy, some pyritic, with chert, frosted gray, opaque, fossiliferous, sharp, fresh, some scattered sandy oolitic, no shows, very pale even fluorescence

limestone, white to cream, mature to slightly flattened oolitic, very chalky, poor visible porosity, some very friable, some sandy, poor visible porosity, no stain, fair show free oil in tray, no odor, some light green min. fluor., light cut with bright halo, abundant chalk, some chert as above

limestone, mixed light gray to white, sandy fossiliferous to oolitic and microcrystalline sandy, slighty glauconitic, no shows, some faint fluorescence, some scattered chert as above

Kenneth Dirks 1-8 DST #3.pdf

as above, increasing chalky mature and flattened oolitic, some sandy and glauconitic

