



**TRILOBITE  
TESTING, INC**

# DRILL STEM TEST REPORT

Woolsey Operating Co  
125 N Market Ste 1000  
Wichita, KS 67202  
ATTN: Bill Klaver

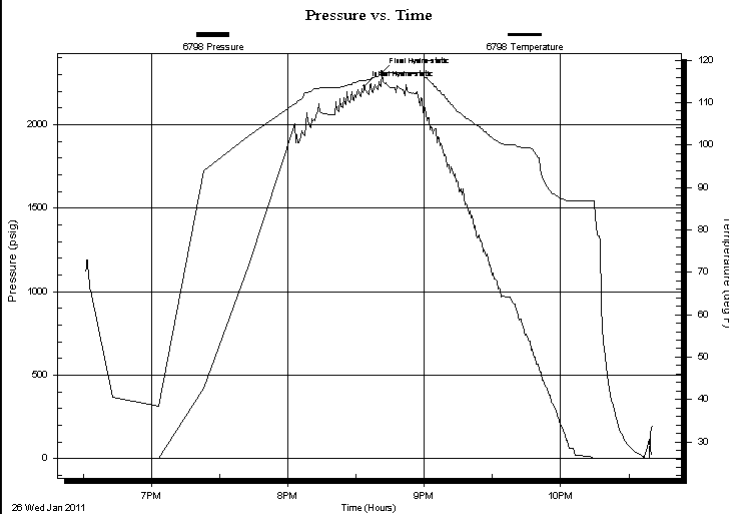
**Schooley B #1**  
**4-34S-11W**  
Job Ticket: 041578      **DST#: 1**  
Test Start: 2011.01.26 @ 18:30:58

## GENERAL INFORMATION:

Formation: **MISSISSIPPI**  
Deviated: No Whipstock: ft (KB)      Test Type: Conventional Bottom Hole  
Time Tool Opened: 00:00:00      Tester: Leal Cason  
Time Test Ended: 22:40:43      Unit No: 45  
**Interval: 4674.00 ft (KB) To 4828.00 ft (KB) (TVD)**      Reference Elevations: 1390.00 ft (KB)  
Total Depth: 4928.00 ft (KB) (TVD)      1379.00 ft (CF)  
Hole Diameter: 7.88 inches Hole Condition: Good      KB to GR/CF: 11.00 ft

**Serial #: 6798      Inside**  
Press @ Run Depth: psig @ 4675.00 ft (KB)      Capacity: 8000.00 psig  
Start Date: 2011.01.26      End Date: 2011.01.26      Last Calib.: 2011.01.26  
Start Time: 18:30:59      End Time: 22:40:43      Time On Btm: 2011.01.26 @ 20:33:43  
Time Off Btm: 2011.01.26 @ 20:41:28

**TEST COMMENT:** Unable To Get To Bottom, Tool Stacked Out Approximatly 140 Feet From Bottom



## PRESSURE SUMMARY

Time (Min.)	Pressure (psig)	Temp (deg F)	Annotation
0	2233.08	115.27	Initial Hydro-static
8	2313.13	116.62	Final Hydro-static

## Recovery

Length (ft)	Description	Volume (bbl)

## Gas Rates

Choke (inches)	Pressure (psig)	Gas Rate (Mcf/d)



**TRILOBITE  
TESTING, INC**

# DRILL STEM TEST REPORT

**FLUID SUMMARY**

Woolsey Operating Co

**Schooley B #1**

125 N Market Ste 1000  
Wichita, KS 67202

**4-34S-11W**

Job Ticket: 041578

**DST#: 1**

ATTN: Bill Klaver

Test Start: 2011.01.26 @ 18:30:58

## Mud and Cushion Information

Mud Type: Gel Chem

Cushion Type:

Oil API:

deg API

Mud Weight: 9.00 lb/gal

Cushion Length:

ft

Water Salinity:

ppm

Viscosity: 49.00 sec/qt

Cushion Volume:

bbbl

Water Loss: 10.19 in<sup>3</sup>

Gas Cushion Type:

Resistivity: ohm.m

Gas Cushion Pressure:

psig

Salinity: 3000.00 ppm

Filter Cake: 0.20 inches

## Recovery Information

Recovery Table

Length ft	Description	Volume bbbl

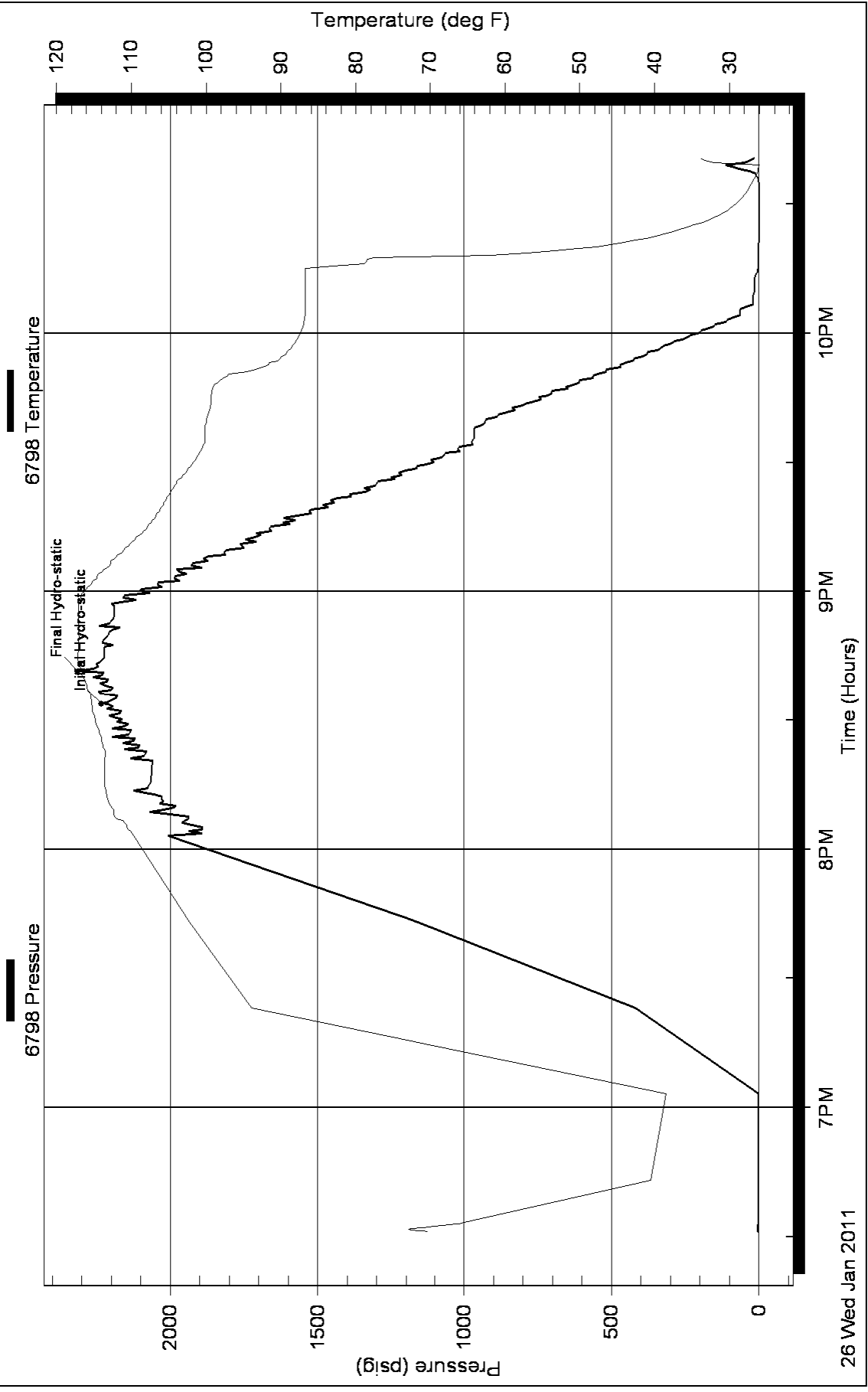
Total Length:                      ft      Total Volume:                      bbl

Num Fluid Samples: 0                      Num Gas Bombs:      0                      Serial #:

Laboratory Name:                      Laboratory Location:

Recovery Comments:

### Pressure vs. Time





**TRILOBITE  
TESTING, INC**

# DRILL STEM TEST REPORT

Woolsey Operating Co  
125 N Market Ste 1000  
Wichita, KS 67202  
ATTN: Bill Klaver

**Schooley B #1**  
**4-34S-11W**  
Job Ticket: 041579      **DST#: 2**  
Test Start: 2011.01.27 @ 05:32:57

## GENERAL INFORMATION:

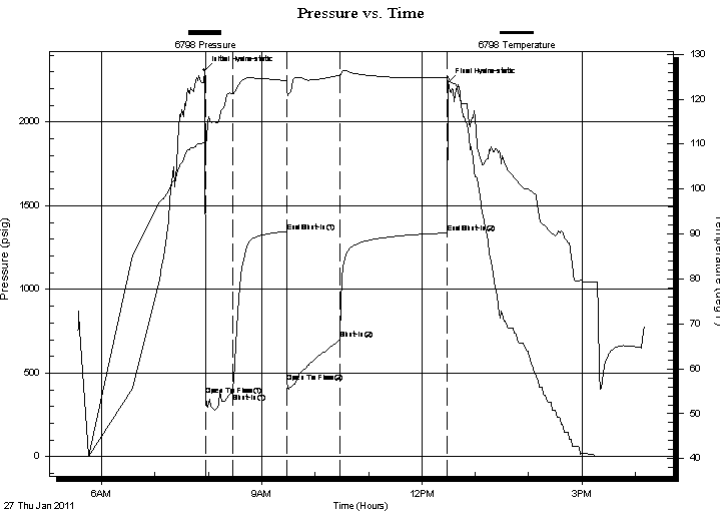
Formation: **Mississippi**  
Deviated: No      Whipstock:      ft (KB)  
Time Tool Opened: 07:56:57  
Time Test Ended: 16:10:57  
Interval: **4674.00 ft (KB) To 4828.00 ft (KB) (TVD)**  
Total Depth: 4928.00 ft (KB) (TVD)  
Hole Diameter: 7.88 inches      Hole Condition: Good  
Reference Elevations: 1390.00 ft (KB)  
1379.00 ft (CF)  
KB to GR/CF: 11.00 ft  
Test Type: Conventional Bottom Hole  
Tester: Leal Cason  
Unit No: 45

## Serial #: 6798

Inside

Press @ Run Depth: 702.04 psig @ 4675.00 ft (KB)      Capacity: 8000.00 psig  
Start Date: 2011.01.27      End Date: 2011.01.27      Last Calib.: 2011.01.27  
Start Time: 05:32:58      End Time: 16:10:57      Time On Btm: 2011.01.27 @ 07:55:27  
Time Off Btm: 2011.01.27 @ 12:29:42

**TEST COMMENT:** IF: Strong Blow , BOB In 1 minute, GTS in 10 Minutes, Gauged Gas & Caught Sample  
IS: Bled Off, Blow back Built To BOB in 26 minutes  
FF: Strong Blow , BOB and GTS Immediate, Gauged Gas  
FS: Bled Off,



## PRESSURE SUMMARY

Time (Min.)	Pressure (psig)	Temp (deg F)	Annotation
0	2308.75	110.37	Initial Hydro-static
2	368.03	110.08	Open To Flow (1)
32	378.99	121.24	Shut-In(1)
93	1346.57	124.02	End Shut-In(1)
93	446.12	121.92	Open To Flow (2)
153	702.04	125.37	Shut-In(2)
273	1337.08	124.70	End Shut-In(2)
275	2236.91	124.97	Final Hydro-static

## Recovery

Length (ft)	Description	Volume (bbl)
0.00	3329 Feet GIP	0.00
180.00	GSY OMCW 10%G 10%O 10%M 70%W	2.52
450.00	GSY MOCW 18%G 10%M 12%O 60%W	6.31
180.00	GSY MOCW 30%G 20%M 20%O 30%W	2.52
360.00	GSY MWCO 40%G 6%M 24%W 30%C	5.05
180.00	GSY MWCO 40%G 12%M 12%W 36%C	2.52

## Gas Rates

	Choke (inches)	Pressure (psig)	Gas Rate (Mcf/d)
First Gas Rate	0.50	7.50	148.41
Last Gas Rate	0.25	3.00	27.76
Max. Gas Rate	0.25	12.00	42.04



**TRILOBITE  
TESTING, INC**

# DRILL STEM TEST REPORT

**FLUID SUMMARY**

Woolsey Operating Co  
125 N Market Ste 1000  
Wichita, KS 67202  
ATTN: Bill Klaver

**Schooley B #1**  
**4-34S-11W**  
Job Ticket: 041579      **DST#: 2**  
Test Start: 2011.01.27 @ 05:32:57

## Mud and Cushion Information

Mud Type: Gel Chem	Cushion Type:	Oil API:	deg API
Mud Weight: 9.00 lb/gal	Cushion Length: ft	Water Salinity:	44000 ppm
Viscosity: 51.00 sec/qt	Cushion Volume: bbl		
Water Loss: 10.18 in <sup>3</sup>	Gas Cushion Type:		
Resistivity: ohm.m	Gas Cushion Pressure: psig		
Salinity: 3000.00 ppm			
Filter Cake: 0.20 inches			

## Recovery Information

Recovery Table

Length ft	Description	Volume bbl
0.00	3329 Feet GIP	0.000
180.00	GSY OMCW 10%G 10%O 10%M 70%W	2.525
450.00	GSY MOCW 18%G 10%M 12%O 60%W	6.312
180.00	GSY MOCW 30%G 20%M 20%O 30%W	2.525
360.00	GSY MVCO 40%G 6%M 24%W 30%O	5.050
180.00	GSY MVCO 40%G 12%M 12%W 36%O	2.525

Total Length: 1350.00 ft      Total Volume: 18.937 bbl  
Num Fluid Samples: 1      Num Gas Bombs: 0      Serial #:  
Laboratory Name: Caraway      Laboratory Location: Liberal, KS  
Recovery Comments:



**TRILOBITE  
TESTING, INC.**

# DRILL STEM TEST REPORT

**GAS RATES**

Woolsey Operating Co

**Schooley B #1**

125 N Market Ste 1000  
Wichita, KS 67202

**4-34S-11W**

Job Ticket: 041579

**DST#: 2**

ATTN: Bill Klaver

Test Start: 2011.01.27 @ 05:32:57

## Gas Rates Information

Temperature: 59 deg C  
Relative Density: 0.65  
Z Factor: 0.8

Gas Rates Table

Flow Period	Elapsed Time	Choke (mm)	Pressure (kPaa)	Gas Rate (m <sup>3</sup> /d)
1	10	0.50	7.50	148.41
1	10	0.50	7.50	148.41
1	20	0.50	3.00	118.05
1	20	0.50	3.00	118.05
2	10	0.25	9.00	37.28
2	20	0.25	12.00	42.04
2	30	0.25	9.00	37.28
2	40	0.25	5.00	30.94
2	50	0.25	3.00	27.76

### Pressure vs. Time

