



Woolsey Operating Company, LLC

Scale 1:240 (5"=100') Imperial

Measured Depth Log

Well Name: Schooley B #1
Location: N2 SW NW NW
License Number: 15-007-23642
Spud Date: January 19, 2011
Surface Coordinates: 822' FNL & 370' FWL Section 4 Twp 35S-Rge 11W
Field: Stranathan
Bottom Hole Coordinates: Verticle Hole
Region: Barber Co. Kansas
Drilling Completed: January 30, 2011
Ground Elevation (ft): 1379' K.B. Elevation (ft): 1390'
Logged Interval (ft): Surface To: 5463' Total Depth (ft): 5463'
Formation: Total Depth in Arbuckle
Type of Drilling Fluid: Chemical Displaced at 3405'
Printed by WellSight Log Viewer from WellSight Systems 1-800-447-1534 www.WellSight.com

OPERATOR

Company: Woolsey Operating Company, LLC
Address: 125 N. Market, Suite 1000
Wichita, KS 67202

GEOLOGIST

Name: Bill Klaver
Company: Woolsey Operating Co. LLC
Address: 125 N. Market, Wichita Kansas, 67202

COMMENTS

Surface Casing: Ran 6 joints new 10 3/4" X 32.75# to 238' KB (tally 235'), cemented with 220 sx Class A, 2% gel, 3% CC. Cement did circulate.

Production Casing: 5 1/2"

Deviation Surveys: 3/4 at 240', 1/4 at 754', 1/4 at 1282', 1/2 at 1753', 1/2 at 2278', 1 t 2780', 1/2 at 3248', 1/2 at 3738', 1/4 at 4249', 3/4 at 4828',

Pipe Strap @ 4828', Strap: 4842.74', Board: 4840.10'. Strap 2.64' long, no correction made to the board.

Duke Rig 10 Bit Record:

#1 14 3/4" HTC RR in at O' out at 240'. 240'/4.75 hours

#2 7 7/8" Varrel HE-29 in at 240' out at 5339', 5099'/168 3/4 hrs

#3 7 7/8" Varrel HE-29 RR in at 5339', out at 5463'

Gas Detector: Woolsey Operating Co. Gas Trailer #2

Mud System: Mud Co. Brad Bortz, Engineer

DSTs: Trilobite Testing Inc. Leal Cason, Tester

OH Logs:

DSTs


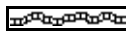
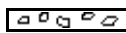

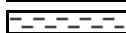









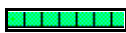
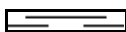







DST #1 Mississippi, 4674'-4828', Misrun, unable to get to bottom, tool stacked out approximately 140' off bottom.

DST #2 Mississippi, 4674'-4828', 30"-60"-60"-120". SB BOB in 1 minute, GTS 10 minutes into IFP. Rec: 3329' GIP, 180' GOMCW (10%G, 10%O, 10%M, 70%W), 450' GMOCW (18%G, 10%M, 12%O, 60%W), 180' GMOCW (30%G, 20%M, 20%O, 30%W), 360' GMWCO (40%G, 6%M, 24%W, 30%O), 180' MWCO (40%G, 12%M, 12%W, 36%O). IHP 2308, IFP 368-378, ISIP 1346, FFP 446-702, FSIP 1337, FHP 2236. BHT 125 degrees. IFP 10" 148.4 MCF, 20-30" 118 MCF. FFP 10" 37.2 MCF, 20" 42 MCF, 30" 37.2 MCF, 40" 30.9 MCF, 50-60" 27.7 MCF.

CREWS

**Joe Livingston, Tool Pusher
 Scott Edwards, Days
 Colby Crawford, Evening
 Alex Ordonez, Morning
 Ron Burns, Relief**

ROCK TYPES

 Anhy  Bent  Brec  Cht  Clyst  Coal	 Congl  Sdy dolo  Shy dolo  Dol  Gyp  Sdy lmst	 Lmst  Mrlst  Salt  Shale  Slstst  Ss	 Black sh  Gry sh  Shale  Shyslstst  Sltysh
--	---	--	--

ACCESSORIES

MINERAL

- Anhy
- Arg
- Bent
- Bit
- Brecfrag
- Calc
- Carb
- Chtdk
- Chtlt
- Dol
- Ferrpel
- Ferr
- Glau
- Gyp
- Marl
- Nodule
- Phos
- Pyr
- Salt
- Sandy
- Silt

- Chlorite
- Dol
- Sand
- Slty

FOSSIL

- Algae
- Amph
- Belm
- Bioclst
- Brach
- Bryozoa
- Cephal
- Coral
- Crin
- Echin
- Fish
- Foram
- Fossil
- Gastro
- Oolite
- Ostra

- Pelec
- Pellet
- Pisolite
- Plant
- Strom
- Fuss
- Oomoldic

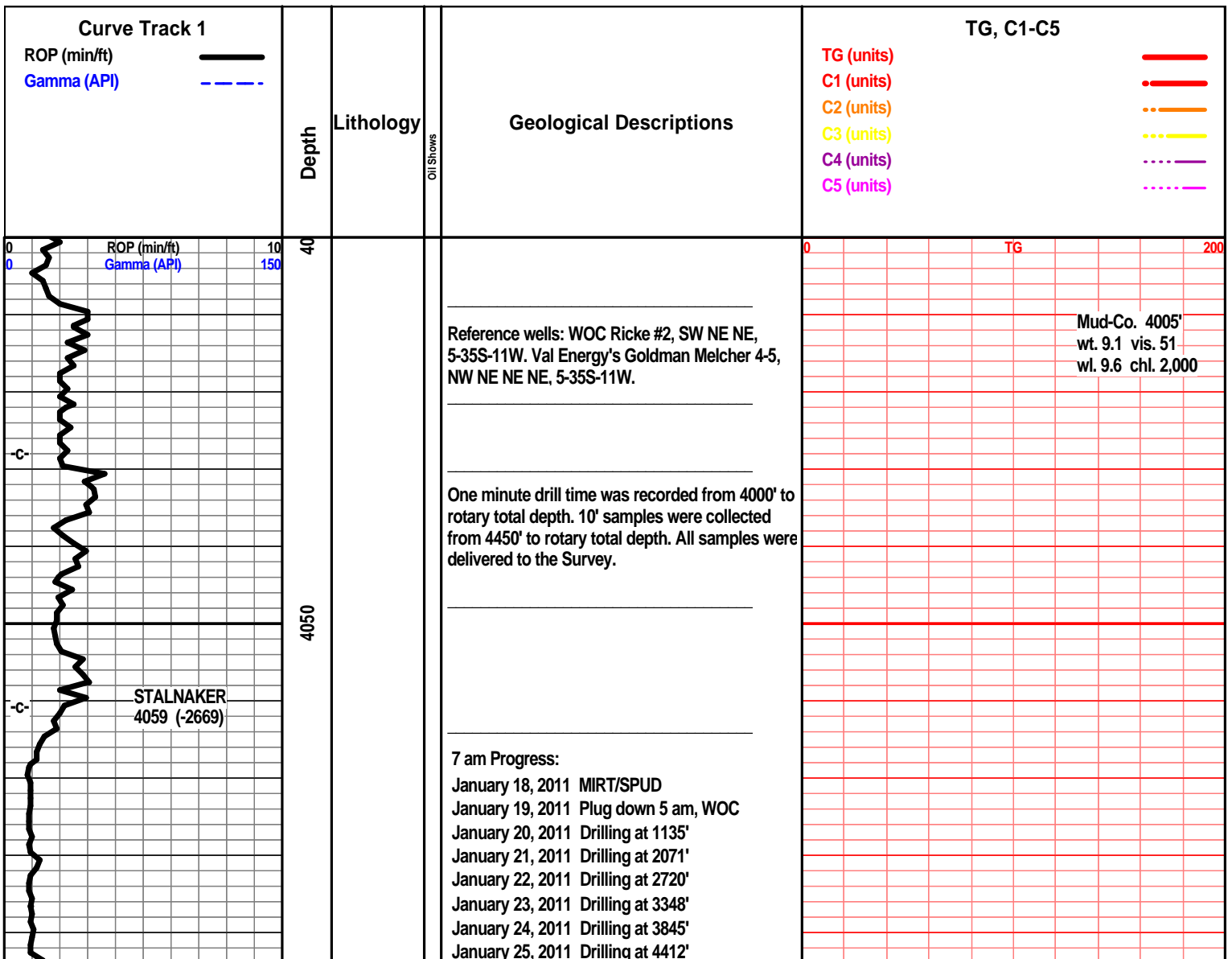
STRINGER

- Anhy
- Arg
- Bent
- Coal
- Dol
- Gyp
- Ls
- Mrst
- Slststrg
- Ssstrg
- Carbsh
- Clystn
- Dol

- Grysh
- Gryslt
- Lms
- Sandylms
- Sh
- Slstsn

TEXTURE

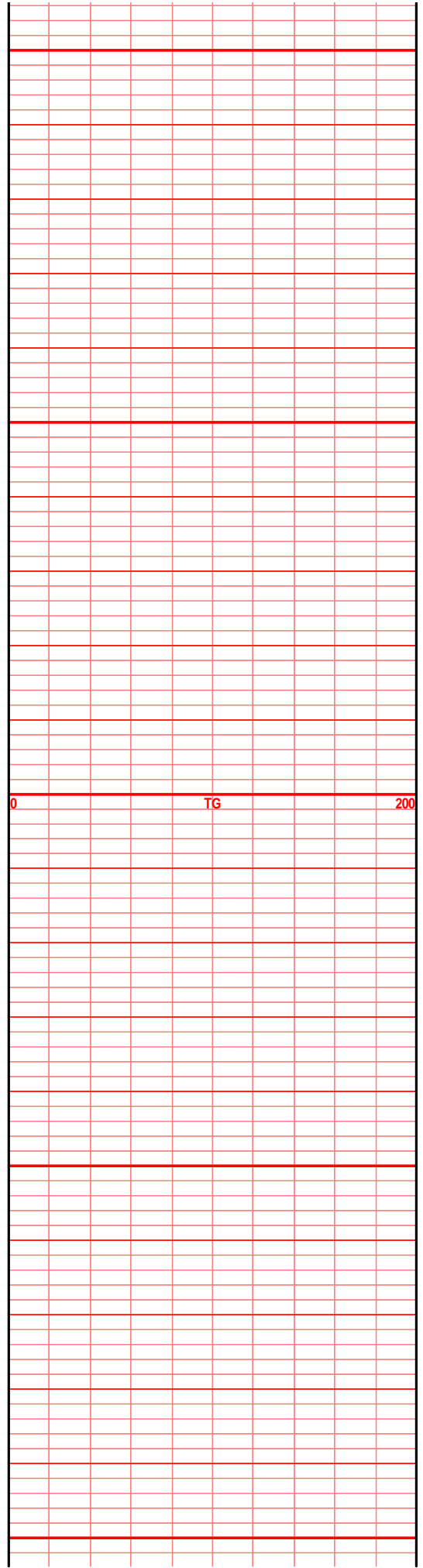
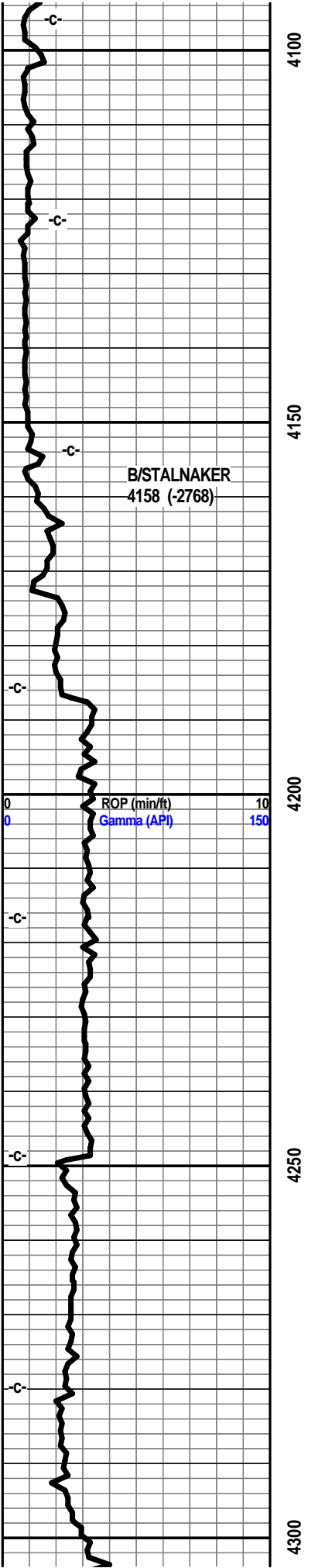
- Boundst
- Chalky
- Cryxln
- Earthy
- Finexln
- Grainst
- Lithogr
- Microxln
- Mudst
- Packst
- Wackest

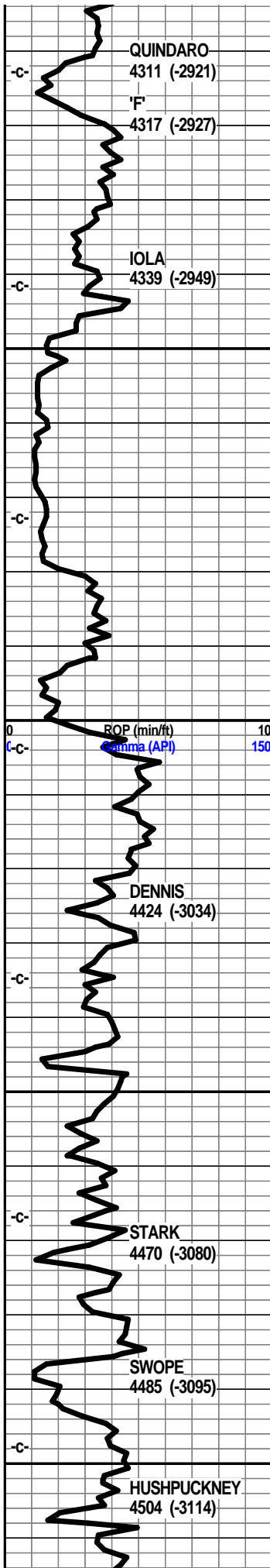


January 26, 2011 Drilling at 4689'
 January 27, 2011 DST #2 at 4828'
 January 28, 2011 Drilling at 4954'
 January 29, 2011 Drilling at 5328'
 January 30, 2011 Drilling at 5396'

E-Log Tops:

- Herington
- Onaga
- Wabaunsee
- Topeka
- LeCompton
- Kanwaka
- Elgin Sand
- Heebner
- Toronto
- Douglas Grp
- Stalnaker
- Quindaro
- Kansas City 'F'
- Kansas City 'Iola'
- Kansas City 'Drum'
- Kansas City 'Dennis'
- Stark
- Kansas City 'Swope'
- Hushpuckney
- Kansas City 'Hertha'
- B/Kansas City
- Pawnee
- Cherokee Group
- Mississippi
- C3
- C2A
- C2
- C1
- Kinderhook
- Woodford
- Maquoketa
- Viola
- Simpson
- Wilcox
- McLish Shale
- McLish Sand
- LTD



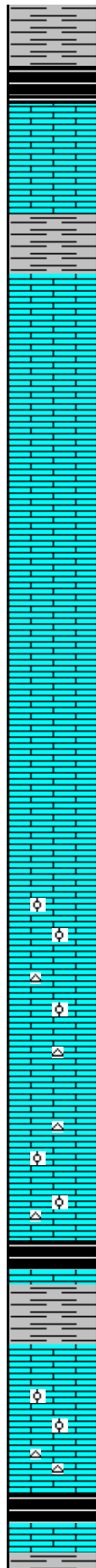


4350

4400

4450

4500



Oil and Gas Show Legend

- Gas
- Even Stain/Saturation
- ◐ Spotted Stain/Saturation
- Questionable
- ◑ Dead/Gilsonitic

lst wht crm tan f xln gran sub chlky soft, foss frags, tr ool, pelletal, foss mold, inter xln por, chrt wht shrp frsh opa

lst crm tan buff f xln sub chlky, mstly dns foss frags, tr ool, chrt wht lt gry shrp frsh opa

lst tan buff f xln blk dns hrd sub chlky foss frags, tr ool/pelletal, tr oomold por, chrt wht lt gry shrp frsh

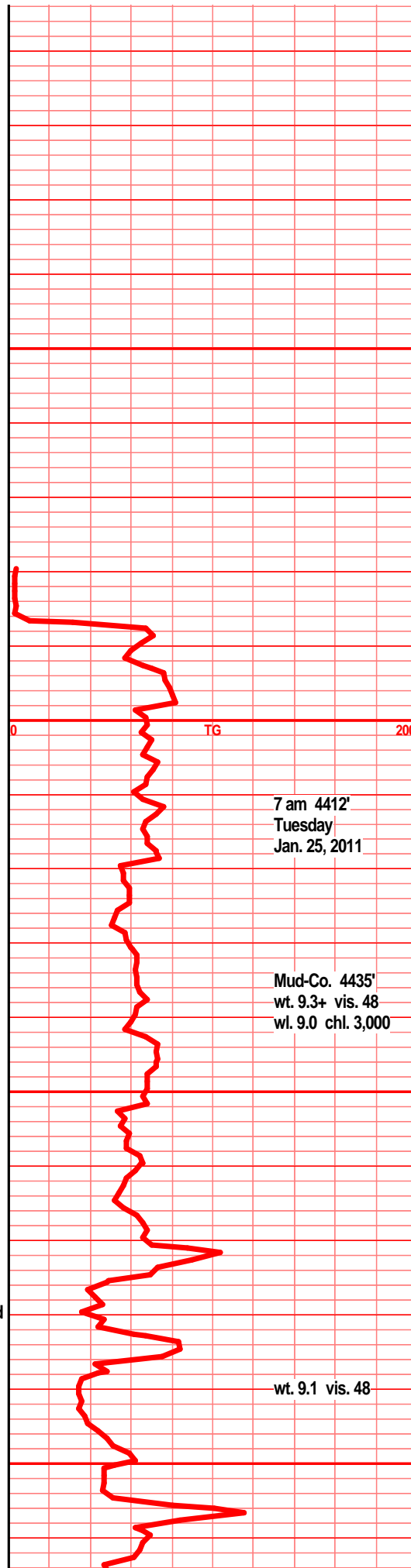
shl gry drk gry blk, blk carb, wxy grsy, tr gas bubs

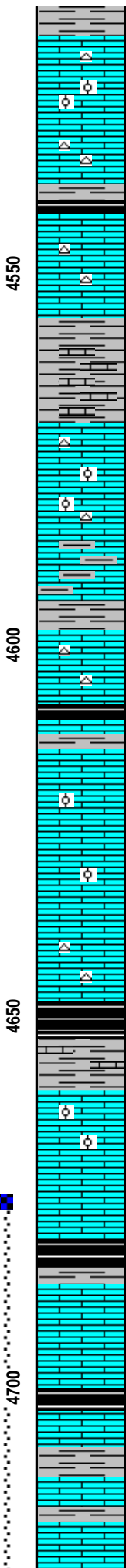
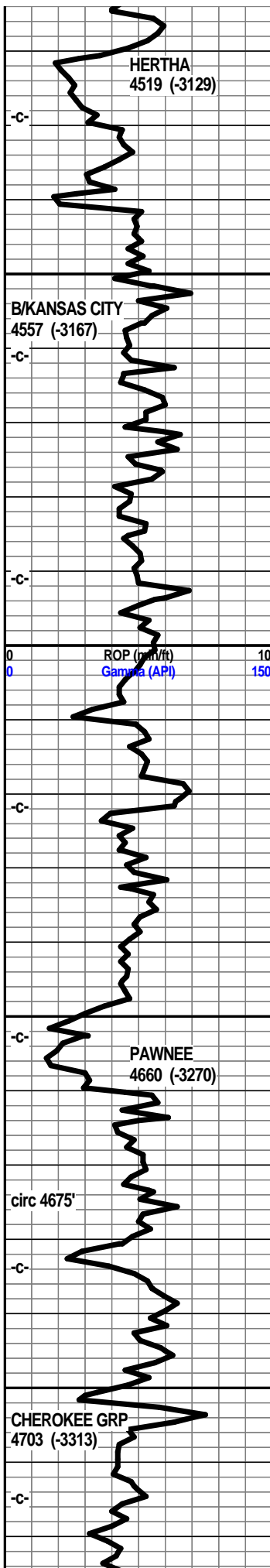
shl gry gry brn calc, lst tan gry brn vf xln dns hrd blk arg tr foss frags, chrt tan lt brn shrp frsh

lst crm buff tan f xln gran tr sub chlky, foss frags, micro ool, foss mold, oomold por, tr chrt tan lt gry shrp frsh foss

lst tan lt gry f vf xln dns hrd blk ang sub chlky micro foss, chrt tan gry shrp

shl gry drk gry blk, blk carb, blk ang pcs, wxy grys gas bubs, lst tan brn f vf xln dns, hrd blk arg, chrt tan brn shrp





lst buff tan tr lt gry f vfxn dns hrd blkly ang arg, foss frags.

lst crm buff tan tr lt gry f xln gran sub chlky foss frags tr ool, inter xln, foss mold por, chrt tan wht shrp frsh opa

lt tan buff lt gry f tr vfxln blkly dns hrd ang pcs, foss frags, foss ool, chrt wht tan shrp frsh opa

shl gry blk, blk carb, lst tan gry f vf xln dns hrd blkly ang arg silty, micro foss frags, tr chrt tan lt brn shrp frsh opa

lst tan gry brn f vf xln dns hrd ang arg silty, calc in prt, foss frags micro foss, shl gry brn calc blkly hrd ang pcs

shl gry gry/blue gran gritty calc, lst tan brn f mic xln dns hrd blkly arg, chrt tan brn shrp frsh

lst tan lt brn tr gry f vf xln dns hrd blkly ang massive, micro foss, foss frags, chrt tan brn shrp frsh foss opa

lst tan buff lt brn f vf lxn dns hrd blkly massive, micro foss frags, tr micro ool, nodular, chrt tan lt gry frsh shrp blkly

shl gry calc, shl gry green silty calc, lst tan buff crm, f vf xln blkly dns ang hrd, micro foss frags, calc xln fill, chrt tan crm shrp frsh opa blkly

tr shl gry blk, blk carb, lst tan buff crm vf xln dns hrd blkly ang micro foss, calc xln fill, chrt tan shrp frsh

lst crm buff tan f vf xln blkly dns hrd tr sub chlky micro foss, tr calc xln fill

lst buff crm tan f vf xln blkly dns hrd tr micro foss, tr xln fill,

lst crm buff tan bec lt gry tan w/depth, f vf xln dns hrd blkly tr sub chlky tr micro foss, tr chrt wht tan shrp frsh

shl gry drk gry blk, blk carb, blkly pcs, tr gas bubs, lst gry tan/brn vf xn dns hrd arg, tr foss frags

lst crm lt tan buff, f vf xln dns hrd blkly sub chlky in prt, foss frags, micro ool, calc xln fill, tr gas bubs 2-3 pcs, sli dull UV, nodor, NSFO

lst crm tan buff f vf xln dns hrd blkly ang, tr sub chlky in prt, foss frags, micro ool in prt, calc xln fill,

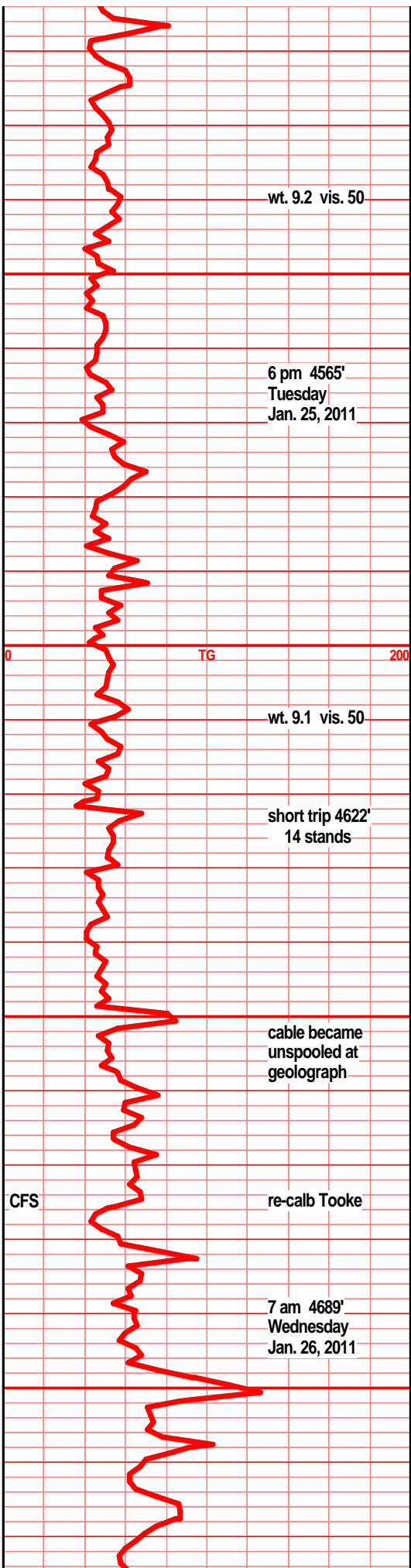
shl gry drk gry, shl blk carb, tr gas bubs, lst tan buff f xln blkly dns ang hrd

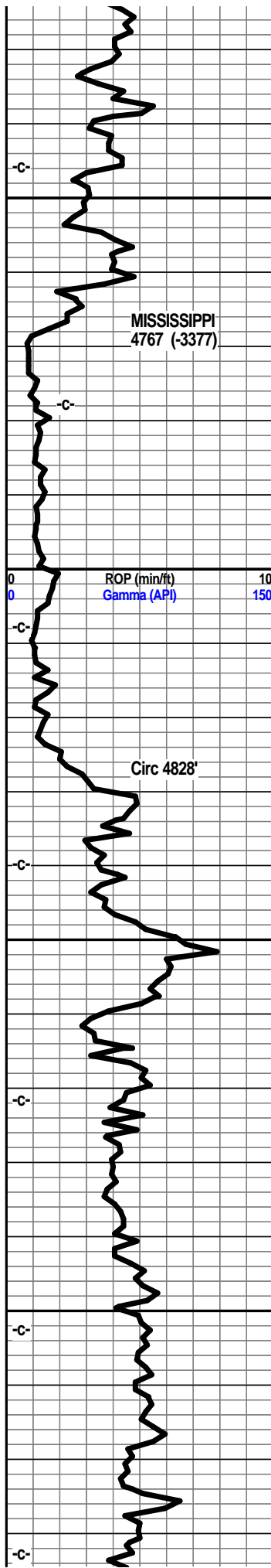
lst crm gry tan f vf xln dns hrd blkly, micro foss frag, micro ool, tr sub chlky, calc xln fill, mstly dns hrd

shl blk carb, swy grys blkly pcs, shl gry lt gry green silty calc, blkly ang pcs, lst tan crm lt gry f vf xln blkly dns hrd ang

shl gry lt gry silty calc, lst tan lt gry/brn f vf xln dns hrd blkly ang tr micro foss, mstly dns arg

lst tan gry brn f vf xln dns hrd blkly, arg in prt, gran sub chlky in prt, tr micro foss





4750
4800
4850
4900



lst tan gry vf xln dns hrd blk ang hrd, shl gry lt med gry tr brn silty calc, foss clasts

shl gry, gry/blue/green, blk, ratty, splinters, soft, mush

shl gry, gry/green/blue, tr vari color, ratty soft, tr sndy gritty, shl blk carb

shls, blue gry green maroon yllw, vari color, ratty silty splints, chrt wht yllw orange shrp frsh opa

chrt lt gry, tan, smokey, shrp, frsh, opa semi transl, foss, frac por, tr trip text/edge, pp/moldic por, vsli odor, gas bubs, SSFO, blk dead flky stain, spls 90% frsh chrt

chrt wht, tan lt gry, smokey in prt, shrp frsh opa/semi trans, frac por, fair trip text, pp/moldic por, spotted stain, fair gas bubs, SFO, fair/gd odor, blk dead stain, incr odor, show, vis por w/depth

chrt wht tan lt brn in prt, shrp frsh opa, incr weath/trip text edge, gd pp/moldic por, incr odor, SFO/gas bubs, filmy RBSFO stain with depth, less blk flky stain

chrt wht, wht lt brn mott, frsh shrp opa w/gd weath/trip text edge, gd vis pp/moldic por, gd odor, gd lt brn/brn stain, filmy SFO, SFO gas bubs w/brkn,

dolo, lst in prt crm lt tan f vf xln dns hrd gran, sndy text, tr frnly suc text, tr chrt, chrt blue/gry smokey with dolo edge aa, brn stain, vssfo/brkn, tr gas bub, odor?

dolo crm lt tan/gry f vf lxn gran, sndy text, blk dns hrd, chrt in prt, lt gry smokey chrt inclu, chrt w/crm tan dolo edge, tr sli stain on dolo/chrt contact, nodor, tr gas bubs

dolo tr lst in prt, tan lt gry bec lt gry f vf xln dns hrd blk ang tr silic text chrt in prt, chrt gry smokey shrp frsh, dolo edge tr drk stain, nsfo, nodor

dolo tan lt gr f vf xln dns hrd silty, tr silic text, chrt tl gry/gry smokey shrp frsh foss opa

dolo tan lt gry f vf xln dns blk hrd silty, tr silic text, tr glau, chrt, chrt gry smokey shrp frsh foss

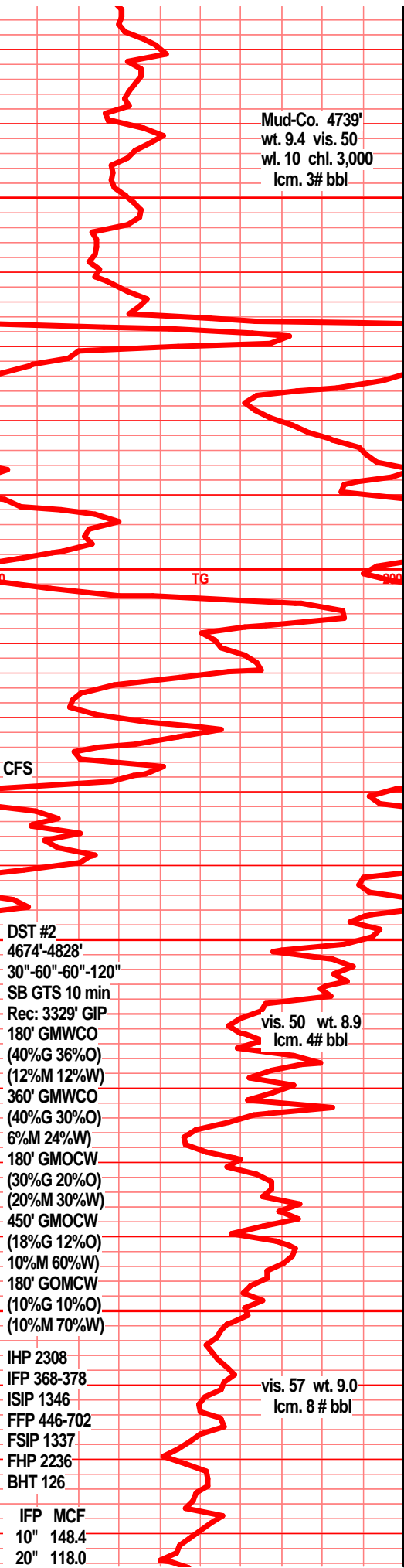
dolo tan lt gry vf xln blk dns hrd, arg, silty, tr silic text, chrt, chrt gr smokey shrp frsh foss

dolo silty dolo lt gry gry vf xln dns gran silty gritty, chrt gry smokey shrp frsh

dolo lt gry gry vf xln silty gritty arg, blk ang pcs, chrt gry drk gry smokey shrp frsh foss

dolo gry drk gry vf xln silty gritty arg, tr silic text, blk dns ang pcs, chrt gry smokey shrp

dolo silty dolo, gry drk gry silty dns hrd arg, tr



Mud-Co. 4739'
wt. 9.4 vis. 50
wl. 10 chl. 3,000
lcm. 3# bbl

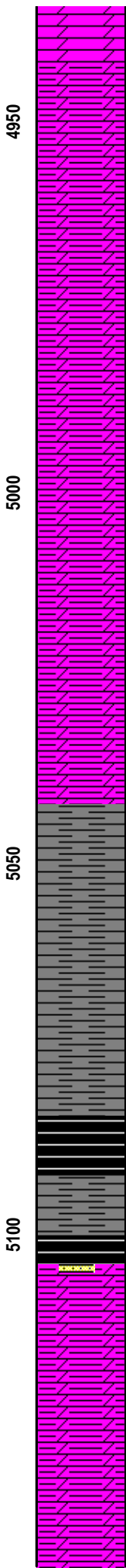
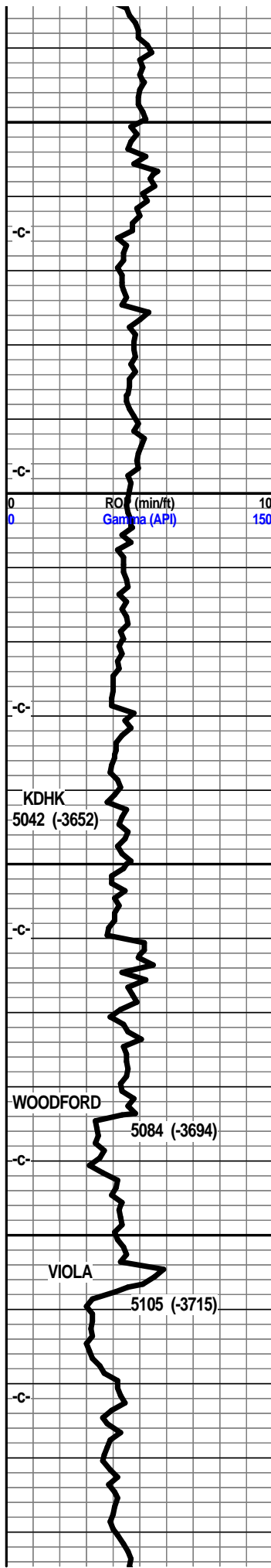
DST #2
4674'-4828'
30"-60"-60"-120"
SB GTS 10 min
Rec: 3329' GIP
180' GMWCO
(40%G 36%O)
(12%M 12%W)
360' GMWCO
(40%G 30%O)
6%M 24%W)
180' GMOCW
(30%G 20%O)
(20%M 30%W)
450' GMOCW
(18%G 12%O)
10%M 60%W)
180' GOMCW
(10%G 10%O)
(10%M 70%W)

vis. 50 wt. 8.9
lcm. 4# bbl

vis. 57 wt. 9.0
lcm. 8 # bbl

IHP 2308
IFP 368-378
ISIP 1346
FFP 446-702
FSIP 1337
FHP 2236
BHT 126

IFP MCF
10" 148.4
20" 118.0



silic text, chrt aa

dolo gry med drk gru vf xln dns hrd blk arg
 silty, gritty, tr silic text, chrt gry smokey shrp
 foss

dolo silty shly dolo, gry drk gry dns hrd blk pcs,
 shl drk gry silic silty gritty

dolo silty dolo, gry drk gry silty gritty, tr silic
 text, bky ang dns pcs, shl drk gry silty silic

dolo silty dolo, dry drk gry, blk dns ang pcs, vf
 xln gritty, tr sili silic in prt, shl gry drk gry silty
 gritty

dolo silty dolo, vf xln dns hrd silic text, gritty
 silty shly, shl drk gry silty gritty

dolo gry med drk gry vf xln dns hrd silty gritty
 arg, shl drk gry silty gritty

dolo gry med/drk gry vf xln silty dns hrd gritty,
 arg, silic text in prt, tr chrt gry med gry shrp
 opa, shl gry drk gry blk

dolo shly dolo, gry drk gry silt gritty arg shl gry
 drk gry silic text

dolo, shly dolo, drk gry med drk gry silty gritty
 arg,

dolo silty dolo aa, shl gry lt gry green silty gritty

shl gry med gry green silty soft

shl gry med gry silty soft

shl gry med gry, gry brn grn, silty soft flky pcs

shl gry dkr gry, gry/brn, silty, bedded, gas bubs

shl gry, gry brn, silty, tr gritty, bedded, pyritic
 inprt, gas bubs

shl drk gry brn, drk reddish brn, blk carb, abun
 gas bubs

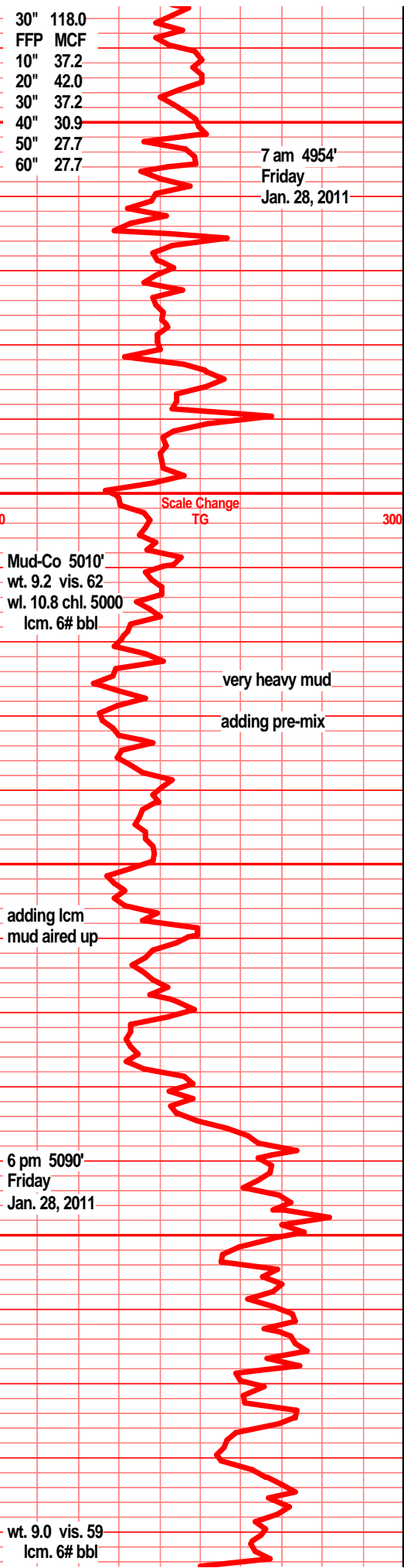
shl drk brn/maroon, blk, gritty, gran,
 carb/organic, abun gas bubs. blk ang pcs,

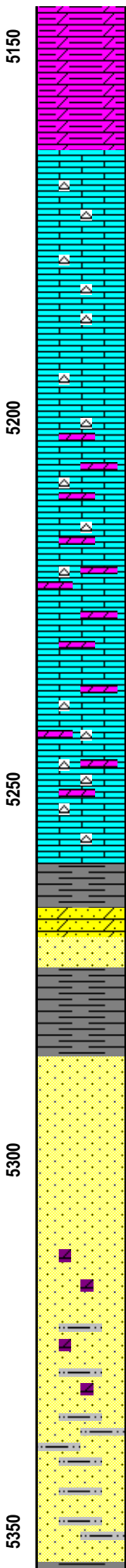
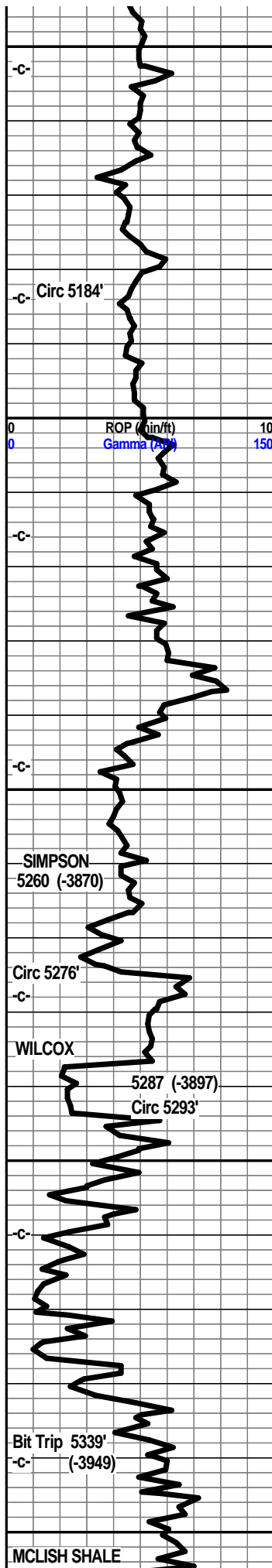
sst, 2-3 clstrs, clr vit grns, ang med/crs grns, prly
 srtd, v/well cem, pyritic, arg, clay fill, mineral fill,
 blk ang dns clstrs NS, dolo shly dolo, tan lt brn
 gry vf xln gran gritty silty, gas bubs

dolo, silty shly dolo, tan gry vf xln gritty gran,
 arg, gas bubs, tr lst wht f xln gran soft arg chiky
 pyritic

dolo shly silty dolo, gry tan mott vf xln gran blk
 ang pcs, lst wht lt gry/wht soft mushy chiky
 gran. spls wsh wht

dolo, silty shly dolo, tan, tan gry mott vf xln blk





ang gran arg soft, lst wht gry wht soft mushy
spls wsh wht

dolo silty shly dolo, tan gry mott, vf grnd gran
soft gritty arg,

lst wht lt gry mott, f sli med xln, blk ang, flky tr
sub chlky, tr foss frags, chrt wht opa q shrp frsh

lst wht off wht lt gry, lt gry tint, f sli med xln blk
ang pcs, tr nodular, tr sub chlky, tr foss frags,
inter xln por, tr pyritic chrt wht transl, shrp frsh
opa q

lst wht off wht lt gry tint, f sli med xln, blk flky
ang pcs, tr sub chlky, inter xln por, tr pyritic, chrt
wht, transl, opa q vit.

lst off wht/gry tint f xli med xln blk flky ang, tr
sub chlky, pyritic, inter xln text, dolo tan lt brn vf
xln dns hrd blk chrt, chrt dull tan shrp frsh
foss

lst off wht lt gry f med xln blk flky sub chlky tr
foss pyritic, dolo tan lt gry vf xln dns hrd blk
silic text, chrt dull tan shrp frsh blk

lst, dolo in prt, tan lt brn dull tan f vf xln dns hrd
blk, silic text in prt, pyritic, tr foss, chrt, chrt
dull tan gry shrp frsh foss

lst dolo in prt tan lt gry lt brn vf xln dns hrd blk,
silic text, chrt, chrt dull tan gry shrp frsh foss
opa q

chrt tan brn frsh shrp foss opa q, dolo, lst in prt
tan gry brn vf xln dns hrd blk ang dns chrt

lst tan brn f vf xln dns hrd blk ang tr foss, dolo
in prt, tr silic text, chrt, much chrt dull brn opa q
shrp frsh foss

shl drk gry, teal green, slick, snd grn inclu, sst
wht/clr, gry green tint clstrs, f grnd sub ang,
w/srtd, sub fria to tite, dolo in prt, pyritic NS

shl gry drk gry, green teal green, sndy gritty, snd
grn inclu,

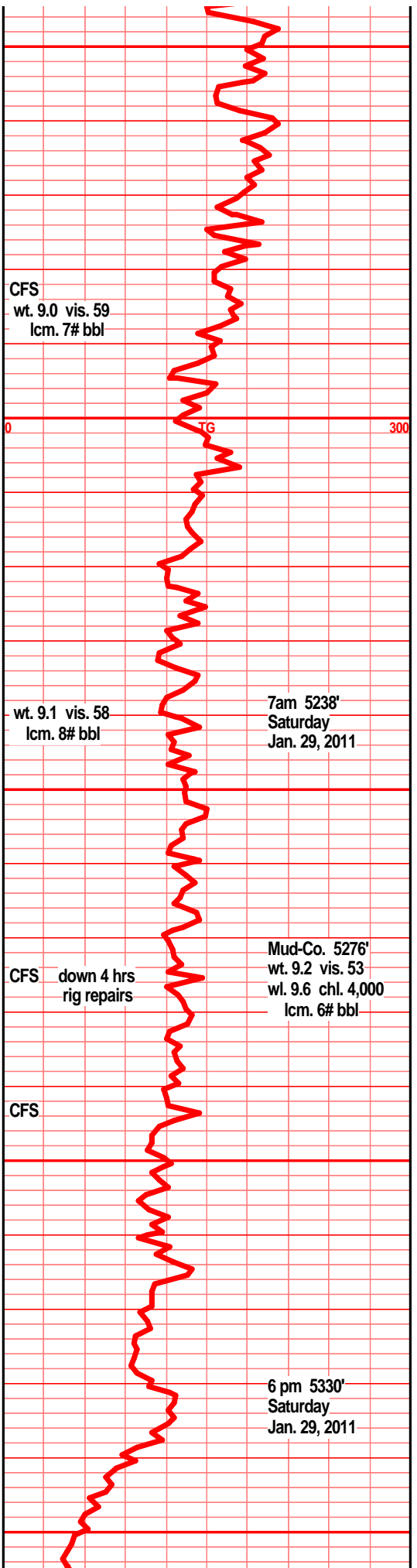
sst clr semi frstd grns, sub rded, w/srtd, sub fria
to fria, fair/prly cem, silic cem, tr inter grn dolo
fill, min fill, fair/gd inter grn por, tr dead blk flky
stain, nodor, NSFO

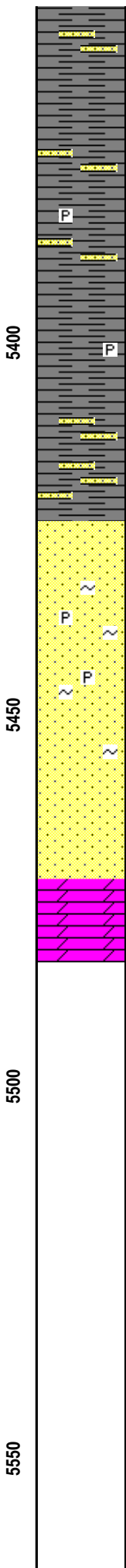
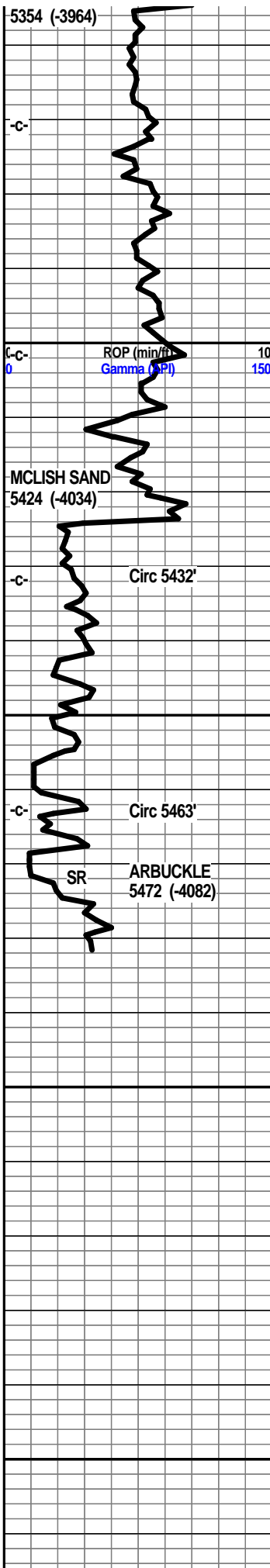
sst clr lt grns/clstrs, f grnd, sub rded tr sub ang,
w/srtd, prly tr w/cem silic cem, sub fria, tr tite,
dolo xln fill around grns in prt, min fill, tr pyritic,
tr clay fill, tr hvy grsy dead stn, NSFO/odor

sst wht clr tr semi frsted grns, sub ang/rded, fn
grnd, w/srtd, sub fria to tite, silic cem, p/semi
well cem, min fill, tr dead hvy stain, tr gas bub?
NSFO/odor

sst clr lt tan clstrs, f grnd dolo in prt, sub ang/
sub rded, w/srtd. sub fria and tite blk clstrs,
w/cem, silic cem, dolo face/grns, min fill, clay fill,
shl gry teal green, snd grn inclu

shl gry dkr gry, gry/green, pyritic, sst tan clstrs,
fn grnd, sub ang/rded, w/srtd, w/cem calc/silic
cem, dolo in most, sub fria to tite, min fill, glau
fill





shl blue-gry-green, teal green

shl green teal green, slick wxy grsy tr snd grn inclu

shl green, teal green, slick, wxy, grsy, tr snd grn inclu, tr pyritic, snd grns/glau

shl green, teal green, wxy, grsy, snd grn inclu, pyritic, snd grns/glau

shl green, teal green, grsy, wxy, pyritic

sh gry/green, teal green silty slick, sst gry green f grnd sub ang, hvy clay fill, glau/min fill

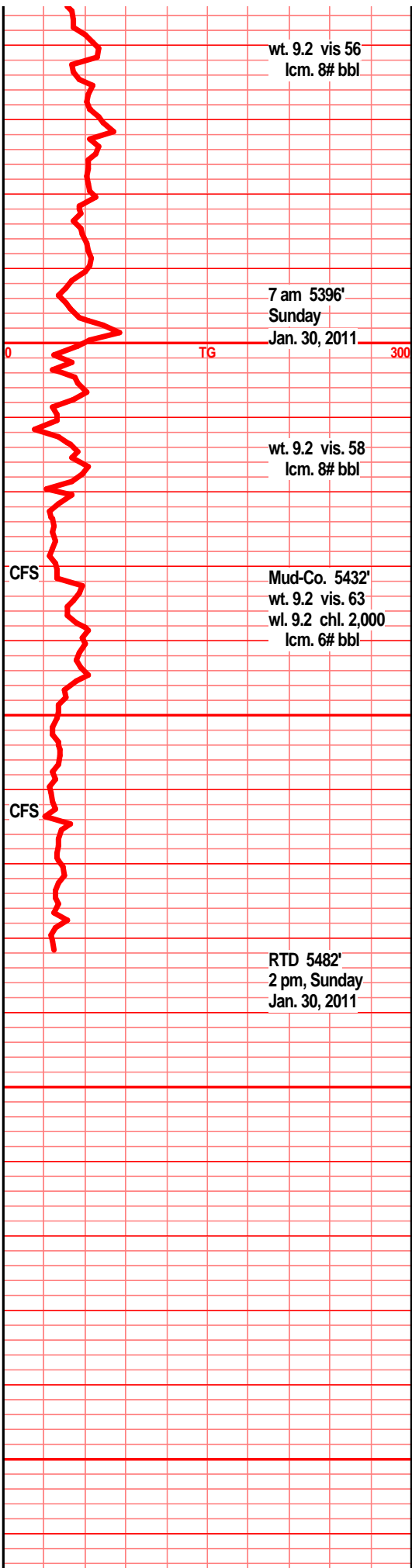
sst clr tan, drk tan clstrs, f grnd sub rded, prly srted, w/cem, sub fria, silic cem, dolo in prt, tr clay fill, min fill glau, sst lt gry vf grnd, quartzitic text, blkly ang hrd dns clstrs, min fill, glau, NS

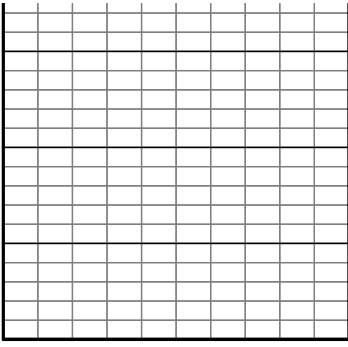
sst wht tan tr gry clstrs f grnd, sub rded, prly srted, sub fria, w/cem, silic cem, dolo in prt, min fill, tr glau, qrtz in prt, blkly ang dns hrd clstrs, pyritic

sst clr mstly lt gry gry clstrs, f grnd, sub rded, prly srted, f/w cem, silic cem, sub fria, mstly tite dns, dolo in prt, min fill, clay fill, arg in prt

sst lt gry clstrs f grnd, sub rded, w/prly srted, w/cem, silic cem, non fria, mstly dns hrd blkly ang clstrs,

dolo tan lt brn f vf xln blkly ang hrd pcs, silic text, tr suc in prt, tr small rhom xln text, inter xln por, gran tr foss, dolo lt gry f vf xln dns hrd blkly, silic text,





00

