



**Woolsey Operating Company, LLC**

Scale 1:240 (5"=100') Imperial

Measured Depth Log

Well Name: Platt GU #2

Location: S/2 SW NW SE

License Number: API: 15-007-23633-00-00

Spud Date: January 19, 2011

Region: Barber County, Kansas

Drilling Completed: February 2, 2011

Surface Coordinates: 1395' FSL, 2310' FEL Section 10-Twp 35 South - Rge 12 West  
Hartner

Bottom Hole Coordinates: Vertical Hole

Ground Elevation (ft): 1384

K.B. Elevation (ft): 1393

Logged Interval (ft): 4300 To: 5485 Total Depth (ft): 5485

Formation: McLish Shale

Type of Drilling Fluid: Chemical Mud, Displace at 3400'

Printed by WellSight Log Viewer from WellSight Systems 1-800-447-1534 [www.WellSight.com](http://www.WellSight.com)

**OPERATOR**

Company: Woolsey Operating Company, LLC

Address: 125 N. Market, Suite 1000  
Wichita, KS 67202

**GEOLOGIST**

Name: W. Scott Alberg

Company: Alberg Petroleum, LLC

Address: 609 Meadowlark Lane  
Pratt, Kansas 67124

**FORMATION TOPS**

	<b>SAMPLE TOPS</b>	<b>LOG TOPS</b>
HUSHPUCKNEY SHALE	4576(-3183)	4576(-3183)
B/KC	4624(-3231)	4624(-3231)
PAWNEE	4726(-3333)	4728(-3335)
CHEROKEE GROUP	4772(-3379)	4774(-3381)
CHEROKEE SAND	4798(-3405)	4802(-3409)
MISSISSIPPIAN	4821(-3428)	4832(-3439)
KINDERHOOK SHALE	5103(-3710)	5104(-3711)
WOODFORD SHALE	5182(-3789)	5183(-3862)
MISNER SAND	5205(-3812)	5205(-3812)
VIOLA	5234(-3841)	5233(-3840)
SIMPSON WILCOX	5372(-3979)	5373(-3980)
MCLISH SHALE	5453(-4060)	5454(-4061)
MCLISH SAND	NDE	NDE
RTD	5485(-4092)	
LTD		5486(-4093)

**COMMENTS**

**Surface Casing: Set 5 joints 10 3/4" at 212' with 230 sxs Class A, 2% gel, 3% cc, plug down at 10:15 pm on January 19, 2011. Cement did Circulate.**

**Intermediate String: Ran 24 joints 8 5/8", 23#, set at 965' with 100 sx Class A, 3% cc, 2% gel by Allied, plug down at 5:30 am on January 22, 2011.**

**Production Casing: 5 1/2" Production Casing Ran.**

**Deviation Surveys: 215' 1 1/2, 1252' 3/4, 1760' 3/4, 2287' 3/4, 2870' 1, 3568' 3/4, 3854' 1 1/4, 3949' 1 1/4, 4076' 1, 4203' 1/4, 4710' 3/4,**

**Contractor Bit Record: 1- 14 3/4" out at 224'.  
2- 7 7/8" out at 5485'.**

**Gas Detector: Woolsey Operating Company, Trailer #2**

**Mud System: Mud Co, Brad Bortz, Engineer**

**DSTs: One by Superior Testers**

**Logged By Superior Well Services, Inc**

**LTD 5486'**

## DSTs

DST #1 4742 to 4900'

Times 30-60- tool malfunction, trip out of hole

Slid to bottom 5', had to pull back up and add another joint of pipe.

Recovery: Strong Blow, BOB 1 min, GTS 10 min, TSTM,

IHP 2425# FHP 2543#

IFP 257-554# plugging FFP NA

ISIP 1798# FSIP NA

180' Gassy drilling Mud

180' GWCM (80% m, 20% w)

180' GWCM (80% m, 20% w)

180' GWCM (85% m, 15% w)

240' dry pipe

240' Gassy Mud

Chlorides 54,000 ppm

Note-- Tool malfunctioned and came unscrewed and had to fish out of hole.

## CREWS

H2 Drilling Rig #3


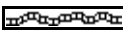
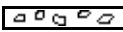
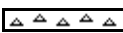


Tool Pusher - Randy Smith







Drillers - Mark Staats


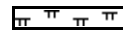
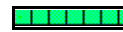
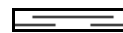


Gary Axtell






Martin Tinoco

## ROCK TYPES

 Anhy  
 Bent  
 Brec  
 Cht  
 Clyst  
 Coal

 Congl  
 Sdy dolo  
 Shy dolo  
 Dol  
 Gyp  
 Sdy lmst

 Lmst  
 Mrlst  
 Salt  
 Shale  
 Slstst  
 Ss

 Black sh  
 Gry sh  
 Shale  
 Shyslstst  
 Sltysh

## ACCESSORIES

### MINERAL

- Anhy
- Arg
- Bent
- Bit
- Brecfrag
- Calc
- Carb
- Chtdk
- Chtlt
- Dol
- Ferrpel
- Ferr
- Glau
- Gyp
- Marl
- Nodule
- Phos
- Pyr
- Salt
- Sandy
- Silt

- Chlorite
- Dol
- Sand
- Slty

### FOSSIL

- Algae
- Amph
- Belm
- Bioclst
- Brach
- Bryozoa
- Cephal
- Coral
- Crin
- Echin
- Fish
- Foram
- Fossil
- Gastro
- Oolite
- Ostra

- Pelec
- Pellet
- Pisolite
- Plant
- Strom
- Fuss
- Oomoldic

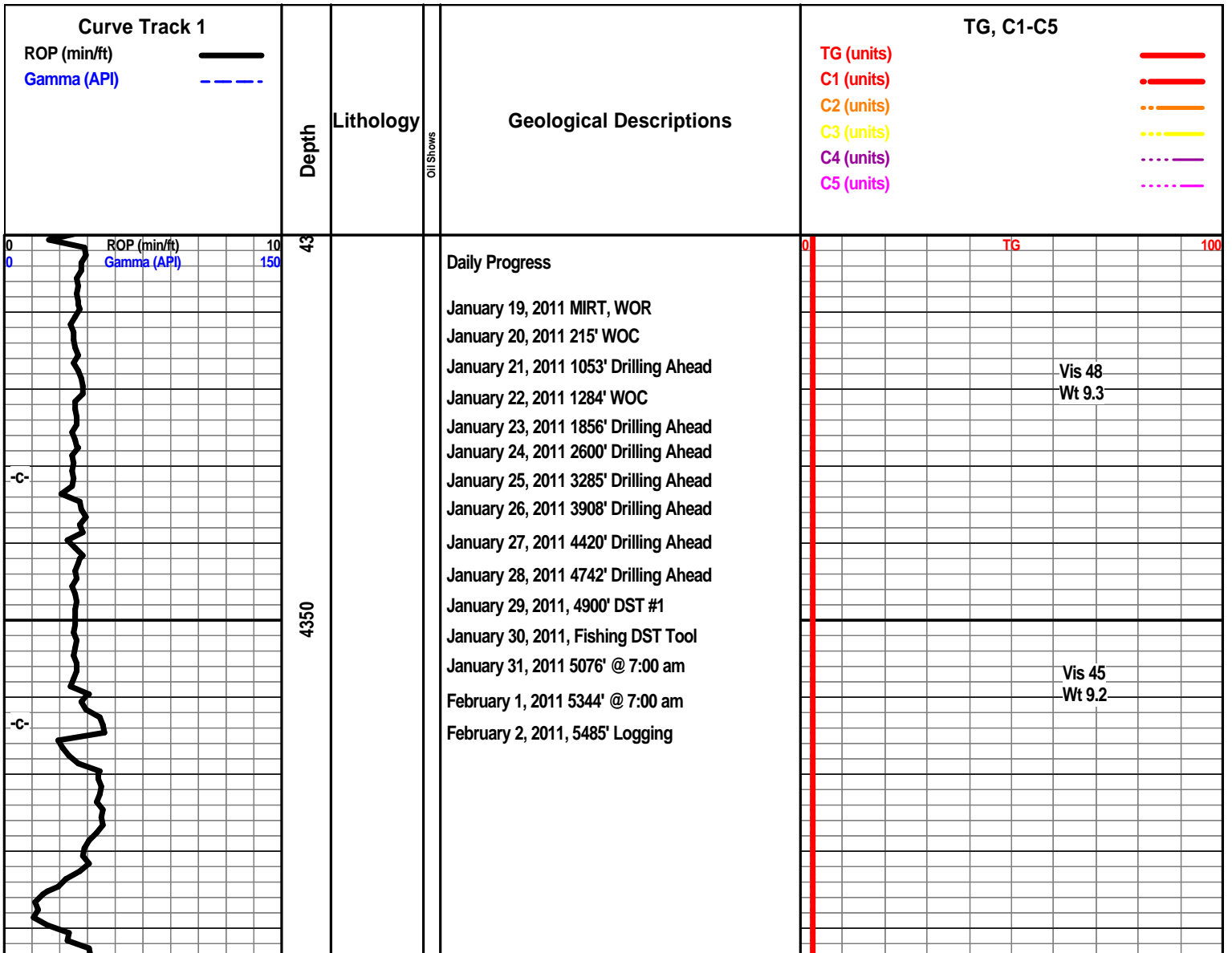
### STRINGER

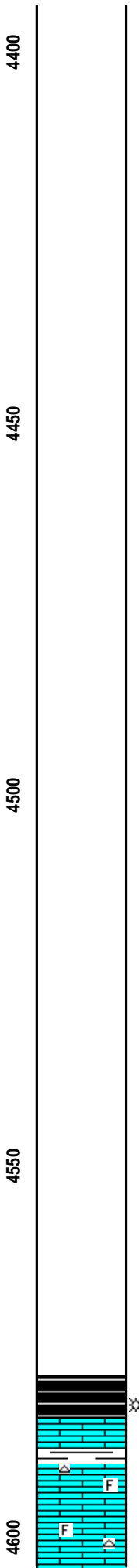
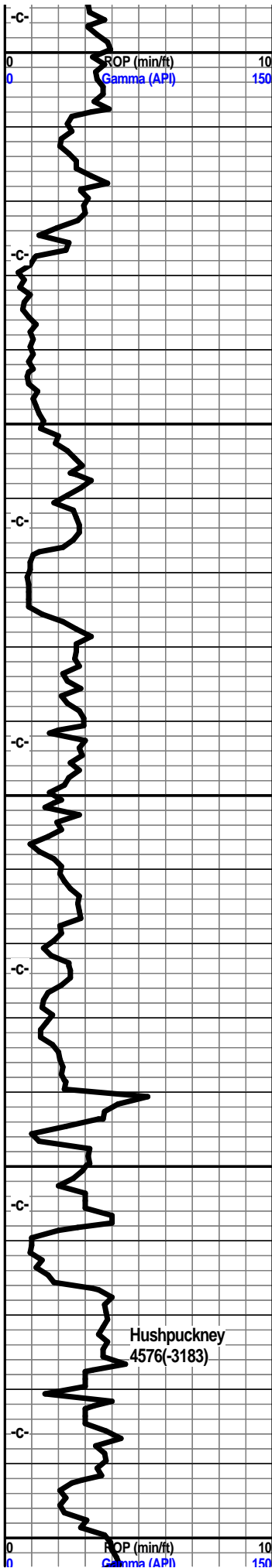
- Anhy
- Arg
- Bent
- Coal
- Dol
- Gyp
- Ls
- Mrst
- Slststrg
- Ssstrg
- Carbsh
- Clystn
- Dol

- Grysh
- Gryslt
- Lms
- Sandylms
- Sh
- Slststn

### TEXTURE

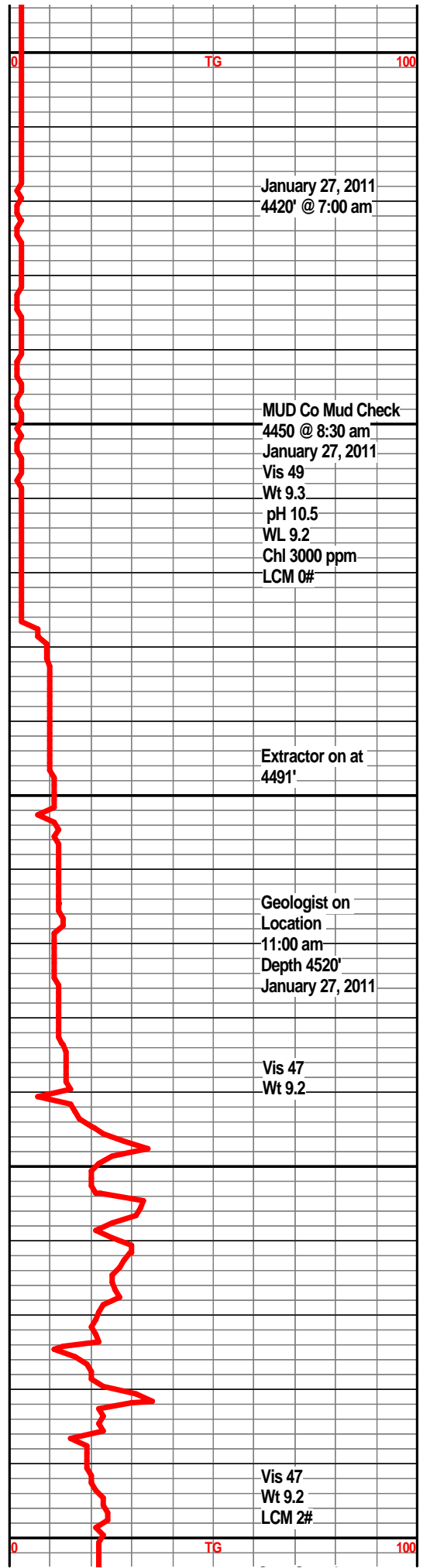
- Boundst
- Chalky
- Cryxln
- Earthy
- Finexln
- Grainst
- Lithogr
- Microxln
- Mudst
- Packst
- Wackest





Shale, grey-black, slightly carb.

Ls tan-white, tan-brown, mxln, foss., in part, sub-chalky in part, traces of grey-white chert.



January 27, 2011  
4420' @ 7:00 am

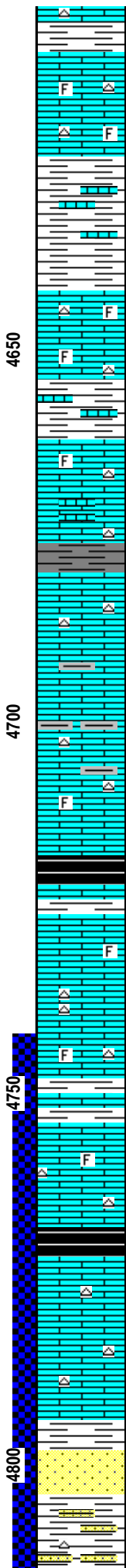
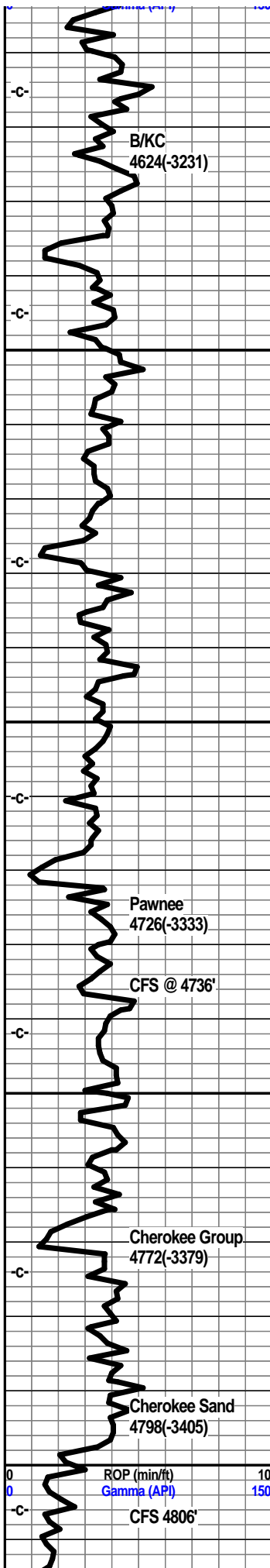
MUD Co Mud Check  
4450 @ 8:30 am  
January 27, 2011  
Vis 49  
Wt 9.3  
pH 10.5  
WL 9.2  
Chl 3000 ppm  
LCM 0#

Extractor on at  
4491'

Geologist on  
Location  
11:00 am  
Depth 4520'  
January 27, 2011

Vis 47  
Wt 9.2

Vis 47  
Wt 9.2  
LCM 2#



Shale, Light grey.

Limestone, cream to tan-bwn, mxln, foss. in part, trace foss. porosity, traces of tan chert.

Shale, light grey green, calcitic w/ ls stringers.

Limestone, tan, cream, fxln, trace foss., cherty.

Shale, light to dark grey, pale grey-green, calcitic, ls stringers.

Limestone, cream to tan, xln, sl foss, traces of tan cherts.

Shale, dk grey, trace black.

Limestone, cream to tan, off-white, fmxln, sub-chalky, trace tan to off-white chert.

Limestone, cream to tan, mxln, foss. in part, sub-chalky, traces of tan chert, few shale stringers.

Shale, grey-black, carb.

Limestone, cream to tan, fxln, trace interxln porosity, slightly foss, sub-chalky in part, traces of tan-white chert, no odor, dull min fluor.

Shale, dk grey.

Limestone, tan-white, cream, xln, foss in part, sub-chalky, traces of chert.

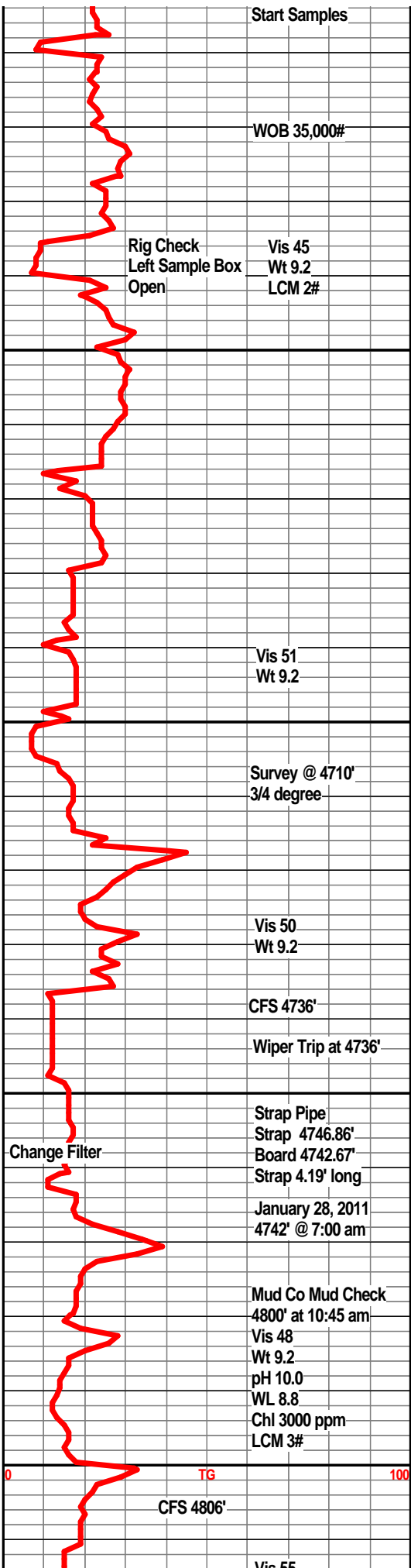
Shale, grey-black, carb.

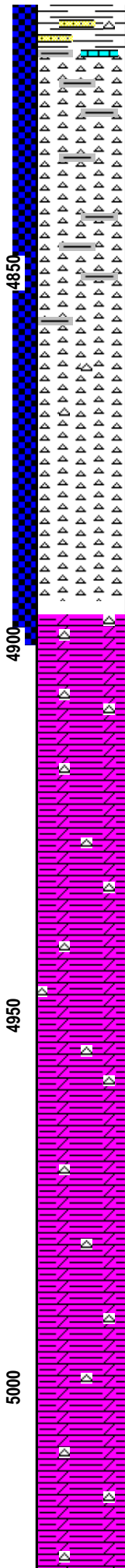
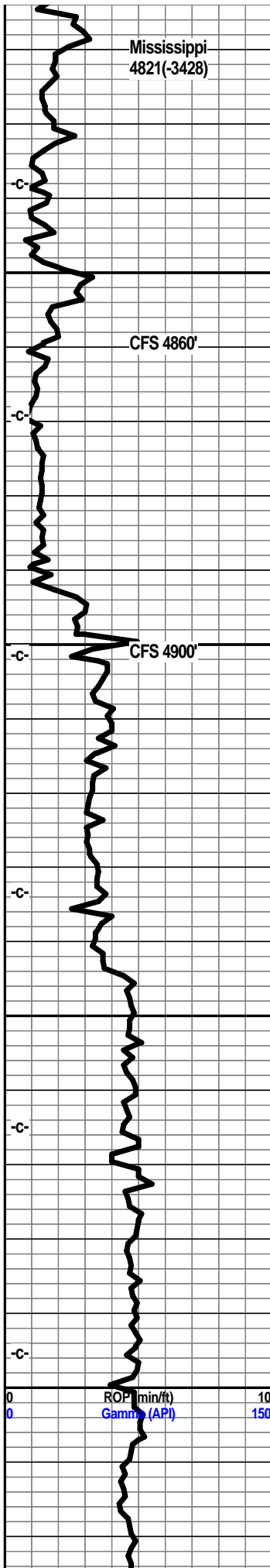
Limestone, cream, off-white, tan, xln, trace xln porosity, sub-chlaky, traces of tan chert.

Shale, dark grey, some green.

Sst, tan, tan-brown, very fine grained, sub angular, well cemented, some friable, slight show of bleeding gas, very faint show of oil, very dull fluor., faint fleeting odor.

Shale. arev. aren. some soft red. abundant fn





grained off-white sand clusters with slight staining. some stringers of sand, stringer of ls.

Chert, white to off-white, sharp, some weathered edges, slight lt bwn stain on edges, shaley in part, very ft flour, slight to faint odor. Samples have abundant shales, conglomerate type material from above.

Chert, white to off-white, some sharp, fresh, some with large amount of weathering with a pin point porosity, show of bleeding oil, some free oil in tray, bleeding gas, fair odor, dull flour.

Chert, tan to off-white, sharp, weathered, w/ pin point porosity, lt bwn staining, some asphaltic staining, fair odor, show of free oil, bleeding gas & oil from some samples, dull flour.

Chert, off-white to tan, some sharp, mostly weathered w/ pin point porosity, very few scattered small vugs, some good fracturing with light brown staining, some asphaltic stain, fair odor, free oil, bleeding oil and gas, dull flour.

Chert, a/a continued very good shows of oil and gas, good pin point porosity, very weathered.

Dolo, light grey, cherty, traces of grey-green shales.

Dolo, Light grey-white, xln, slightly silty, grey-green shale, some off-white sharp cherts, w/ weathering, light bwn staining.

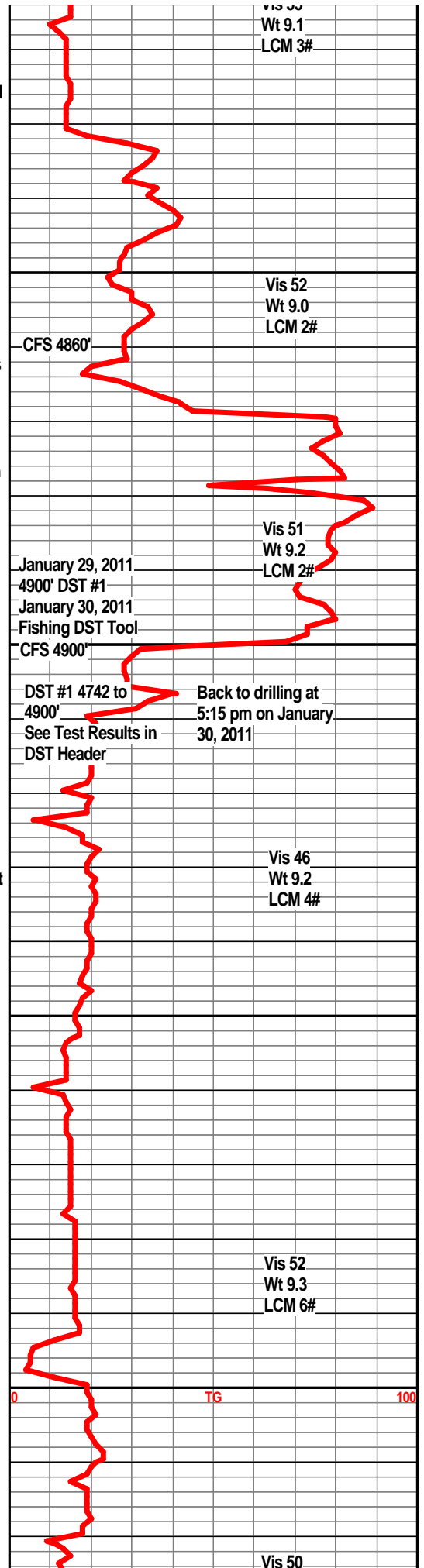
Dolo., off-white, light grey, xln, silty texture, light grey-green shales, traces of chert, sharp, weathering present w/ light staining.

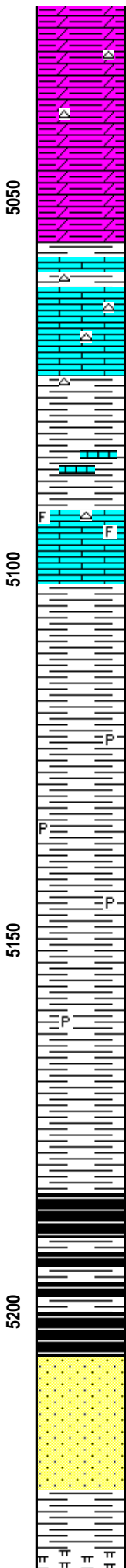
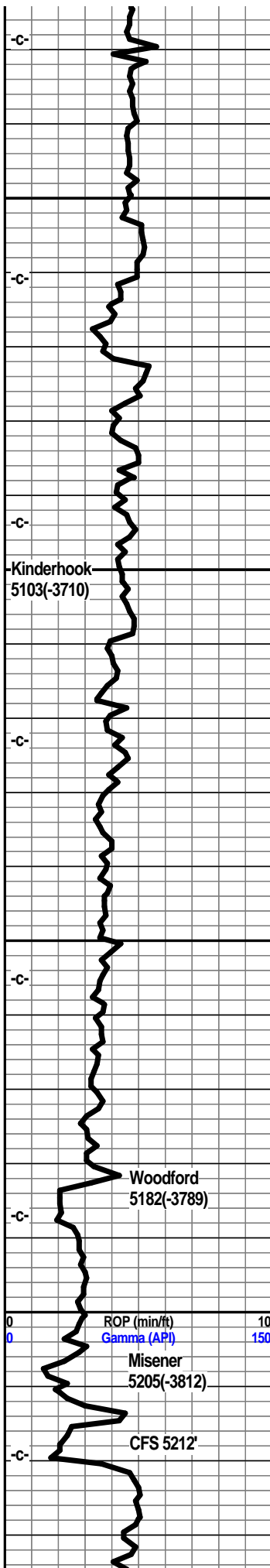
Dolo, off-white, grey, fn xln, silty texture, some blocky grey shales.

Dolo., grey-white, fn xln, some scattered cherts, sharp w/ trace weathering.

Dolo., grey to light grey, fn xln, traces of chert, grey-green shales.

Dolo, light grey xln, silty, grey shales, calcitic.





Dolo., light grey to grey, xln, silty in part, grey shales.

Dolo, light grey, grey, silty, grey shales.

Limestone, cream-white, fxln, subchalky, grey shales, traces of fresh cherts.

Shale, pale grey-green, soft.

Limestone, cream-white, tan, xln, sub-chalky, trace foss.

Shale, grey-black, massive, blocky, traces of pyrite.

Shale, grey, dark grey, pyritic.

Shale, grey, firm, splintery.

Shale, grey, some lighter grey, traces of pyrite.

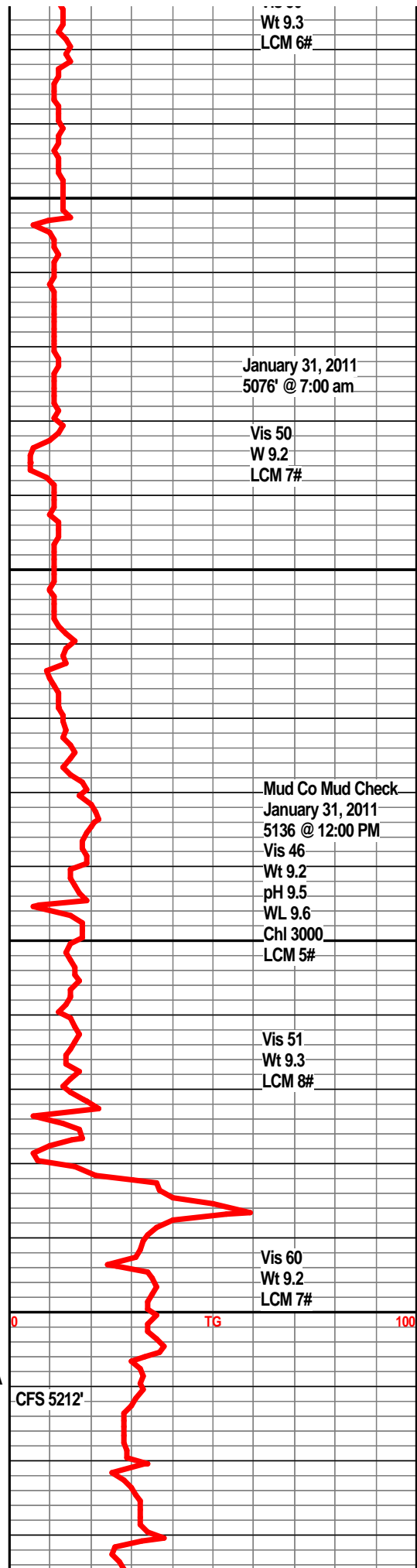
Shale, grey-black, some coffee brown, slight show gas bubbles.

Shale, grey-black, fissle, slight show gas bubbles.

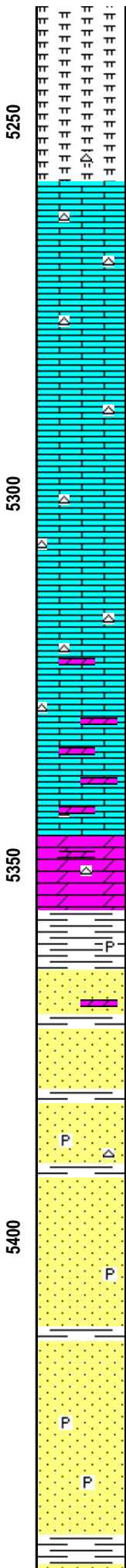
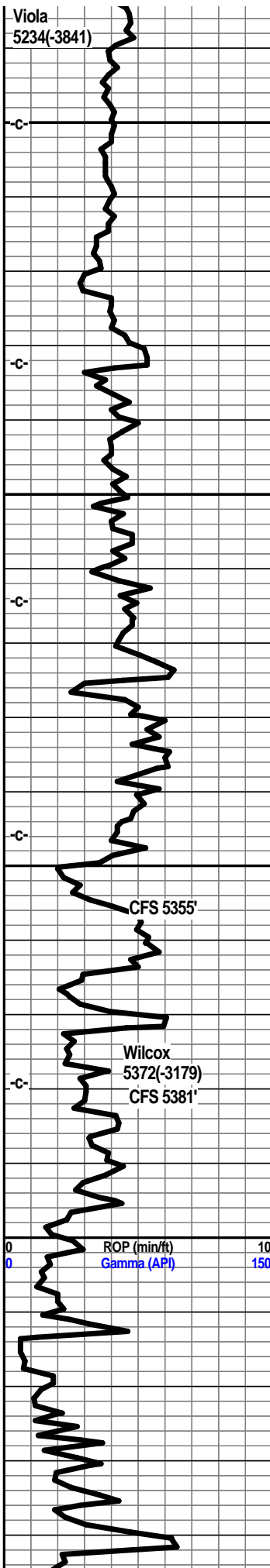
Sst, clear to white, qtz grains, well cemented, SA to SR, some gil., glauc, no fluor, no odor.

Sst, a.a, few pieces friable, most well cemented, no visible fluor, no shows.

Shale, grey-green, soft.







Dolo, soft, white, light grey, fn grained.

Dolo, light grey, soft, some ls fragments, fine grained.

Limestone, off-white, xln, chalky in part, traces of off-white cherts.

Limestone, off-white, some tan, xln, cherty in part.

Limestone, tan-white, fxln, tan cherts, sharp,

Limestone, tan-white, fxln, dense, ran cherts.

Limestone, tan-white, tan, tan sharp chert.

Limestone, tan-white, tan, xln, tan chert, sharp, some granular dolo. ls.

Limestone, tan-white, xln, succ, dolo in part, tan cherts.

Dolo, tan-brown, xln, succ, trace pin point porosity, even brown staining, faint odor, no fluor, very light show.

Shale, dark grey to green, trace pyrite.

Sandstone, clear to a grey-white, some pale green, sa to sr, med sorting, well cemented in part, gil, no odor, no visible shows,

Sandstone, clear to frosted qtz grains. some gil, sa to sr, med sorting, friable in part, some light brown stain, scattered, no fluor,

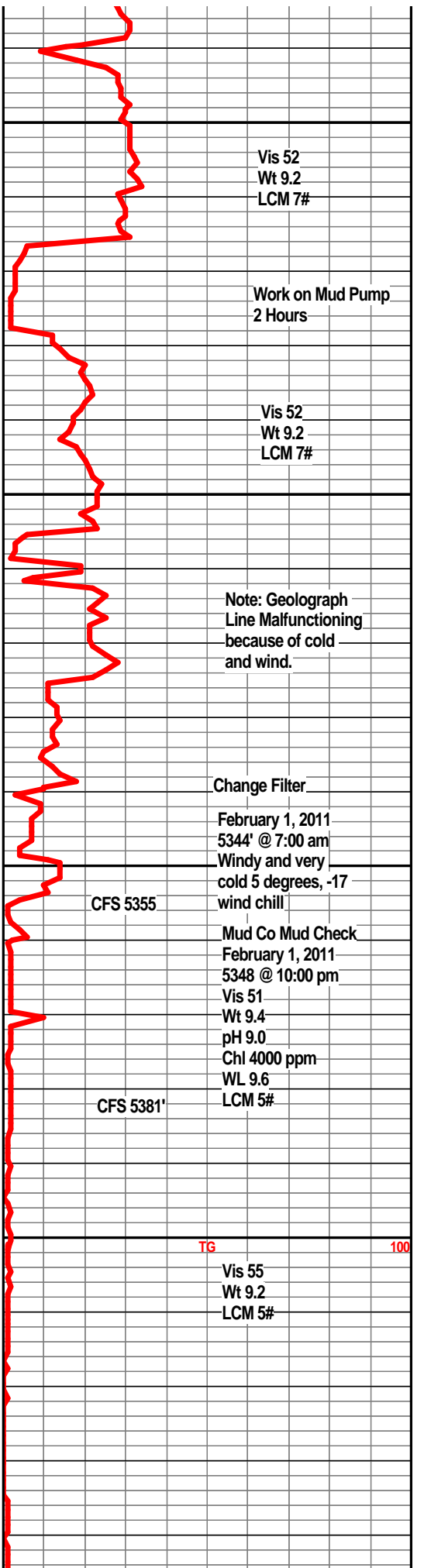
Shale, dk green, firm.

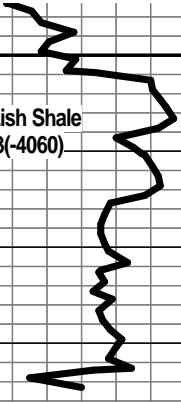
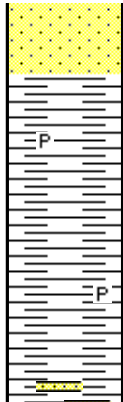
Sandstone, clear to white, frosted, qtz grains, sa to sr, friable in part, trace staining, glauc, no visible shows, some pyrite inclusions.

Sandstone, clear to frosted qtz grains, well sorted, sr to sa, friable on part, glauc, traces of pyrite, no visible shows, no odor.

SS *a/a*

Shale, green, waxey, traces of pyrite.



<p>McLish Shale 5453(-4060)</p>  <p>RTD 5485' LTD 5486'</p>	<p>5450</p> <p>5500</p> <p>50</p>		<p>Sandstone, clear to frosted white, sa to sr, well sorted, med grained, glauc, no odor, no visible shows.</p> <p>Shale, dark green, firm, waxey, traces of pyrite.</p> <p>Shale, dark green, waxey, firm. Few sandstone stringers.</p>	<p>Vis 53 Wt 9.2 LCM 7#</p> <p>RTD 5485'      February 2, 2011 5485' @ 7:00 am 2 degrees Windchill -20 Cold!!!</p>
---	-----------------------------------	--	--	--