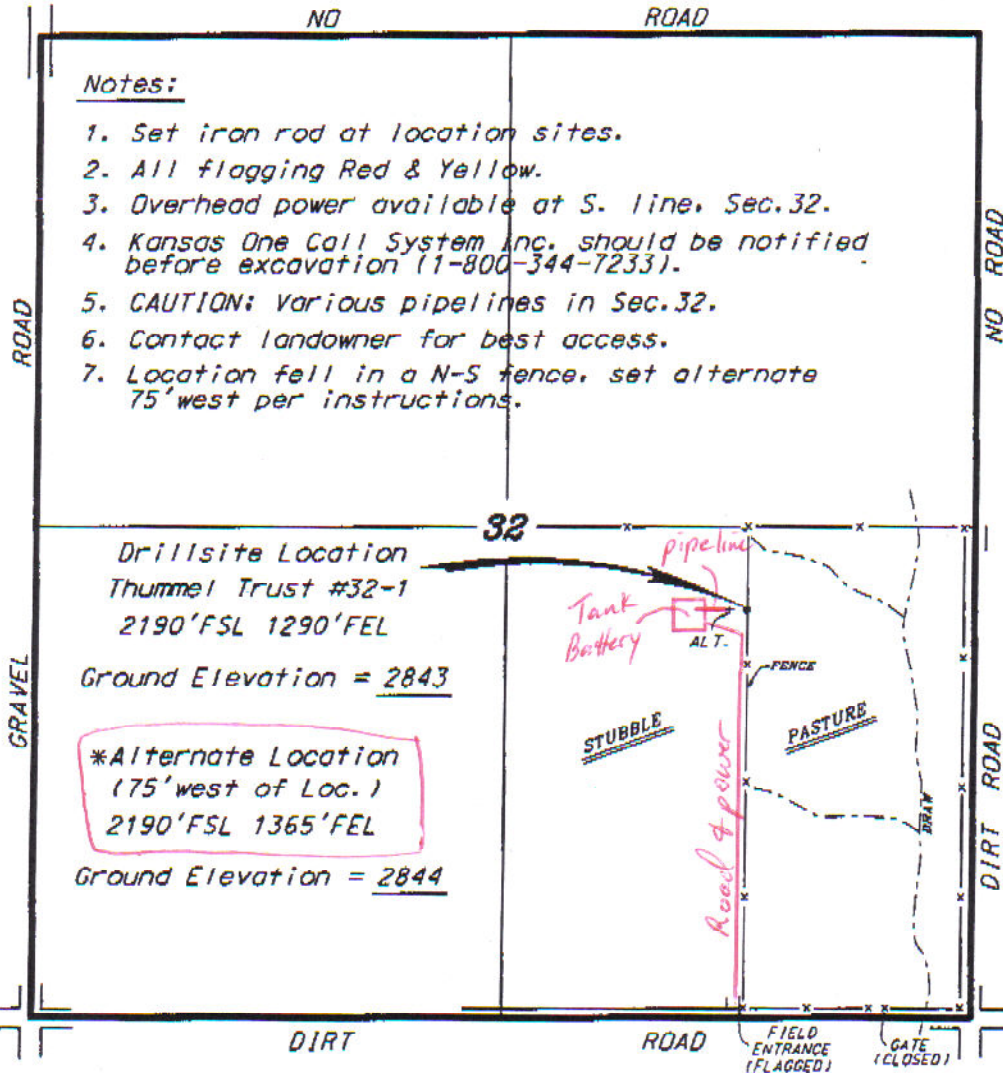


CORAL PRODUCTION CORPORATION
THUMMEL TRUST LEASE
SE.1/4, SECTION 32, T8S, R29W
SHERIDAN COUNTY, KANSAS

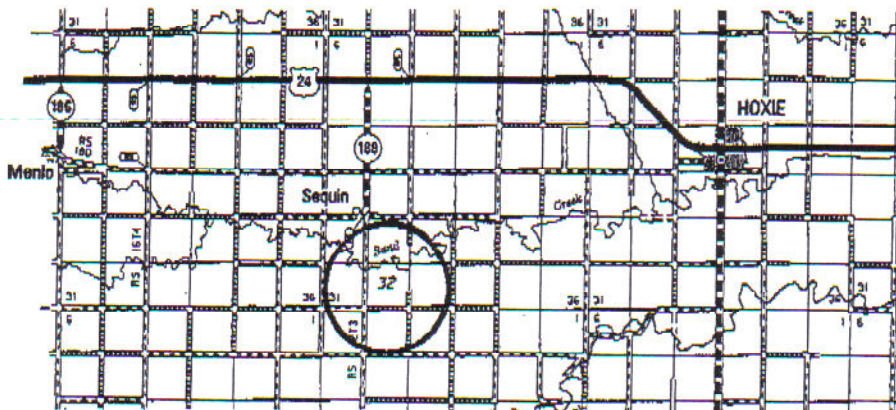
Notes:

1. Set iron rod at location sites.
2. All flogging Red & Yellow.
3. Overhead power available at S. line, Sec.32.
4. Kansas One Call System Inc. should be notified before excavation (1-800-344-7233).
5. CAUTION: Various pipelines in Sec.32.
6. Contact landowner for best access.
7. Location fell in a N-S fence, set alternate 75' west per instructions.

*Ingress and egress to location as shown on this plat is per usage only and may not be legally opened for public use. Contact landowner, tenant and county road department for access.



SCALE 1" = 1000'



* Controlling data is based upon the best maps and photographs available to us and upon a regular section of land containing 640 acres.
 * Approximate section lines were determined using the normal standard of care of oilfield surveyors practicing in the state of Kansas. The section corners, which establish the precise section lines, were not necessarily located, and the exact location of the drillsite location in the section is not guaranteed. Therefore, the contractor securing this service and occupying this plat and all other parties relying thereon agree to hold Central Kansas Oilfield Services, Inc., its officers and employees harmless from all losses, costs and expenses and said entities released from any liability from incidental or consequential damages.
 * Elevations derived from National Geodetic Vertical Datum.

May 10, 2011