

Customer: Pioneer Oil Company, Inc. Lease No.: [] Date: 12-11-10
 Lease: Peace Creek Unit Well # 10-3
 Field Order # 3121 Station: Pratt, Kansas Casing: 5 1/2" 15.5 lb Depth: 3,715 ft County: Reno State: Kansas
 Type Job: C.N.W. - Longstring Formation: [] Legal Description: 3-235-10W

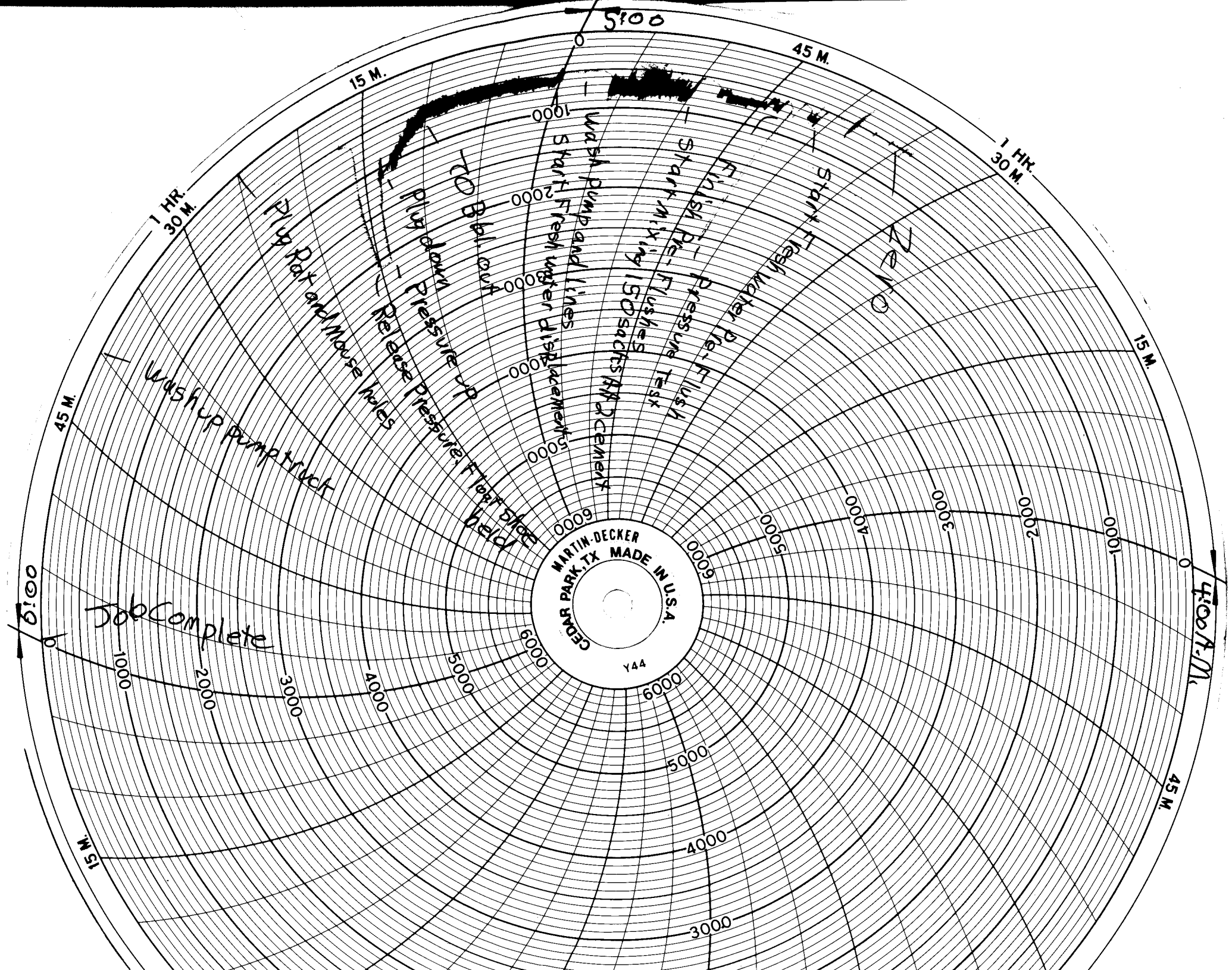
PIPE DATA		PERFORATING DATA		MATERIALS USED		TREATMENT RESUME	
Casing Size: 5 1/2"	Tubing Size: 5" LB/FT	Shots/Ft: 150	sacs: 150	AA-2 with .258 Defoamer	RATE: 5.8	PRESS: 322	ISIP: 108 Salt
Depth: 3,715 Feet	Depth: []	From: []	To: 18 Gas	Block, .25 Lb/st. Cellflake	Max: []	Min: 5	10 Min.
Volume: 88.4 Bbl	Volume: []	From: []	To: 5.3 Lb/Gal, 5.74 Gal/s	Min: []	Avg: 1.3	TCU: FT/st.	10 Min.
Max Press: 1,600 P.S.I.	Max Press: []	From: []	To: []	HHP Used: []	Annulus Pressure: []	Total Load: []	[]
Well Connection: Plug Container	Annulus Vol. []	From: 50	To: 60	40 Poztoplug Rat (30 sacs) and Mouse (20 sacs)	Notes: []	[]	[]
Plug Depth: 3,695 Feet	Packer Depth: []	From: []	To: []	Flush: 88 Bbl Fresh Water	[]	[]	[]

Customer Representative: David Stahl Station Manager: David Scott Treater: Clarence R. Messich

Service Units	19,866	19,903	19,905	19,826	19,860	[]	[]	[]
Driver Names	Messich	Mattal	McBraw	[]	[]	[]	[]	[]

Time	Casing Pressure	Tubing Pressure	Bbls. Pumped	Rate	Service Log
12:30					Trucks on location and hold safety meeting.
1:00					Val Drilling start to run Auto Fill Float Shoe, Shoe Joint with Latch Down Baffle screwed into collar and a total of 88 Joints new 15.5 lb/ft 5 1/2" casing. A Turbolizer was installed on collars # 1, 3, 5, 7, 9, 11, 13, and # 15.
3:30					Casing in well. Circulate and Rotate for 1 Hour.
4:41	200			5	Start Fresh Water Pre-Flush.
	2,000				Stop pumping. Shut in well. Pressure Test. Open Well.
4:44	300		5	6	Finish Fresh Water Pre-Flush.
			20	6	Start Super Flush II.
			32	5	Start Fresh Water Spacer.
4:50	300		68	5	Start mixing 150 sacs AA-2 cement.
	-0-				Stop pumping. Shut in well. Wash pump and lines. Release Latch Down Plug. Open Well.
5:00	100			6.5	Start Fresh Water Displacement.
			70	5	Start to lift cement.
5:14	600		88		Plug down.
	1,600				Pressure up.
					Release Pressure. Float Shoe held.
	-0-		7-5	3	Plug Rat and Mouse holes.
					Wash up pump truck.
6:00					Job Complete.

Thank You, Clarence, Mike, Mike



MARTIN-DECKER
CEDAR PARK, TX. MADE IN U.S.A.
Y44

500

45 M.

15 M.

1 HR.
30 M.

1 HR.
30 M.

15 M.

45 M.

45 M.

15 M.

4:00 A.M.

6:00 P.

1 HR.
30 M.

Wash up pump truck

FINA
Release
plum down pressure
TO Ball out

Wash pump and lines
Start Fresh water displacement

150 sacks of cement

Start Mix
Flushes
Pressure

Finish
Flush
Fresh water

Start Fresh water

ZERO

Job Complete

Ticket # 3,121
Pioneer Oil Company, Inc.
Peace Creek Unit # 10-3
150 sacks AA2
Clarence R. Messick

