

Covey

The Well Watchers

Scale 1:240 (5"=100') Imperial

Well Name: **RICKE #2**
Location: **Section 5 - Township 35 South - Range 11 West**
Licence Number: **15-007-23,576 - 00-00** Region: **Barber County, KS.**
Spud Date: **16 September 2010** Drilling Completed: **26 September 2010**
Surface Coordinates: **1,005' FNL & 1,010' FEL**
(Approximately SW SW NE NE)

Bottom Hole
Coordinates:
Ground Elevation (ft): **1,369'** K.B. Elevation (ft): **1,379'**
Logged Interval (ft): **4,500'** To: **5,440'** Total Depth (ft): **5,440'**
Formation: **B / KC -----> McLish SS**
Type of Drilling Fluid: **Chemical; Low Solids (non-dispersed)**

Printed by MUD.LOG from WellSight Systems 1-800-447-1534 www.WellSight.com

OPERATOR

Company: **WOOLSEY OPERATING COMPANY, LLC**
Address: **125 North Water, Suite 1000**
Wichita, Kansas 67202
(316) 267-4379
Geologists:
Dean Pattison
Marc Summervill

GEOLOGIST

Name: **Curtis Covey**
Company: **COVEY - The Well Watchers**
Address: **6548 Bedford Circle** **wellsitegeo1@gmail.com**
Derby, Kansas 67037
Office: **(316) 776 - 0367** Cell: **(316) 217-4679**

KB: 1,379'

FORMATION TOPS

GL: 1,369'

Formation	Rotary Sample Depth (Datum)	E-log Depth (Datum)
Heebner SH	3,745' (-2,366')	3,749' (-2,370')
Toronto LS	3,769' (-2,388')	3,760' (-2,381')
Douglas Gp	3,791' (-2,412')	3,788' (-2,409')
Stark SH	4,469' (-3,090')	4,464' (-3,085')
Hushpuckney SH	4,501' (-3,122')	4,496' (-3,117')
B / KC	4,552' (-3,173')	4,546' (-6,167')
Pawnee LS	4,648' (-3,269')	4,652' (-3,273')
Cherokee Gp	4,701' (-3,322')	4,700' (-3,321')
Mississippian	4,763' (-3,384')	4,758' (-3,379')
Kinderhook Sh	5,037' (-3,658')	5,034' (-3,655')
Woodford Sh	5,079' (-3,700')	5,077' (-3,698')
Viola	5,101' (-3,722')	5,102' (-3,723')
Wilcox Sand	5,279' (-3,900')	5,277' (-3,898')
McLish Sand	5,414' (-4,035')	5,412' (-4,033')

* Plotted Drilling Time Top

RTD: 5,440' LTD: 5,437' ATD: 5,437'

Rotary sample depth is 2' - 4' low to E-logger's depth.

E-Loggers: **Superior Well Services**
Hays, Kansas

14-3/4" Hole
 16 Sept --- Spud @ 6pm. Drill to 237'.
 Run 10-3/4" casing. Set casing
 @ 234'. Cemented w/ 230 sx
 60/40 Poz (2% gel+3%CC).
 [Allied]
 Cement did circulate.
 17 --- Plug down @ 12:30pm. WOC.

7-7/8" Hole
 17 Sept --- WOC. 7am @ 237'.
 Under surface casing @
 11:45am with PDC bit.
 18 --- 7am @ 1,680'.
 19 --- Bit Trip @ 2,356'. Resumed
 Drilling with Tri-Cone Bit.
 7am @ 2,435'.
 20 --- 7am @ 3,183'.
 21 --- Displace mud @ 3,419'.
 7am @ 3,850'.
 22 --- 7am @ 4,401'.
 23 --- 7am @ 4,719'.
 Start and

7-7/8" Hole
 24 Sept --- Finish DST #1:
 MISS (4,668'-4,818')
 7am @ 4,818'.
 Resumed Drilling @ 9:35am.
 25 --- 7am @ 5,090'.
 26 --- 7am @ 5,370'.
 RTD (5,440') @ 4:33pm.
 Start &
 27 --- Finish E-LOG.
 [Superior Well Services]

DST \$1 - MISS CHERT

Rotary Depth: 4,668' - 4,818'
 Logger's Depth: 4,664' - 4,814'

Recovery: 20P- GTS 60"
 120' Mud
 180' O&GcWMud (1%O,4%G,20%,75%M)

Recovery Water: Not Reported
 System Water: (5,000 ppm)

IFP: 83# - 127# / 30"
 ISIP: 1,276# / 60"
 FFP: 148# - 180# / 60"
 FSIP: 1,605# / 140"
 123 deg F
 MH: 2,413# - 2,312#

IF: Strong Blow. BOB in 90 seconds.
 ISI: No Blow back.
 FF: Strong Blow. BOB in 2 seconds. GTS in 60 minutes.
 FSI: No Blow back.

Total Fluid: 300'

Reported Rw = Not Reported

Trilobite Testing, Inc.
 Pratt, KS.

HOLE DEVIATION (237' - 5,440')

DEPTH / TVD	--- INCLINATION	AZIMUTH	NORTH	SOUTH	EAST	WEST	DOGLEG deg/100'
237' /	--- 0.75 (Surface)						
1,200' /	--- 0.75						
1,699' /	--- 1.00						
2,229' /	--- 1.00						
2,356' /	--- 1.00 (Bit Trip)						
2,793' /	--- 0.50						
3,253' /	--- 1.00						
3,850' /	--- 1.00						
4,300' /	--- 0.50						
4,818' /	--- 0.75 (DST #1)						
5,440' /	--- 0.75 (RTD)						

VAL ENERGY, INC.

Wichita, Kansas

Drilling Rig #3 - (620) 617-6541

Toolpusher: Greg Davidson (620) 200-7468

Mud Pump: National K-500
6-1/2" x 15 @ 52/54 SPM.

Pump Pressure: 850 / 900 psi @ standpipe.

On main hole (tri-cone), 75 - 80 RPM.

Weight Indicator Check @ 4,514':
String Weight calculates 112,297#.

Weight Indicator shows 110M; therefore,
weight indicator light by about 2 %.

Dry Wt of Collars: 51,212#
[533.46' x 96#/ft = 51,212#]
Drill Collars: 6-1/2" OD x 2-1/2" ID
Buoyancy Wt of Collars: 44,042#
[51,212# x .860 (9.2ppg) = 44,042#]
Available WOB: 37,436#
[44,042# x .85 = 37,436#]
Tension on drill string - 6,606#
[15% Design Factor]
to keep drill string straight.

Contractor reports running
38M/40M on bit

BIT RECORD

DATE	SIZE	TYPE	JET SIZE	DEPTH IN / OUT	CUM. FT.	HOURS	ROP
16 Sept	14-3/4"	JZ - RR	16 - 16 - 16	0' / 237'	237'	2.00	118.5
17 Sept	7-7/8"	JZ (PDC)	6 / 16's	237' / 2,356'	2,119'	30.75	68.9
19 Sept	7-7/8"	JZ QX-20	16 - 16 - 16	2,356' / 5,440'	3,086'	133.25	23.2

ROCK TYPES

POROSITY

- Earthy
- Fenest
- Fracture
- Inter
- Moldic
- Organic
- Pinpoint
- Vuggy

LITHOLOGY

- Anhy
- Bent
- Brec
- Cht
- Clyst
- Coal
- Granite wash
- Congl
- Dol lmst
- Silty dol
- Calc dol

- Dol 2
- Dol
- Gyp
- Igne
- Lmst 2
- Lmst
- Meta
- Mrlst
- Salt
- Shale 3
- Shale 3
- Shcol
- Shgy
- Sltst
- Ss
- Till
- Ss 2

MINERAL

- Mica
- Anhy

- Arggrn
- Arg
- Bent
- Bit
- Brecfrag
- Calc
- Carb
- Chtdk
- Chtlt
- Dol
- Feldspar
- Ferrpel
- Ferr
- Glau
- Gyp
- Hvymin
- Kaol
- Marl
- Minxl
- Nodule
- Phos
- Pyr

- Salt
- Sandy
- Silt
- Sil
- Sulphur
- Tuff
- Copper
- Ooliticastic
- Ooloid
- Oolite
- Sucrosic
- Dark specks

STRINGER

- Calc dol
- Silty dol
- Anhy
- Arg
- Bent
- Coal
- Dol
- Dol ls




- Gyp
- Ls
- Mrst
- Calc dol
- Sltstrg
- Ssstrg
- Chalk
- New symbol
- Oil
- Spotted
- Ques
- Dead
- Gas
- Oil/gas
- Bed contact

ACCESSORIES

- Algae
- Amph
- Belm
- Bioclst
- Brach
- Bryozoa
- Cephal
- Coral
- Spore
- Crin
- Echin
- Fish
- Foram
- Fossil
- Gastro
- Oolite
- Ostra
- Pelec
- Pellet
- Pisolite
- Plant
- Strom

OTHER SYMBOLS

ACTIVITY

-  Lost circulation
-  Circulate for sample 2
-  Circulate for samples



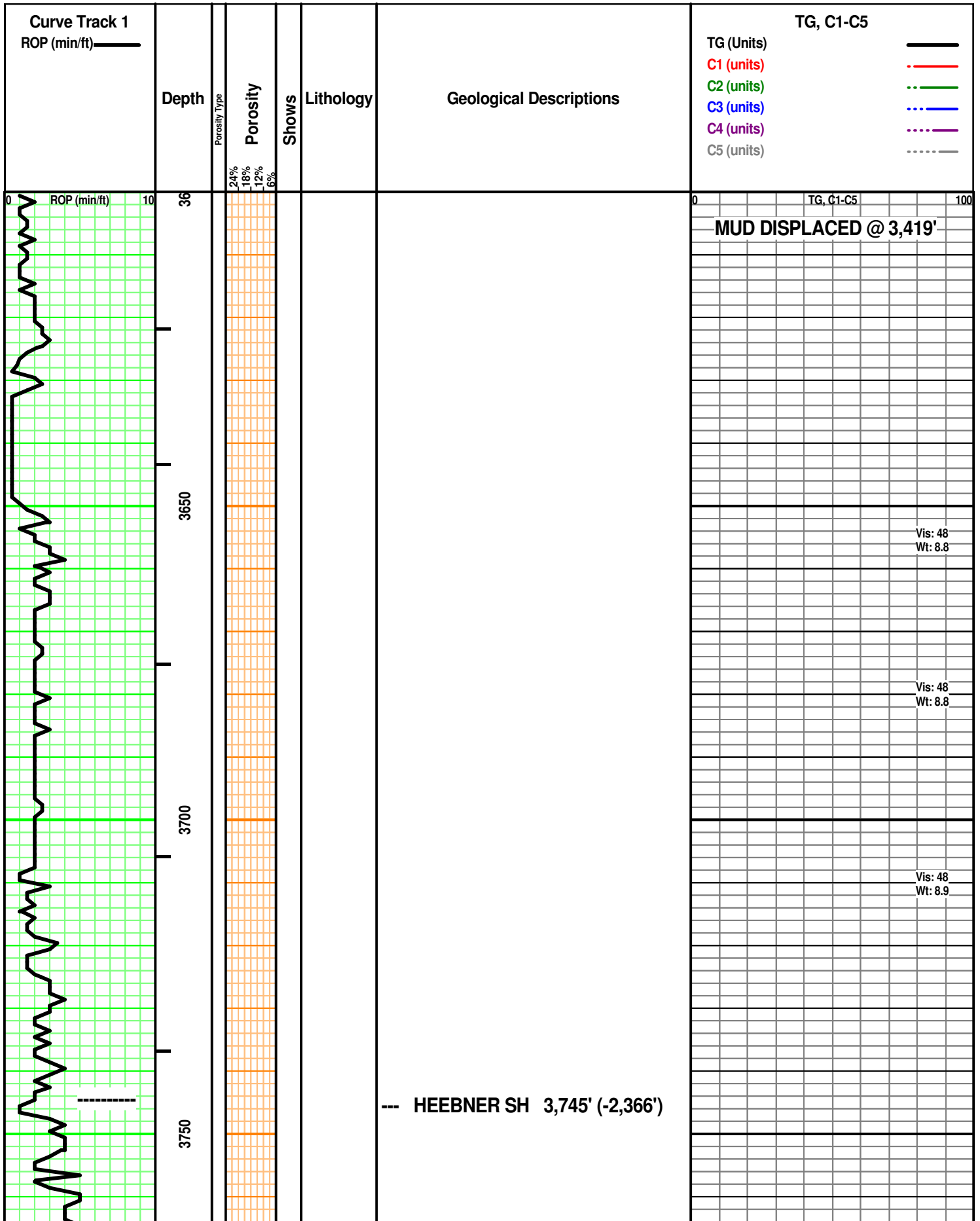
-  Rtd
-  Bit trip

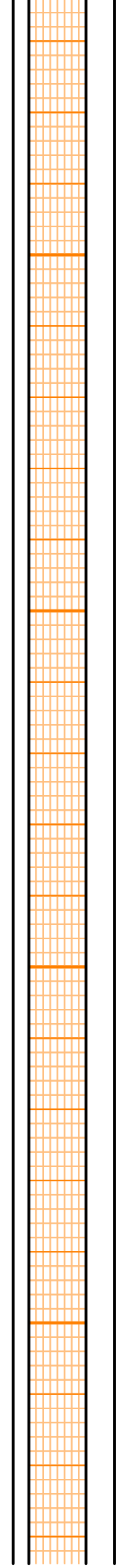
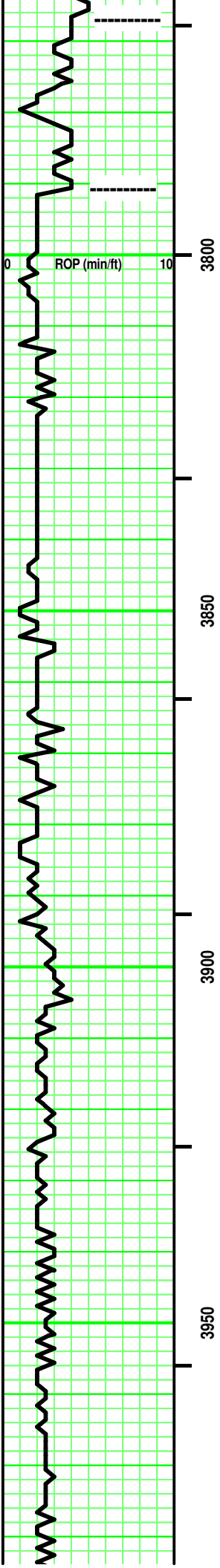
INTERVAL

-  Core
-  Dst
-  Jammed core

EVENT

-  Connection
-  Rft
-  Sidewall

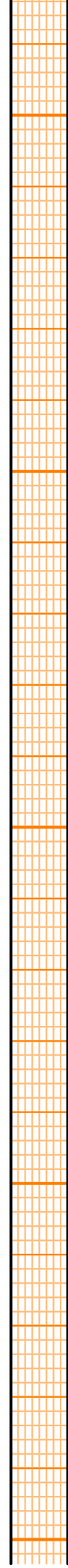
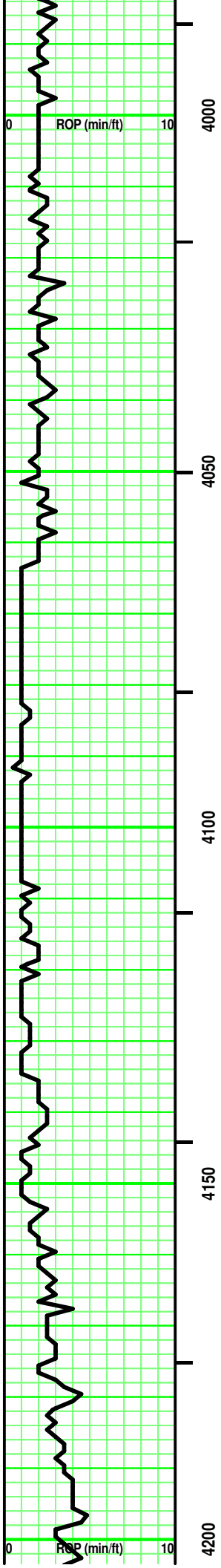




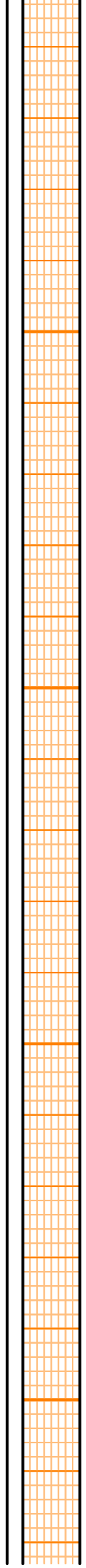
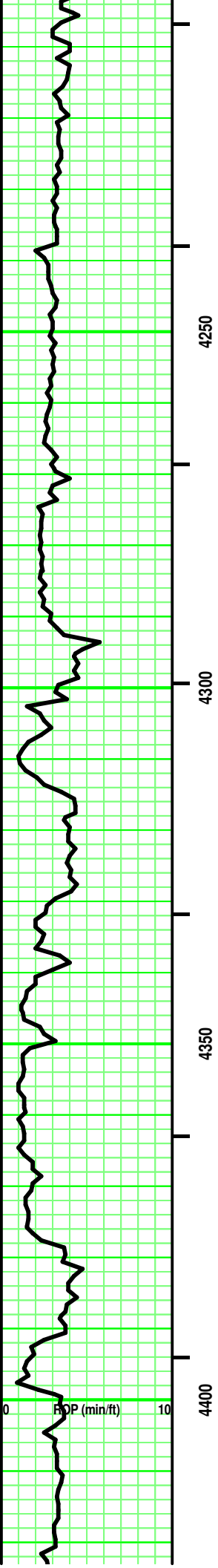
----- TORONTO 3,769' (-2,388')

---- DOUGLAS SH 3,791' (-2,412')

0	TG. C1-C5	100
		Vis: 48 Wt: 9.0
		Vis: 46 Wt: 9.0
		Vis: 48 Wt: 9.2
		Vis: 58 Wt: 9.2



		Vis: 50 Wt: 9.2+
0	TG, C1-C5	100
		Vis: 52 Wt: 9.3
		Vis: 49 Wt: 9.2
		Vis: 49 Wt: 9.2
		Vis: 47 Wt: 9.2
0	TG, C1-C5	100



Vis: 48
Wt: 9.2

Vis: 49
Wt: 9.3

Vis: 45
Wt: 9.3+

Hole Dev: 0.50 deg @ 4,300'

Vis: 46
Wt: 9.3

Vis: 45
Wt: 9.2

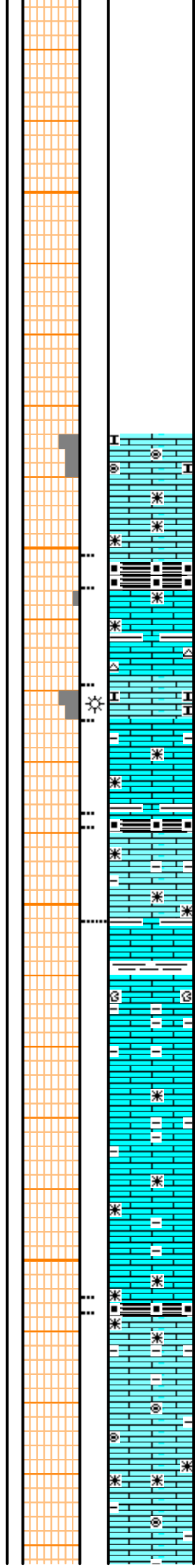
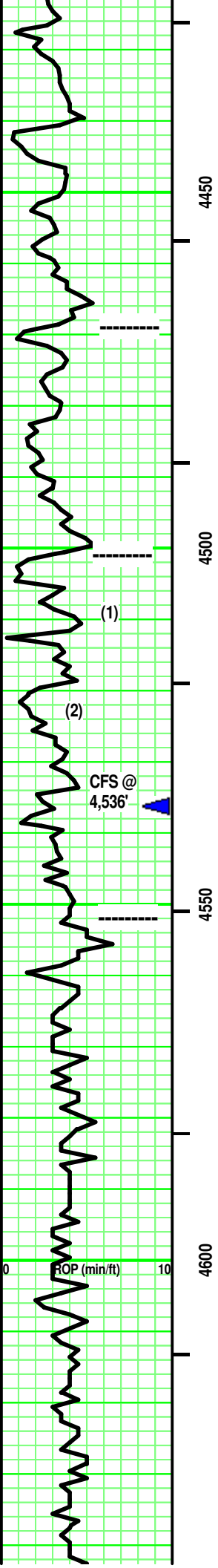
Vis: 47
Wt: 9.3

100 units = 1% Gas

TG, C1-C5

Dry Wt of Collars: 51,212#
[533.46' x 96#/ft = 51,212#]

Drill Collars: 6-1/2" OD x 2-1/2" ID
Buoyancy Wt of Collars: 44,042#
[51,212# x .860 (9.2ppg) = 44,042#]



----- STARK SH 4,469' (-3,090')

LS - Lt/ Med Tan. some Off White. Sing/ tr Mot. XF-/ Micro-xln. xln & part por. few pcs: Micro-Oolites. tr subchalky in part. tr Re-xln. Firm. with depth. Tr to No vis por.

----- HUSHPUCKNEY SH 4,501' (-3,122')

SH - Black. Sing. carb. soft.

LS (1) - Tan. Sing. XF-/ Micro-xln. xln por. some Re-xln. some interbedded Med Gray Sh. Firm. (tr CHERT - Tans/ Off White. Mot (speckled). Opaque. No tripolitic. No inclusions.) No/ tr vis por.

LS (2) - Tan/ Off White. Sing. Micro-xln. xln por. subchalky. partly Friable. No/ tr vis por. No/? odor. Spotted, yellow fluorescence. A/C, no free oil or gas. No stain. Weak Pos cut/residual. Weak Pos acid/ residual.

LS - Similar to (1) above.

SH - Med Gray at top changing to: Black. Sing. carb. tr fissile.

LS - Tans. Sing. tr XF-/ Micros-xln. xln por. tr Re-xln. tr argil. mostly Firm. No/ tr vis por.

----- B / KC 4,552' (-3,173')

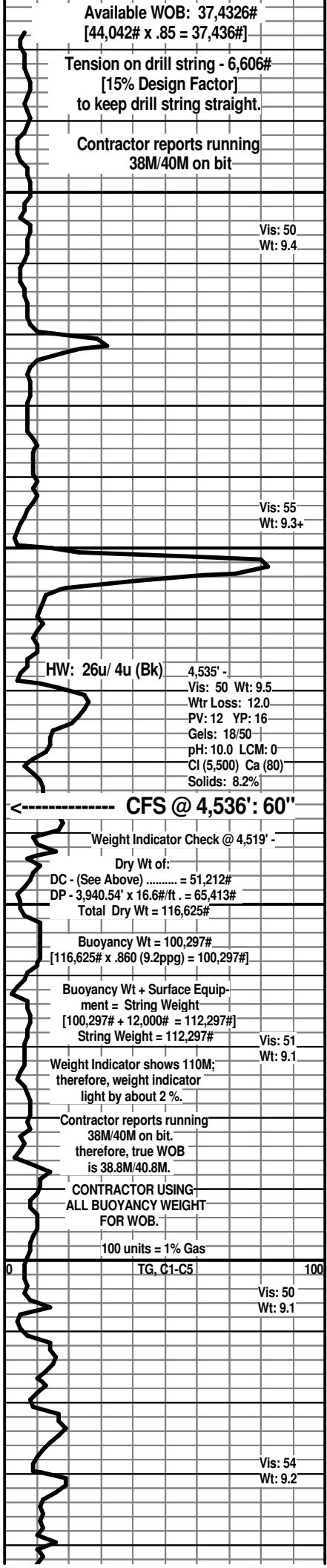
Interbedded & Intermixed LS & SH

LS - Tan/ Grays, rare Off White. Sing. Micro-/ tr crypto-xln. xln por. some Re-xln. some argil. Firm. No/ tr vis por.

SH - Med/ Dark Grays, Black - carb. some Silvery Gray, some Greenish Gray. Sing. some Ls interbedding / rare rubble.

SH - Black. Sing. carb. tr fissile.

LS - Tans/ some Lt Gray & tr Off White. Sing/ some Mot. XF-/ Micro-xln. xln por. some Re-xln. some argil/ shaly in part. few pcs Mico-Oolites. Firm. No/ tr vis por.



Available WOB: 37,4326#
 [44,042# x .85 = 37,436#]
 Tension on drill string - 6,606#
 [15% Design Factor]
 to keep drill string straight.
 Contractor reports running
 38M/40M on bit

Vis: 50
 Wt: 9.4

Vis: 55
 Wt: 9.3+

HW: 26u/ 4u (Bk) 4,535' -
 Vis: 50 Wt: 9.5
 Wtr Loss: 12.0
 PV: 12 YP: 16
 Gels: 18/50
 pH: 10.0 LCM: 0
 Cl (5,500) Ca (80)
 Solids: 8.2%

----- CFS @ 4,536': 60"

Weight Indicator Check @ 4,519' -

Dry Wt of:
 DC - (See Above) = 51,212#
 DP - 3,940.54' x 16.6#/ft . = 65,413#
 Total Dry Wt = 116,625#

Buoyancy Wt = 100,297#
 [116,625# x .860 (9.2ppg) = 100,297#]

Buoyancy Wt + Surface Equip-
 ment = String Weight
 [100,297# + 12,000# = 112,297#]
 String Weight = 112,297#

Vis: 51
 Wt: 9.1

Weight Indicator shows 110M;
 therefore, weight indicator
 light by about 2%.

Contractor reports running
 38M/40M on bit.
 therefore, true WOB
 is 38.8M/40.8M.

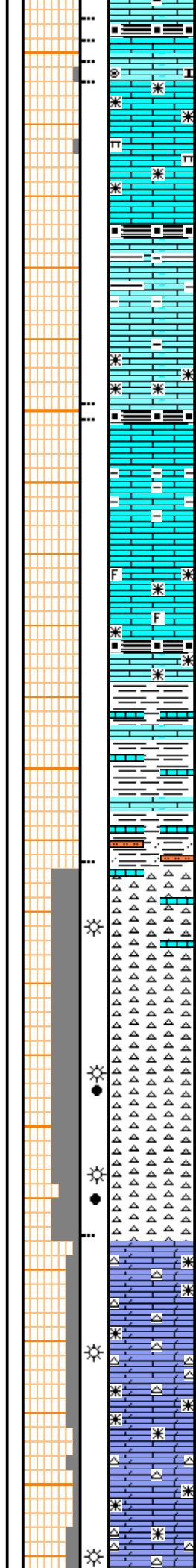
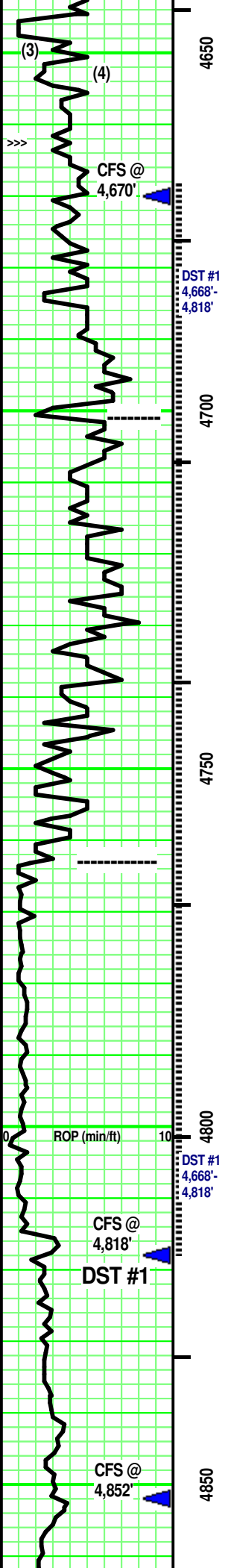
CONTRACTOR USING
 ALL BUOYANCY WEIGHT
 FOR WOB.

100 units = 1% Gas

TG, C1-C5

Vis: 50
 Wt: 9.1

Vis: 54
 Wt: 9.2



SH - Black, Carb. Sing. Soft.
PAWNEE 4,648' (-3,269')
 LS (3) - Tans/ some Lt Gray. Sing/ some Mot. XF-/ some Micro-xln. xln por. some Re-xln. some argil/ shaly in part. No/ tr vis por.
 few pcs LS (4) - Tan/ tr Off White Micro-VF oolites & nodules. Tan to Off White matrix. tr subchalky. mixture of: point & 'floating' particle contact. partly friable. No/ tr vis por.

SH - Black, Carb. Sing. Soft.
 LS - Tan/ some Lt & Med Gray. Sing. Micro-/ XF-xln. xln por. Re-xln. tr argil/shale (some interbedded). mostly Firm. No/ tr vis por.

SH - Black, Carb. Sing. Soft
CHEROKEE GP 4,701' (-3,322')
 Interbedded & Intermixed SH & LS
 LS - Lt & Med Tan/ some Lt Gray, Med Gray with depth. Sing/ tr Mot. XF-/ Micro-xln. xln por. some Re-xln. argil in part. tr fossil frags. some, minute limy frags. mostly Firm. mostly No/ tr vis por.

SH - Med/ Dark Gray, some Greenish Gray. some Black, carb, soft. tr pyritic. some limy streaks in part.

SH - Black. Sing. carb. tr fissile.

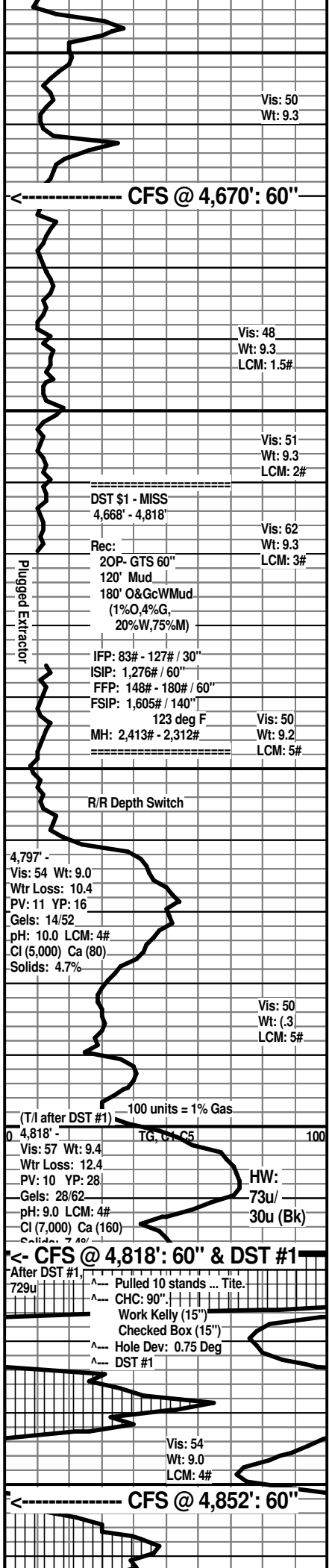
SH - Grays. Sing. tr calc in part. some rubble with depth.

Intermixed/ Interbedded LS similar to above. Add Siltstone - Pale Blue/ tr Greenish Blue. Sing. some highly limy. misc inclusions minute (pellets/ nodules/ rare fossil frags).
 few pcs SS at depth - Clear/ Bluish Green. Mot. Silt sized qtz grais. SR. Mod sort & sph. frosted luster. 'floating' grain contact in silty matrix. partly Firm. No/ tr vis por. minute, irregular brown blotches.

MISS 4,763' (-3,384')
 CHERT - Off White/ Pale Lt Gray. tr Semi-transparent/Opaque. No/ few/ some lots misc fossil incl. tr to some Tripolitic. Faint/ Fair odor. spotted/ rare uniform yellow fluorescence. A/C, no free oil or gas. spotted/ rare uniform Med Brown stain. Pos cut & residual. Pos acid & residual. oil spots on wash water increasing with depth.

fre pcs LS towards top- Tans/ some SI Pale Gray. Sing. Micro-/ tr XF-xln. xln por. some Re-xln. some misc rubble. partly Firm. No/ tr vis por.

LS (Dol) - Tan/ Lt Gray. Sing. XF-/Micro-xln. xln por. Re-xln. partly Firm. Chert as (5) below. No/ tr vis por
CHERT (4) - Off White/ tr Silvery Gray/ rare Tan.
 Mot/ Mixed. mostly Opaque to semitransparent. rare to mostly fair Spotted Tripolitic with Spotted Lt to Med Brown stain ?/ Faint odor. tr/ fair Spotted Uniform Yellow fluorescence. No free oil/ rare minute gas bubble. Stain as above (25% - 55%). Weak to Pos cut/ residual. Weak to Pos acid/ residual. some Oil spots on wash water.



DST #1 - MISS
 4,668' - 4,818'

Rec:
 20P- GTS 60"
 120' Mud
 180' O&GcWMud
 (1%O,4%G,
 20%W,75%M)

IFP: 83# - 127# / 30"
 ISIP: 1,276# / 60"
 FFP: 148# - 180# / 60"
 FSIP: 1,605# / 140"
 123 deg F
 MH: 2,413# - 2,312#

Vis: 51
 Wt: 9.3
 LCM: 2#

Vis: 62
 Wt: 9.2
 LCM: 3#

Vis: 50
 Wt: 9.2
 LCM: 5#

R/R Depth Switch

4,797 -
 Vis: 54 Wt: 9.0
 Wtr Loss: 10.4
 PV: 11 YP: 16
 Gels: 14/52
 pH: 10.0 LCM: 4#
 Cl (5,000) Ca (80)
 Solids: 4.7%

Vis: 50
 Wt: (.3
 LCM: 5#

(T/I after DST #1) 100 units = 1% Gas

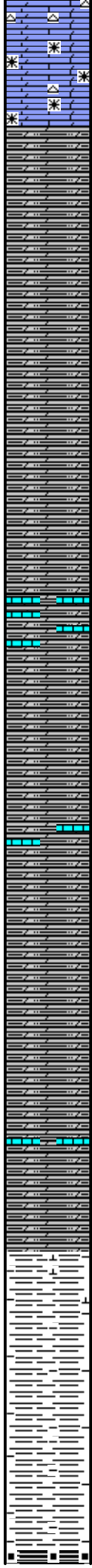
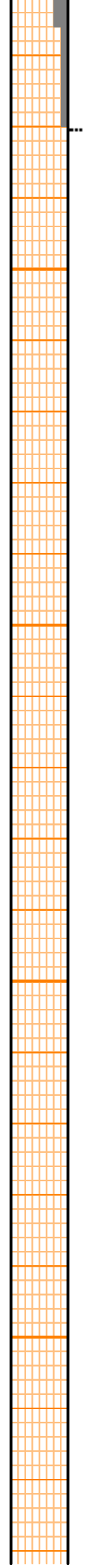
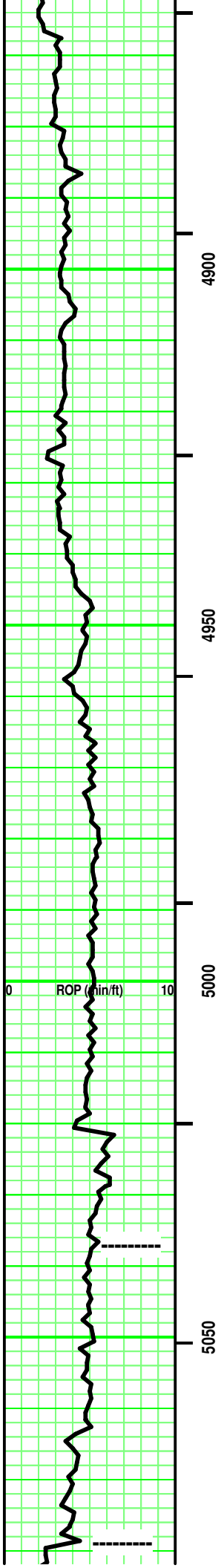
4,818' - TG, Cl, Ca
 Vis: 57 Wt: 9.4
 Wtr Loss: 12.4
 PV: 10 YP: 28
 Gels: 28/62
 pH: 9.0 LCM: 4#
 Cl (7,000) Ca (160)

CFS @ 4,818': 60" & DST #1

After DST #1,
 729u Pulled 10 stands ... Tite.
 CHC: 90"
 Work Kelly (15")
 Checked Box (15")
 Hole Dev: 0.75 Deg
 DST #1

Vis: 54
 Wt: 9.0
 LCM: 4#

CFS @ 4,852': 60"



Add: LS (Dol) - Lt/ some Med Gray. Increasing with depth. Sing. XF-/Micro-xln. xln por. Firm. tr Chert similar to 5 above. No show. Firm. No/ tr vis por.

Dolomite (Calc) - tr Tan/ mostly Lt Gray, tr Med Gray. Sing. Re-xln. xln & tr sucrosic por. Silty in part. Massive. No/ tr vis por.

Dolomite (Calc) - Lt & Med Gray. Sing. Re-xln. xln sucrosic por. Silty in part. Massive. No/ tr vis por.

Add: Lt Gray limy streaks.

Add: Lt Gray limy streaks.

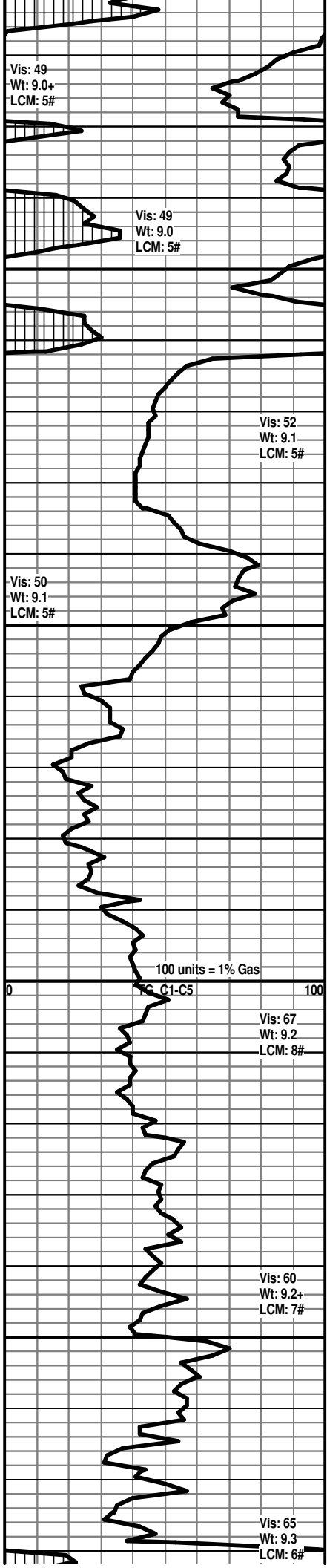
Dolomite (Calc) - Lt & Med Gray. Sing. Re-xln. xln sucrosic por. Silty in part. Massive. No/ tr vis por.

Add: Lt Gray limy streaks.

----- KINDERHOOK SH 5,037' (-3,658')

SH - Dark/ V Dark Gray, Greenish Gray. Sing/ tr Mot. Firm. tr calc in part.

----- WOODFORD SH 5,079' (-3,700')



Vis: 49
Wt: 9.0+
LCM: 5#

Vis: 49
Wt: 9.0
LCM: 5#

Vis: 52
Wt: 9.1
LCM: 5#

Vis: 50
Wt: 9.1
LCM: 5#

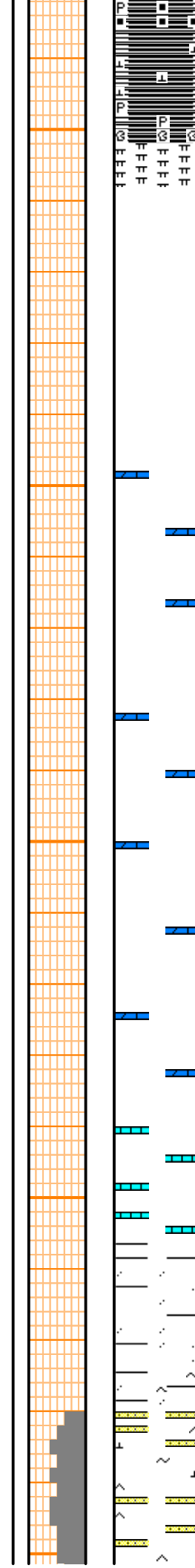
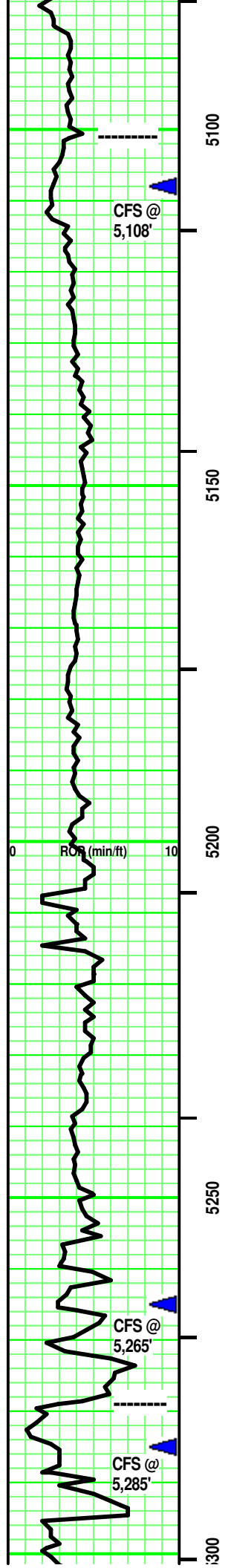
100 units = 1% Gas

FC C1-C5

Vis: 67
Wt: 9.2
LCM: 8#

Vis: 60
Wt: 9.2+
LCM: 7#

Vis: 65
Wt: 9.3
LCM: 6#



SH - Black. Sing. carb. (Brown hue scratch.)
Massive. some blocky. tr pyritic.

SH - Dark Brown, Brownish Black. Sing. highly limy (silty texture) in part. highly pyritic in part. Firm.

----- **VIOLA 5,101' (-3,722')**

MARL - Lt Gray. Sing. Micro-xln. xln & part por. Argil. Highly Limy in part. Firm. No/ tr vis por.

few pcs: LS (dolo in part) - Off White/Tans. Sing/ Mot. mixture of Crypto-/ Micro-xln. xln por. some highly dol in partsome Re-xln. (some CHERT - Clear/ White/ Off White/ tr Tan. Mottled-or-Mixed. Opaque to mixed semitrans- parent. rare Inclusions: fossil hash/ fragments. No/ some tripolitic.) Firm. No/ tr vis por.

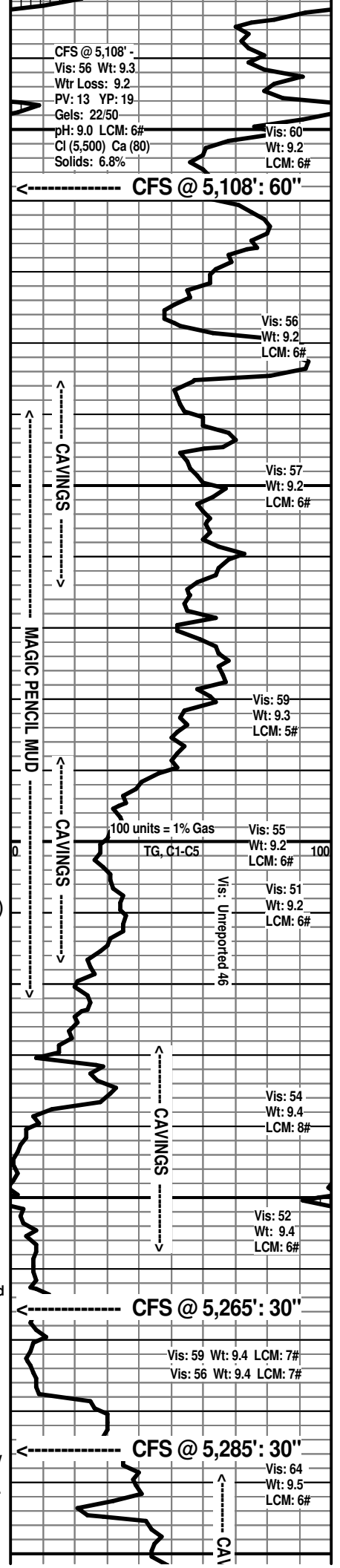
few pcs: LS (dolo in part) - Off White/Tans. Sing/ Mot. mixture of Crypto-/ Micro-xln. xln por. some highly dol in partsome Re-xln. (some CHERT - Clear/ White/ Off White/ tr Tan. Mottled-or-Mixed. Opaque to mixed semitrans- parent. rare Inclusions: fossil fragments. No/ some tripolitic.) Firm. No/ tr vis por.

few pcs: LS - Off White/Lt Gray. Sing/ Mot. XF-/Micro-xln. xln por. some Re-xln. Firm. Dense. No/ tr vis por.

SH - Dark Greenish Gray/ Green Gray. Sing. Blocky. Sharp edges on some pcs. Sandy with depth: SS - Clear/ Grayish Green. Mot XF-/ silt qtz grains. SA/SR. Mod sort & sph. frosted luster. point/ some 'floating' grain contact. tr minute glauc grains. No/ tr vis por.

----- **WILCOX SS 5,279' (-3,900')**

SS - Clear/ Off White/ some Pale Lt Gray, Tan. Mot/Mixed. some VF- mostly silt sized qtz grains. SR/SA. Hi sort. Mod sph. Vitreous/ frosted grain contact. Calc/ sil cement. mostly sututred/ tr point grain contact. tr argil frags in part. rare carb flecks. rare/ tr glauc specks. partly Friable. Fair/ good vis por. No odor. No flouresence. No free oil or gas. tr spotted, irregular Lt Brown stain. No cut/ residual. No acid/ residual.



CFS @ 5,108' -
Vis: 56 Wt: 9.3
Wtr Loss: 9.2
PV: 13 YP: 19
Gels: 22/50
pH: 9.0 LCM: 6#
Cl (5,500) Ca (80)
Solids: 6.8%

----- **CFS @ 5,108': 60''**

Vis: 60
Wt: 9.2
LCM: 6#

Vis: 56
Wt: 9.2
LCM: 6#

----- **CAVINGS** -----

Vis: 57
Wt: 9.2
LCM: 6#

----- **MAGIC PENCIL MUD** -----

Vis: 59
Wt: 9.3
LCM: 5#

----- **CAVINGS** -----

100 units = 1% Gas
TG, C1-C5

Vis: 55
Wt: 9.2
LCM: 6#

Vis: 51
Wt: 9.2
LCM: 6#

Vis: Unreported 4#

----- **CAVINGS** -----

Vis: 54
Wt: 9.4
LCM: 8#

Vis: 52
Wt: 9.4
LCM: 6#

----- **CFS @ 5,265': 30''** -----

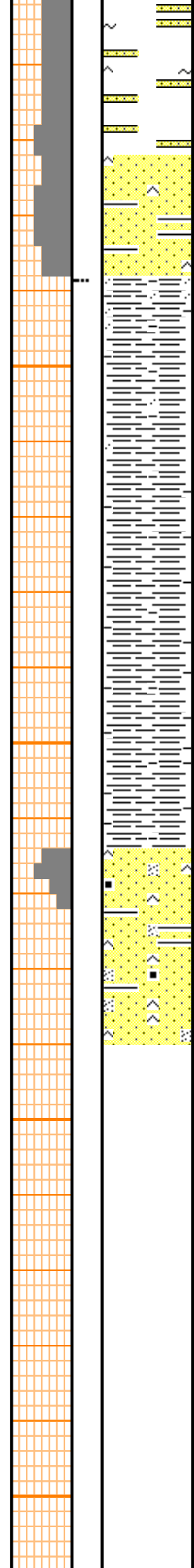
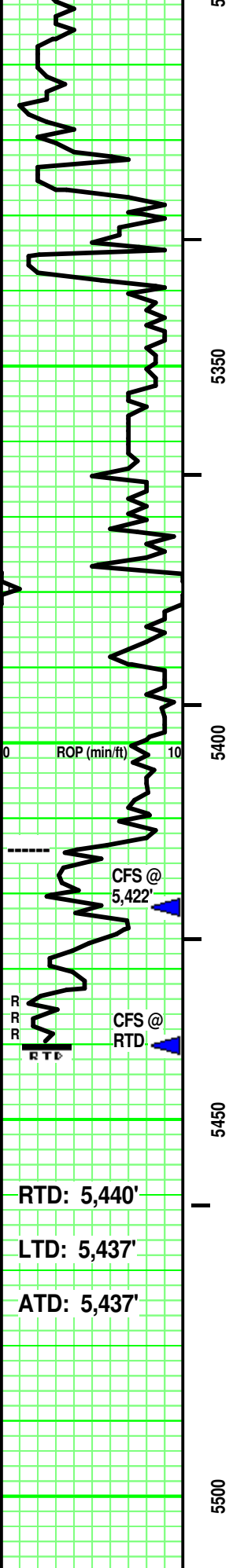
Vis: 59 Wt: 9.4 LCM: 7#
Vis: 56 Wt: 9.4 LCM: 7#

----- **WILCOX SS 5,279' (-3,900')** -----

----- **CFS @ 5,285': 30''** -----

Vis: 64
Wt: 9.5
LCM: 6#

----- **CAI** -----



SS - Clear/ Pale Lt Gray/ some Off White. Mot. VF- tr silt sized qtz grains. SR/SA. Mod sort. Mod sph. Vitreous/ some frosted grain contact. Calc/ tr sil cement. Point/ some sutured grain contact. some argil in part. partly Friable. Fair/ good vis por.

SH - Grays/ Green Gray/ tr Pale Greenish Gray. Sing/ tr Mot. highly sandy in part (similar to immediately above). mixture of 'crumbly' / grainy / blocky / some waxy. Massive. tr ductile in part.

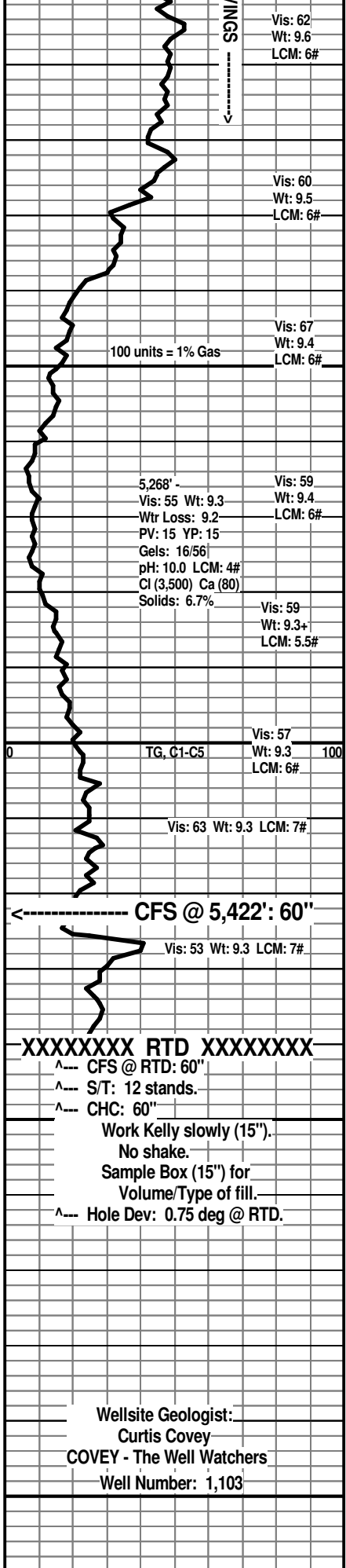
----- McLish SS 5,514' (-4,035')
 SS - Clear/ Off White. Mot. rare F/ mostly VF- & silt sized qtz grains. SR/SA. Hi sort. Mod sph. Vitreous/ frosted grain contact. Calc/ sil cement. mostly sutured/ tr point grain contact. tr argil in part. rare carb flecks. lots, SA, VF Dark Gray frags. few pcs: SA, Silt/tr VF Dark Green frags. partly Friable. Fair/ tr good vis por.

RTD: 5,440'
 LTD: 5,437'
 ATD: 5,437'

RICKE #2

1,005' FNL & 1,010" FEL 35-T35S-R11W
 Barber County, Kansas

WOOLSEY OPERATING CO., LLC.
 Wichita, Kansas



Vis: 62
 Wt: 9.6
 LCM: 6#

Vis: 60
 Wt: 9.5
 LCM: 6#

Vis: 67
 Wt: 9.4
 LCM: 6#

100 units = 1% Gas

5,268' -
 Vis: 55 Wt: 9.3
 Wtr Loss: 9.2
 PV: 15 YP: 15
 Gels: 16/56
 pH: 10.0 LCM: 4#
 Cl (3,500) Ca (80)
 Solids: 6.7%

Vis: 59
 Wt: 9.3+
 LCM: 5.5#

Vis: 57
 Wt: 9.3
 LCM: 6#

Vis: 63 Wt: 9.3 LCM: 7#

----- CFS @ 5,422': 60"

Vis: 53 Wt: 9.3 LCM: 7#

XXXXXXXX RTD XXXXXXXX

- ^--- CFS @ RTD: 60"
- ^--- S/T: 12 stands.
- ^--- CHC: 60"
- Work Kelly slowly (15").
- No shake.
- Sample Box (15") for Volume/Type of fill.
- ^--- Hole Dev: 0.75 deg @ RTD.

Wellsite Geologist:
 Curtis Covey
 COVEY - The Well Watchers
 Well Number: 1,103