

Thomas J. Funk
Petroleum Geologist
785-542-3359

Geologist's Report
Drilling Time and Sample Log

OPERATOR Murfin Drilling Co., Inc
LEASE Kuhlman 'E'
FIELD Wildcat
LOCATION 2280' FSL & 335' FWL
SEC. 35 **TWP. 12S** **RGE. 32W**
COUNTY Logan **STATE** Kansas

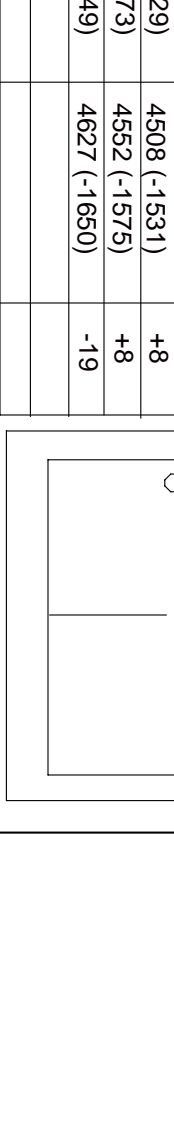
ELEVATION
KB 2977

CASING RECORD
CONTRACTOR Murfin Drilling Co. Rig #24
COMM. 1/25/2011 **COMP. 2/4/2011**
R.T.D. 4650 **LOG TD 4649**
SAMPLES SAVED FROM 3600 **TO TD**
DRILLING TIME KEPT FROM 3600 **TO TD**
SAMPLES EXAMINED FROM 3600 **TO TD**

GEOLOGICAL SUPERVISION FROM 3600 **TO TD**
MUD UP 3000 **TYPE MUD** Chemical

FORMATION	LOG TOP DATUM	SAMPLE TOP DATUM	STRUCT COIMP
Anhydrite	2492 (+485)	2492 (+485)	+2
B/Anhydrite	2515 (+482)	2515 (+482)	+1
Topoka	3732 (-755)	3732 (-755)	-3
Heebner Sh	3958 (-981)	3960 (-983)	-2
Lansing	3998 (-1021)	4000 (-1023)	+1
Marmion Creek	4142 (-1165)	4144 (-1167)	+2
Stark Sh	4224 (-1247)	4226 (-1249)	+4
Marmion	4322 (-1345)	4322 (-1345)	+5
Pawnee	4428 (-1451)	4432 (-1455)	+4
Carthage Sh	4506 (-1529)	4508 (-1531)	+8
Johnson Zone	4530 (-1573)	4522 (-1575)	+8
Mississippian	4626 (-1649)	4627 (-1650)	+8

ELECTRICAL SURVEYS
Log Tech
DIL MEL
CN/CDL BHCS



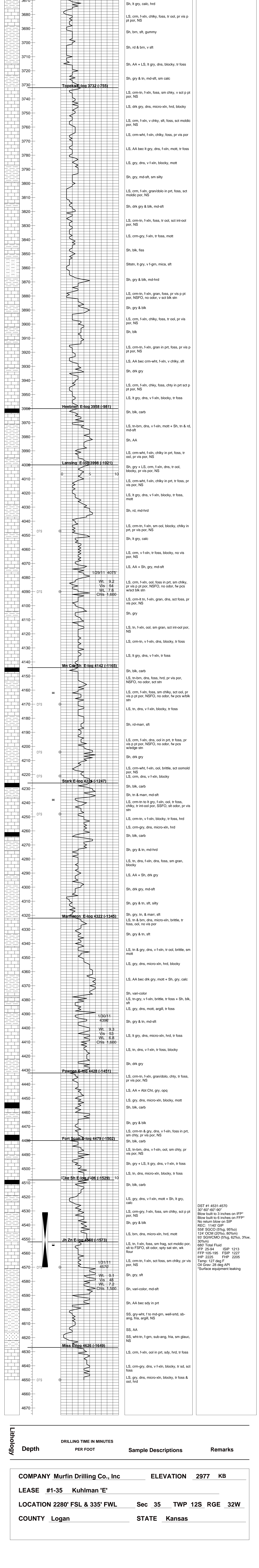
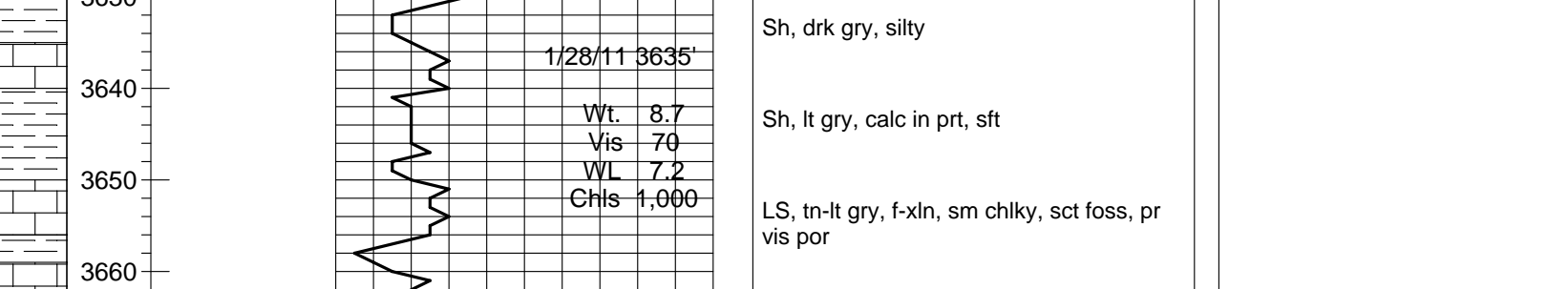
REFERENCE WELL FOR STRUCTURAL COMPARISON: Murfin Drilling Co., #1-35 Kuhlman 'D'
335 FNL 2200' FWL sec. 35-72S-32W, Logan Co, KS

Daily Progress	NOI	Size	Make	Type	Depth Out	Feet	Hours
1/25/11	Spud	1 1/2	HTC	RR	222	222	2
1/26/11							
1/27/11	2485'	2	7/8" Smith	M616	3517	3296	38
1/28/11	3535'	3	7/8" Smith	F271	4650	1133	55
1/29/11	4075'						
1/30/11	4390'						
1/31/11	4570'						
2/1/11	4650' TD						
2/2/11	Shut down/cowl						
2/3/11	Shut down/cowl						
2/4/11	Ring Csg						

Remarks and Recommendations:
Based upon log analysis, DST recovery, and sample examination it was recommended that casing be set to further evaluate the #1-35 Kuhlman 'E'.

Thomas Funk
Petroleum Geologist

LEGEND



DST #1 4531-4570
30"-60"-60"-90"
Blow built to 3 inches on IFF*
Blow built to 6 inches on FFP*
No return blow on SIP
REC: 1140' GIP
558' SGCO (5%g, 95%o)
124' OCM (20%o, 80%g)
93' SGWCMO (5%g, 62%o, 3%w, 30%sm)
680' Total Fluid
IFF 25-94 FSIP 1213
IFF 105-195 FSIP 1227
IHP 2225 FHP 2205
Temp: 127 deg F
Oil Grav: 28 deg API
*Surface equipment leaking

COMPANY Murfin Drilling Co., Inc **ELEVATION** 2977 **KB**
LEASE #1-35 **Kuhlman 'E'**
LOCATION 2280' FSL & 335' FWL **Sec 35** **TWP 12S** **RGE 32W**
COUNTY Logan **STATE** Kansas