

GEOLOGIST'S REPORT

DRILLING TIME AND SAMPLE LOG

BACH OIL PRODUCTION

WELL: DEWEY #1

**LOC.: 850' FSL & 1610' FEL
SEC. 27-6-20W**

**ROOKS COUNTY, KANSAS
API: 15-163-23945-00-00**

**DRILLING CONTR.: MURFIN RIG #16
SPUD: 4-6-11 COMP: 04-11-11
MUD UP: 2800' TYPE MUD: CHEM.
DRILL TIME: 2900-RTD
RTD: 3725' LTD:3724'
SAMPLES SAVED: 3050'-RTD
GEOLOGIST: ROBERT J. PETERSEN**

ELEVATION

**KB: 2183'
GL: 2178'
LOG MEASURED
FROM: KB**

SURFACE CASING

**8 5/8" surface csg.
Set @218' KB.
Cem. w/210sx Common,
3% CC, 2% Gel.**

PRODUCTION CASING

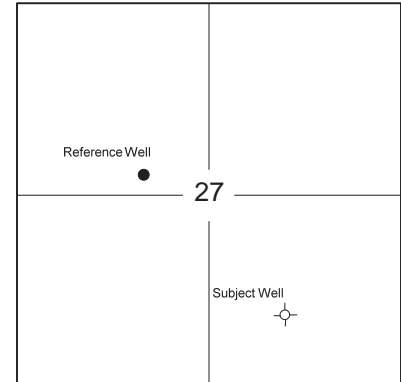
D & A

WELL LOG SURVEYS

RAG

ELECTRIC LOG TOPS

FORMATION	DEPTH	DATUM	POSITION
Stone Corral	1776	+407	+2
Base Stone Corral	1807	+376	FLAT
Topeka	3183	-100	-4
Heebner	3384	-1201	-10
Toronto	3406	-1223	-4
Lansing	3421	-1238	-9
Base Kansas City	3625	-1442	-12
Arbuckle	3679	-1496	-30



REFERENCE WELL:

Bach Oil
Lela #3
NW SE SE NW
27-6-20W
EI 2040KB

DAILY REPORT

@7:00 A.M.

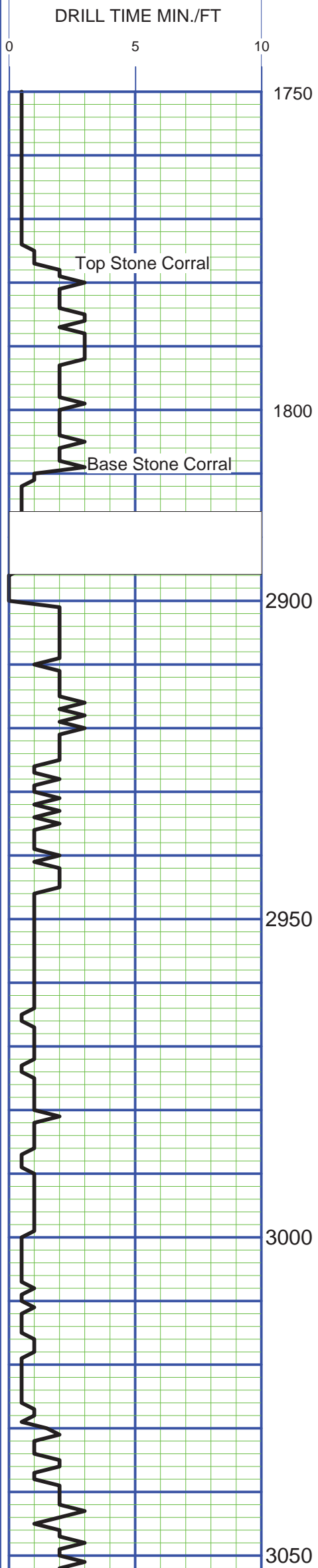
4-6-11 MIRU SPUD
4-7-11 220' Drilling
4-8-11 1610' Drilling
4-9-11 2810' Drilling
4-10-11 3435' Drilling
4-11-11 3725' DST#1

REMARKS AND RECOMMENDATIONS

Due to the structural position and DST results the operator plugged and abandoned this well.

Respectfully submitted,

Robert J. Petersen

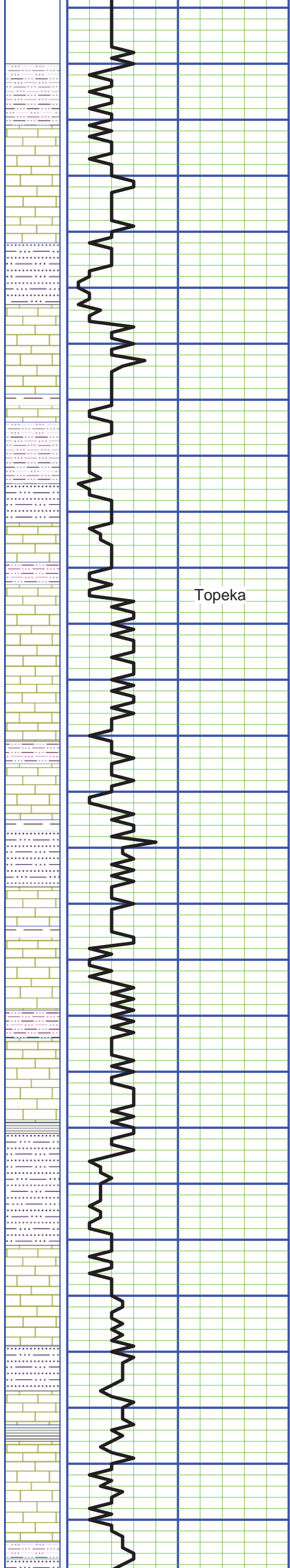


SAMPLE DESCRIPTION

LS; Cream/lt gray, fine crystalline, chalky (soft)(70)

LS; Cream/tan, fine crystalline to dense, foss, chalky + SH; Gray, silty-sandy (80)

LS; Cream, fine crystalline, foss, chalky + LS; Gray, dense + SH; Red/gray (90)



3100
3150
3200
3250
3300
3350

Topeka

LS: Lt gray/cream, fine crystalline, foss, chalky + SH; Gray (3100)

SS; Gray/lt brow, fine grained, friable, silty (10)

LS; Gray/dark gray, fine crystalline, fossil-mottled, chalky (20)

LS; Cream, fine crystalline, foss, chalky(40)

SS: Gray, silty + SH; Red/gray (50)

LS; Gray/cream, fine crystalline, fossil-mottled, chalky(60)

LS; Tan/gray/cream; fine crystalline to dense, foss, blocky + SH; Red/gray (70)

SH; Gray, silty-sandy, gummy + LS; Cream, dense, foss (80)

SH; Gray, silty (90)

LS; Tan, fine crystalline, foss (90)

SH; Gray (3200)

LS; Gray/tan, dense, argillaceous (3200)

LS; Gray/cream, fine crystalline to dense, foss + SH; Gray/dark gray (10)

SH; Red/gray (20)

LS; Tan, fine crystalline, foss, sl dolomitic, chalky, cherty (20-30)

SH; Black (40)

SH; Red/gray, silty-sandy (40)

SS; Gray, fine grained, silty (50)

LS; Cream/tan, fine crystalline, ool, chalky (60)

SH; Gray (70)

LS; Lt gray/cream, fine crystalline, foss, mottled, dolomitic (80)

SH; Gray, calc (90)

LS; Lt gray/gray, fine crystalline, foss, subchalky (3300)

SH; Black (3300)

SH; Red/gray, silty-sandy (10)

+Siltstone; Brown, hard (20)

LS; Cream, fine crystalline to dense, sl dolo (20)

LS; Cream, fine crystalline to dense, subchalky, foss (30)

LS; Cream/lt gray, fine crystalline to dense, ool/foss, sl chalky/cherty + SH; Gray + SS; Gray, fine grained, ang (40)

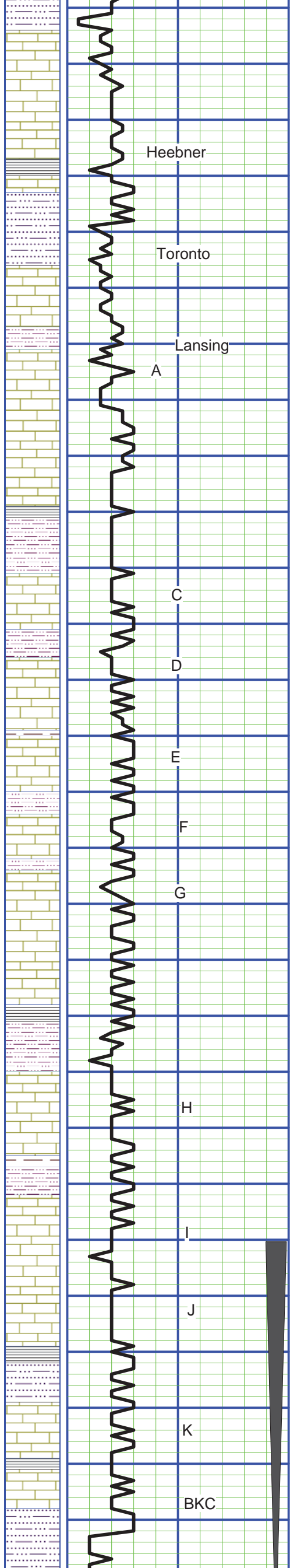
SH; Black (50)

SH; Red/gray, silty-sandy (50)

LS; Tan/cream, fine crystalline to dense, ool + LS; Brown, dense, cherty, chalky + SH; Gray, silty (60)

LS; Cream, fine crystalline to dense, chalky, cherty + SH; Red (70)

VIS 57
WT 8.9
LCM 4#



3400

3450

3500

3550

3600

Heebner

Toronto

Lansing

A

C

D

E

F

G

H

I

J

K

BKC

LS; Cream/gray, fossil mottled, chalky, cherty, trace stain (80)

LS; Lt gray, fine crystalline, sl foss, chalky (90)

LS; Cream. Lt gray, fine crystalline foss, chalky (3400)
SH; Black (3400)

LS; Tan/gray, very fine crystalline, foss (10)

SH; Red/gray, silty + SS; Gray (10)

SH; Red/gray, silty + SS; Tan (20)
SH; Brown, silty (30)

LS; Cream, fine crystalline, foss, w/fair intercrystalline/vug por, cherty, ssfo, lt stain, no odor (30)

LS; Cream, very fine crystalline to dense, foss (30)

SH; Red/gray, silty (40)

LS; Cream, fine crystalline, ool, subgranular, chalky (40)

trace pinpoint por, lt stain, vssfo (50)

LS; Cream, fine crystalline, ool, chalky, sl dolo (50-60)
LS; Gray, dense, foss (70)

SH; Black (70)

SH; Red/gray, silty, sandy (70)

SH; Green (80)

LS; Cream, fine crystalline, foss-subgranular, trace poor fossilcast por, spot dark stain, ssfo(tarry), no odor (80)

LS; Lt gray, fine to med crystalline, foss, sl dol (92)

SH; Red, silty (92)

LS; Cream, fine crystalline, foss, subgran w/chert inclusions, fair intercrystalline, por, lt stain, vssfo, no odor (92/20")

SH; Black + LS; Cream, fine crystalline, foss, subgranular w/poor intergran por, vssfo (3500)

LS; Cream, fine crystalline, ool-granular w/fair intergran por, lt stain, sfo, (10)

LS; Cream, fine crystalline, ool, chalky (20)

SH; Gray (20)

LS; Cream, fine crystalline to dense, chalky (20/20")

LS; Cream/tan, dense, chalky (20/40")

LS; Cream/tan, fine crystalline to dense, foss, chalky(soft) cherty (30)

LS; Cream, dense, foss, chalky, sl cherty (40-50)

LS; Gray, fine crystalline, foss, chalky (60)
SH; Black (60)

SH; Red/gray, silty-sandy (60)

LS; Cream/lt gray, fine crystalline, foss, chalky, cherty (80)

SH; Red/gray, silty (80)

LS; Tan, fine crystalline to dense, mostly dense w/fossil-cast por, ssfo, odor, light stain (90)

LS; Cream, fine crystalline to dense, chalky-decrease in stain (3600)

LS; Tan, fine crystalline, fossiliferous w/fair fossil-cast por, sfo, odor (10)

LS; Gray/tan, fine crystalline, foss (20)

SH; Black (trace 20)

LS; Lt gray/cream, fine crystalline to dense, sl foss, very chalky w/scatt hematite nods(30)

SH; Black (30-40)

LS; Lt gray, fine crystalline, foss-subgranular, chalky (40-50)

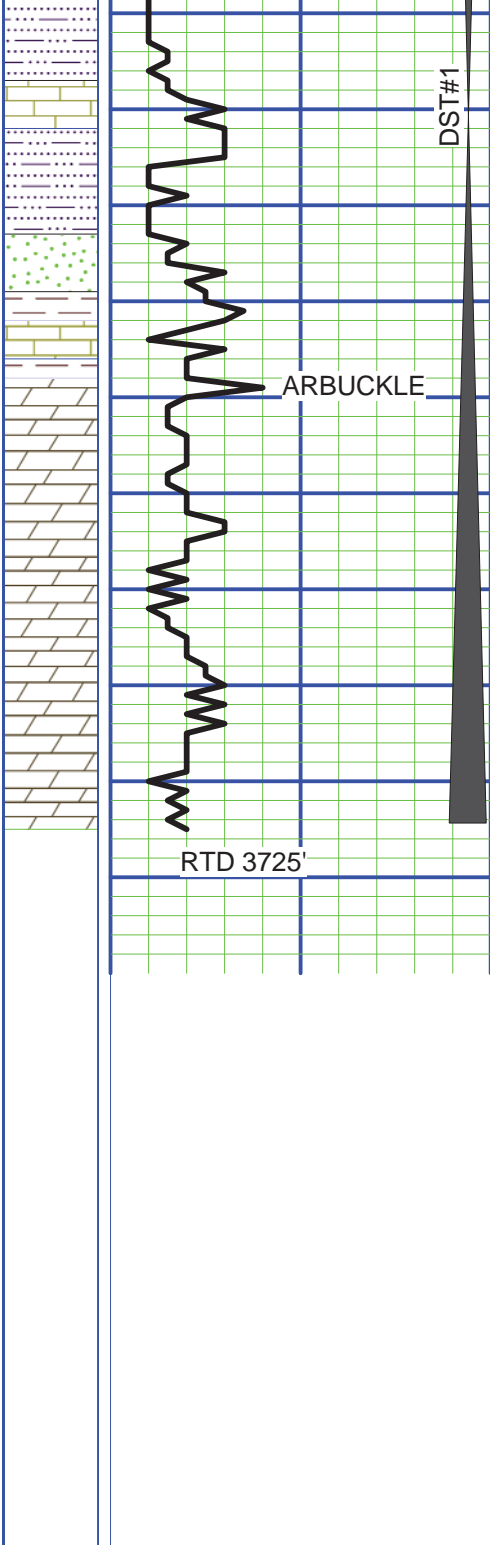
SH; red/green/lt gray (50)

VIS 60
WT 8.9
LCM 4#

VIS 58
WT 8.9
LCM 4#

VIS 68
WT 9.1

DST#1
3580-3725'
30-45-30-45
IF: Weak blow
built to 3 inches
FF: Weak surface blow



SH; Red/gray, sandy (60)

1 1/2" weak surface blow
 built to 1/2 inch
 Recovered: 180' OCM
 5% oil/95% mud
 SIP 943-808#
 FP: 28-53/91-114#

LS; Lt gray/cream, fine crystalline, foss, trace stain (60-70)
 SH; Red/green, sandy (70)

trace SS; Gray, fine grained, subrounded, well-cem (80)

LS; Cream, fine crystalline, sl foss, chalky, blocky (90)
 increase Chalky LS (90)

SS; Gray, fine to medium, subangular to subrounded, well cemented w/ssfo, no odor + SH; Dark gray, silty, sandy (90)

Dolo; Yellow/pink, medium crystalline, sucrosic, tight, cherty (brick red chert + smoky ool chert), trace poor vug por, vssfo (tarry), no odor (3700)

Dolo; Cream, medium to coarse crystalline, suc w/poor intercrystalline porm show dead oil (10)

Dolo; Pink/marron, coarse crystalline, sucrosic, tight (20)

DRIFT SURVEY
 220' 1/4 DEG.
 1813' 3/4 DEG.
 3725' 1 DEG

Dol; Pink/tan, fine to med crystalline, fair vug por (barren)(25)