

GEOLOGIST'S REPORT

DRILLING TIME AND SAMPLE LOG

BACH OIL PRODUCTION

WELL: BECKER #1

**LOC.: 1420' FSL & 1720' FWL
SEC. 30-4-20W**

**PHILLIPS COUNTY, KANSAS
API: 15-147-20642-00-00**

**DRILLING CONTR.: MURFIN RIG #16
SPUD: 04-13-11 COMP: 04-17-11
MUD UP: 2800' TYPE MUD: CHEM.
DRILL TIME: 2900-RTD
RTD: 3510' LTD: 3503' (due to slough)
SAMPLES SAVED: 2900'-RTD
GEOLOGIST: ROBERT J. PETERSEN**

ELEVATION

**KB: 2043'
GL: 2038'
LOG MEASURED
FROM: KB**

SURFACE CASING

8 5/8" surface csg.
Set @220' KB.
Cem. w/160sx Common,
3% CC, 2% Gel.

PRODUCTION CASING

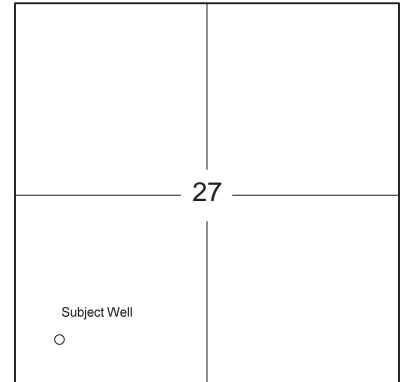
5 1/2" Set @3510'
W/ 600 SX Cem.

WELL LOG SURVEYS

RAG

ELECTRIC LOG TOPS

FORMATION	DEPTH	DATUM	POSITION
Stone Corral	1645	+398	-14
Base Stone Corral	1677	+366	-15
Topeka	3039	-996	-21
Heebner	3229	-1186	-23
Toronto	3257	-1214	-23
Lansing	3275	-1232	-25
Base Kansas City	3467	-1424	-24



REFERENCE WELL:

NCRA
Becker #1
SW SW SW 31-4-20W
2070 KB

DAILY REPORT

@7:00 A.M.

4-13-11 MIRU, SPUD
4-14-11 680' Drilling
4-15-11 2405' Drilling
4-16-11 3230' Drilling
4-17-11 3510' RTD TOH for Log

REMARKS AND RECOMMENDATIONS

Production casing has been run to further test this well for commercial production.

Respectfully submitted,

Robert J. Petersen April 18, 2011

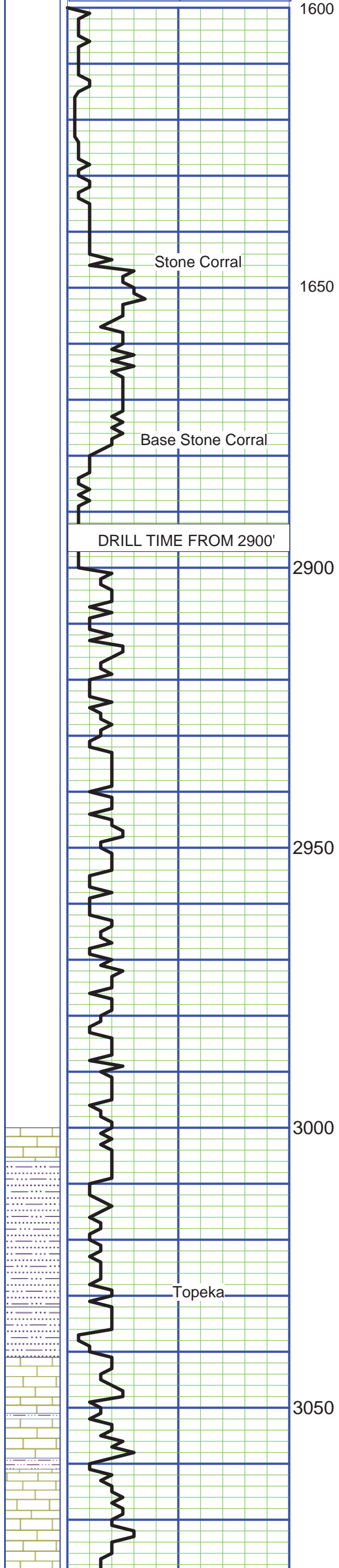
DRILL TIME MIN./FT

0

5

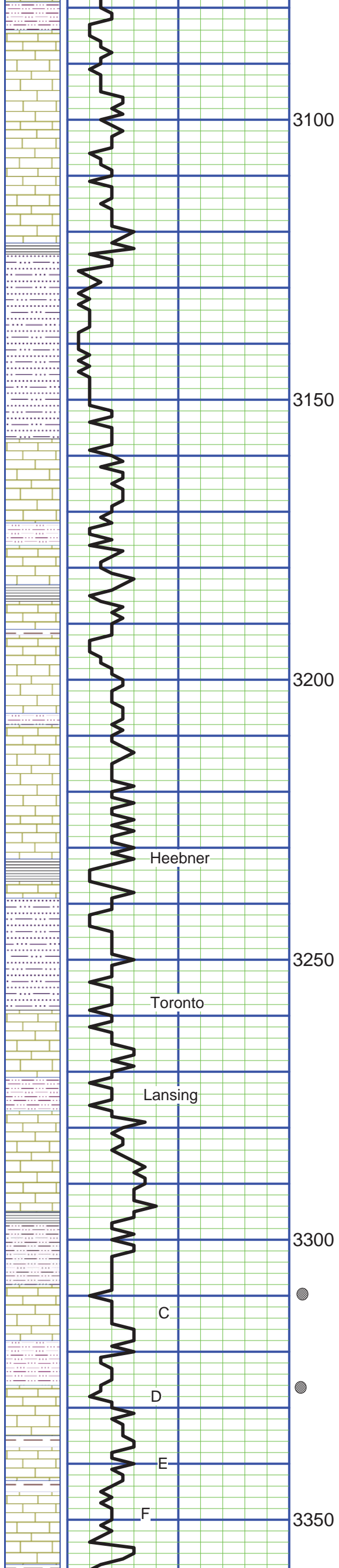
10

NOTE: DST #1 WAS ATTEMPTED
 BUT TOOL COULD NOT GET PAST
 LOWER DAKOTA TRIPPING IN FOR TEST.



SAMPLE DESCRIPTION

- LS; Cream/gray, fine crystalline, chalky + SH; Gray + SS; Micaceous (10)
- LS; Cream/gray, fine crystalline, sl foss, chalky + SH; Gray (20)
- LS; Gray, dense + LS; Cream/tan, fine crystalline, foss (30)
- LS; Gray, dense + LS; Cream, dense, chalky + SH; Gray (40)
- LS; Cream, fine crystalline to dense, foss, chalky + SH; Gray (50)
- LS; Cream/gray, fine crystalline, foss + SH; Gray/trace SS; Gray, fine grained (60)
- SS; Gray, fine grained, well cemented, micaceous (70)
- SS; Cream, fine grained, well cemented + LS; Cream, fine crystalline, foss (80)
- LS; Gray, fine crystalline, foss + SH; Gray, calcareous, sandy (90)
- LS; Gray, fine crystalline to dense + SH; Gray, silty-sandy (3000)
- LS; Gray/cream, fine crystalline, chalky + SH; Gray (10-20)
- SH; Red/gray, silty-sandy (30)
- SS; Graym fine grained (30-40)
- SS; Cream, fine grained, well-cem to friable (40)
- LS; Gray/brown, fine crystalline, foss (50)
- SH; Dark gray (60)
- LS; Grayy/cream, fine crystalline, foss, granular (60)
- LS; Cream/gray, fine crystalline, foss + SH; Gray, trace SS Wh/clear, fine graine, subrounded (70)
- SH; Red/gray + SS; Clear/white, fine grained, subrounded (80)
- LS; Cream/lt gray, fine crystalline to dense, foss (90)
- SS; Gray/dark gray, fine grained, subangular to angular, well-cem, trace Coarse Sand, Tan (90)



LS; Cream/gray, fine crystalline, foss, very chalky (3100)

3100

LS; Cream, fine crystalline, foss, subgranular, chalky, cherty (blocky cream/tan) (10-20)

LS; Cream, fine crystalline, foss-granular, dolomitic, cherty, chalky + SH; Gray/red, silty, sandy (30)

SH; Black (40-50)

Vis 64
Wt 8.7
LCM 1.5#

SS; Gray, fine grained, calcareous + LS; Cream/tan, fine crystalline, chalky (50-60)

3150

SH; Red, silty (70)

LS; Cream, fine crystalline, foss, chalky (70)

LS; Cream/gray, fine crystalline, foss, chalky (80)

SH; Red/gray, silty-sandy (90)

LS; Cream, fine crystalline, foss (3200)

SH; Black (3200)

Vis 64
Wt 8.7
LCM 1.5 #

LS; Cream/lt gray, fine crystalline, foss, chalky (10)

3200

SHORT TRIP
3200'

LS; Lt gray, fine crystalline, very foss-subgranular, mottled, chalky (20)

SH; Red/gray (20)

LS; Cream/lt gray, fine crystalline, foss-subgranular, chalky-cherty (30)

LS; Gray, fine crystalline to dense, foss, chert (40)

Heebner

SH; Black (flood 50)

LS; Gray/tan, fine crystalline, foss (50)

SH; Red/gray/green, sandy (60)

3250

SH; Red, silty-sandy + SS; Gray, fine grained, well-cemented, friable (70)

Toronto

LS; Cream, fine crystalline, foss, chalky (70)

LS; Cream/white, fine crystalline, foss, chalky, sl dolomitic, cherty w/barren poor fossil-cast por, poss trace dead stain (80)

Lansing

SH; Red/gray, silty (90)

LS; Cream/gray, fine crystalline, ool-granular, chalky (90)

LS; Cream, fine crystalline to dense, ool, cherty (3300)

LS; Cream/lt gray, fine crystalline, foss, chalky (10)

SH; Black (trace 10)

3300

SH; Red/gray, silty (20)

Attempted DST #1
3285-3310'

LS; Cream, fine crystalline, foss-subgranular w/fair to good intergran/fossil-cast por, ssfo, faint odor, light med brown stain on dry (20/20")

LS; Cream, fine crystalline, foss, chalky-cherty (20/40")

SH; Red (20/40' -00)

C

LS; Cream, fine crystalline, foss-subgranular, w/trace fossilcast por, tarry oil, no odor (40)

SH; Black (40)

LS; Cream, fine crystalline, foss, w/poor fossil-cast por, partially barren, trace stain (50)

SH; Red (50)

D

E

LS; Cream, fine crystalline, oolitic-granular, chalky (60)

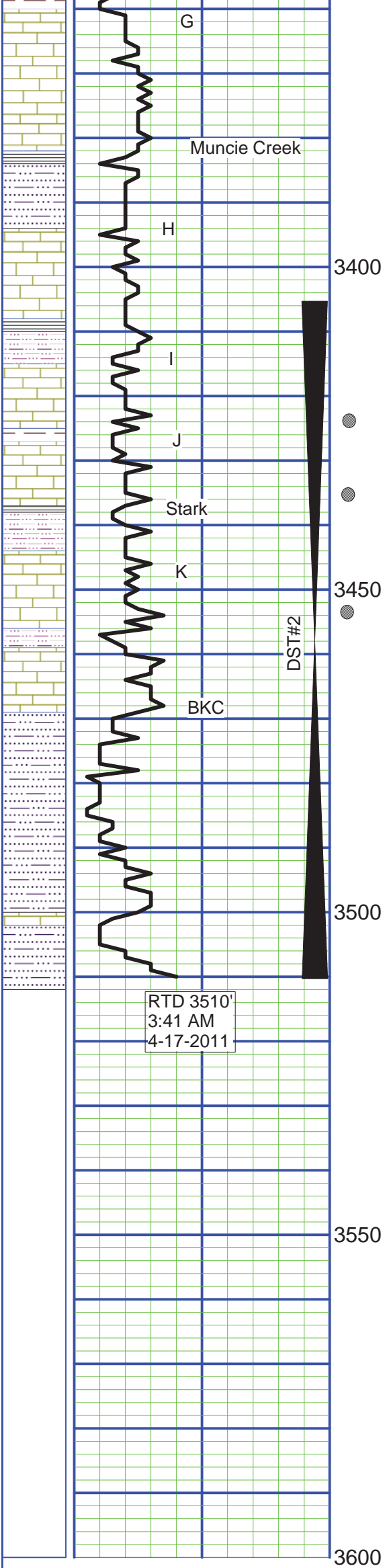
Vis 57
Wt 9.0

F

3350

LS; Cream, fine crystalline, oolitic, dolomitic, chalky, trace dead stain (70)

SH; Red, silty (70)



SH; Red, silty (10)

LS; Cream, fine crystalline, foss, dolo, chalky (80)

LS; Cream/lt gray, dense, cherty, sl dolo, chalky (3390-3400)

Muncie Creek

SH; Black (3400)

SH; Red/gray, silty-sandy (10)

H

3400

LS; Cream/lt gray, fine crystalline, foss, sl dolo, chalky (10)

LS; Gray, fine crystalline to dense (20)

SH; Red/gray, silty-sandy (30)

LS; Cream, fine crystalline to dense, foss w/poor fossil-cast por, sfo, dark (black) sat on dry, ft odor (30-40)

SH; Red/gray (40)

J

Stark

LS; Cream/lt gray, fine crystalline to dense, foss, trace ppt por, spot sat, vssfo (50)

SH; Black (60)

SH; Red (60)

K

3450

LS; Cream/lt gray, fine crystalline, foss, chalky, tr ppt por, tr stain, vssfo (70)

SH; Red/gray, silty (70)

LS; Cream, fine crystalline, ool-granular, chalky (90)

SH; Red/gray, silty-sandy (90)

BKC

SH; Red, calcareous, sandy (3500)

SH; Gray (10)

LS; Cream/tan, fine crystalline, foss, chalky (10)

SH; Red, silty-sandy + LS; Cream, dense, chalky + Chert; Gray, dense (3310/30")

Vis 63
Wt 9.1
LCM 4#

DST #2
3405-3510'
45-45-45-60"
IF: 9.75" in 45 min
FF: 5 in 45 min
Recovered:
80' MCO
120' OCM
SIP: 1020-1012#
FP: 24-85/87-108#

VIS 64
WT 9.1
LCM 4#