

GEOLOGIST'S REPORT

DRILLING TIME AND SAMPLE LOG

BACH OIL PRODUCTION

WELL: LEGLEITER #6

**LOC.: 710' FSL & 860' FWL
SEC. 27-15-19W**

**ELLIS COUNTY, KANSAS
API: 15-051-26125-00-00**

**DRILLING CONTR.: MURFIN RIG #16
SPUD: 03-27-11 COMP: 04-04-11
MUD UP: 2800' TYPE MUD: CHEM.
DRILL TIME: 2900-RTD
RTD: 3645' LTD: 3643'
SAMPLES SAVED: 2900'-RTD
GEOLOGIST: ROBERT J. PETERSEN**

ELEVATION

**KB: 2010'
GL: 2005'
LOG MEASURED
FROM: KB**

SURFACE CASING

**8 5/8" surface csg.
Set @1225' KB.
Cem. w/450sx Common,
3% CC, 2% Gel.**

PRODUCTION CASING

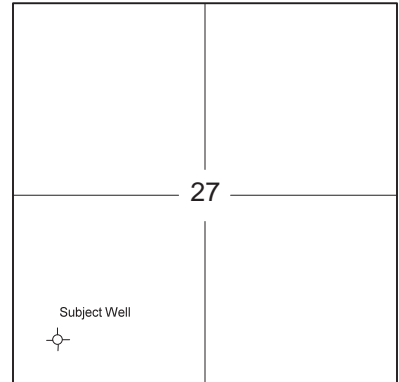
D & A

WELL LOG SURVEYS

RAG

ELECTRIC LOG TOPS

FORMATION	DEPTH	DATUM	POSITION
Stone Corral	1220	+790	-14
Base Stone Corral	1259	+751	-19
Topeka	2967	-957	-8
Heebner	3253	-1243	-5
Toronto	3271	-1261	-2
Lansing	3300	-1290	-8
Base Kansas City	3544	-1534	-2
Conglomerate	3600	-1590	-19



REFERENCE WELL:

Herman Kaiser
Randa #1
NE NE NE
33-15-19W
EI 2042 KB

DAILY REPORT

@7:00 A.M.

**3-28-11 MIRU
3-29-11 SPUD
3-30-11 1055' Drilling
3-31-11 1250' Drilling
4-1-11 2480' Drilling
4-2-11 3225' Drilling
4-3-11 3365' Drilling
4-4-11 3580' Drilling**

REMARKS AND RECOMMENDATIONS

Due to the structural position and poor DST results the operator plugged and abandoned this well.

Respectfully submitted,

Robert J. Petersen

DRILL TIME MIN./FT

SAMPLE DESCRIPTION

0 5 10

2900

LS; Cream/gray, dense, foss + SH; Gray (10)

LS; Cream/lt brown, fine crystalline to dense, foss + SH; Gray + SS; Gray, silty (20)

LS; Cream/tan, fine crystalline, foss, chalky (30)

LS; Cream, fine crystalline to dense, foss, cherty + SH; Gray (40)

LS; Gray, dense, foss + SH; Gray (50)

LS; Gray, fine crystalline to dense, foss + SH; Gray + SS; Gray (60)

2950

LS; Tan, dense, foss, trace stain (70)

SH; Gray, soft, sandy (80-90)

Topeka

LS; Cream, dense, foss + LS; Brown, fine crystalline + LS; Brown, fine crystalline (90)

LS; Cream,dense, foss, chalky, sl cherty + SH; Gray (3000)

3000

LS; Cream/brown, dense, sl foss + SH; Gray (10)

LS; Cream/gray, fine crystalline to dense, chalky-cherty + SH; Gray + SS; Gray, fine grained, angular (20)

LS; Gray, fine crystalline, foss, very chalky, soft, trace stain (30)

LS; Tan, fine crystalline, sl dolo, ool in-part, chalky, trace stain (40)

LS; Tan/gray, fine crystalline to dense, foss, sl dolo, chalky + SH; Gray (40/20")

LS; Tan/gray, fine crystalline, foss, mottled-in part + SH; Gray (50)

3050

LS; Gray/tan, dense, chalky (60-70)

SH; Red/gray (70)

LS; Cream/gray, fine crystalline to dense, chalky (80)

LS; Cream/gray, fine crystalline, foss, chalky, trace stain (90)

LS; Cream/gray, fine crystalline, foss, chalky, cherty (3100)

3100

LS; Cream/tan, fine crystalline, sl foss, chalky-cherty (10)

SH; Black (20)

SH; Red/green-gray, silty-sandy (30-40)

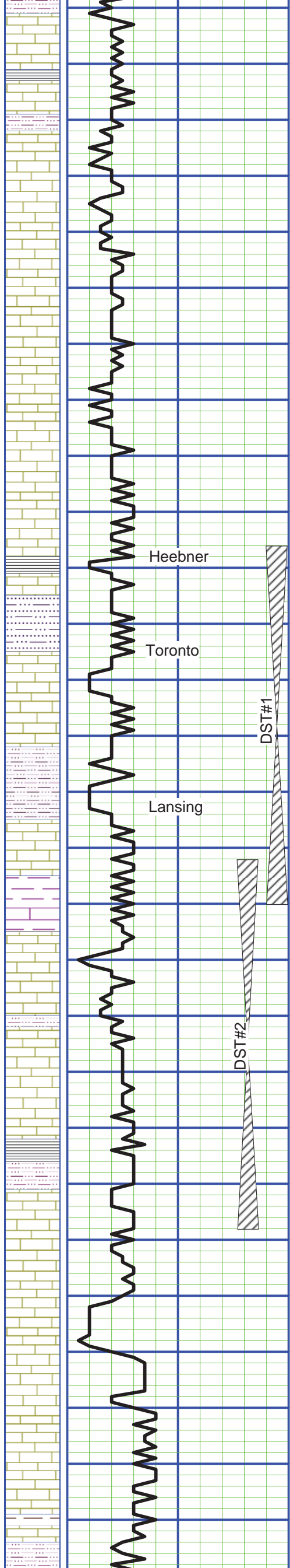
LS; Cream/tan, fine crystalline to dense, trace light stain (40)

SH; Gray (50)

LS; Cream/lt gray, fine crystalline to dense, sl dol (60)

3150

LS; Cream/gray, fossil-mottle, chalky, trace stain (70)



3200

3250

3300

3350

3400

Heebner

Toronto

Lansing

DST#1

DST#2

SH; Red/gray (70)

LS; Cream/tan, fine crystalline, foss, sl chalky (80)

SH; Black (90)

SH;Red/gray (3200)

LS; Cream, fine crystalline, foss, chalky, lt stain, sfo, odor, ppt por (3200)

+LS; Brown, dense (04/20")

LS; Gray, fine crystalline to dense, dolo, chalky, ssfo, odor (04/40")

LS; Cream/tan, fine crystalline, foss, chalky, cherty, trace stain + SH; Gray (20)

LS; Cream/tan, fine crystalline to dense, foss, chalky, cherty (30)

LS; Cream/lt gray, fine crystalline to dense, foss, chalky, cherty, trace stain, fair vug por, lt brown stain (40)

LS; Cream, fine crystalline to dense, foss, chalky + SH; Green (50)

LS; Cream/lt gray, fine crystalline, ool, trace poor ppt por, lt stain (50/30")

LS; Cream/tan, fine crystalline to dense, foss, cherty, chalky, trace vug por, lt stain (60)

SH; Black (700)

LS; Lt gray, dense, sl foss (80)

SH; Red/green-gray, silty-andy (80)

LS; Cream, fine crystalline to dense, foss, trace stain, poor vug por, lt stain, vssfo (black)(90)

LS; Tan, fine crystalline, ool, dolomitic w/fair inter-ool por, sfo, odor (3300)

LS; Tan/cream, fine crystalline to dense, foss, decrease dolo (07)

SH; Gray, sandy (07/20")

LS; Cream/lt gray, fine crystalline to dense, dolo, foss, cherty (black-foss) w/ppt por. Ssfo, lt odor (10) increase odor (20) light stain on dry

SH; Red/gray, silty + LS; Gray/cream, fine crystalline, foss, chalky (20-40")

SH; Red/green-gray, silty + LS; Gray, fine crystalline, foss, sl dolo, tr ppt por, lt stain (30)

LS; Cream, fine crystalline, oomoldicm sl dolo, chalky, soft (40)

LS; Cream, fine crystalline, oomoldic w/fair moldic por, lt stain, sfo, odor, light to dark stain on dry (45)

LS; Cream/graym fine crystalline, oolitic, mottled, cahky (45/20")

SH; Gray/marron (45/20")

LS; Cream/gray, fine crystalline, foss, chalky (45/40")

LS; Cream/gray, fine crystalline, foss, oomoldic/ool in-part, w/fair oomoldic por, stain, odor, ssfo (50)

LS; Cream/gray, fine crystalline, ool, sl dolo, cherty + SH; Gray (60)

LS; Cream/lt gray, fine crystalline, foss, chalky, lt stain (65)

LS; Cream, fine crystalline, oom, sl chalky, oom, w/trace intercrystalline por, sfo (brown), odor, gas bubbles, lt gray to brown stain on dry (65/40")

SH; Black (65/40")

SH; Red/gray (77)

LS; Cream/white/tan, fine crystalline, oolitic-granular w/trace poor inter-ool & moldic por, dark stain, odor, ssfo (77/20")

LS; Lt gray, fine crystalline, sl dolo w/scatt, fossil-cast por, ssfo (bleeding) odor (77/40")

LS; Cream/lt gray, fine crystalline, ool, chalky, trace stain (90)

LS; Cream, fine crystalline to dense, oomoldic, chalky, cherty (3400)

LS; Cream, fine crystalline, oomoldic w/trace dark stain, odor, ss tarry oil (10)

LS; Lt gray/cream, fine crystalline to dense, foss, frac por, ssfo, dark stain (20)

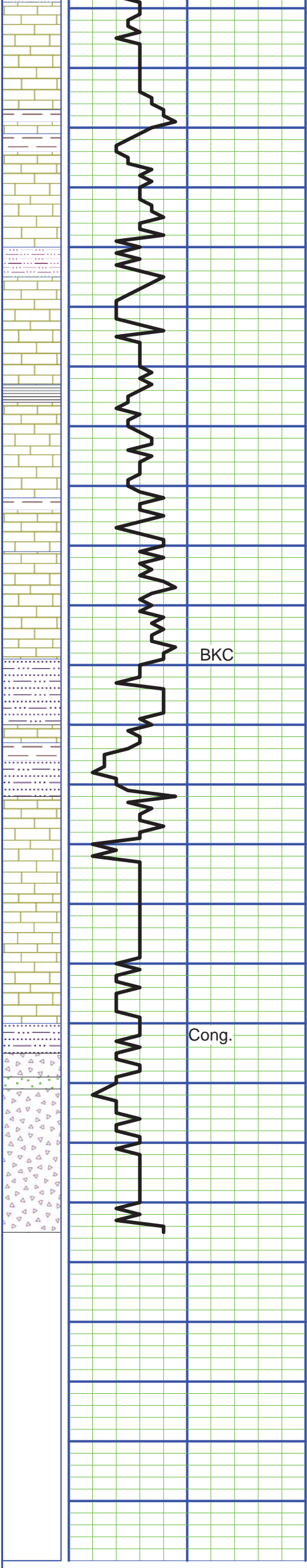
LS; Cream, fine crystalline, ool, chalky, sl cherty + SH; Dark gray/black (30)

LS :Cream, fine crystalline, chalky + SH; Maroon/gray (40)

LS; Cream, fine crystalline, foss, sl dolomitic, chalky (50)

DST #1
 3256-3320'
 30-45-30-45"
 IFF: Weak building to 1 1/2 "
 FFP: Weak steady surface blow
 Recovered: 95' Water
 60,000 ppm chlorides
 SIP: 1022-982#
 FP: 18-44/49-64#

DST #2
 3312-3378'
 30-45-30-45"
 IFF: Weak building to 1"
 FFP: Weak steady surface blow
 Recovered:
 35' Drilling Mud
 20' Water
 80,000 ppm chlorides
 SIP: 454-436#
 FP: 20-35/36-42#



3450

○

3500

3550

BKC

3600

Cong.

○

3650

3700

LS; Cream, fine crystalline, foss, trace frac por, lt stain, vssfo, odor, trace dead flakes-tarry oil (60)

SH; Red/gray (70)

LS; Cream, fine crystalline to dense, ool, chalky (80)

LS; Cream, fine crystalline, sl ool, trace poor ppt por, trace stain, vssfo whe crushed (90)

SH; Dark gray (90)

LS; cream/lt gray, fine crystalline to desen, chalky, sl cherty, trace ppt por, vssfo when crushed (94)

○

LS; Cream/lt gray, fine crystalline to dense, chalky, trace stain + SH; Dark gray (94/20")

LS; Cream, fine crystalline, w/intercrystalline por, trace black stain (94/40"-3510)

SH; Black (3510)

3500

SH; Red/gray (20)

LS; Cream/tan, fine crystalline, ool, chalky (20)

LS; Cream/tan, fine crystalline, ool, sl chalky/cherty (30)

SH; Gray (30)

LS; Cream/tan, fine crystalline, chalky, cherty, trace stain, poor ppt por + Sh; Gray (40)

SH; Black (50)

SH; Gray, silty (50)

3550

LS; Cream, fine crystalline, ool, cherty (60)

SH; Red/gray, silty-sandy (70)

LS; Cream, fine crystalline (70)

SH; Red/gray, silty-sandy (80)

LS; Cream, fine crystalline, ool + Chert; Orange, sharp (80)

SH; Red/gray (90)

LS; Cream/gray, dense, chalky (90)

LS; Cream/lt brown, fine crystalline, ool, chalky-cherty, trace stain + SH; Gray/maroon (3600)

Chert; Gray/cream/gray, angular + LS; Gray, dense + SH; Red/gray, silty (10)

3600

+LS; Cream, fine crystalline, foss, chalky-abundant Chert, trace stain + SH; Dark gray/gray, sandy (18)

Cong.

○

Chert; White/orange, angular, foss, lt stain, vssfo(brown), no odro + LS; Lt gray, dense, chalky-chalky soft (18/20")

+SH; Gray, silty-sandy +SS; Clear, subangular-subrounded, medium, well-cem to loose, few loose grains, ssfo, faint odor (18/40")

SS; Clear, subangular-subrounded, medium, well-cem to loose, few loose grains, ssfo, faint odor (30)

LS; Cream/lt gray, fine crystalline to dense, foss, sl cherty + SH; Gray, trace SS; Clear, subrounded, coarse, well-cem, traces stain (40)

Chert; White/gray, angular + Sand; Clear, coarse, subrounded, well-cem w/ssfo (45)

slight increase Sand cluster, tight, ssfo (45/30")

+ SH; Pale green/black, trace reworked dolo (45/60")

3650

