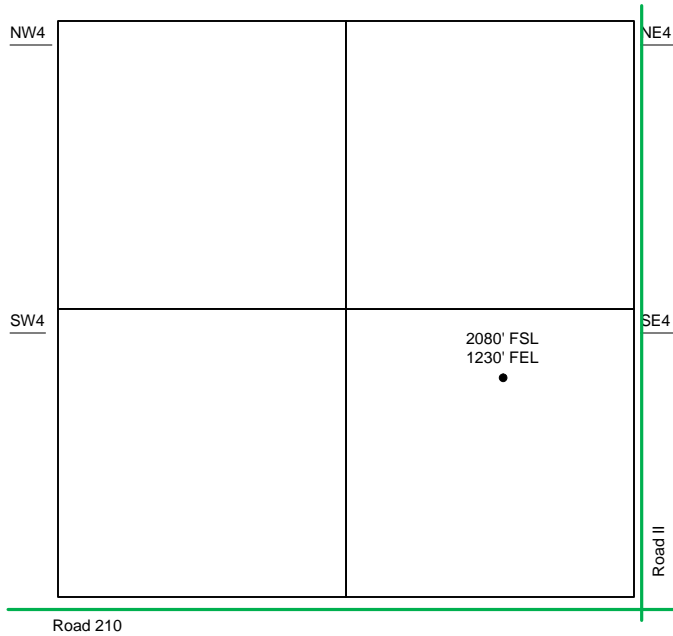
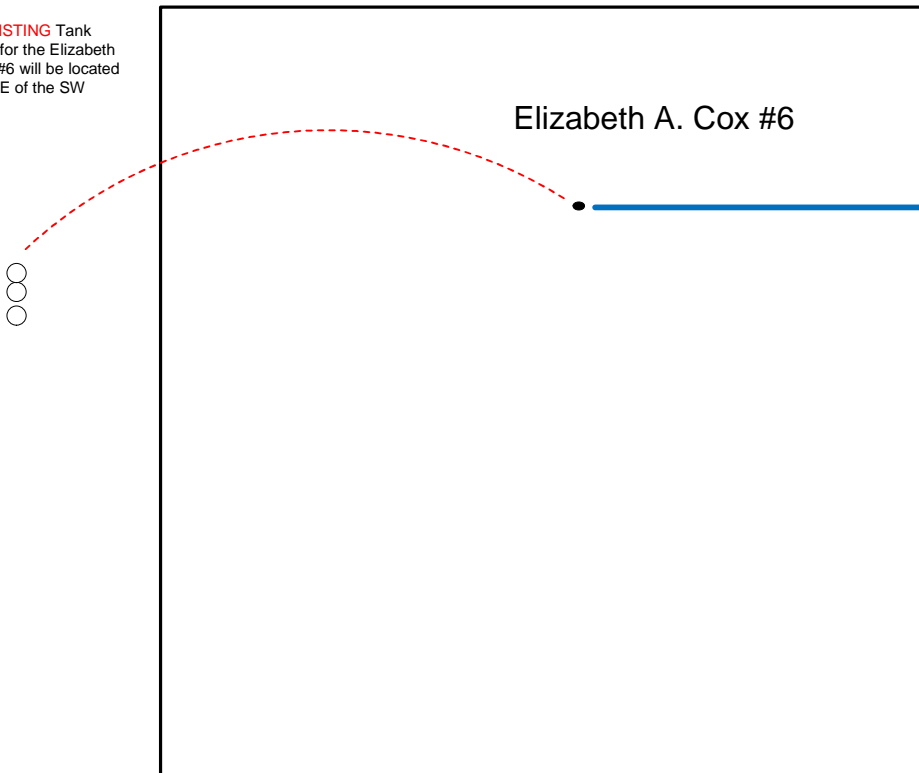


Proposed Plan of Construction  
 Elizabeth A. Cox #6  
 Sec 8-T30S-R33W  
 Haskell County, KS



Sec 8 – T30S – R33W

The **EXISTING** Tank Battery for the Elizabeth A. Cox #6 will be located in the NE of the SW quarter.



NE/4

- Well Location
- Lease Roads
- - - Proposed Pipeline
- Tank Battery Equipment
- Power Lines
- - - Existing Pipeline

Detail of  
 SE4 Sec 8-T30S-R33W

Note-Drawing **Not** to Scale