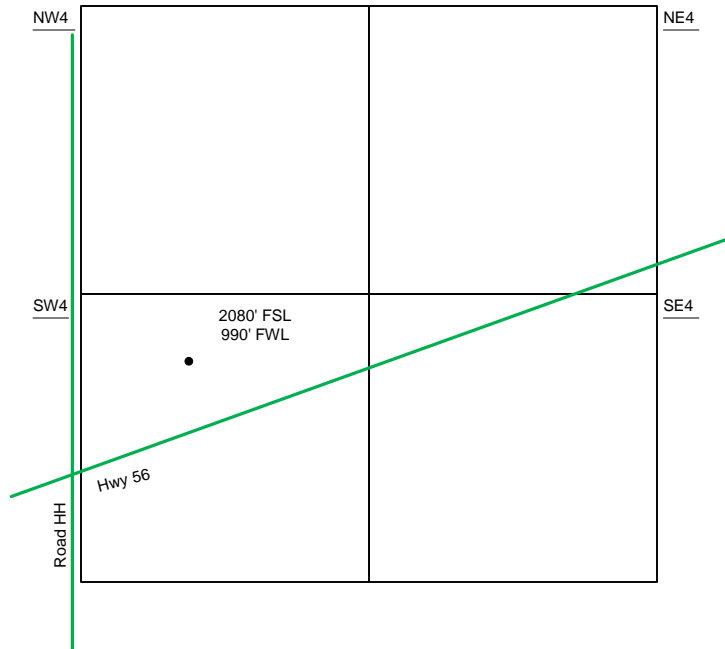
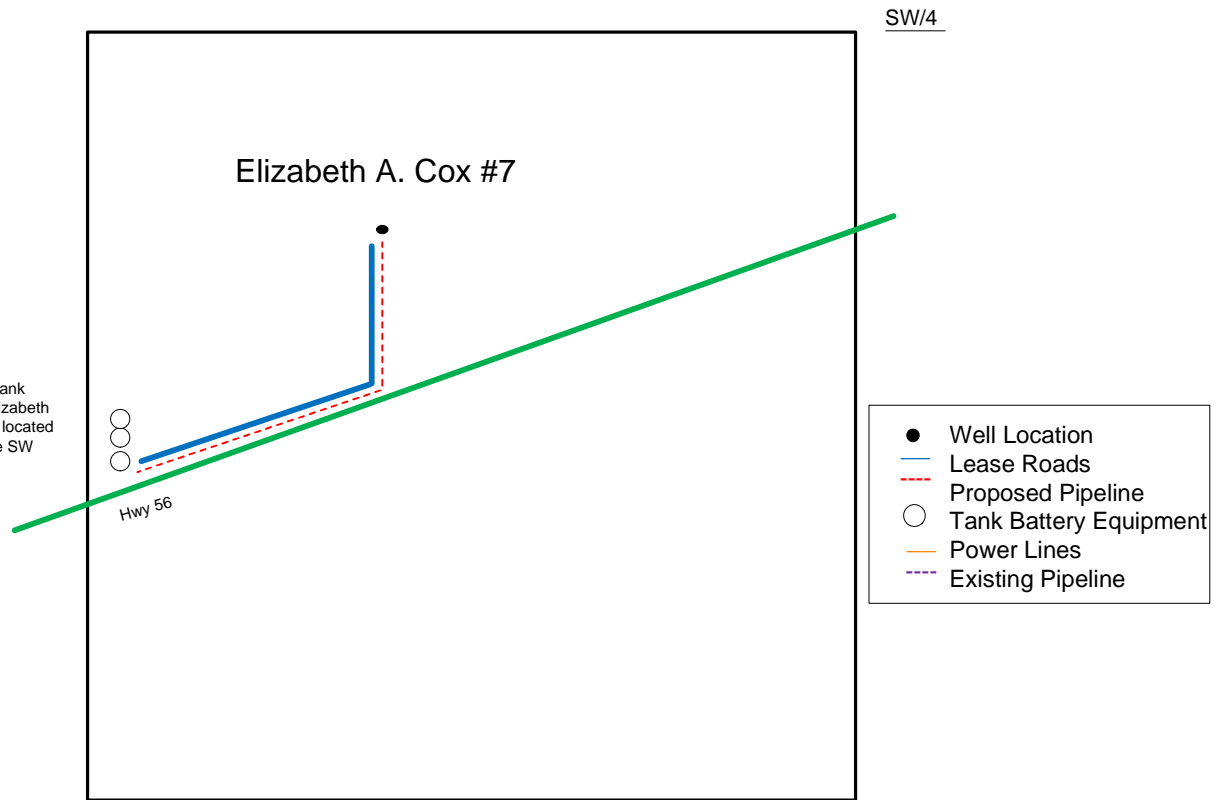


Proposed Plan of Construction
 Elizabeth A. Cox #7
 Sec 8-T30S-R33W
 Haskell County, KS



Sec 8 - T30S - R33W



The **EXISTING** Tank Battery for the Elizabeth A. Cox #7 will be located in the West of the SW quarter.

Detail of
 SW4 Sec 8-T30S-R33W

Note-Drawing **Not** to Scale