

ADVANTAGE ELEVATIONS

OIL FIELD SURVEYORS

BOX 8604 - PRATT, KS 67124
(620) 672-6491

55101
INVOICE NO.

N-10 EXPLORATION LLC
OPERATOR

2
NO.

Medicine River Ranch D
FARM

Barber
COUNTY

10 34s 11w
S T R

2340' ESL & 1650' FWL
LOCATION

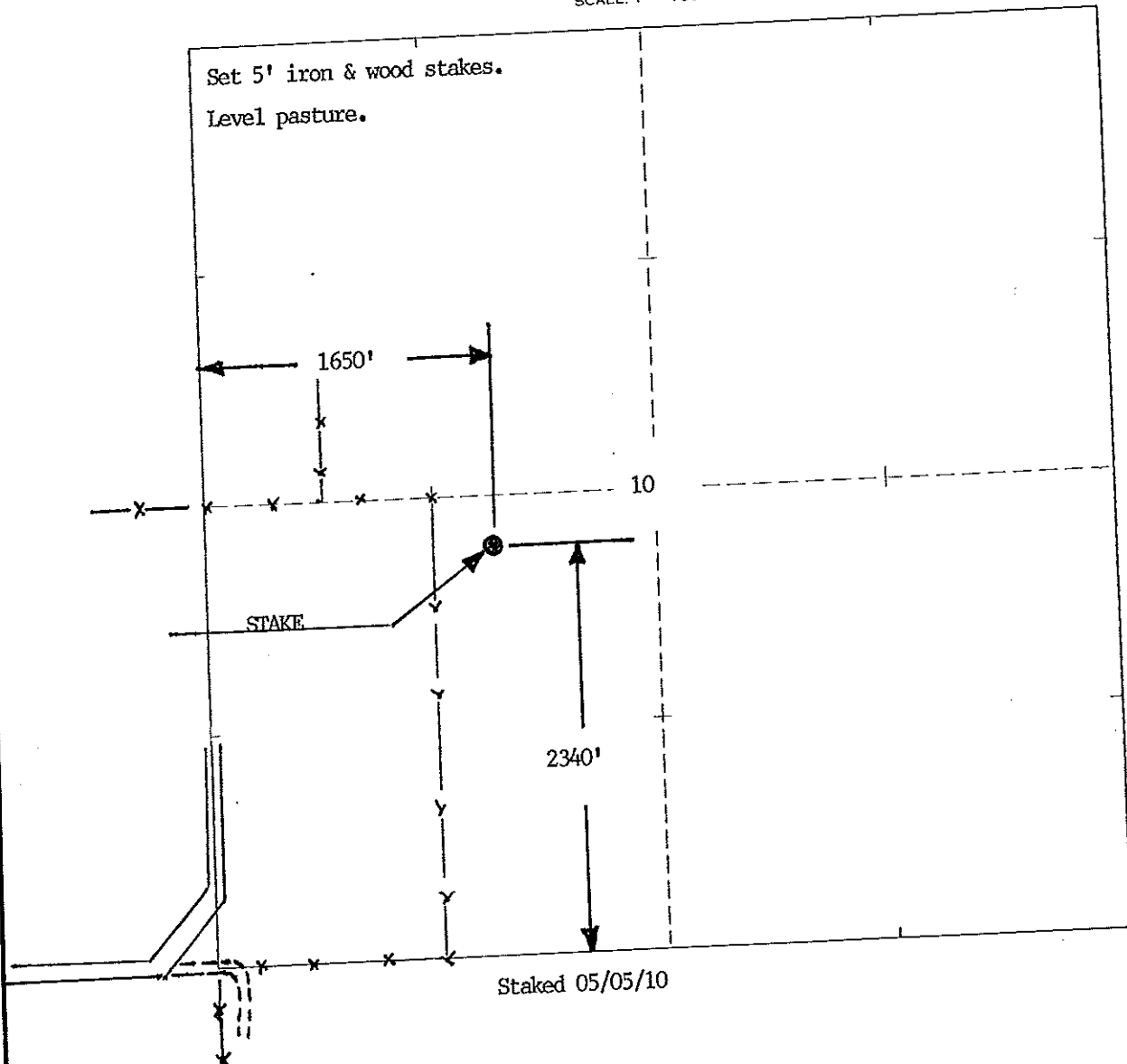
ELEVATION: 1340' gr

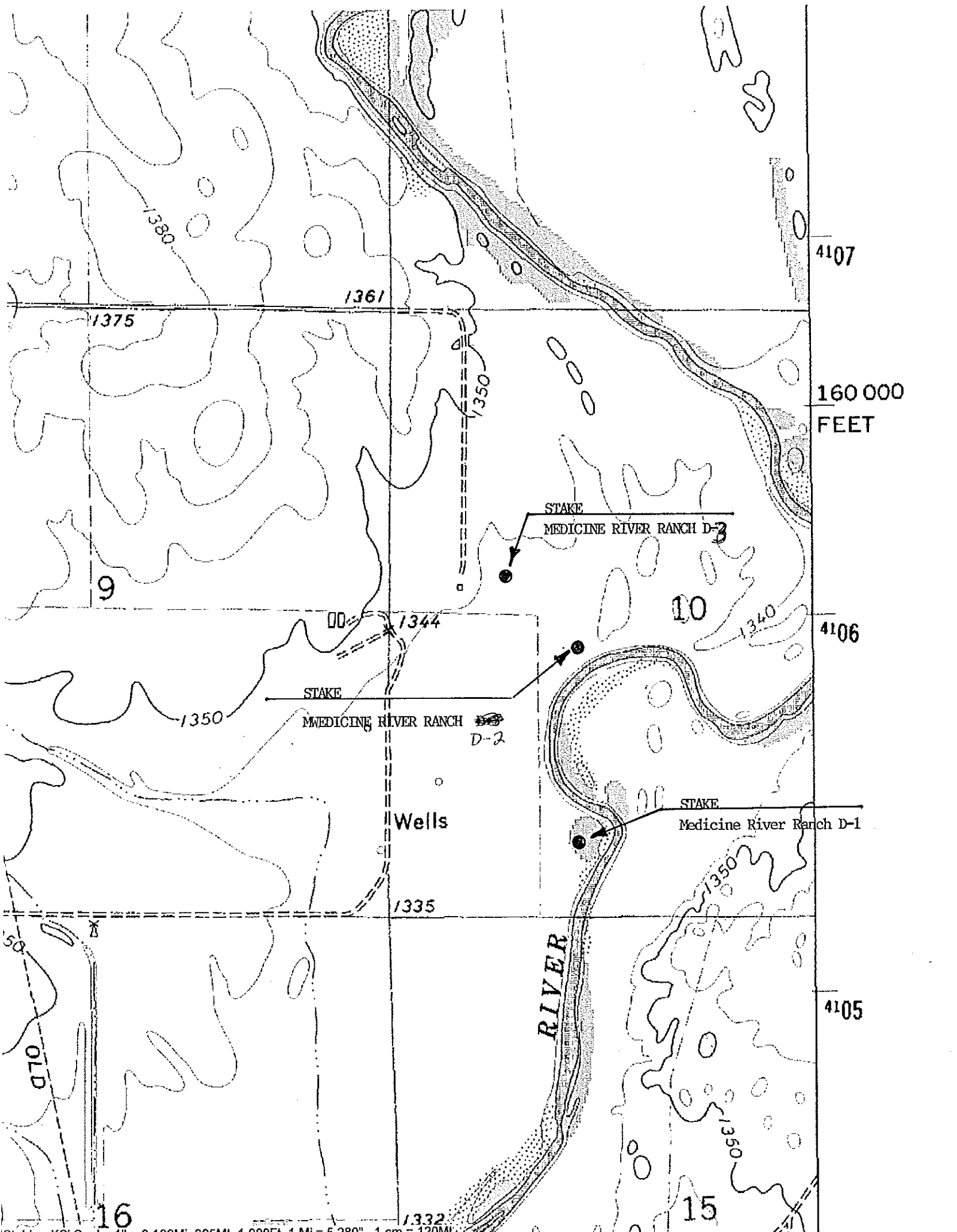
N-10 EXPLORATION LLC
PO Box 195
Attica KS 67009-0195



AUTHORIZED BY: Tim

SCALE: 1" = 1000'





Scale: 1" = 0.180MI 305MI 1 000Ft 1 Mi = 5 280". 1 cm = 120MI