

REMARKS

This well ran 4 to 10 feet lower on the Lansing top than the reference wells.
 Results of drill stem test #1 warranted the cementing of production casing to further
 test the well. The zones from 3493'-3495' and 3462'-3465' should be tested.

Richard B. Bell
 5-12-11

7502

LEGEND

- 

Anhydrite
- 

Salt
- 

Sandstone
- 

Shale
- 

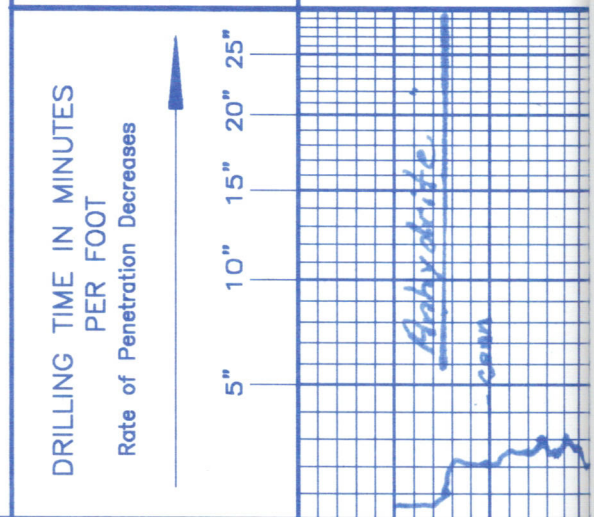
Carb sh
- 

Limestone
- 

Ool. Lime
- 

Chert
- 

Dolomite



DEPTH

1870

LITHOLOGY

SAMPLE DESCRIPTIONS

OIL SHOWS

REMARKS

LOG 7710