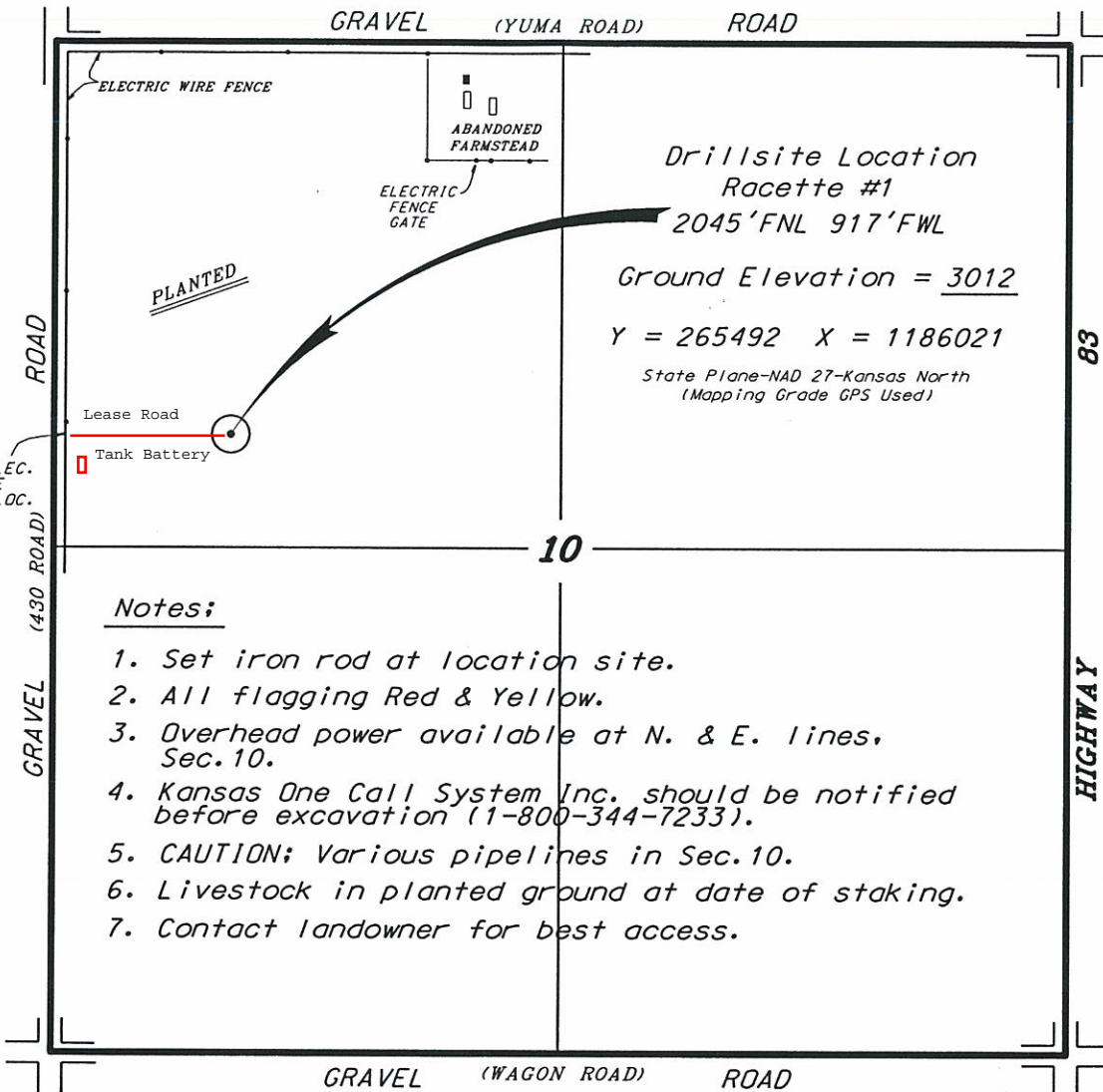
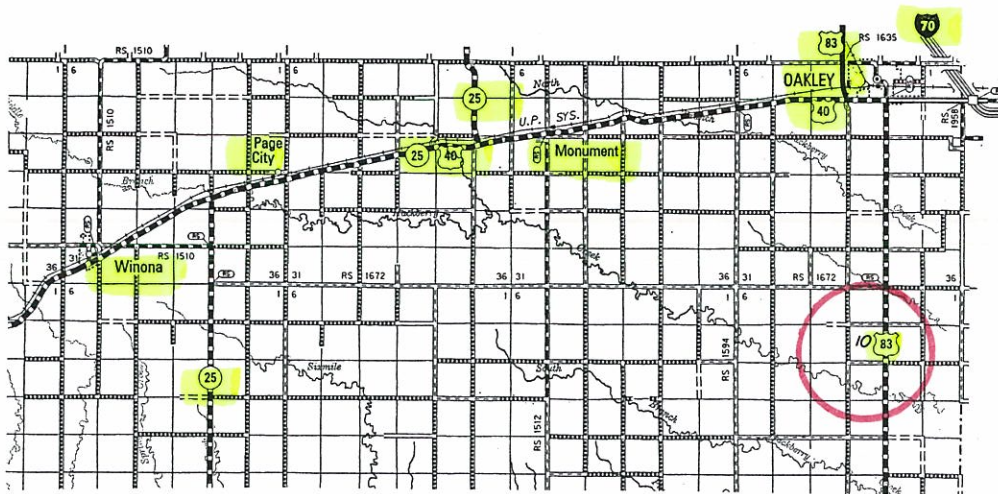


NEW GULF OPERATING, LLC
 RACETTE LEASE
 NW.1/4, SECTION 10, T12S, R32W
 LOGAN COUNTY, KANSAS



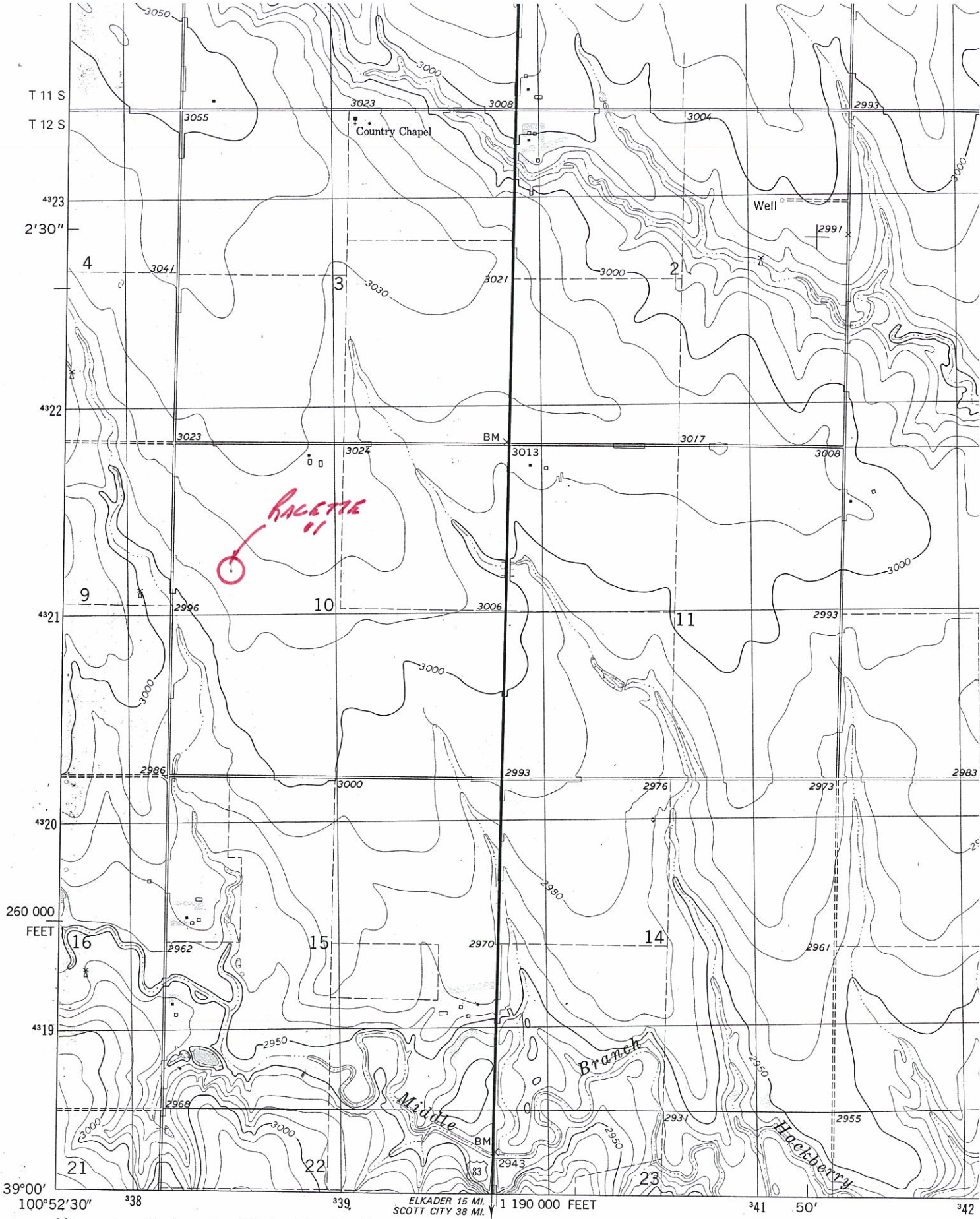
Notes:

1. Set iron rod at location site.
2. All flagging Red & Yellow.
3. Overhead power available at N. & E. lines, Sec.10.
4. Kansas One Call System Inc. should be notified before excavation (1-800-344-7233).
5. CAUTION: Various pipelines in Sec.10.
6. Livestock in planted ground at date of staking.
7. Contact landowner for best access.



* Controlling data is based upon the best maps and photographs available to us and upon a regular section of land containing 640 acres.
 * Approximate section lines were determined using the normal standard of care of oilfield surveyors practicing in the state of Kansas. The section corners, which establish the precise section lines, were not necessarily located, and the exact location of the drillsite location in the section is not guaranteed. Therefore, the operator securing this service and accepting this plat and all other parties relying thereon agree to hold Central Kansas Oilfield Services, Inc., its officers and employees harmless from all losses, costs and expenses and said entities released from any liability from incidental or consequential damages.
 * Elevations derived from National Geodetic Vertical Datum.

Date June 1, 2011



Mapped, edited, and published by the Geological Survey

Control by USGS and NOS/NOAA

Topography by photogrammetric methods from aerial photographs taken 1974. Field checked 1976. Map edited 1979

Projection and 10,000-foot grid ticks: Kansas coordinate system, north zone (Lambert conformal conic)
 1000-meter Universal Transverse Mercator grid, zone 14

(ELKADER NW)
 5867 IV NW

