



DRILL STEM TEST REPORT

Prepared For: **SHELBY RESOURCES L.L.C**

2717 CANAL BLVD SUITE C HAYS KS 67601

ATTN: CHARLIE STURDAVANT

24-17S14W BARTON

CLARK #5-24

Start Date: 2011.02.24 @ 10:06:00

End Date: 2011.02.24 @ 18:19:30

Job Ticket #: 16096 DST #: 1

Superior Testers Enterprises LLC
PO Box 138 Great Bend KS 67530
1-800-792-6902

Printed: 2011.02.24 @ 18:38:58

SHELBY RESOURCES L.L.C

CLARK #5-24

24-17S14W BARTON

DST # 1

LANSING H ZONE

2011.02.24



DRILL STEM TEST REPORT

SHELBY RESOURCES L.L.C
 2717 CANAL BLVD SUITE C HAYS KS 67601
 ATTN: CHARLIE STURDAVANT

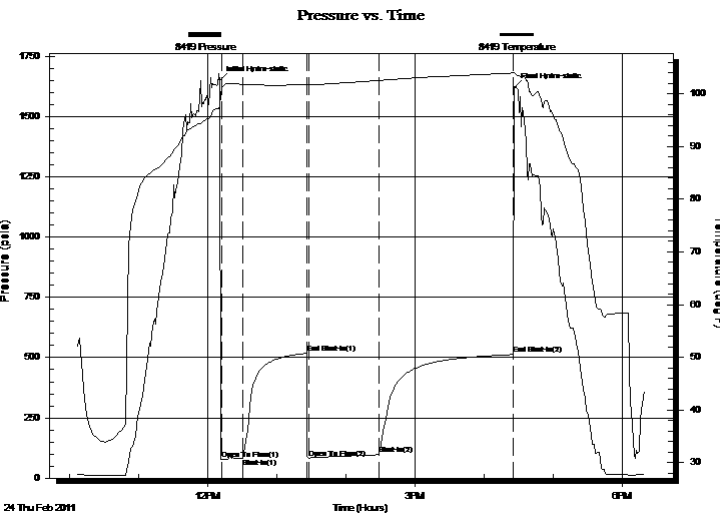
CLARK #5-24
24-17S14W BARTON
 Job Ticket: 16096 **DST#: 1**
 Test Start: 2011.02.24 @ 10:06:00

GENERAL INFORMATION:

Formation: **LANSING H ZONE**
 Deviated: No Whipstock: ft (KB)
 Time Tool Opened: 12:12:30
 Time Test Ended: 18:19:30
 Test Type: Conventional Bottom Hole (Initial)
 Tester: JARED SCHECK
 Unit No: 3320-20-GREATBEND
 Interval: ft (KB) To ft (KB) (TVD)
 Total Depth: 3317.00 ft (KB) (TVD)
 Reference Elevations: 1928.00 ft (KB)
 1917.00 ft (CF)
 Hole Diameter: 7.88 inches Hole Condition: Poor
 KB to GR/CF: 11.00 ft

Serial #: 8419 **Inside**
 Press@RunDepth: 97.31 psia @ 3313.00 ft (KB) Capacity: 5000.00 psia
 Start Date: 2011.02.24 End Date: 2011.02.24 Last Calib.: 2011.02.24
 Start Time: 10:06:00 End Time: 18:19:30 Time On Btm: 2011.02.24 @ 12:10:30
 Time Off Btm: 2011.02.24 @ 16:26:30

TEST COMMENT: 15/INITIAL OPEN:WEAK BLOW BUILT 6 INCHES INTO WATER IN 15 MINUTES
 60/INITIAL SHUT IN :NO SIGN OF BLOW BACK
 60/FINAL OPEN:WEAK BLOW BUILT BOTTOM OF BUCKET IN 43 MINUTES
 120/FINAL SHUT IN:NO BLOW BACK



PRESSURE SUMMARY

Time (Min.)	Pressure (psia)	Temp (deg F)	Annotation
0	1649.46	97.81	Initial Hydro-static
2	77.68	101.28	Open To Flow (1)
20	81.33	101.81	Shut-In(1)
76	519.17	101.81	End Shut-In(1)
77	84.20	101.74	Open To Flow (2)
138	97.31	102.58	Shut-In(2)
255	512.82	103.99	End Shut-In(2)
256	1618.29	104.10	Final Hydro-static

Recovery

Length (ft)	Description	Volume (bbl)
60.00	GASSY OIL CUT MUD	0.30
0.00	20%GAS 30%OIL50 %MUD	0.00
60.00	GASSY OILY MUD	0.30
0.00	10%GAS 30%OIL 60%MUD	0.00
60.00	GAS IN PIPE 100%GAS	0.30

Gas Rates

Choke (inches)	Pressure (psia)	Gas Rate (Mcf/d)
----------------	-----------------	------------------



DRILL STEM TEST REPORT

SHELBY RESOURCES L.L.C

CLARK #5-24

2717 CANAL BLVD SUITE C HAYS KS 67601

24-17S14W BARTON

ATTN: CHARLIE STURDAVANT

Job Ticket: 16096

DST#: 1

Test Start: 2011.02.24 @ 10:06:00

GENERAL INFORMATION:

Formation: **LANSING H ZONE**

Deviated: No Whipstock: ft (KB)

Time Tool Opened: 12:12:30

Time Test Ended: 18:19:30

Test Type: Conventional Bottom Hole (Initial)

Tester: JARED SCHECK

Unit No: 3320-20-GREATBEND

Interval: ft (KB) To ft (KB) (TVD)

Reference Elevations: 1928.00 ft (KB)

Total Depth: 3317.00 ft (KB) (TVD)

1917.00 ft (CF)

Hole Diameter: 7.88 inches Hole Condition: Poor

KB to GR/CF: 11.00 ft

Serial #: 8524 Outside

Press@RunDepth: 513.21 psia @ 3314.00 ft (KB)

Capacity: 5000.00 psia

Start Date: 2011.02.24

End Date:

2011.02.24

Last Calib.:

2011.02.24

Start Time: 10:06:00

End Time:

18:19:30

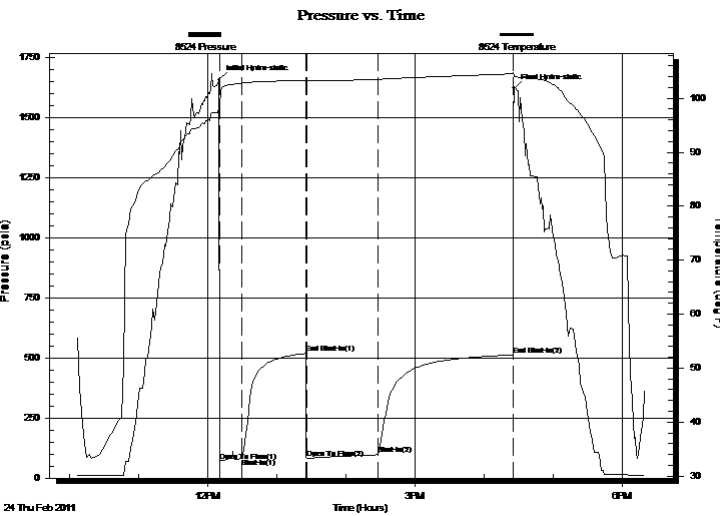
Time On Btm:

2011.02.24 @ 12:10:00

Time Off Btm:

2011.02.24 @ 16:26:00

TEST COMMENT: 15/INITIAL OPEN:WEAK BLOW BUILT 6 INCHES INTO WATER IN 15 MINUTES
 60/INITIAL SHUT IN :NO SIGN OF BLOW BACK
 60/FINAL OPEN:WEAK BLOW BUILT BOTTOM OF BUCKET IN 43 MINUTES
 120/FINAL SHUT IN:NO BLOW BACK



PRESSURE SUMMARY

Time (Min.)	Pressure (psia)	Temp (deg F)	Annotation
0	1657.82	98.28	Initial Hydro-static
1	69.83	98.68	Open To Flow (1)
20	80.72	102.80	Shut-In(1)
75	519.72	103.24	End Shut-In(1)
76	83.59	103.22	Open To Flow (2)
138	97.67	103.53	Shut-In(2)
255	513.21	104.55	End Shut-In(2)
256	1622.03	104.20	Final Hydro-static

Recovery

Length (ft)	Description	Volume (bbl)
60.00	GASSY OIL CUT MUD	0.30
0.00	20%GAS 30%OIL50 %MUD	0.00
60.00	GASSY OILY MUD	0.30
0.00	10%GAS 30%OIL 60%MUD	0.00
60.00	GAS IN PIPE 100%GAS	0.30

Gas Rates

	Choke (inches)	Pressure (psia)	Gas Rate (Mcf/d)



DRILL STEM TEST REPORT

TOOL DIAGRAM

SHELBY RESOURCES L.L.C
 2717 CANAL BLVD SUITE C HAYS KS 67601
 ATTN: CHARLIE STURDAVANT

CLARK #5-24
24-17S14W BARTON
 Job Ticket: 16096 **DST#: 1**
 Test Start: 2011.02.24 @ 10:06:00

Tool Information

Drill Pipe:	Length: 3101.00 ft	Diameter: 3.80 inches	Volume: 43.50 bbl	Tool Weight:	1000.00 lb
Heavy Wt. Pipe:	Length: 0.00 ft	Diameter: 0.00 inches	Volume: 0.00 bbl	Weight set on Packer:	20000.00 lb
Drill Collar:	Length: 180.00 ft	Diameter: 2.25 inches	Volume: 0.89 bbl	Weight to Pull Loose:	80000.00 lb
			<u>Total Volume: 44.39 bbl</u>	Tool Chased	8.00 ft
Drill Pipe Above KB:	15.00 ft			String Weight: Initial	60000.00 lb
Depth to Top Packer:	3295.00 ft			Final	60000.00 lb
Depth to Bottom Packer:	ft				
Interval between Packers:	22.00 ft				
Tool Length:	51.00 ft				
Number of Packers:	2	Diameter:	6.75 inches		

Tool Comments: TOOL CHASED 8 FEET TO BOTTOM

Tool Description	Length (ft)	Serial No.	Position	Depth (ft)	Accum. Lengths
Change Over Sub	1.00			3267.00	
Shut-In Tool	5.00			3272.00	
Hydraulic Tool	5.00			3277.00	
Jars	6.00			3283.00	
Safety Joint	2.00			3285.00	
Packer	5.00			3290.00	29.00 Bottom Of Top Packer
Packer	5.00			3295.00	
Perforations	17.00			3312.00	
Recorder	1.00	8419	Inside	3313.00	
Recorder	1.00	8524	Outside	3314.00	
Bullnose	3.00			3317.00	22.00 Bottom Packers & Anchor

Total Tool Length: 51.00



DRILL STEM TEST REPORT

FLUID SUMMARY

SHELBY RESOURCES L.L.C

CLARK #5-24

2717 CANAL BLVD SUITE C HAYS KS 67601

24-17S14W BARTON

Job Ticket: 16096

DST#: 1

ATTN: CHARLIE STURDAVANT

Test Start: 2011.02.24 @ 10:06:00

Mud and Cushion Information

Mud Type: Gel Chem

Cushion Type:

Oil API:

deg API

Mud Weight: 9.00 lb/gal

Cushion Length:

ft

Water Salinity:

ppm

Viscosity: 57.00 sec/qt

Cushion Volume:

bbbl

Water Loss: 7.20 in³

Gas Cushion Type:

Resistivity: ohm.m

Gas Cushion Pressure:

psia

Salinity: 4100.00 ppm

Filter Cake: 1.00 inches

Recovery Information

Recovery Table

Length ft	Description	Volume bbl
60.00	GASSY OIL CUT MUD	0.295
0.00	20%GAS 30%OIL50 %MUD	0.000
60.00	GASSY OILY MUD	0.295
0.00	10%GAS 30%OIL 60%MUD	0.000
60.00	GAS IN PIPE 100%GAS	0.295

Total Length: 180.00 ft Total Volume: 0.885 bbl

Num Fluid Samples: 0

Num Gas Bombs: 0

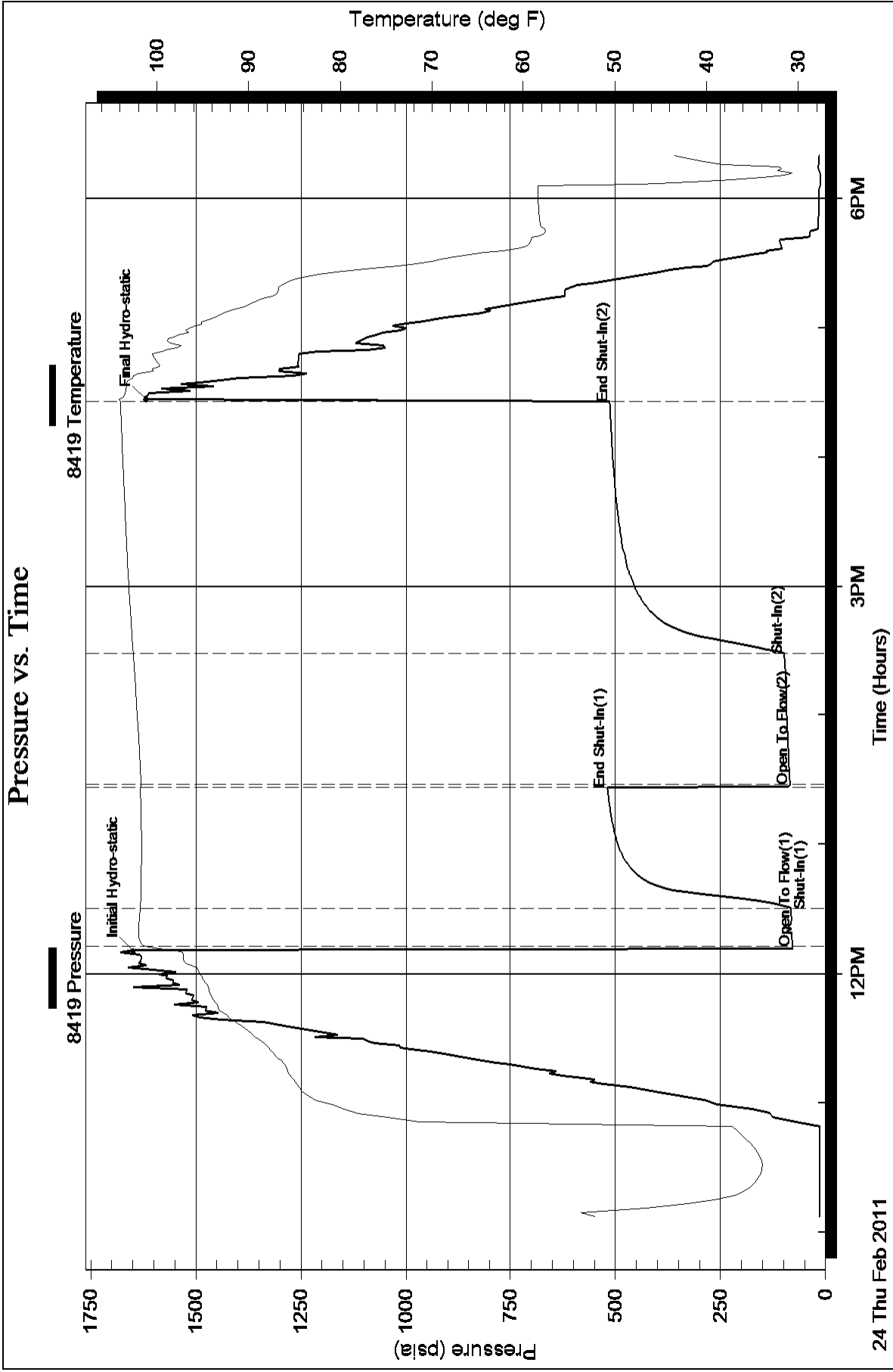
Serial #:

Laboratory Name:

Laboratory Location:

Recovery Comments: TOOL CHASED 8 FEET TO BOTTOM

Pressure vs. Time



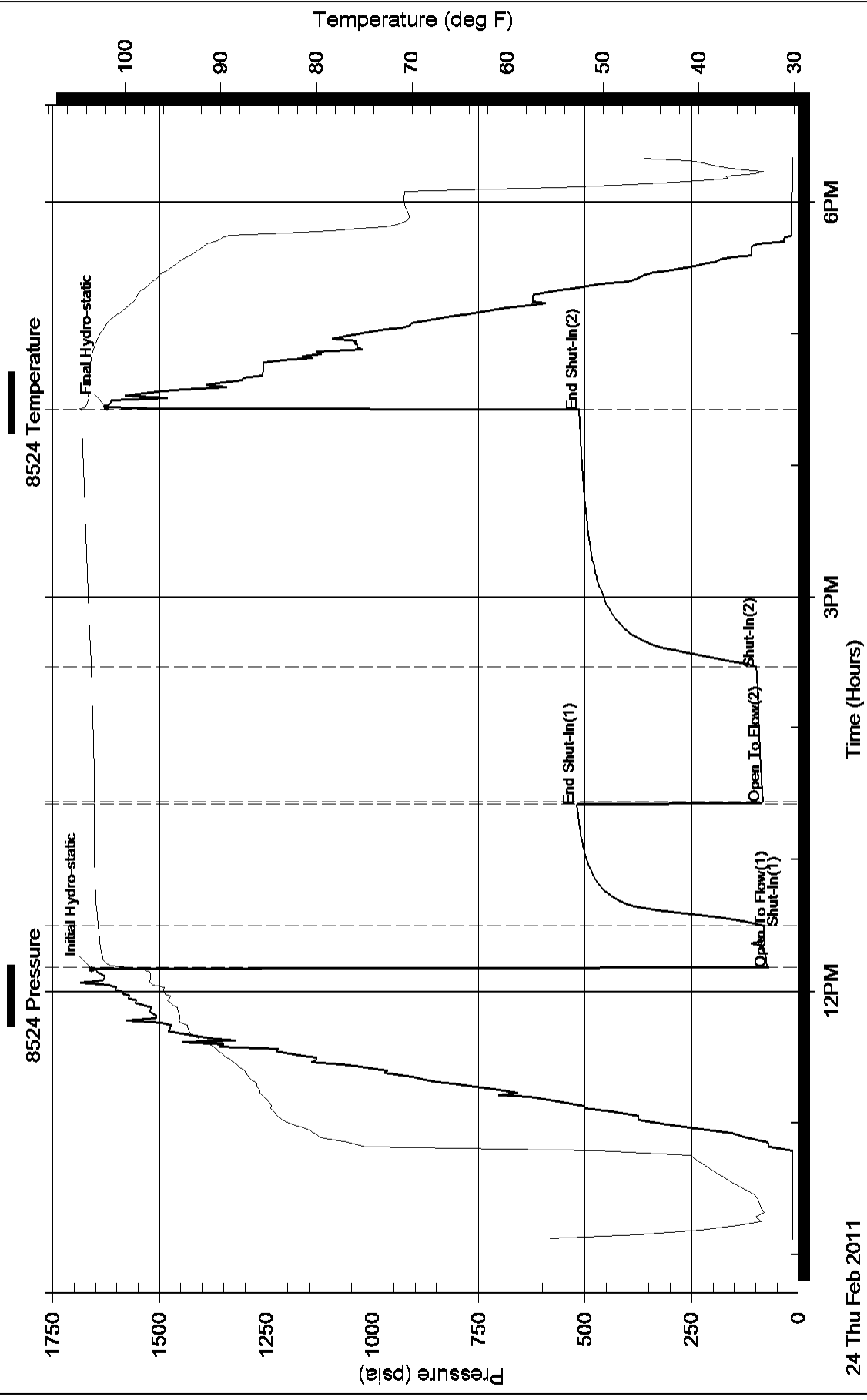
24 Thu Feb 2011

12PM

3PM

6PM

Pressure vs. Time



24 Thu Feb 2011