

DRILL STEM TEST REPORT

Prepared For: **Shelby Resources L.L.C.**

445 Union Boulevard Suite 208
Lakewood , Colorado 80228

ATTN: Charley Sturdavant

`24-17s-14w

Clark #4-24

Start Date: 2010.11.17 @ 09:40:00

End Date: 2010.11.17 @ 00:00:00

Job Ticket #: 15745 DST #: 1

Superior Testers Enterprises LLC
PO Box 138 Great Bend KS 67530
1-800-792-6902

Printed: 2010.11.17 @ 07:52:25

Shelby Resources L.L.C. Clark #4-24 `24-17s-14w DST # 1 Kansas City "H" 2010.11.17



DRILL STEM TEST REPORT

Shelby Resources L.L.C.

Clark #4-24

445 Union Boulevard Suite 208
Lakewood, Colorado 80228

24-17s-14w

Job Ticket: 15745

DST#: 1

ATTN: Charley Sturdavant

Test Start: 2010.11.17 @ 09:40:00

GENERAL INFORMATION:

Formation: **Kansas City "H"**

Deviated: No Whipstock: ft (KB)

Time Tool Opened: 00:00:00

Time Test Ended: 00:00:00

Test Type: Conventional Bottom Hole (Initial)

Tester: Gene Budig

Unit No: 3335-38

Interval: 3300.00 ft (KB) To 3316.00 ft (KB) (TVD)

Reference Elevations: 1927.00 ft (KB)

Total Depth: 3316.00 ft (KB) (TVD)

1916.00 ft (CF)

Hole Diameter: 7.88 inches Hole Condition: Fair

KB to GR/CF: 11.00 ft

Serial #: 8525 Outside

Press @ RunDepth: 373.38 psia @ 3313.00 ft (KB)

Capacity: 5000.00 psia

Start Date: 2010.11.16

End Date: 2010.11.16

Last Calib.: 2010.11.17

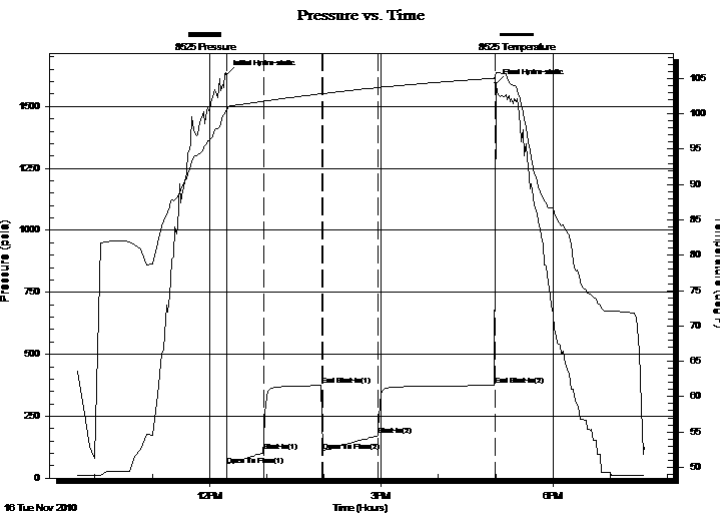
Start Time: 09:40:00

End Time: 19:37:00

Time On Btm: 2010.11.16 @ 12:18:00

Time Off Btm: 2010.11.16 @ 17:00:00

TEST COMMENT: 1st Opening 29 Minutes-Good blow built to the bottom of a 5 gallon bucket in 2 minutes
 1st Shut-In 60 Minutes- Good blow back with gas to surface
 2nd Opening 60 Minutes-Good blow built to the bottom of a 5 gallon bucket in 4 minutes
 2nd Shut-In 120 Minutes-Good blow back



PRESSURE SUMMARY

| Time (Min.) | Pressure (psia) | Temp (deg F) | Annotation |
|-------------|-----------------|--------------|----------------------|
| 0 | 1629.78 | 100.71 | Initial Hydro-static |
| 1 | 52.84 | 100.39 | Open To Flow (1) |
| 39 | 106.64 | 101.77 | Shut-In(1) |
| 100 | 373.73 | 102.83 | End Shut-In(1) |
| 101 | 107.78 | 102.83 | Open To Flow (2) |
| 159 | 171.21 | 103.70 | Shut-In(2) |
| 281 | 373.38 | 105.03 | End Shut-In(2) |
| 282 | 1593.36 | 105.76 | Final Hydro-static |

Recovery

| Length (ft) | Description | Volume (bbl) |
|-------------|---------------------------------|--------------|
| 0.00 | Gas to surface 1st shut-in | 0.00 |
| 204.00 | Clean gassy oil 15% gas 85% oil | 1.16 |
| 189.00 | muddy gassy frothy oil | 2.65 |
| 0.00 | would not grind out | 0.00 |
| 0.00 | gravity of oil 41 corrected | 0.00 |

Gas Rates

| | Choke (inches) | Pressure (psia) | Gas Rate (Mcf/d) |
|--|----------------|-----------------|------------------|
|--|----------------|-----------------|------------------|



DRILL STEM TEST REPORT

TOOL DIAGRAM

Shelby Resources L.L.C.
 445 Union Boulevard Suite 208
 Lakewood, Colorado 80228
 ATTN: Charley Sturdavant

Clark #4-24
24-17s-14w
 Job Ticket: 15745 **DST#: 1**
 Test Start: 2010.11.17 @ 09:40:00

Tool Information

| | | | | |
|---------------------------|--------------------|-----------------------|----------------------------|------------------------------------|
| Drill Pipe: | Length: 3099.00 ft | Diameter: 3.80 inches | Volume: 43.47 bbl | Tool Weight: 2000.00 lb |
| Heavy Wt. Pipe: | Length: ft | Diameter: 2.76 inches | Volume: - bbl | Weight set on Packer: 20000.00 lb |
| Drill Collar: | Length: 187.00 ft | Diameter: 2.25 inches | Volume: 0.92 bbl | Weight to Pull Loose: 70000.00 lb |
| | | | <u>Total Volume: - bbl</u> | Tool Chased 0.00 ft |
| Drill Pipe Above KB: | 14.00 ft | | | String Weight: Initial 62000.00 lb |
| Depth to Top Packer: | 3300.00 ft | | | Final 63000.00 lb |
| Depth to Bottom Packer: | ft | | | |
| Interval between Packers: | 16.00 ft | | | |
| Tool Length: | 44.00 ft | | | |
| Number of Packers: | 2 | Diameter: 6.75 inches | | |

Tool Comments:

| Tool Description | Length (ft) | Serial No. | Position | Depth (ft) | Accum. Lengths |
|---------------------------|--------------|------------|----------|------------|------------------------------------|
| Shut-In Tool | 5.00 | | | 3277.00 | |
| Hydraulic Tool | 5.00 | | | 3282.00 | |
| Jars | 6.00 | | | 3288.00 | |
| Safety Joint | 2.00 | | | 3290.00 | |
| Packer | 5.00 | | | 3295.00 | 28.00 Bottom Of Top Packer |
| Packer | 5.00 | | | 3300.00 | |
| Perforations | 11.00 | | | 3311.00 | |
| Recorder | 1.00 | 8524 | Inside | 3312.00 | |
| Recorder | 1.00 | 8525 | Outside | 3313.00 | |
| Bull Plug | 3.00 | | | 3316.00 | 16.00 Bottom Packers & Anchor |
| Total Tool Length: | 44.00 | | | | |



DRILL STEM TEST REPORT

FLUID SUMMARY

Shelby Resources L.L.C.

Clark #4-24

445 Union Boulevard Suite 208
Lakewood, Colorado 80228

24-17s-14w

Job Ticket: 15745

DST#: 1

ATTN: Charley Sturdavant

Test Start: 2010.11.17 @ 09:40:00

Mud and Cushion Information

Mud Type: Gel Chem

Cushion Type:

Oil API:

deg API

Mud Weight: 9.00 lb/gal

Cushion Length:

ft

Water Salinity:

ppm

Viscosity: 54.00 sec/qt

Cushion Volume:

bbbl

Water Loss: 8.80 in³

Gas Cushion Type:

Resistivity: ohm.m

Gas Cushion Pressure:

psia

Salinity: 5000.00 ppm

Filter Cake: inches

Recovery Information

Recovery Table

| Length ft | Description | Volume bbbl |
|--------------|---------------------------------|----------------|
| 0.00 | Gas to surface 1st shut-in | 0.000 |
| 204.00 | Clean gassy oil 15% gas 85% oil | 1.158 |
| 189.00 | muddy gassy frothy oil | 2.651 |
| 0.00 | would not grind out | 0.000 |
| 0.00 | gravity of oil 41 corrected | 0.000 |

Total Length: 393.00 ft

Total Volume: 3.809 bbl

Num Fluid Samples: 0

Num Gas Bombs: 0

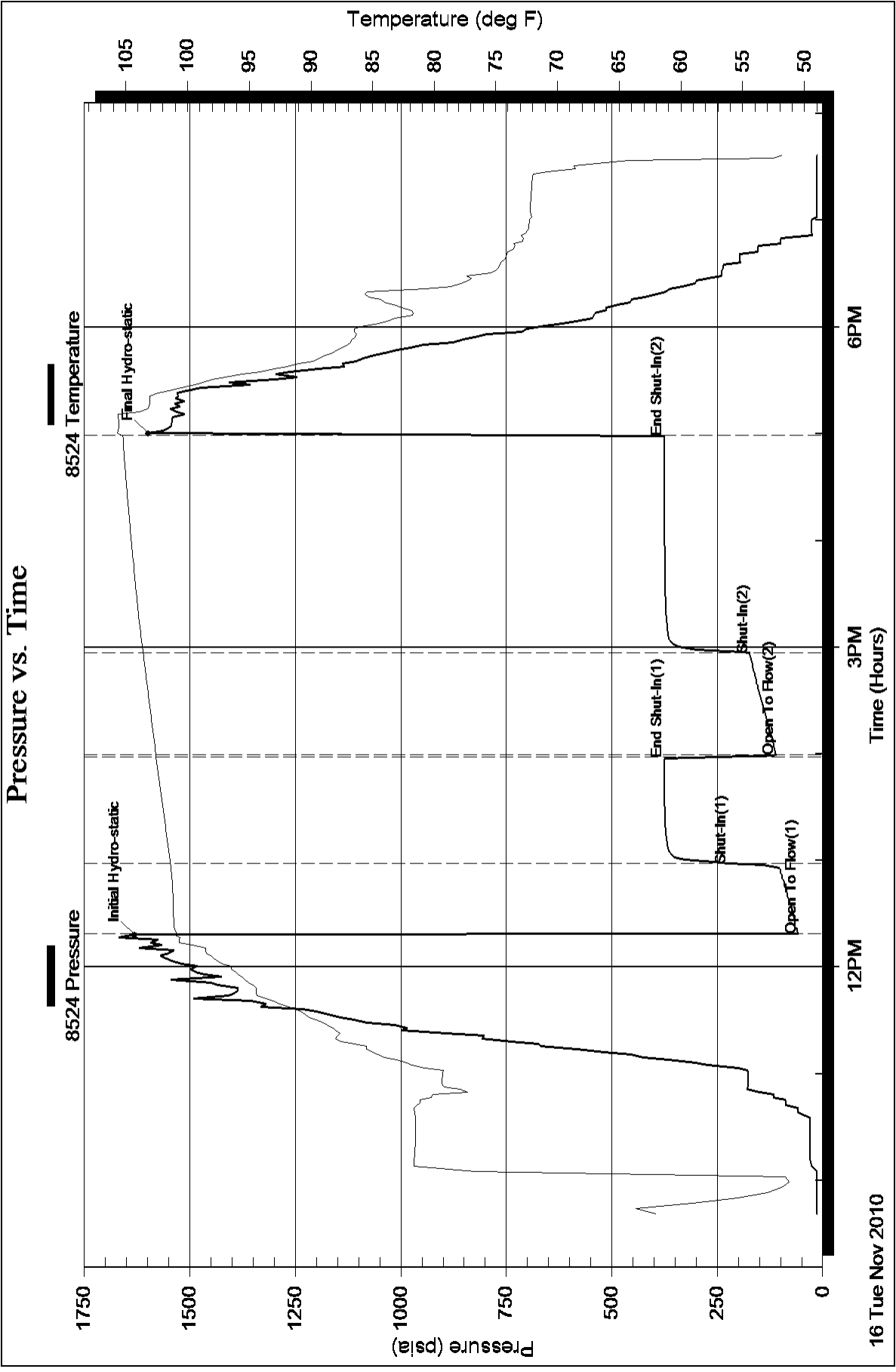
Serial #:

Laboratory Name:

Laboratory Location:

Recovery Comments:

Pressure vs. Time



Pressure vs. Time

