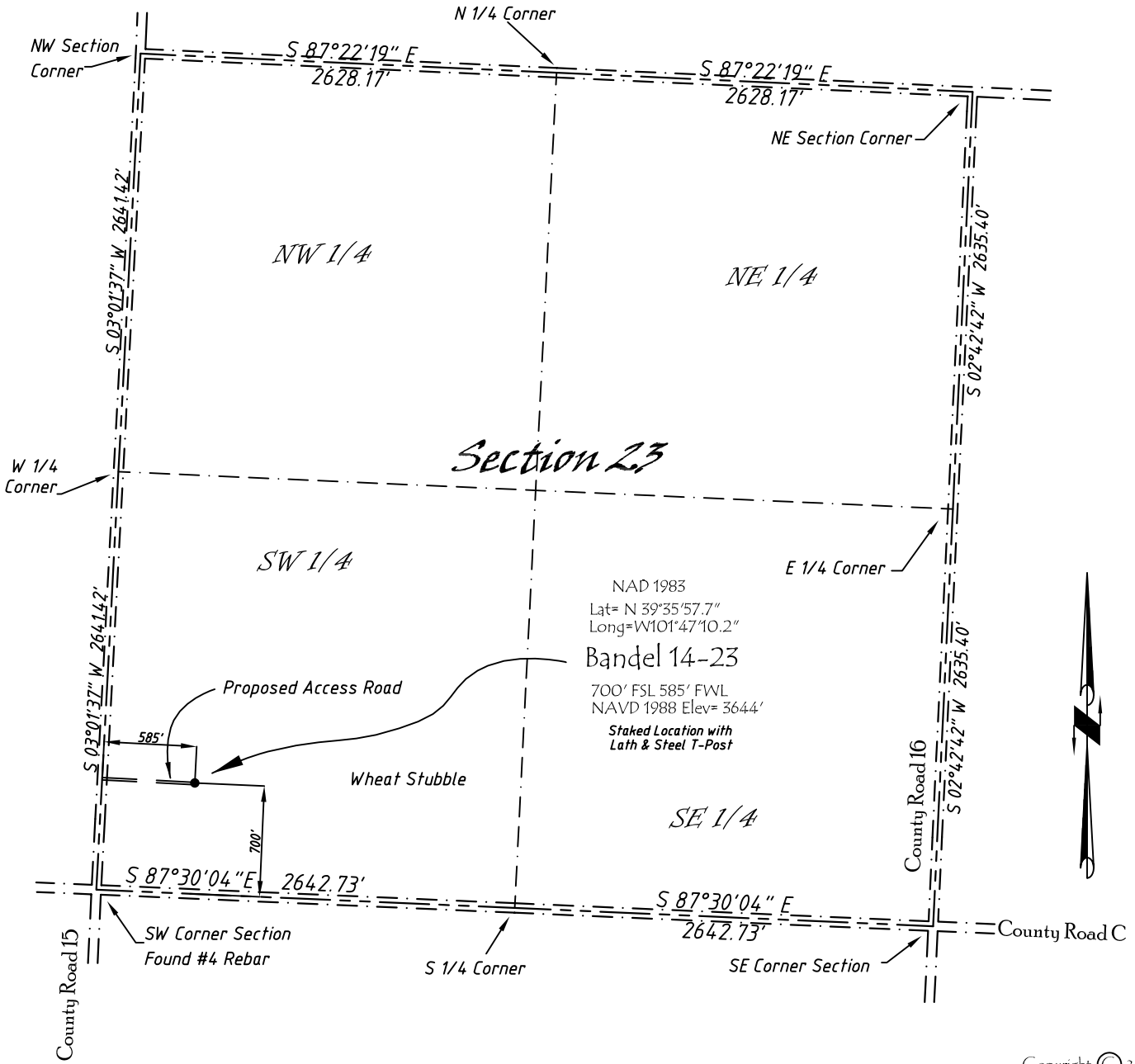


Well Location Map

Bandel 14-23

SW 1/4, SW 1/4, Section 23, T5S, R40W, 6th P.M. Cheyenne County, Kansas
 700' FSL - 585' FWL Elev=3644'



NAD 1983
 Lat= N 39°35'57.7"
 Long=W101°47'10.2"
 Bandel 14-23
 700' FSL 585' FWL
 NAVD 1988 Elev= 3644'
 Staked Location with
 Lath & Steel T-Post

Copyright © 2011

Directions:

From the Intersection of County Road 15 & Hwy 36 @ St Francis, KS, Go S on County Rd 15 Approximately 11.35 miles, then E 585 feet to staked location

This Drawing is for Construction Purposes Only

Noble Energy, Inc.		
DRAWN GP	DATE 2/08/11	Section 23
FB B7+P20	EQ HjPro	T5S, R40W, 6th P.M. Cheyenne County, KS
SCALE 1"=1000'	SHEET 1 of 1	PROJECT NO. 1570.167

North
Winds
Surveys, Inc.

402 Walnut
Kanorado, KS
785/399/2551