



WELL COMPLETION FORM
WELL HISTORY - DESCRIPTION OF WELL & LEASE

OPERATOR: License # _____

Name: _____

Address 1: _____

Address 2: _____

City: _____ State: _____ Zip: _____ + _____

Contact Person: _____

Phone: (_____) _____

CONTRACTOR: License # _____

Name: _____

Wellsite Geologist: _____

Purchaser: _____

Designate Type of Completion:

- New Well Re-Entry Workover
- Oil WSW SWD SIOW
- Gas D&A ENHR SIGW
- OG GSW Temp. Abd.
- CM (Coal Bed Methane)
- Cathodic Other (Core, Expl., etc.): _____

If Workover/Re-entry: Old Well Info as follows:

Operator: _____

Well Name: _____

Original Comp. Date: _____ Original Total Depth: _____

- Deepening Re-perf. Conv. to ENHR Conv. to SWD
- Conv. to GSW
- Plug Back: _____ Plug Back Total Depth _____
- Commingled Permit #: _____
- Dual Completion Permit #: _____
- SWD Permit #: _____
- ENHR Permit #: _____
- GSW Permit #: _____

Spud Date or Recompletion Date	Date Reached TD	Completion Date or Recompletion Date
-----------------------------------	-----------------	---

API No. 15 - _____

Spot Description: _____

_____-_____-_____- Sec. _____ Twp. _____ S. R. _____ East West

_____ Feet from North / South Line of Section

_____ Feet from East / West Line of Section

Footages Calculated from Nearest Outside Section Corner:

- NE NW SE SW

County: _____

Lease Name: _____ Well #: _____

Field Name: _____

Producing Formation: _____

Elevation: Ground: _____ Kelly Bushing: _____

Total Depth: _____ Plug Back Total Depth: _____

Amount of Surface Pipe Set and Cemented at: _____ Feet

Multiple Stage Cementing Collar Used? Yes No

If yes, show depth set: _____ Feet

If Alternate II completion, cement circulated from: _____

feet depth to: _____ w/ _____ sx cmt.

Drilling Fluid Management Plan

(Data must be collected from the Reserve Pit)

Chloride content: _____ ppm Fluid volume: _____ bbls

Dewatering method used: _____

Location of fluid disposal if hauled offsite: _____

Operator Name: _____

Lease Name: _____ License #: _____

Quarter _____ Sec. _____ Twp. _____ S. R. _____ East West

County: _____ Permit #: _____

AFFIDAVIT

I am the affiant and I hereby certify that all requirements of the statutes, rules and regulations promulgated to regulate the oil and gas industry have been fully complied with and the statements herein are complete and correct to the best of my knowledge.

Submitted Electronically

KCC Office Use ONLY

- Letter of Confidentiality Received
Date: _____
- Confidential Release Date: _____
- Wireline Log Received
- Geologist Report Received
- UIC Distribution
- ALT I II III Approved by: _____ Date: _____



Operator Name: _____ Lease Name: _____ Well #: _____

Sec. _____ Twp. _____ S. R. _____ East West County: _____

INSTRUCTIONS: Show important tops and base of formations penetrated. Detail all cores. Report all final copies of drill stems tests giving interval tested, time tool open and closed, flowing and shut-in pressures, whether shut-in pressure reached static level, hydrostatic pressures, bottom hole temperature, fluid recovery, and flow rates if gas to surface test, along with final chart(s). Attach extra sheet if more space is needed. Attach complete copy of all Electric Wire-line Logs surveyed. Attach final geological well site report.

Drill Stem Tests Taken <input type="checkbox"/> Yes <input type="checkbox"/> No <i>(Attach Additional Sheets)</i> Samples Sent to Geological Survey <input type="checkbox"/> Yes <input type="checkbox"/> No Cores Taken <input type="checkbox"/> Yes <input type="checkbox"/> No Electric Log Run <input type="checkbox"/> Yes <input type="checkbox"/> No Electric Log Submitted Electronically <input type="checkbox"/> Yes <input type="checkbox"/> No <i>(If no, Submit Copy)</i> List All E. Logs Run:	<input type="checkbox"/> Log Formation (Top), Depth and Datum <input type="checkbox"/> Sample Name Top Datum
---	---

CASING RECORD <input type="checkbox"/> New <input type="checkbox"/> Used							
Report all strings set-conductor, surface, intermediate, production, etc.							
Purpose of String	Size Hole Drilled	Size Casing Set (In O.D.)	Weight Lbs. / Ft.	Setting Depth	Type of Cement	# Sacks Used	Type and Percent Additives

ADDITIONAL CEMENTING / SQUEEZE RECORD				
Purpose:	Depth Top Bottom	Type of Cement	# Sacks Used	Type and Percent Additives
_____ Perforate _____ Protect Casing _____ Plug Back TD _____ Plug Off Zone				

Shots Per Foot	PERFORATION RECORD - Bridge Plugs Set/Type Specify Footage of Each Interval Perforated	Acid, Fracture, Shot, Cement Squeeze Record <i>(Amount and Kind of Material Used)</i>	Depth

TUBING RECORD: Size: _____ Set At: _____ Packer At: _____ Liner Run: Yes No

Date of First, Resumed Production, SWD or ENHR. _____ Producing Method: Flowing Pumping Gas Lift Other *(Explain)* _____

Estimated Production Per 24 Hours	Oil Bbls.	Gas Mcf	Water Bbls.	Gas-Oil Ratio	Gravity
-----------------------------------	-----------	---------	-------------	---------------	---------

DISPOSITION OF GAS: <input type="checkbox"/> Vented <input type="checkbox"/> Sold <input type="checkbox"/> Used on Lease <i>(If vented, Submit ACO-18.)</i>	METHOD OF COMPLETION: <input type="checkbox"/> Open Hole <input type="checkbox"/> Perf. <input type="checkbox"/> Dually Comp. <input type="checkbox"/> Commingled <i>(Submit ACO-5)</i> <input type="checkbox"/> Other <i>(Specify)</i> _____ <i>(Submit ACO-4)</i>	PRODUCTION INTERVAL: _____ _____
---	--	--

Form	ACO1 - Well Completion
Operator	F. G. Holl Company L.L.C.
Well Name	BLACKWELL/PETERSON 1-25
Doc ID	1057349

All Electric Logs Run

DIL
CDL/CNL
BHCS
RESISTIVITY
COMPUTER PROCESSED INTERPRETATION
SECTOR BOND LOG
TRACER SURVEY
FRAC FINDER

Form	ACO1 - Well Completion
Operator	F. G. Holl Company L.L.C.
Well Name	BLACKWELL/PETERSON 1-25
Doc ID	1057349

Tops

Name	Top	Datum
Chase	1958	-15
Herrington	1959	-16
Winfield	2008	-65
Towanda	2070	-127
Ft Riley	2104.5	-161.5
B/Florence	2206	-263
Kinney Ls	2226	-283
Wrefold	2261	-318
Neva	2464	-521
Red Eagle	2522	-579
Stotler	2839	-896
Tarkio	2904	-961
Topeka	3148	-1205
Heebner	3429	-1486
Brown Lime	3557	-1614
Lansing	3565	-1622
BKC	3796	-1853
Conglomerate	3878	-1935
Viola	3904	-1961
Simpson Shale	3985	-2042
Simpson Sand	4003	-2060
Arbuckle	4039	-2096

Conservation Division
Finney State Office Building
130 S. Market, Rm. 2078
Wichita, KS 67202-3802



Phone: 316-337-6200
Fax: 316-337-6211
<http://kcc.ks.gov/>

Mark Sievers, Chairman
Ward Loyd, Commissioner
Thomas E. Wright, Commissioner

Sam Brownback, Governor

June 07, 2011

Franklin R. Greenbaum
F. G. Holl Company L.L.C.
9431 E CENTRAL STE 100
WICHITA, KS 67206-2563

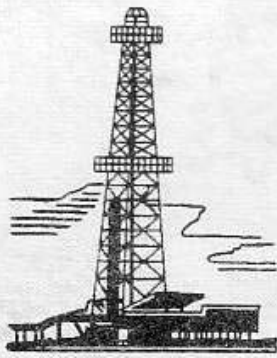
Re: ACO1
API 15-145-21641-00-00
BLACKWELL/PETERSON 1-25
SW/4 Sec.25-22S-15W
Pawnee County, Kansas

Dear Production Department:

We are herewith requesting that the Well Completion Form ACO-1 and attached information for the subject well be held confidential for a period of two years.

Should you have any questions or need additional information regarding subject well, please contact our office.

Respectfully,
Franklin R. Greenbaum



WELLSITE GEOLOGIST'S REPORT

J. R. Hustead
Consulting Geologist



Scale 1:240 (5"=100') Imperial
Measured Depth Log

Well Name: Blackwell-Peterson No 1-25
Location: SEC 25-T2S-15W
License Number: 15-145-21,641-0000
Spud Date: May-10-2011
Surface Coordinates: 70' W., 160' S. of C E/2 NE SW

Region: Pawnee
Drilling Completed: MAY-21-2011

Bottom Hole Coordinates: Vertical Hole

Ground Elevation (ft): 1985' K.B. Elevation (ft): 1993'
Logged Interval (ft): 1850' To: 4199' Total Depth (ft): 4199'
Formation: LANSING/KC, ARBUCKLE
Type of Drilling Fluid: Starch, Chemical Premix (Displaced)

Printed by WellSight Log Viewer from WellSight Systems 1-800-447-1534 www.WellSight.com

OPERATOR:

Company: F.G. HOLL COMPANY LLC
Address: 9431 E. CENTRAL STE 100
WICHITA, KANSAS 67206-2563

DRILLING CONTRACTOR:

Duke Drilling Company, Rig #2
Drill Pipe 4.5 X H; DRILL COLLARS 6.25 x 2.25, 496' BHA
BIT #2: 7-7/8" JZ QX20 (3-16); WOB: 32-36; RPM 60-65; KELLY BUSHING 8' ABOVE GROUND
LEVEL-MIRT-MAY-11-2011

SURFACE CASING:

Surface casing at 8 5/8 set 944' with total cmt 400 sxs
Production casing at 4 1/2 set at 4192' with total cmt 225 sxs

CIRCULATION SYSTEM:

MUD-PUMP: EWCO-14W-400, DUPLEX, 6.0 x 14, 60 SPM, 266GPM (85%); SPP: 600 PSI; EARTH PITS; MUD-CO/
SERVICE MUD, INC.; RICK HUGHES

GAS DETECTION SYSTEM:

MBC WELL LOGGING AND LEASING
ANALOG HOTWIRE AND CHROMATOGRAPH

OPEN HOLE LOGS:

DN (PE), DI (SP), ML: Sonic; . LogTech, Hays, KS, K Bange. Log total depth (4198') to RTD at 4199'.

COMPLETION:

Production casing set on Lansing/KC

WELLSITE GEOLOGIST:

Rene Husted
 600 N. WINWOOD ST
 GARDNER, KS 66030
 (913) 908-3390

DRILL STEM TEST #1:

TARKIO- 2844'-2907'-INITIAL BLOW-GD BLOW BUILT TO THE BOTTOM OF BUCKET IN 30 SECONDS-FINAL BLOW-STRONG BLOW BUILT TO BOTTOM OF BUCKET IN 15 SECONDS-REC-150' THICK HEAVY MUD 100%-60 FT MUDDY WATER-30% MUD-70% WATER-150' WATER-2% MUD AND 98% WATER- CHLORIDES 146,000-RESISIVITY .25 @ 66 DEGREES

5/60/45/90

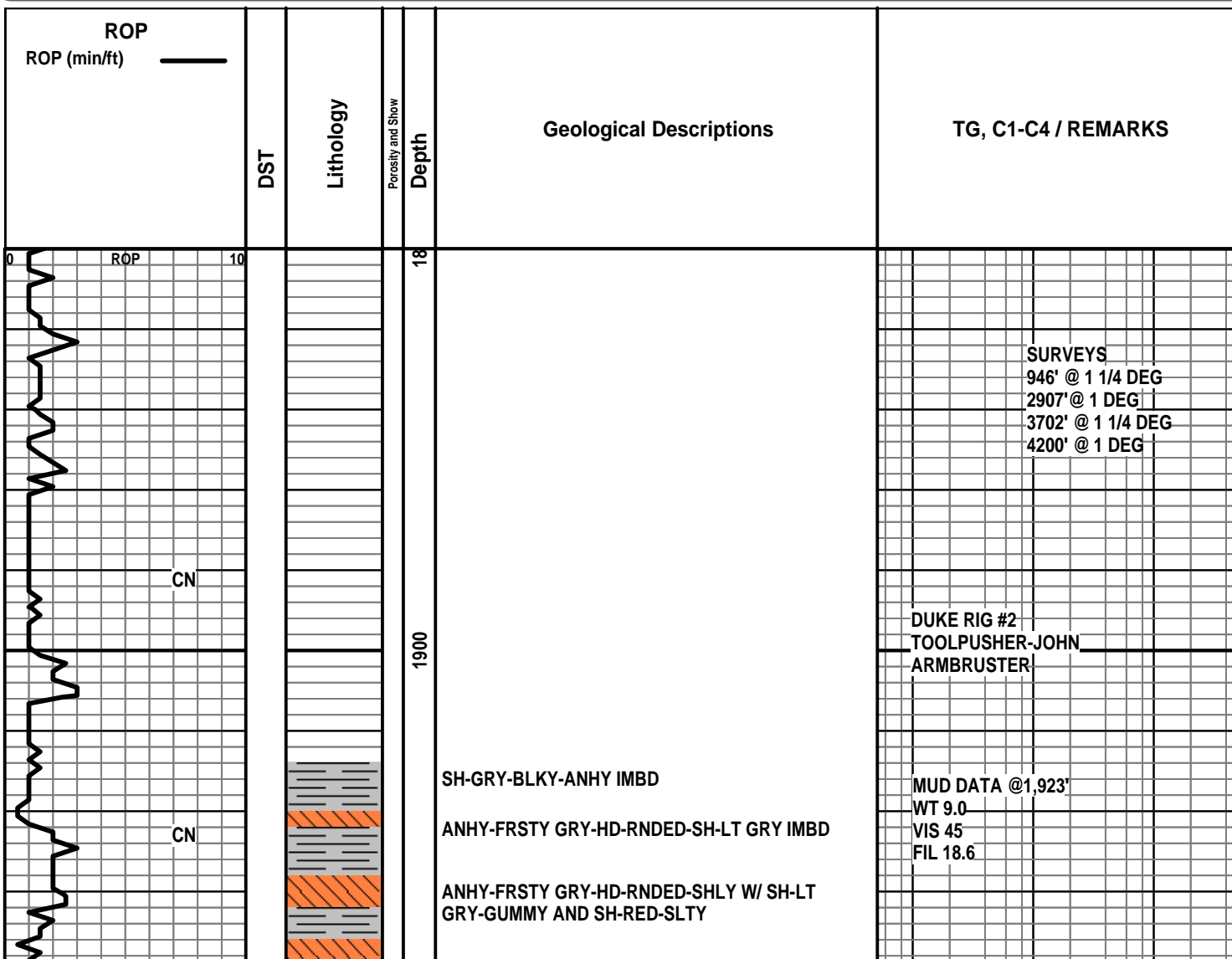
SHUT IN PRESSURES-1045.12-1024.51 PSIA

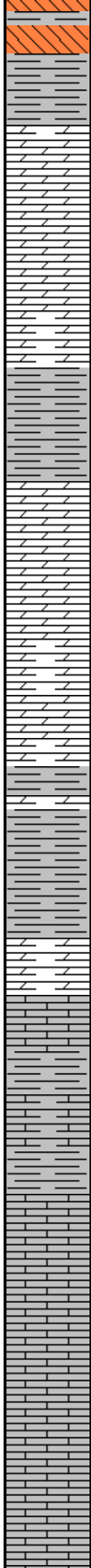
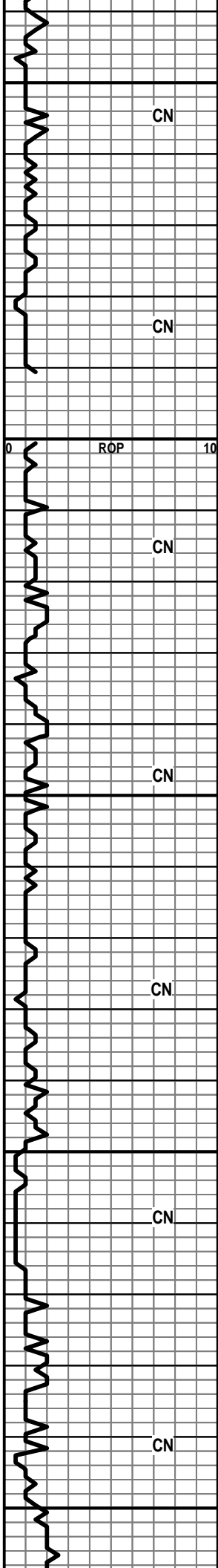
INITIAL FLOW PRESSURES-68.91-155.24 PSIA

FINAL FLOW PRESSURES-223.23-232.12 PSIA

INITIAL HYDRO STATIC PRESSURE-1422.83-1363.98 PSIA

GAS RATE - INITIAL 13.4 MCF/D TO FINAL 8.7 MCF/D





1950
2000
2050
2100
2150

HERINGTON 1955' (+38)

POOR SAMPLES

GAS DETECTOR NOT WORKING

POOR SAMPLES

WINFIELD 2006' (-13')

POOR SAMPLES

WT. 9.0
VIS 45

POOR SAMPLES

POOR SAMPLES

TOWANDA 2070' (-77')

SH-DK GRY-WAXY

DOLO-LT GRY-V-F-GRN-HD-DNS W/ LOTS OF
CHRT-GRY-OPQ-FRSH IN TRAY

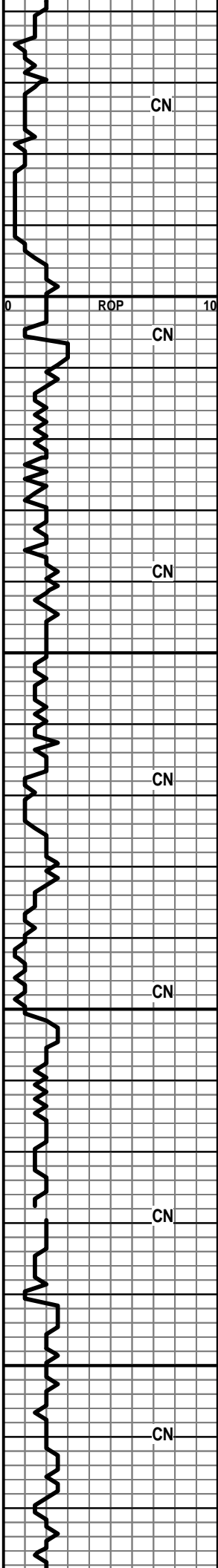
FT RILEY 2106' (-113')

POOR SAMPLE

POOR SAMPLE

LS-TN-F-XLN-OOL-FR TO GD OOLMOLDIC POR-DULL
WHT FLOR

LS-TN-F-XLN-SM OOL-HD-DNS



LS-TN/GRY-F-XLN-SM TO LG OOL-TR SH IMBD-FR TO
GD OOL-MOLDIC POR

LS A.A.

LS-TN-F-XLN-SM OOL-W/ FR TO GD SM OOL-MOLDIC
POR

LS-GRY-F-XLN-TR FOSS-HD-DNS

2200 LS-CRM-F-XLN-BRIT-V-FOSS-FUS-FR INTRA-PRT POR

B/FLORENCE 2210' (-217')

SH-GRY-SFT-GUMMY

SH-RD-SFT-GUMMY

LS-LT GRY-F-GRN-SHLY-TR FOSS

LS-GRY-F-XLN-HD-DNS-TR FOSS

2250 SH-GRN/GRY-WAXY

SH/GUMMY-LS/CHLKY

COUNCIL GROVE 2282' (-289')

SH-DK-GRY-GUMMY

2300 POOR SAMPLE

POOR SAMPLE

CROUSE 2324' (-331')

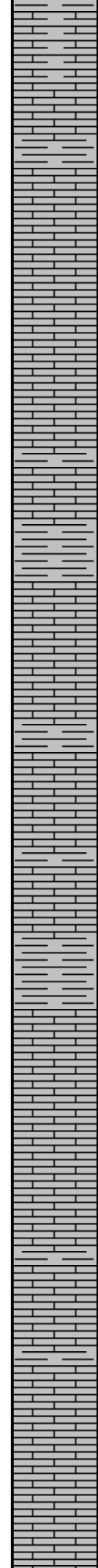
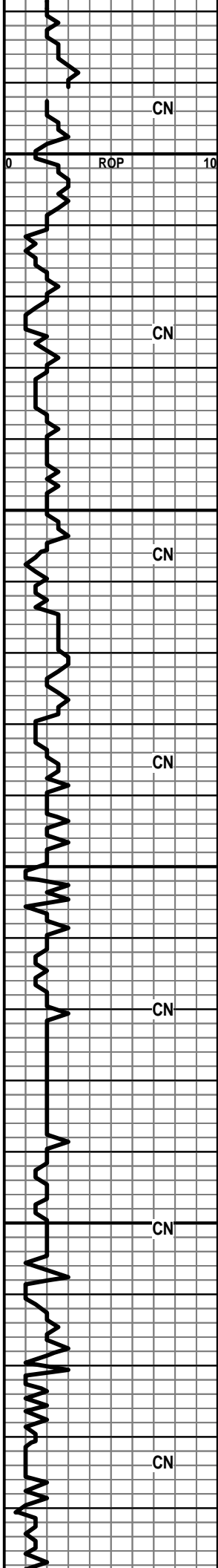
POOR SAMPLE

POOR SAMPLE

2350 POOR SAMPLE

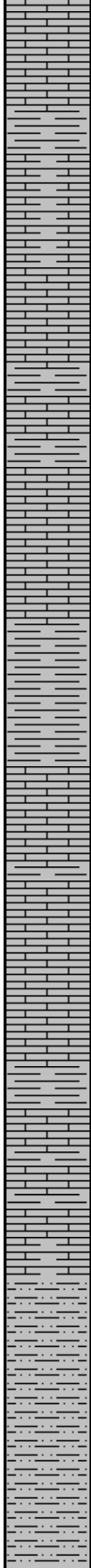
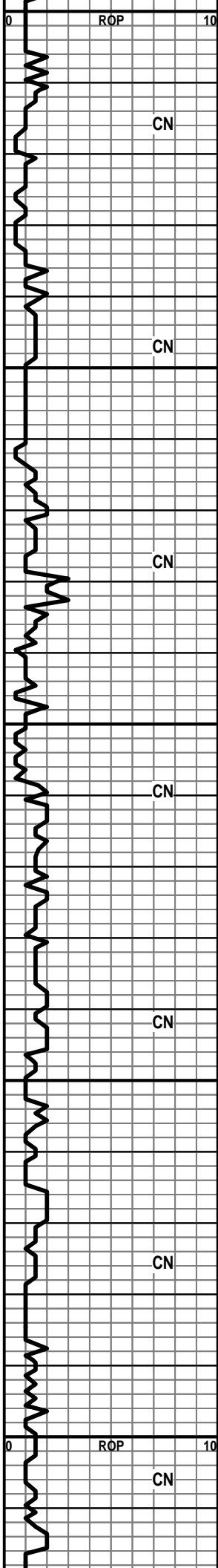
WT. 9.4
VIS 47

WT. 9.4
VIS 42



2400
 LS-OFF WHT-F-XLN-HD-DNS
 SH-SFT-GUMMY
 LS-GRY-F-XLN-HD-DNS-TR SM FOSS FRAGS
 LS-OFF WHT-F-XLN-CHLKY-V-FOSS-FR INTER/INTRA PRT POR
 LS-TN-F-XLN-HD-DNS
 SH-GRY-SFT-GUMMY
 LS-OFF WHT/GRY-F-XLN-BRIT TO HD-CHLKY IP
 LS-GRY-F-XLN-HD-SHLY-FOSS
 2450
 SH-RED-GUMMY
NEVA 2474' (-481')
 POOR SAMPLE
 LS-TN-F-XLN-FOSS-OOL-HD-DNS
 SH-DK GRY-FRM-BLKY-FOSS
 2500
 SH-LT GRY-F-GRN- SLTY
 LS-GRY-F-XLN-BRIT-CHLKY
 SH-GRY/RD-GUMMY
RED EAGLE 2538' (-545')
 LS-TN-F-GRN-CHLKY-FOSS-W/ CHRT-TN-OPQ-FRSH
 LS A.A. W/ PYR IMBD
 LS-OFF WHT-F-GRN-CHLKY
 IP-V-FOSS-OOL-FR-INTER-GRN/PP POR-TR LT BRN
 STN-NO VIS FLOR-NO VIS CUT
 2550
 LS-GRY/OFF
 WHT-MOTT-F-XLN-FOSS-OOL-CHLKY-IP-NO VIS
 POR-DULL WHT MIN FLOR-NO VIS CUT
 LS-TN-F-XLN-SM OOL-BRIT TO HD-NO VIS POR
 LS-GRY-F-XLN-RIT-OOL-SHLY-TR OOL-MOLDIC
 POR-DULL WHT MIN FLOR-NO VIS SHOW
 LS-GRY-F-XLN-SNDY TEX-BRIT-SHLY-NO VIS POR
 0 LS-TN-F-XLN-OOL-TR-OOL-MOLDIC-POR-DULL-WHT

WT9.5
 VIS 48'



2600
2650
2700
2750
2800

LS-TN-F-XLN-OOL-TR OOL-MEDIC POR-DULL WH
MIN FLOR

SH-GRY-BLKY-LMY-FOSS

LS-GRY-F-XLN-BRIT-OOL-FOSS-SHLY-CHLKY-NO VIS
POR

LS A.A. CHLKY/SHLY

LS-GRY-F-XLN-HD-DNS TR PYR XLS

SH-GRY-BLKY-FOSS

SH-GRY-FRM-BLKY-WAXY

LS-LT GRY-F-XLN-BRIT-SHLY-FOSS

LS-GRY-F-GRN/XLN-FOSS FRAGS-HD-DNS

SH-GRY-SLTY-FOSS

SH-LT GRY-SFT-SLTY-

LS-LT GRY-F-XLN-FOSS-TR OOL-HD-DNS-W/
CHRT-TN-OPQ-FOSS-FRSH

LS-TN-F-XLN-HD-DNS-W/ CHRT-GRY-OPQ-FRSH

LS-TN-F-XLN-HD-DNS-FOSS

SH-LT GRY-BLKY-FOSS-LMY

LS-GRY-F-XLN-BRIT-FOSS-SHLY

ROOT SHALE 2776' (-783')

SLTSS-FRSTY GRY-F-GRN-V-SHLY-TR HEM

SH-LT GRY-V-SLTY

SLTSS AND SH A.A.

SH-RD-FRM-BLKY

LS-OFF WHT-F-XLN-SNDY-HD-DNS

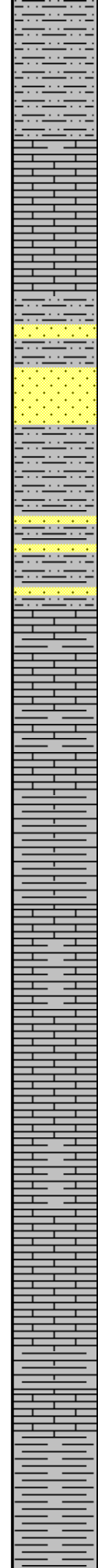
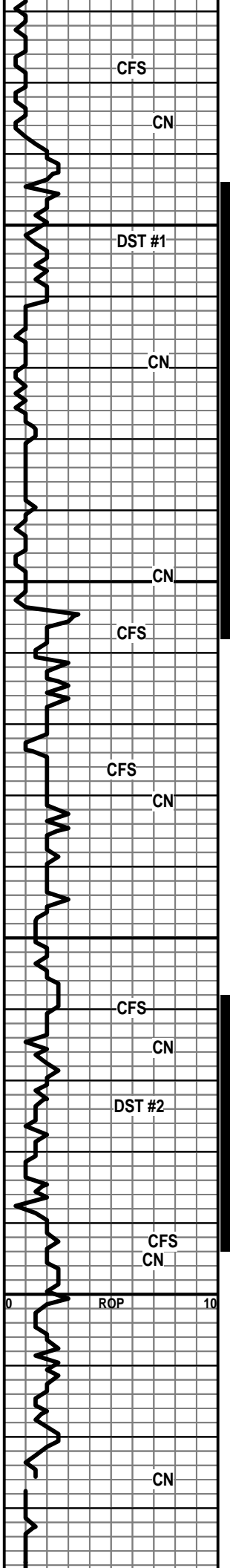
MUD DATA @ 2,648'
WT 8.75
VIS 49
FIL 8.0

DISPLACED STARCH
TO CHEMICAL MUD @
2650'

WT. 8.8
VIS 48

WT. 8.8
VIS 47

WT. 8.8
VIS 47



SH-LT GRY-V-SFT-GUMMY-SLTY

SH-DK GRY-BLKY-SLTY

STOTLER 2840' (-847')

LS-LT GRY-F-XLN-HD-DNS

LS-GRY-F-XLN-HD-TR FOSS-DNS

SS-FRSTY GRY-F-M-GRN-V-FRI-FR SRTEG-RNDED-TR
HEM TR GLAC-FR INTER-GRN POR-DK BLK STN IP-N
VIS FLOR-NO VIS CUT-TR GAS BUB

SH-LT GRY-V-F-SLTY

SS A.A. W/ SH-GRY-SLTY

TARKIO 2904' (-911')

LS-LT GRY-V-F-XLN-FOSS-HD-DNS

LS-OFF WHT-V-F-XLN-TR FOSS-HD-DNS

LS-OFF WHT/GRY-F-XLN-CHLKY-BRIT-OOL-
FOSS-DULL WHT MIN FLOR-NO VIS CUT

LS-OFF WHT/GRY-MOTT-F-XLN-BRIT-FOSS
FRAGS-SHLY-NO VIS POR-NO VIS FLOR-NO VIS
CUT-NO ODOR

LS-OFF WHT-F-XLN-BRIT-SNDY TEX-FOSS-OOL-BRIT
YEL FLOR-NO VIS CUT

LS-LT GRY-F-XLN-HD-DNS-CHRTY-NO VIS POR

POOR SAMPLE

LS-CRM-F-XLN-SNDY-FOSS-BRIT TO HD-TR
INTER-GRN POR IP TO NO VIS POR-BRITE WHT
FLOR-NO VIS CUT-NO ODOR

LS-LT GRY-F-XLN-SM BLK OOL-HD-DNS

LS-DK GRY-F-XLN-BLK FOSS FRAGS-TR INTER-GRN
POR-NO VIS FLOR-NO VIS CUT

LS-GRY-F-XLN-HD-FOSS-DNS

SH-LT GRY-GUMMY-SLTY

SH-LT GRY-SFT-SLTY-GUMMY

2850

2900

2950

3000

WT. 8.8
VIS 44

WT. 8.9
VIS 44

WT. 8.9
VIS 52

WT. 8.9
VIS 50

DST #1
2844'-2907'
IB-GD BLW BOB IN 30
SECS
FBLW-STRNG BLW
BOB IN 15 SECS

REC 150'
-DRILLING-MUD
60'-MUDDY WATER
150' WATER

FLOW 2 /CHOKE .13

MIN	PSIA	MCF/D
15	35.8	13.4
25	33.25	12.45
35	27.00	10.11
40	23.25	8.70

STRAP-
2397.75 PIPE
535.93 COLLARS
2933.68 BOARD
2932.49 MEASURE
1.19 1 FT SHORT TO
BOARD

MUD DATA @ 2,907
WT. 9.1
VIS 66
FIL 8.8

DST #2
2958'-2994'
INITIAL BLW-FR BLW
BLT TO 6 IN INTO THE
H2O
FINAL BLW-STRNG
BLW BLT TO THE BOB
IN 2 SEC AND DEC
REC-35 FT. DRILLING
MUD
5/60/30/60
SIP-1050.95-1024.25
IFP-37.28-40.30
FFP-46.54-48.32
IH-1486.27-1450.95

CFS

CN

DST #1

CN

CN

CFS

CFS

CN

CFS

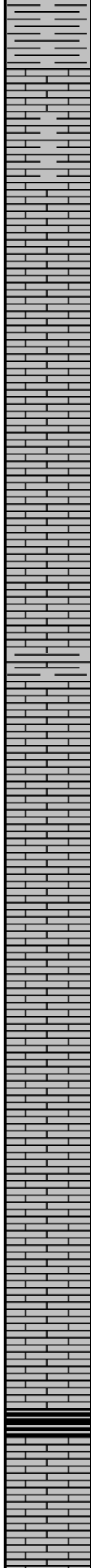
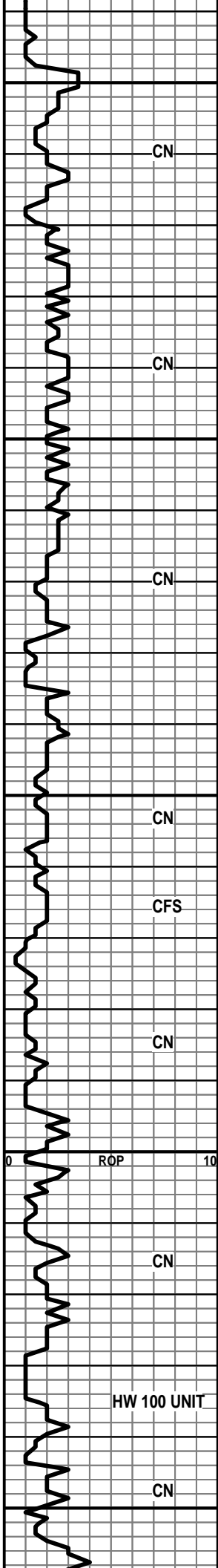
CN

DST #2

CFS
CN

ROP

CN



HOWARD 3048' (-1055')

3050 LS-GRY-F-XLN-HD-DNS

LS A.A. SHLY

LS-CRM-F-XLN-BRIT-FOSS-CHLKY IP-DULL WHT FLOR-NO VIS CUT

LS-GRY-F-XLN-FOSS FRAGS-SHLY-HD-DNS

LS-CRM/GRY-F-XLN-FOSS-SHELL-HD-DNS

3100

LS-GRY-F-XLN-SHLY-HD-DNS

MUD DATA @ 3,107'
WT. 9.1
VIS 78
FIL 8.0

LS A.A.

SH-GRY-BLKY-LMY

TOPEKA 3134' (-1141')

LS-CRM-F-XLN-FOSS-HD-DNS

3150

LS-OFF WHT-F-XLN-V-CHLKY-SFT-FOSS-NO VIS POR-DULL WHT MIN FLOR-NO VIS CUT

WT. 9.0
VIS 56

SH-BLK-CARB

POOR SAMPLE

LS-CRM/GRY-F-XLN-BRIT-FOSS-SHLY-TR FRAC POR-SCATT YEL FLOR-NO VIS CUT

WT. 9.0
VIS 58

LS-OFF WHT-F-XLN-CHLKY-SFT-FOSS-NO VIS POR-DULL WHT FLOR-NO VIS CUT

3200

LS-CRM-F-XLN-HD-DNS CHR TY

LS-OFF WHT-F-XLN-CHLKY-GUMMY-NO VIS POR-DULL WHT MIN FLOR-NO VIS CUT

LS-LT GRY-F-XLN-FOSS-HD-DNS W/ LOTS OF CHLK IN SAMPLE

LS-CRM-M-GRN-BRIT-FOSS-FR INTER-GRN POR-SCATT YEL FLOR-NO VIS CUT

SH-BLK-CARB

3250

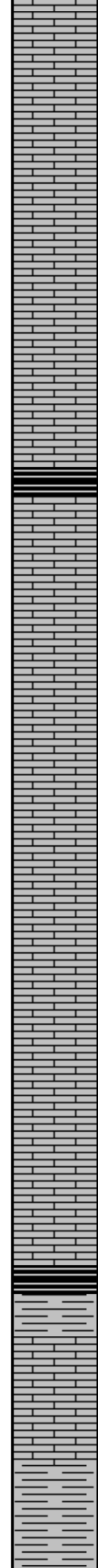
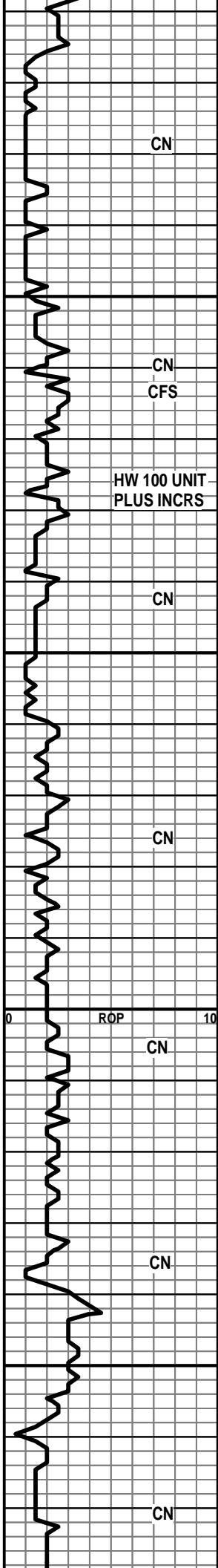
LS-GRY-F-XLN-FOSS-HD-DNS-CHR TY

WT. 9.1
VIS 59

SH-GRY-WAXY

HW 100 UNIT

0 ROP 10



LS-TN-F-XLN-HD-DNS W/ CHRT-GRY-OPQ-FOSS

LS-TN-F-XLN-BRIT-FOSS-OOL-CHLKY IP-NO VIS
POR-NO VIS SHOW

LS-A.A. CHLKY

LS-CRM-F-XLN-FOSS-TR FN OOL-MOLDIC POR-NO
VIS FLOR-NO VIS CUT

SH-BLK-CARB

3300 LS-CRM-M-GRN-BRIT-FOSS-TR SH-FR INTER-GRN
POR-NO VIS FLOR-NO VIS CUT

LS-CRM-F-XLN-CHLKY-OOL-FOSS-SCATT YEL
FLOR-NO VIS CUT

LS A.A.

LS-CRM-F-XLN-FOSS-PR TO FR VUG POR-NO VIS
FLOR-NO VIS CUT-NO VIS GAS BUB

LS-GRY-F-XLN-TR FOSS-HD-DNS

3350 LS-LT BRN-F-XLN-BRIT-OOL-FR INTER-GRN
POR-SCATT YEL FLOR-NO VIS CUT

SH-BLK-CARB

LS-TN-F-XLN-TR FOSS-HD-DNS

LS-TN-F-XLN-HD-DNS W/ CHLK IN TRAY

LS-OFF WHT-F-XLN-BRIT-CHLKY-FOSS-TR SH IMBD

3400 LS-TN-F-XLN-FOSS-OOL-HD-DNS TR OF CHLK IN
TRAY

LS-GRY-F-XLN-FOSS FRAGS-HD-DNS

LS-OFF WHT F-XLN-CHLKY IP-BRIT TO HD-DNS-DULL
WHT FLOR-NO VIS CUT

LS-TN-F-XLN-HD-DNSW/SH-BLK ON EDGE

HEEBNER 3433' (-1440')

SH-BLK-CARB

TORONTO 3453' (-1460')

3450 LS-DK TN-F-XLN-HD-DNS

DOUGLAS SH 3472' (-1479')

SLTSS-LT GRY-F-GRN-V-SHLY-TR HEM

WT. 8.9
VIS 51

WT. 9.0
VIS 49

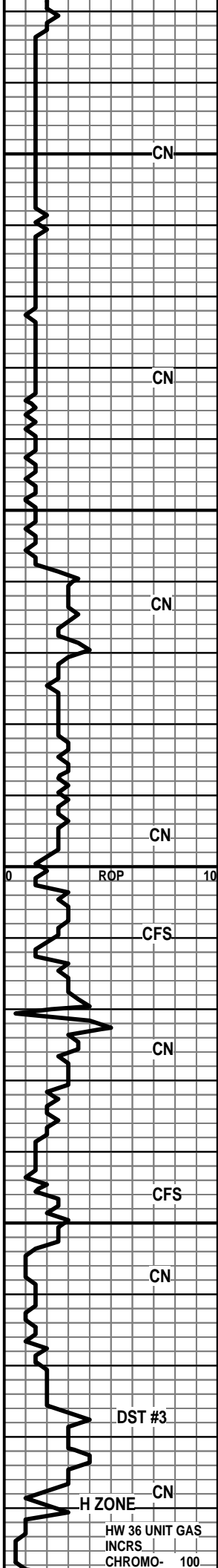
WT. 9.0
VIS 53

WT. 9.0
VIS 53

WT. 9.3
VIS 60

HW 100 UNIT GAS
INCRS/CHROMO 100
UNIT GAS INCRS

WT. 9.3
VIS 68



3500
3550
3600
3650

SH-LT GRY-SFT-SLTY

SH-LT GRY-SFT-SLTY

SH-LT GRY-SFT-SLTY

SH-LT GRY-SFT-SLTY

BROWN LS 3558' (-1565')
LS-DK BRN-F-XLN-FOSS-HD-DNS

LANSING/KC 3568' (-1575')
LS-OFF WHT-TN-F-XLN-CHLKY IP-BRIT TO HD-NO VIS
POR-DULL WHT FLOR-NO VIS CUT

LS-OFF WHT-F-XLN-HD-DNS W/ CHRT-LT
BRN-TRANS-FOSS-FRSH

LS-GRY-F-XLN-HD-DNS TR CHLK-TR
CHRT-TN-OPQ-FRSH

LS-GRY-F-XLN-OOL-FOSS-SHLY-BRITE YEL FLOR-NO
VIS SHOW

LS-OFF WHT-F-XLN-HD-DNS

LS-OFF WHT-F-XLN-BRIT-CHLKY IP-NO VIS POR-NO
VIS SHOW

SH-GRY-FRM-BLKY-LMY

LS-OFF WHT-F-XLN-BRIT-OOL-FOSS-CHLKY-TR LT
BRN SH STN IP-DULL WHT MIN FLOR-NO VIS CUT

LS A.A.

LS-GRY-TN-F-XLN-HD-DNS W/ CHRT-TN-OPQ-FRSH

LS-CRM-F-XLN-OOL-FR-GD OOL-MOLDIC -VUG
POR-LT BRN STN (20%)-GLD FLOR-GD STRM CUT-GD
STRM CUT-GD ODOR-TR CALC RE-XLN W/LT BRN
STN-FREE OIL

WT. 9.2
VIS 61

WT. 9.2
VIS 62

WT. 9.3
VIS 58

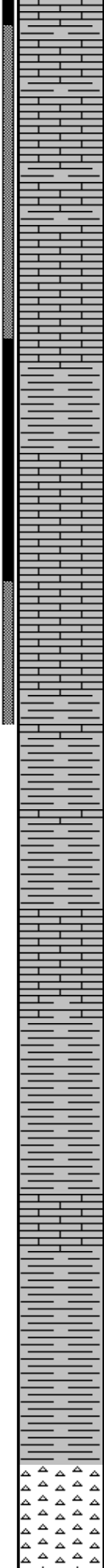
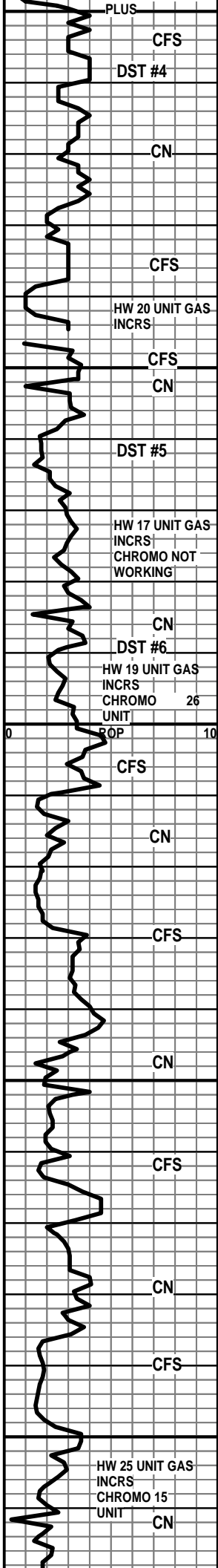
WT. 9.3
VIS 52

MUD DATA @ 3,658
WT. 9.45
VIS 47
FIL 14.4
DST#3
3683-3702
REC-30FT HEAVY OIL,
60' OIL CUT MUDDY
H2O-10% OIL-15%
MUD-75% H2O
150'-SLI OIL CUT
MUDDY H2O-5%
OIL-5% MUD-90% H2O
30/60/45/90
SIP-922.18-905.08
IFP-44.56-92.21
FFP-122.61-147.06

DST #3

H ZONE

HW 36 UNIT GAS
INCRS
CHROMO- 100



3700
 LS-OFF WHT-F-XLN-TR FOSS -HD DNS -DULL WHT
 FLOR-NO VIS SHOW-W/ 1 PC LS-OFF
 WHT-F-XLN-OOL-TR LT BRN STN

3750
 SH-LT GRY-SPLNTY

3800
 SH-DK GRY-BLKY-WAXY

3850
 SH-RED-GRY-YEL-V-SFT-GUMMY

3900
 VIOLA 3904' (-1911')

LS-TN-F-XLN-OOL-BRIT TO HD-NO VIS POR-NO VIS
 SHOW

LS-OFF WHT-F-XLN-OOL-TR LT BRN STN-BRITE YEL
 FLOR-TR LT FLSH CUT

LS-OFF WHT-F-XLN-OOL-TR LT BRN STN-BRITE YEL
 FLOR-TR PR STRM CUT-FNT ODOR

LS-OFF WHT-F-XLN-SM FOSS FRAGS-SM OOL-FR
 V-SM-VUG/PP POR-TR FRAC-CHRT-OFF
 WHT-TRANS-FRSH-DK BLK OIL-DULL YEL MIN
 FLOR-GD IMMED STRM CUT-FREE OIL-FNT ODOR

LS-CRM-F-XLN-OOL-PR FRAC POR-TR LT BRN
 STN-DULL YEL FLOR-FNT FLSH CUT-NO ODOR

LS=OFF WHT-F-XLN-BRIT-PR TO FR
 INTER-GRN/PP/SM VUG POR-HEAVY DK BRN OIL IN
 POOLS-NO VIS FLOR-GD CUT-FREE OIL-FNT ODOR

SH-SFT-GRY/RED-GUMMY-SLTY

SH-RED/GRY-V-SFT-GUMMY

LS-GRY-V-F-GRN-HD-DNS

LS A.A. SHLY

SH-GRY-RED-W/ CHRT-GRY-OPQ-FRSH

SH-RED-GRY-BLK-BLUE- W/ CHRT VARIG-OPQ-FRSH

CONGLOMERATE 3878'

SH-BRITE RED-DK GRY-W/ CHRT-VARIG-TR SS-

SH-VARIG-CHRT-VARIG-OPQ -FRSH W/ SOME
 TRIP-DK BLK STN-NO VIS FLOR-NO VIS CUT

CHRT-OFF WHT-OPQ-FRSH-SOME TRIP-FR PP
 POR-DK BLK STN-NO VIS FLOR-FR STRM CUT-FREE
 OIL

FFP-102.61-147.86
 HP-1793.69-1841.93

DST #4 3702'-3746'

IBLW-WK STDY BLW 1
 INCH
 FBLW-WK STDY 1/2
 INCH
 REC 70' OIL CUT 5% OIL-25% MUD-70%
 MUDDY H2O H2O
 120' MUDDY H2O W/ 1%OIL-15%MUD-84%
 SHOW OF OIL H2O
 180' SLI MUDDY H2O 5% MUD-95% H2O
 SIP-1050.29-1046.89-SF

MUD DATA @ 3,746'
 WT. 9.35
 VIS 49
 FIL 8.0

DST #5
 3746-3780'
 IBLW-WK SURF BLW
 AND DIED
 FBLW-NO BLW
 40 FT- SLI OIL CUT
 MUD-5% OIL-95%MUD
 40 FT-VSLI OIL CUT
 MUD-1 % OIL-99% MUD

WT. 9.0
 VIS 52

WT. 9.0
 VIS 53

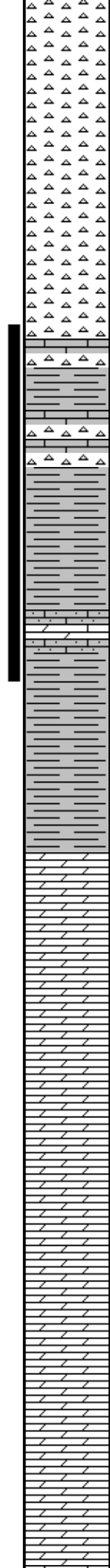
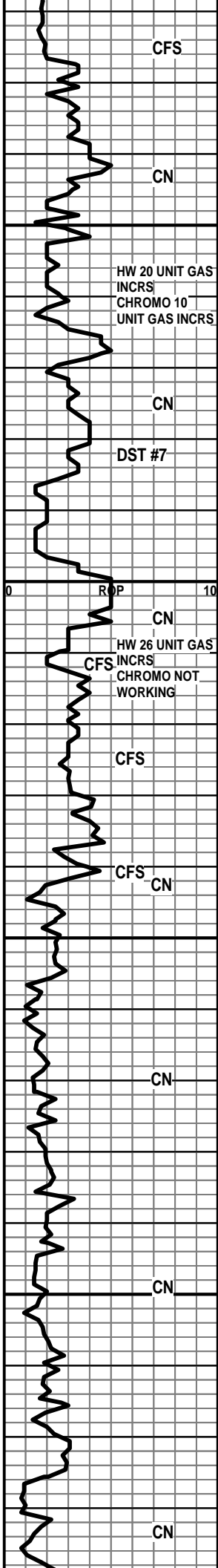
CFS
 CN

SIP-1149.95-1118.26
 IFP-41.19-59.73
 FFP-64.14-80.28
 HP-1813.68-1873.72

DST #6
 3780'-3800'
 IBLW-WK BLW BLT 1/2
 IN IN BUCKET
 FBLW-FR BLW BLT TO
 3 IN DECRS VERY WK
 SURF BLW
 REC-55% OIL-45% MUD
 15/30/15/30

WT. 9.1
 VIS 66

WT. 9.0
 VIS 57



CHRT A.A.

3950
CHRT-VARIG-MOSTLY OPQ-FRSH-TR TRIP -W/ DK BLK STN-PP POR-FREE OIL -GD ODOR

SH-VARIG-CHRT-VARIG-TR CHRT-TRIP-PP POR-DK BLK STN-FREE OIL-GD ODOR

SH-VARIG-CHRT-VARIG-CHRT-OFF WHT-TRIP-PP POR-TR LT BRN BUT MOSTLY DK BLK STN-NO VIS FLOR-TR STRM CUT-TR FREE OIL

SIMPSON SHALE 3985' (-1992')

SH-LT BLU-V-SFT-GUMMY-SLTY-W/SH VARIG-CHRT-VARIG

4000
SIMPSON SAND 4003' (2010')

SS-LT BRN-V-F-GRN-FRI TO HD-RNDED-WELL SRTE-DOLO CMT-ABUNDT DK BRN OIL STN-NO VIS FLOR-GD STRM CUT-FREE OIL-GD ODOR

SH-RED-GRN-BLU-BLK-SPLNTY-CHRT-VARIG-TR CHRT-OFF WHT-TRIP-PP POR-DK BLK STN-TR LG SND GRNS-LG PYR XLS

ARBUCKLE 4038' (-2045')

DOLO-TN-V-F-GRN-HD-DNS

DOLO-TN-V-F-GRN-BRIT-SLI CHLKY-TR INTER-GRN POR-NO VIS FLOR-NO VIS CUT

DOLO-TN-F-GRN-HD-DNS

DOLO-TN-F-XLN-OOL IP-NO VIS FLOR-NO VIS SHOW W/ CHRT-TN-OPQ-FRSH

DOLO-TN-F-XLN-OOL-HD-DNS-NO VIS FLOR-NO VIS SHOW

DOLO-CRM-F-XLN-OOL-HD-DNS

DOLO-CRM-F-XLN-OOL-HD DNS-W/ CHRT-GRY-OPQ-FRSH

4100
DOLO-CRM-CRS GRN-FR INTER-GRN/VUG POR-DULL WHT FLOR-NO VIS CUT

DOLO-TN-F-GRN-OOL-HD-DNS

DOLO-TN-F-GRN-SNDY TEX-CHLKY IP-PR-TNTER-GR POR/TR OOL-MOLDIC POR IP-DULL MIN FLOR-NO VIS SHOW

WT. 9.0
VIS 59

DST #7
3964-4014'
IBLW-WK BLW FOR 4 MIN AND DIED
FBLW-NO BLW
REC-2%OIL-98% MUD
SIP-415.79-393.18
IBLW-54.33-53.11
FBLW-54.19-54.05
HP-1946.54-1987.24

WT. 9.2
VIS 61

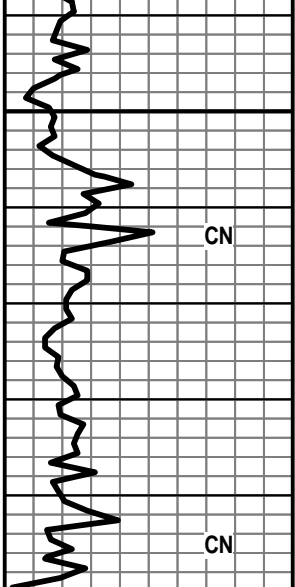
WT. 9.2
VIS 57

WT. 9.0
VIS 60

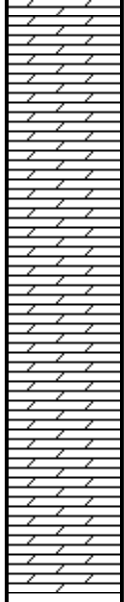
WT. 90
VIS 52

NO GAS INCRS

WT. 9.0
VIS 48



RTD-4199'
LTD-4198'



4150

4200

4250

00

DOLO-TN-GRN-HD-DNS W/ CHRT-TN-OPQ-FRSH IN TRAY

DOLO-OFF WHT-LG-GRN-FR TO GD INTER-GRN/VUG POR-DULL WHT MIN FLOR-NO VIS SHOW

DOLO-OFF WHT-V-F-XLN/GRN-HD-DNS W/ CHRT-OFF WHT-OPQ-FRSH

DOLO-TN-F-XLN-BRIT-OOL-GD OOL-MOLDIC POR-DULL YEL/WHT FLOR-NO VIS CUT

DOLO-OFF WHT-F-XLN-V-OOL-TR VUG POR-DULL WHT FLOR-NO VIS SHOW

DOLO-OFF WHT-F-XLN-HD-DNS W/ TR DOLO-CRM-F-XLN-OOL-FR OOL-MOLDIC POR-DULL WHT MIN FLOR-NO VIS SHOW

WT. 8.9
VIS 52
LCM 2#

Mud-Co / Service Mud Inc.

Operator **FG Holl** County **Pawnee** State **Kansas** Pump **6** x **14** x **60** SPM Casing Program **8 5/8** " @ **944** ft.
 Well **Blackwell Peterson 1-23** Location _____ GPM **7.75** BPM _____ " @ _____ ft.
 Contractor **Duke #2** Sec **25** TWP **22S** RNG **15W** D.P. **4.5** in. **191** FT/MIN R.A. _____ " @ _____ ft.
 Stockpoint **Pratt, Ks.** Date **5/10/2011** Engineer **Rick Hughes** Collar **6.25** in. **495** ft. **348** FT/MIN R.A. Total Depth **4200'** ft.

DATE	DEPTH	WEIGHT	VISCOSITY			GELS	pH	FILTRATION/FILTRATION ANALYSIS					SAND	RETORT			L.C.M.	Pump Press. PSI	CUMULATIVE COST	REMARKS AND TREATMENT	
			10 sec / 10 min.	Strip Meter	Yp			Sec API @ F	PV @ F	ml API	Cake 32nds	Pres. #/BBL		Cl ppm	Ca ppm	%					Solids %
5/10	0																			RURT	
5/12	1923	9.0	45	7	27	18/19	7.0	18.6	3		35M	Hvy		2.9		97.1				Drig. Starch displacement 1772	
5/13	2649	8.8	49	16	12	16/43	11.5	8.0	1		2,000	20		3.0		97.0				Drig. Chemical at 2570	
5/14	2907	9.1	66	23	17	20/47	10.5	8.8	1		6,400	20		5.4		94.6				CCH after DST 1	
5/15	3107	9.1	78	17	22	38/98	11.0	8.0	1		6,800	60		5.3		94.7				Drig. DST #2 @ 2994	
5/16	3658	9.5	47	10	12	37/62	10.0	14.4	2		7,200	100		7.7		92.3				Drig. DST #3 @ 3702	
5/17	3746	9.4	49	12	15	17/41	11.0	8.0	1		7,300	40		7.0		93.0				TO #/DST #4 DST #5 @ 3780	
5/18	3800	9.2	75	13	17	28/95	10.0	10.8	1		10m	60		5.8		94.2				CFS DST #6 @ 3800	
5/19	3998	9.2	56	12	13	21/91	10.5	10.2	1		9,500	40		5.5		94.5				Drig. DST #7 @ 4013'	
5/20	4111	9.0	47	10	11	13/38	10.5	12.0	1		8,900	60		4.5		95.5				Drig.	
5/21	4200																			Run 4 1/2 csg	
																					FINAL: Ran 7 DST's, Logs OK, Ran 4 1/2 csg
																					Reserve Pit, Chl content ppm: 33,000
																					Estimated Volume: <500 bbls free fluids

MUD-CO / SERVICE MUD INC.

100 S. Main Suite #310
Wichita, Ks. 67202
316/264-2814 Fax: 316/264-5024

DRILLING MUD RECAP

Materials	Sacks	Amount	Materials	Sacks	Amount	Amount
C/S HULLS	44					
CAUSTIC SODA	25					
DRILL PAK	6					
LIME	4					
MIL-GUARD	2					
PREMIUM GEL	404					
SALT CLAY	28					
SODA ASH	23					
STARCH	48					
SUPER LIG	20					
						Total Mud Cost
						Trucking Cost
						Trucking Surcharge
						Taxes
						TOTAL COST



BASIC
ENERGY SERVICES
PRESSURE PUMPING & WIRELINE

10244 NE Hwy. 61
P.O. Box 8613
Pratt, Kansas 67124
Phone 620-672-1201

FIELD SERVICE TICKET
1718 04208 A

DATE _____ TICKET NO. _____

DATE OF JOB 5-11-11 DISTRICT Pratt		NEW WELL <input checked="" type="checkbox"/> OLD WELL <input type="checkbox"/> PROD <input type="checkbox"/> INJ <input type="checkbox"/> WDW <input type="checkbox"/> CUSTOMER ORDER NO.:								
CUSTOMER F. B. Holl		LEASE Blackwell-Peterson WELL NO. 1-23								
ADDRESS		COUNTY Pawnee STATE KS								
CITY STATE		SERVICE CREW Orlando, Mitchell-Phy								
AUTHORIZED BY		JOB TYPE: CNW-8 5/8 Surface								
EQUIPMENT#	HRS	EQUIPMENT#	HRS	EQUIPMENT#	HRS	TRUCK CALLED	DATE	AM	PM	TIME
27283	1/2						5-11-11			5:00
33708-20920	1/2									8:00
19960-19918	1/2									9:30
										10:00
										10:30
										55

CONTRACT CONDITIONS: (This contract must be signed before the job is commenced or merchandise is delivered).

The undersigned is authorized to execute this contract as an agent of the customer. As such, the undersigned agrees and acknowledges that this contract for services, materials, products, and/or supplies includes all of and only those terms and conditions appearing on the front and back of this document. No additional or substitute terms and/or conditions shall become a part of this contract without the written consent of an officer of Basic Energy Services LP.

SIGNED: *John D. Armstrong*
(WELL OWNER, OPERATOR, CONTRACTOR OR AGENT)

ITEM/PRICE REF. NO.	MATERIAL, EQUIPMENT AND SERVICES USED	UNIT	QUANTITY	UNIT PRICE	\$ AMOUNT
CP101	Acua Blend	SK	200		
CP102	Common	SK	200		
CC102	Cello Flake	Lb	100		
CC109	Calcium-Chloride	Lb	1128		
CC200	Cement Gel	Lb	376		
CF105	Top Rubber Cement Plug 8 5/8"	ea	1		
CF153	Centralizer 8 5/8"	ea	3		
E100	Pickup mileage	Mi	55		
E101	Heavy Equipment mileage	Mi	110		
E113	Bulk Delivery	Tn	1034		
CE201	Depth Charge	ea	1		
CE240	Cement Service Charge	SK	400		
CE504	Plug Container	ea	1		
5003	Service Supervisor	ea	1		

SUB TOTAL
DLS

CHEMICAL / ACID DATA:			

SERVICE & EQUIPMENT	%TAX ON \$	
MATERIALS	%TAX ON \$	
TOTAL		

SERVICE REPRESENTATIVE Steve Orlando	THE ABOVE MATERIAL AND SERVICE ORDERED BY CUSTOMER AND RECEIVED BY: <i>John D. Armstrong</i> (WELL OWNER OPERATOR CONTRACTOR OR AGENT)
---	---

FIELD SERVICE ORDER NO. _____



BASIC
ENERGY SERVICES
PRESSURE PUMPING & WIRELINE

10244 NE Hwy. 61
P.O. Box 8613
Pratt, Kansas 67124
Phone 620-672-1201

FIELD SERVICE TICKET
1718 04059 A

DATE _____ TICKET NO. _____

DATE OF JOB: 5-21-11	DISTRICT: Pratt	NEW WELL <input checked="" type="checkbox"/>	OLD WELL <input type="checkbox"/>	PROD <input type="checkbox"/>	INJ <input type="checkbox"/>	WDW <input type="checkbox"/>	CUSTOMER ORDER NO.:		
CUSTOMER: FG HOLL		LEASE: Black Well / Potomac		WELL NO.: 25					
ADDRESS:		COUNTY: Stafford		STATE: KS					
CITY:		STATE:		SERVICE CREW: Melvin Sullivan					
AUTHORIZED BY:		JOB TYPE: CNU 4 1/2 Long string							
EQUIPMENT#	HRS	EQUIPMENT#	HRS	EQUIPMENT#	HRS	TRUCK CALLED	DATE	AM	TIME
27463	40						5-21-11	PM	2:17
19826	40					ARRIVED AT JOB	5-21-11	AM	6:00
27400						START OPERATION	5-21-11	AM	11:10
						FINISH OPERATION	5-21-11	AM	11:45
						RELEASED	5-21-11	AM	12:30
						MILES FROM STATION TO WELL			55

CONTRACT CONDITIONS: (This contract must be signed before the job is commenced or merchandise is delivered).

The undersigned is authorized to execute this contract as an agent of the customer. As such, the undersigned agrees and acknowledges that this contract for services, materials, products, and/or supplies includes all of and only those terms and conditions appearing on the front and back of this document. No additional or substitute terms and/or conditions shall become a part of this contract without the written consent of an officer of Basic Energy Services LP.

SIGNED: Jeremy Smartt
(WELL OWNER, OPERATOR, CONTRACTOR OR AGENT)

ITEM/PRICE REF. NO.	MATERIAL, EQUIPMENT AND SERVICES USED	UNIT	QUANTITY	UNIT PRICE	\$ AMOUNT
CP 105	AA2 Cement	SK	175		
CP 103	60/40 P02	SK	100		
CC 102	cello-flake	lb	44		
CC 105	De Fagmer	lb	42		
CC 111	SALT	lb	786		
CC 115	Gas Block	lb	165		
CC 129	FLA 322	lb	165		
CC 201	Gilsonite	lb	2250		
CF 606	Latch Down	eq	1		
CF 1250	Auto Fill Float shoe	eq	1		
CF 1650	Turbolizer	eq	10		
CF 1900	4 1/2 Basket	eq	1		
CF 2002	Scratchers	eq	20		
CC 154	Super Flush	gal	500		
E 100	Mileage	Mi	55		
E 101	Heavy Equipment mileage	Mi	110		
E 113	Bulk Delivery	TM	690		
CE 205	Depth Charge	Yhr	1		
CE 240	Blending & mixing	SK	275		
SUB TOTAL					

CHEMICAL / ACID DATA:			

SERVICE & EQUIPMENT	%TAX ON \$	
MATERIALS	%TAX ON \$	
TOTAL		

SERVICE REPRESENTATIVE: [Signature] THE ABOVE MATERIAL AND SERVICE ORDERED BY CUSTOMER AND RECEIVED BY: Jeremy Smartt
(WELL OWNER OPERATOR CONTRACTOR OR AGENT)

FIELD SERVICE ORDER NO. _____



BASIC
ENERGY SERVICES
PRESSURE PUMPING & WIRELINE

10244 NE Hwy. 61
P.O. Box 8613
Pratt, Kansas 67124
Phone 620-672-1201

FIELD SERVICE TICKET

~~1718-04030-A~~

Continuation of

DATE TICKET NO. 04059A

DATE OF JOB	<u>5-21-11</u>	DISTRICT	<u>Pratt</u>	NEW WELL <input checked="" type="checkbox"/>	OLD WELL <input type="checkbox"/>	PROD <input type="checkbox"/>	INJ <input type="checkbox"/>	WDW <input type="checkbox"/>	CUSTOMER ORDER NO.:
CUSTOMER	<u>FG HOLL</u>			LEASE	<u>Blackwell / Paterson</u> WELL NO. <u>1-25</u>				
ADDRESS				COUNTY	<u>Stafford</u> STATE <u>KS</u>				
CITY	STATE			SERVICE CREW	<u>Melson Sullivan McGraw</u>				
AUTHORIZED BY				JOB TYPE:					
EQUIPMENT#	HRS	EQUIPMENT#	HRS	EQUIPMENT#	HRS	TRUCK CALLED	DATE	AM/PM	TIME
<u>27463</u>							<u>5-20-11</u>	<u>AM</u>	<u>10:17</u>
<u>19826 19860</u>						ARRIVED AT JOB	<u>5-21-11</u>	<u>AM</u>	<u>6:00</u>
<u>37900</u>						START OPERATION	<u>5-21-11</u>	<u>AM</u>	
						FINISH OPERATION	<u>5-21-11</u>	<u>AM</u>	
						RELEASED	<u>5-21-11</u>	<u>AM</u>	
						MILES FROM STATION TO WELL			<u>55</u>

CONTRACT CONDITIONS: (This contract must be signed before the job is commenced or merchandise is delivered).

The undersigned is authorized to execute this contract as an agent of the customer. As such, the undersigned agrees and acknowledges that this contract for services, materials, products, and/or supplies includes all of and only those terms and conditions appearing on the front and back of this document. No additional or substitute terms and/or conditions shall become a part of this contract without the written consent of an officer of Basic Energy Services LP.

SIGNED: Jerry Sneath
(WELL OWNER, OPERATOR, CONTRACTOR OR AGENT)

ITEM/PRICE REF. NO.	MATERIAL, EQUIPMENT AND SERVICES USED	UNIT	QUANTITY	UNIT PRICE	\$ AMOUNT
CE 501	<u>Swivel Pentak</u>	<u>eq</u>	<u>1</u>		
CE 504	<u>Plug container</u>	<u>JOB</u>	<u>1</u>		
S 003	<u>Service supervisor</u>	<u>eq</u>	<u>1</u>		

CHEMICAL / ACID DATA:			

SUB TOTAL		<u>K6</u>
SERVICE & EQUIPMENT	%TAX ON \$	
MATERIALS	%TAX ON \$	
TOTAL		

Thank you

SERVICE REPRESENTATIVE <u>Robert J. Sullivan</u>	THE ABOVE MATERIAL AND SERVICE ORDERED BY CUSTOMER AND RECEIVED BY: <u>Jerry Sneath</u> (WELL OWNER OPERATOR, CONTRACTOR OR AGENT)
--	---

FIELD SERVICE ORDER NO.



BASIC
ENERGY SERVICES
PRESSURE PUMPING & WIRELINE

10244 NE Hwy. 61
P.O. Box 8613
Pratt, Kansas 67124
Phone 620-672-1201

FIELD SERVICE TICKET
1718 04514 A

DATE _____ TICKET NO. _____

DATE OF JOB <u>6-24-11</u> DISTRICT <u>Pratt</u>		NEW WELL <input checked="" type="checkbox"/> OLD WELL <input type="checkbox"/> PROD <input type="checkbox"/> INJ <input type="checkbox"/> WDW <input type="checkbox"/> CUSTOMER ORDER NO. _____							
CUSTOMER <u>F.C. Hull</u>		LEASE <u>Blackwell-Peterson</u>		WELL NO. <u>125</u>					
ADDRESS _____		COUNTY <u>Pawnee</u>		STATE <u>KS</u>					
CITY _____ STATE _____		SERVICE CREW <u>Uhlir, W., McGraw</u>							
AUTHORIZED BY _____		JOB TYPE: <u>CNLU - Dog Squeeze</u>							
EQUIPMENT#	HRS	EQUIPMENT#	HRS	EQUIPMENT#	HRS	TRUCK CALLED	DATE	AM/PM	TIME
<u>27285</u>	<u>5 1/2</u>						<u>6-24-11</u>		<u>8:00</u>
<u>27463</u>	<u>5 1/2</u>								<u>7:00</u>
<u>19960-19913</u>	<u>2</u>								<u>8:00</u>
									<u>1:30</u>
									<u>2:00</u>
						MILES FROM STATION TO WELL	<u>1/2</u>		

CONTRACT CONDITIONS: (This contract must be signed before the job is commenced or merchandise is delivered).

The undersigned is authorized to execute this contract as an agent of the customer. As such, the undersigned agrees and acknowledges that this contract for services, materials, products, and/or supplies includes all of and only those terms and conditions appearing on the front and back of this document. No additional or substitute terms and/or conditions shall become a part of this contract without the written consent of an officer of Basic Energy Services LP.

SIGNED: Rob Jones
(WELL OWNER, OPERATOR, CONTRACTOR OR AGENT)

ITEM/PRICE REF. NO.	MATERIAL, EQUIPMENT AND SERVICES USED	UNIT	QUANTITY	UNIT PRICE	\$ AMOUNT
<u>CP100</u>	<u>Common</u>	<u>SK</u>	<u>75</u>		
<u>CC132</u>	<u>C-53k</u>	<u>bu</u>	<u>5</u>		
<u>E100</u>	<u>Pickup mileage</u>	<u>m</u>	<u>40</u>		
<u>E101</u>	<u>Heavy Equipment</u>	<u>mi</u>	<u>90</u>		
<u>E113</u>	<u>Bulk Delivery</u>	<u>lb</u>	<u>160</u>		
<u>CE204</u>	<u>Depth Charge 3001-4000</u>	<u>ea</u>	<u>1</u>		
<u>CE240</u>	<u>Cement Service Charge</u>	<u>SK</u>	<u>75</u>		
<u>S003</u>	<u>Service Supervisor</u>	<u>ea</u>	<u>1</u>		
<u>CE500</u>	<u>Cement Squeeze Material</u>	<u>ea</u>	<u>1</u>		

SUB TOTAL
ALS

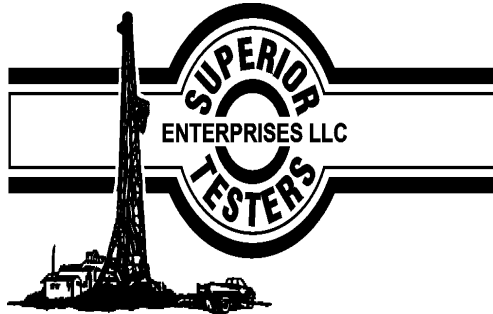
CHEMICAL / ACID DATA:			

SERVICE & EQUIPMENT	%TAX ON \$
MATERIALS	%TAX ON \$

TOTAL

SERVICE REPRESENTATIVE <u>Steve Orbits</u>	THE ABOVE MATERIAL AND SERVICE ORDERED BY CUSTOMER AND RECEIVED BY: <u>Rob Jones</u> (WELL OWNER OPERATOR CONTRACTOR OR AGENT)
--	---

FIELD SERVICE ORDER NO.



DRILL STEM TEST REPORT

Prepared For: **F.G.Holl Company L.L.C.**

9431 East Central Suite 100
Wichita, Kansas 67206-2563

ATTN: Rene Husted

25-22s-15w

Blackwell-Peterson Unit #1-25

Start Date: 2011.05.17 @ 06:50:00

End Date: 2011.05.17 @ 00:00:00

Job Ticket #: 16579 DST #: 4

Superior Testers Enterprises LLC
PO Box 138 Great Bend KS 67530
1-800-792-6902

Printed: 2011.05.17 @ 14:10:54



DRILL STEM TEST REPORT

F.G.Holl Company L.L.C.

Blackwell-Peterson Unit #1-25

9431 East Central Suite 100
Wichita, Kansas 67206-2563

25-22s-15w

Job Ticket: 16579

DST#: 4

ATTN: Rene Husted

Test Start: 2011.05.17 @ 06:50:00

GENERAL INFORMATION:

Formation: **Kansas City "I & J"**

Deviated: No Whipstock: ft (KB)

Time Tool Opened: 00:00:00

Time Test Ended: 00:00:00

Test Type: Conventional Bottom Hole (Initial)

Tester: Gene Budig

Unit No: 3335

Interval: 3702.00 ft (KB) To 3746.00 ft (KB) (TVD)

Reference Elevations: 1996.00 ft (KB)

Total Depth: 3746.00 ft (KB) (TVD)

1988.00 ft (CF)

Hole Diameter: 7.88 inches Hole Condition: Fair

KB to GR/CF: 8.00 ft

Serial #: 27799 Outside

Press @ Run Depth: 1044.75 psia @ 3743.00 ft (KB)

Capacity: 5000.00 psia

Start Date: 2011.05.17 End Date: 2011.05.17

Last Calib.: 2011.05.17

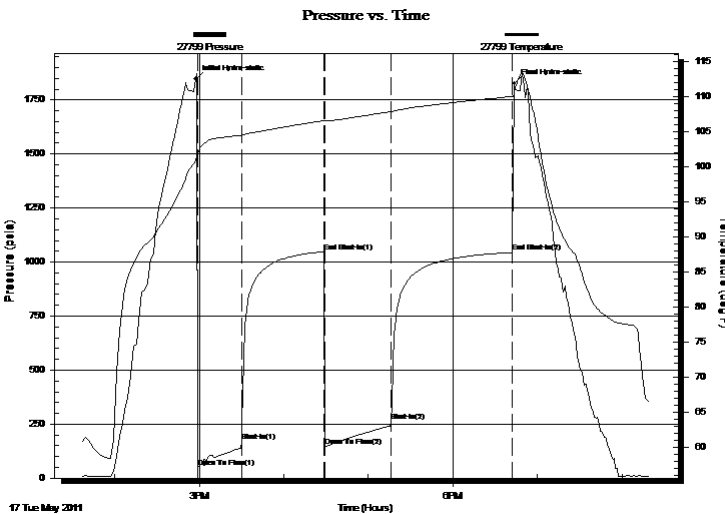
Start Time: 13:37:21 End Time: 20:19:21

Time On Btm: 2011.05.17 @ 14:57:21

Time Off Btm: 2011.05.17 @ 18:43:21

TEST COMMENT: 1st Opening 30 Minutes-Weak steady 1 inch blow
1st Shut-In 60 Minute-No blow back
2nd Shut-In 45 Minutes-Weak steady 1/2 inch blow
2nd shut-In 90 Minutes-No blow back

PRESSURE SUMMARY



Time (Min.)	Pressure (psia)	Temp (deg F)	Annotation
0	1844.54	100.88	Initial Hydro-static
2	48.76	101.96	Open To Flow (1)
33	170.57	104.50	Shut-In(1)
91	1048.55	106.60	End Shut-In(1)
92	147.73	106.61	Open To Flow (2)
139	262.95	107.85	Shut-In(2)
225	1044.75	110.01	End Shut-In(2)
226	1825.98	110.45	Final Hydro-static

Recovery

Length (ft)	Description	Volume (bbl)
70.00	oil cut muddy w ater	0.98
0.00	5%Oil 25%Mud 70%Water	0.00
120.00	Slightly muddy w ater w ith a trace of oil	1.68
0.00	1%Oil 15%mud 84%Water	0.00
180.00	Slightly muddy w ater	2.52
0.00	Chlorides 66000	0.00

Gas Rates

Choke (inches)	Pressure (psia)	Gas Rate (Mcf/d)



DRILL STEM TEST REPORT

F.G.Holl Company L.L.C.

Blackwell-Peterson Unit #1-25

9431 East Central Suite 100
Wichita, Kansas 67206-2563

25-22s-15w

Job Ticket: 16579

DST#: 4

ATTN: Rene Husted

Test Start: 2011.05.17 @ 06:50:00

GENERAL INFORMATION:

Formation: **Kansas City "I & J"**

Deviated: No Whipstock: ft (KB)

Time Tool Opened: 00:00:00

Time Test Ended: 00:00:00

Test Type: Conventional Bottom Hole (Initial)

Tester: Gene Budig

Unit No: 3335

Interval: 3702.00 ft (KB) To 3746.00 ft (KB) (TVD)

Reference Elevations: 1996.00 ft (KB)

Total Depth: 3746.00 ft (KB) (TVD)

1988.00 ft (CF)

Hole Diameter: 7.88 inches Hole Condition: Fair

KB to GR/CF: 8.00 ft

Serial #: 26182 Inside

Press @ Run Depth: 1046.89 psia @ 3742.00 ft (KB)

Capacity: 5000.00 psia

Start Date: 2011.05.17 End Date: 2011.05.17

Last Calib.: 2011.05.17

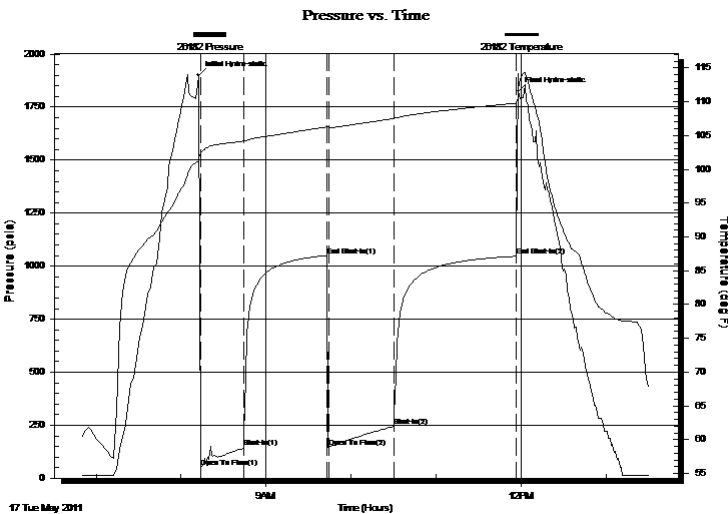
Start Time: 06:50:30 End Time: 13:31:00

Time On Btm: 2011.05.17 @ 08:12:00

Time Off Btm: 2011.05.17 @ 11:58:00

TEST COMMENT: 1st Opening 30 Minutes-Weak steady 1 inch blow
1st Shut-In 60 Minute-No blow back
2nd Shut-In 45 Minutes-Weak steady 1/2 inch blow
2nd shut-In 90 Minutes-No blow back

PRESSURE SUMMARY



Time (Min.)	Pressure (psia)	Temp (deg F)	Annotation
0	1899.88	101.33	Initial Hydro-static
2	52.79	102.29	Open To Flow (1)
32	144.31	104.19	Shut-In(1)
91	1050.29	106.27	End Shut-In(1)
92	146.45	106.23	Open To Flow (2)
138	243.84	107.52	Shut-In(2)
225	1046.89	109.81	End Shut-In(2)
226	1823.66	111.84	Final Hydro-static

Recovery

Length (ft)	Description	Volume (bbl)
70.00	oil cut muddy w ater	0.98
0.00	5%Oil 25%Mud 70%Water	0.00
120.00	Slightly muddy w ater w ith a trace of oil	1.68
0.00	1%Oil 15%mud 84%Water	0.00
180.00	Slightly muddy w ater	2.52
0.00	Chlorides 66000	0.00

Gas Rates

Choke (inches)	Pressure (psia)	Gas Rate (Mcf/d)



DRILL STEM TEST REPORT

TOOL DIAGRAM

F.G.Holl Company L.L.C.

Blackwell-Peterson Unit #1-25

9431 East Central Suite 100
Wichita, Kansas 67206-2563

25-22s-15w

Job Ticket: 16579

DST#: 4

ATTN: Rene Husted

Test Start: 2011.05.17 @ 06:50:00

Tool Information

Drill Pipe:	Length: 3680.00 ft	Diameter: 3.80 inches	Volume: 51.62 bbl	Tool Weight: 2000.00 lb
Heavy Wt. Pipe:	Length: 0.00 ft	Diameter: 2.86 inches	Volume: 0.00 bbl	Weight set on Packer: 20000.00 lb
Drill Collar:	Length: 0.00 ft	Diameter: 2.25 inches	Volume: 0.00 bbl	Weight to Pull Loose: 45000.00 lb
			<u>Total Volume: 51.62 bbl</u>	Tool Chased 0.00 ft
Drill Pipe Above KB:	7.00 ft			String Weight: Initial 40000.00 lb
Depth to Top Packer:	3702.00 ft			Final 40000.00 lb
Depth to Bottom Packer:	ft			
Interval between Packers:	44.00 ft			
Tool Length:	73.00 ft			
Number of Packers:	2	Diameter: 6.75 inches		

Tool Comments:

Tool Description	Length (ft)	Serial No.	Position	Depth (ft)	Accum. Lengths
Shut-In Tool	5.00			3678.00	
Hydraulic Tool	5.00			3683.00	
Jars	7.00			3690.00	
Safety Joint	2.00		Fluid	3692.00	
Packer	5.00			3697.00	29.00 Bottom Of Top Packer
Packer	5.00			3702.00	
Anchor	39.00			3741.00	
Recorder	1.00	91718	Inside	3742.00	
Recorder	1.00	93335	Outside	3743.00	
Bull Plug	3.00			3746.00	44.00 Bottom Packers & Anchor
Total Tool Length:	73.00				



DRILL STEM TEST REPORT

FLUID SUMMARY

F.G.Holl Company L.L.C.

Blackwell-Peterson Unit #1-25

9431 East Central Suite 100
Wichita, Kansas 67206-2563

25-22s-15w

Job Ticket: 16579

DST#: 4

ATTN: Rene Husted

Test Start: 2011.05.17 @ 06:50:00

Mud and Cushion Information

Mud Type: Gel Chem
Mud Weight: 9.00 lb/gal
Viscosity: 49.00 sec/qt
Water Loss: 7.98 in³
Resistivity: ohm.m
Salinity: 7300.00 ppm
Filter Cake: 1.00 inches

Cushion Type:
Cushion Length: ft
Cushion Volume: bbl
Gas Cushion Type:
Gas Cushion Pressure: psia

Oil API: deg API
Water Salinity: ppm

Recovery Information

Recovery Table

Length ft	Description	Volume bbl
70.00	oil cut muddy water	0.982
0.00	5%Oil 25%Mud 70%Water	0.000
120.00	Slightly muddy water with a trace of oil	1.683
0.00	1%Oil 15%mud 84%Water	0.000
180.00	Slightly muddy water	2.525
0.00	Chlorides 66000	0.000
0.00	Resisitivity 1.2 @ 70 Degrees	0.000

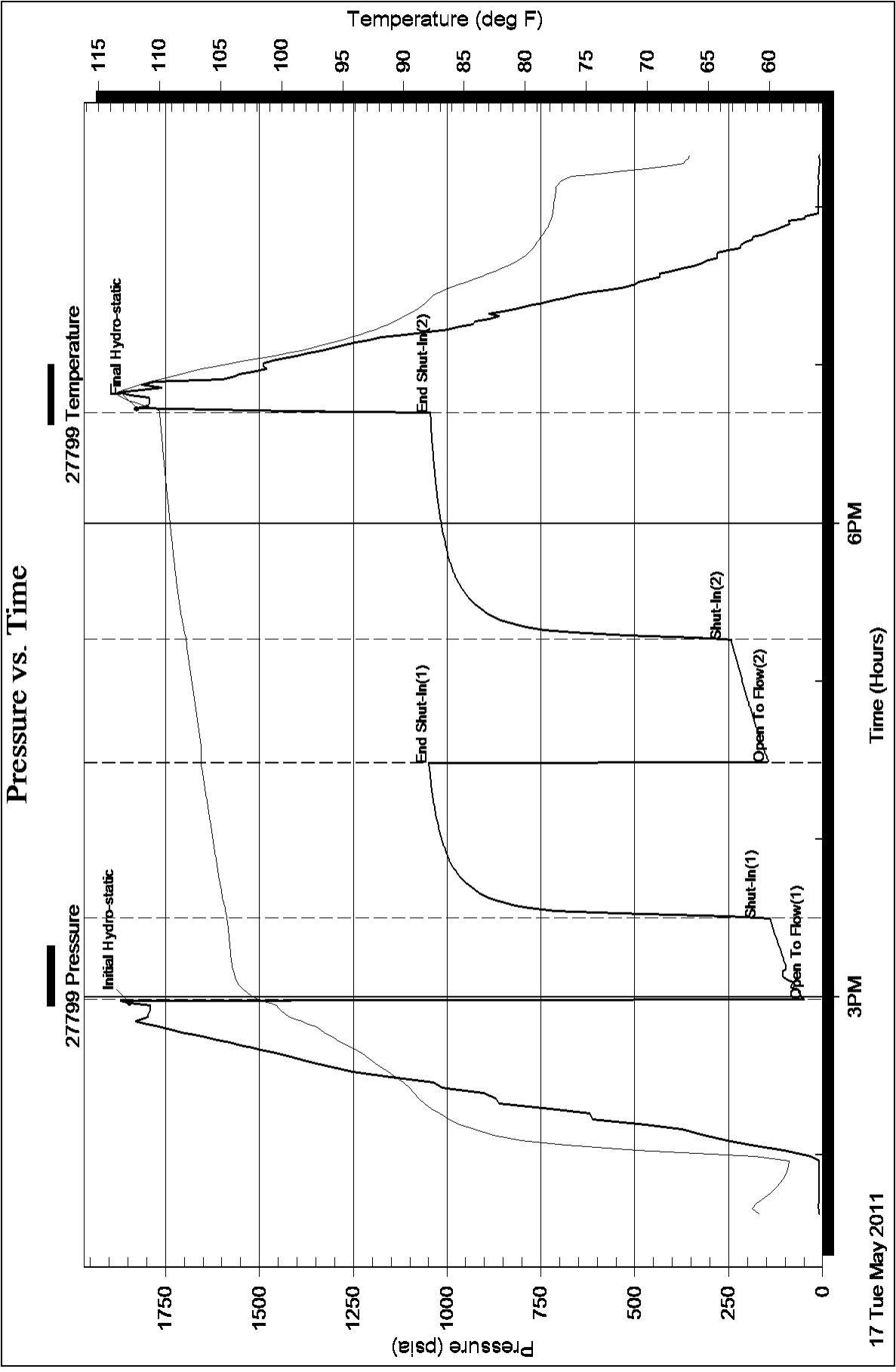
Total Length: 370.00 ft Total Volume: 5.190 bbl

Num Fluid Samples: 0 Num Gas Bombs: 0 Serial #:

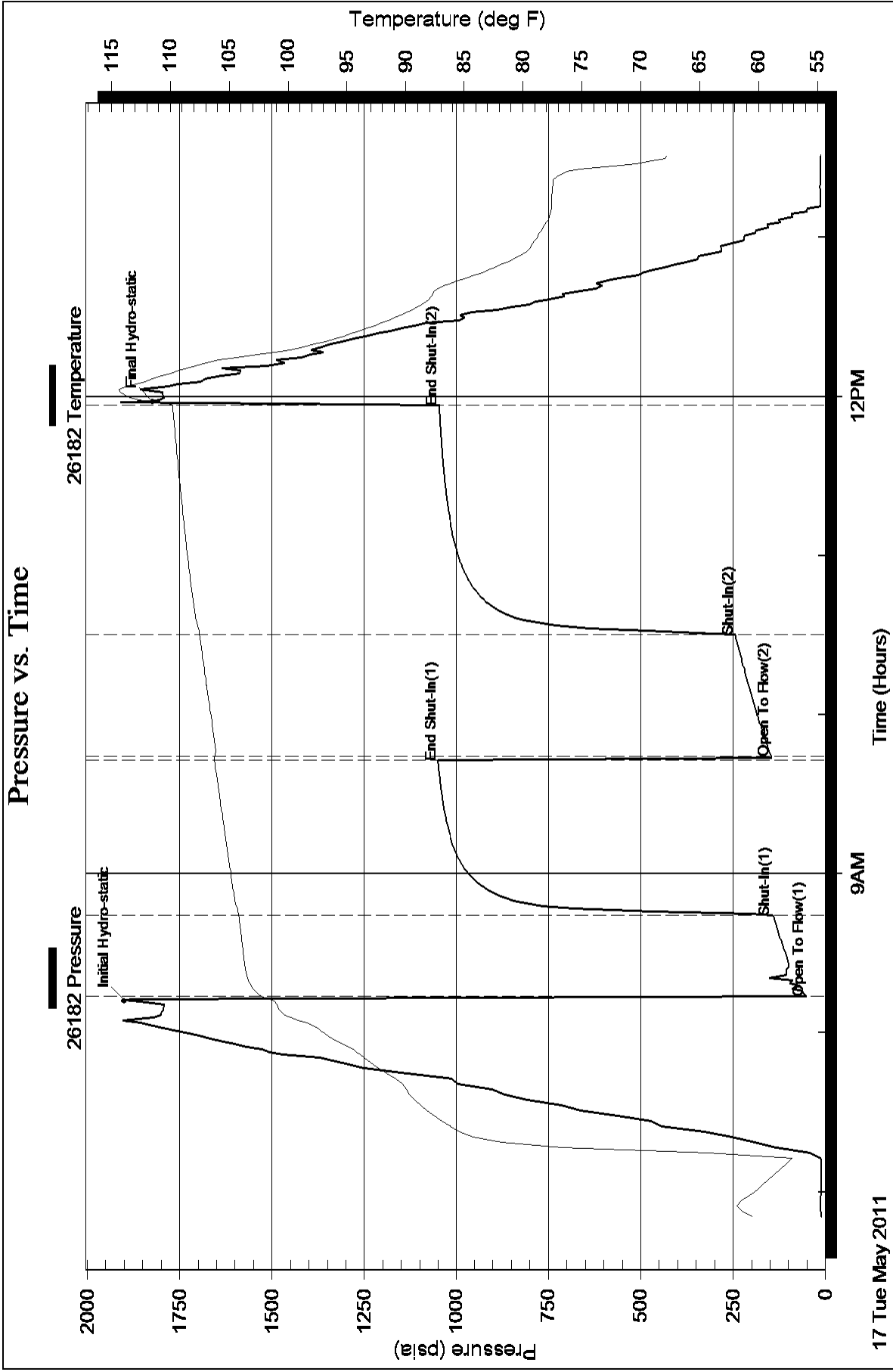
Laboratory Name: Laboratory Location:

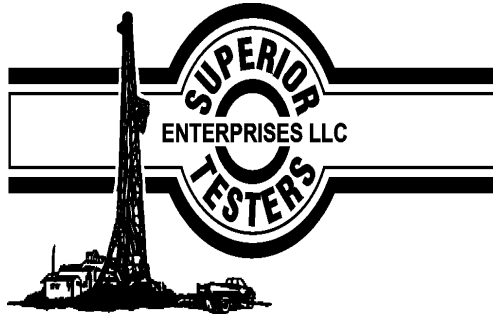
Recovery Comments:

Pressure vs. Time



Pressure vs. Time





DRILL STEM TEST REPORT

Prepared For: **F.G.Holl Company L.L.C.**

9431 East Central Suite 100
Wichita, Kansas 67206-2563

ATTN: Rene Husted

25-22s-15w

Blackwell-Peterson Unit #1-25

Start Date: 2011.05.17 @ 09:15:00

End Date: 2011.05.17 @ 00:00:00

Job Ticket #: 16580 DST #: 5

Superior Testers Enterprises LLC
PO Box 138 Great Bend KS 67530
1-800-792-6902

Printed: 2011.05.20 @ 04:38:37



DRILL STEM TEST REPORT

F.G.Holl Company L.L.C.

Blackwell-Peterson Unit #1-25

9431 East Central Suite 100
Wichita, Kansas 67206-2563

25-22s-15w

Job Ticket: 16580

DST#: 5

ATTN: Rene Husted

Test Start: 2011.05.17 @ 09:15:00

GENERAL INFORMATION:

Formation: **Kansas City "K"**

Deviated: No Whipstock: ft (KB)

Time Tool Opened: 00:00:00

Time Test Ended: 00:00:00

Test Type: Conventional Bottom Hole (Initial)

Tester: Gene Budig

Unit No: 3325

Interval: 3746.00 ft (KB) To 3780.00 ft (KB) (TVD)

Reference Elevations: 1996.00 ft (KB)

Total Depth: 3780.00 ft (KB) (TVD)

1988.00 ft (CF)

Hole Diameter: 7.88 inches Hole Condition: Fair

KB to GR/CF: 8.00 ft

Serial #: 26180 Inside

Press @ RunDepth: 1118.26 psia @ 3776.00 ft (KB)

Capacity: 5000.00 psia

Start Date: 2011.05.18 End Date: 2011.05.18

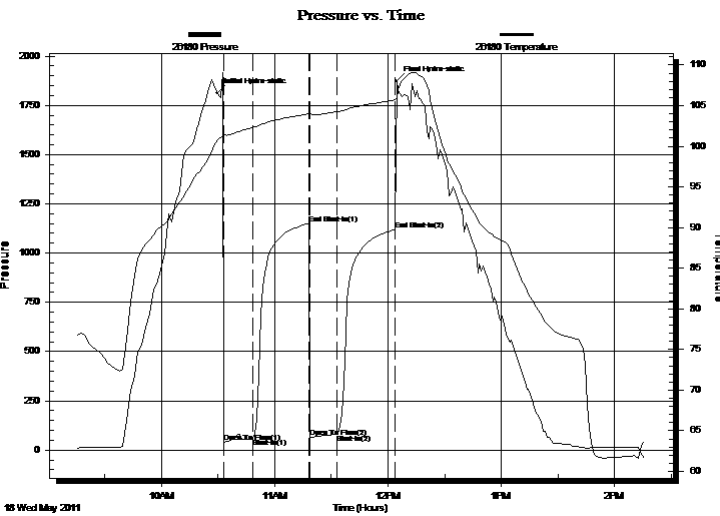
Last Calib.: 2011.05.18

Start Time: 09:15:30 End Time: 14:16:00

Time On Btm: 2011.05.18 @ 10:29:30

Time Off Btm: 2011.05.18 @ 12:04:30

TEST COMMENT: 1st Opening 15 Minutes-Weak blow for 11 minutes and died
 1st Shut-In 30 Minutes-No blow back
 2nd Opening 15 Minutes-No blow
 2nd Shut-In 30 Minutes-No blow back



PRESSURE SUMMARY

Time (Min.)	Pressure (psia)	Temp (deg F)	Annotation
0	1813.68	100.77	Initial Hydro-static
4	41.19	101.37	Open To Flow (1)
19	59.73	102.34	Shut-In(1)
49	1149.95	103.98	End Shut-In(1)
49	64.14	104.00	Open To Flow (2)
64	80.28	104.27	Shut-In(2)
94	1118.26	105.69	End Shut-In(2)
95	1873.72	105.87	Final Hydro-static

Recovery

Length (ft)	Description	Volume (bbl)
40.00	slightly oil cut mud 5%Oil 95%Mud	5610.95
40.00	very slightly oil cut mud 1%Oil 99%Mud	5610.95

Gas Rates

	Choke (inches)	Pressure (psia)	Gas Rate (Mcf/d)



DRILL STEM TEST REPORT

TOOL DIAGRAM

F.G.Holl Company L.L.C.

Blackwell-Peterson Unit #1-25

9431 East Central Suite 100
Wichita, Kansas 67206-2563

25-22s-15w

Job Ticket: 16580

DST#: 5

ATTN: Rene Hustedad

Test Start: 2011.05.17 @ 09:15:00

Tool Information

Drill Pipe:	Length: 3742.00 ft	Diameter: 380.00 inches	Volume: 524904.2 bbl	Tool Weight:	2000.00 lb
Heavy Wt. Pipe:	Length: 0.00 ft	Diameter: 286.00 inches	Volume: 0.00 bbl	Weight set on Packer:	20000.00 lb
Drill Collar:	Length: 0.00 ft	Diameter: 2.25 inches	Volume: 0.00 bbl	Weight to Pull Loose:	70000.00 lb
			Total Volume: 524904.2 bbl	Tool Chased	0.00 ft
Drill Pipe Above KB:	25.00 ft			String Weight: Initial	58000.00 lb
Depth to Top Packer:	3746.00 ft			Final	58000.00 lb
Depth to Bottom Packer:	ft				
Interval between Packers:	34.00 ft				
Tool Length:	63.00 ft				
Number of Packers:	2	Diameter:	6.75 inches		
Tool Comments:					

Tool Description	Length (ft)	Serial No.	Position	Depth (ft)	Accum. Lengths
Shut-In Tool	5.00			3722.00	
Hydraulic Tool	5.00			3727.00	
Jars	7.00			3734.00	
Safety Joint	2.00		Fluid	3736.00	
Packer	5.00			3741.00	29.00 Bottom Of Top Packer
Packer	5.00			3746.00	
Anchor	29.00			3775.00	
Recorder	1.00	91716	Inside	3776.00	
Recorder	1.00	93335	Outside	3777.00	
Bull Plug	3.00			3780.00	34.00 Bottom Packers & Anchor
Total Tool Length:	63.00				



DRILL STEM TEST REPORT

FLUID SUMMARY

F.G.Holl Company L.L.C.

Blackwell-Peterson Unit #1-25

9431 East Central Suite 100
Wichita, Kansas 67206-2563

25-22s-15w

Job Ticket: 16580

DST#: 5

ATTN: Rene Husted

Test Start: 2011.05.17 @ 09:15:00

Mud and Cushion Information

Mud Type: Gel Chem
Mud Weight: 9.00 lb/gal
Viscosity: 47.00 sec/qt
Water Loss: 13.96 in³
Resistivity: ohm.m
Salinity: 7200.00 ppm
Filter Cake: 1.00 inches

Cushion Type:
Cushion Length: ft
Cushion Volume: bbl
Gas Cushion Type:
Gas Cushion Pressure: psia

Oil API: deg API
Water Salinity: ppm

Recovery Information

Recovery Table

Length ft	Description	Volume bbl
40.00	slightly oil cut mud 5%Oil 95%Mud	5610.949
40.00	very slightly oil cut mud 1%Oil 99%Mud	5610.949

Total Length: 80.00 ft Total Volume: 11221.898 bbl

Num Fluid Samples: 0

Num Gas Bombs: 0

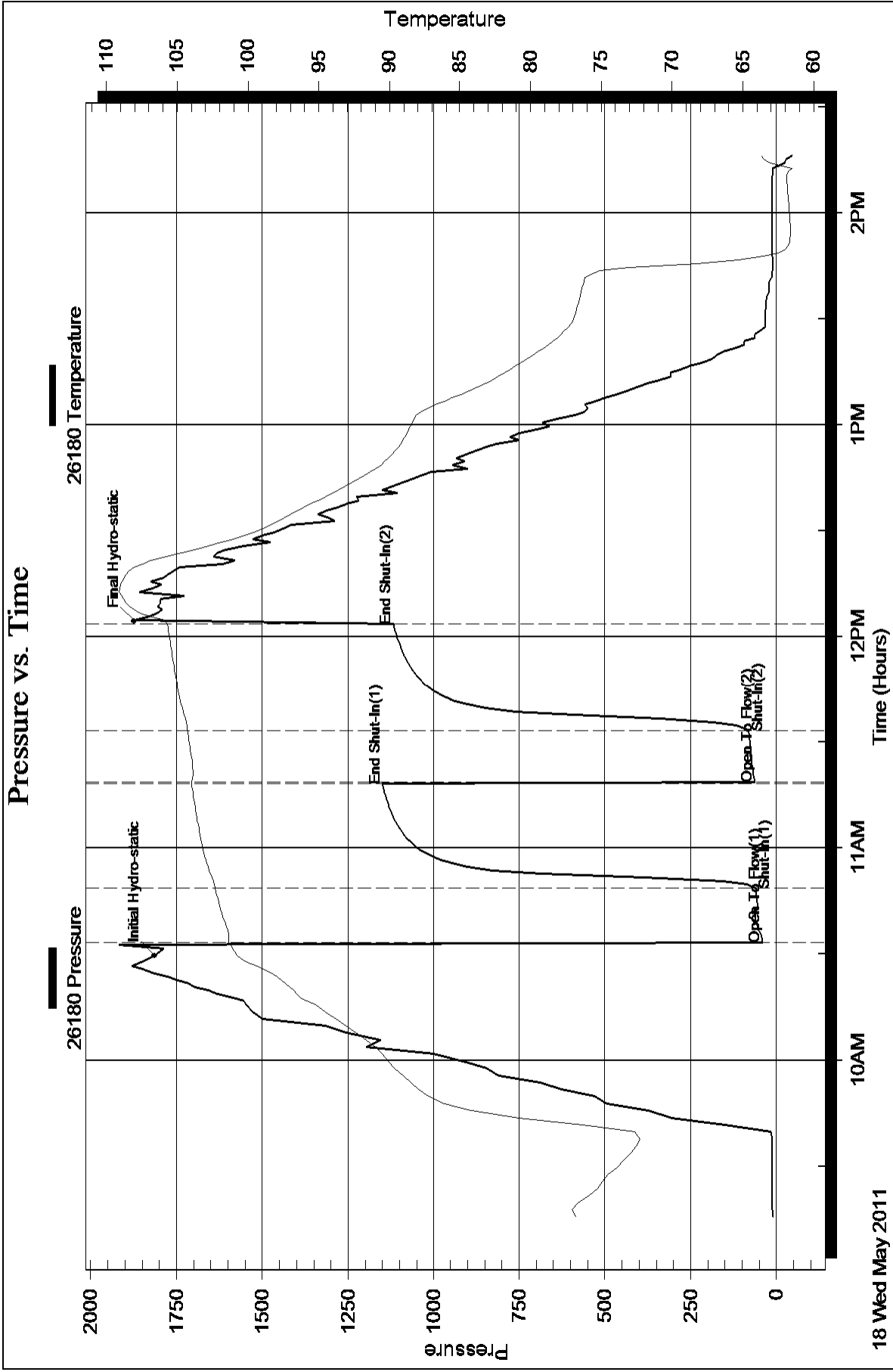
Serial #:

Laboratory Name:

Laboratory Location:

Recovery Comments:

Pressure vs. Time





DRILL STEM TEST REPORT

Prepared For: **F.G.Holl Company L.L.C.**

9431 East Central Suite 100
Wichita, Kansas 67206-2563

ATTN: Rene Husted

25-22s-15w

Blackwell-Peterson Unit #1-25

Start Date: 2011.05.18 @ 11:00:00

End Date: 2011.05.18 @ 15:42:29

Job Ticket #: 16581 DST #: 6

Superior Testers Enterprises LLC
PO Box 138 Great Bend KS 67530
1-800-792-6902

Printed: 2011.05.18 @ 16:51:54



DRILL STEM TEST REPORT

F.G.Holl Company L.L.C.

Blackwell-Peterson Unit #1-25

9431 East Central Suite 100
Wichita, Kansas 67206-2563

25-22s-15w

Job Ticket: 16581

DST#: 6

ATTN: Rene Husted

Test Start: 2011.05.18 @ 11:00:00

GENERAL INFORMATION:

Formation: **Kansas City "L"**

Deviated: No Whipstock: ft (KB)

Time Tool Opened: 12:29:00

Time Test Ended: 15:42:29

Test Type: Conventional Bottom Hole (Initial)

Tester: Gene Budig

Unit No: 3325

Interval: 3780.00 ft (KB) To 3800.00 ft (KB) (TVD)

Reference Elevations: 1996.00 ft (KB)

Total Depth: 3780.00 ft (KB) (TVD)

1988.00 ft (CF)

Hole Diameter: 7.88 inches Hole Condition: Fair

KB to GR/CF: 8.00 ft

Serial #: 26180 Inside

Press @ Run Depth: 39.79 psia @ 3796.00 ft (KB)

Capacity: 5000.00 psia

Start Date: 2011.05.18

End Date: 2011.05.18

Last Calib.: 2011.05.18

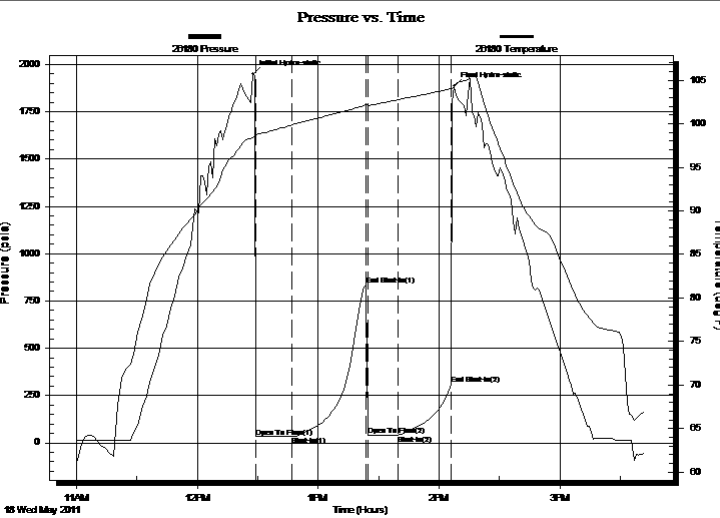
Start Time: 11:00:30

End Time: 15:42:30

Time On Btm: 2011.05.18 @ 12:27:29

Time Off Btm: 2011.05.18 @ 14:07:30

TEST COMMENT: 1st Opening 15 Minutes-Weak blow built to 1/2 inch into the water and decreased to a very weak surface blow
 1st Shut-In 30 Minutes-No blow back
 2nd Opening 15 Minutes-Weak blow built to 3 inches decreased mand died
 2nd Shut-In 30 Minutes-No blow back



PRESSURE SUMMARY

Time (Min.)	Pressure (psia)	Temp (deg F)	Annotation
0	1947.94	98.38	Initial Hydro-static
2	31.42	98.68	Open To Flow (1)
20	33.94	99.85	Shut-In(1)
57	832.05	102.15	End Shut-In(1)
58	37.66	102.14	Open To Flow (2)
73	39.79	102.74	Shut-In(2)
99	309.26	104.01	End Shut-In(2)
101	1884.66	104.30	Final Hydro-static

Recovery

Length (ft)	Description	Volume (bbl)
30.00	Heavy oil cut mud 55%Oil 45%mud	0.42

Gas Rates

Choke (inches)	Pressure (psia)	Gas Rate (Mcf/d)



DRILL STEM TEST REPORT

F.G.Holl Company L.L.C.

Blackwell-Peterson Unit #1-25

9431 East Central Suite 100
Wichita, Kansas 67206-2563

25-22s-15w

Job Ticket: 16581

DST#: 6

ATTN: Rene Husted

Test Start: 2011.05.18 @ 11:00:00

GENERAL INFORMATION:

Formation: **Kansas City "L"**

Deviated: No Whipstock: ft (KB)

Time Tool Opened: 12:29:00

Time Test Ended: 15:42:29

Test Type: Conventional Bottom Hole (Initial)

Tester: Gene Budig

Unit No: 3325

Interval: 3780.00 ft (KB) To 3800.00 ft (KB) (TVD)

Reference Elevations: 1996.00 ft (KB)

Total Depth: 3780.00 ft (KB) (TVD)

1988.00 ft (CF)

Hole Diameter: 7.88 inches Hole Condition: Fair

KB to GR/CF: 8.00 ft

Serial #: 8419 Outside

Press @ Run Depth: 304.68 psia @ 3797.00 ft (KB)

Capacity: 5000.00 psia

Start Date: 2011.05.18

End Date: 2011.05.18

Last Calib.: 2011.05.18

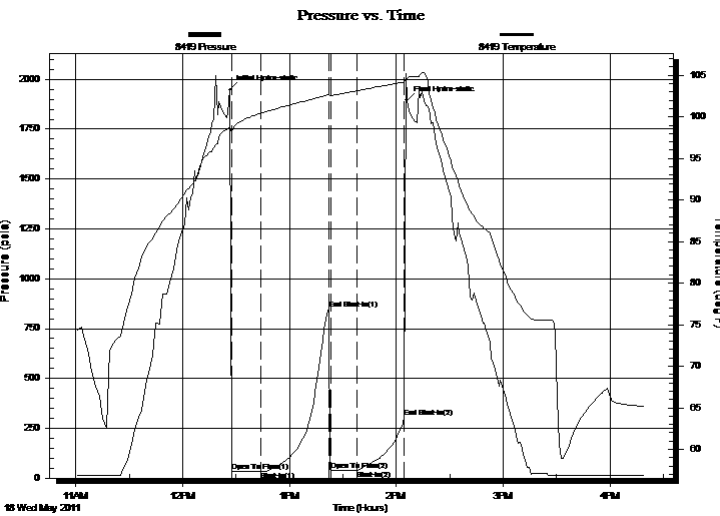
Start Time: 11:01:00

End Time: 16:19:30

Time On Btm: 2011.05.18 @ 12:26:30

Time Off Btm: 2011.05.18 @ 14:06:00

TEST COMMENT: 1st Opening 15 Minutes-Weak blow built to 1/2 inch into the water and decreased to a very weak surface blow
 1st Shut-In 30 Minutes-No blow back
 2nd Opening 15 Minutes-Weak blow built to 3 inches decreased mand died
 2nd Shut-In 30 Minutes-No blow back



PRESSURE SUMMARY

Time (Min.)	Pressure (psia)	Temp (deg F)	Annotation
0	1946.67	98.67	Initial Hydro-static
1	33.82	98.27	Open To Flow (1)
18	34.59	100.45	Shut-In(1)
56	849.39	102.67	End Shut-In(1)
57	38.65	102.56	Open To Flow (2)
72	40.76	103.16	Shut-In(2)
98	304.68	104.22	End Shut-In(2)
100	1895.30	104.67	Final Hydro-static

Recovery

Length (ft)	Description	Volume (bbl)
30.00	Heavy oil cut mud 55%Oil 45%mud	0.42

Gas Rates

Choke (inches)	Pressure (psia)	Gas Rate (Mcf/d)



DRILL STEM TEST REPORT

TOOL DIAGRAM

F.G.Holl Company L.L.C.

Blackwell-Peterson Unit #1-25

9431 East Central Suite 100
Wichita, Kansas 67206-2563

25-22s-15w

Job Ticket: 16581

DST#: 6

ATTN: Rene Husted

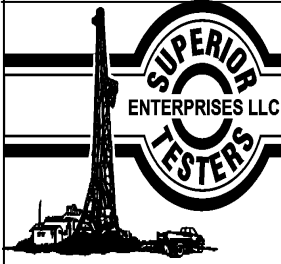
Test Start: 2011.05.18 @ 11:00:00

Tool Information

Drill Pipe:	Length: 3775.00 ft	Diameter: 3.80 inches	Volume: 52.95 bbl	Tool Weight: 2000.00 lb
Heavy Wt. Pipe:	Length: 0.00 ft	Diameter: 2.86 inches	Volume: 0.00 bbl	Weight set on Packer: 20000.00 lb
Drill Collar:	Length: 0.00 ft	Diameter: 2.25 inches	Volume: 0.00 bbl	Weight to Pull Loose: 65000.00 lb
			<u>Total Volume: 52.95 bbl</u>	Tool Chased 0.00 ft
Drill Pipe Above KB:	24.00 ft			String Weight: Initial 48000.00 lb
Depth to Top Packer:	3780.00 ft			Final 48000.00 lb
Depth to Bottom Packer:	ft			
Interval between Packers:	20.00 ft			
Tool Length:	49.00 ft			
Number of Packers:	2	Diameter: 6.75 inches		

Tool Comments:

Tool Description	Length (ft)	Serial No.	Position	Depth (ft)	Accum. Lengths
Shut-In Tool	5.00			3756.00	
Hydraulic Tool	5.00			3761.00	
Jars	7.00			3768.00	
Safety Joint	2.00		Fluid	3770.00	
Packer	5.00			3775.00	29.00 Bottom Of Top Packer
Packer	5.00			3780.00	
Anchor	15.00			3795.00	
Recorder	1.00	26180	Inside	3796.00	
Recorder	1.00	8419	Outside	3797.00	
Bull Plug	3.00			3800.00	20.00 Bottom Packers & Anchor
Total Tool Length:	49.00				



DRILL STEM TEST REPORT

FLUID SUMMARY

F.G.Holl Company L.L.C.

Blackwell-Peterson Unit #1-25

9431 East Central Suite 100
Wichita, Kansas 67206-2563

25-22s-15w

Job Ticket: 16581

DST#: 6

ATTN: Rene Husted

Test Start: 2011.05.18 @ 11:00:00

Mud and Cushion Information

Mud Type: Gel Chem
Mud Weight: 9.00 lb/gal
Viscosity: 49.00 sec/qt
Water Loss: 12.98 in³
Resistivity: ohm.m
Salinity: 7200.00 ppm
Filter Cake: 1.00 inches

Cushion Type:
Cushion Length: ft
Cushion Volume: bbl
Gas Cushion Type:
Gas Cushion Pressure: psia

Oil API: deg API
Water Salinity: ppm

Recovery Information

Recovery Table

Length ft	Description	Volume bbl
30.00	Heavy oil cut mud 55%Oil 45%mud	0.421

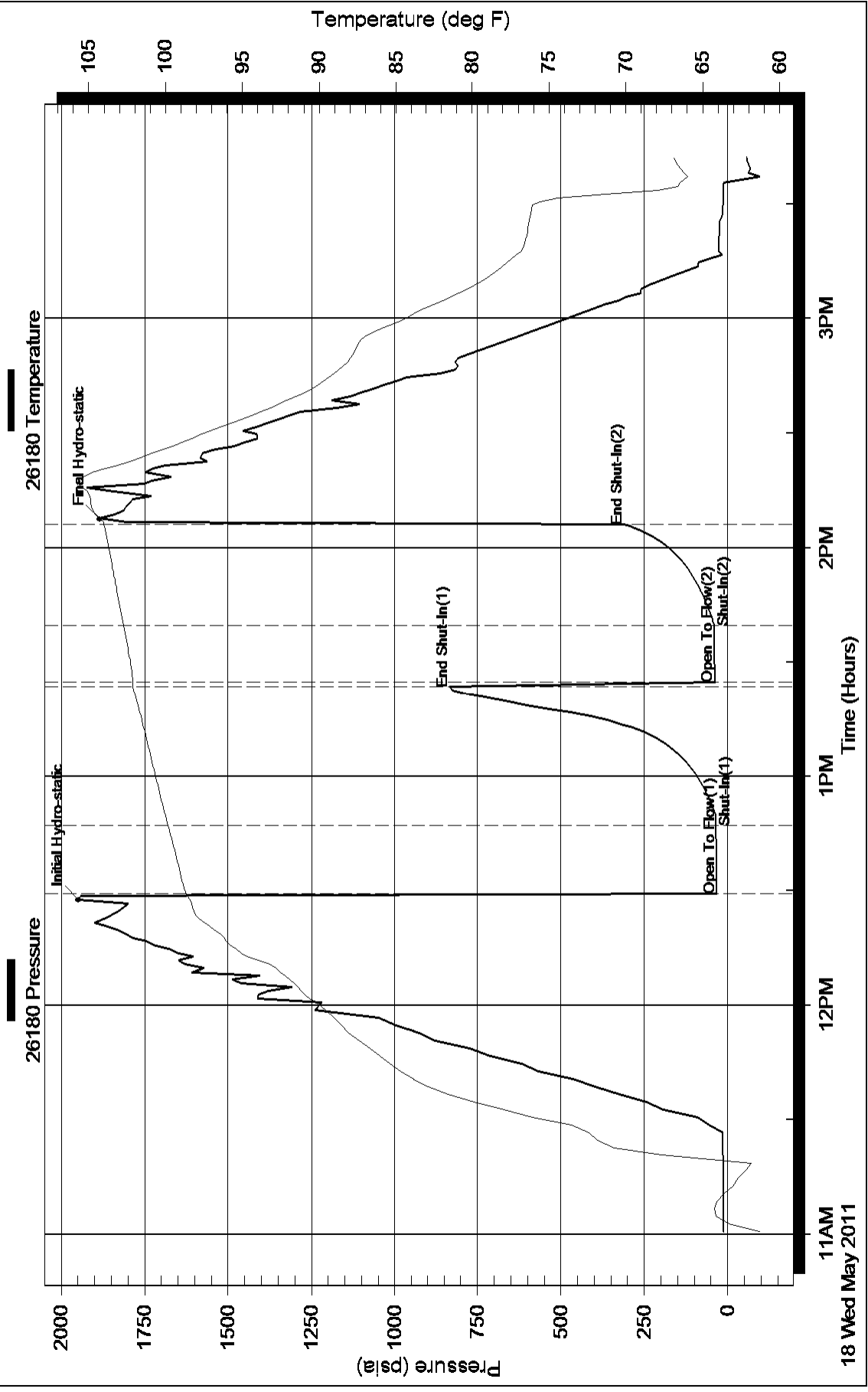
Total Length: 30.00 ft Total Volume: 0.421 bbl

Num Fluid Samples: 0 Num Gas Bombs: 0 Serial #:

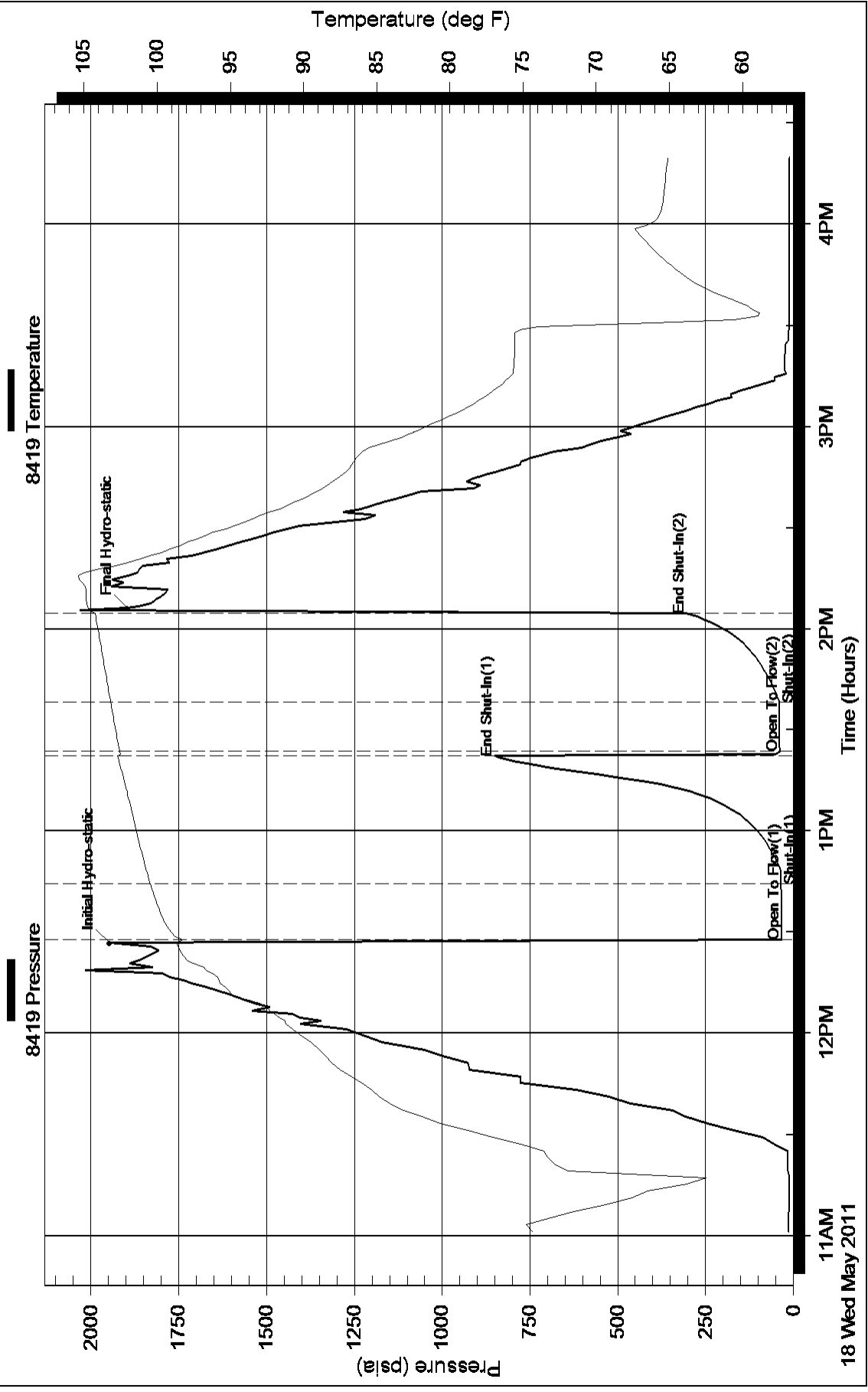
Laboratory Name: Laboratory Location:

Recovery Comments:

Pressure vs. Time



Pressure vs. Time





DRILL STEM TEST REPORT

Prepared For: **F.G.Holl Company L.L.C.**

9431 East Central Suite 100
Wichita, Kansas 67206-2563

ATTN: Rene Husted

25-22s-15w

Blackwell-Peterson Unit #1-25

Start Date: 2011.05.19 @ 04:14:00

End Date: 2011.05.19 @ 00:00:00

Job Ticket #: 16582 DST #: 7

Superior Testers Enterprises LLC
PO Box 138 Great Bend KS 67530
1-800-792-6902

Printed: 2011.05.20 @ 04:37:46



DRILL STEM TEST REPORT

F.G.Holl Company L.L.C.

Blackwell-Peterson Unit #1-25

9431 East Central Suite 100
Wichita, Kansas 67206-2563

25-22s-15w

Job Ticket: 16582

DST#: 7

ATTN: Rene Husted

Test Start: 2011.05.19 @ 04:14:00

GENERAL INFORMATION:

Formation: **Arbuckle**

Deviated: No Whipstock: ft (KB)

Time Tool Opened: 00:00:00

Time Test Ended: 00:00:00

Test Type: Conventional Bottom Hole (Initial)

Tester: Gene Budig

Unit No: 3325

Interval: 3964.00 ft (KB) To 4014.00 ft (KB) (TVD)

Reference Elevations: 1996.00 ft (KB)

Total Depth: 4014.00 ft (KB) (TVD)

1988.00 ft (CF)

Hole Diameter: 7.88 inches Hole Condition: Fair

KB to GR/CF: 8.00 ft

Serial #: 26180 Inside

Press @ Run Depth: 415.79 psia @ 4011.93 ft (KB)

Capacity: 5000.00 psia

Start Date: 2011.05.19 End Date: 2011.05.19

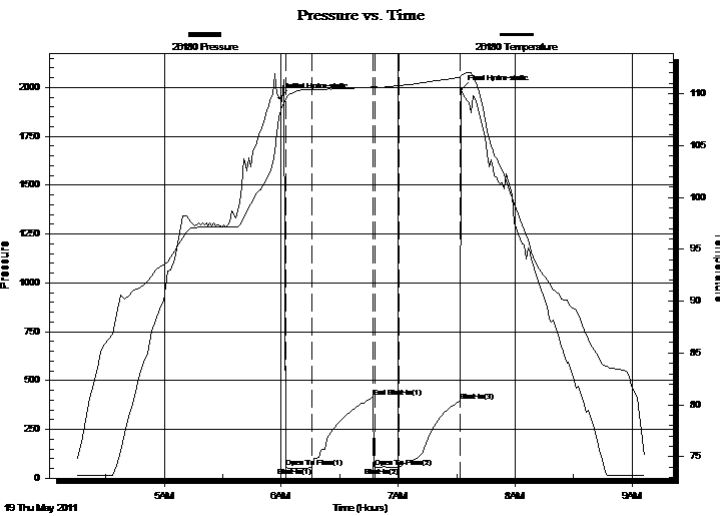
Last Calib.: 2011.05.19

Start Time: 04:15:30 End Time: 09:07:00

Time On Btm: 2011.05.19 @ 05:59:00

Time Off Btm: 2011.05.19 @ 07:32:30

TEST COMMENT: 1st Opening 15 Minutes-Weak blow for 4 minutes and died
1st Shut-In 30 Minutes-No blow back
2nd Oprning 15 Minutes-No blow
2nd Shut-In 30 Minutes-No blow back



PRESSURE SUMMARY

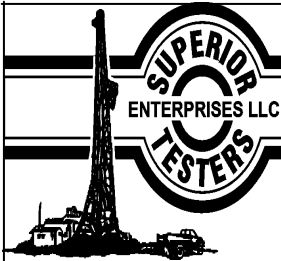
Time (Min.)	Pressure (psia)	Temp (deg F)	Annotation
0	1946.54	108.06	Initial Hydro-static
4	54.33	109.54	Open To Flow (1)
17	53.11	110.40	Shut-In(1)
48	415.79	110.65	End Shut-In(1)
49	54.19	110.64	Open To Flow (2)
62	54.05	110.76	Shut-In(2)
93	393.18	111.55	Shut-In(3)
94	1987.24	111.69	Final Hydro-static

Recovery

Length (ft)	Description	Volume (bbl)
10.00	slightly oil cut mud 2%Oil 98%mud	0.14

Gas Rates

Choke (inches)	Pressure (psia)	Gas Rate (Mcf/d)



DRILL STEM TEST REPORT

F.G.Holl Company L.L.C.

Blackwell-Peterson Unit #1-25

9431 East Central Suite 100
Wichita, Kansas 67206-2563

25-22s-15w

Job Ticket: 16582

DST#: 7

ATTN: Rene Husted

Test Start: 2011.05.19 @ 04:14:00

GENERAL INFORMATION:

Formation: **Arbuckle**

Deviated: No Whipstock: ft (KB)

Time Tool Opened: 00:00:00

Time Test Ended: 00:00:00

Test Type: Conventional Bottom Hole (Initial)

Tester: Gene Budig

Unit No: 3325

Interval: 3964.00 ft (KB) To 4014.00 ft (KB) (TVD)

Reference Elevations: 1996.00 ft (KB)

Total Depth: 4014.00 ft (KB) (TVD)

1988.00 ft (CF)

Hole Diameter: 7.88 inches Hole Condition: Fair

KB to GR/CF: 8.00 ft

Serial #: 8419 Outside

Press @ RunDepth: 393.06 psia @ 4012.93 ft (KB)

Capacity: 5000.00 psia

Start Date: 2011.05.19 End Date: 2011.05.19

Last Calib.: 2011.05.19

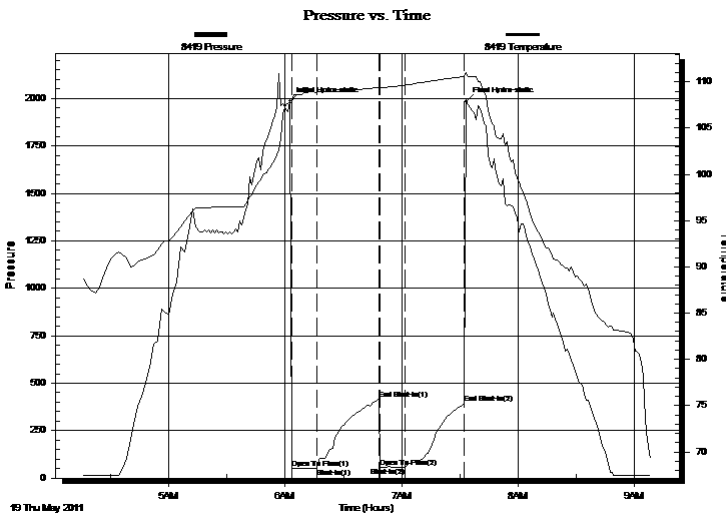
Start Time: 04:16:00 End Time: 09:09:00

Time On Btm: 2011.05.19 @ 06:02:30

Time Off Btm: 2011.05.19 @ 07:33:30

TEST COMMENT: 1st Opening 15 Minutes-Weak blow for 4 minutes and died
1st Shut-In 30 Minutes-No blow back
2nd Oprning 15 Minutes-No blow
2nd Shut-In 30 Minutes-No blow back

PRESSURE SUMMARY



Time (Min.)	Pressure (psia)	Temp (deg F)	Annotation
0	1985.50	107.72	Initial Hydro-static
1	49.37	107.81	Open To Flow (1)
14	54.22	108.89	Shut-In(1)
46	417.47	109.42	End Shut-In(1)
47	54.53	109.36	Open To Flow (2)
60	54.47	109.67	Shut-In(2)
90	393.06	110.60	End Shut-In(2)
91	1983.09	111.03	Final Hydro-static

Recovery

Length (ft)	Description	Volume (bbl)
10.00	slightly oil cut mud 2%Oil 98%mud	0.14

Gas Rates

Choke (inches)	Pressure (psia)	Gas Rate (Mcf/d)



DRILL STEM TEST REPORT

TOOL DIAGRAM

F.G.Holl Company L.L.C.

Blackwell-Peterson Unit #1-25

9431 East Central Suite 100
Wichita, Kansas 67206-2563

25-22s-15w

Job Ticket: 16582

DST#: 7

ATTN: Rene Husted

Test Start: 2011.05.19 @ 04:14:00

Tool Information

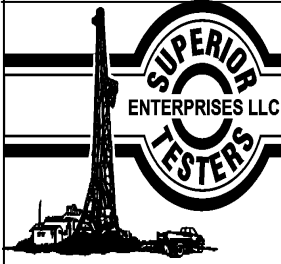
Drill Pipe:	Length: 3964.00 ft	Diameter: 3.80 inches	Volume: 55.60 bbl	Tool Weight: 2000.00 lb
Heavy Wt. Pipe:	Length: 0.00 ft	Diameter: 2.86 inches	Volume: 0.00 bbl	Weight set on Packer: 20000.00 lb
Drill Collar:	Length: 0.00 ft	Diameter: 2.25 inches	Volume: 0.00 bbl	Weight to Pull Loose: 85000.00 lb
			<u>Total Volume: 55.60 bbl</u>	Tool Chased 0.00 ft
Drill Pipe Above KB:	29.00 ft			String Weight: Initial 64000.00 lb
Depth to Top Packer:	3964.00 ft			Final 64000.00 lb
Depth to Bottom Packer:	ft			
Interval between Packers:	49.93 ft			
Tool Length:	78.93 ft			
Number of Packers:	1	Diameter: 6.75 inches		

Tool Comments:

Tool Description	Length (ft)	Serial No.	Position	Depth (ft)	Accum. Lengths
------------------	-------------	------------	----------	------------	----------------

Shut-In Tool	5.00			3940.00	
Hydraulic Tool	5.00			3945.00	
Jars	7.00			3952.00	
Safety Joint	2.00		Fluid	3954.00	
Packer	5.00			3959.00	29.00 Bottom Of Top Packer
Packer	5.00			3964.00	
Anchor	5.00			3969.00	
Change Over Sub	0.75		Inside	3969.75	
Drill Pipe	31.43			4001.18	
Change Over Sub	0.75			4001.93	
Anchor	9.00			4010.93	
Recorder	1.00	91716	Inside	4011.93	
Recorder	1.00	8419	Outside	4012.93	
Bull Plug	1.00			4013.93	49.93 Bottom Packers & Anchor

Total Tool Length: 78.93



DRILL STEM TEST REPORT

FLUID SUMMARY

F.G.Holl Company L.L.C.

Blackwell-Peterson Unit #1-25

9431 East Central Suite 100
Wichita, Kansas 67206-2563

25-22s-15w

Job Ticket: 16582

DST#: 7

ATTN: Rene Husted

Test Start: 2011.05.19 @ 04:14:00

Mud and Cushion Information

Mud Type: Gel Chem
Mud Weight: 9.00 lb/gal
Viscosity: 56.00 sec/qt
Water Loss: 10.18 in³
Resistivity: ohm.m
Salinity: 9500.00 ppm
Filter Cake: 1.00 inches

Cushion Type:
Cushion Length: ft
Cushion Volume: bbl
Gas Cushion Type:
Gas Cushion Pressure: psia

Oil API: deg API
Water Salinity: ppm

Recovery Information

Recovery Table

Length ft	Description	Volume bbl
10.00	slightly oil cut mud 2%Oil 98%mud	0.140

Total Length: 10.00 ft Total Volume: 0.140 bbl

Num Fluid Samples: 0

Num Gas Bombs: 0

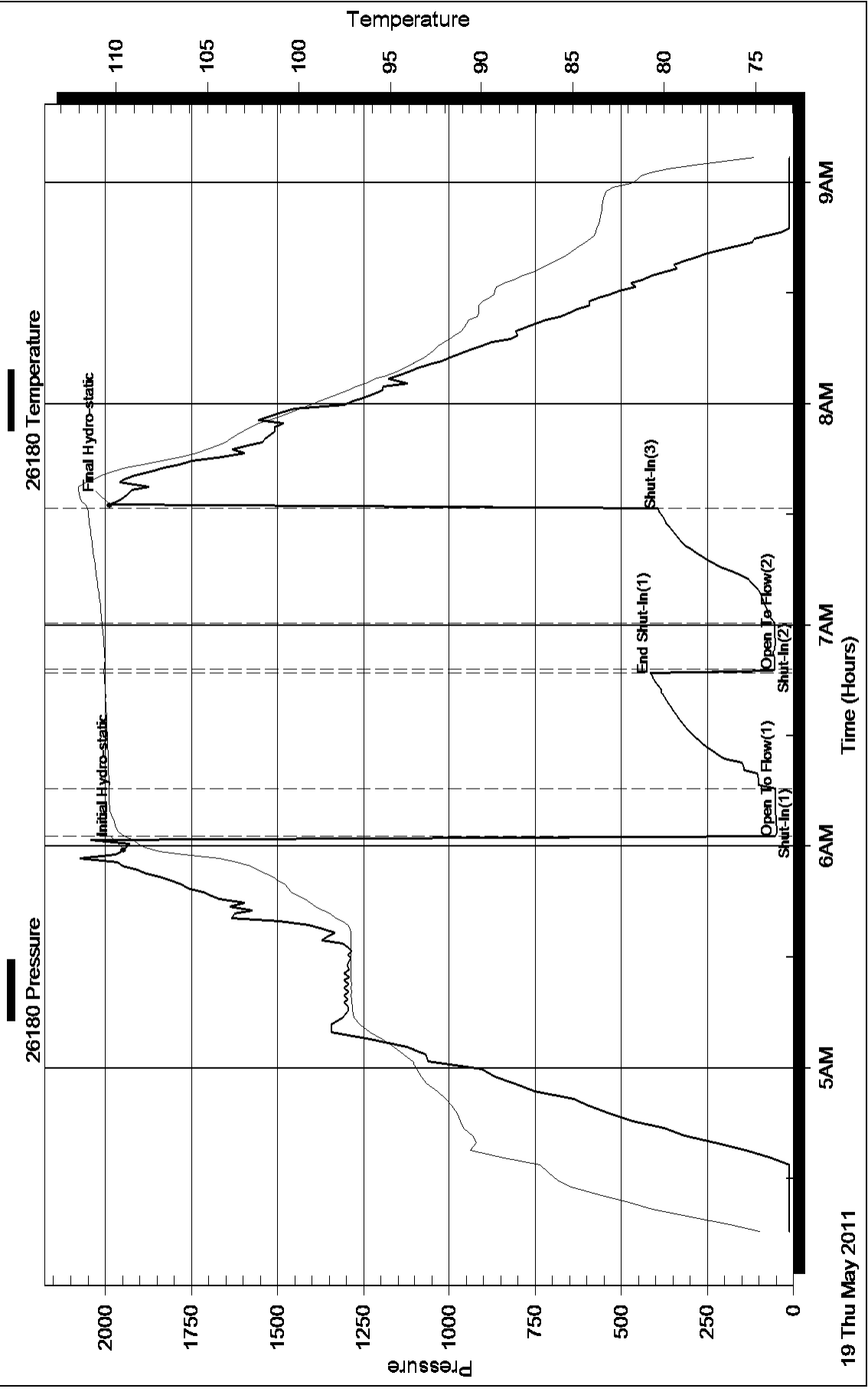
Serial #:

Laboratory Name:

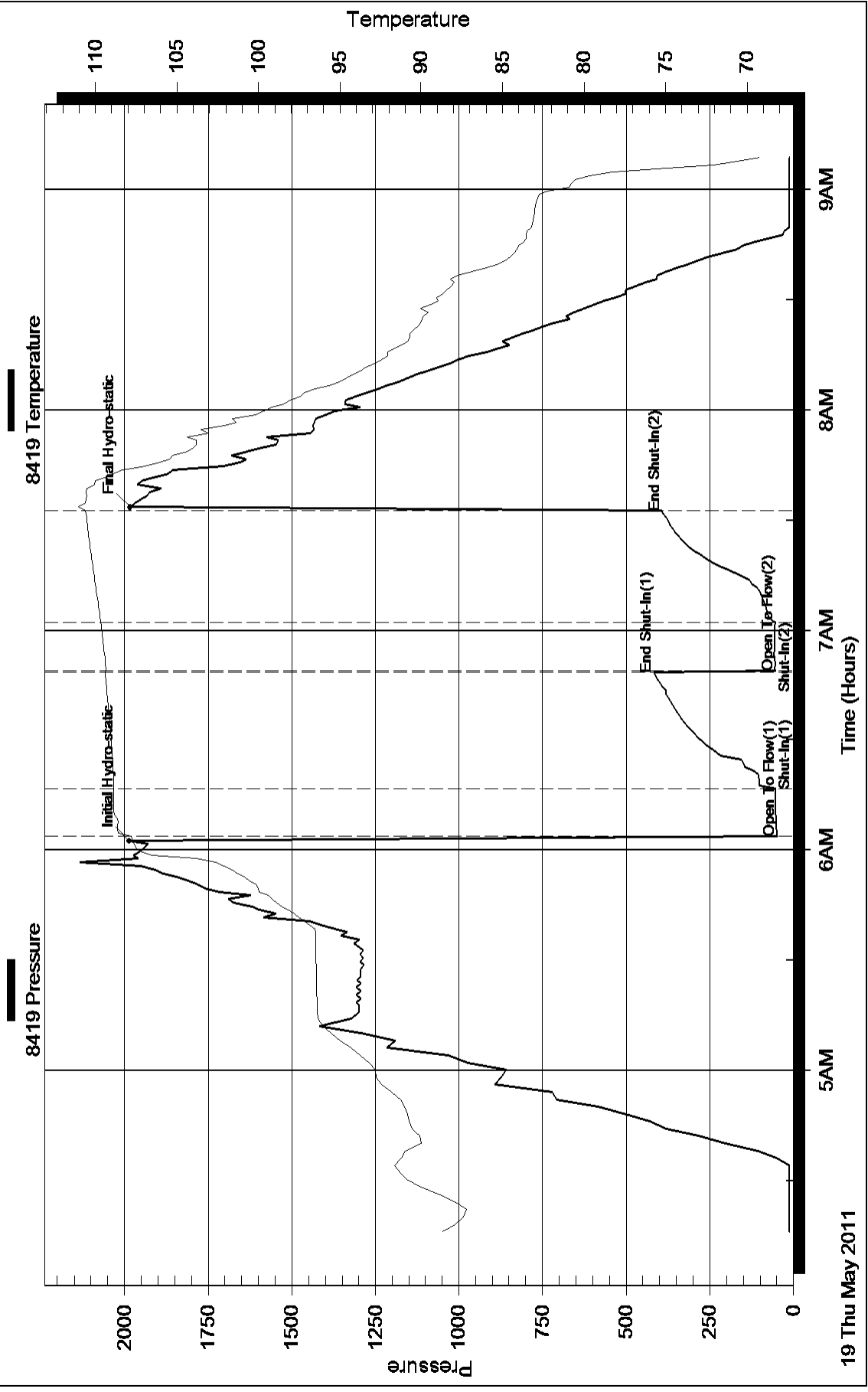
Laboratory Location:

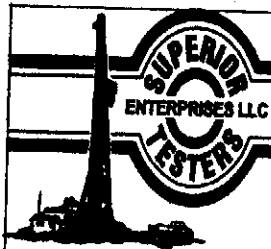
Recovery Comments:

Pressure vs. Time



Pressure vs. Time





DRILL STEM TEST REPORT

F.G.Holl Company L.L.C.

9431 East Central Suite 100
Wichita, Kansas 67206-2563

ATTN: Rene Husted

Blackwell-Peterson Unit #1-25

25-22s-15w

Job Ticket: 16576

DST#: 1

Test Start: 2011.05.14 @ 01:30:00

GENERAL INFORMATION:

Formation: Tarkio

Deviated: No Whipstock: ft (KB)

Time Tool Opened: 00:00:00

Time Test Ended: 00:00:00

Test Type: Conventional Bottom Hole (Initial)

Tester: Gene Budig

Unit No: 3325-50

Interval: 2844.00 ft (KB) To 2907.00 ft (KB) (TVD)

Total Depth: 2844.00 ft (KB) (TVD)

Hole Diameter: 7.88 inches Hole Condition: Fair

Reference Elevations: 1996.00 ft (KB)

1988.00 ft (CF)

KB to GR/CF: 8.00 ft

Serial #: 26180

Inside

Press@RunDepth: 1025.41 psia @ 2903.01 ft (KB)

Start Date: 2011.05.14

End Date:

2011.05.14

Capacity: 5000.00 psia

Start Time: 01:30:30

End Time:

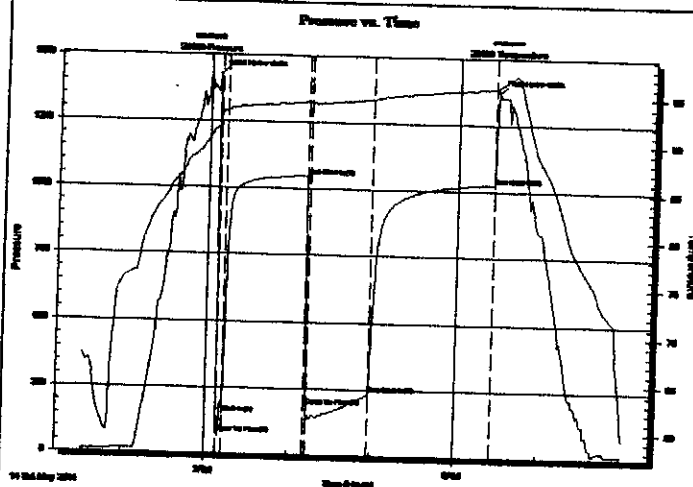
08:01:30

Last Calib.: 2011.05.14

Time On Btm: 2011.05.14 @ 03:06:30

Time Off Btm: 2011.05.14 @ 06:28:30

TEST COMMENT: 1st Opening 5 Minutes-Good blow built to the bottom of a 5 gallon bucket in 30 seconds
1st Shut-in 60 Minutes-No blow back
2nd Opening 45 Minutes-Good blow gas to surface in 12 minutes
2nd Shut-in 90 Minutes-fair blow back



PRESSURE SUMMARY

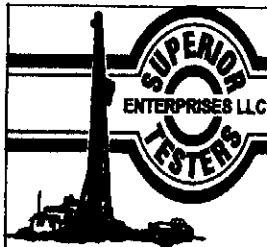
Time (Min.)	Pressure (psia)	Temp (deg F)	Annotation
0	1428.09	91.62	Initial Hydro-static
2	78.52	92.81	Open To Flow (1)
6	150.53	93.35	Shut-in(1)
65	1046.12	94.25	End Shut-in(1)
67	186.38	94.20	Open To Flow (2)
112	236.46	94.62	End Shut-in(2)
200	1025.41	95.94	End Shut-in(3)
202	1372.31	96.10	Final Hydro-static

Recovery

Length (ft)	Description	Volume (bbl)
150.00	thick heavy mud	2.10
60.00	Muddy water 30%Mud 70%Water	0.84
150.00	Water 2%Mud 98%Water	2.10
0.00	Chlorides 146000	0.00
0.00	Resistivity .25 @ 66 degrees	0.00

Gas Rates

	Choke (inches)	Pressure (psia)	Gas Rate (Mcf/d)
First Gas Rate	0.13	35.80	13.40
Last Gas Rate	0.13	23.25	8.70
Max. Gas Rate	0.13	35.80	13.40



DRILL STEM TEST REPORT

F.G.Holl Company L.L.C.

Blackwell-Peterson Unit #1-25

9431 East Central Suite 100
Wichita, Kansas 67206-2563

25-22s-15w

Job Ticket: 16577

DST#: 2

ATTN: Rene Husted

Test Start: 2011.05.14 @ 07:35:00

GENERAL INFORMATION:

Formation: **Tarkio**

Deviated: No Whipstock: ft (KB)

Time Tool Opened: 00:00:00

Time Test Ended: 00:00:00

Test Type: Conventional Bottom Hole (Initial)

Tester: Gene Budig

Unit No: 3325-50

Interval: **2958.00 ft (KB) To 2994.00 ft (KB) (TVD)**

Total Depth: 2994.00 ft (KB) (TVD)

Hole Diameter: 7.88 inches Hole Condition: Fair

Reference Elevations: 1996.00 ft (KB)

1988.00 ft (CF)

KB to GR/CF: 8.00 ft

Serial #: 27799 Outside

Press@RunDepth: 1022.65 psia @ 2991.00 ft (KB)

Start Date: 2011.05.14

End Date: 2011.05.14

Capacity: 5000.00 psia

Last Calib.: 2011.05.15

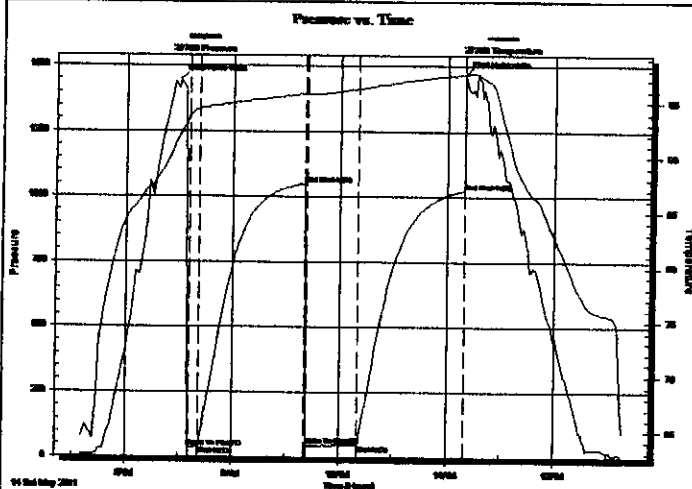
Start Time: 07:35:30

End Time: 12:39:00

Time On Btm: 2011.05.14 @ 08:30:30

Time Off Btm: 2011.05.14 @ 11:10:00

TEST COMMENT: 1st Opening 05 Minutes-Fair blow built to 6 inches into the water
1st Shut-in 60 Minutes-No blow back
2nd Opening 30 Minutes-Strong blow built to the bottom of a 5 gallon bucket in 2 seconds and decreased
2nd Shut-in 60 Minutes-No blow back



PRESSURE SUMMARY

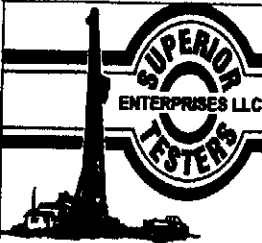
Time (Min.)	Pressure (psia)	Temp (deg F)	Annotation
0	1447.69	92.17	Initial Hydro-static
6	35.48	93.80	Open To Flow (1)
11	39.02	94.42	Shut-in(1)
70	1048.35	95.83	End Shut-in(1)
71	46.55	95.82	Open To Flow (2)
100	47.46	96.23	Shut-in(2)
159	1022.65	97.58	End Shut-in(2)
160	1467.52	97.59	Final Hydro-static

Recovery

Length (ft)	Description	Volume (bbl)
35.00	drilling mud	0.49
0.00	there was no show or odor of gas	0.00

Gas Rates

Choke (inches)	Pressure (psia)	Gas Rate (Mcf/d)



DRILL STEM TEST REPORT

F.G.Holl Company L.L.C.

Blackwell-Peterson Unit #1-25

9431 East Central Suite 100
Wichita, Kansas 67206-2563

25-22s-15w

Job Ticket: 16578

DST#: 3

ATTN: Rene Husted

Test Start: 2011.05.16 @ 02:45:00

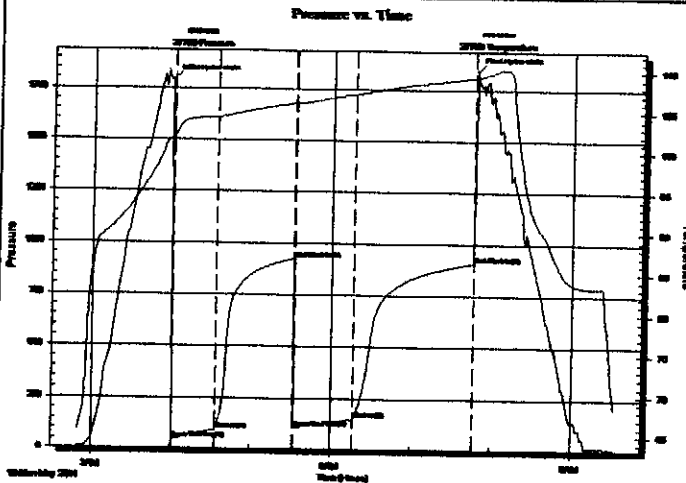
GENERAL INFORMATION:

Formation: **Kansas City "H"**
 Deviated: No Whipstock: ft (KB)
 Time Tool Opened: 00:00:00
 Time Test Ended: 00:00:00
 Interval: **3683.00 ft (KB) To 3702.00 ft (KB) (TVD)**
 Total Depth: **3702.00 ft (KB) (TVD)**
 Hole Diameter: **7.88 inches** Hole Condition: Fair

Test Type: **Conventional Bottom Hole (Initial)**
 Tester: **Gene Budig**
 Unit No: **3325-50**
 Reference Elevations: **1996.00 ft (KB)**
1988.00 ft (CF)
 KB to GR/CF: **8.00 ft**

Serial #: 27799 Outside
 Press@RunDepth: **905.08 psia @ 3699.00 ft (KB)** Capacity: **5000.00 psia**
 Start Date: **2011.05.16** End Date: **2011.05.16** Last Calib.: **2011.05.16**
 Start Time: **02:49:30** End Time: **09:32:30** Time On Btm: **2011.05.16 @ 03:59:30**
 Time Off Btm: **2011.05.16 @ 07:47:30**

TEST COMMENT: 1st Opening 30 Minutes-Weak Steady 1 inch blow
 1st Shut-in 60 Minutes-No blow back
 2nd Opening 45 Minutes-Weak steady 1 inch blow
 2nd Shut-in 90 Minutes-No blow back



PRESSURE SUMMARY

Time (Min.)	Pressure (psia)	Temp (deg F)	Annotation
0	1793.69	101.72	Initial Hydro-static
1	44.56	101.85	Open To Flow (1)
34	92.21	104.30	Shut-in(1)
92	922.18	106.07	End Shut-in(1)
93	102.61	106.07	Open To Flow (2)
137	147.86	107.13	Shut-in(2)
227	905.08	109.26	End Shut-in(2)
228	1841.93	109.26	Final Hydro-static

Recovery

Length (ft)	Description	Volume (bbl)
30.00	Clean Heavy oil	0.42
60.00	oil CUT MUDDY WATER	0.84
0.00	10%Oil 15%Mud 75%Water	0.00
150.00	Slightly oil cut muddy water	2.10
0.00	5%Oil 5%Mud 90%Water	0.00
0.00	Chlorides 95000 Resistivity 1.2@ 69 Deg	0.00

Gas Rates

	Choke (inches)	Pressure (psia)	Gas Rate (Mcf/d)

Customer	FG MOLL	Lease No.	1-25	Date	5-21-2011		
Lease	Blackwell/Peterson	Well #	1-25				
Field Order #	04059	Station	Pratt KS	Casing	4 1/2	Depth	
Type Job	CNW 4 1/2 Longstring		Formation	County	Stafford	State	KS
				Legal Description	25-22-15		

PIPE DATA		PERFORATING DATA		FLUID USED		TREATMENT RESUME		
Casing Size	Tubing Size	Shots/Ft		Acid	RATE	PRESS	ISIP	
4 1/2				Pre Pad	Max		5 Min.	
Depth 4197	Depth	From	To	Pad	Min		10 Min.	
Volume 66 1/2	Volume	From	To	Frac	Avg		15 Min.	
Max Press 1800	Max Press	From	To		HHP Used		Annulus Pressure	
Well Connection P	Annulus Vol.	From	To	Flush	Gas Volume		Total Load	
Plug Depth 4180	Packer Depth	From	To					

Customer Representative	ROB Long	Station Manager	Dave Scott	Treater	ROBERT SULLIVAN
Service Units	27467	19826 19860	37900		
Driver Names	Melson	McGraw	Sullivan		

Time	Casing Pressure	Tubing Pressure	Bbls. Pumped	Rate	Service Log
6:00 Am					Safety meeting
7:15					START Running casing
					Run 105 sts 4 1/2 10.5 csg.
09:00					CASING ON BOTTOM
09:10					Hook leg to circ.
11:10	200		12	3	St. Super flush
			5		St. spacer
			12	5	mix scavenger cont @ 13 ⁸ PPG 50sk
			44	5 1/2	mix 175sk AA-2 cont
					cont mixed shut down w/wh, pump, L&D
					Reloco Plug
				6	St. Disp
	300		53		Lift Psg
	500		60	4	slow rate
11:45	1800		66 1/2		plug down
			7		plug R.H.
			5		plug m.H.
					SOB complete
					Thank you

Customer	F.G. Holl	Lease No.		Date	5-11-11			
Lease	Blackwell/Perkinson	Well #	1-23					
Field Order #	4202	Station	Pratt	Casing	8 5/8	Depth	983	
Type Job	NW-23/8 ← Sulfur		Formation		County	Pawnee	State	KS
						Legal Description	25-20-1	

PIPE DATA		PERFORATING DATA		FLUID USED		TREATMENT RESUME		
Casing Size	Tubing Size	Shots/Ft		Acid	RATE	PRESS	ISIP	
8 5/8				Acid				
Depth	Depth	From	To	Pre Pad	Max		5 Min.	
140				Comms				
Volume	Volume	From	To	Pad	Min		10 Min.	
60								
Max Press	Max Press	From	To	Frac	Avg		15 Min.	
Well Connection	Annulus Vol.	From	To		HHP Used		Annulus Pressure	
P.C.								
Plug Depth	Packer Depth	From	To	Flush	Gas Volume		Total Load	
774				5.12				

Customer Representative	John Amelst	Station Manager	Steve Scott	Treater	Steve Orlando
-------------------------	-------------	-----------------	-------------	---------	---------------

Service Units	27023	33708	20900	19960	19918				
Driver Names	Orlando	Lucas	Waller	Davis	Paye				

Time	Casing Pressure	Tubing Pressure	Bbls. Pumped	Rate	Service Log
7:30 AM					On location - Safety Meeting
					Ran 22.5" 8 5/8 casing
					Centralizer 2-10-15
					Casing on Bolt in Blackwell/Perkinson
10:14	200		5	35	H2O All-out
10:15	200		75	35	Max 200psi Acid @ 11.9"/hr
10:35	200		48	35	with 300psi Comms @ 15"/hr
					SHUT DOWN
					Return PLU
10:45	0		0	4	Start H2O Displacement
10:56	200		42	34	Comms TO Surface
11:00	200		59	33	Plug Down
					Job Completion
					Thank Steve
					17654 Top
					Location: New Job

Customer K. L. Hill	Lease No.	Date 6/24/11
Lease P. S. Hill / P. S. Hill	Well # 1-2	
Field Order # 11511	Station Pratt	Casing 1 1/2"
	Depth	County Pratt
Type Job C. New - Deep Seismic	Formation 1	State KS
		Legal Description J. 23

PIPE DATA		PERFORATING DATA		FLUID USED		TREATMENT RESUME		
Casing Size	Tubing Size	Shots/Ft		Acid	RATE	PRESS	ISIP	
11 1/2"	7 1/8"		2	Pre Pad	Max		5 Min.	
Depth	Depth	From	To	Pad	Min		10 Min.	
Volume	Volume	From	To	Frac	Avg		15 Min.	
Max Press	Max Press	From	To		HHP Used		Annulus Pressure	
Well Connection	Annulus Vol.	From	To	Flush	Gas Volume		Total Load	
Plug Depth	Packer Depth	From	To					

Customer Representative F. Hill	Station Manager D. Hill	Treater S. Hill
Service Units	Driver Names	

Time	Casing Pressure	Tubing Pressure	Bbls. Pumped	Rate	Service Log
2:00 AM					Unit started
3:00	800		5	2	Flow up to 100 gpm
4:00					Pump started
4:20		700	2	2	Flow up to 100 gpm
5:00		700	3	1	Flow up to 100 gpm
5:53		700	16	17	Flow up to 100 gpm
10:00		0	16	17	Flow up to 100 gpm
10:07		0	0	1	Flow up to 100 gpm
10:10		700	3	1	Flow up to 100 gpm
10:17		600	13	1	Flow up to 100 gpm
10:30		600	17		Flow up to 100 gpm
10:40		600	14		Flow up to 100 gpm
11:00		600	14		Flow up to 100 gpm
					Pump 17 bbls to pack
					Close in well head
					Submerge
					7:15 by 5:00