



DRILL STEM TEST REPORT

Prepared For: **Shelby Resources L.L.C**

445 Union BLVD.Suite 208
Lakewood, Colorado 80228

ATTN: Keith Reavis

16/19S/12W Barton

Miller #1-16

Start Date: 2010.11.07 @ 02:03:00

End Date: 2010.11.07 @ 00:00:00

Job Ticket #: 15715 DST #: 2

Superior Testers Enterprises LLC
PO Box 138 Great Bend KS 67530
1-800-792-6902

Printed: 2010.11.07 @ 21:58:31



DRILL STEM TEST REPORT

TOOL DIAGRAM

Shelby Resources L.L.C
 445 Union BLVD.Suite 208
 Lakewood, Colorado 80228
 ATTN: Keith Reavis

Miller #1-16
16/19S/12W Barton
 Job Ticket: 15715 **DST#: 2**
 Test Start: 2010.11.07 @ 02:03:00

Tool Information

Drill Pipe:	Length: 3128.00 ft	Diameter: 3.80 inches	Volume: 43.88 bbl	Tool Weight:	2000.00 lb
Heavy Wt. Pipe:	Length: 0.00 ft	Diameter: 0.00 inches	Volume: 0.00 bbl	Weight set on Packer:	20000.00 lb
Drill Collar:	Length: 186.98 ft	Diameter: 2.25 inches	Volume: 0.92 bbl	Weight to Pull Loose:	8000.00 lb
			<u>Total Volume: 44.80 bbl</u>	Tool Chased	0.00 ft
Drill Pipe Above KB:	29.98 ft			String Weight: Initial	69000.00 lb
Depth to Top Packer:	3314.00 ft			Final	70000.00 lb
Depth to Bottom Packer:	ft				
Interval between Packers:	110.40 ft				
Tool Length:	139.40 ft				
Number of Packers:	2	Diameter:	6.75 inches		

Tool Comments: We shut tool in/got ready to pull the tool and had blow back from the 1 inch hose/tried to measure the blow back but lost it as it bled off on us.

Tool Description	Length (ft)	Serial No.	Position	Depth (ft)	Accum. Lengths
Change Over Sub	1.00			3286.00	
Shut-In Tool	5.00			3291.00	
Hydraulic Tool	5.00			3296.00	
Jars	6.00			3302.00	
Safety Joint	2.00			3304.00	
Packer	5.00			3309.00	29.00 Bottom Of Top Packer
Packer	5.00			3314.00	
Perforations	2.00			3316.00	
Change Over Sub	0.75			3316.75	
Drill Pipe	94.90			3411.65	
Change Over Sub	0.75			3412.40	
Perforations	7.00			3419.40	
Recorder	1.00	4143	Inside	3420.40	
Recorder	1.00	8400	Outside	3421.40	
Bullnose	3.00			3424.40	110.40 Bottom Packers & Anchor

Total Tool Length: 139.40



DRILL STEM TEST REPORT

FLUID SUMMARY

Shelby Resources L.L.C
445 Union BLVD.Suite 208
Lakewood, Colorado 80228
ATTN: Keith Reavis

Miller #1-16
16/19S/12W Barton
Job Ticket: 15715 **DST#: 2**
Test Start: 2010.11.07 @ 02:03:00

Mud and Cushion Information

Mud Type:	Gel Chem	Cushion Type:		Oil API:	deg API
Mud Weight:	9.00 lb/gal	Cushion Length:	ft	Water Salinity:	ppm
Viscosity:	49.00 sec/qt	Cushion Volume:	bbbl		
Water Loss:	7.99 in ³	Gas Cushion Type:			
Resistivity:	ohm.m	Gas Cushion Pressure:	psia		
Salinity:	6000.00 ppm				
Filter Cake:	1.00 inches				

Recovery Information

Recovery Table

Length ft	Description	Volume bbbl
65.00	Slightly oil cut mud 5% Oil 95% Mud	0.320

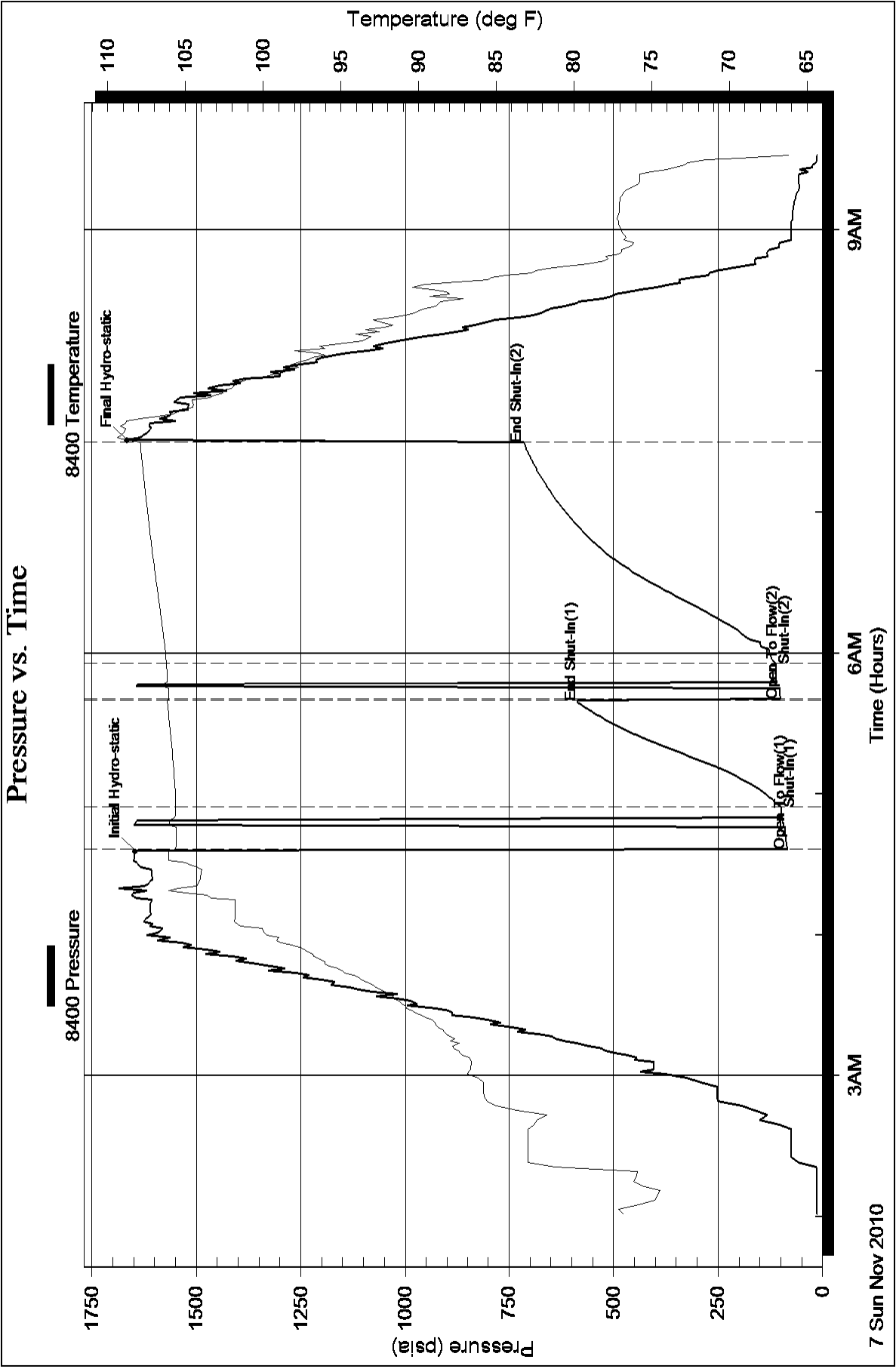
Total Length: 65.00 ft Total Volume: 0.320 bbl

Num Fluid Samples: 0 Num Gas Bombs: 0 Serial #:

Laboratory Name: Laboratory Location:

Recovery Comments:

Pressure vs. Time



Pressure vs. Time

