



GEOLOGIST'S REPORT

OPERATOR **MURFIN DRILLING COMPANY, INC.**

LEASE **MAY 'B' # 1-13**

LOCATION **660 FNL & 800 FEL**

SEC. **13** TWSP **2S** RGE **30W**

COUNTY **DECATUR** STATE **KANSAS**

FIELD **WILDCAT**

CONTRACTOR **Murfin Drilling Company** RIG NO. **8**

COMMENCED **3 March 2011** COMPLETED **11 March 2011**

MUD DISPLACED **2961** MUD TYPE **Chemical**

DRILLING TIME KEPT FROM **3100** TO **4110**

SAMPLES SAVED FROM **3100** TO **4110**

SAMPLES EXAMINED FROM **3100** TO **4110**

GEOLOGICAL SUPERVISION FROM **3120** TO **4110**

GEOLOGIST ON WELL **Paul Gunzelman**

ELEVATIONS

KB **2792 Ft.**

GL **2787 Ft.**

ALL MEASUREMENTS FROM K.B.

CASING RECORD

Conductor **None**

Surface **8 5/8" @ 279'**

Production **None**

ELECTRICAL SURVEYS:

Log-Tech, Inc.

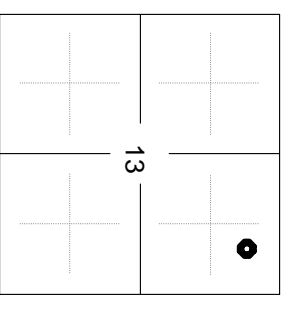
Comp. Neutron Density

Dual Induction

Micro-resistivity

Comp. Sonic

FORMATION NAME	LOG		SAMPLE	
	TOP	DATE	TOP	DATE
Stone Corral	2566	+226	2567	+225
Base/Anhydrite	2597	+195	2599	+193
Neva	3226	-434	3229	-437
Foraker	3344	-552	3347	-555
Topoka	3613	-821	3611	-819
Heebner Shale	3774	-982	3774	-982
Lansing	3820	-1028	3822	-1030
Stark Shale	3985	-1193	3986	-1194
Base/Kansas City	4036	-1244	4038	-2346
Total Depth	4109	-1307	4110	-1308



REMARKS

API 15-039-21130-00-00

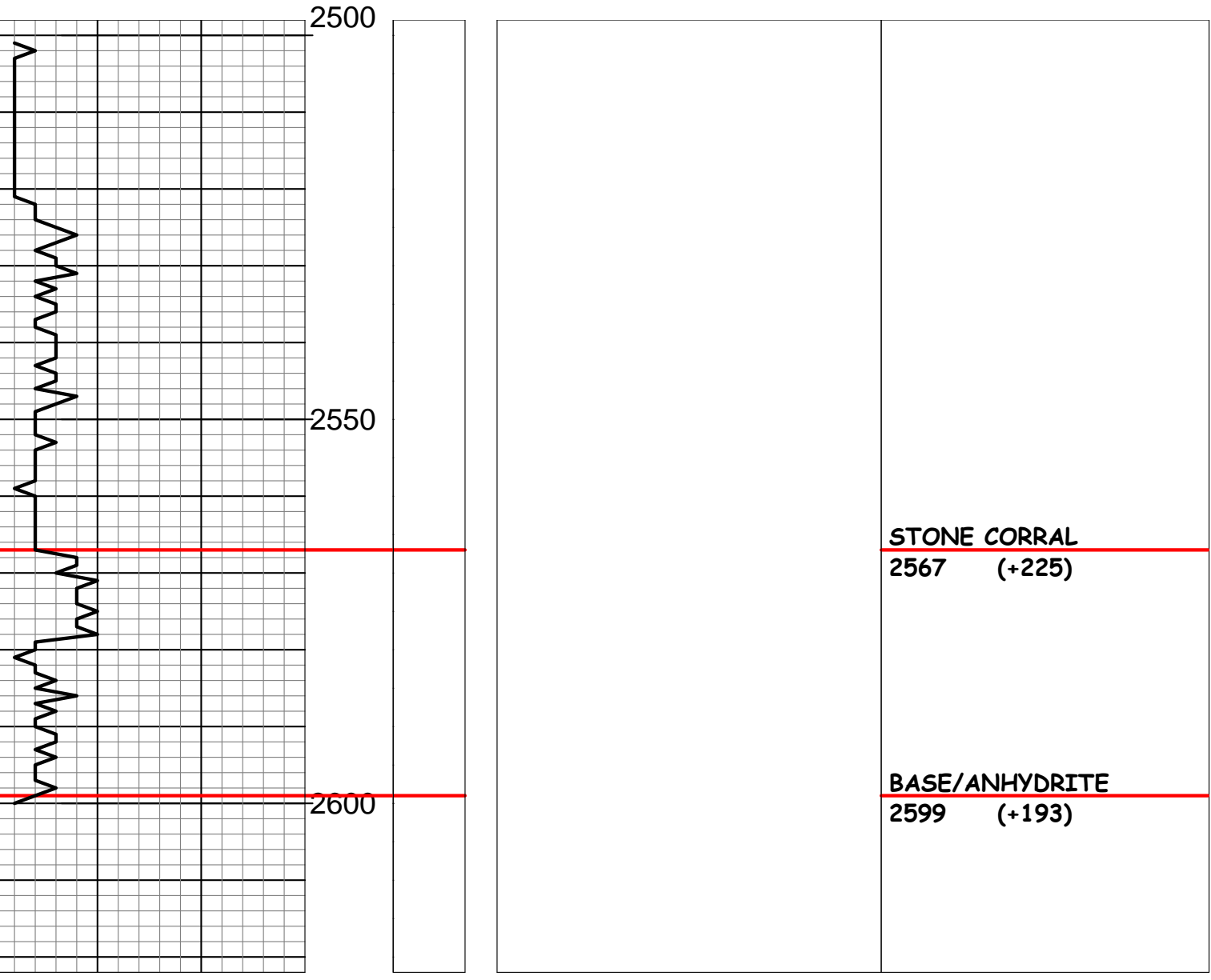
Drilling Fluids: Morgan Mud, Inc. (David Lines, engineer)

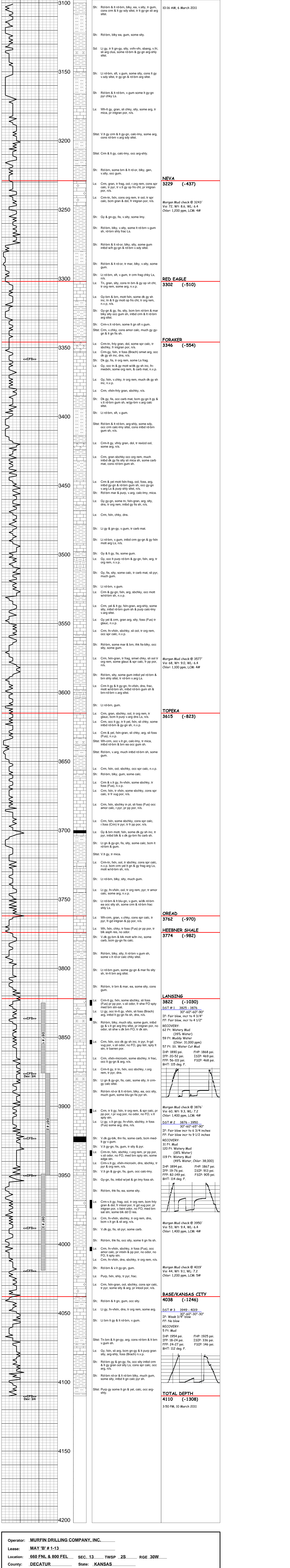
Drill Stem Testing: Trilobite Testing, Inc. (James Winder, tester)

Gas Trailer: No Gas Trailer

Reserve Pit Chlorides:

REMARKS	SAMPLE DESCRIPTIONS	SHOWS	LITHOLOGY	DEPTH	DRILL TIME (MIN/FT)
---------	---------------------	-------	-----------	-------	---------------------





Operator: MURFIN DRILLING COMPANY, INC.
 Lease: MAY 'B' # 1-13
 Location: 660 FNL & 800 FEL SEC. 13 TWSP 2S RGE 30W
 County: DECATUR State: KANSAS