



**TRILOBITE
TESTING, INC**

DRILL STEM TEST REPORT

Shakespear Oil Co. Inc.

Stoll #2-17

202 W Main St.
Salem, IL. 62881

17/13/32/Logan,KS

ATTN: Tim Priest

Job Ticket: 43314

DST#: 6

Test Start: 2011.05.13 @ 09:22:16

GENERAL INFORMATION:

Formation: **K**
 Deviated: No Whipstock: ft (KB)
 Time Tool Opened: 11:38:31
 Time Test Ended: 16:30:46
 Interval: **4254.00 ft (KB) To 4286.00 ft (KB) (TVD)**
 Total Depth: 4286.00 ft (KB) (TVD)
 Hole Diameter: 7.88 inches Hole Condition: Fair
 Test Type: Conventional Bottom Hole
 Tester: Shane McBride
 Unit No: 55
 Reference Elevations: 3038.00 ft (KB)
 3026.00 ft (CF)
 KB to GR/CF: 12.00 ft

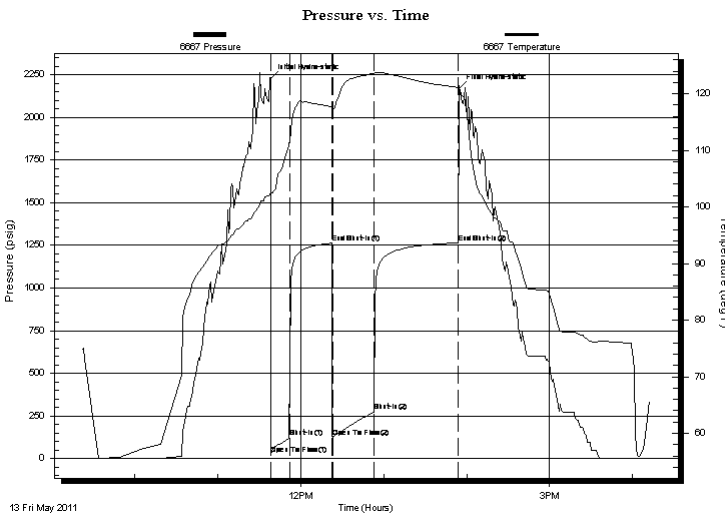
Serial #: 6667

Outside

Press @ Run Depth: 274.71 psig @ 4255.00 ft (KB) Capacity: 8000.00 psig
 Start Date: 2011.05.13 End Date: 2011.05.13 Last Calib.: 2011.05.13
 Start Time: 09:22:16 End Time: 16:12:46 Time On Btm: 2011.05.13 @ 11:38:16
 Time Off Btm: 2011.05.13 @ 13:54:46

TEST COMMENT: B.O.B. in 12 min.
 No return
 B.O.B. in 14 min.
 No return

PRESSURE SUMMARY



| Time (Min.) | Pressure (psig) | Temp (deg F) | Annotation |
|-------------|-----------------|--------------|----------------------|
| 0 | 2225.17 | 102.55 | Initial Hydro-static |
| 1 | 27.36 | 102.08 | Open To Flow (1) |
| 14 | 122.15 | 111.13 | Shut-In(1) |
| 45 | 1262.63 | 117.73 | End Shut-In(1) |
| 45 | 126.75 | 117.37 | Open To Flow (2) |
| 75 | 274.71 | 123.45 | Shut-In(2) |
| 136 | 1264.30 | 121.07 | End Shut-In(2) |
| 137 | 2168.61 | 121.09 | Final Hydro-static |

Recovery

| Length (ft) | Description | Volume (bbl) |
|-------------|-------------------|--------------|
| 300.00 | water 100%w | 3.39 |
| 120.00 | s m c w 10%m 90%w | 1.68 |
| 135.00 | m c w 30%m 70%w | 1.89 |
| | | |
| | | |

Gas Rates

| Choke (inches) | Pressure (psig) | Gas Rate (Mcf/d) |
|----------------|-----------------|------------------|
| | | |



**TRILOBITE
TESTING, INC**

DRILL STEM TEST REPORT

FLUID SUMMARY

Shakespear Oil Co. Inc.

Stoll #2-17

202 W Main St.
Salem, IL. 62881

17/13/32/Logan,KS

Job Ticket: 43314

DST#: 6

ATTN: Tim Priest

Test Start: 2011.05.13 @ 09:22:16

Mud and Cushion Information

Mud Type: Gel Chem

Cushion Type:

Oil API:

0 deg API

Mud Weight: 9.00 lb/gal

Cushion Length:

ft

Water Salinity:

45000 ppm

Viscosity: 55.00 sec/qt

Cushion Volume:

bbbl

Water Loss: 9.58 in³

Gas Cushion Type:

Resistivity: 0.00 ohm.m

Gas Cushion Pressure:

psig

Salinity: 6000.00 ppm

Filter Cake: 1.00 inches

Recovery Information

Recovery Table

| Length ft | Description | Volume bbl |
|--------------|-------------------|---------------|
| 300.00 | water 100%w | 3.388 |
| 120.00 | s m c w 10%m 90%w | 1.683 |
| 135.00 | m c w 30%m 70%w | 1.894 |

Total Length: 555.00 ft Total Volume: 6.965 bbl

Num Fluid Samples: 0

Num Gas Bombs: 0

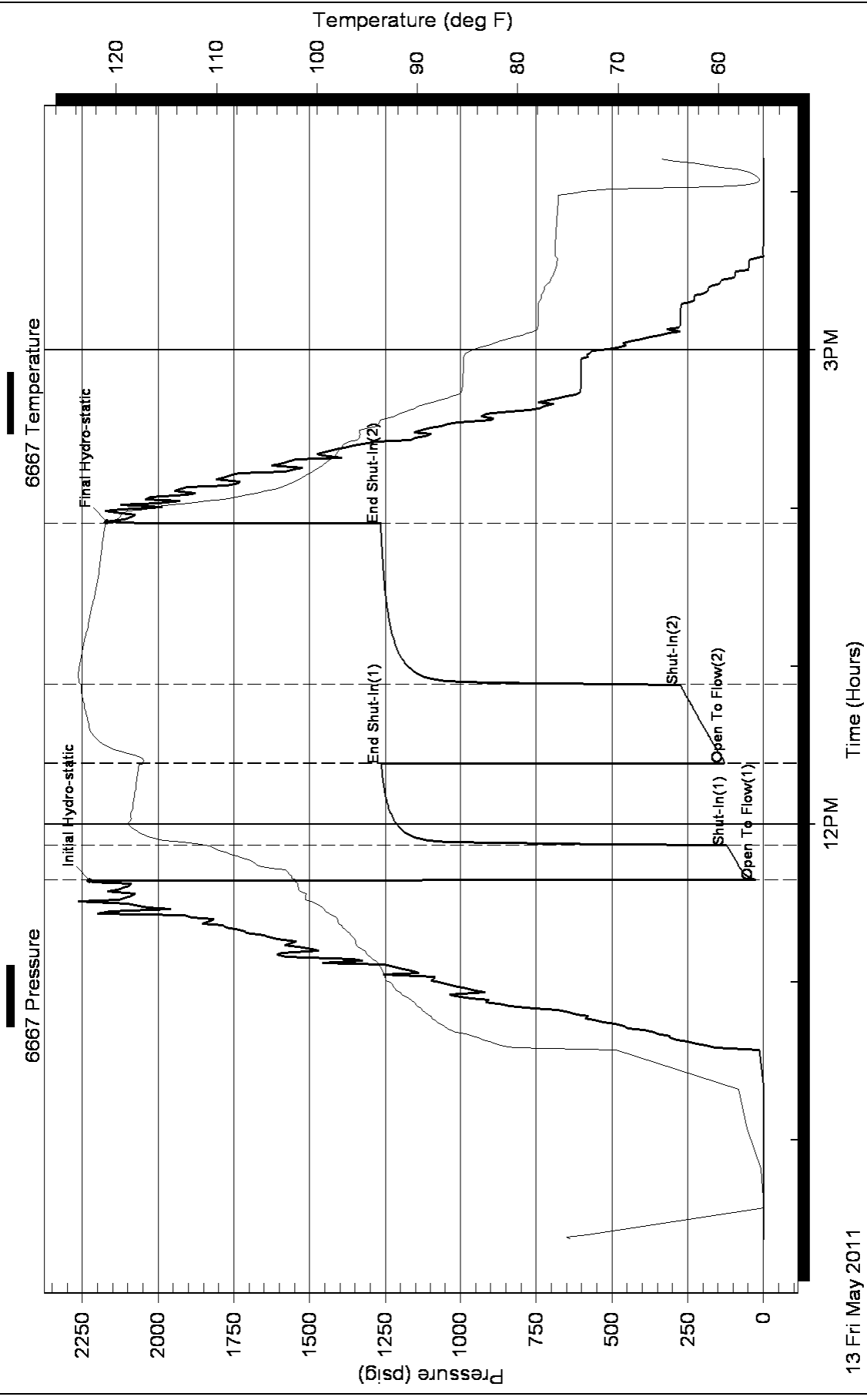
Serial #:

Laboratory Name:

Laboratory Location:

Recovery Comments: rw .159 @ 70^f = 45,000 chlor

Pressure vs. Time



13 Fri May 2011