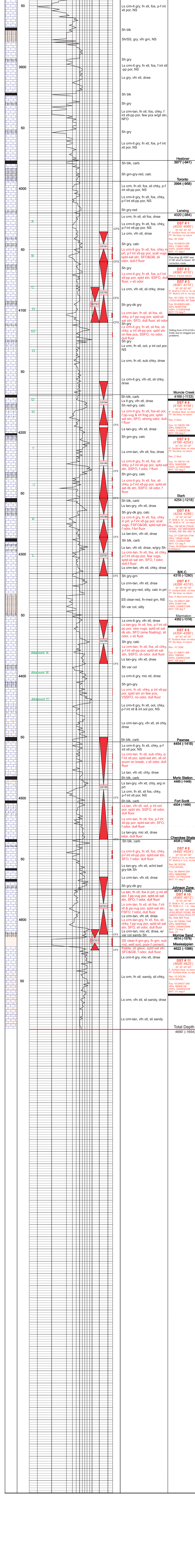


**GEOLOGIST'S REPORT**  
**DRILLING TIME AND SAMPLE LOG**

COMPANY **SHAKESPARE OIL CO.** ELEVATIONS  
 LEASE **Shak #17** KG 3036'  
 FIELD **Wildcat** DF \_\_\_\_\_  
 LOCATION **1870' FSL, 2299' FWWL** GL 3026'  
 SEC **17** TWPSP **13S** RGE **32W**  
 COUNTY **Logan** STATE **Kansas** Measurements Are All From **KB**  
 CONTRACTOR **HD Drilling Rig #2**  
 SPUD **5-4-11** COMP \_\_\_\_\_ CASING  
 RTD **3600'** TYPE MUD **Chemical** CONDUCTION **N/A**  
 MUD UP **3600'** SURFACE **8-5/8" @'**  
 SAMPLES SAVED FROM **3850'** to RTD PRODUCTION \_\_\_\_\_  
 DRILLING TIME KEPT FROM **3850'** to RTD  
 SAMPLES EXAMINED FROM **3850'** to RTD  
 GEOLOGICAL SUPERVISION FROM **3900'** to RTD  
 GEOLOGIST ON WELL **Tim Priest** Micro \_\_\_\_\_  
 By: **Weatherford**

FORMATION TOPS ELECTRIC LOG SAMPLE  
 Anhydrite 2514 (4513)  
 Heebner Shale 3965 (4938)  
 Toronto 3991 (4964)  
 Stark 4010 (4983)  
 BKC  
 Fort Scott  
 Cherokee Shale  
 Mississippian

REMARKS  
 Respectfully Submitted,  
 Tim Priest  
 Petroleum Geologist  
 API #15-109-20998-00-00



**Total Depth** 4690 (-1654)